

# ozito

## PETROL BLOWER

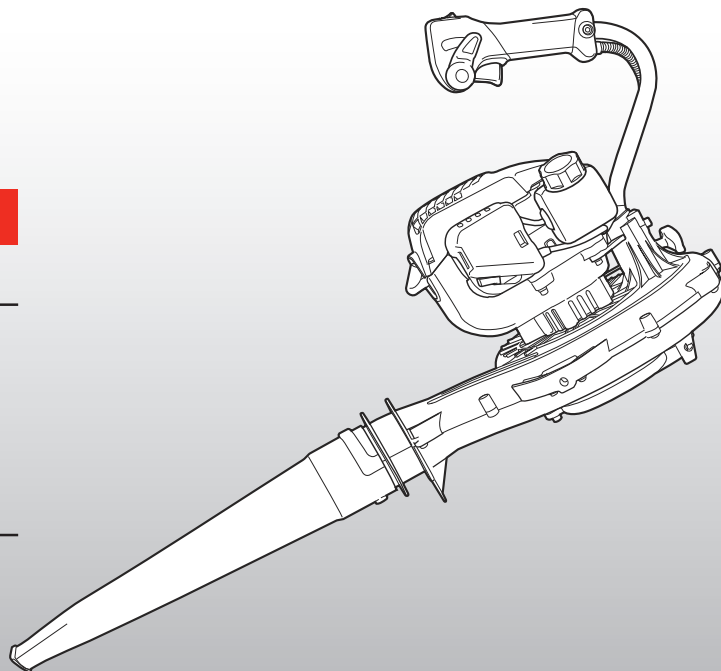
### 30cc 2 Stroke

### INSTRUCTION MANUAL

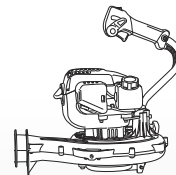
### SPECIFICATIONS

Engine:	30cc, 2-Stroke
Power Output:	0.95 kW (1.3HP)
Fuel Mix:	40:1
Air Speed:	260 km/h
Max. Speed:	7,620rpm
Fuel Tank Capacity:	550 ml
Spark Plug:	TORCH L8RTC
Weight:	4.8 kg

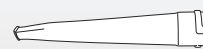
[ozito.com.au](http://ozito.com.au)



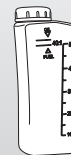
### WHAT'S IN THE BOX



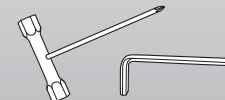
Blower



Direction Nozzle



Fuel Mixing Bottle



Spark Plug Wrench, Hex Key & Assembly Screw

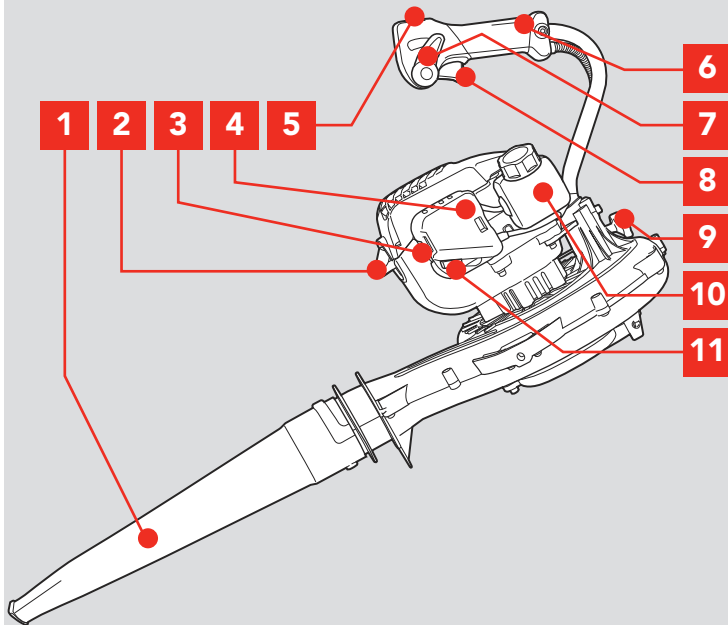
# 1 YEAR WARRANTY

PBL-030

# KNOW YOUR PRODUCT

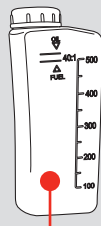
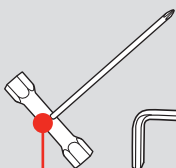
## PETROL BLOWER

- |                    |                    |
|--------------------|--------------------|
| 1 Direction Nozzle | 7 Throttle Lever   |
| 2 Spark Plug       | 8 Throttle Trigger |
| 3 Priming Bulb     | 9 Recoil Starter   |
| 4 Air Filter       | 10 Fuel Tank       |
| 5 On/Off Switch    | 11 Choke Lever     |
| 6 Handle           |                    |



## ACCESSORIES

- |                      |                       |
|----------------------|-----------------------|
| 12 Spark Plug Wrench | 14 Fuel Mixing Bottle |
| 13 Hex Key           | 15 Assembly Screw     |



## ONLINE MANUAL

Scan this QR Code with your mobile device to take you to the online manual.



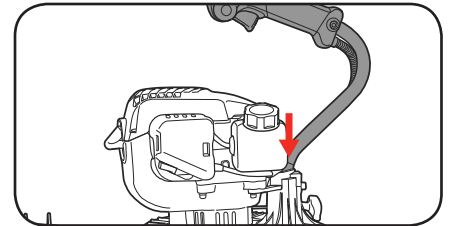
# SETUP & PREPARATION

## 1. ASSEMBLY

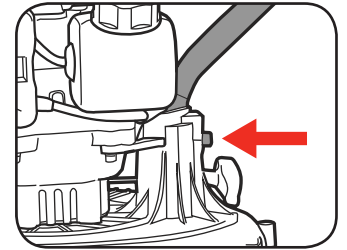
**CAUTION:** ENSURE THE TOOL IS SWITCHED OFF BEFORE PERFORMING ANY OF THE FOLLOWING ASSEMBLY.

### Attaching the Handle

- 1 Slide the handle shaft into the hole at the back of the blower.

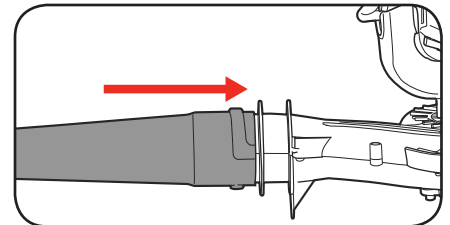


- 2 Secure the handle tightly with the supplied hex screw and hex key.

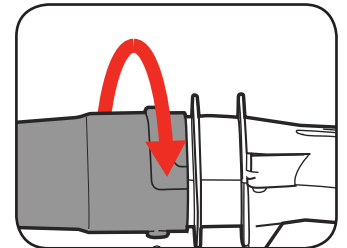


### Attaching the Nozzle

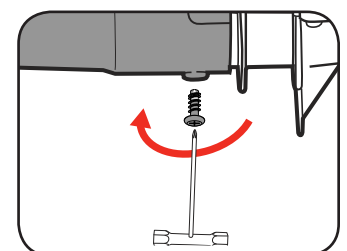
- 1 Push the nozzle into the blower outlet making sure the recess aligns with the top and bottom of the outlet.



- 2 Rotate the nozzle clockwise until it clicks into place.



- 3 Secure the tube with the supplied assembly screw.



# 1 YEAR WARRANTY

# OPERATION

## 2. FUEL & OIL



**CAUTION:** BE SURE TO STOP THE ENGINE BEFORE REFUELLING. DO NOT SMOKE WHILE REFUELLING. MOVE AT LEAST 3M AWAY FROM THE FUELLING POINT BEFORE STARTING THE MOTOR.

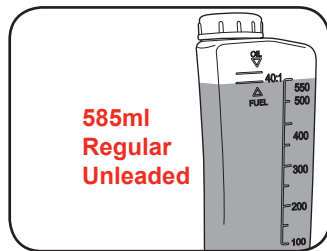
### Motor Fuel: Mix at 40:1 fuel to oil ratio



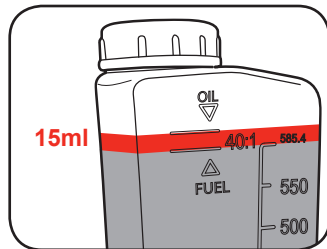
**Note:** Only use oil that is expressly labelled for use with air-cooled 2-stroke engines.

**Note:** Always transport and store fuels in an approved container (supplied bottle is for mixing only).

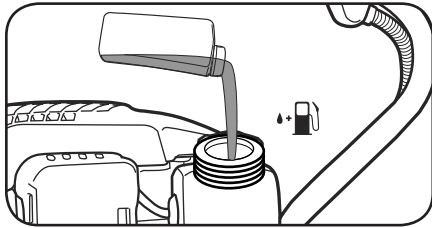
- 1 Fill the mixing bottle with unleaded petrol (91 Octane) up to the fuel line.



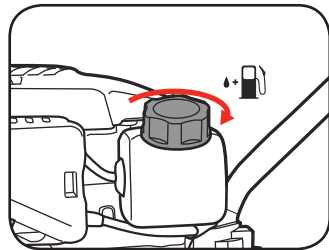
- 2 Add 2-stroke oil up to the oil line. Tighten the lid and shake well for a thorough mix.



- 3 Remove the fuel cap and pour in the mixture. Do not overfill.



- 4 Fasten the fuel cap and clean any spillage.



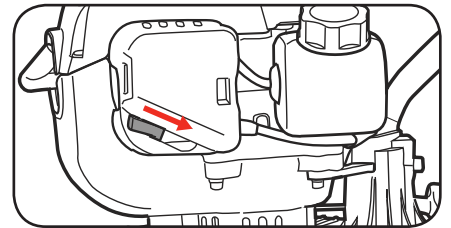
## 3. STARTING & STOPPING

### Pre-startup checks

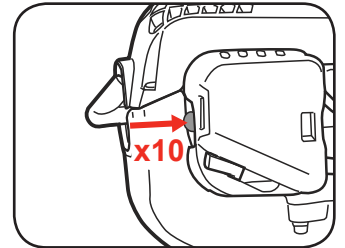
1. Ensure that the nozzle has been fitted and the handle is secured tightly in the correct position.
2. Ensure that there is sufficient fuel/oil mix in the tank before starting the engine.

### Cold Starting

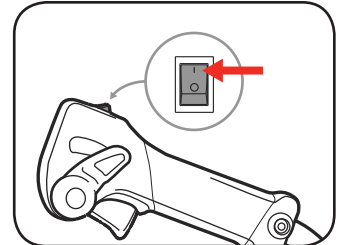
- 1 Set the blower on a hard, level surface and set the choke lever to the close position "I".



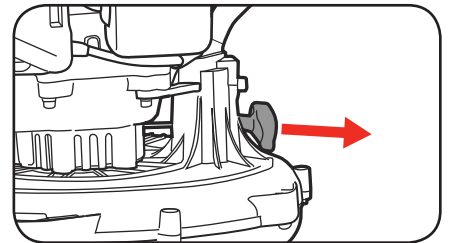
- 2 Press the priming bulb up to 10 times until the bulb is full.



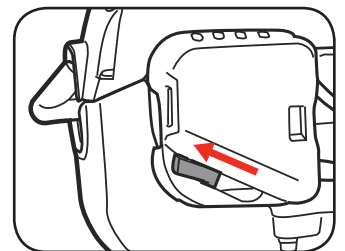
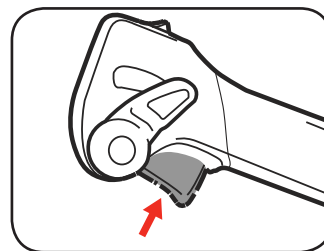
- 3 Set the on/off switch to the on position "I".



- 4 Hold the blower firmly and pull out the recoil starter until you feel resistance. Pull firmly on the recoil starter until the engine fires.



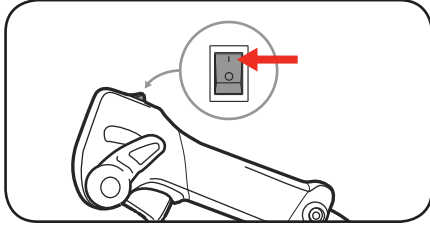
- 5 Once the engine has fired, squeeze trigger to set the choke lever to the open position "II" and restart if necessary.



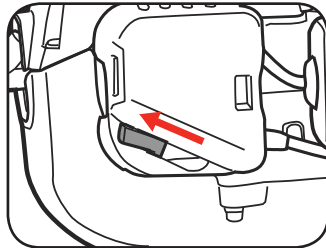
**Note:** If the engine does not start up even after several attempts, read the section "Troubleshooting".

## Warm Starting

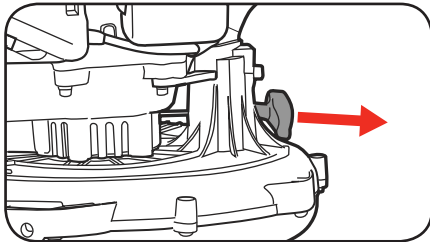
- 1 Set the blower on a hard, level surface and the on/off switch to the On position "I".



- 2 Ensure the choke lever is in the open position "I".



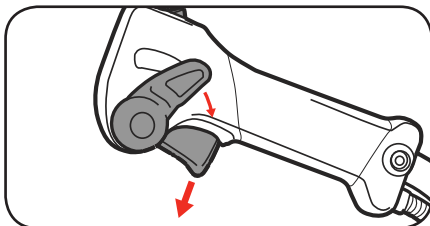
- 4 Hold the blower firmly and pull out the recoil starter until you feel resistance. Pull firmly on the recoil starter until the engine starts.



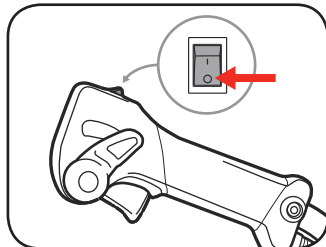
**Note:** If the engine does not start up even after several attempts, follow the steps in "Cold Starting".

## Stopping the Blower

- 1 Allow the blower to slow by releasing the throttle trigger and setting the throttle lever to the slow position.



- 2 Set the on/off switch to the off position "O".

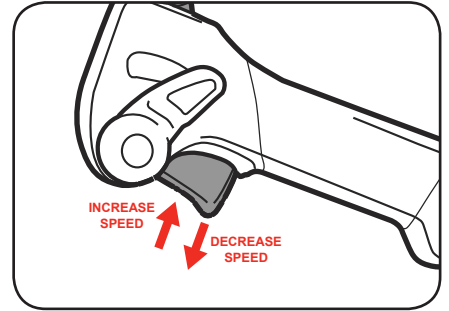


## 4. ADJUSTING THE SPEED

The blower has 2 speed adjustments, the throttle trigger allows fast speeds changes whereas the throttle lever will maintain a speed once set.

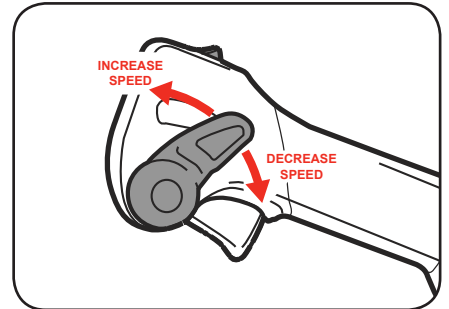
### Throttle Trigger

- 1 To increase the speed of the blower, squeeze the throttle trigger.
- 2 To decrease the speed of the blower, release the throttle trigger.



### Throttle Lever

- 1 To increase the set speed of the blower, rotate the throttle lever forward.
- 2 To decrease the set speed of the blower, rotate the throttle lever backward.



## 5. OPERATING THE BLOWER



**WARNING!** DO NOT USE THE BLOWER WITH ANY TYPE OF ACCESSORY OR ATTACHMENT. SUCH USAGE MIGHT BE HAZARDOUS.



**WARNING!** DO NOT PUT PART OF YOUR BODY SUCH AS HANDS AND FINGERS IN THE VACUUM OPENING OR EXHAUST OPENING.

### Blowing

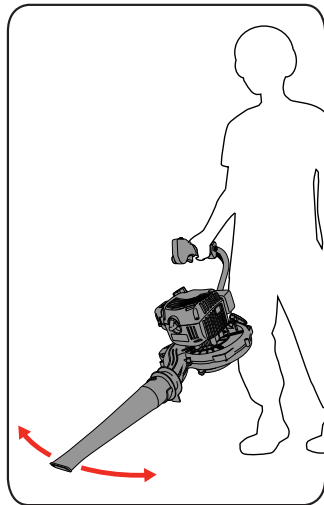
The blower is ideal for blowing leaves, grass clippings and other debris.

Hold the blower firmly, point the jet of air in front of you and move forward slowly. Move the blower from side to side, with the nozzle several inches above the ground.

Be careful where you point the jet of air as it can move heavy material and cause injury or damage to bystanders.

**Note:** Be aware of other people and animals in the area where you are to be operating the blower.

**Note:** Avoid collisions with hard objects which could damage your machine.



**WARNING!** DO NOT SWITCH THE MACHINE ON IN ENCLOSED OR POORLY VENTILATED SPACES OR IN THE PRESENCE OF FLAMMABLE AND/OR EXPLOSIVE LIQUIDS, GASES AND POWDERS.

## 6. GENERAL MAINTENANCE



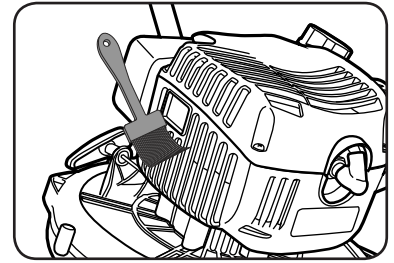
**WARNING!** ENSURE THE BLOWER IS SWITCHED OFF AND ALLOWED TO COOL DOWN BEFORE PERFORMING ANY OF THE FOLLOWING OPERATIONS.



**WARNING!** BEFORE EACH USE, INSPECT THE ENTIRE PRODUCT FOR DAMAGED, MISSING OR LOOSE PARTS, SUCH AS SCREWS, NUTS, BOLTS, CAPS, ETC. TIGHTEN SECURELY ALL FASTENERS AND DO NOT OPERATE THIS PRODUCT UNTIL ALL MISSING OR DAMAGED PARTS ARE REPLACED.

### Cleaning

- Use a soft brush to remove debris from all air intakes.
- Wipe the surface with a dry cloth.
- Never use water for cleaning your blower. Most plastics are susceptible to damage from various types of commercial solvents. Use clean cloths to remove dirt, dust, oil, grease, etc.
- If the blower vibrates abnormally, stop motor immediately. Abnormal vibration usually indicates a mechanical problem continued operation could lead to injury or damage.



**Note:** Ozito Industries will not be responsible for any damage or injuries caused by repair of the tool by an unauthorised person or mishandling or mistreatment of the blower. This tool is designed for DIY use - use in commercial or industrial environments will void the warranty.

### Storage

In order to avoid deposits forming on the interior of the carburettor, follow these instructions:

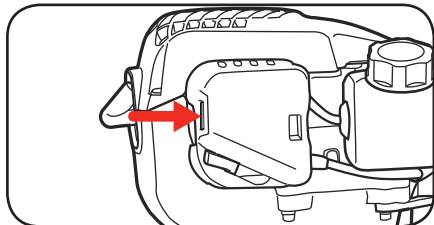
1. Carry out all of the maintenance work and drain the fuel out of the tank.
2. When the fuel has been drained, start the engine and allow it to run at idling speed until it stops. This will clean the remainder of the fuel out of the carburettor.
3. Leave the machine to cool (approx. 5 minutes).
4. Remove the spark plug.
5. Place a teaspoon full of 2-stroke engine oil into the combustion chamber. Pull the starter cable several times carefully to wet the internal components with the oil. Fit the spark plug again.
6. Store the machine in a cold, dry place where it is out of the reach of ignition sources and inflammable substances.

# MAINTENANCE

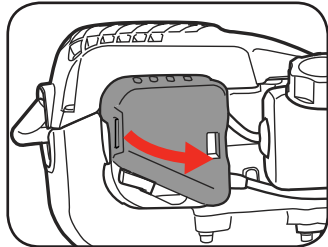
## 7. FILTER MAINTENANCE

Dirty air filters reduce the engine output by restricting air to the carburettor. Regular checks are therefore essential. The air filter should be checked after every 25 hours of use and cleaned if necessary. If the air contains a lot of dust, the air filter should be checked more frequently.

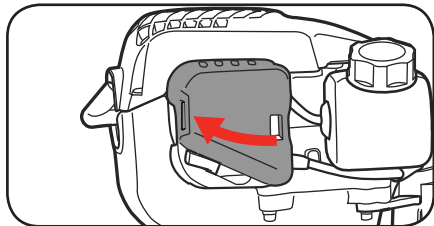
- 1 Push the tab at the front of the air filter to free the cover.



- 2 Remove the cover and filter element and clean by tapping or blowing.



- 3 Reassemble in reverse order. Make sure that the choke lever is not in the way when pushing the cover back on.

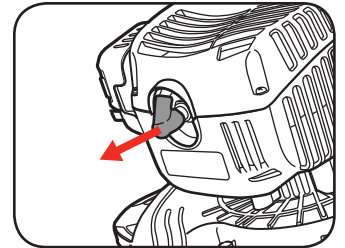


**IMPORTANT:** NEVER CLEAN THE AIR FILTER WITH PETROL OR INFLAMMABLE SOLVENTS.

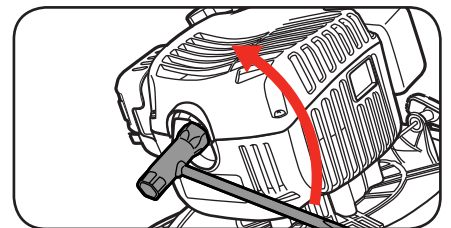
## 8. SPARK PLUG MAINTENANCE

**Spark Plug:** Torch L8RTC, Champion RCJ6Y, NGK BPMR7A or equivalent.

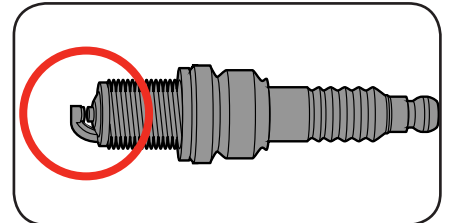
- 1 Pull off the spark plug lead.



- 2 Remove the spark plug using the supplied spark plug wrench.



- 3 Check the spark plug for dirt and grime and if necessary clean it with a copper wire brush or replace. Sparking Gap: 0.6mm.























- 4 Reassemble in reverse order.

**Note:** The spark plug should be checked every 50 hours of operation.

# TROUBLESHOOTING

FAULT	POSSIBLE CAUSES	TROUBLESHOOTING
<b>The machine will not slow down</b>	The throttle lever is set to maintain a high speed.	Rotate the throttle lever to a lower setting.
<b>The machine does not start.</b>	Correct starting procedure not followed.	Follow the instructions for starting.
	Dirty or old fuel mix.	Replace with clean fuel mix.
	Dirty spark plug.	Clean the spark plug and adjust the electrode gap or fit a new spark plug.
	Incorrect carburettor setting.	Contact an authorized customer service outlet.
<b>The machine starts but does not develop its full output.</b>	Incorrect choke lever setting.	Set the choke to the open position.
	Dirty or clogged air filter.	Clean the air filter.
	Incorrect carburettor setting.	Contact an authorized customer service outlet.
<b>The engine does not run smoothly</b>	Incorrect electrode gap on the spark plug.	Clean the spark plug and adjust the electrode gap or fit a new spark plug.
	Incorrect carburettor setting.	Contact an authorized customer service outlet.
<b>Engine smokes excessively</b>	Incorrect fuel mix.	Use 40 parts fuel to 1 part oil mix.
	Incorrect carburettor setting	Contact an authorized customer service outlet.

# DESCRIPTION OF SYMBOLS

<b>cc</b>	Cubic Centimeters (the standard measure of displacement in Europe and Asia)		
<b>No</b>	No load speed		
<b>/min</b>	Revolutions or reciprocation per minute		
<b>dB</b>	Decibel level		Regulator compliance mark
	Read the manual prior to use		Keep bystanders away
	Regulator compliance mark		Do not smoke
	Wear eye protection		Wear ear protection
	Warning		Sound pressure level
	Fuel inlet 40:1 Fuel Oil mix ratio		Extremely hot surface.
	Pull recoil starter to start motor		Choke off
			Choke on
	Do not put hands or feet near nozzle when it is running.		
	Be aware of people around you and do not direct towards them.		
	Do not use in the rain or leave the blower outdoors while raining.		
	Wear safety boots		Thrown objects can cause severe injury.
	Wear safety gloves		

# SPARE PARTS

Spare parts can be ordered from the Special Orders Desk at your local Bunnings Warehouse.

For further information, or any parts not listed here, visit [www.ozito.com.au](http://www.ozito.com.au) or contact Ozito customer service

Australia 1800 069 486

New Zealand 0508 069 486

E-mail: [enquires@ozito.com.au](mailto:enquires@ozito.com.au)

# CARING FOR THE ENVIRONMENT




Tools that are no longer usable should not be disposed of with household waste but in an environmentally friendly way. Please recycle where facilities exist. Check with your local council authority for recycling advice.



Recycling packaging reduces the need for landfill and raw materials. Reuse of recycled material decreases pollution in the environment. Please recycle packaging where facilities exist. Check with your local council authority for recycling advice.

# SAFETY INSTRUCTIONS

 **WARNING!** Read all safety warnings and all instructions. Failure to follow the warnings and instructions may result in electric shock, fire and/or serious injury.

## Save these instructions

### RISK OF EXPLOSION OR FIRE

#### What can happen:

- Spilled petrol and its vapours can become ignited from cigarette sparks, electrical arcing, exhaust gases and hot engine components such as the muffler.
- Heat will expand fuel in the tank which could result in a fire.
- Operating the tool in an explosive environment could result in a fire.
- Muffler exhaust heat can damage painted surfaces, melt any materials sensitive to heat (such as siding plastic, rubber or vinyl) and damage live plants. Keep hot tool away from other objects.
- Improperly stored fuel could lead to accidental ignition. Fuel improperly secured could get into the hands of children or other unqualified persons.

#### How to prevent it:

- Shut off engine and allow it to cool before adding fuel to the tank.
- Use care when filling the tank to avoid spilling fuel. Move tool away from fuelling area before starting engine.
- Keep maximum fuel level 20mm below top of tank to allow for expansion.
- Operate and refuel in well ventilated areas free from obstructions.
- Store fuel in a approved container (AS/NZS 2906-1999) for petrol. Store in a secure location away from the work area. Make sure the container is clearly marked "fuel".

### RISK TO BREATHING

#### What can happen:

- Breathing exhaust fumes can cause serious injury or death.

#### How to prevent it:

- Operate tool in a well ventilated area. Avoid enclosed areas.
- Never operate unit in a location occupied by other people or animals.

### SAVE THESE INSTRUCTIONS

#### 1) Work area

- a) Keep work area clean and well lit. Cluttered and dark areas invite accidents.**
- b) Do not operate petrol tools in explosive atmospheres, such as in the presence of flammable liquids, gases, or dust.** Power tools create sparks which may ignite the dust or fumes.
- c) Keep children and bystanders away while operating a petrol tool.** Distractions can cause you to lose control.

#### 2) Personal safety

- a) Stay alert, watch what you are doing and use common sense when operating a petrol tool.** Do not use a power tool while you are tired or under the influence of drugs, alcohol, or medication. A moment of inattention while operating power tools may result in

serious personal injury.

- b) Use safety equipment. Always wear eye protection.** Safety equipment such as a dust mask, non-skid safety shoes, hard hat, or hearing protection used for appropriate conditions will reduce personal injuries.
  - c) Remove any adjusting key or wrench before turning the tool on.** A wrench or a key that is left attached to a rotating part of the petrol tool may result in personal injury.
  - d) Do not overreach. Keep proper footing and balance at all times.** This enables better control of the petrol tool in unexpected situations.
  - e) Dress properly. Do not wear loose clothing or jewellery.** Keep your hair, clothing and gloves away from moving parts. Loose clothes, jewellery or long hair can be caught in moving parts.
  - f) If devices are provided for the connection of dust extraction and collection facilities ensure that these are connected and properly used.** Use of these devices can reduce dust-related hazards.
- #### 3) Petrol tool use and care
- a) Do not force the petrol tool. Use the correct petrol tool for your application.** The correct petrol tool will do the job better and safer at the rate for which it was designed.
  - b) Do not use the petrol tool if the switch does not turn it on and off.** Any petrol tool that cannot be controlled with the switch is dangerous and must be repaired.
  - c) Turn tool off completely before making any adjustments, changing accessories, or storing petrol tools.** Such preventive safety measures reduce the risk of starting the petrol tool accidentally. Hair can be caught in moving parts.
  - d) Store idle petrol tools out of the reach of children and do not allow persons unfamiliar with the petrol tool or these instructions to operate the petrol tool.** Petrol tools are dangerous in the hands of untrained users.
  - e) Maintain petrol tools. Check for misalignment or binding of moving parts, breakage of parts and any other condition that may affect the petrol tool's operation.** If damaged, have the petrol tool repaired before use. Many accidents are caused by poorly maintained petrol tools.
  - f) Keep cutting tools sharp and clean.** Properly maintained cutting tools with sharp cutting edges are less likely to bind and are easier to control.
  - g) Use the petrol tool, accessories and tool bits etc., in accordance with these instructions and in the manner intended for the particular type of petrol tool, taking into account the working conditions and the work to be performed.** Use of the petrol tool for operations different from intended could result in a hazardous situation.
  - h) This appliance is not intended for use by persons (including children) with reduced physical, sensory or mental capabilities, or lack of experience and knowledge, unless they have been given supervision or instruction concerning use of the appliance by a person responsible for their safety.**
  - i) Children should be supervised to ensure that they do not play with the appliance.**
  - 4) Service**
    - a) Have your petrol tool serviced by a qualified repair personnel using only identical replacement parts.** This will ensure that the safety of the petrol tool is maintained.

# ADDITIONAL SAFETY INSTRUCTIONS FOR BLOWERS

- Always wear adequate protective clothing when operating the blower to avoid injuries to face, eyes, hands, feet, head or hearing. Use safety glasses or a face shield, high boots or sturdy shoes, long trousers, work gloves, a hard hat and ear defenders.
- Do not start the tool when it is upside down or when it is not in the operating position.
- Switch the motor off when the tool is not being used, left unattended, being cleaned or being moved from one place to another.
- Do not operate the tool near people, especially children or pets. Turn it off if they get too close. Maintain a safe distance of at least 5m from other people when using the tool.
- Never direct the blower direction nozzle towards bystanders or pets. Never blow debris in the direction of bystanders or pets. The operator is responsible for accidents or hazards occurring to other people or their property.
- Keep all the air intakes and the blower tube free of dust, lint, hair and other material that may cause a reduction in air flow.
- Keep a balanced and stable stance while using the tool. Do not start the tool in enclosed or poorly ventilated spaces or in the presence of inflammable and/or explosive substances such as liquids, gasses and powders.
- Do not get distracted and always concentrate on what you are doing. Use common sense. Never operate the tool when you are tired, sick or under the influence of alcohol or other drugs.

- Do not operate this appliance with long loose hair or loose fitting jewellery. Tie long loose hair back and remove loose fitting jewellery.
- Only operate the tool during broad daylight or with adequate artificial light.
- When the tool is not in use, store it in a dry place and out of reach of children.
- Only use the tool according to the instructions given in this manual.
- Check regularly that the screws are tight.
- Ensure you use oil-mix fuel. Ensure that you mix 40 parts unleaded fuel to 1 part 2-stroke oil. If not, the engine will overheat and cause damage to your blower.



**WARNING!** When servicing, use only identical replacement parts. Use of any other parts may create a hazard or cause product damage. To ensure safety and reliability, all repairs should be performed by a qualified service technician.



**WARNING!** This appliance is not intended for use by young or infirm persons unless supervised by a responsible person to ensure that they can use the appliance safely. Young children should be supervised to ensure that they do not play with the appliance.



# WARRANTY

IN ORDER TO MAKE A CLAIM UNDER THIS WARRANTY YOU MUST RETURN THE PRODUCT TO YOUR NEAREST BUNNINGS WAREHOUSE WITH YOUR BUNNINGS REGISTER RECEIPT. PRIOR TO RETURNING YOUR PRODUCT FOR WARRANTY PLEASE TELEPHONE OUR CUSTOMER SERVICE HELPLINE:

**Australia 1800 069 486**

**New Zealand 0508 069 486**

TO ENSURE A SPEEDY RESPONSE PLEASE HAVE THE MODEL NUMBER AND DATE OF PURCHASE AVAILABLE. A CUSTOMER SERVICE REPRESENTATIVE WILL TAKE YOUR CALL AND ANSWER ANY QUESTIONS YOU MAY HAVE RELATING TO THE WARRANTY POLICY OR PROCEDURE.

The benefits provided under this warranty are in addition to other rights and remedies which are available to you at law.

Our goods come with guarantees that cannot be excluded at law. You are entitled to a replacement or refund for a major failure and for compensation for any other reasonably foreseeable loss or damage. You are also entitled to have the goods repaired or replaced if the goods fail to be of acceptable quality and the failure does not amount to a major failure.

Generally you will be responsible for all costs associated with a claim under this warranty, however, where you have suffered any additional direct loss as a result of a defective product you may be able to claim such expenses by contacting our customer service helpline above.

## 1 YEAR WARRANTY

Your product is guaranteed for a period of 12 months from the original date of purchase. If a product is defective it will be repaired in accordance with the terms of this warranty.

Warranty excludes consumable parts, for example: filters, spark plugs and included accessories.

## WARNING

**The following actions will result in the warranty being void.**

- Professional, Industrial or high frequency use.
- If the tool shows signs of damage or defects caused by or resulting from abuse, accidents or alterations.
- Failure to perform maintenance as set out within the instruction manual.
- If the tool is disassembled or tampered with in any way.