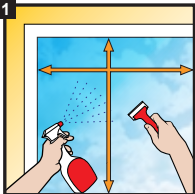


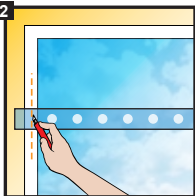
## INSTALLATION

1



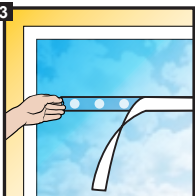
Thoroughly clean glass using an ammonia-free cleaner, scraper & lint-free cloth. Measure area to be covered.

2



On a clean flat surface, cut decal 20-25mm wider than required on each side to ensure coverage.

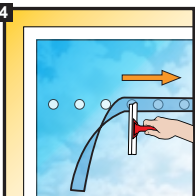
3



Peel away **PAPER** backing exposing adhesive side ensuring frosted decals **REMAIN ON CLEAR SIDE** of film.

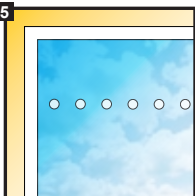
**NOTE: APPLICATION SOLUTION MAY BE REQUIRED TO ASSIST IN INSTALLATION**

4



Pressing firmly apply adhesive side to glass in desired location. Rub out any creases or airbubbles. Gently peel away clear film layer.

5



Once backing film is removed, remove any remaining air bubbles pressing firmly with fingers. Once dry, wipe down with soft cloth.