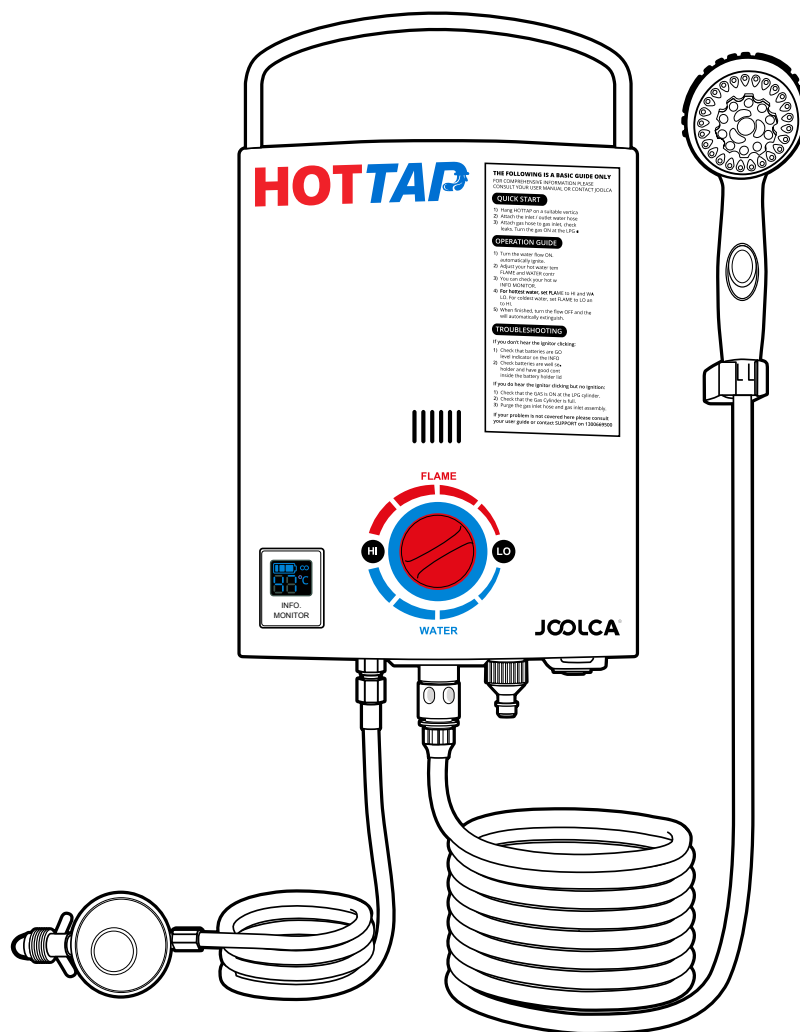


HOTTAP OUTING

MODEL: JCA11009



IMPORTANT!

It is important that you read these instructions carefully and understand the operation and safety features of this appliance. Familiarise yourself with the appliance before connecting it to the gas container. Failure to follow the warnings and instructions may result in damage to unit and / or serious injury. Keep these instructions for future reference.



Joolca Well of Wisdom

Check out the Joolca Well of Wisdom. There's a wealth of information on your product including some very handy getting started videos & troubleshooting tips.

Visit <http://www.joolca.com.au/help> or <http://www.joolca.co.nz/help> and navigate to your product.

If you do run into a problem where you need assistance please contact the Joolca Support team directly at 1300 669 500 / support@joolca.com.au in Australia or at (09) 887 9334 / support@joolca.co.nz if you're in New Zealand.



Register Your Joolca 2 Year Guarantee Today

Thank you for choosing to buy a Joolca Product.

Your Joolca product will be covered for parts & labour for 2 years from the date of purchase.

If you purchased directly from us, your items are already registered.

If you purchased through from of our retailers, please register online.

<http://www.joolca.com.au/register> or <http://www.joolca.co.nz/register> depending on your region.



CAUTION!

This appliance is not intended for the supply of drinking water.



IMPORTANT!

This appliance is designed to be used with a source water temperature of 20°C or below. If the temperature of the outlet water exceeds 50°C the burners will shut off. You will be required to turn the water flow off and back on to reignite the burners.



WARNING!

This appliance is intended for the supply of heated water for the purpose of washing and cleaning only.



WARNING!

Check and confirm safe water temperature before using this appliance. Water from this appliance may be very hot.



CAUTION!

This appliance must be protected from rain.

SPECIFICATIONS - HOT WATER

Dimensions: 370H x 275W x 165Dmm

Weight: 4.3kg

Approval Number: GMK10121

Run Time from 9kg Bottle: ~15hrs

Battery: 2 x DD (for ignition only)

Flow Rate: 4L - 6L Per Minute

Max. Temp: 50°C

Min. Water Pressure: 70kPa

Max. Water Pressure: 900kPa

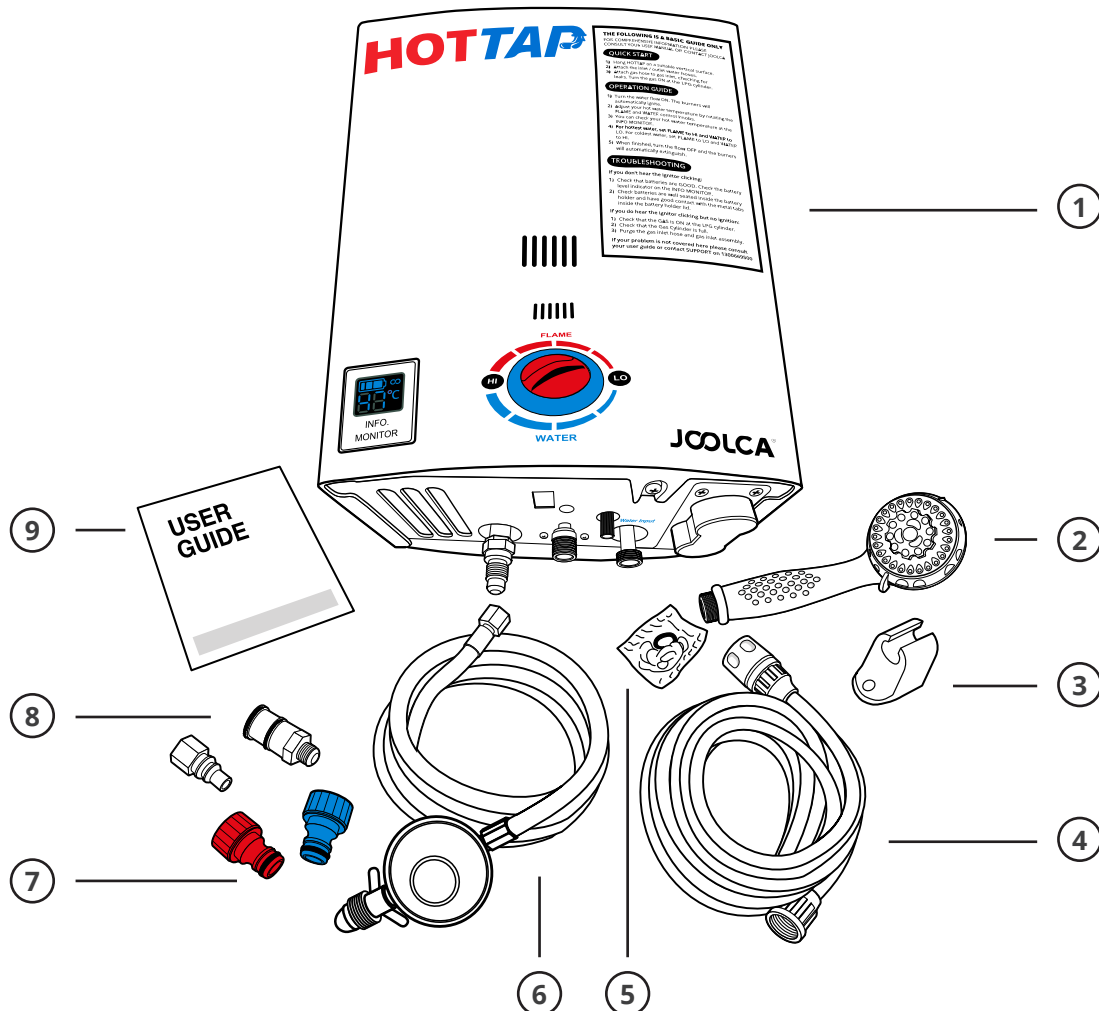
Gas Hose Length: 1.2m

Shower Hose Length: 5m

Normal Gas Consumption: 28MJ/h

Injector Size: 0.62mm

IN THE BOX - HOT WATER



1. HOTTAP Water Heater

2. Shower Head

3. Shower Head Holder

4. 5M Shower Hose

5. Mounting Screws

6. 1.2M Gas Hose

7. Water Inlet & Outlet Adapters

8. GASKNECT Quick Coupler

9. User Guide

SPECIFICATIONS - PUMPING

Self Priming Height: 1.8m

Max Pressure: 60 PSI

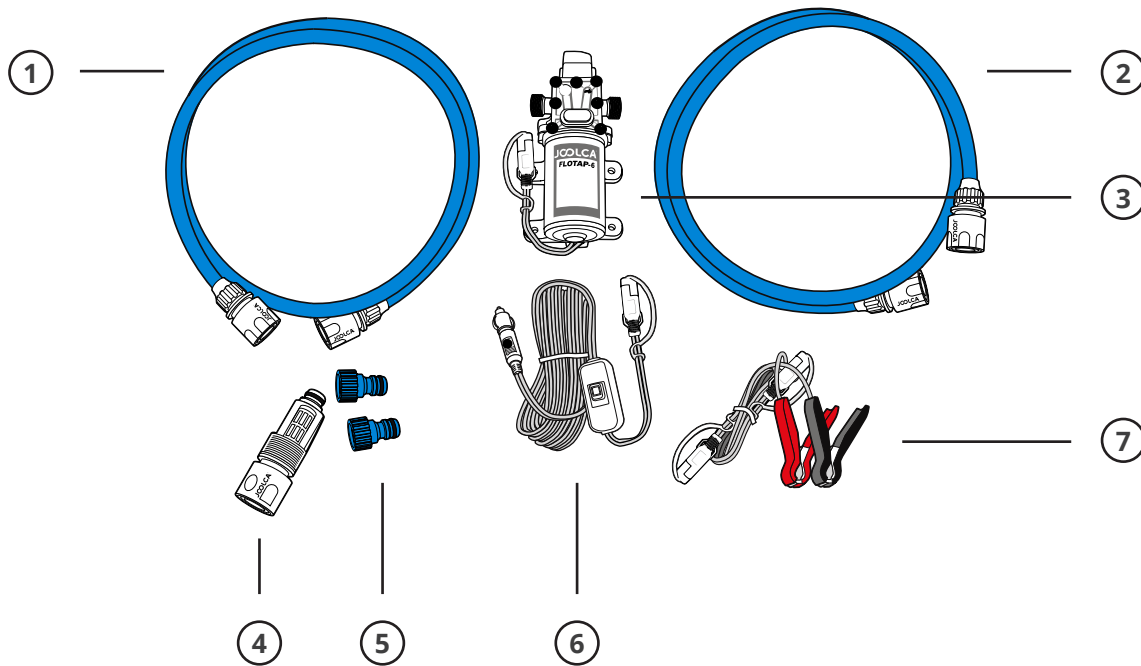
Open Flow: 6 LPM

Duty Cycle: Intermittent (Max Continuous Use: 20 min)

Volts: 12V DC

Max Amps: 5.8 A

IN THE BOX - PUMPING



- 1. 1.5m Inlet Hose
- 2. 2.5m Outlet Hose

- 3. FLOTAP6 Pump
- 4. Inlet Filter
- 5. 2 x Blue Quick Connect Adapters

- 6. 7m Cigarette Socket Lead
- 7. 1m Alligator Clip Lead

GENERAL WARNINGS

This appliance shall only be used with the Australian Approved 1200mm ULPG gas hose and regulator assembly supplied with the appliance and must be connected only to a ULPG gas cylinder certified to AS2469 standards fitted with POL connections only.

IT MAY BE HAZARDOUS TO ATTEMPT TO FIT OTHER TYPES OF GAS CONTAINERS

This appliance is to be stored in a dry and well-ventilated location free from direct sunlight. Do not store when still connected to the cylinder. Make sure that the cylinder is disconnected and is stored in a well-ventilated area, free from direct sunlight, heat and ignition sources and out of reach of children. If being stored indoors, ensure that the location complies with the standard AS/NZS1596.

This appliance must only be serviced by an authorized service agent, return to your place of purchase for service and repair.

DANGER!

- This appliance is designed for outdoor use only.
- Use only in well ventilated areas.
- Do not use this appliance if it has damaged or worn seals.
- Do not use this appliance if it is leaking, damaged, or does not operate properly.
- CAUTION: Accessible parts may be very hot. Keep young children away.

• USE OUTDOORS ONLY

- This appliance shall only be used in an above ground open-air situation with natural ventilation, without stagnant areas, where gas leakage and products of combustion are rapidly dispersed by wind and natural convection.
- Do not use adaptors or modify the appliance to fit

other connectors or cylinders.

- When using this appliance, children must be supervised by an adult at all times.
- Never leave the appliance unattended when operating.
- Do not use as a cooking appliance or modify for any other reason.

CARBON MONOXIDE HAZARD

ONLY USE IN WELL-VENTILATED AREAS.

CARBON MONOXIDE HAZARD - USING THIS APPLIANCE IN AN ENCLOSED SPACE MAY CAUSE DEATH. DO NOT USE IN CARAVANS, TENTS, MARINE CRAFT, CARS, MOBILE HOMES OR SIMILAR LOCATIONS.

IMPORTANT

- Avoid twisting and kinking the ULPG Gas hose.
- If there is a leak on your appliance (smell of gas), immediately attempt to turn off the cylinder valve. Remove the appliance to a well-ventilated location away from any ignition source. Check for leaks using soapy water. Do not try to detect leaks using a flame.
- Do not attempt to move or relocate the appliance when it is operating.
- Extinguish the burner and allow to cool. Disengage the gas cylinder then move the appliance.

CHECK FOR GAS LEAKS

- Check that seals between the appliance and the gas container are in place and in good condition before connecting the gas container.
- Only use the hose assembly as supplied with this appliance for connection to the cylinder – **DO NOT USE ADAPTORS.**

- Check that all connections are tight and that the gas cylinder connection has been tightened before you turn the cylinder gas valve on.
- **NEVER CHECK FOR LEAKS WITH A FLAME OR PILOT LIGHT.**
- Using soapy water, coat all connections. If bubbles appear turn the cylinder gas control off and retighten the connection before re-testing.
- Inspect the appliance regularly for signs of wear, leaks or incorrect operation. If symptoms such as flaring of the burners, issues with lighting, damages to hoses or connections or leaks from seals or gas controls are identified do not attempt to repair, contact the Joolca Customer Care Team.
- To check if gas remains in the cylinder, disconnect from the appliance and hold the cylinder in a vertical position then shake from side to side, if there is a sound or feel of liquid movement inside, the cylinder contains gas.
- When changing gas cylinders ensure this is conducted outside in a well-ventilated location, free from people, animals and ignition sources such as naked flames, pilot lights and electrical equipment such as heaters or elements.

ANY ENCLOSURE IN WHICH THE APPLIANCE IS USED SHALL COMPLY WITH ONE OF THE FOLLOWING:

A) AN ENCLOSURE WITH WALLS ON ALL SIDES, BUT NO OVERHEAD COVER:

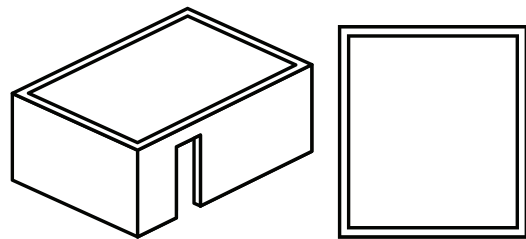


FIGURE A1 – Outdoor Area Example 1.

B) WITHIN A PARTIAL ENCLOSURE THAT INCLUDES AN OVERHEAD COVER AND NO MORE THAN TWO WALLS:

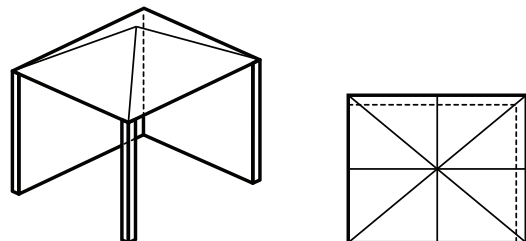


FIGURE B1 – Outdoor Area Example 2.

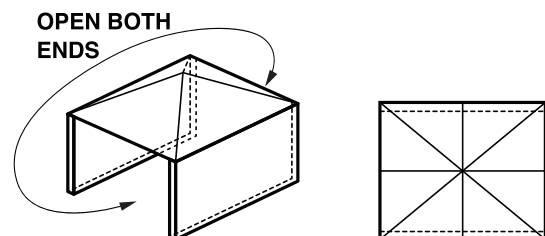


FIGURE B2 – Outdoor Area Example 3.
With both ends open.

SAFETY INSTRUCTIONS

This appliance must only be used in an above ground open-air situation with natural ventilation, without stagnant areas, where gas leakage is rapidly dispersed by wind and natural convection.

The following figures are diagrammatical representations of outdoor areas suitable for use with this appliance. Rectangular areas have been used in these figures – the same principles apply to any other shaped areas.

C) WITHIN A PARTIAL ENCLOSURE THAT INCLUDES AN OVERHEAD COVER AND MORE THAN TWO WALLS, THE FOLLOWING SHALL APPLY:

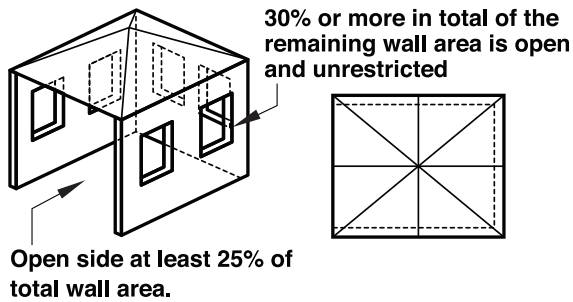


FIGURE C1 – Outdoor Area Example 4. With the open side at least 25% of the total wall area and 30% or more in total of remaining wall area is open and unrestricted.

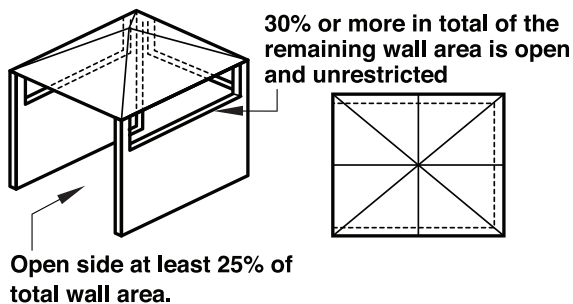


FIGURE C2 – Outdoor Area Example 5. With the open side at least 25% of the total wall area and 30% or more in total of the remaining wall area is open and unrestricted.

SAFETY FEATURES

This appliance is equipped with the following safety features:

Over temperature sensor – The appliance will not allow the burner to remain in operation once the outlet water temperature reaches 50°C. To relight the burner you will need to turn the water flow off and back on.

Water flow sensor – Water must be flowing through the system to allow the burner to ignite. In the case that the water supply is restricted or ceases, for example if you close the water flow at the shower nozzle, the burner will be extinguished and will not relight until the water flow recommences.

HANGING THE APLIANCE

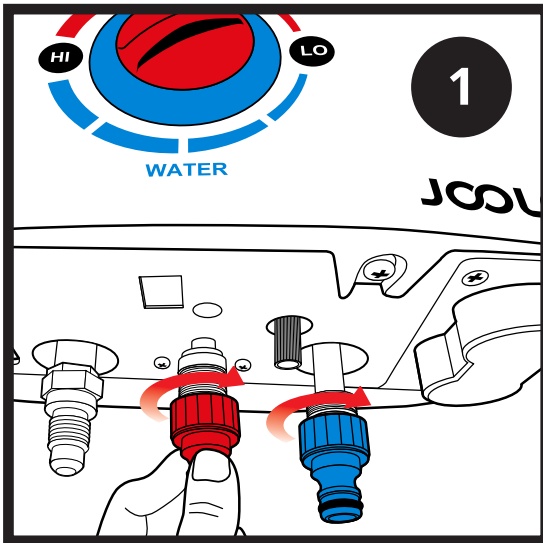
Outdoor use only - The appliance must be used outdoors only and is to be operated no closer than 500mm from the sides and 1000mm from above to all combustible surfaces, fabrics, flammable materials and people.

The appliance is designed to be hung upright against a non-combustible vertical surface. Do not operate from a non-upright position doing so can be dangerous and will damage the appliance.

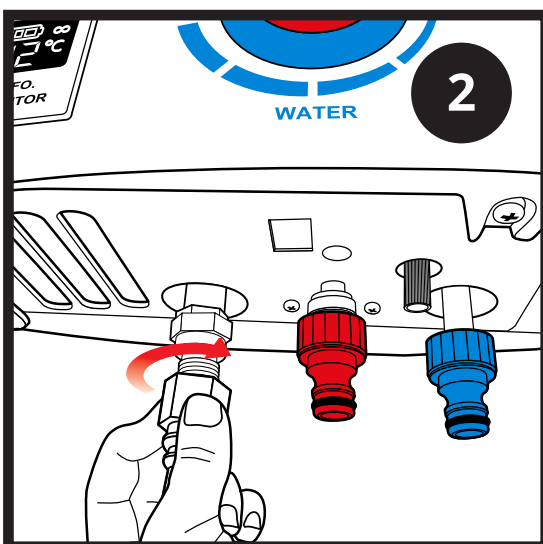
During operation ensure that both air inlets and the top exhaust are kept free from obstructions and closure.

PREPARING FOR USE – HOT WATER

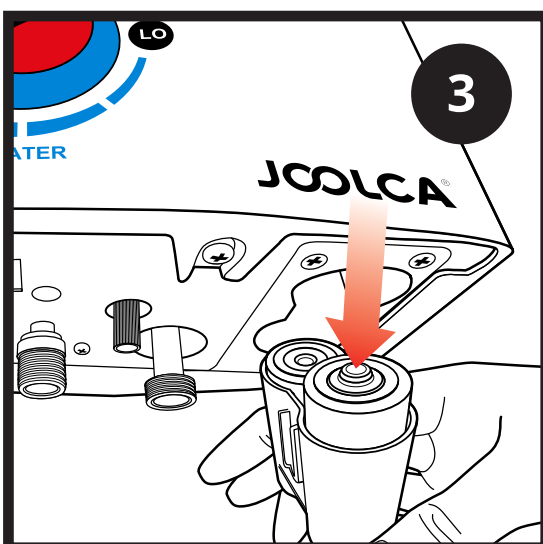
JCOLCA



1. Connect the 'blue' and 'red' Joolca quick connect fittings to the 'Water Input' and 'Water Output' threads respectively.



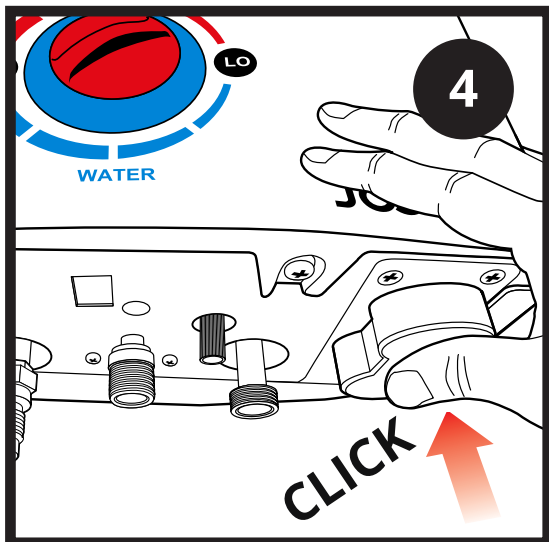
2. Connect the male side of the GASKNECT quick coupler to the gas inlet of the appliance.



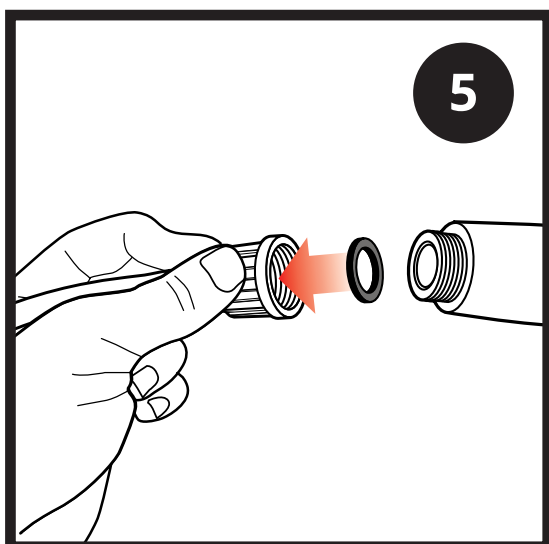
3. Observing the correct polarity, install 2 D-cell batteries into the battery box.

PREPARING FOR USE – HOT WATER

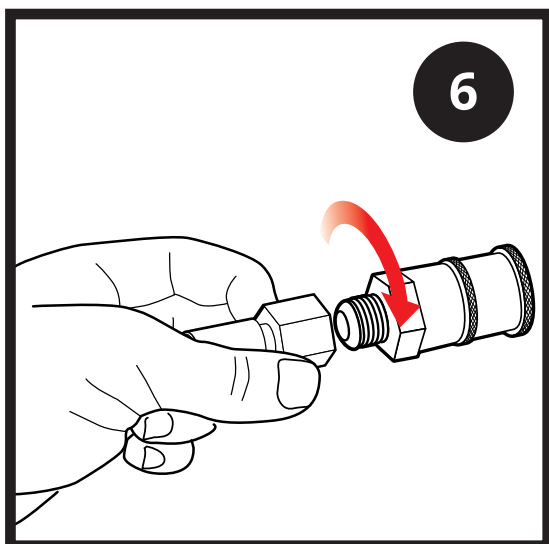
JCOLCA



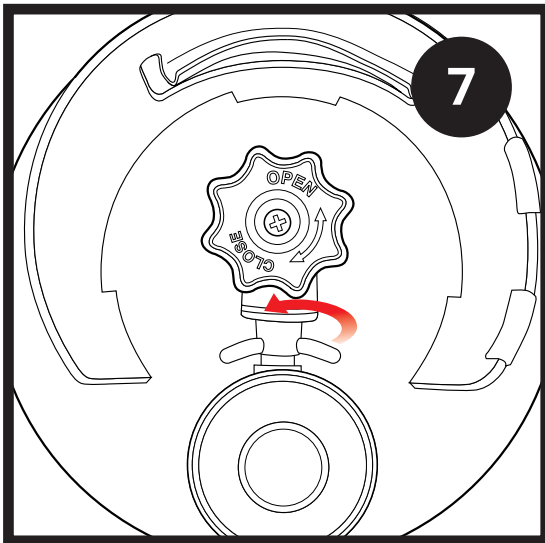
4. Press in to close the compartment.



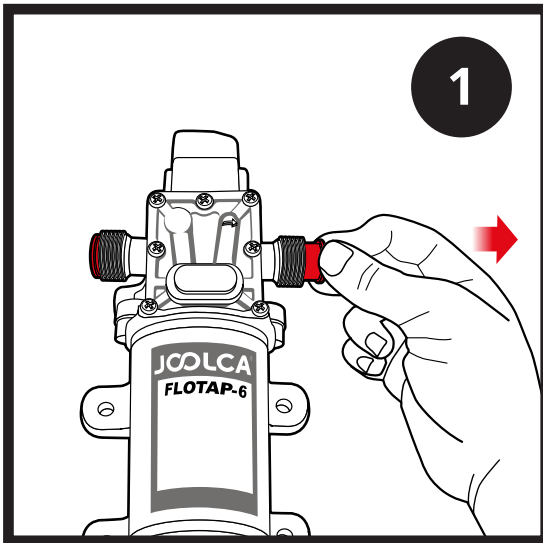
5. To connect the showerhead to the shower hose, place one of the washers (contained in the pack) between the threaded connection of the shower hose and the shower head.



6. Attach the female side of the GASKNECT quick coupler to the end of your gas hose. Tighten with spanner.



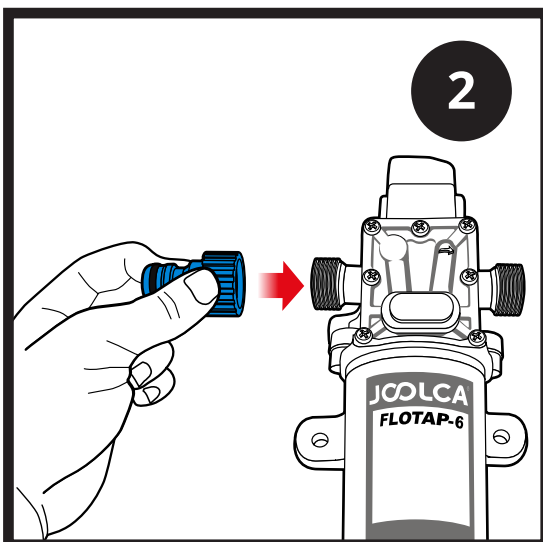
7. Connect the gas regulator to the POL ULPG gas cylinder. Hand-tighten the connection in an anti-clockwise direction. Ensure gas is in the 'OFF' position.



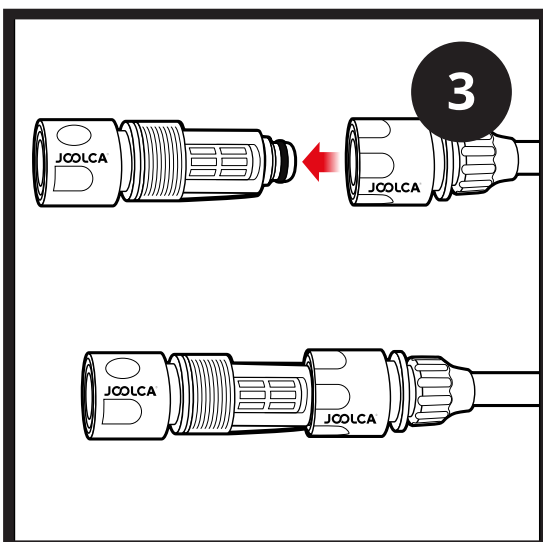
NOTE

The FLOTAP6 pump is not designed to be used continuously for periods longer than 20 minutes at a time. After using the pump for this period of time, allow it to rest for a few minutes before using again.

1. Remove Red Lugs from FLOTAP6 Inlet and Outlet.



2. Attach the Blue Quick Connect Adapters to the Pump Inlet & Outlet.



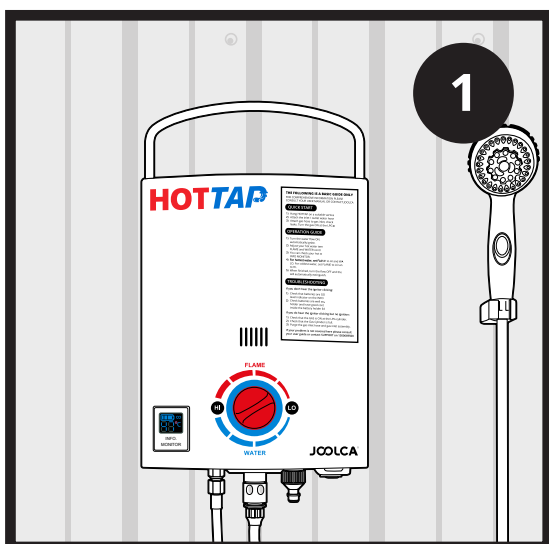
3. Attach the Suction Filter to the end of the suction Hose (1.5m Blue Hose).



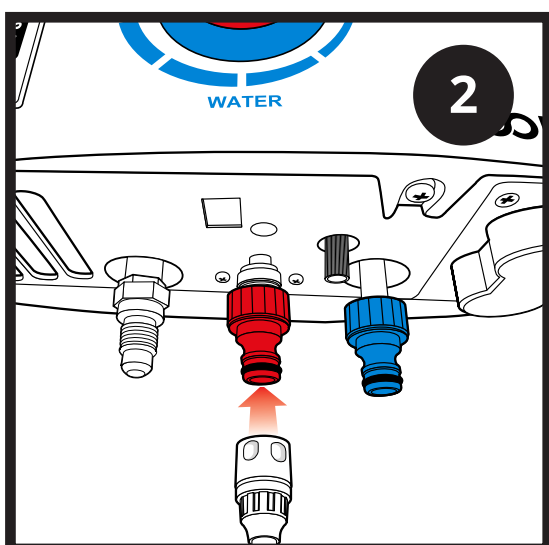
NOTE

HOTTAP can be used with a water input source that provides at least 70kPa of pressure. This guide will use the FLOTAP Low Voltage Pump as the water input source.

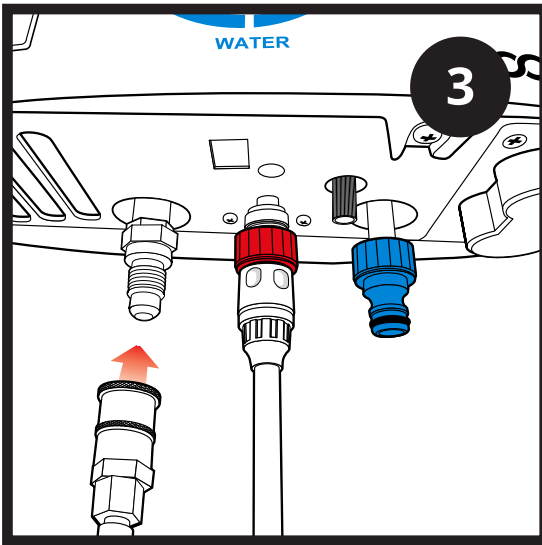
HOTTAP can also be used with mains water from a garden hose if available. If you need assistance with use on other water sources please call the Joolca Customer Care Team.



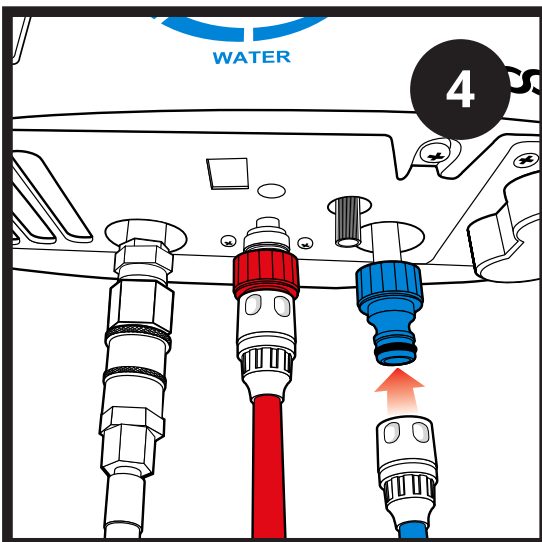
1. Find a suitable, sturdy, non-combustible vertical surface to hang the appliance on via the mounting tabs. The surface should be at least 500mm clear from the sides and 1000mm from the top of all combustible surfaces, fabrics, flammable materials and people.



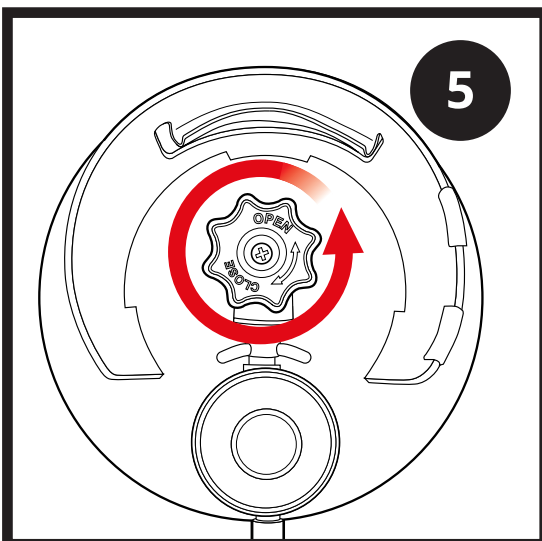
2. Attach the shower hose to the 'red' quick connect fitting (water output).



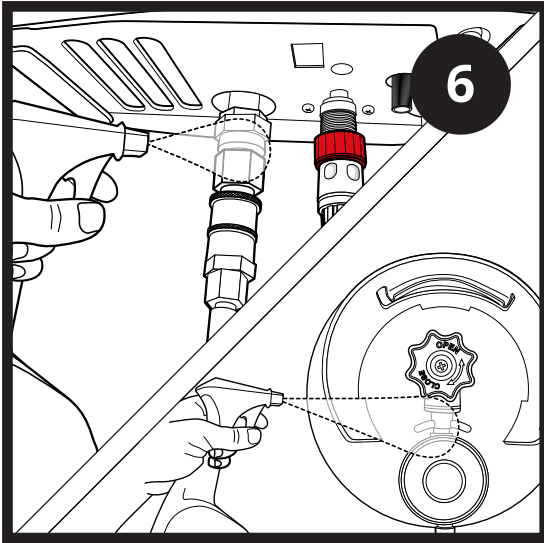
3. Quick Connect the flexible gas hose to the 'gas inlet'.



4. Attach one side of your 2.5m Blue Hose to the 'Blue' Quick Connect Fitting (Water Input) on HOTTAP.

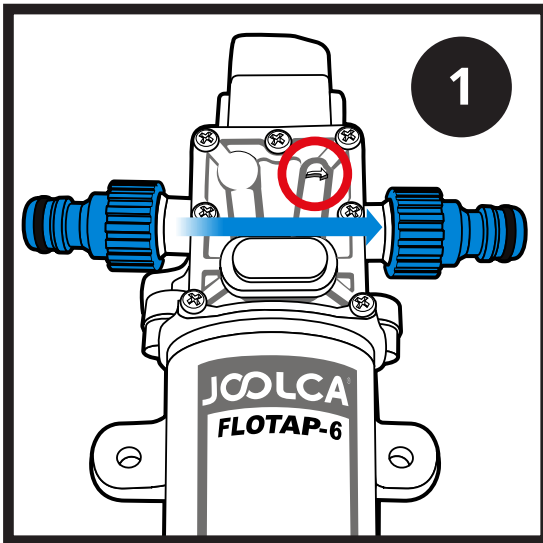


5. Turn the gas cylinder on, 'Open', in an anticlockwise direction one full turn. Check the connection for leaks by coating orifices with soapy water. Make sure to also check the connection between the gas hose and the quick connect fitting you attached earlier. DO NOT use a flame. If bubbles occur or a leak is detected, turn the cylinder valve off, 'Close', retighten all connections and retest.

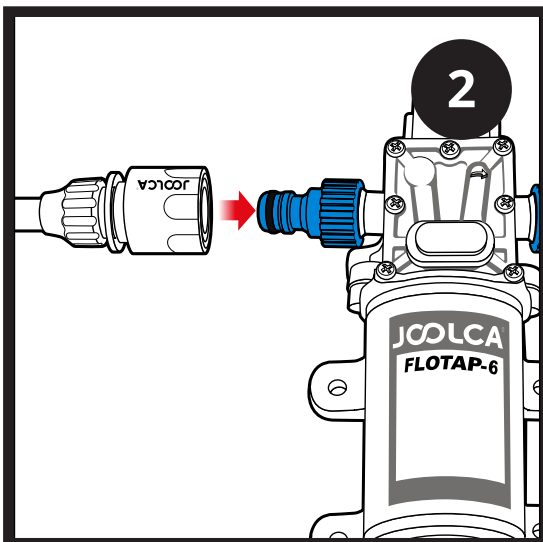


6. Once it has been determined that there are no leaks present, the appliance is ready to use. Turn the gas cylinder off.

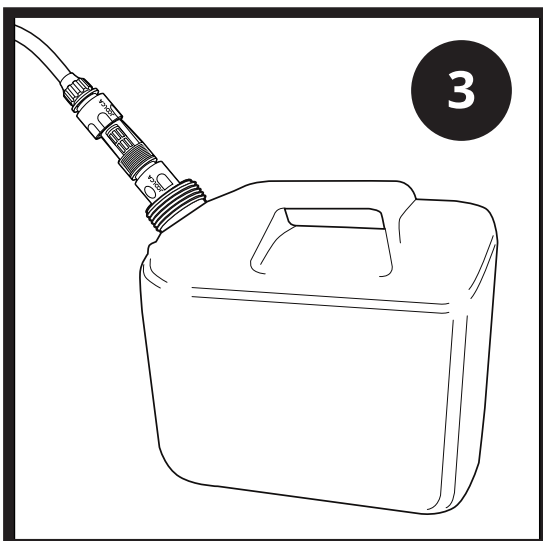
Note: The gas cylinder must be positioned away and to the side of the appliance. It must never be directly beside, below or above the appliance.



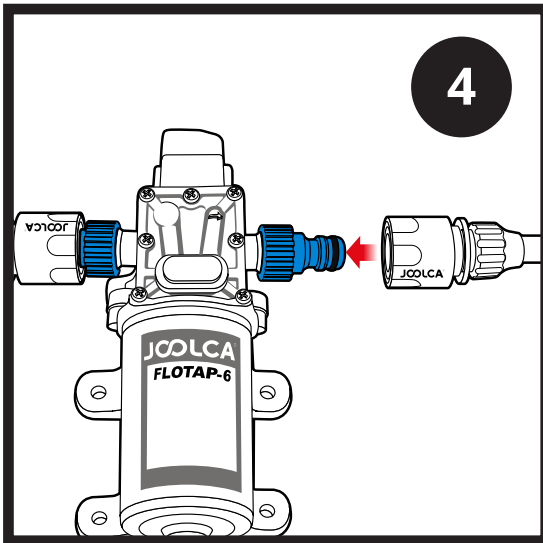
1. Check Flow Direction Arrow. The suction side is on the left side and the outlet is on the right side.



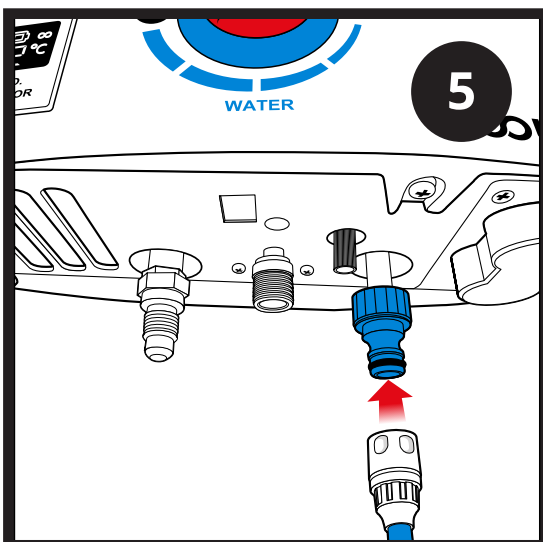
2. Attach your Inlet hose to the suction side of the pump. This is the hose that has the suction filter attached to one end.



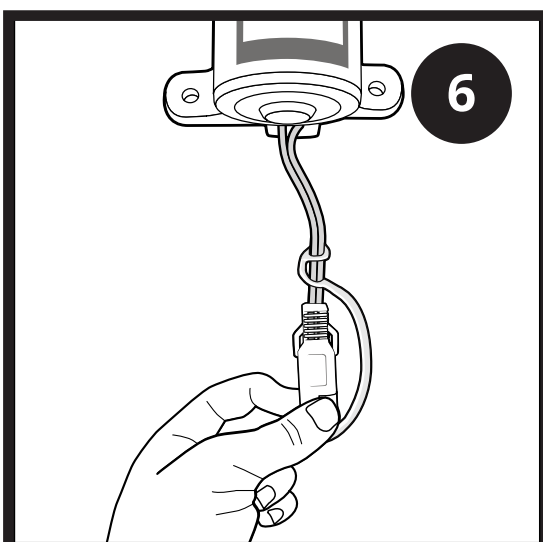
3. Dunk the suction side of your water inlet hose into your water container



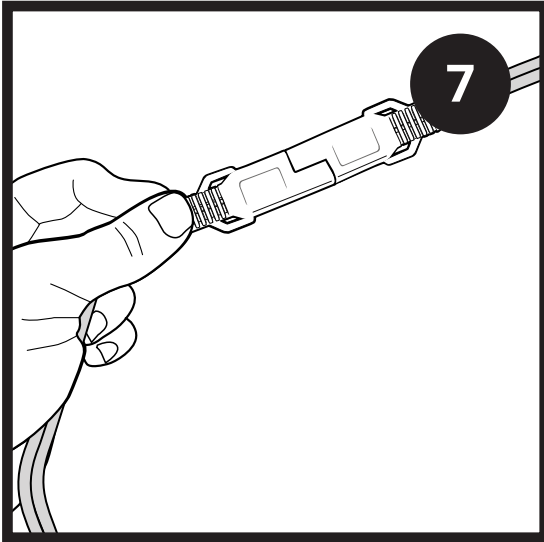
4. Attach the outlet hose (2.5m Length Blue Hose) to the Outlet side of the FLOTAP6.



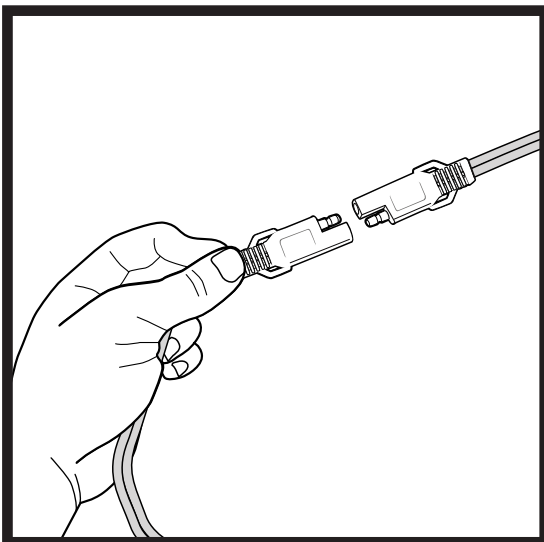
5. Make sure you have correctly connected the Outlet Hose (2.5m Length Blue Hose) to the hot water INLET side of the HOTTAP (From Step 4).



6. Remove the Blue Lid on the Quick Connect 12V Plug.

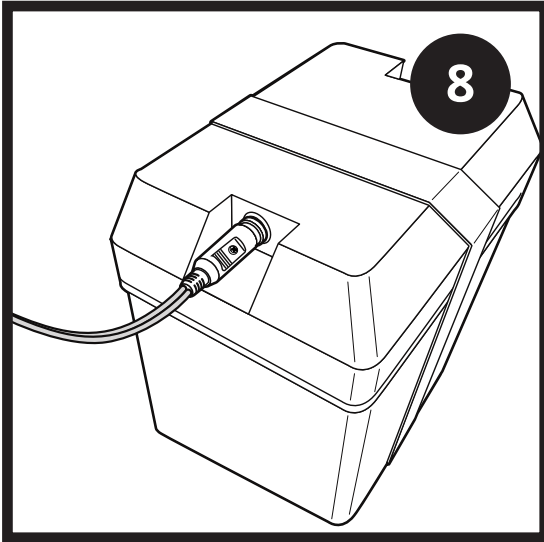


7. Attach the Quick Connect 12V Plug to either the 7m Cigarette Socket Lead (if you want to plug into a cigarette socket) or the 1.5m Alligator Clip lead (if you want to connect directly to a 12V battery).

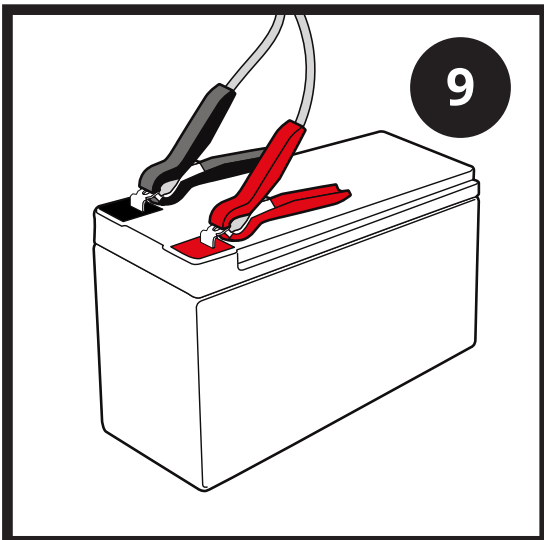


NOTE

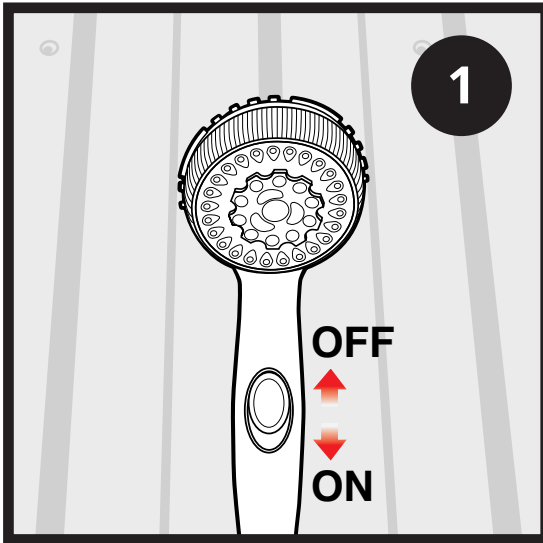
Ensure that the 'On/Off' Switch is in the off position for now, or if using the Alligator Clip leads, leave the final connection disconnected for now.



8. If you're using the 7m Cigarette Socket Lead, plug the cigarette socket into your power socket (either on a portable battery or into your vehicle).



9. If you're using a portable battery, connect the Red Clip to the +ve Side and Black Clip to -ve side.



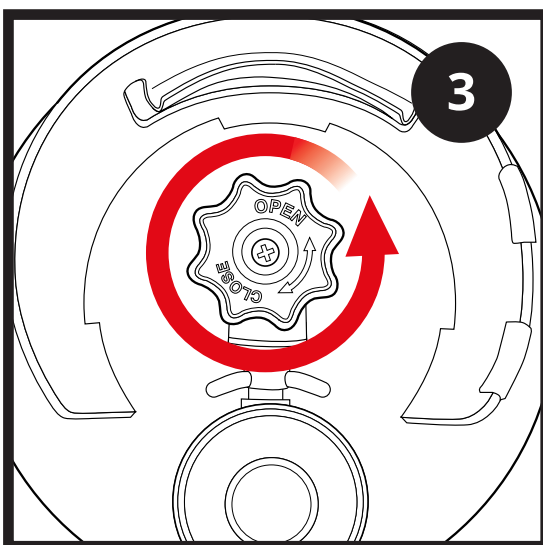
1. Ensure that the spray pattern setting on the shower nozzle handle is in the 'Off' position.



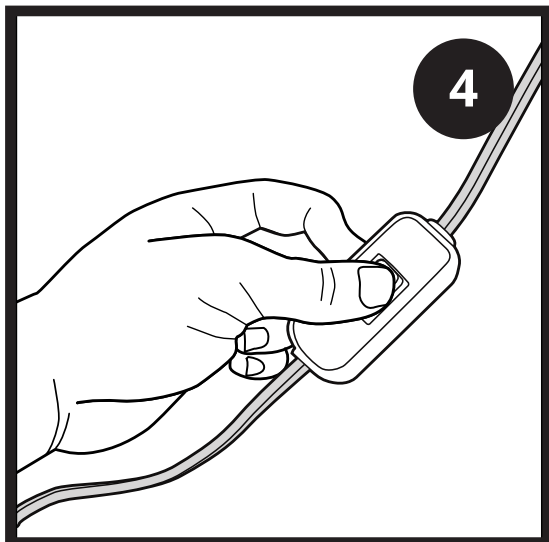
IMPORTANT!

It is important that when starting the appliance that the **gas** regulator is set to the '**minimum**' position (i.e. Red Control Knob turned completed clockwise to the 'LO' setting).

It is important that when starting the appliance that the **water** regulator is set to the '**maximum**' position (i.e. Blue Control Knob turned completed clockwise to the 'HI' setting).



3. Turn the gas cylinder on, 'Open', in an anticlockwise direction one full turn.

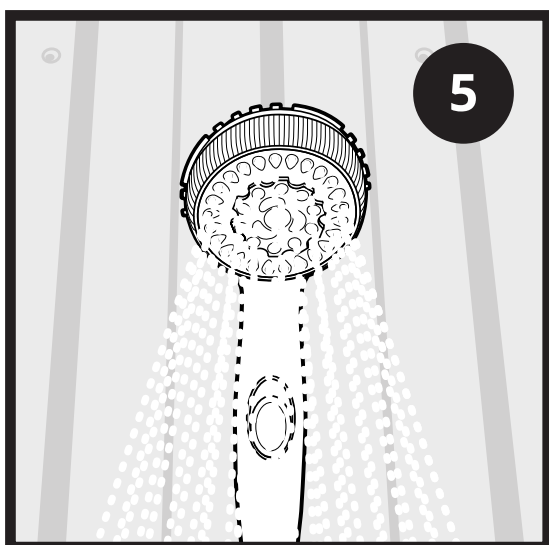


4. Turn the On/Off Switch to the 'On' Position to provide power to your pump. Or, If you are using the Alligator Clip's, connect them to the terminals.

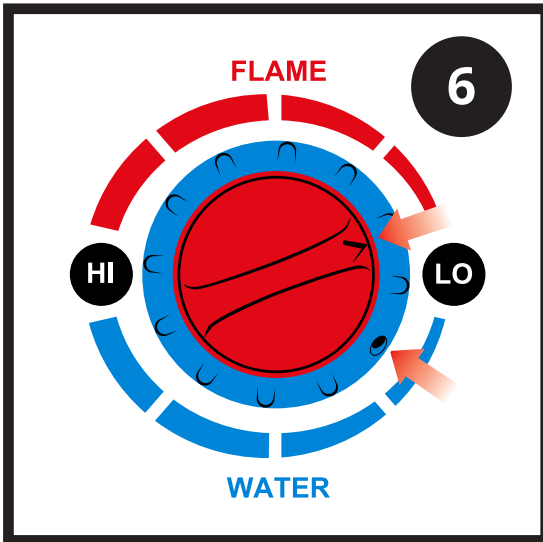


NOTE

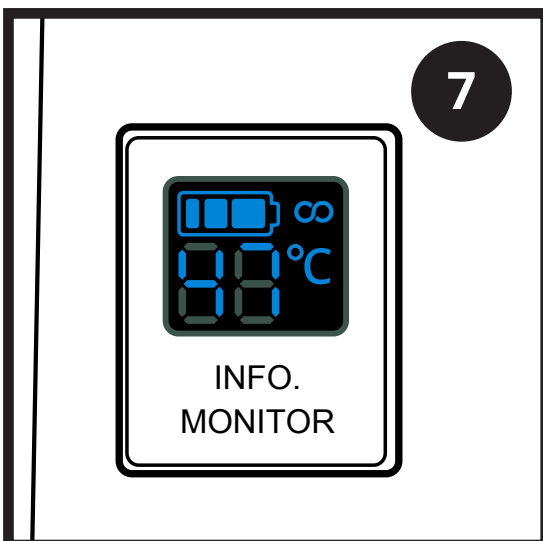
Your system should now be set up and your pump will turn on and run until the system is primed – after which the pump will turn off automatically. Now when you flick the switch on your HOTTAP shower head, the pump will automatically turn on and ignite the HOTTAP and when you are finished you will be able to turn off the whole system by flicking the shower head 'off' again.



5. When ready, rotate the ring on the shower nozzle to the 'On' position. Water will start to flow.



6. Adjust the temperature and flow rate through the shower head by adjusting the 'Flame' and 'Water Flow' knobs.



7. Take care to test the temperature of the water flowing from the shower head as it may be hot enough to cause injury.



NOTE

For higher temperatures increase the 'Flame' regulator control and decrease the 'Water Flow' regulator control.

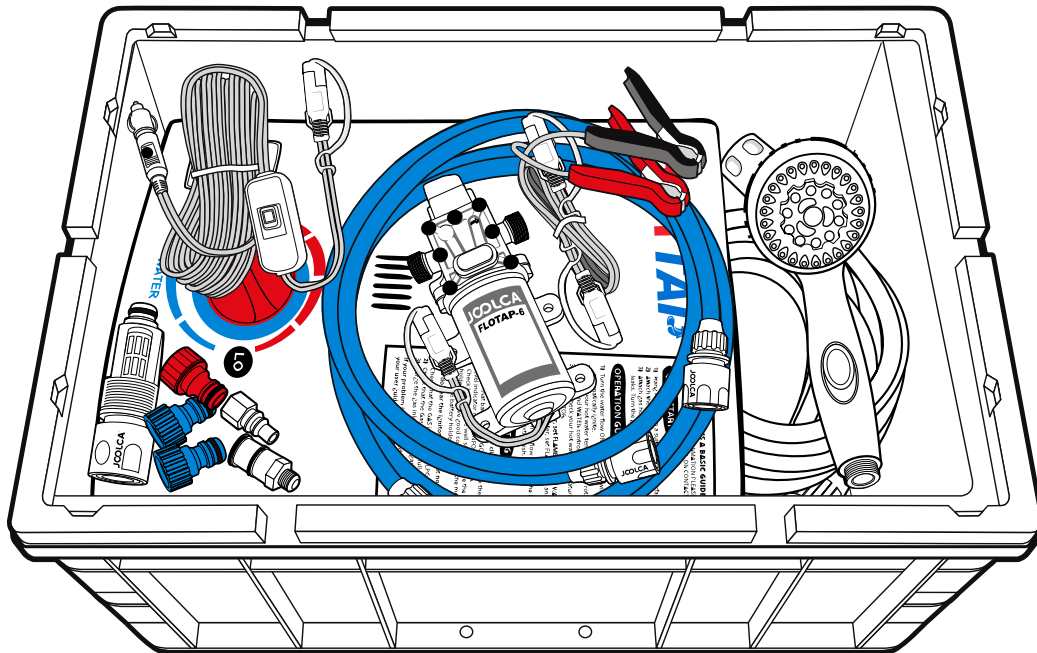
The water flow can be stopped at any time by sliding the regulation switch on the shower head to the 'Off' position. The burner will extinguish.

To reignite the burner, slide the flow regulation switch on the shower head to the 'On' position. Water flow will commence and the burner will once again ignite.



With the appliance operating, turn the gas cylinder off, 'Close'. The burner will continue to operate until all gas has been bled from the gas hose and regulator assembly.

1. Turn off the power to FLOTAP pump and disconnect from the 'water input'. Disconnect the shower hose from the 'Water Output'. Allow all water to drain out from hosing before rolling up and storing away.
2. Disconnect the gas regulator and hose assembly from the appliance and store away. To do this, first:
 - 2.1 Check that the appliance is fully extinguished; the gas cylinder control valve is in the fully off, 'Close', position and all surfaces are cool.
 - 2.2 Disconnect the gas hose from the appliance by pulling down on the female side of the GASKNECT quick coupler.
3. Pack all parts into a Storage Tub for transport.





Using warm, soapy water and a mild detergent wipe down all surfaces and areas of the appliance. Take care not to allow water to enter the top vent. Before each use, check that the screen filter on the 'Water Input' pipe is in place and cleaned of any particles.

DO NOT Submerge the appliance in a sink or bowl.

DO NOT Use abrasive cleaners or bleach.



Joolca Well of Wisdom

Check out the Joolca Well of Wisdom. There's a wealth of information on your product including some very handy getting started videos & troubleshooting tips.

Visit <http://www.joolca.com.au/help> or <http://www.joolca.co.nz/help> and navigate to your product.

This guide should be followed in case of failure of the appliance to operate correctly. If symptoms persist contact Joolca Customer Care.



IMPORTANT!

Do not attempt to repair or modify the appliance.

THE APPLIANCE WILL NOT IGNITE AT ALL

Ensure new batteries are installed in the correct polarity (+/-). Check the cap of the battery case for instructions on how they should be installed.

Check for sufficient water flow and pressure. The unit must have a minimum of 70kPa of sustained water pressure and at least 4LPM to activate the burners.

There is the possibility of finding some kind of epoxy or debris within the water regulator. Check that the water inlet filter screen is clean. To flush the system, connect the input water source to the 'Water Outlet' and turn on. Once complete, reconnect the appliance as per instructions.

If you can hear 'clicking', but no ignition, air may have contaminated the gas inlet. Unscrew the inlet gas connection a few turns until you can hear gas seeping from between the thread. Let it purge for a few seconds and re-tighten.



NOTE

Gas hose must be attached to the inlet thread while purging. Gas cylinder must be on, 'Open'.

Check that the shower flow water regulator is in the 'Open' position.

THE UNIT STARTS FOR A SHORT AMOUNT OF TIME AND THEN SHUTS OFF

Check for sufficient water flow and pressure. The unit must have a minimum of 70kPa of sustained water pressure and at least 4LPM to activate the burners.

Do not expose the water heater to strong winds as this may cause the flame to blow out.

WATER IS NOT HOT ENOUGH

Adjust the gas regulator and water regulator to meet your desired temperature. To increase temperature; turn the gas regulator control from minimum to maximum and turn the water regulator control from maximum to minimum.

Check source water temperature. If the source water temperature is too cold then you may need to 'cycle' the water through the system back into the source reservoir then through the appliance again to meet your desired temperature.

Check if there is a blue flame in the 'viewing window'. If you see a yellow flame it could mean a breakdown in the gas regulator - immediately shut down the unit. Please call Joolca Customer Service directly if this happens, **DO NOT** attempt to use the appliance.

THE PUMP ISN'T WORKING AT ALL

The fuse may be blown. Replace the fuse and try again. The fuse size is 10 amp.

Check that the FLOTAP is connected to a 12V power source and that the battery is adequately charged.

FLOTAP MAKES NOISE BUT DOES NOT PUMP WATER

Check to see if the red plastic lugs are still inside the water inlet and outlet valves. If they are, remove and try again.

Check to see if the inlet suction filter is clogged. Clean or back flush filter and try again.

THE FLOW & / OR PRESSURE SEEMS TO HAVE BEEN REDUCED

Check to see if there is a blockage in your hoses somewhere. Check all water hoses, filters, and the inlet fitting on your HOTTAP for debris blocking water flow.

Check your battery voltage in case a discharged battery is reducing power to the FLOTAP.

Check if you have loose fittings. Check the grey fittings at the ends of your water hoses as well as the blue quick connect adapters attached to your pump to ensure they're adequately tight and that there are no air leaks.



Your Joolca appliance will be covered for parts and labour for 2 years from the date of purchase, as detailed in the terms of the Joolca guarantee on the Joolca Website: <http://www.joolca.com.au/warranty> or <http://www.joolca.co.nz/warranty>

If you have a query about your Joolca appliance, call the Joolca Customer Care team quoting your serial number and details of where and when you purchased the appliance (If applicable). Alternatively, contact us via the website.

Most queries are answered on our support portal by visiting <http://www.joolca.com.au/help> if you're in Australia or <http://www.joolca.co.nz/help> if you're in New Zealand; or alternatively over the phone by one of our Joolca Customer Care Helpline staff.

Joolca Australia:

Website: <http://www.joolca.com.au>

Email: support@joolca.com.au

Joolca Customer Care: 1300 669 500

Head Office Address: Joolca Head Office – Australia, 45 Metrolink Circuit, Campbellfield, VIC, 3061

Joolca New Zealand:

Website: <http://www.joolca.co.nz>

Email: support@joolca.co.nz

Joolca Customer Care: (09) 887 9334