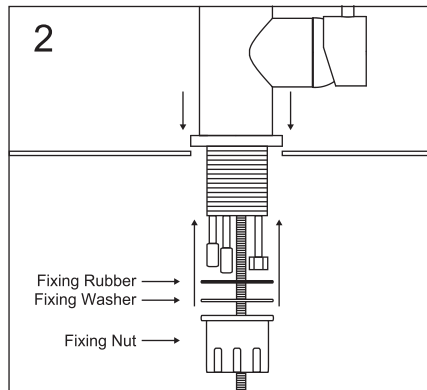
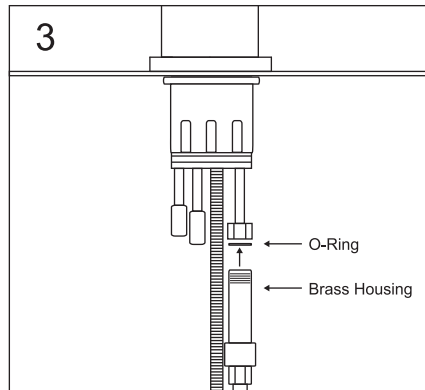


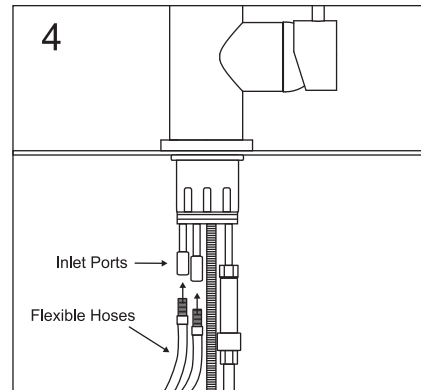
1. Remove fixing nut, rubber, and washer from the base of the mixer.



2. Place the mixer over the sink hole and tighten mixer to sink using the fixing nut, rubber, and washer removed in step 1. Handle should be positioned to the right hand side for operation.



3. Connect the pull out hose (which has a non-return valve in a brass housing pre-attached) to the female inlet attached to the copper tube that is coming from the mixer base. Make sure the small o-rings are fitted and a tight seal is achieved.



4. Connect the hot and cold water flexible hoses to the correct female inlet ports.

5. Connect the flexible hoses to the supply line, making sure that the hot water is connected to the hot water hose. Ensure the flexible hoses are not stretched, kinked or subject to abrasion. Do not expose the flexible hoses to naked flames or corrosive agents of any kind.

6. Prior to introducing the mains water supply, open the lever handle in the mixer position, midway between full hot and full cold. Introduce the mains water to thoroughly flush out the supply lines and mixer.

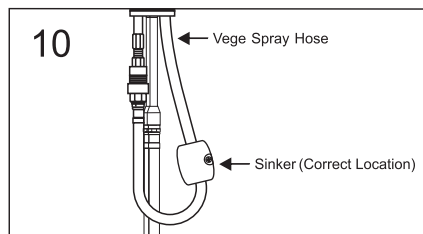
7. **NOTE:** Warranty claims WILL NOT be honoured where the ceramic cartridge has malfunctioned due to the presence in the water supply of: copper tube pieces, sand or dirt or stones, thread tape, other objects not normally present in potable water supplies, water pressure exceeding 500kPa.

**NOTE:** WELS approved flow restrictors are fitted in place of a standard aerator. This mixer should not be attached via the end of the spout to any additional water control device e.g. dishwasher, water filter.

8. Attach the retractable hand piece to the pull out hose, making sure the rubber o-ring is fitted and a tight seal is achieved.

9. Check all joints for leaks.

10. Attach sinker to vege spray hose.



### WORKING SPECIFICATIONS

In accordance with Australian standards requirements it is recommended that all tapware be installed by a licensed plumber. Please refer to the warranty card for service agreement.

\* Hot and cold water inlet pressures should be equal.

Inlet pressure range: 150-500kPa.

Pressure limiting valves should be installed where water pressure exceeds 500kPa.

**NOTE:** As per AS/NZS 3500.1-2003 (Clause 3.3.4) on new installations the maximum operating pressure at any outlet within a building must not exceed 500kPa.

\* All pipework must be thoroughly flushed prior to installation, as foreign materials may block the flow regulating device and reduce the flow of water. Aerator insert housing must be re-tightened to prevent removal by hand.

\* This mixer has a low flow rate and may not be suitable for connection to some Instantaneous Gas Water Heaters, some Tempering Valves, some Solar Water Heaters & some Thermostatic Mixing Valves. Check with the manufacturer of these products.

\* Not recommended for gravity feed systems, tank water systems or bore water systems.

\* Isolating stop taps must be fitted to the hot and cold water supply connections in accordance with local authority installation codes.

### CARING FOR YOUR PRODUCT

\* Under no circumstances should you install tapware using acetone silicones.

\* Never use harsh detergents or abrasive cleaners, as these will scratch the surface. Using a soft dry cloth or a soft cloth with warm soap water is recommended.

\* Where your tapware remains dry in use, a soft cloth can be used to remove surface dust. Alternatively, a wipe over with warm soapy water is all that is required to maintain the finish in perfect condition for a lifetime of use.

\* Use of wax based furniture cream should be avoided as these can result in a build up of deposits, which could detract from the appearance.

\* Do not use undue pressure and wipe in one direction only.

\* Flexible hoses may become damaged if exposed to caustic or corrosive substances/environments during installation or cleaning, such damage will not be covered by warranty. We recommend that flexible hoses are replaced every 5 years.