

# EDGE RANGE WOOD BOX INSTALLATION



1. Lay down the base with the wood grate facing upwards



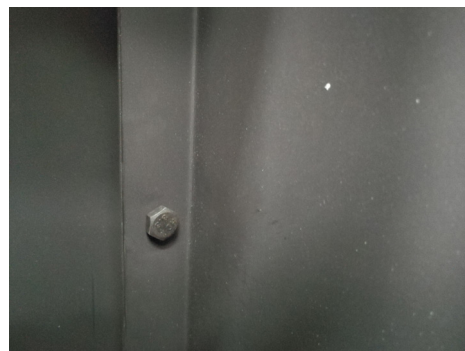
2. Assemble the front and back walls on with nuts provided. Nuts should only be hand tight at this stage.



3. Next, assemble the side walls by fastening the nuts provided to the welded bolts.



4. Tighten each nut and bolt that has not been tightened



5. Once the wood box is fully assembled and the nuts have been tightened, place the heater on top of the woodbox and tightly fasten washer and nut with a hex key.

