

# TECHNICAL DATA SHEET

## ANTI-LIGATURE HORIZONTAL SECURITY TOILET GRAB BARS



### ANTI-LIGATURE HORIZONTAL TOILET GRAB BAR SA72BP-001-36

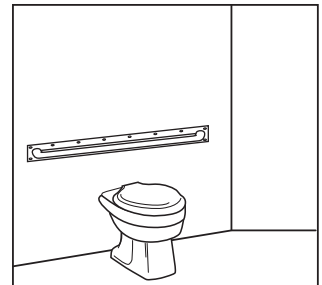
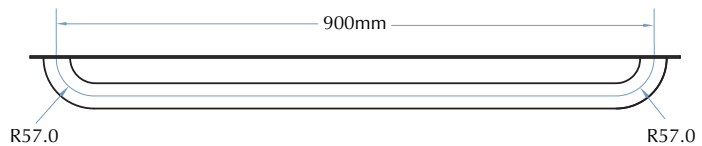
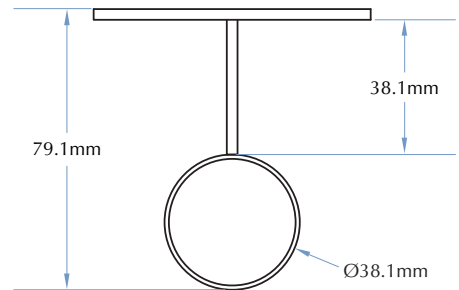
- Heavy duty satin finish stainless steel
- Ideal for prisons and mental health units

Overall Dimensions  
978.1mm W (900mm centres) x 78.1mm H x 79.1mm D  
Optional sizes as shown above.

Model SA72BP-001-24 Shown

## MODEL SA72BP-001-36

Options:  
SA72BP-001-60: 1500mm centres  
SA72BP-001-48: 1200mm centres  
SA72BP-001-42: 1067mm centres  
SA72BP-001-24: 600mm centres  
SA72BP-001-12: 300mm centres



### CONSTRUCTION:

**UNITS:** All welds are ground smooth, with polished corners and burr-free edges.

**TUBES:** 38mm diameter - fabricated of type 304 (18-8), heavy gauge stainless steel in architectural satin finish.

**BACK PLATES:** 3mm thick - fabricated of type 304 (18-8), heavy gauge stainless steel in architectural satin finish.

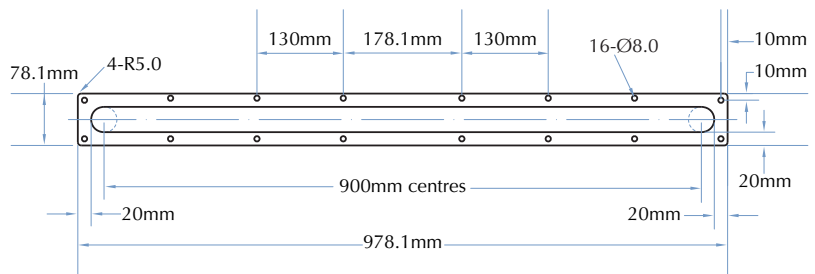
**CLOSURE/INFILL PLATE:** Fabricated of type 304 (18-8), 11 gauge stainless steel and located in the middle of the rail.

### INSTALLATION:

Secure to wall with torx-head screws (not included) at holes provided.

### GUIDE SPECIFICATION:

Horizontal Anti-Ligature grab bars shall be fabricated of type 304 (18-8), heavy gauge stainless steel with exposed surfaces in satin finish stainless steel.



TOLL FREE 1300 364 561

The manufacturer reserves the right to make changes in design and material without formal notice and without incurring obligation.

**Bradley**  
AUSTRALIA.COM