

# EUROMATIC

KITCHEN AND HOUSEHOLD



## Curved Metal Panel Heater

### INSTRUCTION MANUAL

MODEL: NDH-24D

AFTER SALES SUPPORT  
(AU) 1300 886 649 (NZ) 0800 836 761



N13275

# Contents

---

Important Safety Instructions	3
Product Overview	6
Getting Started	8
Operating Instructions	12
Other Useful Information	14

# Important Safety Instructions

---

**Read this manual thoroughly before first use**, even if you are familiar with this type of product. The safety precautions enclosed herein reduce the risk of fire, electric shock and injury when correctly adhered to. Make sure you understand all instructions and warnings. **Keep the manual in a safe place for future reference**, along with any warranty information, your purchase receipt and the original carton. If you sell or transfer ownership of this product, pass on these instructions to the new owner.

**Always follow basic safety precautions and accident prevention measures when using an electrical appliance, including the following:**

## Electrical safety and cord handling

- **Voltage:** Before plugging in the heater, make sure your outlet voltage and frequency correspond to the voltage stated on the appliance rating label.
- **Electrical circuit:** To prevent overloading a circuit, do not plug the heater into a circuit that already has other appliances working.
- **No adaptor, no extension cord:** Do not use the heater with a power board or double adaptor as this may overheat and create a fire risk. Do not use it with an extension cord because the cord may overheat and cause a risk of fire.
- **WARNING: To reduce the risk of fire, electric shock or injury:**
  - Never touch the heater with wet or damp hands or feet.
  - Do not use the heater if any part of it has become wet. Immediately call a qualified service technician to inspect the heater and replace any part of the electrical system that has been wet.
  - Never spill liquid into the heater; never immerse the cord, plug or any part of the appliance in water or any other liquid.
- **Damaged cord:** If the supply cord is damaged, it must be replaced by the manufacturer or an authorised service agent in order to avoid a hazard. Contact the after sales support line for advice.
- **Damaged heater:** Do not operate the heater with a damaged cord or plug, or after the heater malfunctions or has been dropped or damaged. Contact our after sales support line to arrange an examination and/or repair.
- **Plug:** It is normal for the plug to feel warm to the touch; however, a loose fit between the AC outlet and plug may cause overheating and distortion of the plug. Contact a qualified electrician to replace a loose or worn outlet.
- **Protect the power cord:**
  - Do not twist or kink the cord or let it touch heated surfaces.
  - Do not put any stress on the cord where it connects to the product.
  - Arrange the cord away from any traffic area so no one will trip over it.
  - Do not run the cord under carpeting; do not cover it with rugs, runners etc.
  - Only operate the heater with the power cord fully unwound. Using it with the cord coiled up could cause overheating and present a hazard.

## After Sales Support

☎ (AU) 1300 886 649 (NZ) 0800 836 761 | ✉ [info@tempo.org](mailto:info@tempo.org)

# Important Safety Instructions (Cont.)

---

- **After use:** Always disconnect power when the heater is not in use and before cleaning, servicing or moving the heater.
- **Disconnect:** To disconnect the heater, switch it off and remove the plug from outlet. When disconnecting, grip the plug, do not pull on the cord.
- **Safety switch:** Unless your home is already fitted with a residual current device (safety switch), we recommend installing an RCD with a rated residual operating current not exceeding 30mA to provide additional safety protection when using electrical appliances. See your electrician for professional advice.

## Usage conditions and restrictions

- **Domestic use only:** This appliance is intended for indoor household use only. It is not suitable for commercial or industrial use. Only use this heater mounted securely to a suitable wall, or with the castor wheels securely attached.
- **Space heating only:** Do not use this appliance for anything other than its intended purpose, and only use it as described in this manual. Any other use is not recommended and may cause fire, electric shock or injury.
- **Protect from moisture:** This appliance is not intended for use in bathrooms, laundry areas and similar indoor locations. Never locate this appliance where it may fall into a bathtub or otherwise become exposed to water.
- **No outdoor use:** Do not use this appliance outdoors or on wet surfaces.
- **No clothes drying:** Do not use this appliance as a drying rack for clothing. Do not hang Christmas stockings or decorations on or near it.
- **Accessories:** The use of accessory attachments not recommended by the appliance distributor may result in fire, electric shock or personal injury.
- **Ventilation:** Only use this heater in a well ventilated area. To prevent a possible fire, do not block the space between the heater and the wall. This space is required for air intake or exhaust.
- **Keep openings clear:** To prevent a possible fire, do not insert or allow objects to enter any ventilation or exhaust openings. Do not block air intakes or exhaust openings in any manner.
- **WARNING! Damaged glass panel:** Do not use the heater if the glass panel is damaged.
- **WARNING: Protect from water:** Do not use this heater in the immediate surroundings of a bath, shower or swimming pool.



### **DANGER! Do not cover!**

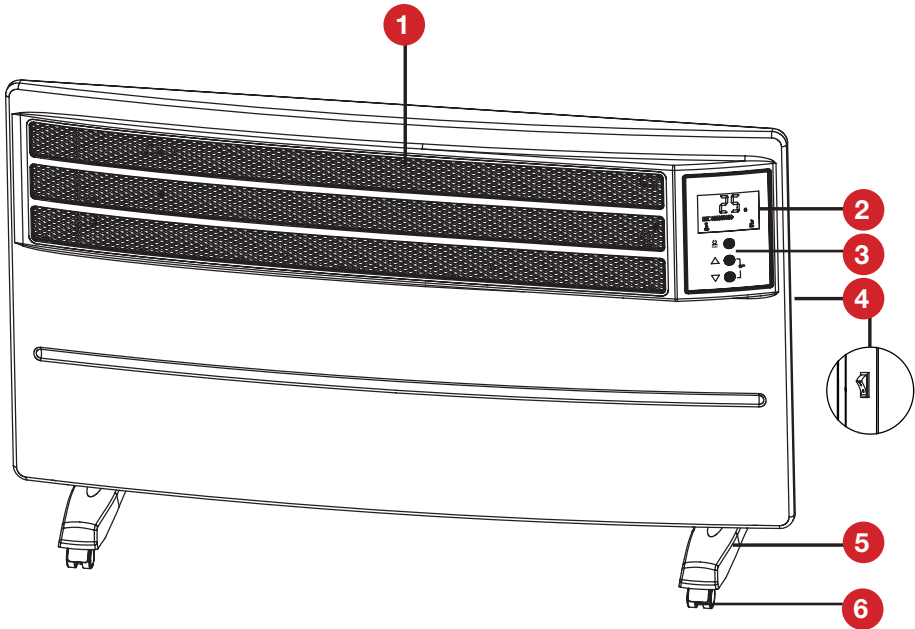
Do not cover the heater in any manner as it may overheat and become a fire risk.

# Important Safety Instructions (Cont.)

---

- **WARNING: Varying heat output!** The output of this heater may vary and its temperature may become intense enough to burn exposed skin. Use of this heater is not recommended for persons with reduced sensitivity to heat or an inability to react in order to avoid burns.
- **WARNING: No external timer!** Never operate the heater on a program switch, external timer switch or any other appliance for automatic operation, as there is a risk of fire if the heater is covered or positioned incorrectly.
- **Usage restriction:** This appliance is not intended for use by persons (including children) with reduced physical, sensory or mental capabilities, or lack of experience and knowledge, unless they have been given supervision or instruction concerning use of the appliance by a person responsible for their safety.
- **Children:** This product is not a toy. Children should be supervised to ensure that they do not play with the appliance.
- **CAUTION: Hot!** This heater is hot when in use. To avoid burns, do not let bare skin touch hot surfaces.
- **To ensure personal safety, do NOT install this heater:**
  - In front of or immediately below a power point.
  - Near flammable materials or surfaces (such as furniture, curtains, pillows, bedding, papers, clothes). Keep such materials at least 0.9m away from the front of the heater and keep them away from the sides and rear.
  - In any areas where petrol, paint or other flammable liquids are stored, such as in a garage or workshop, as the heater has hot and arcing parts inside which may spark.
- **If wall-mounting the heater,** only mount it to an appropriate, sturdy wall that can support the weight of the heater. **Do not mount this heater on the ceiling!**
- **Service:** This heater contains no user-serviceable parts inside. Do not attempt to open and repair the heater yourself. Other components should only be serviced by a qualified technician.
- **Malfunction:** In case of malfunction, disconnect the plug immediately and contact our after sales support line for advice.
- **Storage:** To avoid damaging the heater during storage or transport, keep the heater in a dry place, free from excessive vibration.
- **Improper use:** Improper use or installation may result in the risk of fire, electric shock and/or injury. We assume no liability for any eventual damages caused by improper use or incorrect handling.

# Product Overview



## Scope of delivery

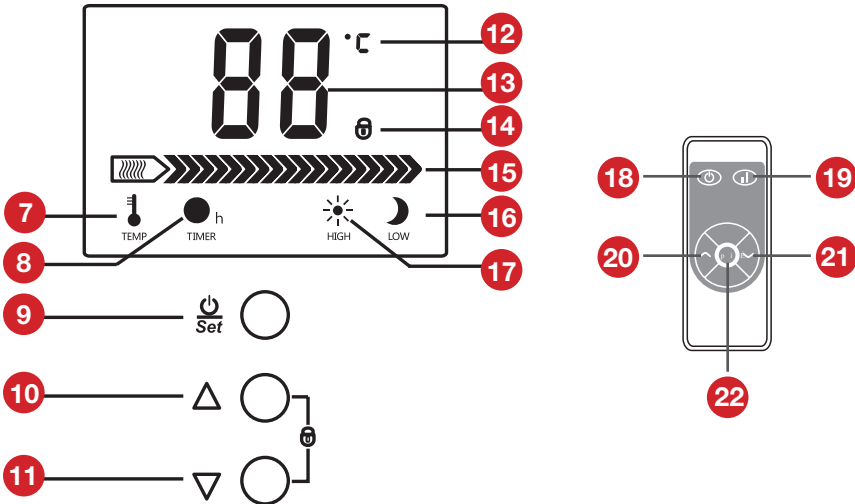
### Parts of the heater

- 1 Air Outlet
- 2 Display
- 3 Control panel
- 4 Power switch
- 5 Castor wheel assemblies (one for each side)
- 6 Castor wheels (two on each assembly)

### NOTE:

Due to continued product improvement, images and illustrations in this manual may vary slightly from the product purchased. All images in this manual are for reference purposes only. Parts are not necessarily pictured to scale.

# Product Overview (Cont.)



## Control panel and display

- 7 Temperature (°C) indicator
- 8 Timer indicator
- 9 Power & setting (SET) button
- 10 UP button
- 11 DOWN button
- 12 Temperature scale indicator
- 13 Temperature display
- 14 Child lock indicator
- 15 Heating element working indicator
- 16 Low heat indicator
- 17 High heat indicator

## Remote Control

- 18 POWER button
- 19 LOW/HIGH heat selector
- 20 UP button
- 21 DOWN button
- 22 SET button

## Wall-mounting kit (not pictured)

- 3 x Brackets \*
- 2 x \*ST5.0×35mm Screws
- 2 x ø8 Anchoring

**NOTE:** In order to ensure safe transportation, the heater comes with the bracket assembled at the back by the factory. The screws and anchoring are packaged in a plastic bag together with the instruction manual.

## After Sales Support

☎ (AU) 1300 886 649 (NZ) 0800 836 761 | ✉ info@tempo.org

# Getting Started

---

## Unpacking

- **Packaging:** This product has been packaged to protect it against transportation damage. Unpack the appliance and keep the original packaging carton and materials in a safe place. It will help prevent any damage if the product needs to be transported in the future, and you can use it to store the appliance when it is not in use. In the event the carton is to be disposed of, please recycle all packaging materials where possible. Plastic wrapping can be a suffocation hazard for babies and young children, so ensure all packaging materials are out of their reach and disposed of safely.
- **Cord:** Inspect the power supply cord and plug, and all other parts of the appliance, for visual damage. Do not use the appliance if anything appears to be damaged or not working properly. **In case of damage, contact our after sales support centre using the details at the bottom of the page.**
- **Documentation:** Make sure you have read and understood all instructions and warnings in this manual. Refer to the Product Overview, on pages 6–7, to familiarise yourself with the product and identify all parts. Pay particular attention to the safety instructions on the previous pages.
- **Remote control:** The heater comes with a remote control, which is powered by a 3V lithium button cell (CR2032L). Before operation, please remove the plastic tab so the battery contacts are activated. Simply pull to remove.



DANGER if swallowed

### WARNING!

Keep batteries out of reach of children. Swallowing may lead to serious injury or death in as little as 2 hours due to internal burns.

**If swallowed, go straight to a hospital emergency room.**

Dispose of used batteries immediately.



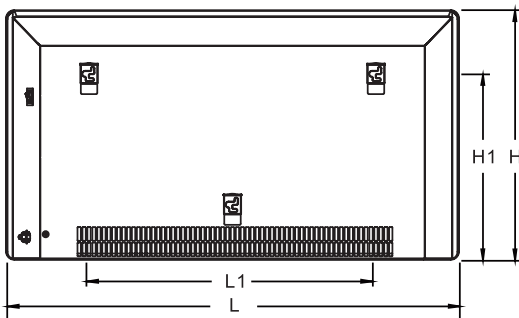
# Getting Started (Cont.)

## Wall-mounting

Your Panel Heater can be mounted onto a wall, if you choose to, or assembled onto the castor wheel assemblies. If wall-mounting the heater, please use the mounting instructions below and on the following pages as a guide, or consult qualified personnel, if required.

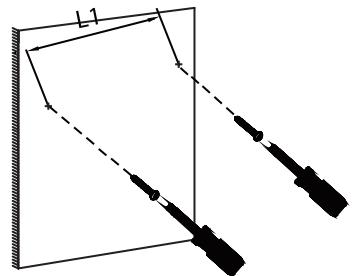
### IMPORTANT!

- **Only mount this heater on a structurally sound, heat-resistant wall** area that is strong enough to hold the weight of the heater. If in doubt, consult a builder. **Do not mount this heater on the ceiling!**
- The instructions below are for wall-mounting the panel heater onto a masonry wall. Please obtain expert advice if you intend to wall-mount the appliance onto a plasterboard wall.
- Make sure to maintain the following minimum clearances when wall-mounting the heater: 10cm above the floor and 1m below the ceiling.
- Make sure the heater is unplugged from the power supply before installation.
- Install the heater so that the controls cannot be touched by a person using a bath or shower.



### Mounting Specification

L mm	H mm	L1 mm	H1 mm
825	455	522	348

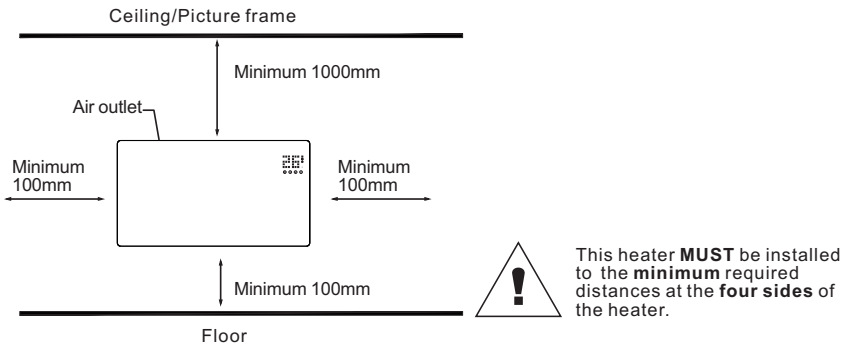
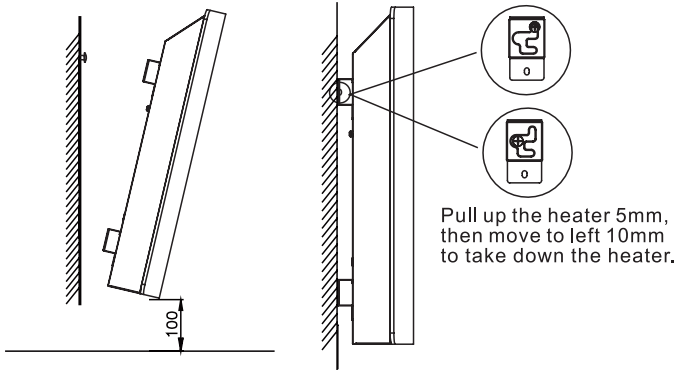


- First unscrew the heater from the top of the brackets and take down the bracket from the heater. Then use the bracket as a template to mark up where you want to install the heater on your wall.
- Affix the bracket to the wall, leaving a 522mm space between the screws.
- Then affix the heater onto the wall, aligning the screws onto the hooks on the back of the heater. Then push the heater down 10mm to secure into place.

### After Sales Support

# Getting Started (Cont.)

- **NOTE:** Leave a clear space of at least 10cm above the floor and 1m below the ceiling when wall-mounting the heater.
- To take down the heater from the wall, pull the heater upwards about 10mm, then gently pull the heater away from the mounting screws and remove from the wall.

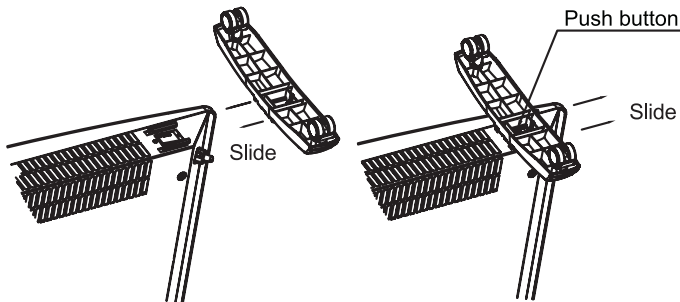


# Getting Started (Cont.)

## Castor wheel assembly

If you want to use your Panel Heater freestanding, follow the instructions below for the castor wheel assembly.

- Place a soft towel on the floor and carefully place your panel heater upside down. Be gentle so you won't damage the heater.
- Slide one castor wheel assembly onto the bottom of the panel heater at each side, until they click securely into place (as shown below).
- To remove a castor wheel assembly, push on the release button in the centre of the wheel assembly, then slide the wheel assembly to remove (as shown below).



### **WARNING!**

Do not connect the heater to the power supply until it is securely mounted to the wall or until the castor wheels are securely fitted.  
Correct installation is required for safe and reliable operation.

# Operating Instructions


---

## Using the heater

Before switching on the heater for the first time, check it again to be sure it did not get damaged during wall-mounting or castor wheel assembly.

- **Connection:** Make sure the On/Off switch is in the OFF position, then plug the heater into an appropriate power point and switch on power to the outlet. Always use a separate socket that has no other high wattage appliances connected at the same time – do not plug it into a power board or socket adaptor; do not use an extension cord.
- **Switch on:** Once the plug is securely inserted, switch the unit on at the side of the panel, the unit will emit a short beep and the indicator will light up, then press the Setting (SET) button (on the control panel or remote control) to turn on the heater. The room temperature will be displayed and the temperature light will come on (the factory-set default temperature is 25°C).

When turning your heater on for the first time it is normal for the heater to emit a 'new heater' smell, which will quickly pass. This is no cause for concern. Ensure good ventilation.

- **Temperature setting:** Press the SET button again to set the temperature. On the LED display, [ 88 ] [  ] will flash, prompting you to set the temperature. Use the UP or DOWN buttons to increase or decrease the temperature in one degree steps. The temperature can be set from 5°C to 36°C. If there is no operation within 5 seconds, the heater will return to the running state and display the room temperature.
- **Timer setting:** Press the SET button again to set the timer. On the LED display, the setting time will be displayed (in hours) and the timer indicator will flash, prompting you to set the timer. Use the UP or DOWN button to increase or reduce the time by 1 hour. The timer range is 0–24 hours. The factory-set timer is 0 hours. With indicator light on, the system starts to time according to the last setting time if there is no operation for 5 seconds. Each time you press the UP or DOWN button to set the timer, the system restarts the timer, or it reverts to the default setting until timer setting is completed, it then turns off and stops working. At the end of the set time, the heater will turn off.

# Operating Instructions (Cont.)

---

- **Heat (output power) selection:** Press the LOW/HIGH Heat Selector button on the remote control to select the output power. The heater will work with the full rated output when the high heat ☀ indicator is displayed, and with reduced output when the low 🌙 heat indicator is selected.
- Alternatively, press the UP button on the control panel to activate the full rated output, or the DOWN button to select low output power.
- **Child safety lock:** While the heater is working, press and hold both the UP and DOWN buttons at the same time for 3 seconds to lock the system. The LED will display a square [ 8 ] symbol for 3 seconds and then resume the normal temperature display. If any button is pressed now, the square [ 8 ] symbol will appear for 3 seconds before the normal temperature is displayed again.

**To unlock the child safety lock,** press and hold the UP and DOWN button at the same time for 3 seconds, or switch off power to the heater.
- **Turning off:** Press and hold the POWER/SET button for 5 seconds to turn off the heater.

## Safety features

The unit is equipped with a **overheat protection device** which will shut off the heater automatically if it is in an overheating condition. The heater will automatically turn back on when it has cooled down. The unit also has a tip-over safety switch, which will turn off the heater if it is knocked over.

# Other Useful Information

---

## CAUTION!

Always switch off and disconnect the appliance from the power supply before attempting any maintenance or cleaning the heater.

## Troubleshooting

If your heater fails to operate, or you experience any other problem with the appliance, contact our after sales line for advice or to arrange a service. But before phoning for a service, please ensure that your heater is properly plugged in and that the outlet is working and the circuit breaker or fuse are also working properly.

## Cleaning and maintenance

The heater requires regular cleaning to ensure trouble-free operation.

- Before cleaning your heater, switch off the heater and allow it to cool. Disconnect the electricity supply to the appliance.
- Use a damp cloth (not wet) to wipe the exterior of the heater to remove dust and dirt. Allow some time for the heater to dry thoroughly before reconnecting it to the power supply. **Do not use abrasive cleaning powders or furniture polish, as this can damage the surface finish. Do not immerse the cord, plug or heater in water or other liquid for cleaning.**
- Use a vacuum cleaner to remove dust and fluff from around the grilles.
- To clean behind the heater, hold the heater by the sides and gently pull it up and then towards you. Clean behind the heater and then reattach is securely on the mounting bracket.

## Storage

- If you are not going to use the heater for an extended periods of time, please unplug it at the power point. We recommend that you clean the heater and then store it (preferably in its original packaging) in a cool, dry place, out of children's reach.
- For long term storage, you can dismantle it from the wall or cover it with some material to protect it from dust.

## Servicing

If your heater requires servicing, please contact our after sales support centre using the details at the bottom of the page.

**CAUTION!** Do not attempt to open the heater and repair it yourself. Any repairs must be carried out by a qualified technician.

# Other Useful Information (Cont.)

## Battery replacement

The remote control comes with a CR2032 3V lithium button cell. If the battery needs to be replaced, pull out the battery holder at the bottom of the remote control, following the illustration on the remote control. Insert a fresh battery of the same type and size, as indicated on the diagram, then push the holder with the battery back into the unit.



DANGER if swallowed

### WARNING!

**Keep batteries out of reach of children. Swallowing may lead to serious injury or death in as little as 2 hours due to internal burns. If swallowed, go straight to a hospital emergency room. Dispose of used batteries immediately.**

**WARNING: Danger of explosion!** To prevent a risk of explosion, batteries must not be charged, heated or disposed of by burning. Never throw batteries into a fire or subject them to high temperatures.

**WARNING: Avoid contact with battery acid!** If battery acid has leaked, avoid contact with skin, eyes and mucous membranes to prevent injury. In the event of contact with the acid, rinse the affected areas immediately with plenty of clean water and contact a doctor at once.

**CAUTION: Avoid damage to the appliance!** To avoid damaging the appliance and ensure it functions correctly, make sure to insert the battery correctly according to the polarity marking. Only use fresh batteries of the required size and type. Do not open batteries or short-circuit them. Do not mix old and new, or different types of battery.

## Technical specifications

Model No	NDH-24D
Rated Power	2400W / 1200W
Rated Voltage	220-240V ~ 50-60Hz IP24
Dimensions (mm)	825 (W) x 455 (H) x 115(D)mm

## Responsible disposal

At the end of its working life, do not throw this appliance out with your household rubbish. Electrical and electronic products contain substances that can have a detrimental effect on the environment and human health if disposed of inappropriately. Observe any local regulations regarding the disposal of electrical consumer goods and dispose of it appropriately for recycling. Contact your local authorities for advice on recycling facilities in your area.

### After Sales Support

☎ (AU) 1300 886 649 (NZ) 0800 836 761 | ✉ [info@tempo.org](mailto:info@tempo.org)

## **Warranty returns**

Should you for any reason need to return this product for a warranty claim, make sure to include all accessories with the product.

## **Product does not work?**

If you encounter problems with this product, or if it fails to perform to your expectations, make sure to contact our After Sales Support Centre on (AU) 1300 886 649 or (NZ) 0800 836 761 before returning it to the store for a refund.

*Distributed by Tempo (Aust) Pty Ltd ABN 70 106 100 252*

*PO BOX 6056 Frenchs Forest, Australia NSW 2086*

*Customer Helpline:*

*(AU) 1300 886 649 (NZ) 0800 836 761*

*Email: [info@tempo.org](mailto:info@tempo.org)*

*V1.0*

### **After Sales Support**

**☎ (AU) 1300 886 649 (NZ) 0800 836 761 | ✉ [info@tempo.org](mailto:info@tempo.org)**