

PUSH
Outside

PULL
Inside



SHS-P717

New Concept in Door Locks

PUSH PULL

SERIES



Easy Way to Open Door

- Easy access using push-pull handle
- Both push-pull/pull-push available



Secured Lock-up

- Robust structural-design
- Anti-hacking encryption protocol



Smart Functions

- Automatic wake-up on approaching
- Locking notification on touch panel



Innovative Technology

- 14 patents pending
- Unprecedented design with modern style

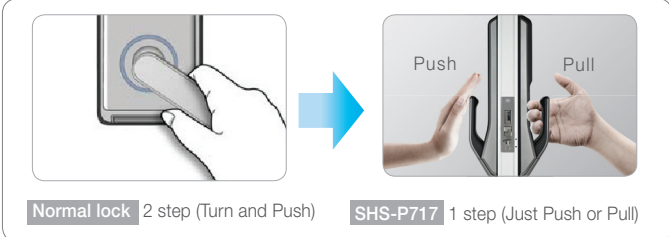
Door Lock's **PUSH PULL**

Push Pull's **SAMSUNG**

Easy way to open door

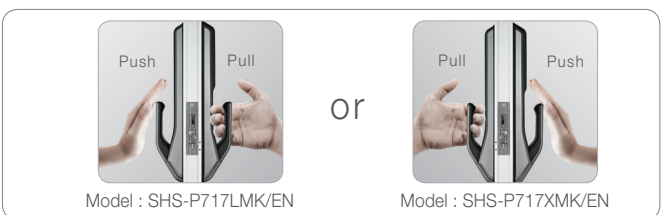
Don't turn. Just push it!

A new concept of push and pull design makes it convenient to use. Easy single-motion to open door. (Push a handle from the outside and pull it from the inside of the house.)



Both push-pull and pull-push type available

Depending on the direction of the door installed in the residence, customer can choose from either push-pull type or pull-push type on purchase.



Smart Functions



Automatic wake-up on approaching

IR sensor detects motion within 70 cm and wakes up the lock automatically



Locking notification on touch panel

It notifies the status of the door on touch panel ('Locked', 'Unlocked')



Warning alarm for possible intruder

It alarms when a motion keeps being sensed longer than a certain time period (one minute) warning alarm

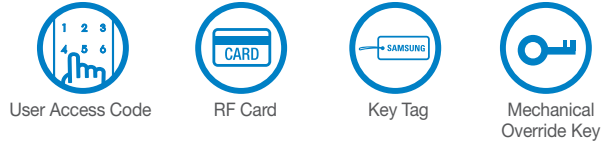


Manner Mode

It allows you to make a quite entrance at late night. (Push * button and user access codes)

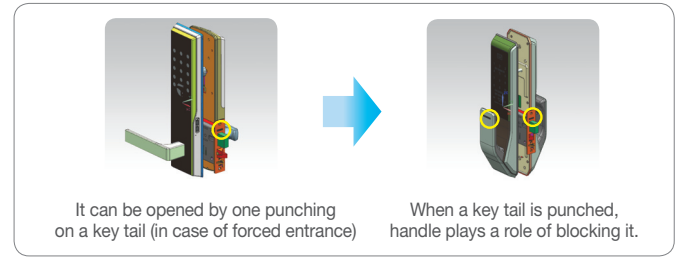
Secured Lock-up!

Various ways to open door make easy and safe entrance



Safe and robust design

Integrated structure of handle and main body that prevents from forced entrance



Technology and Design



14 patents pending (push-pull)

3 international patents

Two-way latch mortise Softer feel of door open!

Verified by self-test of 300,000 runs



Superior design that has won 3 major design awards

Samsung Smart Door Lock products won 3 major design awards (German IF, Red Dot Design Award and US IDEA Design Award).

• Specification

| | |
|------------------|--|
| User access code | 4~12 digit number combination , capacity : 10 |
| RF ID | ISO 14443A type(13.56Mhz), capacity : 20 |
| Size (WxHxD) | Outer body : 85x346.5x61mm Inner body : 86x354.8x63mm |
| Door thickness | 38~80mm |
| Power | DC 6V (AA Alkaline Batteries)X8 |
| Battery Life | Approximately 12 months (Average - 10 times per day) |

