



2-IN-1 CORDLESS VACUUM



1·2·3...

USER GUIDE

DDST14V



2 Year Warranty



LET'S GO.™

WARNING

BASIC SAFETY PRECAUTIONS

- This vacuum cleaner is intended for household use only and NOT for commercial or industrial use.
- Only use the vacuum cleaner indoors and keep the area you're cleaning well lit.
- Keep fingers, hair and loose clothing from moving parts and openings whilst using the vacuum cleaner.
- This appliance is not intended for use by children and persons with reduced physical, sensory or mental capabilities or lack of experience and knowledge, unless they have been given supervision or instruction concerning use of the appliance in a safe way and understands the hazards involved.
- Only Dirt Devil recommended charger, tools and accessories should be used with this vacuum cleaner.
- The vacuum cleaner should not be used to absorb or vacuum up liquids.

DON'TS

- Don't charge the vacuum cleaner outdoors or leave the charger connected to the mains when not in use.
- Don't use this vacuum cleaner if it has been dropped, damaged, immersed in water or left outdoors.
- Don't handle the charger plug or use the vacuum cleaner with wet hands.
- Do not use this vacuum cleaner with a damaged cord or plug. If the supply cord is damaged call us on AU: 1300 361 505 / NZ: 0800 800 900 for your nearest Dirt Devil authorised service agent.
- Don't use the charger cord as a handle, pull the charger cord around corners or sharp edges or close a door over the charger cord. Don't unplug charger by pulling on the charger cord.
- Don't attempt to remove blockages with sharp objects as this may cause damage to your vacuum cleaner.
- Don't use the charger with incorrect voltage as this may result in damage or injury to the user. The correct voltage is listed on the ratings label.



WARNING



DON'TS CONTINUED...

- Don't vacuum up hot coals, cigarette butts, matches or smoking hot burning items or use in an area where there may be harmful fluids (chlorine, bleach, and ammonia drain cleaner).

DO'S

- Always make sure the filter and dirt container are fitted correctly before using your vacuum cleaner.
 - Always turn off and unplug the vacuum cleaner from the charger before carrying out any maintenance.
 - Turn off all controls on the vacuum cleaner before disconnecting or connecting the charger.
 - Take extra care when cleaning on the stairs.
 - Always protect the charger cord from heated surfaces or near open flames.
 - If charging the vacuum cleaner through an extension cord use only SAA approved 10amp extension cords. Non-approved cords may overheat. Care should be taken to arrange the cord so that the cord cannot be tripped over.
 - Always carry the vacuum cleaner/handheld by the correct carry handle.
 - Store your vacuum cleaner in a cool, dry area.
 - Before any user maintenance is undertaken, refer to the appropriate section in the user guide to understand necessary precautions required.
 - Always use the charger supplied with the vacuum cleaner.
 - Always remove the charger from the mains and charging port on the vacuum cleaner before using the vacuum cleaner or carrying out any maintenance or troubleshooting.
- PLEASE KEEP INSTRUCTIONS FOR FURTHER USE AND USE ONLY AS INSTRUCTED IN THIS GUIDE.**

TABLE OF CONTENTS



1·2·3...

Overview ————— 6

Quick Start Assembly ————— 7

How to ————— 8

Accessories ————— 17



Troubleshooting ————— 18

OVERVIEW

On/Off and suction control switch

**2-in-1 crevice tool/
dusting brush holder**

Handle recline button

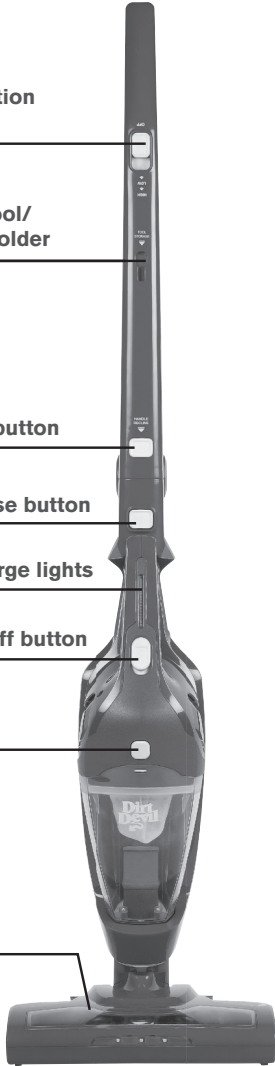
Handheld release button

LED Power/charge lights

Handheld On/Off button

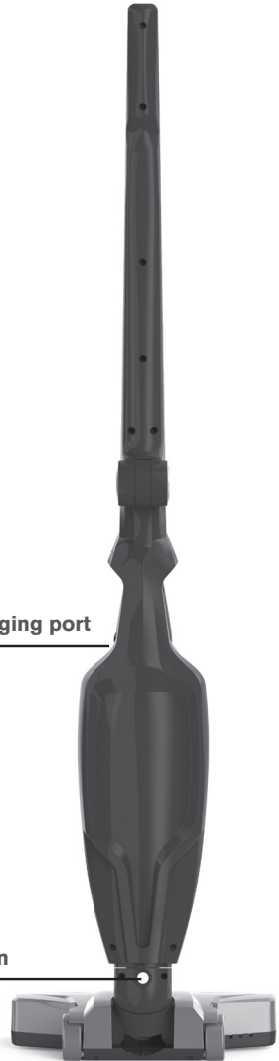
**Dirt container
release button**

Floorhead



Machine charging port

**Floorhead
release button**



TECHNICAL SPECIFICATIONS

Model number:	DDST14V	Charger Input:	100-240V ~ 50/60Hz	Dirt bin capacity:	0.4L
Voltage:	14.4V	Charger Output:	25V --- 0.5A	Charge time:	5 hours
Power:	115W	Battery:	Rechargeable Ni-MH	Run time:	Up to 25 minutes
				Weight:	3kg



Double Insulated



This product meets applicable regulatory requirements



Indoor Use







Read Instructions

We reserve the right to make changes to technical and design specifications in the interest of continuous product improvement. © Dirt Devil.

QUICK START

PLEASE READ 'BASIC SAFETY PRECAUTIONS' BEFORE USE

-  **CAUTION:** Always switch off the vacuum cleaner before connecting or disconnecting the handheld/attachments or removing and emptying the dirt container.
-  **CAUTION:** Ensure the battery is removed from the vacuum cleaner before it is scrapped. The vacuum cleaner must be disconnected from the supply mains when removing the battery. The battery must be recycled or disposed of in an environmentally sound manner.
-  **IMPORTANT:** The vacuum cleaner is equipped with a thermal cut-out. If for any reason the vacuum cleaner does overheat the thermostat will automatically turn the vacuum cleaner off. If this happens, switch the vacuum cleaner off. Remove and empty the dirt container also check the vacuum cleaner for blockages. Allow the vacuum cleaner to cool for approximately 1 hour (if you have cleaned the filter please wait 24 hours for the filter to fully dry before putting back into the machine). For best cleaning results, filters require cleaning at least every 3 to 6 months. If the vacuum cleaner is blocked, switch off before removing the blockage.
-  **CAUTION:** This vacuum cleaner has a constantly rotating brushbar. Never leave the vacuum cleaner in one spot for an extended period of time as this may damage the floor surface.

ASSEMBLE YOUR 2-IN-1 VACUUM CLEANER

1. Line up the floorhead with the main body and push firmly into place.
2. Lift the handle in a hinge like manner and secure onto the main body.



3. Store the 2-in-1 tool on board the vacuum cleaner by pushing the tool firmly into the tool holder located on the handle.
4. Fix the wall clip to your wall using the screw and wall plug provided. During storage and charging, secure your vacuum cleaner handle into the wall clip.



NOTE: To fold the handle for storage, push in the handle recline button and fold handle all the way back.

HOW TO

CARRY YOUR 2-IN-1 VACUUM CLEANER

1. Make sure the handle is secured in the upright position and use the handle to carry the 2-in-1 vacuum cleaner.
2. Use the handle to carry as a handheld vacuum cleaner.



CHARGE YOUR 2-IN-1 VACUUM CLEANER

NOTE: Initial charge is 5 hours, charging will be required before first use. The vacuum can be charged with the handheld either attached to or detached from the main body.

1. Plug the charger lead into the charging port located on the side of the handheld and then plug the charger into the mains.
2. Once fully charged the LED indicator lights on the handheld will illuminate green.
3. When the vacuum needs recharging the LED lights on the handheld will illuminate red and the machine will cut out.



CAUTION: To prolong battery life remove the vacuum from charge after 5 hours. Battery to be fully depleted prior to next charge.

HOW TO

⚠ CAUTION

The brushbar will constantly rotate. Never leave the vacuum cleaner in one spot for an extended period of time as this may damage the floor surface. Dirt Devil cannot be held responsible for damage to the floor surface if this recommendation is not followed.

USE AS AN UPRIGHT VACUUM CLEANER

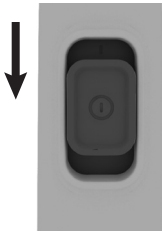
1. Unplug the charger from the mains and from the side of the handheld.



2. Place foot on the floorhead and pull the handle backwards to recline.



3. Slide the On/Off suction control switch forward once for low suction. The LED lights on the handheld will illuminate green, indicating the power is on and the brushbar will spin.



4. Slide the On/Off suction control switch forward again for high suction.



5. Slide the On/Off suction control switch all the way back to switch the power and LED lights Off.



⚠ **CAUTION:** Always unplug the charger from the mains and charging port on the vacuum cleaner before using or carrying out any maintenance of troubleshooting.

HOW TO



CAUTION

Always take extra care when cleaning stairs.
Always switch the handheld off before connecting or disconnecting the accessories and before returning the handheld to the main body.

USE AS A HANDHELD VACUUM CLEANER

1. Press the handheld release button.



2. Lift to remove the handheld from the main body.



3. Slide the On/Off suction control forward to switch the handheld on. The LED lights will illuminate green indicating the power is on.



HOW TO



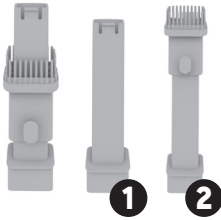
CAUTION

Always switch the vacuum cleaner off before removing any blockages.

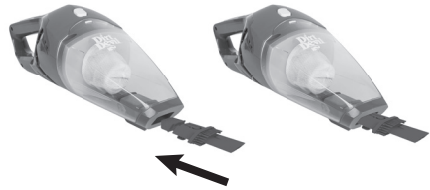
USE THE 2-IN-1 TOOL

1. The 2-in-1 converts into:

- ① = Crevice tool
- ② = Dusting brush



2. For a more detailed clean, line up the 2-in-1 tool with the nozzle on the handheld and push firmly into place.



3. Before returning the handheld to the main body, slide the On/Off suction control backwards, to switch the handheld off. Pull to remove 2-in-1 tool from the handheld nozzle.



HOW TO



CAUTION

Always switch off the vacuum cleaner before carrying out any maintenance or troubleshooting.

EMPTY THE DIRT CONTAINER

1. Press the handheld release button.



2. Lift to remove the handheld from the main body.



3. Press the dirt container release button.



4. Pull to separate the dirt container from the handheld.



5. Remove the filter from the dirt container by gently pulling the filter frame.



6. Hold the dirt container over a bin allowing dirt/debris to fall out.



HOW TO



CAUTION

For best cleaning results filters require cleaning every 4-6 uses or as needed depending upon use. Do not use your vacuum cleaner without the filter in place.

CLEAN THE FILTER

1. Press the dirt container release button.



2. Pull to separate the dirt container from the handheld.



3. Remove the filter from the dirt container by gently pulling the filter frame.



4. Tap the filter over a bin to remove any dirt/debris. Wash the filter under running water (40 degrees max).



5. Leave for 24hrs or until fully dry before replacing.



6. Refit the filter making sure the filter frame is correctly lined up in the dirt container.



HOW TO



CAUTION

For best performance all terminals must be free from dust and dirt.

CLEAN THE TERMINALS

1. Using a dry cloth or soft dusting brush remove any dust/debris from terminals on main body and handheld.



CLEAR BLOCKAGES

1. Press the handheld release button.

2. Lift to remove the handheld from the main body.



3. Press the floorhead release button.

4. Pull to remove the floorhead from the main body.



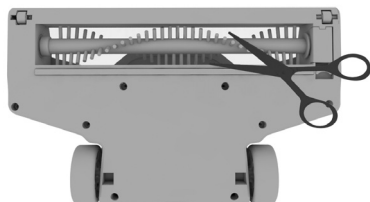
CAUTION: Use a blunt instrument such as a broom handle or something similar when removing a blockage from the main body or floorhead.


5. Remove any blockage from the main body or floorhead.



CLEAR A BLOCKAGE FROM THE BRUSHBAR

1. Using a pair of scissors remove any threads or hair caught around the brushbar.



 **CAUTION:** If the brushbar has been obstructed, the Motor Protection Sensor may have been activated. Remove the handheld and floorhead and clear any obstruction from the brushbar. Replace the handheld and floorhead, wait 30 minutes for the vacuum cleaner to reset itself and retry.

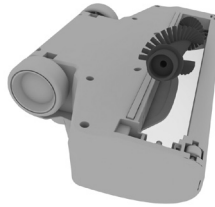
HOW TO

REPLACE THE BRUSHBAR

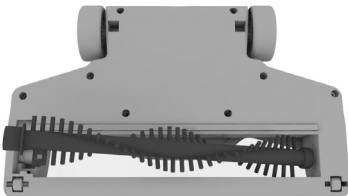
1. To release the brushbar pull and lift the release lock located underneath the floorhead.



2. Remove the brushbar lifting the side of the brushbar nearest the release lock first.



3. Replace the brushbar. Fit the inverted round end of the brushbar first, then line up and push the other side of brushbar into the floorhead. Refit the release lock.



ACCESSORIES

Pre-motor filter
Model: DDST14FLT



TROUBLESHOOTING

PROBLEM	POSSIBLE CAUSE	POSSIBLE SOLUTION
Why does my vacuum cleaner have no power?	The vacuum cleaner may need recharging.	Go to 'How to charge your 2-in-1 vacuum cleaner'.
	The handheld may not be correctly fitted into the main body.	Go to 'How to assemble your 2-in-1 vacuum cleaner'.
	The terminals may have gathered dust/debris.	Go to 'How to clean the terminals'.
	The brushbar has been obstructed.	If the brushbar has been obstructed, the Motor Protection Sensor may have been activated. Remove the handheld and floorhead and clear any obstruction from the brushbar. Replace the handheld and floorhead, wait 30 minutes for the vacuum cleaner to reset itself and retry.
Why isn't my vacuum cleaner charging?	The terminals may have gathered dust/debris.	Go to 'How to clean the terminals'.
	The charger cable may be damaged.	Check the charger cable for damage. If damaged please contact our Customer Service AU: 1300 361 505 NZ: 0800 800 900
Why won't the vacuum cleaner pick up?	The dirt container may be full or the filters may be clogged.	Go to 'How to empty the dirt container' or 'How to clean the filter'.
	There may be a blockage in the vacuum cleaner.	Go to 'How to clear blockages'.
	The brushbar may not be turning.	Go to 'How to clear a blockage from the brushbar'.
	The vacuum cleaner may need recharging.	Go to 'How to charge your 2-in-1 vacuum cleaner'.
	Low suction has been selected, increase to high suction.	Go to 'How to use as an upright vacuum cleaner'.
Why won't the brushbar turn?	The brushbar has been obstructed.	If the brushbar has been obstructed, the Motor Protection Sensor may have been activated. Remove the handheld and floorhead and clear any obstruction from the brushbar. Replace the handheld and floorhead, wait 30 minutes for the vacuum cleaner to reset itself and retry.
Why has the LED light turned red?	The vacuum cleaner needs recharging.	Go to 'How to charge your 2-in-1 vacuum cleaner'.



CAUTION: To reduce the risk of personal injury, unplug the charger from the mains and vacuum cleaner before carrying out any maintenance or troubleshooting checks.



Distributed by Techtronic Industries Australia Pty. Ltd.

31 Gilby Road, Mt Waverley

Victoria, 3149, Australia

www.dirtdevil.com.au

Service Line:

AU: 1300 361 505 / NZ: 0800 800 900

LET'S GO.