

## VIBRATORY PLATE COMPACTOR MODEL - CC90

### OPERATION & INSTRUCTION MANUAL

Thank you for your selection of CROMMELINS plate compactor.

This Operation Manual explains its use, installation, checking and maintenance.  
"CROMMELINS" suggests that you retain this manual for ready reference regarding  
proper handling of CROMMELINS plate compactor.



Industrial Engines & Powered Products

Perth • Sydney • Brisbane • Melbourne • Adelaide



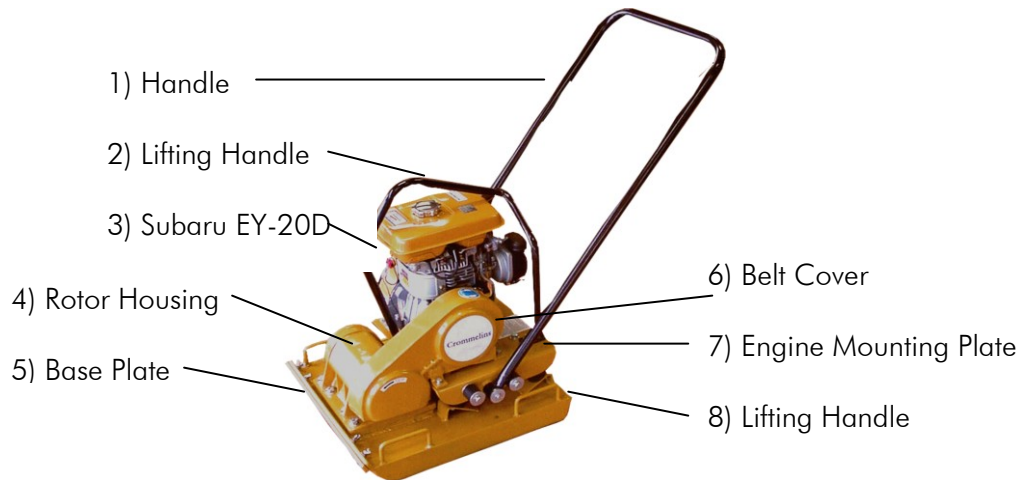
## 1. SAFETY PRECAUTION

THIS MANUAL CONTAINS IMPORTANT INFORMATION ON HOW TO USE THE VIBRATORY PLATE COMPACTOR, CC90 PROPERLY AND SAFELY. READ THROUGH THIS MANUAL BEFORE YOU ATTEMPT TO OPERATE THE MACHINE.

## 2. SPECIFICATIONS

MODEL	CC90
Base Plate Dimension L x W (mm)	550 x 505
Exciter Speed (rpm)	5000
Travel Speed (m/min)	Up to 25
Grade Ability (Deg)	Up to 23
Centrifugal Force (kN)	16.5
Min. Compaction Depth (cm)	25
Water Tank Capacity (litre)	-
Engine	EY20D
Engine Type	Air-cooled Gasoline
Max. Output (hp/rpm)	5/4000
Starting System	Recoil
Machine Weight (kg)	84

## 3. COMPONENTS



### Customer Identified Hazard(s)

#### Key Operating Instructions

Please refer to the User Guide and Operator's Manual for Operating Instructions

Use unleaded fuel only.

TO START turn on the fuel tap by moving lever to the down position.

Ensure the stop switch is in the ON position.

For cold starting close the choke lever.

Start the engine by pulling the recoil rope with the throttle in low speed position.

(This will prevent the clutch engaging until operation is ready to commence)

As the engine warms up return the choke lever to the open position.

To commence operation open the throttle to full speed.

Maintain control of the machine with both hands on the handle.

TO STOP the machine return the throttle to the low speed position, turn the stop switch to OFF and turn off the fuel tap.

The Safety Information on this assessment has been developed for the Hire and Rental Industry to assist in the safe operation of this equipment.

This information contains general information only and should not be relied upon as a substitute for professional advice, which the user should seek before operating.



**PLANT INFORMATION**

PSA Ref #: 00011  
 Model No: CC90  
 Plant Name: CROMMELINS PLATE COMPACTOR  
 Manufacturer: Crommelins Machinery WA  
 Manufacturer's Website: www.crommelins.com.au  
 Web Link for Plant: www.crommelins.com.au  
 Mandatory Personal Protective Equipment:



Foot Protection



Hearing Protection



Protective Clothing

**RISK ASSESSMENT INFORMATION**

Operator Competency: Plant Licence Not Required

Potential Hazard(s)	Risk Level	Control Measure(s)
Coming into contact with moving parts.	Low	• Belt guard fitted to plant. Do not remove guards or covers.
Coming into contact with hot parts of the engine.	Medium/Low	• The muffler is fitted with a heat shield. Let the engine cool down before attempting any maintenance.. Avoid contact with hot components. Warning label on engine.
Explosion or fire from fuel vapours.	Medium	• Stop the engine before refuelling. Do not refuel while hot. Avoid spillage of fuel when refuelling. Ensure the fuel cap is properly secured after refuelling. Carry out visual inspection for fuel leaks and repair before operation. Keep flammables away from the engine. Warning label on engine.
Inhaling exhaust or fuel fumes.	Medium/Low	• Only operate in a well ventilated area. Do not operate in a confined space. Avoid breathing petrol fumes. Avoid skin contact with petrol. Warning label on engine.
Manual handling hazard.	Medium/Low	• Handles are provided on the plant for the required multiple lift. A lifting frame is provided on the plant for a mechanical lift. Do not attempt a single person lift. Use correct lifting techniques.
Hearing damage from excessive noise.	Medium/Low	• Hearing protection with a rating of 20db must be worn. Warning label on plant.

**HINTS ON OPERATION**

- During uphill compaction, it may be necessary to swing the handle over and pull the machine slightly.
- When compacting on slopping terrain, the machine may tend to slide sideways. The operator must steer toward the rise causing the machine to travel at an angle.
- When operating the machine in wet or damp soil, it may occasionally be required to clean the bottom of the base plate. Mud accumulation on the base plate will slow the machine down and prevent efficient soil compaction.
- When operating this compactor on asphalt surface, it is recommended that light oil or kerosene be applied to the bottom of the base plate to prevent asphalt sticking and/or accumulation.
- Operating the machine on a fully compacted, hard, or non-yielding surface will damage bearing at the eccentric shafts, and will greatly reduce the life of the machine.

**STOPPING THE MACHINE**

- IN PREPARATION FOR STOPPING THE ENGINE, LET THE ENGINE RUN IN LOW SPEED POSITION.
- ALLOW THE ENGINE TO IDLE FOR 1-2 MINUTES.
- CLOSE THE FUEL SHUT-OFF VALVE.
- TURN THE ENGINE SWITCH TO "OFF".

**WARNING! BE CAREFUL NOT TO TOUCH HOT ENGINE PARTS AT THIS TIME.**

- AFTER THE ENGINE HAS COOLED, IT IS HIGHLY RECOMMENDED TO WIPE OFF THE MACHINE AND INSPECT OIL SEALS FOR ANY UNUSUAL LEAKAGE FROM THE ENGINE OR ECCENTRIC HOUSING. IT IS ALSO RECOMMENDED THAT THE COVER BE PLACED OVER THE MACHIINE AT THIS TIME TO PROVIDE PROTECTION TO THE MACHINE AS WELL AS THE ENGINE.

#### 4. TRANSPORTATION

- Before transportation, confirm that the fuel shut-off valve is closed.
- Be sure to let the engine cool off before transportation.
- When loading and unloading the machine to and from the vehicle, lift the machine with extreme care. The machine is heavy, and must not be lifted single-handedly. Four lifting handles are provided at each corner of the Base Plate. Lift the machine by two people holding each pair of the handles. Do not attempt to lift the machine by grabbing the Operation Handle.
- Tie the machine firmly to the vehicle during the transportation.

#### 5. STORAGE

- Make sure that the engine is completely cooled off before storage.
- Clean up oil and dust accumulation on rubber parts.
- Clean the base plate and wipe on a light coat of oil to prevent rust formation.
- Cover the machine and store it in a dry place.
- For long-term storage, remove fuel from the fuel tank. Also remove fuel remained in the fuel line and chamber of the carburettor. To drain fuel from the chamber of the carburettor, remove the Drain Plug provided at the chamber, and remove fuel.

#### 7. TROUBLESHOOTING

TROUBLE	POSSIBLE CAUSES	COUNTERMEASURE
Engine won't start, or stops suddenly.	No fuel.	Supply the fuel.
	Engine Switch being set to "OFF".	Clean the Engine Switch to "ON".
	Spark Plug being carbonized.	Clean the Spark Plug, or replace it with new one.
	Fuel Strainer being clogged.	Clean the Fuel Strainer.
	Carburettor being clogged.	Dismantle, and clean the carburettor.
Engine runs, but the machine does not produce any vibration.	Air Cleaner Element clogged.	Dismantle the cleaner element, and clean the element with proper solvent. (see the engine manual)
	Lack of Engine Power.	Refer to the Engine Manual.
	Centrifugal Clutch is slipping.	Dismantle the clutch assembly, and clean the Shoe and drum with proper solvent.
	Improper V-Belt Tension, or excessive wear or V-Belt.	Adjust the tension, or replace the belt with new one.
Slow or Irregular Vibration	Centrifugal Clutch is slipping.	Dismantle the clutch assembly, and clean the Shoe and Drum with proper solvent.
	Improper V-Belt tension, or excessive wear of V-Belt.	Adjust the V-Belt tension, or replace the belt with new one.

**Maintenance: Every 50 hours or weekly**

- Check the belt tension by pressing the belts midway between pulleys. The belt should deflect by 10 to 15mm.
- How to adjust the belt tension:  
Loosen the bolts, which fix the engine with the engine base.  
Adjust the belt tension by re-tensioning the belt adjuster bolts.  
Once proper belt tension is achieved, tighten the bolts.
- When the belt tension cannot be adjusted using the above method, the belt may have been stretched and worn out. Replace the V-Belt. Replace both of two simultaneously.

**Maintenance: Every 450 – 500 hours**

**FUEL & LUBRICANT**

FUEL	AUTOMOTIVE GASOLINE
ENGINE OIL	Motor Oil of proper viscosity for 4 stroke gasoline engine

CAPACITY			
ENGINE	Fuel Tank	Engine Oil	Belt Size
EY-20D	3.8 Litres	600cc	A-29

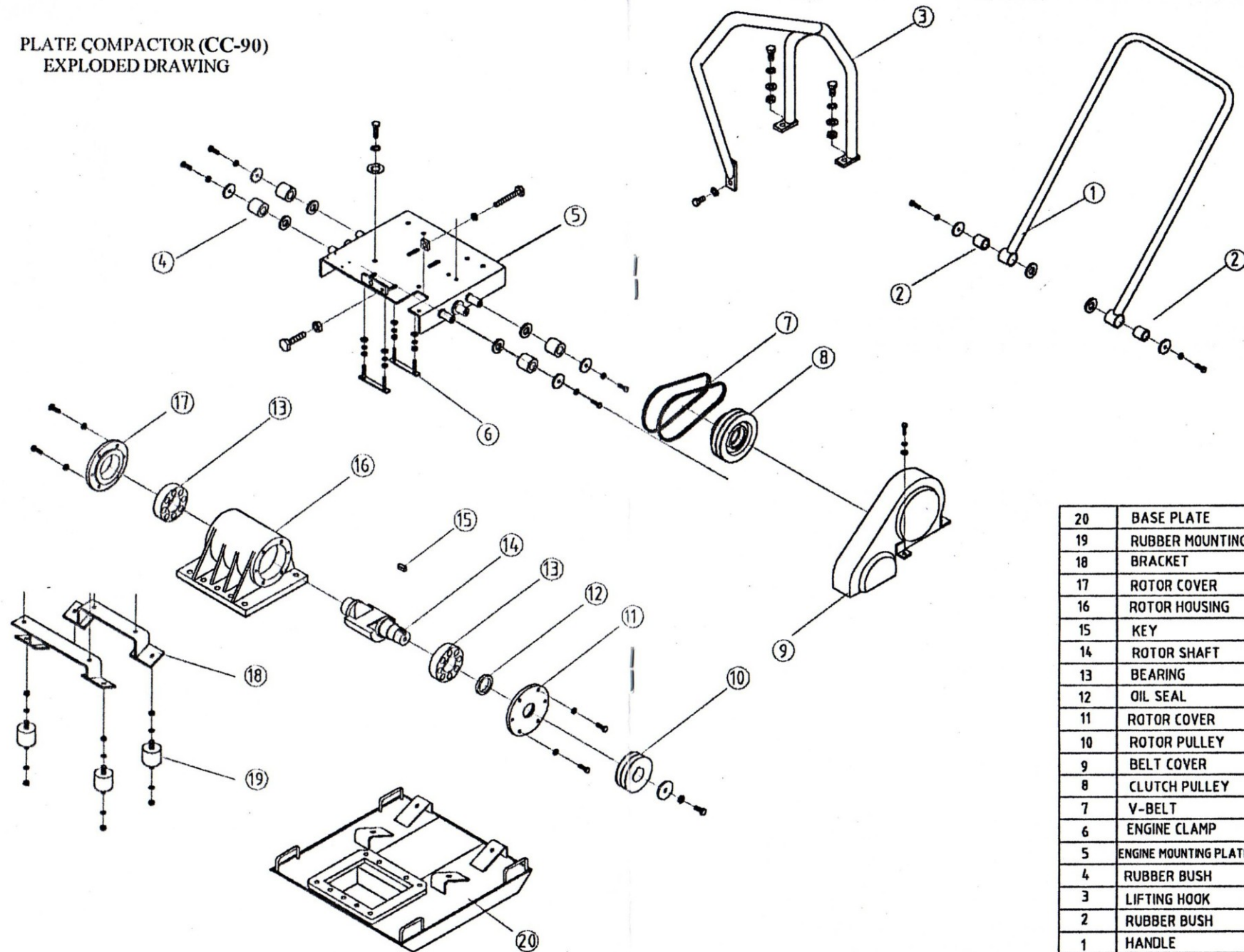
**6. MAINTENANCE**

When assembling, lubricating, or adjusting any part of the machine, make sure to stop the engine and disconnect the spark plug wire. Service the engine according to the engine manufacturer’s specifications. Refer to the engine operation and maintenance manual.

**Maintenance: Every 8 hours or daily**

- Check for loose bolts and nuts, retighten if necessary.
- Check and clean the air filter element, re-lube the element according to engine manufacturer’s recommendations. If operating conditions are usually dusty and severe, filter elements cleaning should be done more frequently.
- Check oil level in crankcase and replenish as necessary. Recommended engine oil is SAE 10W-30.

PLATE COMPACTOR (CC-90)  
EXPLODED DRAWING



20	BASE PLATE	
19	RUBBER MOUNTING.	
18	BRACKET	
17	ROTOR COVER	
16	ROTOR HOUSING	
15	KEY	
14	ROTOR SHAFT	
13	BEARING	6309 ZZ C3
12	OIL SEAL	40/55/8
11	ROTOR COVER	
10	ROTOR PULLEY	
9	BELT COVER	
8	CLUTCH PULLEY	
7	V-BELT	A31
6	ENGINE CLAMP	
5	ENGINE MOUNTING PLATE	
4	RUBBER BUSH	
3	LIFTING HOOK	
2	RUBBER BUSH	
1	HANDLE	
REF.NO	DESCRIPTION	SIZE