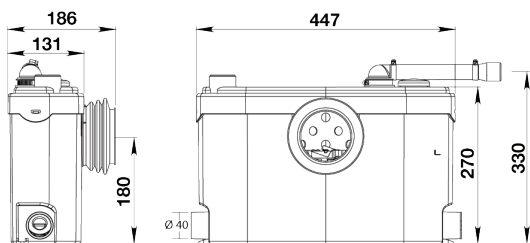
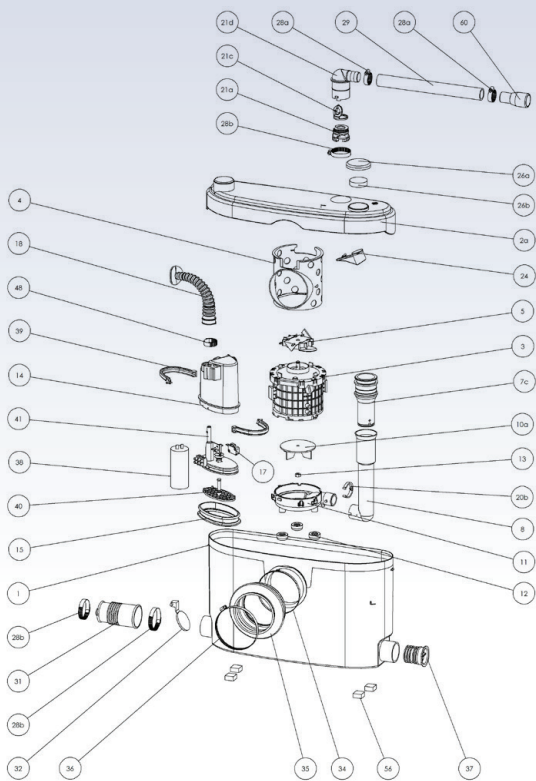
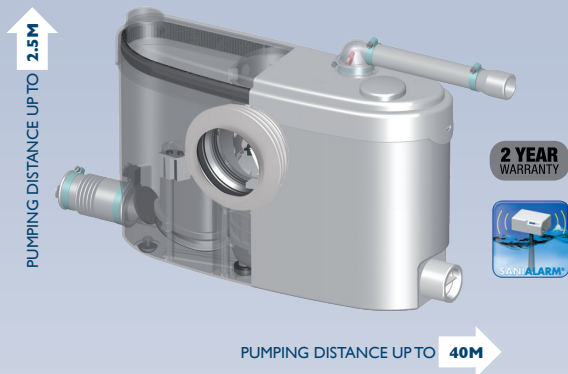


SANISLIM

SA 90

SANISLIM is designed to fit slimline sanitary ware. It will take waste water from a toilet, hand basin and shower and pump up to a height of 2.5 metres.



*Image shown with exposed pipes for illustrative purposes only.

POSSIBLE CONNECTIONS

WC, vanity basin, shower

VERTICAL PUMPING HEIGHT

Up to 2.5m

HORIZONTAL PUMPING DISTANCE

Up to 40m (refer to pumping graph below)

RECOMMENDED DISCHARGE PIPE DIAMETER

20mm uPVC Pressure Pipe

NORMAL OPERATING TEMPERATURE

35°C

ELECTRICAL POWER SUPPLY

220-240V / 50Hz

MOTOR POWER RATING

400W

OVERALL MEASUREMENTS (W x H x D)

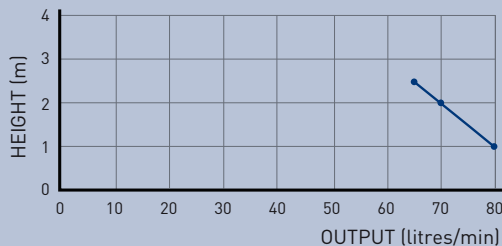
447 x 270 x 131mm

ACCESSORIES

- Factory pre mounted non return valve (supplied)
- Can be equipped with SaniAlarm (sold separately) (Isolation valve not supplied)

All horizontal pipework requires a minimum of 1:100 fall

FLOW RATE PERFORMANCE



PUMPING DISTANCE PERFORMANCE

Increase size of horizontal run by one pipe size after 5m

