

HOZELOCK
Auto Reel
20m, 25m & 30m

2401
2402
2403

Hozelock Ltd.
Midpoint Park, Birmingham,
B76 1AB, England
+44 (0) 121 313 1122
www.hozelock.com
33364-001

Year guarantee
Année garantie
Solus Garantie
Garantía de un año
Απόδειξη εγγύησης

Tools needed • Herramientas necesarias • Ferramentas necessárias
Gereklí aleřteli • Απαιτούμενα εργαλεία • Wymagane narzēdzia • Potřebné nářadí
Требуемые инструменты • Szükséges eszközök • Echipament necesar

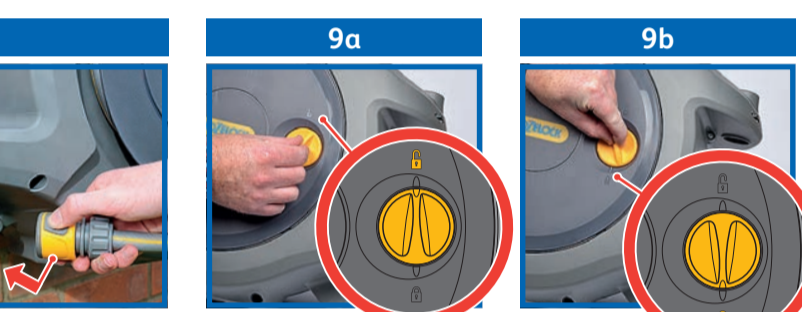
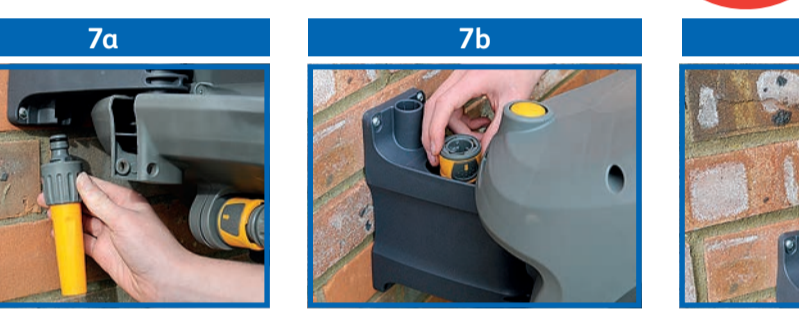
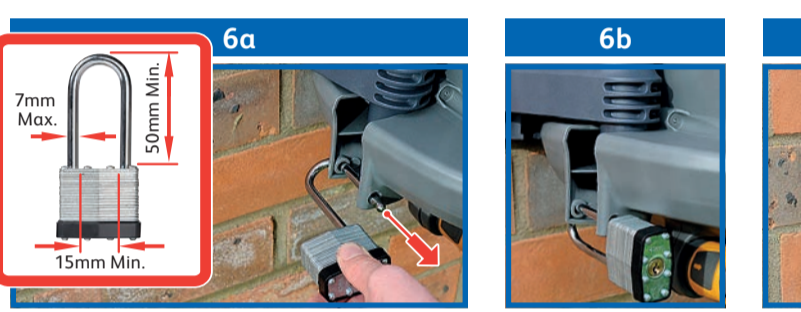
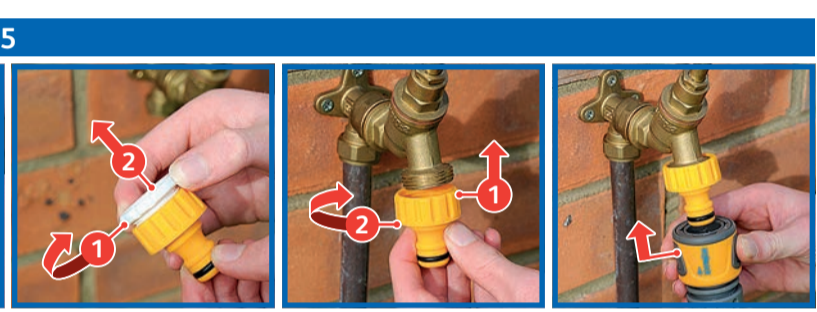
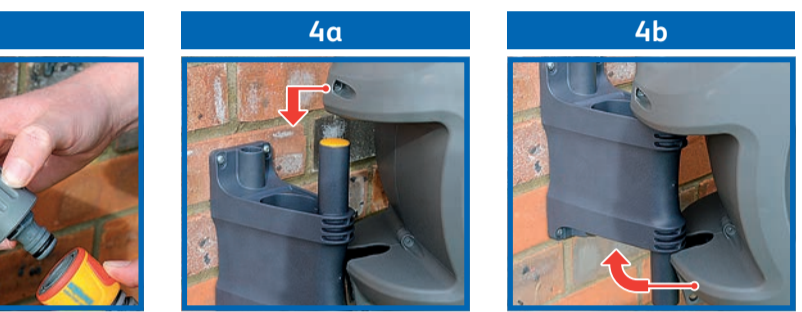
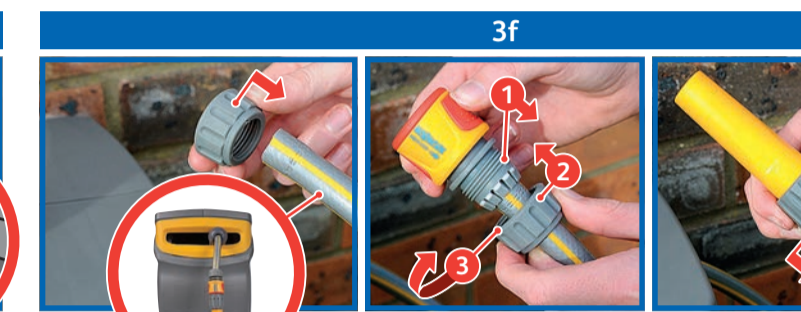
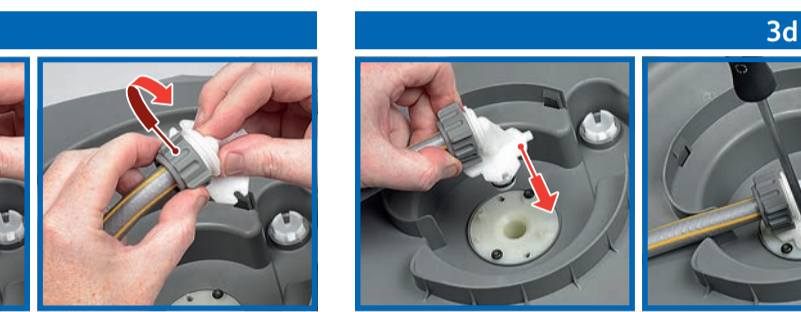
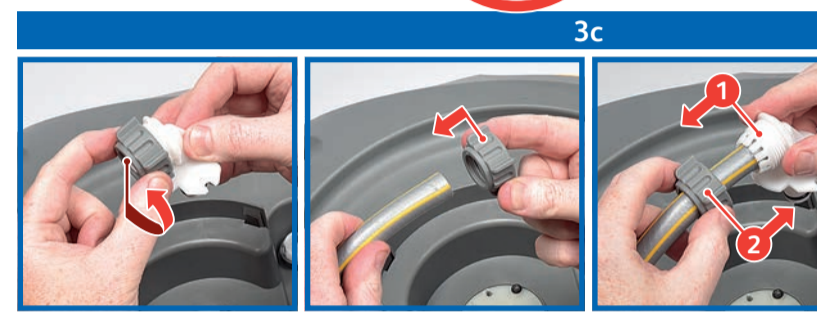
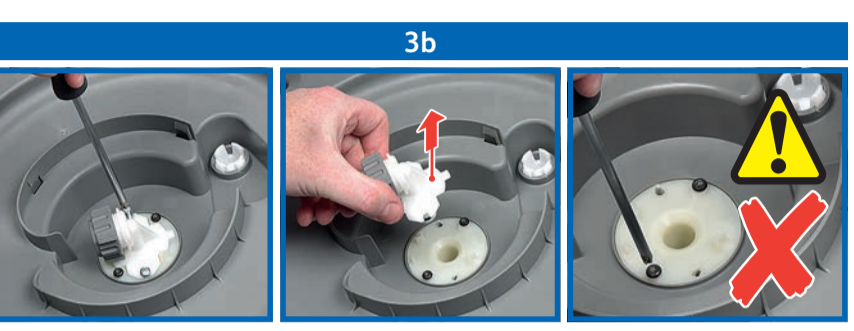
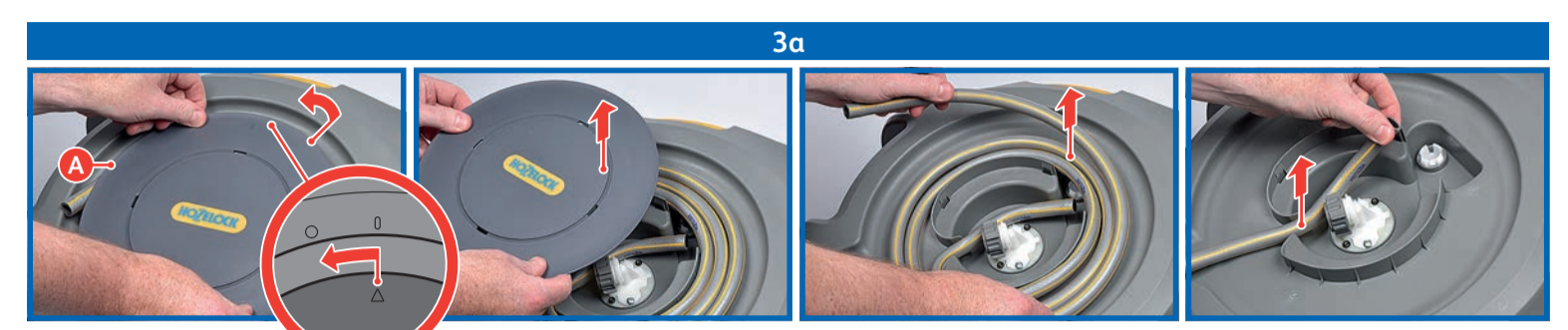
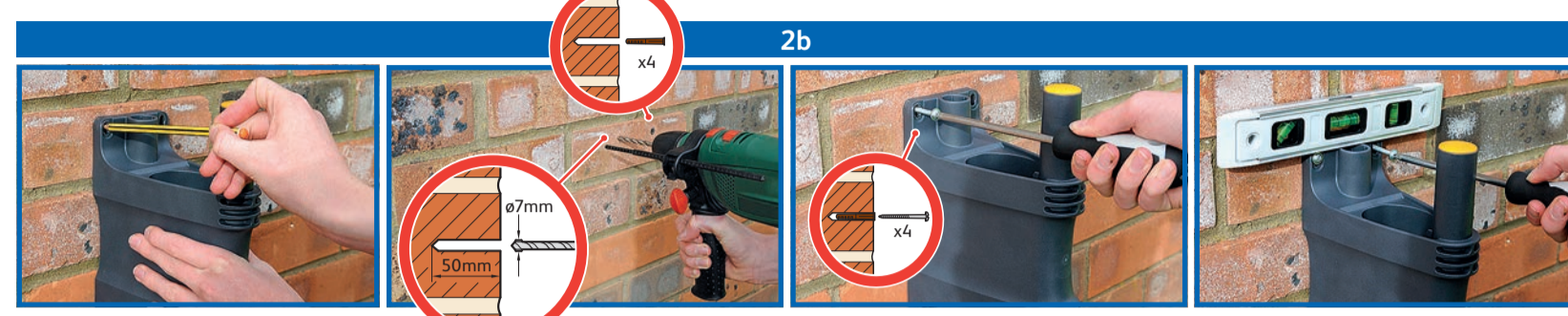
Contents • Contenido • Índice • İçinçelikler • Περιεχόμενα
Spis treści • Obsah • Содержание • Tartalom • Elemente

Model: 2401 20m Auto Reel
Model: 2402 25m Auto Reel
Model: 2403 30m Auto Reel

Pressure: 10bar (1MPa 14.5psi) Made in U.K.
Tmax = 40°C W = 8.6kg

Pressure: 10bar (1MPa 14.5psi) Made in U.K.
Tmax = 40°C W = 9.7kg

Pressure: 10bar (1MPa 14.5psi) Made in U.K.
Tmax = 40°C W = 10.8kg



Original instructions.
CAUTION – Read these instructions carefully before using this product. Keep these instructions for future reference.

- This product is intended for domestic, outdoor use with water only. Do not use for any other purpose.
- Children should be supervised to ensure that they do not play with this product.
- This product can be used by people with reduced physical, sensory or mental capabilities or lack of experience and knowledge if they have been given supervision or instruction concerning use of the machine in a safe way and understand the hazards involved.
- Use by unskilled persons or those who have not read and understood the instructions in the manual is forbidden.
- Any modifications made to the appliance shall render the Declaration of Conformity null and void and relieve the manufacturer of all liability under civil and criminal law.

Quick hints and tips

- When mounting the reel, ensure that nothing obstructs the reel from swinging freely through 180°.
- It is critical to use a 7mm drill when drilling holes to mount the reel.
- Ensure the wall bracket is mounted vertically using a spirit level.
- Check that the reel is locked onto the bracket before turning on water supply.
- The hose will not rewind unless it is pulled a short distance (15 to 30cm) away from the reel and then walked back towards the reel.
- If the hose will not rewind, try the following:
Turn off the tap and let the water out of the hose by opening the hose nozzle/gun.
Walk back to the reel with the end of the hose and trigger the rewind mechanism by taking hold of the hose near to the reel, and gently pull the hose about 15 to 30cm to release the latch.
(Ensure that nothing is obstructing the hose whilst the rewind procedure is active.)
- Use the lock on the side of the reel to lock the hose when not in use.
- Dip the end of the hose into a bowl of hot water for 30s to make it easier to fit to the hose connectors.

Assembly and installation of the Auto Reel

SELECT A SUITABLE POSITION FOR INSTALLATION

- Fig.1**
- The reel is designed for external use and is not suitable for use with indoor taps, unless used with an appropriate Indoor Tap Connector (Part No's; 2159, 2176, 2177, 2274, which are not supplied)
 - The reel should be able to swing through 180°. Allow 50cm of clearance on both sides of the wall bracket. (See Fig.1)
 - If the hose is to be used around corners, the wall bracket should be mounted at least 1.60m from the corner, and a hose guide should be used (part no; 2392, which is not supplied.)

MOUNT THE WALL BRACKET

- Fig.2**
- Remove the wall bracket (Contents B) from the reel by gently pulling the lower part of the bracket away from the Autoreel and allowing it to drop down (Fig.2a). The wall bracket is now ready for mounting.
 - Important: Ensure that the wall bracket is vertical (with the storage pocket at the top) using a spirit level, and that the correct size holes (7mm diameter and 50mm deep) are drilled (Fig.2b and template on the carton).
 - Use the four wall plugs and screws supplied (Contents F). The plugs and screws supplied are designed for use on standard brick and concrete walls. To fix the bracket to any other surface, you should use screws and plugs appropriate for that surface.

CONNECT THE FEEDER HOSE AND FITTINGS

If the feeder hose supplied is too short to reach your tap, replace it with a good quality 12.5mm (½") hose.

Fig.3 – Attaching the Feeder Hose:

- Lay the reel on a soft surface with side A uppermost and remove the side disc by twisting the disc anticlockwise and lifting off (Fig.3a). Then remove the feeder hose.
- Two positive screws hold the plate on the hose connector in place. Remove these two screws (Fig.3b).
NEVER attempt to remove the other two black security screws!

- Remove the hose connector. Unscrew the hose nut from the hose connector and slide it onto the hose.
- Push the end of the hose into the inlet teeth and tighten the nut (Fig.3c). Ensure that the hose is pushed all the way into the connector.
- Replace the hose connector into the Autoreel and replace the two screws (Fig.3d).
- Re-fit the side disc (Fig.3e).

Attach the hose end connector (Contents D) to the free end of the feeder hose. Attach the water stop connector (Contents E) to the watering hose and connect the nozzle/gun supplied to the water stop connector (Contents G) (Fig.3f).

HINT: Dip the end of the hose into a bowl of hot water for 30s to make it easier to fit to the hose connectors.

INSTALLING THE REEL

- Mount the reel onto the bracket by tipping the reel backwards and placing the top bracket socket of the reel onto the bracket (Fig.4a).
- Allow the Autoreel to fall onto the bottom bracket (Fig.4b).
- Attach the threaded tap connector (Contents C) to your tap and connect the feeder hose to it via the hose end connector (Fig.5).
- Test the assembly to ensure the reel swings freely through 180°. Turn the tap on and run the water through the reel before using it for the first time. Check for leaks and re-tighten hose connections if necessary.
- A long shackle padlock (not supplied) may be fitted to the reel when left unattended on the wall (Fig.6a).
- There are two accessory park points at the top and bottom of the bracket for stowage of hose end accessories (Fig.7a and Fig.7c).
- There is also a storage pocket at the top of the bracket for storage of spare connectors etc (Fig.7b).

USING THE REEL

- To pull out the hose, take hold of the hose end and walk away from the reel in any direction.
- The reel has an automatic latch to hold the hose in place for use at any required length. The hose may be placed on the ground and will not rewind.
- If more hose is required, pull out as necessary.
- To rewind the hose gently pull the hose between 15 to 30cm away from the reel to release the locking mechanism. Walk back towards the reel. Always hold the hose end whilst it rewinds. If you are struggling to do this try;

Turn off the tap and let the water out of the hose by opening the hose nozzle/gun.

Walk back to the reel with the end of the hose and trigger the rewind mechanism by taking hold of the hose near to the reel, and gently pull the hose about 15 to 30cm to release the latch.

(Ensure that nothing is obstructing the hose whilst the rewind procedure is active.)

IMPORTANT: THE HOSE END MUST BE WALKED BACK TO THE REEL.

USING THE SAFETY LOCK

- Fig.9**
- Operate the safety lock by using the dial on the side of the reel.
 - The safety lock has two functions:
To stop the hose being pulled out when fully re-wound.
To stop accidental rewind while the hose is in use.
 - To lock, turn the dial towards the (padlock closed) symbol (Fig.9a). To unlock, turn the dial so that it points towards the (padlock open) symbol (Fig.9b).
 - For added security always lock the reel when unattended.

Safety

Do not operate the safety lock while the reel is turning.
IMPORTANT: To prevent damage or injury:

- DO NOT:**
- Let go of the hose while rewinding. Always walk back to the reel holding the hose.
 - Place fingers or objects in the hose aperture of the reel during operation.
 - Attempt to remove the screws from any part of the product. DANGER: This product contains a pre-tensioned spring.
 - Remove the ball stop from the watering hose.

- DO:**
- Remove the reel from the wall in winter to prevent frost damage.
 - Keep the floor/ground below the reel as clear as possible from water to minimise any risk of slipping.
 - Turn the tap off and depressurise the hose when not in use.

To prevent damage being caused to your Auto Reel over the winter months it is advisable that the excess water be dispelled from the hosepipe.

This can be done by completing the following steps:

- Disconnect the feeder hose from the tap
- Place the end of the feeder hose on the ground
- Pull out all of the hose ensuring the hose end connection is 'closed' and then completely retract it
- Excess water will dispel from the feeder hose
- Repeat step 3 several times
- Connect the end of the feeder hose to the non-drip park point (Fig.8).

By dispelling the excess water from your Auto Reel, it will not only become lighter to transport inside during winter, but will reduce the risk of water freezing inside the reel.

Troubleshooting

Activating the Auto-Rewind

- The hose must be pulled out from the reel between 15cm to 30cm, any less or more and the hose will not auto-rewind. The easiest way to trigger the auto-rewind is by gently pulling the hose at the reel.

Leaks

- Remove the side disc and tighten the nut connecting the hose to the reel (Fig.3c).
- Tighten the nut on the hose end connector.
- Tighten the nut on the water stop connector.

Hose replacement

- If the watering hose becomes damaged, under no circumstances should you attempt to repair it. Contact Hozelock consumer services for assistance.

Auto Reel Mechanism

- Should the Auto Reel mechanism become faulty, even if outside of the warranty period do not attempt to repair it or take it apart. Contact Hozelock consumer services for assistance.

Spares and Accessories

- For spares and accessories, please visit www.hozelockservice.com

Advice

- For product advice please contact:
Hozelock Consumer Services,
Hozelock Ltd., Midpoint Park, Birmingham. B76 1AB.
Tel: 0121 313 1122
www.hozelock.com

Guarantee

- This Auto Reel is guaranteed for 2 years against faults arising from defective manufacture or materials.
*2 year guarantee + additional 3 years if you register online with Hozelock. Terms and conditions apply: www.hozelock.com/guarantee
- The Auto Reel can be returned to Hozelock for repairs and service, even after the guarantee has expired, for prices and details please visit: www.hozelockservice.com
Please keep your purchase receipt.

Declaration of Conformity

In accordance with BS EN ISO/IEC 17050-1:2010

Hozelock Ltd declare that when leaving our place of manufacture, the following Hozelock Auto Reel models :

- 2401 – Auto Reel with 20m hose or Demo Auto Reel
- 2402 – Auto Reel with 25m hose
- 2403 – Auto Reel with 30m hose

comply with the essential health & safety requirements of:

- 2006/42/EC – Machinery Directive
- EN ISO 12100-1:2010
- EN ISO 13857:2008

Signed by: *Nick Iacofano*

Nick Iacofano
Group Technical Director, Hozelock Ltd.,
Midpoint Park, Birmingham. B76 1AB.

Place of issue: Sutton Coldfield, England

Date of issue: 01 November 2017

Technical Data*

	Model		
	2401	2402	2403
Hose length	20m	25m	30m
Net weight	8.6 kg	9.7 kg	10.8 kg
Tmax	40°C		
Pmax	10 bar / 1 MPa / 14.5psi		

*Subject to technical modifications