

SMOKE AND FIRE[®] ALARM

10 YEAR SEALED BATTERY OPERATED PHOTOELECTRIC SMOKE ALARM WITH SILENCE AND ESCAPE LIGHT

IMPORTANT! PLEASE READ CAREFULLY AND SAVE.

The warnings/instructions card and manual contain important information about your Smoke Alarm's operation. If you are installing this Alarm for use by others, you must leave this manual — or a copy of it — with the end user. Reference product card for additional information.

Printed in Mexico
MO3-151427-P1210E-AUS L 5 17 CONFORMS TO UL STD 217 Model P1210E/AUS

All First Alert[®] Smoke Alarms conform to regulatory requirements, including UL217 and are designed to detect particles of combustion. Smoke particles of varying number and size are produced in all fires.

IMPORTANT! PLEASE READ CAREFULLY AND SAVE.
The warnings/instructions card and manual contain important information about your Smoke Alarm's operation. If you are installing this Alarm for use by others, you must leave this manual — or a copy of it — with the end user. Reference product card for additional information.

Photoelectric technology is generally more sensitive than ionization technology at detecting small particles, which tend to be produced in greater amounts by flaming fires, which consume combustible materials rapidly and spread quickly. Sources of these fires may include paper burning in a wastebasket, or a grease fire in the kitchen.

Photoelectric technology is generally more sensitive than ionization technology at detecting large particles, which tend to be produced in greater amounts by smoldering fires, which may smolder for hours before bursting into flames. Sources of these fires may include cigarettes burning in a couch or bedding.

For maximum protection, use both types of Smoke Alarms on each level and in every bedroom of your home.

INTRODUCTION

Thank you for choosing First Alert[®] for your Smoke Alarm needs. You have purchased a state of the art Smoke Alarm designed to provide you with early warning of a fire. Please take the time to read this manual and make the Smoke Alarm an integral part of your family's safety plan.

Key Features of P1210E Smoke Alarm:
Photoelectric Sensing Technology: Photoelectric Sensors are generally more sensitive than ionization sensors in detecting smoldering fires which commonly occur in couches or bedding.
OptiPath 360 Technology™: Patented technology provides 360° of direct access to the alarm sensor.
Single Test/Silence Button: Always use to test the Alarm or silence nuisance alarms. Testing the Alarm assures you that the unit is functioning correctly and ready to protect you and your family. The Alarm can be silenced for up to 9 minutes in the event of a nuisance alarm.
Escape Light: Bright LED escape light activates when this unit goes into alarm to illuminate your path to safety.
10 Year End of Life Indicator: 3 horn pulses every 43 seconds alerts you that the unit must be replaced.
Local Alarm Memory: Green LED flashes 3 times every 43 seconds for 24 hours. After 24 hours the unit will chirp rapidly while the Test button is pressed. Memory is cleared when the button is released.
Low battery warning: The Alarm will sound a "chirp" once per minute when the Smoke Alarm needs to be replaced.
Low battery silence: The Alarm can be silenced for 9 hours.
Red Blinking Power Indicator every 6 minutes: Confirms that the Smoke Alarm is receiving power.

FIRE SAFETY TIPS

Follow safety rules and prevent hazardous situations: 1) Use smoking materials properly. Never smoke in bed. 2) Keep matches or lighters away from children. 3) Store flammable materials in proper containers. 4) Keep electrical appliances in good condition and don't overload electrical circuits. 5) Keep stoves, barbecue grills, fireplaces and chimneys grease- and debris-free. 6) Never leave anything cooking on the stove unattended. 7) Keep portable heaters and open flames, like candles, away from flammable materials. 8) Don't use rubbish accumulators. Keep alarms clean and test them weekly. Replace alarms immediately if they are not working properly. Smoke Alarms that do not work cannot alert you to a fire. Keep at least one working fire extinguisher on every floor, and an additional one in the kitchen. Have fire escape ladders or other reliable means of escape from an upper floor in case stairs are blocked.

© 2017 BRK Brands, Inc. All rights reserved. Distributed by BRK Brands, Inc. • BRK Brands, Inc. is a subsidiary of Newell Brands Inc. (NYSE:NEW) • First Alert[®] is a registered trademark of The First Alert Trust • 40 Alameda Pky L138 - 140 Bayfield Rd East, Baywater North, VIC, 3153 Australia • Consumer Affairs: (03) 9720 4333 • www.firstalert.com • www.brkproducts.com

IF THIS SMOKE ALARM SOUNDS RESPONDING TO AN ALARM

During an alarm, you will hear a **loud, repeating horn pattern: 3 beeps, pause, 3 beeps, pause. The Escape Light will turn on. The Red LED flashes rapidly.**

! WARNING!

- If the unit alarms and you are not testing the unit, it is a warning sign of a potentially dangerous situation that requires your immediate attention. NEVER ignore any alarm. Ignoring the alarm may result in injury or death.
- Never remove the batteries from a battery operated Smoke Alarm to stop an unwanted alarm caused by cooking smoke, etc.). Removing batteries disables the alarm so it cannot sense smoke, and removes your protection. Instead open a window or fan the smoke away from the unit. The alarm will reset automatically.

WHAT TO DO IN CASE OF FIRE

- Don't panic but be prepared to evacuate quickly.
- Get out of the house as quickly as possible. Don't stop to get dressed or collect anything.
- Feel doors with the back of your hand before opening them. If a door is cool, open it slowly. Don't open a hot door. Keep doors and windows closed, unless you must escape through them.
- Cover your nose and mouth with a cloth (preferably damp). Take short, shallow breaths.
- Meet at your planned meeting place outside your home, and do a head count to make sure everybody got out safely.
- Call the Fire Department as soon as possible from outside. Give your address, then your name.
- Never go back inside a burning building for any reason.
- Contact your Fire Department for ideas on making your home safer.

! WARNING!
Alarms have various limitations. See "Limitations of Smoke Alarms" for details.

USING THE SILENCE FEATURE

The Silence Feature can temporarily quiet an unwanted alarm for up to 9 minutes. To use this feature, press the Test/Silence button on the cover. If the unit will not silence and no heavy smoke is present, or if it stays in silence mode continuously, it should be replaced immediately. The LED will flash every 10 seconds while in Silence.

! WARNING!

The Silence Feature does not disable the unit—it makes it temporarily less sensitive to smoke. For your safety, if smoke around the unit is dense enough to suggest a potentially dangerous situation, the unit will stay in alarm or re-alm quickly. You do not know the source of the smoke, so assume it is an unwanted alarm. Not responding to an alarm can result in property loss, injury, or death.

SILENCING THE LOW BATTERY WARNING

This Silence Feature can temporarily "chirp" the Low Battery warning "chirp". Press the Test/Silence button on the Alarm. The Red light flashes normally, once every 6 minutes, during Low Battery Warning Silence. After time, the low battery "chirp" will resume. Deactivate the Smoke Alarm and replace it immediately.

IF YOU SUSPECT A PROBLEM

Smoke Alarms may not operate properly because of a dead or weak battery, a build-up of dirt, dust or grease on the Smoke Alarm cover, or installation in an improper location. Clean the Smoke Alarm as described in "Regular Maintenance," and then test the Smoke Alarm again. If it fails to test properly when you use the test button, or if the problem persists, replace the Smoke Alarm immediately.

- If you hear a "chirp" about once a minute, replace the Smoke Alarm.
- If you experience frequent low-energy alarms (like those caused by cooking smoke), try relocating the Smoke Alarm.
- If the alarm sounds when no smoke is visible, try cleaning or relocating the Smoke Alarm. The cover may be dirty.
- If the alarm does not sound during testing, make sure the power pack activating lever is pushed all the way securely. The Escape Light bulb is not replaceable. In the unlikely event that the Escape Light does not operate during testing, please obtain warranty service.

Do not try fixing the Alarm yourself — this will void your warranty.

If the Smoke Alarm is still not operating properly, and it is still under warranty, please see "How to Obtain Warranty Service" in the Limited Warranty.

SMOKE AND FIRE[®] ALARM

10 YEAR SEALED BATTERY OPERATED PHOTOELECTRIC SMOKE ALARM WITH SILENCE AND ESCAPE LIGHT

IMPORTANT! PLEASE READ CAREFULLY AND SAVE.

The manual contains important information about your Smoke Alarm's operation. If you are installing this Alarm for use by others, you must leave this manual — or a copy of it — with the end user. Reference product card for additional information.

Printed in Mexico
MO3-151427-P1210E-AUS L 5 17 CONFORMS TO UL STD 217 Model P1210E

All First Alert[®] Smoke Alarms conform to regulatory requirements, including UL217 and are designed to detect particles of combustion. Smoke particles of varying number and size are produced in all fires.

IMPORTANT! PLEASE READ CAREFULLY AND SAVE.
The manual contains important information about your Smoke Alarm's operation. If you are installing this Alarm for use by others, you must leave this manual — or a copy of it — with the end user. Reference product card for additional information.

Photoelectric technology is generally more sensitive than ionization technology at detecting small particles, which tend to be produced in greater amounts by flaming fires, which consume combustible materials rapidly and spread quickly. Sources of these fires may include paper burning in a wastebasket, or a grease fire in the kitchen.

Photoelectric technology is generally more sensitive than ionization technology at detecting large particles, which tend to be produced in greater amounts by smoldering fires, which may smolder for hours before bursting into flames. Sources of these fires may include cigarettes burning in a couch or bedding.

For maximum protection, use both types of Smoke Alarms on each level and in every bedroom of your home.

INTRODUCTION

Thank you for choosing First Alert[®] for your Smoke Alarm needs. You have purchased a state of the art Smoke Alarm designed to provide you with early warning of a fire. Please take the time to read this manual and make the Smoke Alarm an integral part of your family's safety plan.

Key Features of P1210E Smoke Alarm:
Photoelectric Sensing Technology: Photoelectric Sensors are generally more sensitive than ionization sensors in detecting smoldering fires which commonly occur in couches or bedding.
OptiPath 360 Technology™: Patented technology provides 360° of direct access to the alarm sensor.
Single Test/Silence Button: Always use to test the Alarm or silence nuisance alarms. Testing the Alarm assures you that the unit is functioning correctly and ready to protect you and your family. The Alarm can be silenced for up to 9 minutes in the event of a nuisance alarm.
Escape Light: Bright LED escape light activates when this unit goes into alarm to illuminate your path to safety.
10 Year End of Life Indicator: 3 horn pulses every 43 seconds alerts you that the unit must be replaced.
Local Alarm Memory: Green LED flashes 3 times every 43 seconds for 24 hours. After 24 hours the unit will chirp rapidly while the Test button is pressed. Memory is cleared when the button is released.
Low battery warning: The Alarm will sound a "chirp" once per minute when the Smoke Alarm needs to be replaced.
Low battery silence: The Alarm can be silenced for 9 hours.
Red Blinking Power Indicator every 6 minutes: Confirms that the Smoke Alarm is receiving power.

FIRE SAFETY TIPS

Follow safety rules and prevent hazardous situations: 1) Use smoking materials properly. Never smoke in bed. 2) Keep matches or lighters away from children. 3) Store flammable materials in proper containers. 4) Keep electrical appliances in good condition and don't overload electrical circuits. 5) Keep stoves, barbecue grills, fireplaces and chimneys grease- and debris-free. 6) Never leave anything cooking on the stove unattended. 7) Keep portable heaters and open flames, like candles, away from flammable materials. 8) Don't use rubbish accumulators. Keep alarms clean and test them weekly. Replace alarms immediately if they are not working properly. Smoke Alarms that do not work cannot alert you to a fire. Keep at least one working fire extinguisher on every floor, and an additional one in the kitchen. Have fire escape ladders or other reliable means of escape from an upper floor in case stairs are blocked.

© 2017 BRK Brands, Inc. All rights reserved. Distributed by BRK Brands, Inc. • BRK Brands, Inc. is a subsidiary of Newell Brands Inc. (NYSE:NEW) • First Alert[®] is a registered trademark of The First Alert Trust • 40 Alameda Pky L138 - 140 Bayfield Rd East, Baywater North, VIC, 3153 Australia • Consumer Affairs: (03) 9720 4333 • www.firstalert.com • www.brkproducts.com

IF THIS SMOKE ALARM SOUNDS RESPONDING TO AN ALARM

During an alarm, you will hear a **loud, repeating horn pattern: 3 beeps, pause, 3 beeps, pause. The Escape Light will turn on. The Red LED flashes rapidly.**

! WARNING!

- If the unit alarms and you are not testing the unit, it is a warning sign of a potentially dangerous situation that requires your immediate attention. NEVER ignore any alarm. Ignoring the alarm may result in injury or death.
- Never remove the batteries from a battery operated Smoke Alarm to stop an unwanted alarm caused by cooking smoke, etc.). Removing batteries disables the alarm so it cannot sense smoke, and removes your protection. Instead open a window or fan the smoke away from the unit. The alarm will reset automatically.

WHAT TO DO IN CASE OF FIRE

- Don't panic but be prepared to evacuate quickly.
- Get out of the house as quickly as possible. Don't stop to get dressed or collect anything.
- Feel doors with the back of your hand before opening them. If a door is cool, open it slowly. Don't open a hot door. Keep doors and windows closed, unless you must escape through them.
- Cover your nose and mouth with a cloth (preferably damp). Take short, shallow breaths.
- Meet at your planned meeting place outside your home, and do a head count to make sure everybody got out safely.
- Call the Fire Department as soon as possible from outside. Give your address, then your name.
- Never go back inside a burning building for any reason.
- Contact your Fire Department for ideas on making your home safer.

! WARNING!
Alarms have various limitations. See "Limitations of Smoke Alarms" for details.

USING THE SILENCE FEATURE

The Silence Feature can temporarily quiet an unwanted alarm for up to 9 minutes. To use this feature, press the Test/Silence button on the cover. If the unit will not silence and no heavy smoke is present, or if it stays in silence mode continuously, it should be replaced immediately. The LED will flash every 10 seconds while in Silence.

! WARNING!

The Silence Feature does not disable the unit—it makes it temporarily less sensitive to smoke. For your safety, if smoke around the unit is dense enough to suggest a potentially dangerous situation, the unit will stay in alarm or re-alm quickly. You do not know the source of the smoke, so assume it is an unwanted alarm. Not responding to an alarm can result in property loss, injury, or death.

SILENCING THE LOW BATTERY WARNING

This Silence Feature can temporarily "chirp" the Low Battery warning "chirp". Press the Test/Silence button on the Alarm. The Red light flashes normally, once every 6 minutes, during Low Battery Warning Silence. After time, the low battery "chirp" will resume. Deactivate the Smoke Alarm and replace it immediately.

IF YOU SUSPECT A PROBLEM

Smoke Alarms may not operate properly because of a dead or weak battery, a build-up of dirt, dust or grease on the Smoke Alarm cover, or installation in an improper location. Clean the Smoke Alarm as described in "Regular Maintenance," and then test the Smoke Alarm again. If it fails to test properly when you use the test button, or if the problem persists, replace the Smoke Alarm immediately.

- If you hear a "chirp" about once a minute, replace the Smoke Alarm.
- If you experience frequent low-energy alarms (like those caused by cooking smoke), try relocating the Smoke Alarm.
- If the alarm sounds when no smoke is visible, try cleaning or relocating the Smoke Alarm. The cover may be dirty.
- If the alarm does not sound during testing, make sure the power pack activating lever is pushed all the way securely. The Escape Light bulb is not replaceable. In the unlikely event that the Escape Light does not operate during testing, please obtain warranty service.

Do not try fixing the Alarm yourself — this will void your warranty.

If the Smoke Alarm is still not operating properly, and it is still under warranty, please see "How to Obtain Warranty Service" in the Limited Warranty.

BEFORE YOU INSTALL THIS SMOKE ALARM

IMPORTANT! Read "Recommended Locations for Smoke Alarms" and "Locations to Avoid for Smoke Alarms" before beginning. This unit monitors the air, and when smoke reaches its sensing chamber, it alarms. It can give you more time to escape before fire spreads. This unit can ONLY give an early warning of developing fires if it is installed, maintained and located where smoke can reach it, and where all residents can hear it, as described in this manual. This unit will not set gas, heat, or fire alarms. It cannot prevent or extinguish fires.

Understand the Different Types of Smoke Alarms: Battery powered or electrical? Different Smoke Alarms provide different types of protection. See "About Smoke Alarms" for details.

Know Where to Install Your Smoke Alarm: Fire Safety Professionals recommend at least one Smoke Alarm on every level of your home. In every bedroom, and in every bedroom hallway or separate sleeping area. See "Recommended Locations for Smoke Alarms" and "Locations to Avoid for Smoke Alarms" for details.

Know What Smoke Alarms Can and Can't Do: A Smoke Alarm can help alert you to fire, giving you precious time to escape. It can only sound an alarm once smoke reaches the sensor. See "Limitations of Smoke Alarms" for details.

Check Your Local Building Codes: This Smoke Alarm is designed to be used in a typical single-family home. It alone will not meet requirements for boarding houses, apartment buildings, hotels or motels. See "Special Compliance Considerations" for details.

HOW TO INSTALL THIS SMOKE ALARM

TOOLS YOU WILL NEED:

This unit is designed to be mounted on the ceiling, or on the wall if necessary.

- Pencil
- Drill with 3/16" (5 mm) drill bit
- Hammer
- Standard flathead screwdriver

THE PARTS OF THIS SMOKE ALARM

1. Test/Silence button
2. Dual Power indicator light and Alarm indicator: Green LED provides visual indication of an Alarm Memory condition. Red LED provides visual indication of an Alarm and flash modes
3. LED Escape Light
4. Mounting bracket
5. Mounting slots
6. Turn this way to attach
7. Turn this way to remove

FOLLOW THESE SIMPLE STEPS

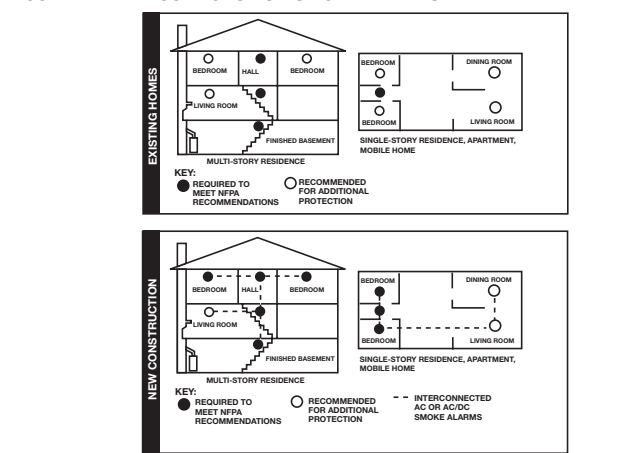
1. Hold the mounting bracket against the ceiling (or wall) so the two clusters of universal mounting holes are aligned approximately at the 9:00 and 3:00 o'clock positions. See image. Choose one of the three sets of holes shown, A, B or C (see image) and trace around one of the sets. Be sure to choose a top and bottom slot on opposite sides so you can rotate the universal mounting bracket to put into installation mode. This will make it easier in the future to remove the mounting bracket without completely removing the screws.

! WARNING!

Do not install this Smoke Alarm over an existing electrical box. Only AC powered units are intended for installation over electrical boxes.

2. Put the unit where it won't get covered with dust when you drill the mounting holes.
3. Using a 3/16" (5 mm) drill bit, drill a hole through the center of the oval outlines you traced.
4. Insert the plastic screw anchors (in the plastic bag with screws into the holes. Tap the screw anchors gently with a hammer, if necessary, until they are flush with the ceiling or wall.
5. Insert the screws but do not tighten completely. Attach the mounting bracket by aligning the screws in the open portion of the universal mounting slots and rotating the bracket into place. Tighten the screws until they are snug to secure the bracket. Do not over tighten.
6. **Activating the battery:** Mount alarm mounting bracket to activate. Once unit is activated, it cannot be turned off. **NOTE:** After you activate the battery, the power indicator light may flash. If the unit alarms, the light will blink rapidly, and the horn will repeatedly sound 3 beeps, pause, 3 beeps.) Once the Smoke Alarm is on the bracket, you can rotate the Alarm to adjust the alignment.
7. Test the Smoke Alarm. See "Weekly Testing."
8. After 10 years of operation of Low Battery warning, deactivate the Smoke Alarm. Insert a tool below edge where shown and break tab. Then slide activation switch to deactivate mode. **NOTE:** At end of life or low battery indication (chirp): unit must not put into deactivation mode to deactivate remaining stored energy in battery. Unit will no longer function once put into this mode. Unit will reset re-mounting.

RECOMMENDED LOCATIONS FOR SMOKE ALARMS



Installing Smoke Alarms in Single-Family Residences
The National Fire Protection Association (NFPA) recommends one Smoke Alarm on every floor, in every sleeping area, and in every bedroom. In new construction, the Smoke Alarms must be AC powered and interconnected. See "Agency Placement Recommendations" for details. For additional coverage, it is recommended that you install a Smoke Alarm in all rooms: finished attics, and basements, where temperatures normally remain between 40° F (4° C) and 100° F (37.8° C). Make sure no door or other obstruction could keep smoke from reaching the Smoke Alarms.

More specifically, install Smoke Alarms:

- On every level of your home, including finished attics and basements.
- Inside every bedroom, especially if people sleep with doors closed.
- In the hall near every sleeping area. If your home has multiple sleeping areas, install an unit in each. If a hall is over 40 feet (12 meters) long, install an Alarm at each end.
- At the top of the first-to-second floor stairway, and at bottom of basement stairway.

IMPORTANT!

Specific Smoke Alarm installation varies from state to state and from region to region. Check with your local Fire Department for current requirements in your area. It is recommended AC/AC/DC units be interconnected for added protection.

OPTIONAL LOCKING FEATURE

The optional locking feature is designed to prevent unauthorized removal of the alarm. It is not necessary to activate the lock in single-family households where unauthorized alarm removal is not a concern.

Tools you will need:

- Needle-nose pliers or utility knife
- Standard flathead screwdriver

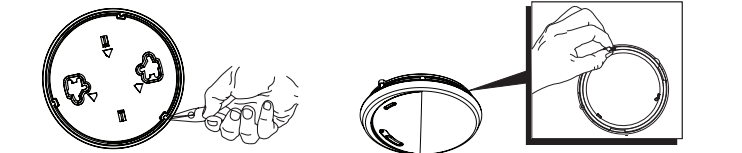
The feature uses a locking pin which is molded into the mounting bracket. Locking Pin
Remove locking pin by using needle-nose pliers or a utility knife.

IMPORTANT!

To permanently remove the locking pin, insert a flathead screwdriver between the locking pin and pry the end of the lock.

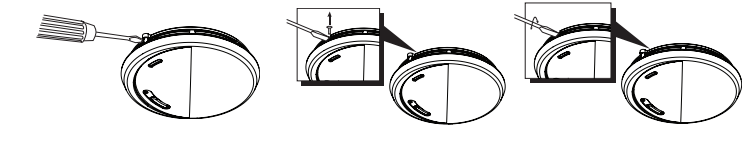
TO LOCK THE MOUNTING BRACKET

1. Using needle-nose pliers, detach the pin from the mounting bracket.
2. Insert the locking pin through the hole on the back of the smoke alarm as shown in the diagram.
3. When you attach the alarm to the mounting bracket the locking pin's head will fit into a notch on the bracket.



TO UNLOCK THE MOUNTING BRACKET

1. Insert a flathead screwdriver in between the mounting bracket and the locking pin.
2. Pry the alarm away from the bracket by pushing up the screwdriver and turning the alarm counterclockwise (left) at the same time.



AGENCY PLACEMENT RECOMMENDATIONS

NFPA 72 Chapter 29- For your information, the National Fire Alarm and Signaling Code, NFPA 72, reads as follows:"

29.5.1.1 Where required by other governing laws, codes, or standards for a specific type of occupancy, approved single and multiple-station smoke alarms shall be installed as follows:

- (1) In all sleeping rooms and guest rooms.
- (2) Outside of each separate dwelling unit sleeping area, within 21 ft (6.4 m) of any door to a sleeping room, with the distance measured along a path of travel.
- (3) On every level of a dwelling unit, including basements.
- (4) On every level of a residential board and care occupancy (small facility), including basements and excluding crawl spaces and unfinished attics.
- (5) In the living area(s) of a guest suite.
- (6) In the living area(s) of a residential board and care occupancy (small facility). (Reprinted with permission from NFPA 720, National Fire Alarm and Signaling Code Copyright © 2010 National Fire Protection Association, Quincy, MA 02269. This reprinted material is not the complete and official position of the National Fire Protection Association, on the referenced subject which is represented only by the standard in its entirety.) (National Fire Alarm and Signaling Code® and NFPA 720 are registered trademarks of the National Fire Protection Association, Inc., Quincy, MA 02269).
- California State Fire Marshal (CSFM) Early warning detection is best achieved by the installation of fire detection equipment in all rooms and areas of the household as follows: A Smoke Alarm installed in each separate sleeping area in the vicinity, but outside bedrooms, and heat or Smoke Alarms in the living rooms, dining rooms, bedrooms, kitchens, hallways, finished attics, furnace rooms, closets, utility and storage rooms, basements, and attached garages.

LOCATIONS TO AVOID FOR SMOKE ALARMS

For best performance, it is recommended you AVOID installing Smoke Alarms in these areas:

- Where combustion particles are produced. Combustion particles form when something burns. Areas to avoid include poorly ventilated kitchens, garages, and furnace rooms. Keep units at least 20 feet (6 meters) from the sources of combustion particles (stove, furnace, water heater, space heater) if possible. In areas where a 20-foot (6-meter) distance is not possible — in modular, mobile, or smaller homes, for example — it is recommended the Smoke Alarm be placed as far from these fuel-burning sources as possible. The placement recommendations are intended to keep the Smoke Alarm at a reasonable distance from a fuel-burning source, and thus reduce "unwanted" alarms. Unwanted alarms can occur if a Smoke Alarm is placed directly next to a fuel-burning source. Ventilate these areas as much as possible.
- In air streams near kitchens. Air currents can draw cooking smoke into the sensing chamber of a Smoke Alarm near the kitchen.
- In very damp, humid or steamy areas, or directly near bathrooms with showers. Keep units at least 10 feet (3 meters) away from showers, saunas, dishwashers, etc.
- Where the temperatures are regularly below 40° F (4° C) or above 100° F (37.8° C), including unheated buildings, outdoor rooms, porches, or unfinished attics or basements.
- In very dusty, dirty, or grassy areas. Do not install a Smoke Alarm directly over the stove or range. Keep laundry room Smoke Alarms free of dust or lint.
- Near fresh air vents, ceiling fans, or in very drafty areas. Drafts can blow smoke away from the unit, preventing it from reaching the sensing chamber.
- In recessed or shallow areas, such as under the wall-to-wall carpeting, or in "dead air" spaces.
- Less than 12 inches (305mm) away from fluorescent lights. Electrical "noise" can interfere with the sensor.
- In "dead air" spaces. "Dead air" spaces may prevent smoke from reaching the Smoke Alarm.

AVOIDING DEAD AIR SPACES

"Dead air" spaces may prevent smoke from reaching the Smoke Alarm. To avoid dead air spaces, follow the installation recommendations below.

ON CEILING: Install Smoke Alarms as close to the center of the ceiling as possible. If this is not possible, install the Smoke Alarm at least 4 inches (102 mm) from the wall or corner.

FOR WALL MOUNTING (if allowed by building codes), the top edge of Smoke Alarms should be placed between 4 and 12 inches (102 mm) from the wall-to-wall carpeting line, below typical "dead air" spaces.

ON A PEAK, GARBLE, OR CATHEDRAL CEILING: Install the first Smoke Alarm within 3 feet (0.9 meters) of the peak of the ceiling, measured horizontally. Additional Smoke Alarms may be required depending on the length, angle, etc. of the ceiling's slope. Refer to NFPA 72 for details on requirements for sloped or peaked ceilings.

WEEKLY TESTING

! WARNING!

- NEVER use an open flame of any kind to test this unit. You might accidentally damage or set fire to the unit or to your home.
- If the Alarm ever fails to test properly, replace it immediately. Products under warranty may be returned to the manufacturer for replacement. See "Limited Warranty" for details.
- **DO NOT stand close to the Alarm when the horn is sounding. Exposure at close range may be harmful to your hearing. When testing, step away when horns starts sounding.**

It is important to test this unit every week to make sure it is working properly. Using the Test/Silence button is the recommended way to test this Smoke Alarm. Press and hold the Test/Silence button on the cover of the unit until the alarm sounds and the Escape Light turns on (the unit may continue to alarm for a few seconds after you release the button). If it does not alarm, make sure the unit is receiving power and test it again. If it still does not alarm, replace it immediately. During testing you will hear a loud, repeating horn pattern: 3 beeps, pause, 3 beeps, pause. The Escape Light will turn on. Red LED flashes rapidly.

REGULAR MAINTENANCE

This unit has been designed to be as maintenance free as possible, but there are a few simple things you must do to keep it working properly.

- Test it at least once a week.
- Clean the Smoke Alarm at least once a month, gently vacuum off any dust using your household vacuum's soft brush attachment, and test the Smoke Alarm after cleaning. Never use water, cleaners or solvents since they may damage the unit.
- If the Smoke Alarm becomes contaminated by excessive dirt, dust and/or grime, and cannot be cleaned to avoid unwanted alarms, replace the unit immediately.
- Relocate the unit if it sounds frequent unwanted alarms. See "Locations to Avoid For Smoke Alarms" for details.
- When the battery becomes weak, the Smoke Alarm unit will "chirp" approximately once a minute (the Low Battery warning). This low battery warning should last for up to 30 days, but you should replace the Smoke Alarm immediately to continue your protection.

IMPORTANT!

Actual service life depends on the Smoke Alarm and the environment in which it is installed. You MUST replace the Smoke Alarm immediately once the unit starts "chirping" (the "low battery warning").

LIMITED WARRANTY

BRK Brands, Inc. ("BRK" the maker of First Alert® brand products warrants that for a period of ten years from the date of purchase, this product will be free from defects in material and workmanship. BRK, at its option, will repair or replace this product or any component of the product found to be defective during the warranty period. Replacement will be made with a new or re-manufactured product or component. If the product is no longer available, replacement may be made with a similar product of equal or greater value. This is your exclusive warranty. This warranty is valid for the original retail purchaser from the date of initial retail purchase and is not transferable. Keep the original sales receipt. Proof of purchase is required to obtain warranty performance. BRK dealers, service centers, or retail stores selling BRK products do not have the right to alter, modify or any way change the terms and conditions of this warranty. Should this product need to be returned, BRK Brands, Inc. will bear all costs related to the return. This warranty does not cover normal wear or tear or damage resulting from any of the following: negligent use or misuse of the product, use on improper voltage or current, use contrary to the operating instructions, disassembly, repair or alteration by anyone other than BRK or an authorized service center. Further, the warranty does not cover Acts of God, such as fire, flood, hurricanes and tornadoes or any batteries that are included with this unit. BRK shall not be liable for any incidental or consequential damages caused by the breach of any express or implied warranty. Except to the extent prohibited by applicable law, any implied warranty of merchantability or fitness for a particular purpose is limited in duration to the duration of the above warranty. Some states, provinces or jurisdictions do not allow the exclusion or limitation of incidental or consequential damages or limitations on how long an implied warranty lasts, so the above limitations or exclusion may not apply to you. This warranty gives you specific legal rights, and you may have other rights that vary from state to state or province to province. Our goods come with guarantees that cannot be excluded under the Australian Consumer Law. You are entitled to a replacement or refund for a major failure and for compensation for any other reasonably foreseeable loss or damage. You are also entitled to have the goods repaired or replaced if the goods fail to be of acceptable quality and the failure does not amount to a major failure.

How To Obtain Warranty Service:

Service: If service is required, do not return the product to your retailer. In order to obtain warranty service, contact:

Alameda Pky L138 - 140 Bayfield Rd East, Baywater North, VIC, 3153 Australia Pk (03) 9710 7000

Battery: BRK Brands, Inc. make no warranty, express or implied, written or oral, including that of merchantability or