



GET GOING ON YOUR RIDGI!

1 CHOOSE YOUR SLEEPERS

All sleepers are 150x50mmx1.5m

IRONBARK

ITEM NO 1080347



SMOOTH

ITEM NO 1080327



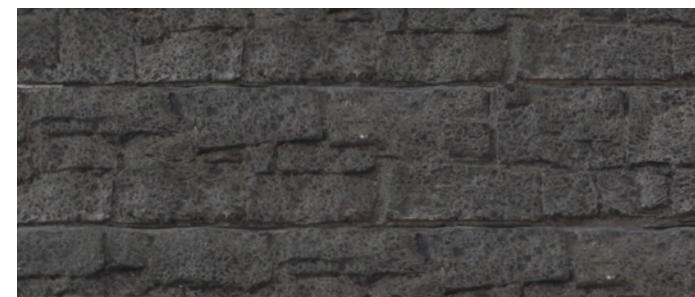
GUMTREE

ITEM NO 1080351



THE ROCKS

ITEM NO 1080428



2 SELECT YOUR POSTS

Posts should be twice as high as your wall

ENDERS

| ORIGINAL | |
|-------------|---------|
| POST HEIGHT | ITEM NO |
| 650 | 1080333 |
| 900 | 1080334 |
| 1200 | 1080335 |
| 1500 | 1080336 |
| 1800 | 1080337 |

| RIDGI PLUS+ | |
|-------------|---------|
| POST HEIGHT | ITEM NO |
| 650 | 1080408 |
| 900 | 1080409 |
| 1200 | 1080410 |
| 1500 | 1080412 |
| 1800 | 1080413 |

JOINERS

| ORIGINAL | |
|-------------|---------|
| POST HEIGHT | ITEM NO |
| 650 | 1080338 |
| 900 | 1080339 |
| 1200 | 1080340 |
| 1500 | 1080341 |
| 1800 | 1080342 |

| RIDGI PLUS+ | |
|-------------|---------|
| POST HEIGHT | ITEM NO |
| 650 | 1080424 |
| 900 | 1080425 |
| 1200 | 1080405 |
| 1500 | 1080406 |
| 1800 | 1080407 |

CORNERS

| ORIGINAL | |
|-------------|---------|
| POST HEIGHT | ITEM NO |
| 650 | 1080343 |
| 900 | 1080344 |
| 1200 | 1080345 |
| 1500 | 1080331 |
| 1800 | 1080332 |

FENCE BRACKET



ITEM NO 1080353

*RIDGI Fence Brackets are not supplied with bolts.

WHAT IS EFFLORESCENCE?

Efflorescence is the formation of mineral deposits, usually white, on the surface of concrete which can cause slight discolouration. Efflorescence on concrete is not a product fault, and is easily removed through normal maintenance. Visit ridgi.com.au for more information.

How It Works

It's as simple as 1,2,3! Follow the steps shown to purchase or order your product. If you need further advice, speak to a team member at the Special Orders Desk in-store.

1. Select The Product You Want

View the extensive range available in this brochure or online. Use the number/s shown below to order your product in-store.

IRONBARK

ITEM NO 1080347



ENDERS

| ORIGINAL | |
|-------------|---------|
| POST HEIGHT | ITEM NO |
| 600 | 1080333 |

JOINERS

| ORIGINAL | |
|-------------|---------|
| POST HEIGHT | ITEM NO |
| 600 | 1080338 |

2. Order at the Special Orders Desk

After you have selected the product you want, take this brochure to the Special Orders Desk.

3. Get It Home

We Will Deliver

Delivery to your home or site can be arranged in-store when purchasing your products

Pick-Up In-Store

If you decide to pick-up in-store and need help to get it home, you can:

- borrow a courtesy trailer
- hire a vehicle

Check with your local Bunnings store for availability.

Please note minimum order values apply

Please check with Special Orders team member to confirm direct delivery lead times and cost.



www.ridgi.com.au



9 348020 002002



REINFORCED CONCRETE RETAINING WALLS

DIY CONCRETE SLEEPER & GALVANISED STEEL POST RETAINING WALL SYSTEM

- ✓ 100% termite proof materials
- ✓ Easy to design and install system
- ✓ Perfect for walls up to 900mm tall
- ✓ Great textures to match your garden, or paint to match your existing colour scheme

Available at
BUNNINGS
warehouse



RIDGI.COM.AU

Take This Brochure to the Special Orders Desk to place an order



EASY-AS DESIGN & INSTALLATION GUIDE

RIDGI REINFORCED CONCRETE SLEEPERS

When you do-it-yourself with RIDGI you're using a reinforced retaining wall system that has been designed, engineered and certified specifically for retaining walls, garden beds and edging up to a height of 900mm.

The RIDGI System comprises reinforced concrete sleepers and strong, long lasting 60UC hot dipped galvanised steel posts and fence brackets.

This means you won't have to worry about termites, rot or warping, and your RIDGI will stand the test of time. The RIDGI system has a 15 year warranty and is proudly Australian designed and manufactured by Austral Masonry.

The variety of sleeper finishes enables you to easily get the look you want. Want to match your existing house colour scheme or landscape or get a timber look? The RIDGI sleeper finishes give you both - you can even paint them to match!



RIDGI REINFORCED CONCRETE SLEEPERS

Your RIDGI Reinforced Concrete Sleepers are engineer designed and reinforced, meaning they are strong and reliable. RIDGI Reinforced Sleepers come in a variety of designs, textures and finishes.

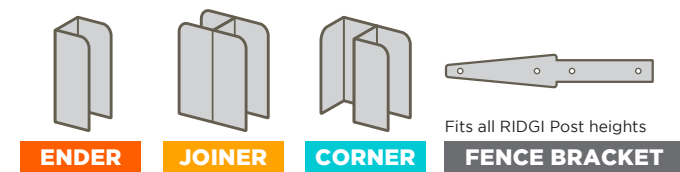
Many people love the Ironbark which looks like timber, or the smooth look that can be painted to match your existing colour scheme. All RIDGI Reinforced Concrete Sleepers are 150mm high by 1.5m long, and a sturdy 50mm thick, including internal reinforcing.



RIDGI RETAINING POSTS & FENCE BRACKETS

Designed to give lasting protection against weather and corrosion, RIDGI Retaining Posts and Fence Brackets are made from 60UC and 3mm hot dipped galvanised steel so they're stronger, last longer and are hassle free.

RIDGI Retaining Posts are colour coded and simple to use - Ender, Corner and Joiner posts are easily configured to create the perfect design. RIDGI posts are sold in a variety of heights to suit walls from 300 to 900mm high. RIDGI Retaining Posts can also be fitted with RIDGI Fence Brackets, which are weight rated for Colorbond® fencing. This gives you the flexibility to begin building immediately above your wall, saving room and giving you a cleaner line. *up to a maximum of 1.8m high



KNOW YOU'RE BUILDING WITH THE BEST

RIDGI exceeds the requirements of the Australian Standards for Earth-Retaining Structures (AS4678) as well as the standard set in the AS/NZS4680 standards of Hot Dip Galvanizing.

In line with the Non-Conforming Building Products Code of Practice Guidelines, we are proud to report that the RIDGI range satisfy the relevant regulatory provisions, specified in the National Construction Code (NCC).

RIDGI PLUS+

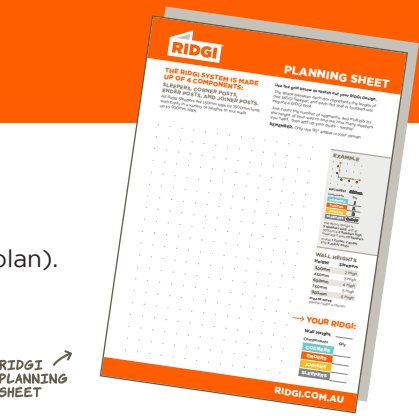
RIDGI PLUS+ posts offer another level of customisation and longevity.

Featuring an attractive gun-metal, "hammered" finish, RIDGI PLUS+ are perfect for crafting a signature look that can elevate your RIDGI to the next level, or provide a streamlined look to your design. Beyond looking great, the powder coating process means they're guaranteed for 25 years!



WHAT YOU'LL NEED BEFORE YOU GET STARTED

- ✓ Measuring Tape
- ✓ Level and String Line
- ✓ Shovel
- ✓ Steel Posts or Pegs
- ✓ Post Hole Digger
- ✓ RIDGI Planning Sheet (available at ridgi.com.au/plan).
- ✓ Quick set concrete
- ✓ Ag pipe and weed matting
- ✓ RIDGI Reinforced Sleepers of your choice
- ✓ RIDGI Retaining Posts



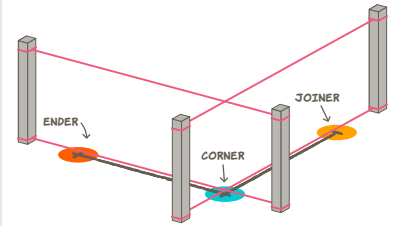
1 DESIGN YOUR RIDGI

- Measure out and sketch your RIDGI using our Planning Sheet
- Count up the number and kinds of Retaining Posts you need, and decide on the finish of your Sleepers.

| Components | Qty |
|------------|-------|
| ENDERS | 2 |
| CORNERS | 1 |
| JOINERS | 2 |
| SLEEPERS | 4x2=8 |

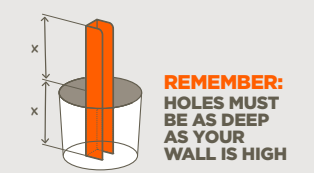
2 PREP YOUR SITE

- Clear and level your site area, making sure you leave 200mm clear behind the RIDGI - you'll need it for backfill.
- Hammer steel posts or pegs where your RIDGI will start and end.
- Run string lines between the pegs, top and bottom. Be sure the top string line shows the top height of your RIDGI. Use a spirit level to make sure everything is level.
- Start from one end and mark a cross on the ground at 1520mm intervals (this is where your holes will go).



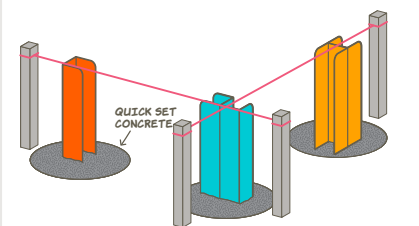
3 DIG YOUR HOLES

- At the marked spots, dig or auger your holes with a 300mm diameter. Remember - your holes have to be as deep as your RIDGI is tall to make sure it's strong!
- If you're installing RIDGI Fence Brackets, mark and drill your mounting holes for your bolts now.



4 SET THE POSTS

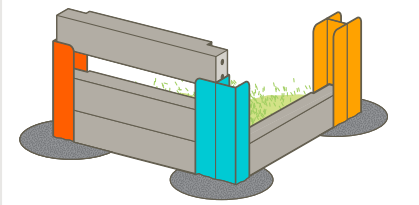
- Work with one hole at a time.
- Fill the hole with quick setting concrete and lower your RIDGI Retaining Post into it, ensuring it is straight and level with top string line.
- Set corner posts first and recheck post intervals before setting ender or joiner posts.



5 INSERT YOUR SLEEPERS

- Allow the post hole concrete to cure for 2 days before bolting* on your RIDGI Fence Brackets and sliding your RIDGI Reinforced Sleepers into place.
- If your ground is not level before you slide in the sleepers, consider laying a concrete pad between posts to ensure that sleepers are stacked up evenly.

*Bolts not included.



6 AG PIPE & BACKFILL

- Place 65mm ag pipe at the base of the back of the wall, then backfill with 20mm drainage gravel to 200mm from top of the wall.
- Fill to the top with a clay soil plug.

