

**4in1**

# TIMBERMATE®

Non-acrylic  
Water-based Woodfiller



**Wood Putty**

**Grain Filler**

**Edge Filler**

**Crack Filler**



- UNLIMITED SHELF LIFE
- NO WASTE
- NON CRACKING
- WON'T FALL OUT
- NON SINKING
- NON SHRINKING
- NON FLAMMABLE

# COMPARE THE DIFFERENCE!

TIMBERMATE		OTHER TIMBER FILLERS
WATER BASED	TIMBERMATE's secret ingredient is TAP WATER and contains NO acrylic, NO latex or harmful ingredients.	Contain either latex or acrylic.
MANY PRODUCTS IN ONE	TIMBERMATE is a: Wood Putty, Grain Filler, Edge Filler, Crack Filler and a Sanding Sealer all in one!	Require you to buy additional products for different jobs.
NO WASTE - INDEFINITE SHELF LIFE	If TIMBERMATE dries out or gets hard, just add a few drops of warm water and soften.	Have to be discarded when they dry out.
WON'T SHRINK, SINK, CRACK OR FALL OUT	TIMBERMATE is manufactured to a unique formula to give a great result, not just immediately, but for years to come.	Often disappoint, particularly over time.
DRYING TIME: 60 SECONDS TO 30 MINUTES	Because TIMBERMATE is non-flammable, it can be force dried with a heat gun. Depth of fill determines drying time.	Have to dry over time, often holding up the job.
SANDS EASILY AND DUST IS RE-USABLE	TIMBERMATE is easily sanded and the dust can be collected and reused by simply adding water.	Not possible with acrylic or latex based products.
ACCEPTS ALL STAINS, COATS AND COLOURS	TIMBERMATE is compatible with all types of stains including water, oil or spirit plus paint and vegetable colours. Takes on the exact colour. Accepts all top coats - acid catalysed lacquers, epoxies, water based paints and polyurethane. Add stain to putty or apply when putty is dry. Wet colour is same as finished colour.	Many restrictions with colouring agents and products never exact as they dry differently.
COMES IN COST-SAVING TUBS, NOT TUBES	If you take too much putty out of a TIMBERMATE tub, just put it back for use next time.	You can't put any unused putty back into a tube which means wastage.
WON'T BLIND THE GRAIN	TIMBERMATE fills and seals but will not blind the grain.	Hard to sand and covers the grain.
BIG, BIG SAVINGS	Compare the price of our TIMBERMATE range of tub sizes. Giving you best value per stain.	Most tube grades are MUCH MORE expensive, can't be reconstituted with water and are only sold in small packs.
HOT & COLD USE	TIMBERMATE won't burn and if the tub freezes, it can be thawed. Freeze-thaw stable.	Will burn and cannot be reconstituted.
COLOUR RANGE	15 colours to choose from to give you an excellent match.	Usually a poor range of colours.
TIME TESTED	The TIMBERMATE has been selling for over 50 years - your assurance of time-tested quality.	Most are an unknown quantity over a long period of time.



Manufactured by Timbermate Products Pty Ltd

Phone **(03) 9873 4811** or call  
Toll Free **1800 354 811** (Except Mobiles)

# SO EASY WITH TIMBERMATE

## FILLING KNOT/NAIL HOLES



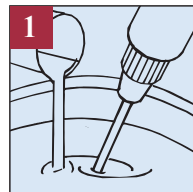
**1. APPLY:**  
Using a plastic or high quality stainless steel putty knife, apply TIMBERMATE directly out of the tub prior to sanding or first coat. (NOTE: If filler turns black, the putty knife is not high content stainless steel; however, the black will sand off.)

## TROWEL FILLING

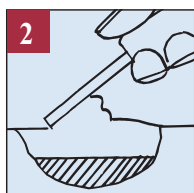


**1. MIX:**  
Match the color to the wood. Mix TIMBERMATE in the tub with warm water (a mixer attached to a heavy duty drill is ideal). Slowly pour the water in as you mix – usually about 15% water by weight. Mix until TIMBERMATE has the consistency of toothpaste.

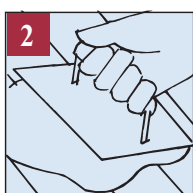
## GRAIN FILLING



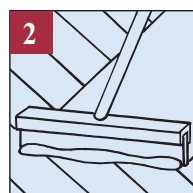
**1. MIX:**  
Match the color to the timber. Mix TIMBERMATE in the tub with warm water (a mixer attached to a heavy duty drill is ideal). Slowly pour the water in as you mix – TIMBERMATE should have the consistency of thick paint. Allow TIMBERMATE mixture to dry to the consistency of toothpaste before sealing tub.



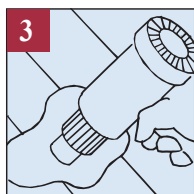
**2. FILL:**  
If hole is greater than 6mm, fill by layering TIMBERMATE in 6mm increments.



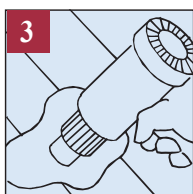
**2. APPLY:**  
Apply TIMBERMATE, with a plastic trowel, or rubber float across the grain over the entire timber. Make sure the filler is forced into deep voids. Do not apply TIMBERMATE too heavily – a small amount goes a long way. Remove all excess TIMBERMATE. (Return excess to the TIMBERMATE container - no waste.)



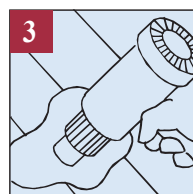
**2. APPLY:**  
Apply TIMBERMATE to the timber and squeegee it or rub across the grain over the entire job. Do not apply TIMBERMATE too heavily – a small amount goes a long way. Remove all excess TIMBERMATE (return excess to the TIMBERMATE container - no waste).



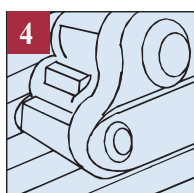
**3. DRY:**  
Let TIMBERMATE dry thoroughly or use heat gun or similar to speed drying. TIMBERMATE is properly dry if it sands to the consistency of baby powder.) Drying time depends on depth of fill.



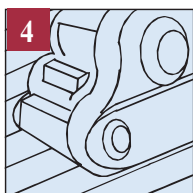
**3. DRY:**  
Let TIMBERMATE dry thoroughly or use heat gun or similar to speed drying. TIMBERMATE is properly dry if it sands to the consistency of baby powder.) Drying time depends on depth of fill.



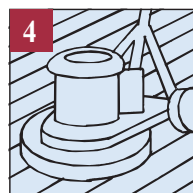
**3. DRY:**  
Let TIMBERMATE dry thoroughly or use heat gun or similar to speed drying. TIMBERMATE is properly dry if it sands to the consistency of baby powder.) Drying time depends on depth of fill.



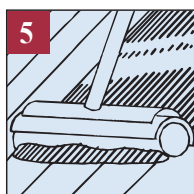
**4. SAND:**  
Final sand and remove all dust and debris. (NOTE: Do not use a grit coarser than 120.)



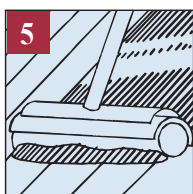
**4. SAND:**  
Final sand and remove all dust and debris. (If grain filling do not use a grit coarser than 120.)



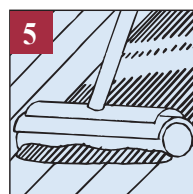
**4. SAND:**  
Final hard plate or screen and remove all dust and debris. (NOTE: Do not use a grit coarser than 120.)



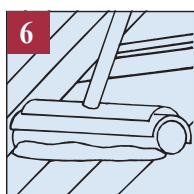
**5. STAIN:**  
Apply stain to the timber (if staining). Do not rub the stain in with an aggressive action. Doing so will remove TIMBERMATE. Filler must be dry before staining.



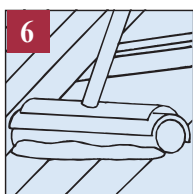
**5. STAIN:**  
Apply stain to the timber (if staining). Do not rub the stain in with an aggressive action. Doing so will remove TIMBERMATE. Filler must be dry before staining.



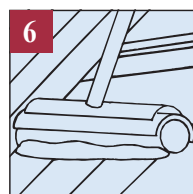
**5. STAIN:**  
Apply stain to the timber (if staining). Do not rub the stain in with an aggressive action. Doing so will remove TIMBERMATE. Filler must be dry before staining.



**6. FINISH COAT:**  
Apply any final finish coat. Filler must be dry.



**6. FINISH COAT:**  
Apply any final finish coat. Filler must be dry.












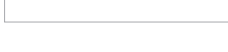


**6. FINISH COAT:**  
Apply any final finish coat. Filler must be dry.

## USE TIMBERMATE® FOR:

		WOODPUTTY	GRAINFILLER	CRACKFILLER	EDGEFILLER	SANDING SEALER
<b>FURNITURE</b>	Solids - Softwood/Hardwood	✓	✓	✓	✓	✓
	Veneers	✓	✓	✓	✓	✓
<b>PANELLING</b>	Internal	✓	✓	✓	✓	✓
	External	✗	✗	✗	✗	✗
<b>FLOORS</b>	Timber	✓	✓	✓		✓
	Cork	✓	✓	✓		
	Parquetry	✓	✓	✓		✓
<b>TIMBER</b>	Architraves/Skirtings	✓	✓	✓	✓	✓
	Nail holes	✓	✓	✓	✓	✓
	Cracks	✓	✓	✓	✓	✓
	Rebuilding	✓	✓	✓	✓	✓
	Woodturning	✓	✓	✓	✓	✓
	Internal External	✓ ✗	✓ ✗	✓ ✗	✓ ✗	✓ ✗
<b>MDF CRAFTWOOD</b>		✓	✓	✓	✓	✓
<b>PLASTERBOARD</b>		✓		✓		
<b>NOTE</b>	<ol style="list-style-type: none"> <li>All types of stains, coatings &amp; finishes can be used with TIMBERMATE®</li> <li>Use for all types of interior work. ✗ = Not recommended for exterior work. (See Porion for external use)</li> <li>Blank spaces - not usually used</li> </ol>					

## COLOURS

	BRUSH BOX
	CEDAR (Blackwood)
	EBONY
	HARDWOOD (Ash/Tas Oak)
	JARRAH
	MAHOGANY (Meranti)
	MAPLE
	NATURAL (Tint Base)
	TAS OAK
	PINE
	RIMU (Baltic Pine/Oregon)
	TEAK (Cypress)
	WALNUT
	WHITE

Colours shown are a guide only.

## HANDY TIPS FOR THE PERFECT JOB

- Dry with a heat gun or lamp to save drying time.
- Different depths and timbers have different drying times.
- Just wash hands or tools with water to clean up.
- Use on metal, plastic, fibreglass and in foundries.
- Mix in colour prior to applying or apply stain when dry.
- Final colour after coating will be as you see when wet.
- **TIMBERMATE** is ready to sand when colour fades, does not blind sandpaper or sands off like baby powder
- In cold weather, if **TIMBERMATE** hardens, place in sun or stand in tub of hot water to soften.
- Thinning with a little hot water provides best results.
- To fill larger holes, fill in layers of 6mm at time, allowing drying between each layer.
- Use a plastic spatula for best results.

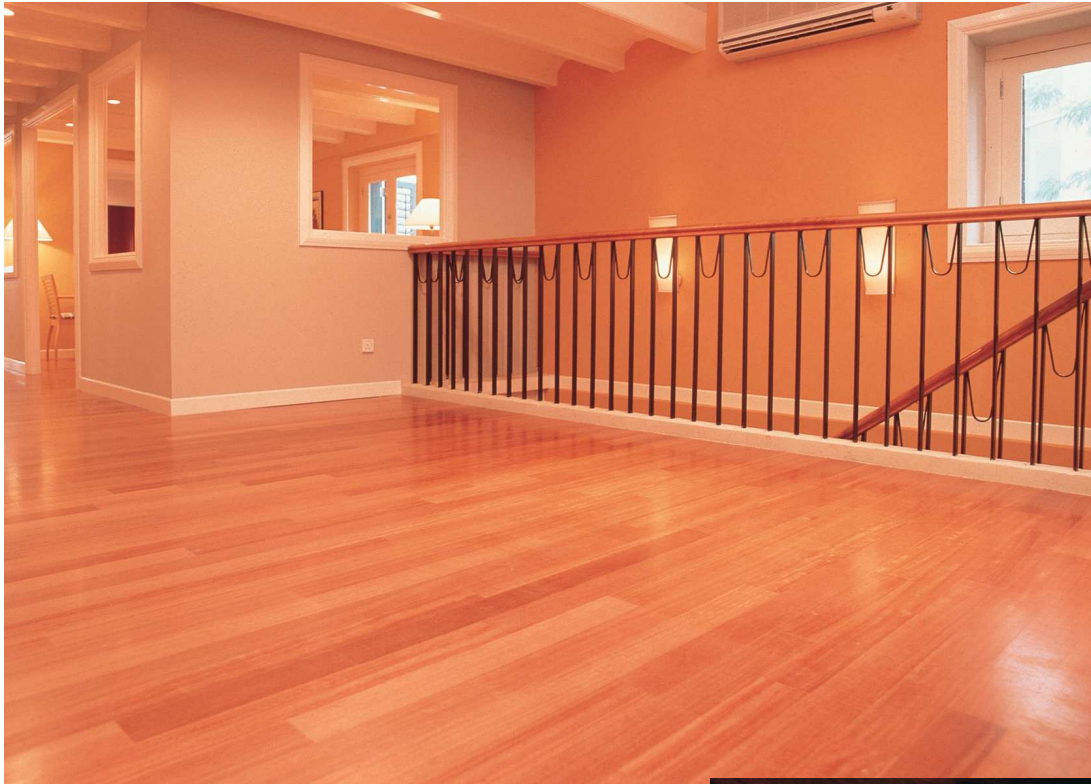
## KEEP WAXSTIX ON HAND

**TIMBERMATE** carry a wide range of coloured wax sticks to repair scratches on timber surfaces. Keep selected colours on hand to keep your timber looking like new.



No beeswax! Which means this synthetic wax will accept coatings.

# USE TIMBERMATE FOR ALL IMPERFECTIONS



Excellent for Commercial & Domestic Applications



Grain Filling



Frames and Furniture

Knots in all types of timbers



Wood Veneering and Edge Filling

## PRODUCT CODES & BARCODE NUMBERS

	250gram	500gram	2kg	8kg	20kg
Brush Box	TBB25 9315284142508	TBB5 9315284145004	TBB2 9315284213000	TBB8 9315284008132	TBB20 9315284020134
Cedar (Blackwood)	TC25 9315284092506	TC5 9315284095002	TC2 9315284092001	TC8 9315284008019	TC20 9315284020028
Ebony	TE25 9315284152507	TE5 9315284165002	TE2 9315284220008	TE8 9315284008231	TE20 9315284020233
Hardwood (Ash/Tas Oak)	TH25 9315284122500	TH5 9315284125006	TH2 9315284122005	TH8 9315284008026	TH20 9315284020035
Jarrah	TJ25 9315284002505	TJ5 9315284005001	TJ2 9315284002000	TJ8 9315284008033	TJ20 9315284020042
Mahogany (Meranti)	TM25 9315284012504	TM5 9315284015000	TM2 9315284012009	TM8 9315284008040	TM20 9315284020059
Maple	TMA25 9315284022503	TMA5 9315284025009	TMA2 9315284022008	TMA8 9315284008057	TMA20 9315284020066
Natural (Tint Base)	TN25 9315284032502	TN5 9315284035008	TN2 9315284032007	TN8 9315284008064	TN20 9315284020073
Oak	TO25 9315284042501	TO5 9315284045007	TO2 9315284042006	TO8 9315284008071	TO20 9315284020080
Pine	TP25 9315284052500	TP5 9315284055006	TP2 9315284052005	TP8 9315284008088	TP20 9315284020097
Rimu (Baltic Pine/Oregon)	TR25 9315284112501	TR5 9315284115007	TR2 9315284212003	TR8 9315284008095	TR20 9315284020103
Teak (Cypress)	TT25 9315284062509	TT5 9315284065005	TT2 9315284062004	TT8 9315284008101	TT20 9315284022002
Walnut	TW25 9315284072508	TW5 9315284075004	TW2 9315284072003	TW8 9315284008118	TW20 9315284020110
White	TWH25 9315284082507	TWH5 9315284085003	TWH2 9315284082002	TWH8 9315284008125	TWH20 9315284020127
Quantity Per Carton	24	24	6	1	1
Quantity Per Pallet	2880	1400	360	125	48