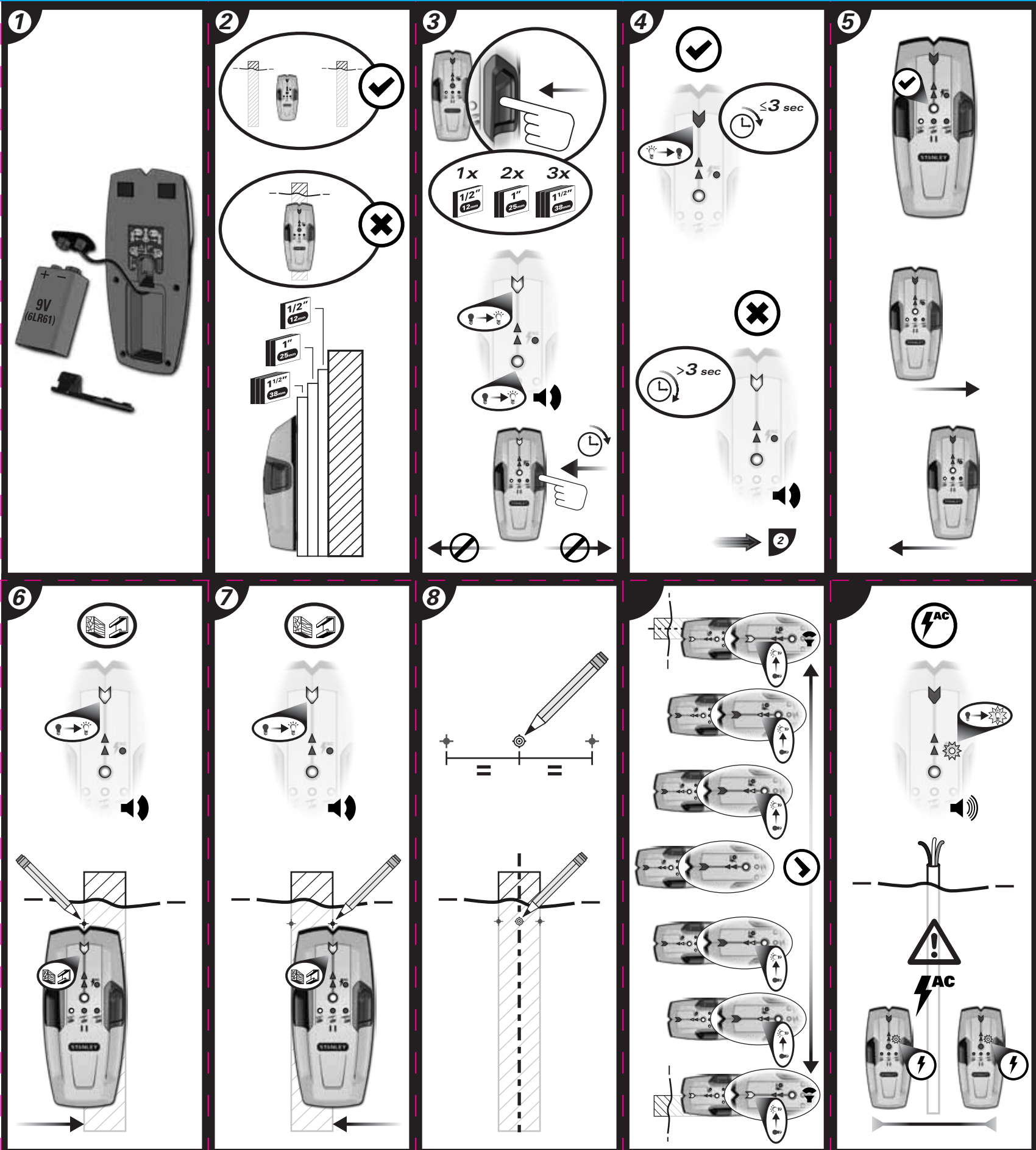


STANLEY
S150



STANLEY

© 2014 STANLEY Tools
701 East Joppa Road
Towson, Maryland 21286
www.STANLEYTOOLS.com
© 2014 The Stanley Black & Decker
Egglewischstraat 144-16
2800 Mechelen, Belgium
www.stanleytools.com
79003244
AUGUST 2014



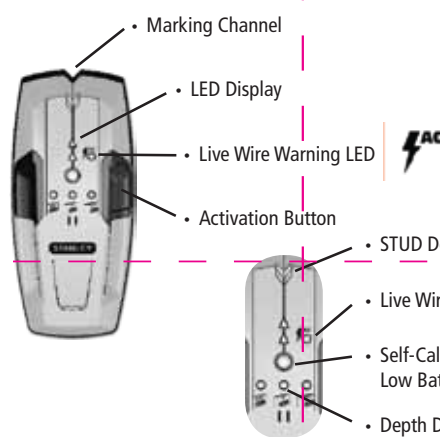
STANLEY
S150



Stanley Stud Sensor 150

The Stud Sensor 150 uses electronic signals to locate the edges of studs, joists or live AC wires through drywall or other common building materials. Depth detection selected by activation button for 1/2 inch, 1 inch and 1-1/2 inch. Once the edge of a stud has been detected, the Stud Sensor 150 displays red LED's and sounds an audible tone. A marking channel allows you to easily note the stud edges on the wall.

Note: Read all instructions prior to operating the Stud Sensor 150 and DO NOT remove any labels from the tool.



OPERATING INSTRUCTIONS

Battery

1 Open door on back of unit and connect a 9 volt battery Alkaline Type 6LR61 (not included) to clip. Put battery back into case and close back battery door.

Note: Recommend to replace a new 9 volt battery when low battery - flashing green LED.

Usage

Detecting Wood / Metal Studs

2 Hold the Stud Sensor 150 flat against the surface, making firm contact.

Selecting Scanner Depth Mode

Depress and hold activation button once (1x) to select to 1/2" (12mm) read depth detection. The 1/2" (12mm) mode LED will illuminate. Double click (depress two times - 2x) and hold activation to select to 1" (25mm) read depth detection. The 1" (25mm) mode LED will illuminate. Triple click (depress three times - 3x) and hold activation button to select 1-1/2" (38mm) read depth detection. The 1-1/2" (38mm) mode LED will illuminate.

Note: For best results the depth mode selected should be based on the thickness of the surface material being scanned.

3 The green and top red LED will light.

Note: The unit cannot be moved before calibration is complete.

4 When the red LED goes off, the unit is calibrated. If the red LED stays lit, move the Stud Sensor 150 to a different location and try again. Releasing the activation button will turn off the sensor.

5 Keep holding the activation button during all of the following procedures. Slide the Stud Sensor 150 slowly across the surface in a straight line. As it detects a stud, the red LED's will go on.

Note: Once the Activation button is released, the unit shuts off. While calibrating, the Stud Sensor 150 must not be placed directly over a stud, dense material such as metal, or over a wet or newly painted area, or it will not properly calibrate.

6 When it detects the stud edge, the top LED will go on and an audible tone will sound. Use the marking channel located at the top of the unit to mark the stud edge.

7 Repeat the above steps from the other side of the stud. Coming from the opposite direction, mark the other edge of the stud.

8 The midpoint of the two marks indicates the stud center.

Detecting Live AC Wires

The live wire red LED will illuminate and the Stud Sensor 150 sounds an audible tone, warning when in the proximity (typically within 4" to 18" or 101mm to 457mm along the surface) from a live wire.

Warning! This tool is not a measuring device and should not be used as a substitute for a voltmeter.

Warning! The LED or Live Wire Detection symbol on the display are just indicators and in some situations the voltage detection option may not accurately indicate the presence of voltage in the event of internal device failure or improper operation, and therefore should not be relied upon for identification of the presence of hazardous voltages. Other evidence such as construction blueprints or visual identification of wiring or conduit entry points should also be utilized.

Always turn off AC power when working near wiring. Always follow proper safety practices and use a separate detection method to verify a de-energized condition prior to commencing work.

Note: Static electrical charges that can develop on drywall and other surfaces will spread the voltage detection area many inches on each side of the actual electrical wire. To aid in locating the wire position, scan holding the unit 1/2" (12mm) away from the wall surface or place your other hand on the surface approximately 12" (304mm) from sensor.

Warning: Shielded wires or wires in metal conduits, casings, metallized walls or thick, dense walls will not be detected. Always turn off AC power when working near wiring.

Cautions on Operating

You should always use caution when nailing, cutting and drilling in walls, ceilings and floor that may contain wiring and pipes near the surface. Always remember that studs or joists are normally spaced 16" or 24" (406mm or 609mm) apart and are 1 1/2" (38mm) in width. To avoid surprises, be aware that anything closer together or of a different width may not be a stud.

OPERATING TIPS

The Stud Sensor 150 is designed for use only on interior surfaces.

Prevent Interference

To ensure best performance from the Stud Sensor 150, keep your free hand at least 6 inches away from the unit and wall surface while testing or scanning surfaces.

Conventional Construction

Doors and windows are commonly constructed with additional studs and headers for added stability. The Stud Sensor 150 detects the edge of these

double studs and solid headers as a single, wide stud.

Surface Differences

The Stud Sensor 150 will scan through common building materials, including:

- Gypsum drywall
 - Plywood sheathing
 - Linoleum over wood
 - Wallpaper
- The sensor cannot scan through:
- Carpeting
 - Foil faced materials
 - Ceramic tile
 - Cement or concrete
 - Metal & plaster walls

Wallpaper

There will be no difference in the function of the Stud Sensor 150 on surfaces covered with wallpaper or fabric unless the coverings used contain metallic foil or fibers.

Ceilings

When dealing with a rough surface such as a sprayed ceiling, utilize a piece of cardboard when scanning the surface. Run through the calibration technique described earlier with the piece of cardboard too, to assure best performance of the unit. Also, it is particularly important in this application to remember to keep your free hand away from the unit.

Note: The thickness, density and moisture content of the surface material will affect the sensing depth.

IMPORTANT SAFETY NOTICE

Insure proper detection of live wires. Always hold the Stud Sensor 150 in the handle area only. Grasp between fingers and thumb while making contact with your palm.

SPECIFICATIONS

(At 35-55% relative humidity)

Battery 9 volt Alkaline Type 6LR61 (not included)

Depth Range

Wood or Metal Studs - Up to 1-1/2" (38 mm) through drywall

Live AC Wires (240 volts AC) Up to 2" (50 mm) through drywall

Accuracy - Stud Center (Scanning and marking the stud from two sides stud center)

Wood ±1/8" (3 mm)

Metal ±1/4" (6 mm)

Operating Temperature +32°F to +120°F (-0°C to +49°C)

Surface Temperature -4°F to +150°F (-20°C to +66°C)

WARRANTY

Stanley Tools warrants the Stud Sensor 150 against defects in material and workmanship for one year from the date of purchase. Stanley's liability under this warranty is limited to the replacement of the unit. Any attempt to repair the product by other than factory authorized personnel will void this warranty. Calibration, batteries and maintenance are the responsibility of the user. Where permitted by law, Stanley is not responsible for incidental or consequential damages. Agents of Stanley cannot change this warranty. Stanley is not responsible for damage resulting from wear, abuse or alteration of this product. The user is expected to follow ALL operating instructions. This warranty may provide you with additional rights that vary by state, province or nation.

For Australia :

Our goods come with guarantees that cannot be excluded under the Australian Consumer Law. You are entitled to a replacement or refund for a major failure and compensation for any other reasonably foreseeable loss or damage. You are also entitled to have the goods repaired or replaced if the goods fail to be of acceptable quality and the failure does not amount to a major failure.

How to make a warranty claim:

Products subject to a warranty claim should be returned to the place of purchase for assessment by a Stanley Black & Decker Australia distributor or representative. You are responsible for returning the product to the place of purchase. You must present proof of purchase when making a warranty claim.

Any warranty related enquiries or claims may be directed to Stanley Black & Decker (Australia) Pty Ltd
82 Taryn Drive, Epping, VIC 3076 Australia
Tel. 1800 338 002 (Aust) or Tel. 0800 339 258 (NZ)