

RYOBI®

RBV2540N

ORIGINAL INSTRUCTIONS

Blower/Vacuum



Important!

It is essential that you read the instructions in this manual before assembling, operating, and maintaining the product.

Subject to technical modification.

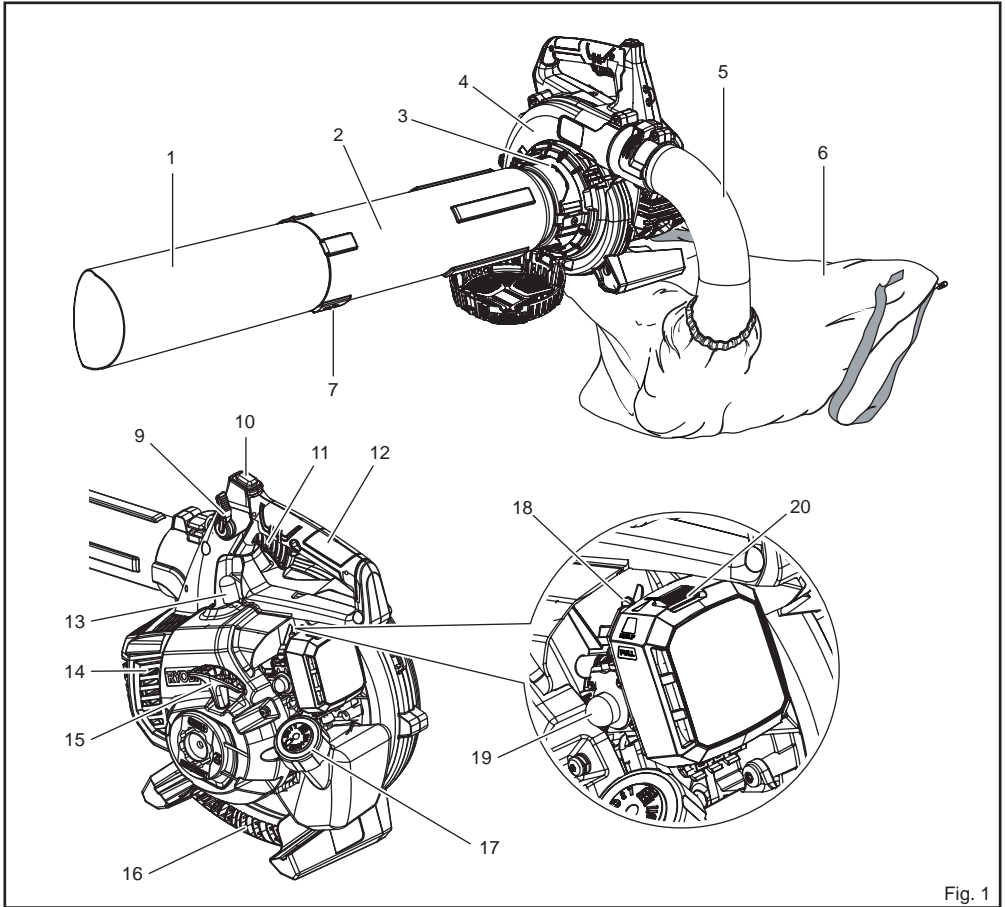


Fig. 1

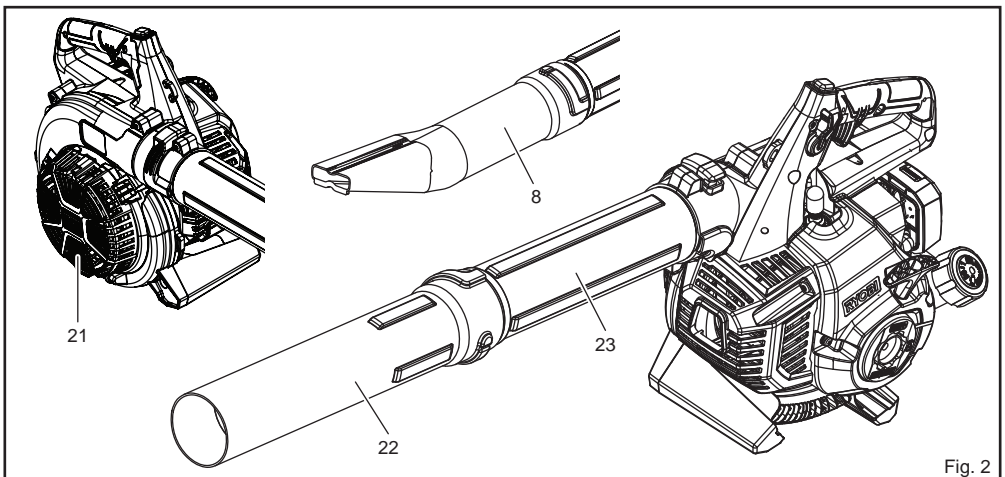


Fig. 2

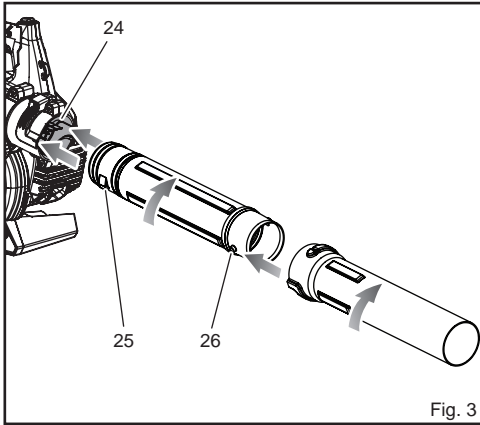


Fig. 3

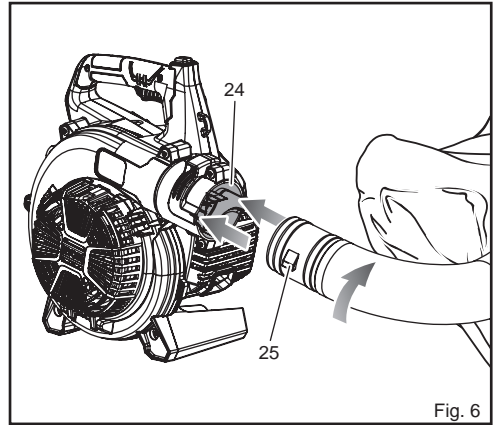


Fig. 6

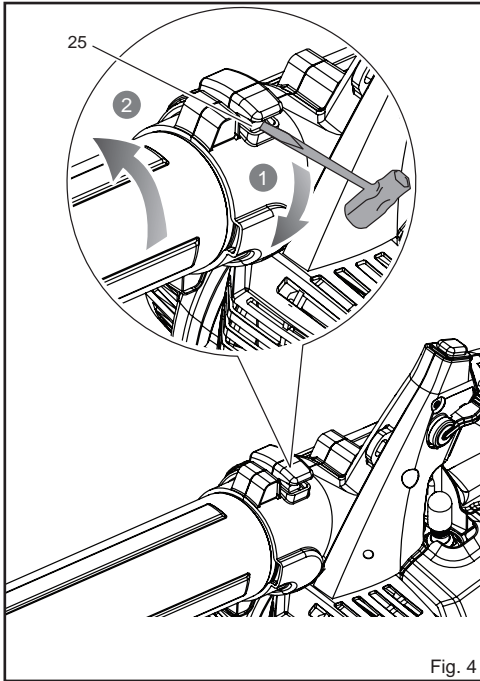


Fig. 4

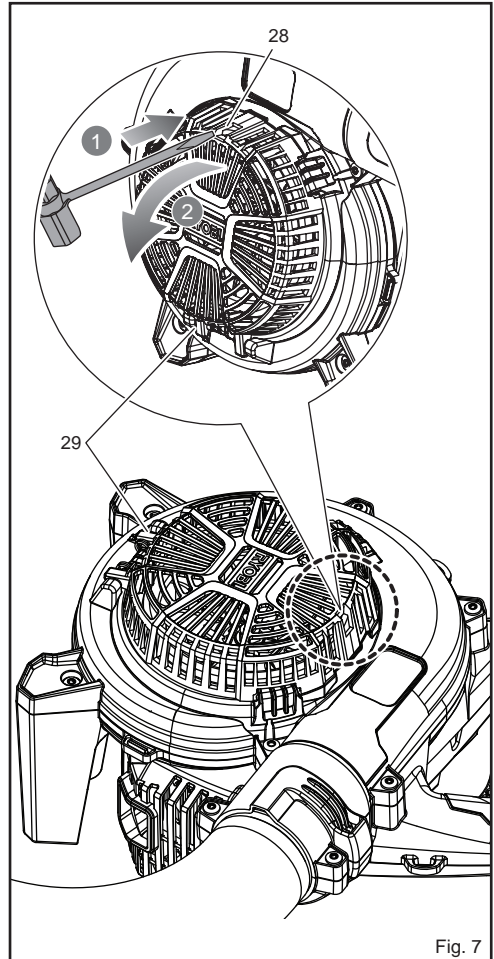


Fig. 7

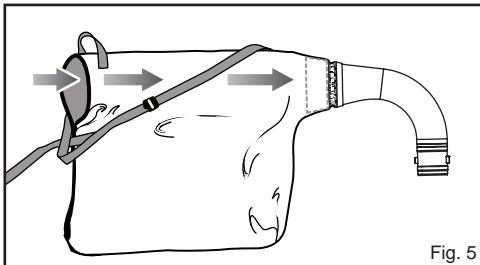
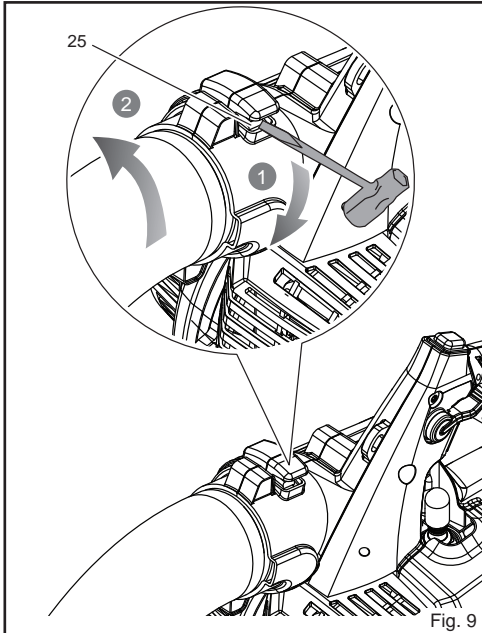
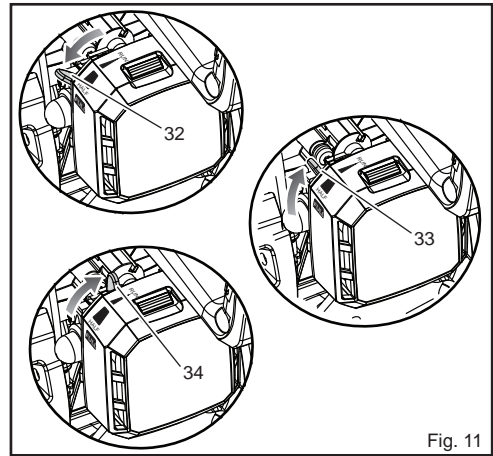
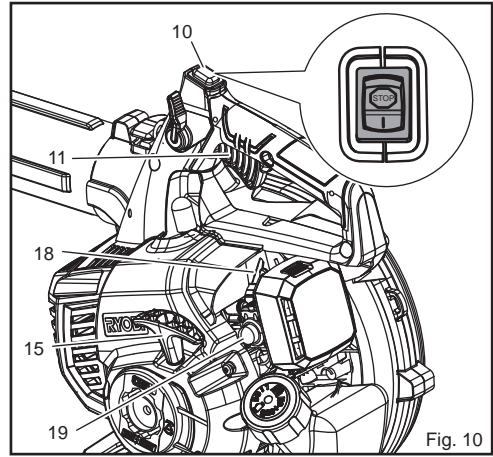
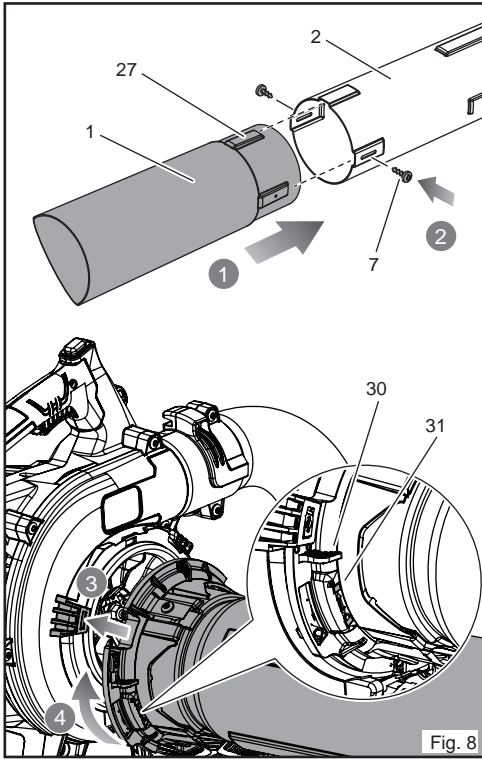


Fig. 5



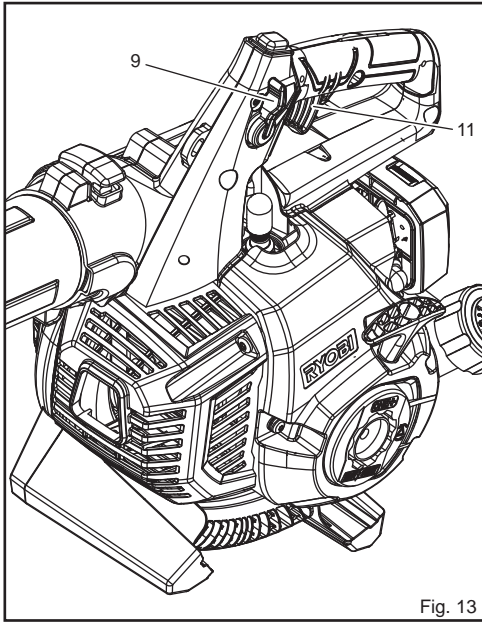


Fig. 13

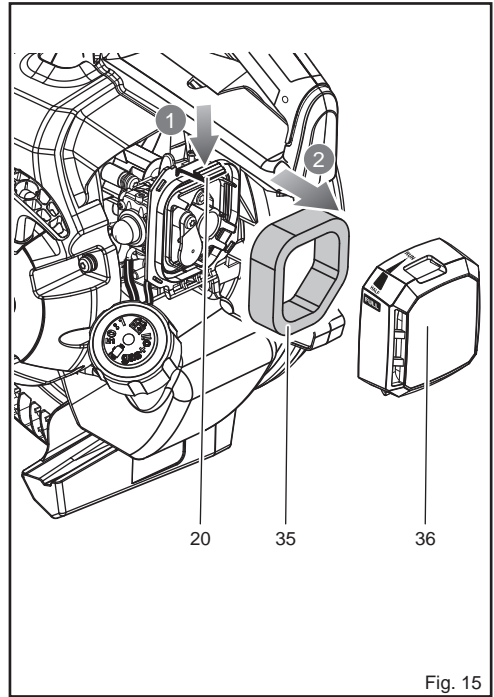


Fig. 15

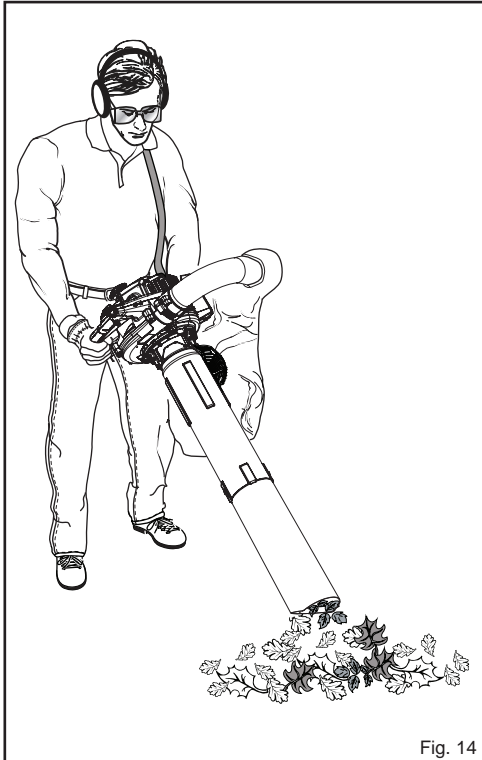


Fig. 14

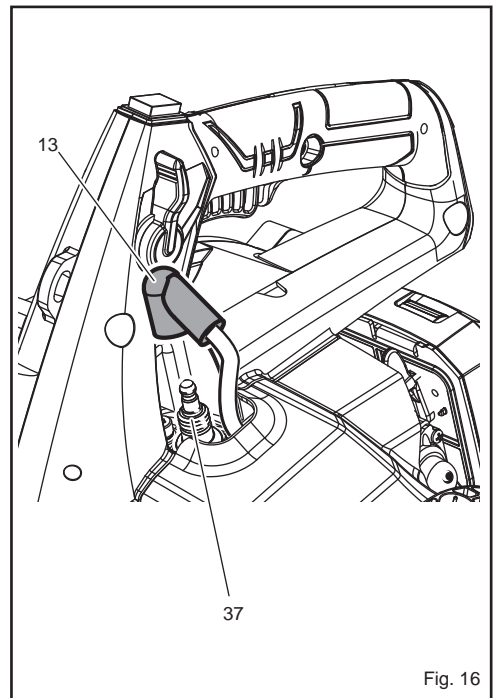


Fig. 16

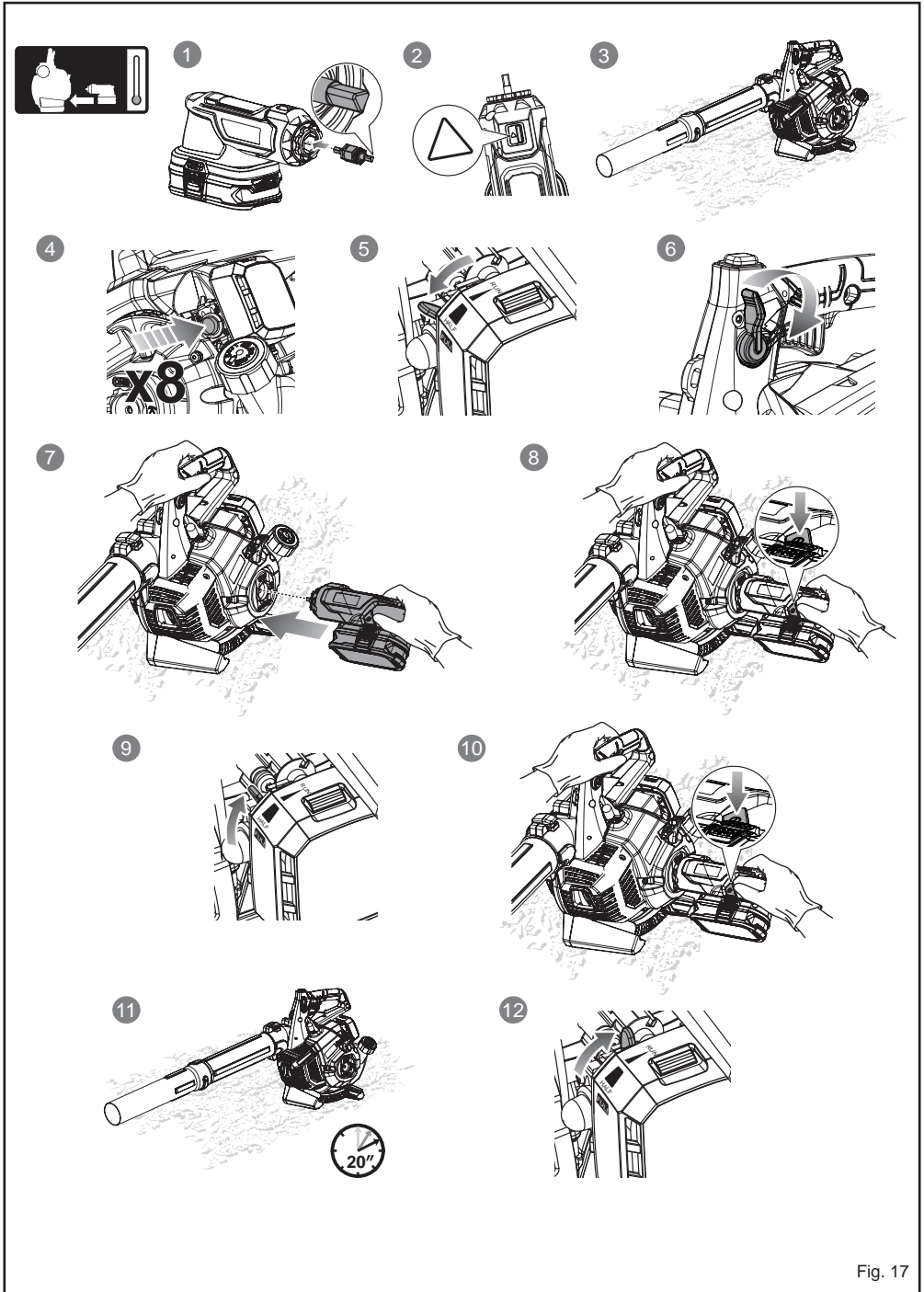
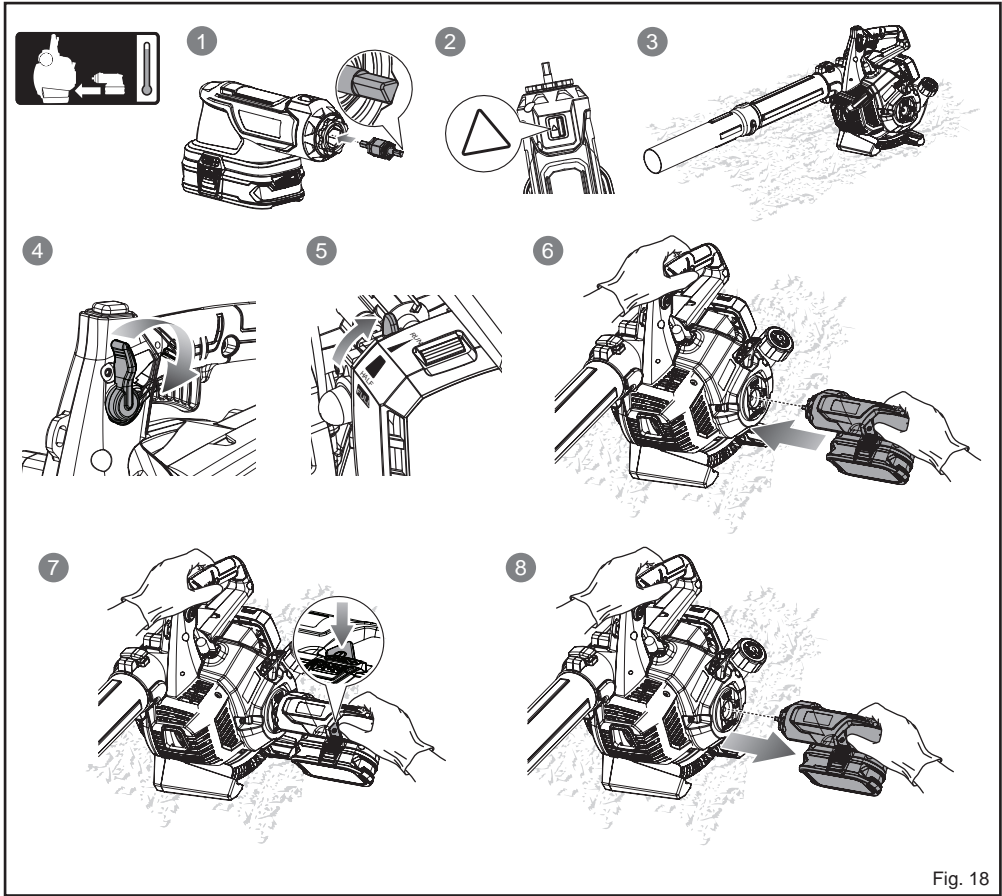


Fig. 17



Safety, performance, and dependability have been given top priority in the design of your petrol blower/vacuum.

INTENDED USE

The product is only intended for use outdoors.

The product is not intended to be used by children or persons with reduced physical, mental, or sensory capabilities.

The product is intended for blowing a jet of air to move light debris including leaves, grass, and other debris including waste paper. You may use the product in driveways and walkways.

It is intended to vacuum debris as mentioned above and deposit it into the collection bag. It is not designed to suck or vacuum water or other liquid.

Do not use the product in any way other than those stated.

WARNING

When using the product, the safety rules must be followed. For your own safety and that of bystanders, please read these instructions before operating the product. Please keep the instruction safe for later use.

WARNING

Never allow children or people with reduced physical, sensory or mental capabilities to operate, clean, or maintain the product. Local regulations may restrict the age of the operator.

GENERAL SAFETY WARNINGS

- Some regions have regulations that restrict the use of the product. Check with your local authority for advice.
- Do not allow children or untrained individuals to use the product.
- Ensure before each use that all controls and safety devices function correctly. Do not use the product if the off switch does not stop the engine.
- Never start or run the engine in a closed or poorly ventilated area; breathing exhaust fumes can kill.
- Clear the work area before each use. Remove all objects such as rocks, broken glass, nails, wire, or string that can be blown a considerable distance by high velocity air.
- Wear full eye and hearing protection while operating the product. The product is extremely noisy, and permanent hearing injury may result if precautions to limit exposure, reduce noise, and wear hearing protection are not strictly adhered to.
- Wear heavy long trousers, boots, and gloves. Do not wear loose fitting clothing, short trousers, jewellery of any kind, or use with bare feet.
- Secure long hair so it is above shoulder level to prevent entanglement in moving parts.
- Beware of thrown objects; keep all bystanders, children, and pets at least 15 m away from the work area.

- Operate the product only at reasonable hours – not early in the morning or late at night when people might be disturbed.
- Use rakes and brooms to loosen debris before blowing/vacuuming.
- Never operate the product in an explosive atmosphere.
- Do not use this product when you are tired, ill, or under the influence of alcohol, drugs, or medication.
- Do not operate the product in poor lighting. The operator requires a clear view of the work area to identify potential hazards.
- Use of hearing protection reduces the ability to hear warnings (shouts or alarms). The operator must pay extra attention to what is going on in the working area.
- Only use enough throttle (power) to complete the task, this will reduce the potential for injury caused by noise and vibration.
- Operating similar tools nearby increases both the risk of hearing injury and the potential for other persons to enter your working area.
- Keep firm footing and balance. Do not overreach. Overreaching can result in loss of balance or exposure to hot surfaces.
- Keep all parts of your body away from any moving part. Rotating impeller blades can cause severe injury. Stop the engine and ensure impeller blades have stopped rotating before opening the vacuum door, installing/ changing tubes, and opening or removing the debris bag.
- Do not touch the area around the muffler or the engine of the product; these parts get very hot during operation.
- Inspect the product before each use. Check for loose fasteners, fuel leaks, etc. Make sure all guards and handles are properly and securely attached. Replace any damaged parts before use.
- Be aware of left-handed, threaded fasteners (when fitted).
- Never run the product without the proper equipment attached. When used as a blower, always install the blower tubes and close the door. When used as a vacuum, always install the vacuum tubes and vacuum bag.
- Do not modify the product in any way or use parts and accessories that are not recommended by the manufacturer.

WARNING

If the product is dropped, suffers heavy impact or begins to vibrate abnormally, immediately stop the product and inspect for damage or identify the cause of the vibration. Any damage should be properly repaired or replaced by an authorised service centre.

- Stop the engine and allow it to cool down before refuelling, storing, or transporting the product.
- For refuelling and fuel mixing, choose a well-ventilated area away from sources of ignition (sparks, flames etc.), and flammable materials.

- Do not smoke when mixing fuel or filling the fuel tank.
- Mix and store fuel in a container approved for fuel.
- Keep an appropriate type of fire extinguisher nearby for dealing with fuel fires.
- Remember to securely refit the fuel tank filler cap before starting the engine and check for fuel leaks
- Wipe up any fuel spillage. Move 9 m away from the refuelling site before starting the engine.
- To reduce the risk of injury associated with contacting rotating parts, always stop the engine, remove the spark plug wire, and make sure all moving parts have come to a stop before:
 - cleaning or clearing a blockage
 - leaving the product unattended
 - installing or removing attachments
 - checking, maintaining, or working on the product

WARNING

Your blower/vacuum may be supplied with a harness. Carefully adjust the harness to comfortably help to support the weight of the product and hang at your right-hand side.

WARNING

Identify the quick release mechanism and practice using it before you start using the product. Its correct use may prevent serious injury in the case of an emergency. Never wear additional clothing over the harness or otherwise restrict access to the quick release mechanism.

BLOWER SAFETY WARNINGS

- Wear a face filter mask in dusty conditions to reduce the risk of injury associated with the inhalation of dust.
- Do not point the blower nozzle in the direction of people or pets.
- Never place objects inside the blower tubes.
- Do not operate the product near open windows.
- Slightly dampen surfaces in dusty conditions.
- Use the full blower nozzle extension so the air stream can work close to the ground.
- Do not place blower on top of or near loose debris. Debris may be sucked into intake vent, resulting in possible damage to the product.

VACUUM SAFETY WARNINGS

- Do not operate vacuum without vacuum bag assembly installed; flying debris could cause serious injury. Make sure the vacuum bag is completely zipped closed before operating.
- Move the vacuum from side to side along the outer edge of debris. To avoid clogging, do not place the vacuum tube directly into the debris pile.
- Hold the engine higher than the inlet end of the vacuum tube.
- Always point the vacuum tube downhill when working

on a hillside.

- To avoid serious injury to the operator or damage to the product, do not try to vacuum up rocks, broken glass, bottles, or other similar objects.
- Avoid situations that could cause fire in the vacuum bag. Do not operate the product near an open flame. Do not vacuum up warm ash from fireplaces and barbecue pits. Do not vacuum up discarded cigars or cigarettes unless the cinders are completely cool.

RESIDUAL RISKS

Even when the product is used as prescribed, it is still impossible to completely eliminate certain residual risk factors. The following hazards may arise in use and the operator should pay special attention to avoid the following:

- Injury caused by vibration. Always use the right tool for the job. Use designated handles and restrict working time and exposure.
- Hearing damage caused by exposure to noise. Wear ear protection and limit exposure.
- Injury from flying objects from the blow tube airflow or vacuum exhaust if the bag is not fitted or damaged. Wear adequate eye protection at all times.

RISK REDUCTION

It has been reported that vibrations from handheld tools may contribute to a condition called Raynaud's Syndrome in certain individuals. Symptoms may include tingling, numbness, and blanching of the fingers, usually apparent upon exposure to cold. Hereditary factors, exposure to cold and dampness, diet, smoking and work practices are all thought to contribute to the development of these symptoms. There are measures that can be taken by the operator to possibly reduce the effects of vibration:

- Keep your body warm in cold weather. When operating the product wear gloves to keep the hands and wrists warm. It is reported that cold weather is a major factor contributing to Raynaud's Syndrome.
- After each period of operation, exercise to increase blood circulation.
- Take frequent work breaks. Limit the amount of exposure per day.

If you experience any of the symptoms of this condition, immediately discontinue use and see your doctor about these symptoms.

WARNING

Injuries may be caused, or aggravated, by prolonged use of a tool. When using any tool for prolonged periods, ensure you take regular breaks.

MAINTENANCE

WARNING

When servicing, use only identical parts. Use of any other parts may create a hazard or cause product damage.

⚠ WARNING

Always wear eye protection with side shields marked to comply with standards, along with hearing protection. Failure to do so could result in objects being thrown into your eyes and other possible serious injuries.

⚠ WARNING

Before inspecting, cleaning, or servicing the product, shut off engine, wait for all moving parts to stop, and disconnect spark plug wire and move it away from the spark plug. Failure to follow these instructions can result in serious personal injury or property damage.

⚠ WARNING

Do not at any time let brake fluids, petrol, petroleum-based products, penetrating lubricants, etc., come in contact with plastic parts. Chemicals can damage, weaken, or destroy plastic, which can result in serious personal injury.

- Avoid using solvents when cleaning plastic parts. Most plastics are susceptible to damage from various types of commercial solvents and may be damaged by their use. Use clean cloths to remove dirt, dust, lubricant, grease, etc.
- You can make adjustments and repairs described in this user manual. For other repairs, have the blower/vacuum serviced by an authorised service dealer.
- Check all nuts, bolts, and screws at frequent intervals for proper tightness to ensure the product is in safe working condition. Any part that is damaged should be properly repaired or replaced by an authorised service centre.

CLEANING THE AIR FILTER

See figure 15.

A wet or dirty air filter causes starting difficulty, loss of performance, and shorten the life span of the engine. The air filter should be checked and cleaned after 5 hours of operation. Inspect and clean more frequently if used in dusty dirty conditions.

For best performance, the air filter should be replaced every 25 hours or yearly.

To clean the air filter:

1. Press the air filter cover tab to open the air filter cover.
2. Remove the cover.
3. Lift the edge of the air filter carefully and peel it out.
4. Wash the air filter with warm, soapy water.
5. Rinse and squeeze to dry.
6. To reinstall the air filter cover, insert the tabs into the notches and lock into place.

NOTE: Make sure the filter is seated properly inside the cover. Installing the filter incorrectly will allow dirt to enter the engine, causing rapid engine wear.

CLEANING THE EXHAUST PORT, MUFFLER, AND SPARK ARRESTOR

NOTE: Depending on the type of fuel used, the type and amount of lubricant used, and/or your operating conditions, the exhaust port, muffler, and/or spark arrestor screen may become blocked with carbon deposits. If you notice a power loss with your petrol-powered product, you may need to remove these deposits to restore performance. We highly recommend that only qualified service technicians perform this service.

The spark arrestor must be cleaned or replaced every 50 hours or yearly to ensure proper performance of your product. Spark arrestors may be in different locations depending on the model purchased. Please contact your nearest service dealer for the location of the spark arrestor for your model.

⚠ WARNING

To avoid a fire hazard, never run the blower/vacuum without the spark arrestor in place.

VACUUM BAG

A dirty bag will reduce performance. To clean the bag, turn it inside out and shake. Wash the bag in soapy water at least once a year. To obtain a replacement bag, see your local Ryobi dealer. Visit the Ryobi website for your nearest location or call Ryobi customer service.

FUEL CAP

⚠ WARNING

A leaking fuel cap is a fire hazard and must be replaced immediately.

The fuel cap contains a sealing gasket and a check valve to allow air in. A clogged check valve will cause poor engine performance. If performance improves when the fuel cap is loosened, the check valve may be faulty. Replace fuel cap if required.

When refitting the fuel cap ensure it is not cross-threaded, otherwise it will leak.

FUEL FILTER

The fuel supplied to the engine is passed through a filter to remove any contaminants from entering the engine. Contaminants in the fuel can cause poor performance and damage to the engine.

The fuel filter is a non-serviceable item and, if needed, should be replaced by an authorised service centre.

SPARK PLUG REPLACEMENT

See figure 16.

The product's engine uses a Champion RCJ6Y spark plug. Replace with a recommended every 25 hours or annually.

1. Remove the spark plug boot.
2. Loosen the spark plug by turning it counter-clockwise with a socket.
3. Remove the spark plug.
4. Inspect the new spark plug. The spark plug must be

properly gapped and free of deposits in order to ensure proper engine operation. The correct gap is 0.025 in. (0.64 mm). To widen gap, if necessary, carefully bend the ground (top) electrode. To lessen gap, gently tap ground electrode on a hard surface.

5. Hand thread the new spark plug into the cylinder, turning it clockwise.
6. Tighten with a socket. Torque to 216 in.lb. (24.40 Nm) minimum, 264 in.lb. (29.82 Nm) maximum. Do not over-tighten.

WARNING

Be careful not to cross-thread the spark plug. Cross-threading will seriously damage the product.

TRANSPORTATION AND STORAGE

- Stop the engine and allow it to cool before storing or transporting.
- Clean all foreign material from the product.
- Drain all fuel from the tank into a container approved for petrol. Remember to properly replace and tighten the fuel cap.
- Run the engine until it stops. This will remove all fuel that could become stale and leave varnish and gum in the fuel system.
- Store the product in a cool, dry, and well-ventilated place that is inaccessible to children and well away from sources of ignition.
- Keep away from corrosive agents such as garden chemicals and de-icing salts.
- Do not store outdoors.
- When transporting the product in a vehicle, secure it against movement or falling to prevent injury to persons or damage to the product.
- Never carry or transport the product while the engine is running.
- Abide all government and local regulations for the safety storage and handling of petrol.

Short term storage (less than 1 month)

- Stop the engine, and allow it to cool before storing.
- Store the product in a cool, dry, and well-ventilated place that is inaccessible to children and well away from sources of ignition.
- Keep away from corrosive agents such as garden chemicals and de-icing salts.
- Do not store outdoors.

DESCRIPTION

See pages 1-4.

PARTS

1. Lower vacuum tube
2. Upper vacuum tube
3. Lock ring
4. Main housing
5. Vacuum bag adaptor
6. Leaf bag

7. Vacuum tube screw
8. Leaf nozzle
9. Throttle lock
10. Stop switch
11. Throttle trigger
12. Upper handle
13. Spark plug boot
14. Muffler
15. Starter grip and rope
16. Vacuum handle
17. Fuel cap
18. Choke lever
19. Primer bulb
20. Air filter base tab
21. Vacuum inlet door
22. Sweeper nozzle
23. Upper blower tube
24. Main housing outlet
25. Raised locking tab
26. Locking tab
27. Raised tab
28. Door tab
29. Vacuum door hinge
30. Unlock
31. Lock
32. Full choke
33. Half choke
34. Run position (no choke)
35. Air filter
36. Air filter cover
37. Spark plug

FEATURES

KNOW YOUR BLOWER/VACUUM

See figure 1-2.

The safe use of the product requires an understanding of the information on the product and in this operator's manual as well as knowledge of the project you are attempting to do. Before use of the product, familiarise yourself with all operating features and safety rules.

BLOWER TUBE AND SWEEPER NOZZLE (LEAF NOZZLE)

The blower tubes and sweeper nozzle (or leaf nozzle) can be assembled and installed on the main housing using no tools.

SWEEPER NOZZLE

The sweeper nozzle allows for more area to be covered during blower operation.

LEAF NOZZLE

The leaf nozzle allows for a higher air speed during blower operation.

ENGINE

The blower has a powerful 25,4 cc engine with sufficient power to handle tough blowing and vacuuming jobs.

MULCHER

The blower is equipped with a metal mulching blade that efficiently reduces leaves at a 10:1 ratio.

THROTTLE LOCK

The throttle lock feature allows the user to operate the blower without holding the throttle trigger. To slow the engine speed, push the throttle lock forward.

THROTTLE TRIGGER

The blower can be operated at any speed between idle and full throttle.

VACUUM/MULCHER

Converting the blower to a vacuum/mulcher is simple and can be done using a flat head screwdriver.

VACUUM BAG

The vacuum bag attaches to the main housing easily by using the vacuum bag adaptor.

VACUUM HANDLE

The vacuum handle allows user to perform vacuuming tasks comfortably.

VACUUM TUBES

The vacuum tubes can be installed on the main housing using a flat head screwdriver.

ASSEMBLY

UNPACKING

The product requires assembly.

- Carefully remove the product and any accessories from the box. Make sure that all items listed on the packing list are included.

⚠ WARNING

Do not use the product if any parts on the packing list are already assembled when you first open the box. The parts on the packing list are not assembled by the manufacturer and require customer installation. Use of a product that may have been improperly assembled could result in serious personal injury.

- Carefully inspect the product to make sure no breakage or damage occurred during shipping.
- Do not discard the packing material until you have carefully inspected and satisfactorily operated the product.
- If any parts are damaged or missing, please call your Ryobi service centre for assistance.

PACKING LIST

Blower

Upper blower tube

Sweeper nozzle

Leaf nozzle

Upper and lower vacuum tubes

Vacuum tube screws (2)

Vacuum bag assembly

Vacuum bag adaptor

2-cycle engine lubricant

Operator's manual

NOTE: Read and remove all hang tags and store with your operator's manual.

⚠ WARNING

If any parts are damaged or missing, do not operate the product until the parts are replaced. Use of the product with damaged or missing parts could result in serious personal injury.

⚠ WARNING

Do not attempt to modify the product or create accessories not recommended for use with the product. Any such alteration or modification is misuse and could result in a hazardous condition leading to possible serious personal injury.

⚠ WARNING

To prevent accidental starting that could cause serious personal injury, always disconnect the engine spark plug wire from the spark plug when assembling parts.

ASSEMBLING AND DISASSEMBLING THE UPPER BLOWER TUBE AND SWEEPER NOZZLE

See figure 3-4.

1. Align the raised locking tabs on the upper blower tube to the slots on the main housing outlet. Slide together and tighten securely by twisting. Check tightness after initial run and retighten if needed.
2. Secure the sweeper nozzle and upper blower tube together by aligning the raised locking tab on the upper blower tube with the raised slot on the sweeper nozzle.
3. To disassemble, raise the locking tab with a flat head screwdriver, rotate the tube and nozzle to unlock and remove from the main housing outlet.

INSTALLING THE VACUUM BAG

See figure 5-6.

1. Remove the sweeper nozzle (or leaf nozzle) and upper blower tube from the main housing by raising the locking tab with a flat head screwdriver, twisting and removing from the main housing outlet.
2. Unzip the vacuum bag and place the adaptor inside. Push the vacuum bag adaptor through the opening opposite the zipper. The wider end of the adaptor will remain on the inside of the vacuum bag when installed properly.
3. Align the raised tabs on the vacuum bag adaptor to the slots on the main housing outlet. Push the bag adaptor onto the housing. Twist to lock into place.

4. Rotate the vacuum bag until the shoulder strap is upright.
5. Make sure the vacuum bag is zipped and closed before starting the product.

REMOVING THE VACUUM BAG

1. Remove the vacuum bag adaptor by lifting the locking tab.
2. Rotate counter-clockwise to unlock the adaptor and remove.

INSTALLING THE VACUUM TUBES

See figure 7-9.

⚠ WARNING

Rotating impeller blades can cause severe injury. Always stop the engine and ensure that the impeller blades have stopped rotating before opening the vacuum door or installing/changing tubes. Do not put hands or any other object into the vacuum tubes that are installed on the product.

1. Secure the upper and lower vacuum tubes together by aligning the raised tabs with the raised slots.
2. Tap tube assembly on ground until the screw holes in lower tube are in the raised slot of the upper tube. Secure with supplied screws.
3. Depress door tabs using a flat head screwdriver and open vacuum inlet door.
4. Align the slots on the vacuum tube housing with the tabs on the main housing.
5. Turn the vacuum tube housing clockwise to the locked position and secure to the main housing.

REMOVING THE VACUUM TUBES

1. Using a screwdriver, depress the tab on the lock ring to unlock.
2. Turn the upper vacuum tube housing counter-clockwise.
3. Remove the vacuum tube assembly from the main housing.
4. Close the inlet cover door securely.

OPERATION

⚠ WARNING

Do not allow familiarity with tools to make you careless. Remember that a careless fraction of a second is sufficient to inflict serious injury.

⚠ WARNING

Always wear eye protection with side shields marked to comply with standards, along with hearing protection. Failure to do so could result in serious injuries such as objects being thrown into your eyes.

FUELLING AND REFUELLING

MIXING THE FUEL

The product is powered by a 2-stroke engine and requires premixing petrol and 2-stroke oil. The mixture should be at a 50:1 ratio.

NOTE: We recommend you use Ryobi synthetic 2-stroke lubricant. Only use a quality synthetic 2-stroke lubricant in the product to ensure top performance and engine longevity.

NOTE: If using similar containers for different fuels, label the container with its contents and the date it was added.

TO MIX THE FUEL:

- Pre-mix unleaded petrol and 2-stroke engine lubricant in a clean container approved for petrol.
- The engine of the product is certified to operate on unleaded petrol intended for automotive use with an octane rating of 91 or higher.
- Do not use any type of pre-mixed petrol/lubricant from fuel service stations; this includes the pre-mixed petrol/lubricant intended for use in mopeds, motorcycles, etc.
- Avoid using ethanol fuels or fuels containing ethanol. The use of ethanol fuels may result in damage to the engine of the product.
- Use only synthetic 2-stroke lubricant. Do not use automotive lubricant or 2-stroke outboard lubricant.
- Mix 2% synthetic 2-stroke lubricant into the petrol. This is a 50:1 ratio.
- Mix the fuel thoroughly and also each time before fuelling.
- Mix in small quantities. Do not mix quantities larger than usable in a 30-day period. A synthetic 2-stroke lubricant containing a fuel stabiliser is recommended.



1 L	+	20 mL	=	} 50:1 (2%)
2 L	+	40 mL	=	
3 L	+	60 mL	=	
4 L	+	80 mL	=	
5 L	+	100 mL	=	

FILLING THE TANK

⚠ WARNING

Petrol is extremely flammable and explosive. A fire or explosion from petrol will burn you and others. Always shut off engine before fuelling. Never add fuel to a machine with a running or hot engine. Move at least 9 m from refuelling site before starting engine. Do not smoke and stay away from open flames and sparks. Failure to safely handle fuel could result in serious personal injury.

1. Clean the surface around the fuel cap to prevent contamination.
2. Loosen the fuel cap slowly.
3. Pour the fuel mixture carefully into the tank.
4. Clean and inspect the fuel cap gasket before replacing the fuel cap.
5. Replace the fuel cap and tighten it. Do not cross thread

the fuel cap.

6. Wipe spilled fuel from the product.
7. Move at least 9 m away from refuelling area before starting the product.

NOTE: It is normal for smoke to be emitted from a new engine during first use.

⚠ WARNING

Check for fuel leaks. A leaking fuel cap is a fire hazard and must be replaced immediately. If you find any leaks, correct the problem before using the product. Failure to do so could result in a fire that could cause serious personal injury.

STARTING AND STOPPING

See figure 10-11.

To start a cold engine by hand

1. Lay the product on the ground.
2. Slowly press the primer bulb 8 times.
NOTE: After the 8th press, fuel should be visible in the primer bulb. If it is not, continue to press the primer until you see fuel in the bulb.
3. Place the choke lever in the "Full" position.
4. Pull throttle lock back to lock the throttle wide open.
5. Pull the starter grip and rope sharply until engine attempts to run. Do not pull the starter grip more than four times as the engine may become flooded with excess fuel.
6. Set the choke lever to "Half" position.
7. Pull the starter grip and rope until the engine runs. Do not pull the starter grip more than six times.
NOTE: If the engine does not start, return to the "Full" position and repeat steps 3 through 7. If the engine does not run after 6 attempts to start, please leave the product to sit for a few minutes before trying the starting procedure again.
8. Allow the engine to run for 20 seconds, then place the choke lever in the "Run" position.
NOTE: In cooler environments, additional pulls of the starter grip may be required with the choke lever in the "Full" position.

To start a warm engine by hand

1. Place the choke lever in the "Run" position.
2. Pull throttle lock back to lock the throttle wide open.
3. Pull the starter grip and rope until the engine runs. Do not pull the starter grip more than six times.
NOTE: If the engine does not start, repeat steps 3 through 7 in "To start a cold engine".

Starting the engine using an electrical starter (sold separately):

⚠ WARNING

Only use the Ryobi OES18 electrical starter. Use of any other starter may damage the engine and cause serious personal injury.

⚠ WARNING

Before using the electrical starter to start the product, please read and understand completely the operation manual of the OES18 electrical starter to avoid improper operation and serious personal injury.

To start a cold engine by electrical starter:

See figure 17.

1. Install the starter bit into the electrical starter with the triangle bit facing outside.
2. Push the F/R button to the right until the triangle symbol (Δ) shows on the F/R button.
3. Lay the product on the ground.
4. Press the primer bulb 8 times.
5. Set the choke lever to "Full" position.
6. Pull the throttle lock to keep the throttle wide open.
7. Hold the product with one hand and use your other hand to insert the starter drive shaft into the blower starter housing. Make sure the starter bit is properly engaged.
NOTE: The electrical starter is equipped with a safety interlock. Do not press and hold on the starter button when putting the electrical starter drive shaft into the blower starter housing. The starter will not start if the electrical starter is not properly engaged.
8. Press and hold the electrical starter switch button until the engine attempt to start. Do not press the electrical starter switch button for more than 4 seconds.
9. Set the choke lever to "Half" position.
10. Press and hold the electrical starter switch button until the engine starts. Do not press the electrical starter switch button for more than 4 seconds.
NOTE: If the engine does not start, repeat the procedure from step 5. Do not repeat the procedure more than 1 time. Please let engine sit for a few minutes before attempting to start again.
11. Allow the engine to warm up for 20 seconds prior to operation.
12. Set the choke lever to "Run" position.

To start a warm engine by electrical starter:

See figure 18.

1. Install the starter bit into the electrical starter with the triangle bit facing outside.
2. Push the F/R button to the right until the triangle symbol (Δ) shows on the F/R button.
3. Lay the product on the ground.
4. Set the choke lever to "Run" position.
5. Pull the throttle lock to keep the throttle wide open.
6. Hold the product with one hand and use your other hand to insert the starter drive shaft into the blower starter housing. Make sure the starter bit is properly engaged.
NOTE: The electrical starter is equipped with a safety interlock. Do not press and hold on the starter button when putting the electrical starter drive shaft into the blower starter housing. The starter will not start if the electrical starter is not properly engaged.
7. Press and hold the electrical starter switch button until the engine starts.
Note: If the engine does not start, repeat the procedure

from step 5. Do not repeat the procedure more than 1 time.

To stop the engine:

Toggle the stop switch to the STOP position. The switch automatically returns to the "I" position when released.

OPERATING THE BLOWER

See figure 12.

- Check your equipment before operation, especially the muffler, air intakes, and air filters.
- Use rakes and brooms to loosen debris before blowing.

⚠ WARNING

Never run the product without the blower tubes installed or with the vacuum door not securely closed. Failure to follow these steps could result in possible serious injuries.

⚠ WARNING

Always wear eye protection with side shields marked to comply with standards, along with hearing protection. Failure to do so could result in objects being thrown into your eyes and other possible serious injuries.

1. Start the blower. Refer to "Starting and stopping" in this manual. Hold the blower with the upper handle in your right hand.

⚠ WARNING

Always hold the blower away from your body with the handle in your right hand when operating as a blower, keeping clearance between your body and the product. The muffler side of the blower should be away from your body. Any contact with the housing can result in burns and/or other serious personal injury.

⚠ WARNING

Do not place blower on top of or near loose debris or gravel. Debris may be sucked into blower intake vent resulting in possible damage to the product and could result in serious personal injury.

2. To keep from scattering debris, blow around the outer edges of a debris pile. Never blow directly into the centre of a pile.

NOTE: Operate power equipment at reasonable hours only; not early in the morning or late at night when people might be disturbed. Comply with the times listed in local ordinances.

NOTE: To reduce sound levels, limit the number of pieces of equipment used at any one time.

3. Operate blower at the lowest possible throttle speed to do the job.

NOTE: In dusty conditions, slightly dampen surfaces when water is available.

⚠ WARNING

Watch out for children, pets, open windows, or freshly washed cars, and blow debris safely away.

4. Use the sweeper nozzle so the air stream can work close to the ground.
5. After using blowers or other equipment, clean up. Dispose of debris properly.
6. Use the sweeper nozzle for everyday blowing operation. The nozzle allows for more area to be covered during the blowing operation.

THROTTLE LOCK

See figure 13.

The throttle lock can be used to operate the blower without holding the throttle trigger.

To engage the throttle lock:

1. Pull throttle lock back towards user, and stop at the desired throttle setting.
2. To release the throttle lock, push throttle lock all the way towards the front of the product.

VACUUM OPERATION

See figure 14.

⚠ WARNING

Never run the product without the vacuum tubes and vacuum bag installed. Failure to do so could result in serious personal injury.

⚠ WARNING

Always wear eye protection with side shields marked to comply with standards, along with hearing protection. Failure to do so could result in objects being thrown into your eyes and other possible serious injuries.

⚠ WARNING

Keep the muffler and all hot surfaces of the blower/ vacuum away from your body. Failure to do so could result in possible serious personal injury.

1. Install the vacuum tubes and bag. Refer to the Assembly section earlier in this manual.
2. Start the engine. Refer to Starting and Stopping earlier in this manual.
3. Place the vacuum bag strap over your left shoulder. Hold the upper handle in your right hand and the vacuum handle in your left hand.
4. Move the vacuum from side to side along the outer edge of the debris. To avoid clogging, do not place the vacuum tube directly into the debris pile.
5. Hold the engine higher than the inlet end of the vacuum tube.
6. Always point the vacuum tube downhill when working on a hillside.
7. To avoid injury to the operator or damage to the product, do not pick up rocks, broken glass, bottles, or

other similar objects.

- If the vacuum tubes clog up, stop the engine and disconnect the spark plug wire before cleaning out the obstruction. Remove the vacuum tubes and clear the debris from the blower fan housing. Remove the bag and clear the adaptor. A small rod or stick may be required to clear the entire tube length. Ensure that all debris has been cleared before reassembling the vacuum tubes.

SYMBOLS ON THE PRODUCT



Read the safety and operating instructions in this booklet, and keep it in a safe place for future reference.



Beware of thrown or flying objects. Keep all bystanders, especially children and pets, at least 15 m away from the operating area.



Wear eye protection.



Wear ear protection.



Do not run unit without tubes in place.



Risk of long hair being drawn into air inlet.



Risk of loose clothing being drawn into air intake.



Warning! Hot surface.



To reduce the risk of injury or damage, avoid contact with any hot surface.



Beware of rotating fans. Keep hands and feet out of openings while the product is running.



The guaranteed sound pressure is 89 dB and the guaranteed sound power level is 110 dB.



Use unleaded petrol intended for motor vehicle use with an octane rating of 91 or higher.



Use 2-stroke oil for air cooled engines.



Mix the fuel mix thoroughly and also each time before refuelling.



To stop the product, toggle the stop switch to the "STOP" position.



Lock the throttle lever.



Press the primer bulb 8 times.



Pull the starter grip.



Run the engine at full throttle for 20 seconds.



Starting a cold engine by hand.



Starting a warm engine by hand.



Regulatory Compliance Mark (RCM). The product meets applicable regulatory requirements.

SYMBOLS ON THE MANUAL



Starting a cold engine using an electrical starter.



Starting a warm engine using an electrical starter.

The following signal words and meanings are intended to explain the levels of risk associated with the product:



Indicates an imminently hazardous situation, which, if not avoided, will result in death or serious injury.



Indicates a potentially hazardous situation, which, if not avoided, could result in death or serious injury.



Indicates a potentially hazardous situation, which, if not avoided, may result in minor or moderate injury.

CAUTION

(Without safety alert symbol)
Indicates a situation that may result in property damage.

PRODUCT SPECIFICATIONS

Petrol blower/vacuum	
Model	RBV254ON
Engine displacement	25.4 cc
Rated power	0.80 kW
Engine speed (max)	10 000/min
Engine speed (idle)	3 400 - 3 800/min
Air velocity	342 km/h
Air volume	13 m ³ /min
Weight (without fuel)	4.1 kg
Vibration value at handle according to Annex B of EN 15503:2009+A1:2013	
Blower mode (upper handle)	
Idling	5.4 m/s ²
Racing	14.6 m/s ²
Equivalent vibration total value	13.7 m/s ²
Vacuum mode (upper handle)	
Idling	5.0 m/s ²
Racing	13.1 m/s ²
Equivalent vibration total value	12.3 m/s ²
Vacuum mode (vacuum handle)	
Idling	5.2 m/s ²
Racing	14.6m/s ²
Equivalent vibration total value	13.7 m/s ²
Uncertainty (vibration) K	1.5 m/s ²
Sound power level according to EN 15503:2009+A1:2013 Annex A	
Blower	
Idling	91.7 dB(A)
Racing	107.3 dB(A)
Equivalent A-weight Sound power level	107.3 dB(A)
Uncertainty K (sound power level)	3 dB
Vacuum	
Idling	89.9 dB(A)
Racing	104.7 dB(A)
Equivalent A-weight Sound power level	104.7 dB(A)
Uncertainty K (sound power level)	3 dB

Sound pressure level at operator position according to EN 15503:2009+A1:2013 Annex A (blower/vacuum)

Blower

Idling 85.6

Racing 101.8

Equivalent A-weight emission sound pressure level 101.1

Uncertainty K (sound pressure level) 3

Vacuum

Idling 84.8

Racing 100.9

Equivalent A-weight emission sound pressure level 100.2

Uncertainty K (sound pressure level) 3 dB

Replacement Parts

Vacuum bag 900960015

Air filter 560873001



Techtronic Industries (Australia) Pty. Ltd.
31 Gilby Road, Mount Waverley,
VIC 3149, Australia

Techtronic Industries New Zealand Ltd.
2 Landing Drive, Mangere,
Auckland, New Zealand 2022