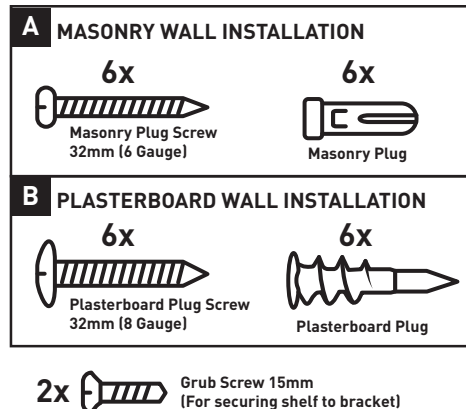
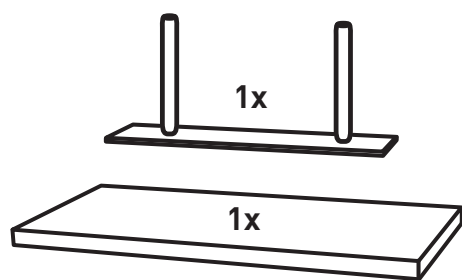


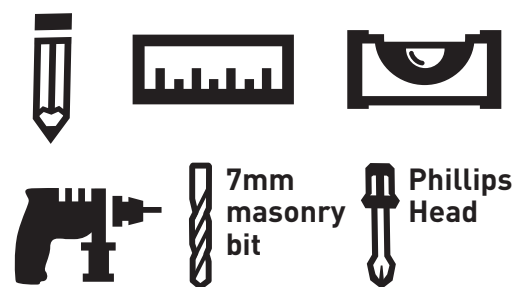
flexi™ STORAGE | DECORATIVE SHELVING

FLOATING SHELF INSTALLATION INSTRUCTIONS

HARDWARE SUPPLIED



TOOLS REQUIRED



CAPACITY

Weight load capacity can vary based on the type of wall you're affixing the shelf to.

As a guideline please see below:



* LOAD EVENLY DISTRIBUTED

flexi™ TIP

READ THROUGH INSTRUCTIONS BEFORE COMMENCING INSTALLATION

Screws and fixings for both masonry and stud walls are included.

Use only the 6 holes in the bracket that best suit your fixing application.

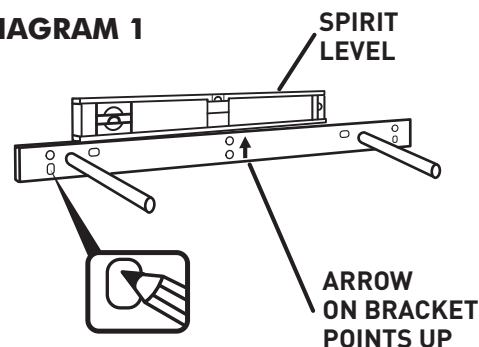
STEP 1

Please read through Fixing Hints prior to commencing Steps.

Position bracket at desired height against the wall, and using a pencil, mark the 6 holes

- Note:**
- Make sure the arrow on the bracket points up.
 - Use spirit level to ensure bracket is level. (See Diagram 1)

DIAGRAM 1



STEP 2

A (Masonry) Using a 7mm masonry drill bit. Drill a 40mm deep hole. Tap Wall Plug into hole (a light hammer may be required) until flush with wall surface. Position Bracket over installed Masonry Plug and install Masonry Plug Screw into wall plug.

B (Plasterboard) Using a Phillips head screwdriver, use force to thread plug through Plasterboard Wall until it is flush with the surface of the wall. Position Bracket over installed Plasterboard Plug and install Plasterboard Plug Screw into wall plug.

Note: Refer to Fixing Hints for additional installation information.

When installing into timber walls or directly into studs, you can install without the need for Plasterboard or Masonry plugs. We suggest pre-drilling a small hole first for easier fixing.

DIAGRAM 2

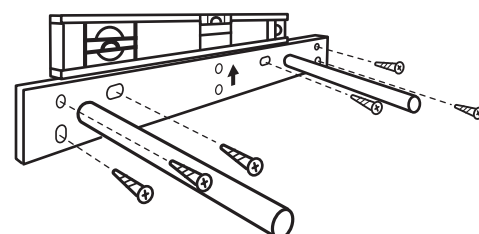


DIAGRAM 3A

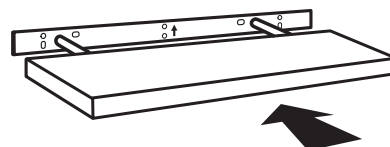
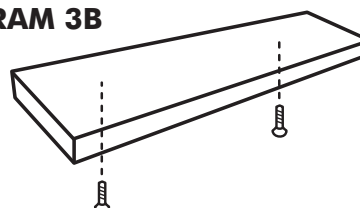


DIAGRAM 3B



STEP 3

Slide the shelf onto the 2 tubes on the bracket.

Note:

- The 2 holes on the shelf face are to point down. (See Diagram 3A)
- Fix the shelf to the bracket by fitting the 2 countersunk head screws from underneath.
- Don't over-tighten (See Diagram 3B)

FIXING HINTS:

1. When mounting onto a plasterboard wall if possible mountings should be into at least 1 stud for added security. If holes do not align with stud, an extra hole could be drilled through the bracket to accommodate this.
2. If mounting only into a plasterboard wall then spread the anchors apart. Try to use only one (upper or lower) of the twin holes as securing using at both of twin holes can weaken plaster.
3. Note that when mounting into plasterboard wall, the anchors are only as strong as the wall they are mounted into. This could reduce the load capacity.

NOTE:

For safety, the bracket pipes are angled slightly upward to prevent shelf droop when shelf is loaded to capacity.

Please note that Floating Shelves are designed for displaying infrequently used decorative items only.

Please keep gloss shelves from direct sunlight as UV light can cause discolouration.



flexistorage.com.au