

VERY IMPORTANT

Please ensure you have all required parts and assembly tools before you begin. We recommend a two person installation for this task.

HOLDS UP TO:

100KG

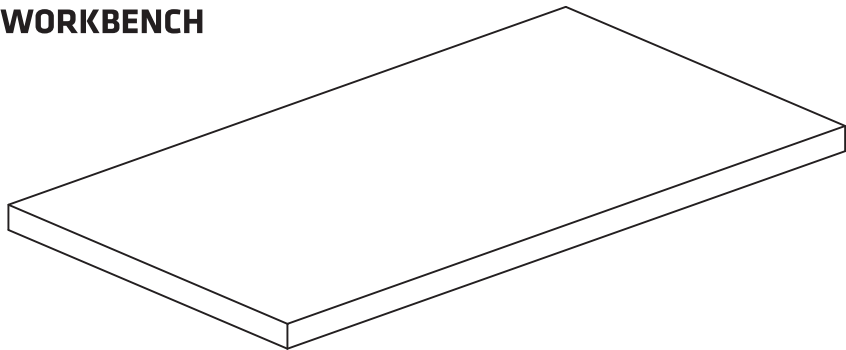
EVENLY DISTRIBUTED

SAFETY TIP

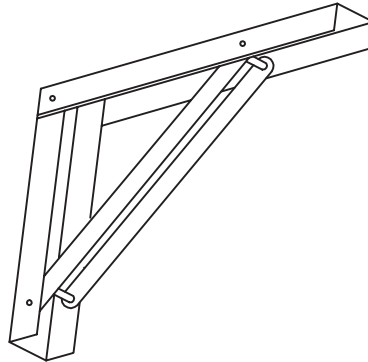
When assembling or installing this product wear protective gloves and eyewear

PARTS LIST:

WORKBENCH



PART A - 1 X RUBBERWOOD WORKBENCH



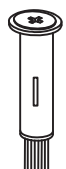
PART B - 2 X FOLDING BRACKETS



PART C - 8 X WORKBENCH M4 SCREWS



PART D - 6 X M6 TIMBER SCREWS



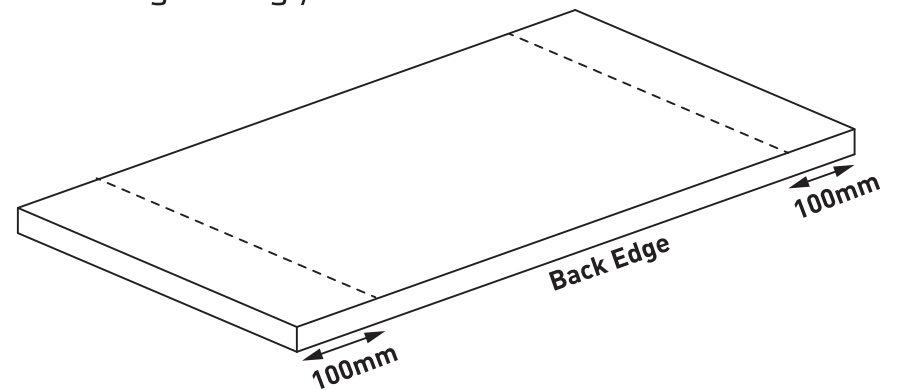
PART E - 6 X M8 MASONRY DYNABOLT

PLEASE NOTE: If using an electric screwdriver only loosely tighten screws, finish tightening with hand screwdriver to avoid damage.

STEP 1

Prepare your Workbench by marking the drilling and screw positions on the Rubberwood top. Flip the Workbench upside down and ensure you have the back edge facing you.

Measure 100mm in from the side edges on both sides and lightly mark with a pencil. This will be the outside edge of your brackets (B).

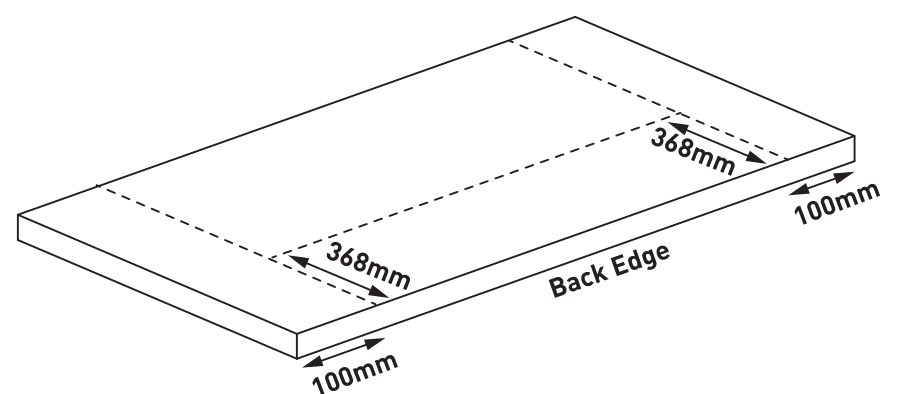


STEP 2

OPTION 1:

For installation to fit an existing Rack It Wall Starter or Add On Kit. 01803/01804.

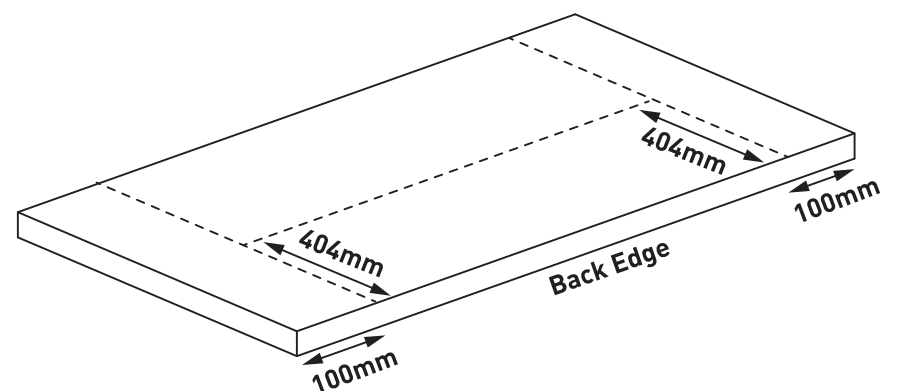
From the back edge of the Workbench – measure 368mm and mark with a pencil - this will be the top end of the bracket.



OPTION 2:

Standalone – For installation flush to a wall.

From the back edge of the Workbench – measure 404mm and mark with a pencil - this will be the top end of the bracket.



Using the outside edge line (step 1) and the top end position (step 2), align the bracket's (B) short edge, mark the hole positions with a pencil and drill pilot holes.

VERY IMPORTANT

Please ensure you have all required parts and assembly tools before you begin. We recommend a two person installation for this task.

HOLDS UP TO:

100KG

EVENLY DISTRIBUTED

SAFETY TIP

When assembling or installing this product wear protective gloves and eyewear

STEP 3

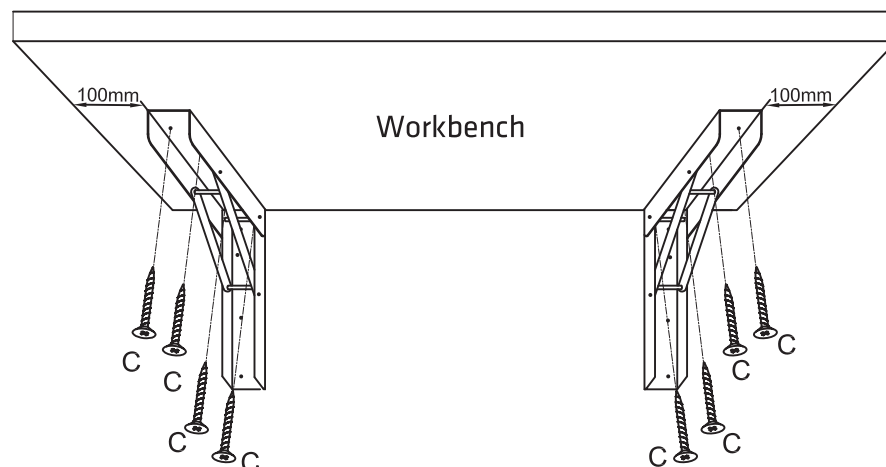
Align the brackets to the marked position on the Workbench and using 8 x C screws, fix the Folding Brackets (B) short edge into the prepared pilot holes on Workbench Top (A) with a phillips head screw driver.

OPTION 1:

The Rack It Wall Workbench Top should sit 34mm from the wall and be almost flush to the Uprights of your Rack It Wall Kit.

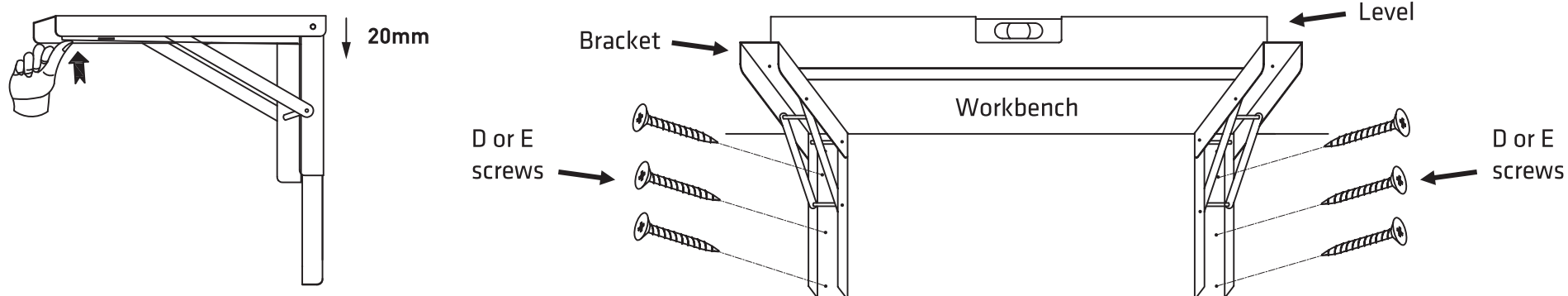
OPTION 2:

Standalone – The Workbench should be almost flush – 2mm off the wall.



STEP 4

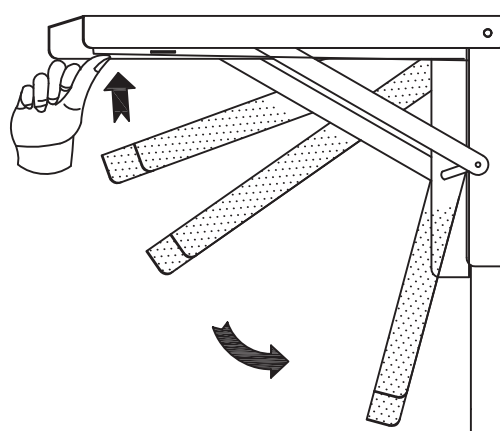
Locate timber studs on wall. Following the line of the studs mark desired Workbench height on wall with a pencil. Align one bracket to the location of the timber stud and set to desired height. Get a friend to hold the Workbench in position and use a spirit level to ensure Workbench is straight. Once straight mark positions of drill holes on the long edge of the brackets.



Using the 6 x D or E screws depending on wall material – screw Folding Brackets into marked positions on wall. Check your levels regularly to ensure it is straight.

STEP 5

To test folding functions – gently press levers simultaneously in Folding Brackets and softly push down – the Workbench will click when it reaches its next locked height. Repeat until you reached the desired position. You can change this as often as you need.



Your Rack It Workbench has 4 adjustable positions.