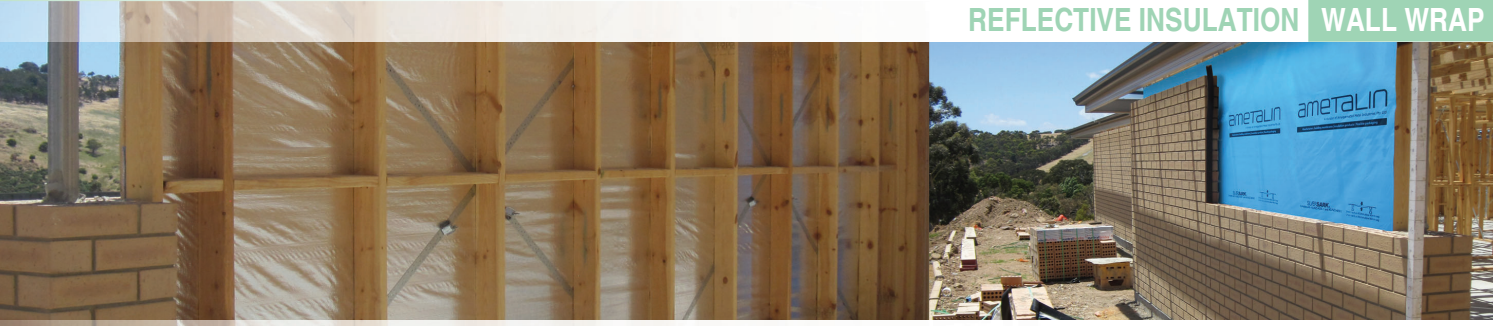


SILVER**SARK**® BREATHER

EXTRA HEAVY DUTY
REFLECTIVE INSULATION WALL WRAP



LOW VAPOUR BARRIER / VAPOUR RETARDER / SEMI-PERMEABLE MEMBRANE

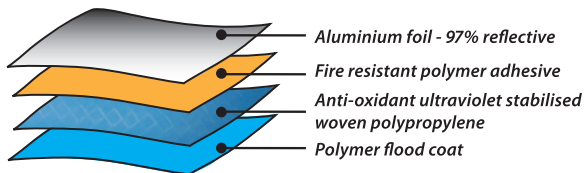
Product Code: XHD-B | I/N: 0810108, 0810357

SILVER**SARK**® BREATHER is an Extra Heavy Duty semi-permeable membrane and vapour retarder, designed to reduce the risk of interstitial condensation in building systems. Classified as Low Vapour Barrier, a dense pattern of micro-perforations allows water vapour to escape from the wall structure while restricting the ingress of liquid water. SILVER**SARK**® BREATHER is ideal for use in double brick and brick veneer wall systems.

- ✓ 97% Reflective
- ✓ Low flammability
- ✓ High strength, light weight
- ✓ Low Vapour Barrier

Construction

SILVER**SARK**® BREATHER is a flexible four layer product made with a combination of anti-oxidant ultra-violet stabilised woven polypropylene, 97% reflective aluminium foil, and fire-resistant polymer adhesive. A dense pattern of micro-perforations enables SILVER**SARK**® BREATHER to achieve Low Vapour Barrier classification, while restricting the passage of water under low pressure.



Ametalin utilises Advanced Laminating Technology; the polymer adhesive remains tacky for an indefinite period and provides superior resistance to heat, fire and delamination.

NOTE: SILVER**SARK**® BREATHER is not classified as a High Water Barrier under AS/NZS 4200.1:2017 *Pliable building membranes and underlays, Part 1: Materials*, which requires testing under a 100 mm water column.

Application

SILVER**SARK**® BREATHER is designed for use as a breather wall wrap and semi-permeable membrane in residential, commercial and office buildings, in regions of Australia south of the Tropic of Capricorn (NCC Climate Zones 2-6). Durability may be affected by environmental factors, including airborne pollutants, if used in industrial or farm buildings.

Tear Resistance

SILVER**SARK**® BREATHER is an extremely lightweight product with superior tear resistance. SILVER**SARK**® BREATHER is guaranteed to meet or exceed the minimum performance levels for Extra Heavy Duty rating required under AS/NZS 4200.1:2017.

	Minimum Value*	Actual Test Value
Machine direction edge tear resistance	90 N	517 N / 25 mm
Lateral direction edge tear resistance	90 N	480 N / 25 mm

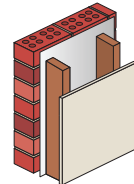
* Minimum value required to qualify as Extra Heavy Duty under AS/NZS 4200.1:2017.

DECLARED TOTAL SYSTEM R-VALUES

The contribution of this product to the total R-value depends on installation and environmental conditions. The R-value will be reduced in the event of the accumulation of dust on upward facing surfaces and in those cavities that are ventilated.

BRICK VENEER

with one layer of SILVER**SARK**® BREATHER

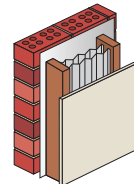


CALCULATION REF: 299r3221

WINTER $R_T 1.3$ SUMMER $R_T 1.2$

BRICK VENEER

with one layer of SILVER**SARK**® BREATHER + two layers of PLEATED SILVER**BATTS**™

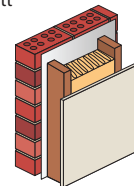


CALCULATION REF: 299w3225

WINTER $R_T 3.4$ SUMMER $R_T 3.0$

BRICK VENEER

with one layer of SILVER**SARK**® BREATHER + R2.5 Fibrous Batt

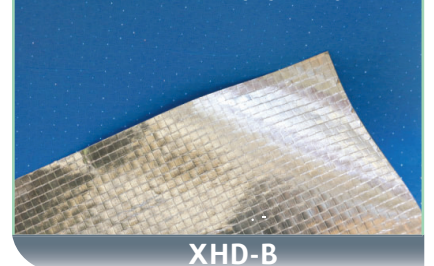


CALCULATION REF: 299w50

WINTER $R_T 3.2$ SUMMER $R_T 3.0$

SILVER**SARK**® BREATHER

MICRO-PERFORATED



XHD-B

SILVERSARK® BREATHER

EXTRA HEAVY DUTY

REFLECTIVE INSULATION WALL WRAP

Classification

SILVERSARK® BREATHER classifications in accordance with AS/NZS 4200.1:2017

PRODUCT		SILVERSARK® BREATHER	AS/NZS 4200.1:2017
FLAMMABILITY INDEX	AS 1530.2-1993	Low	Low ≤ 5
DUTY	AS/NZS 4200.1:2017	Extra Heavy	Classification
EMITTANCE	AS/NZS 4201.5:1994	0.03	Value
REFLECTIVITY		97% (ACTUAL)	Value
RESISTANCE TO WATER PENETRATION	AS/NZS 4201.4:1994	Unclassified	Classification
VAPOUR BARRIER	ASTM E96	Low, PROCEDURE B, WET CUP TEST	Classification
MACHINE DIRECTION TENSILE STRENGTH	AS 1301.448s-91	15.9 kN/m	Min 13.0 kN/m
LATERAL DIRECTION TENSILE STRENGTH	AS 1301.448s-91	14.2 kN/m	Min 10.5 kN/m
MACHINE DIRECTION EDGE TEAR	TAPPI T 470 om-89	517 N	Min 90 N
LATERAL DIRECTION EDGE TEAR	TAPPI T 470 om-89	480 N	Min 90 N
RESISTANCE TO DRY DELAMINATION	AS/NZS 4201.1:1994	Pass	Pass
RESISTANCE TO WET DELAMINATION	AS/NZS 4201.2:1994	Pass	Pass
RESISTANCE TO IMPACT (SANDBAG)	AS 4040.4-2006	N/A	
SHRINKAGE (REPEATED WETTING & DRYING)	AS/NZS 4201.3:1994	0.0%	< 0.5%

WATER VAPOUR TRANSMISSION RATE: 40.6 g/m²·24hr (23°C, 50% RH)

AMETALIN CLASSIFICATION: LOW VAPOUR BARRIER
VAPOUR RETARDER / SEMI-PERMEABLE MEMBRANE

Vapour Barrier Properties

SILVERSARK® BREATHER has a Water Vapour Transmission (WVT) rate of 40.6 grams per square metre per 24 hours tested at 23°C, 50% Relative Humidity (RH). Vapour Resistance 3.04 MN·s/g. Ametalin classification is vapour retarder/semi-permeable membrane. Vapour retarders/semi-permeable membranes can be specified for use under linings in buildings in temperate climate zones south of the Tropic of Capricorn (NCC Climate Zones 2-6#).

A detailed hygrothermal analysis is recommended for moisture control in building design.

NCC Compliant

SILVERSARK® BREATHER complies with AS/NZS 4859.1:2002/ Amdt 1:2006 and AS/NZS 4200.1:2017, and therefore meets all the requirements of the *National Construction Code* for insulation and pliable building membranes.

BUSHFIRE ATTACK LEVELS

SILVERSARK® BREATHER complies with AS 3959-2009 *Construction of buildings in bushfire-prone areas* for use in wall systems BAL – LOW to BAL – FZ.

Total System R-values

R-values apply to typical conditions for mainland Australian capital cities and have been calculated by an independent consulting engineer in accordance with AS/NZS 4859.1:2002/ Amdt 1:2006. For detailed design of building systems, seek advice based on actual site conditions from a qualified licensed engineer.

Reflectivity

SILVERSARK® BREATHER is made with aluminium foil laminates with reflectivity of 97% and emissivity of 0.03, in compliance with AS/NZS 4200.1.6.3.

Storage

This product should be stored under cover in a clean, dry place in the pack provided.

Dimensions

SILVERSARK® BREATHER is sold in sizes:

1350 mm x 60 m (81 m ²)	1500 mm x 30 m (45 m ²)
1350 mm x 30 m (40.5 m ²)	1500 mm x 60 m (90 m ²)
1350 mm x 20 m (27 m ²)	

Specification Notes

When specifying, state the following:

Product Name: SILVERSARK® BREATHER

The insulation to be installed shall be SILVERSARK® BREATHER micro-perforated single-sided reflective laminate, emittance bright side 0.03. Product is manufactured by Ametalin and shall be installed in accordance with AS/NZS 4200.2: 1994 *Pliable Building Membranes and Underlays, Part 2: Installation Requirements*.

Emittance Bright Side: 0.03

Water Vapour Transmission (WVT): 40.6 g/m²·24hr

Vapour Resistance: 3.04 MN·s/g

Vapour Barrier Classification: Low

Water Barrier Classification: Unclassified

Duty: Extra Heavy in accordance with AS/NZS 4200.1:2017

© 2018 Ametalin All Rights Reserved. Ametalin is a division of Amalgamated Metal Industries Pty. Ltd. Product information in this publication and otherwise supplied to users is based on our general experience and is given in good faith, but due to factors outside our knowledge and control which may affect the use of products, no warranty is given or implied with respect to this information or the product itself regarding the suitability of the product for any particular purpose. The usage of this and other building membranes will affect moisture migration in the building element. The purchaser should independently determine the suitability of the product for the intended purpose. For large projects with complex air-conditioning and condensation issues, designers may wish to contact our technical department. Batch number is printed on product. Product colour may vary from batch to batch. Amalgamated Metal Industries Pty. Ltd. reserves the right to amend product specifications without prior notice. Information provided is considered to be true and correct at the time of publication. DTE-42681-16

AUSTRALIAN MADE, AUSTRALIAN OWNED.

AMETALIN

9 -11 Playford Crescent Salisbury North SA 5108

T: +61 8 8285 6955 F: +61 8 8285 5911 E: info@ametalin.com W: ametalin.com

Manufacturers of building membranes | insulation products | flexible packaging



ametalin
Insulation Systems & Building Membranes

SILVER**SARK**[®] BREATHER

EXTRA HEAVY DUTY
REFLECTIVE INSULATION WALL WRAP

Health and Safety Information

Ametalin has assessed SILVER**SARK**[®] BREATHER according to the criteria outlined in the *National Occupational Health and Safety Commission (NOHSC):1008 (1998)* and *NOHSC: 1005 (1999)*. As a result of the assessment, this product is classified as non-hazardous according to the NOHSC criteria. To reduce risk of UV damage when installing this product, wear protective clothing, safety glasses and sunscreen, and work in the shade wherever practical.

Installation

ELECTRICAL SAFETY PRECAUTIONS - BEFORE YOU START:

Ametalin stresses the importance of safe installation practices for foil-based insulation as critical to installer and consumer safety. Aluminium Foil Insulation Association Inc. (AFIA) has prepared Work Method Statements and Hazard Management forms to assist contractors and installers in safe installation of reflective insulation products. These documents are available under 2009 AFIA WMS & Hazard Management, at www.afia.com.au/news/health-and-safety/.

SILVER**SARK**[®] BREATHER should be installed in accordance with *AS/NZS 4200.2: 1994 Pliable Building Membranes and Underlays, Part 2: Installation Requirements*.

GENERAL

SILVER**SARK**[®] BREATHER is not designed to withstand prolonged direct exposure to the elements. Accordingly, the outer construction envelope should be installed without delay. Aluminium foil should not come into contact with wet concrete or mortar, as the aluminium is susceptible to alkali corrosion. If installed within 500 metres of the sea, or in a non-residential building where foil surfaces may be exposed to a corrosive atmosphere (including agricultural sheds), foil surfaces should face an enclosed, un-vented air space. To ensure optimum thermal insulation performance, as well as satisfactory durability, an air space adjacent to the foil side of the product is recommended.

TIMBER & STEEL FRAMED CONSTRUCTION:

- ▶ **TYPICAL BRICK VENEER**
- ▶ **REVERSE BRICK VENEER**
- ▶ **LIGHT WEIGHT CLADDING DIRECT TO STUD**
- ▶ **LIGHT WEIGHT CLADDING ON BATTENS**

SILVER**SARK**[®] BREATHER should be installed horizontally as a continuous membrane by fixing to all framing members with the blue side facing out and overlapped by no less than 150 mm to facilitate drainage. SILVER**SARK**[®] BREATHER should extend from the top plate to the bottom plate on concrete slabs or bearers in timber construction. Fixings are to be no more than 450 mm apart and should be galvanised clouts or staples for fastening to timber construction and tek screws for fastening to steel constructions. In high wind areas, it is recommended to install using flat punched multi-point fasteners or cap screws. Horizontal, vertical and end overlaps must be 150 mm if not taped or 50 mm taped with Ametalin Insulation/Ducting Tape, with all top layers overlapping the outside of lower layers to prevent water ingress. Stagger any vertical overlaps. Any damage made to SILVER**SARK**[®] BREATHER during installation including holes and tears must be repaired. Ensure window and door openings are cut neatly and carefully and are properly fitted at flashing points. SILVER**SARK**[®] BREATHER shall be cut back from any hot flue to avoid being a fire hazard. This can be achieved by a clear space of at least 50 mm, or as recommended by the manufacturer of the flue and approved by the local authority.

© 2018 Ametalin All Rights Reserved. Ametalin is a division of Amalgamated Metal Industries Pty. Ltd. Product information in this publication and otherwise supplied to users is based on our general experience and is given in good faith, but due to factors outside our knowledge and control which may affect the use of products, no warranty is given or implied with respect to this information or the product itself regarding the suitability of the product for any particular purpose. The usage of this and other building membranes will affect moisture migration in the building element. The purchaser should independently determine the suitability of the product for the intended purpose. For large projects with complex air-conditioning and condensation issues, designers may wish to contact our technical department. Batch number is printed on product. Product colour may vary from batch to batch. Amalgamated Metal Industries Pty. Ltd. reserves the right to amend product specifications without prior notice. Information provided is considered to be true and correct at the time of publication. DTE-43313-11

AUSTRALIAN MADE, AUSTRALIAN OWNED.

AMETALIN

9 - 11 Playford Crescent Salisbury North SA 5108

T: +61 8 8285 6955 F: +61 8 8285 5911 E: info@ametalin.com W: ametalin.com

Manufacturers of building membranes | insulation products | flexible packaging

 **ametalin**
Insulation Systems & Building Membranes