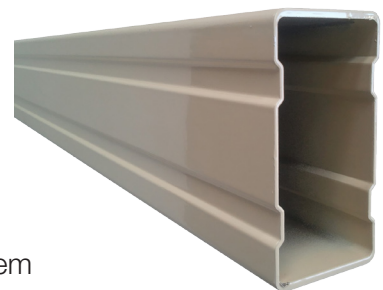




ALYSPAN

STRUCTURAL ALUMINIUM BEAM

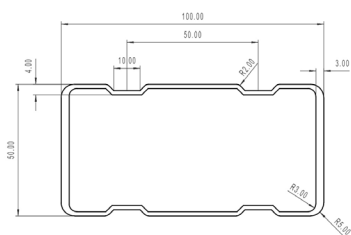
ALYSPAN by Quickbuilt Systems is a **Structural Aluminium Beam** perfect for construction of residential patios, awnings, and carports.



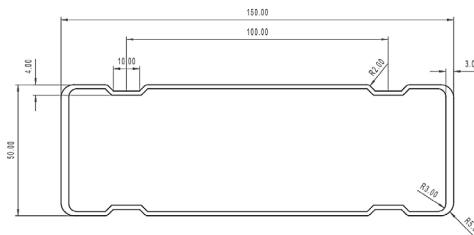
The ALYSPAN Structural Aluminium Beam is a complete beam system comprising of beams, brackets and fixings.

All structural sections comply with Australian standards for Structural Design, Aluminium Structures and Wind Loads for housing.

100 x 50 ALYSPAN Beam



150 x 50 ALYSPAN Beam

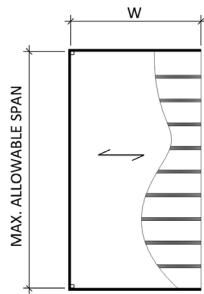


- Light Weight
- Easy to Cut
- Excellent Appearance
- Maintenance Free



SPECIFICATIONS

Span Tables for Case 1: Maximum Building Height = 4.8 m
Single Span – No Overhang



100 x 50 mm ALYSPAN Beam
Single Span – No Overhang
Max. Adjacent Building Height = 4.8 m

W	Maximum Allowable Span (mm)				
	N1	N2	N3	N4	N5
1500	3700	3700	3100	2600	2200
1800	3500	3500	2900	2400	2100
2100	3300	3300	2700	2300	1900
2400	3200	3200	2600	2200	1800
2700	3000	3000	2500	2100	1700
3000	2900	2900	2400	2000	1600
3300	2800	2800	2300	1900	1500
3600	2700	2700	2300	1800	1400
3900	2700	2700	2200	1700	1300
4200	2600	2600	2100	1600	1300
4500	2500	2500	2000	1500	1200

150 x 50 mm ALYSPAN Beam
Single Span – No Overhang
Max. Adjacent Building Height = 4.8 m

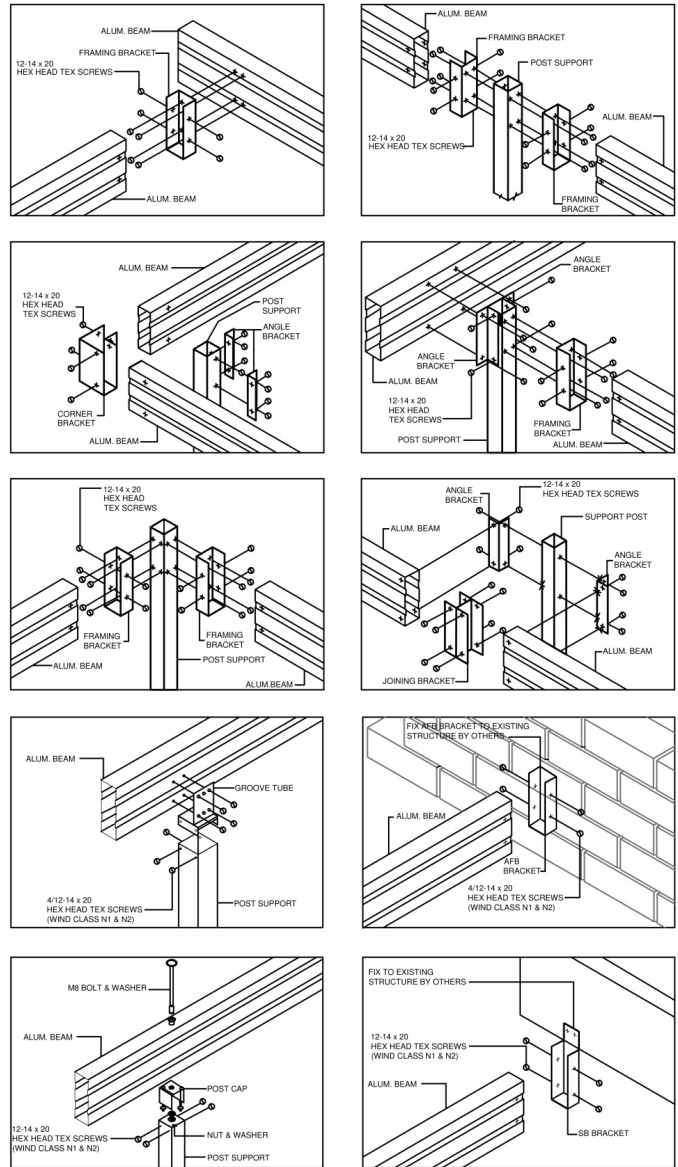
W	Maximum Allowable Span (mm)				
	N1	N2	N3	N4	N5
1500	5100	5100	4200	3600	3100
2000	4700	4700	3800	3300	2600
2500	4300	4300	3600	2900	2300
3000	4100	4100	3300	2600	2100
3500	3900	3900	3100	2400	1900
4000	3700	3700	2900	2300	1800
4500	3500	3500	2700	2100	1700
5000	3400	3300	2500	2000	1600
5500	3300	3100	2400	1900	1500
6000	3200	3000	2300	1800	1400
6500	3100	2900	2200	1700	1300
7000	3000	2800	2100	1600	1300

N.B. Full span tables available.

Connections Schematics

Refer to manufacturer for further details regarding brackets and fixings

Standard Connections



ALYSPAN
STRUCTURAL ALUMINIUM BEAM

