

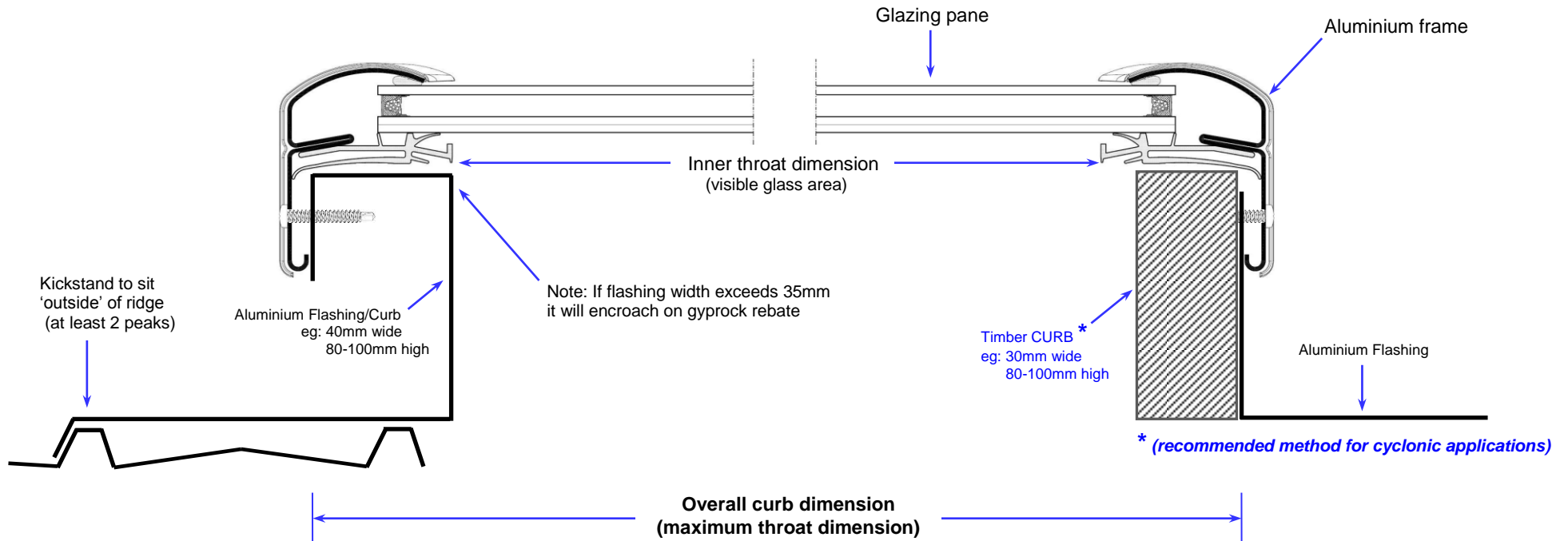
FCM - Fixed "Curb" Mounted Skylight (A21 Model)

FCM Curb detail – suggestion only. (flashing is not supplied with the FCM)

The diagram describes a suggested method of fixing the FCM on a curb flashing. As such it is intended to be used **as a guide only**. Any roof flashing and/or waterproofing is to be supplied by the installer/roofer and must be suitable for the type of roofing material.

The installation of the flashing onto the roof remains the responsibility of the installer.

This diagram does not apply to any internal and/or external guarantees issued.

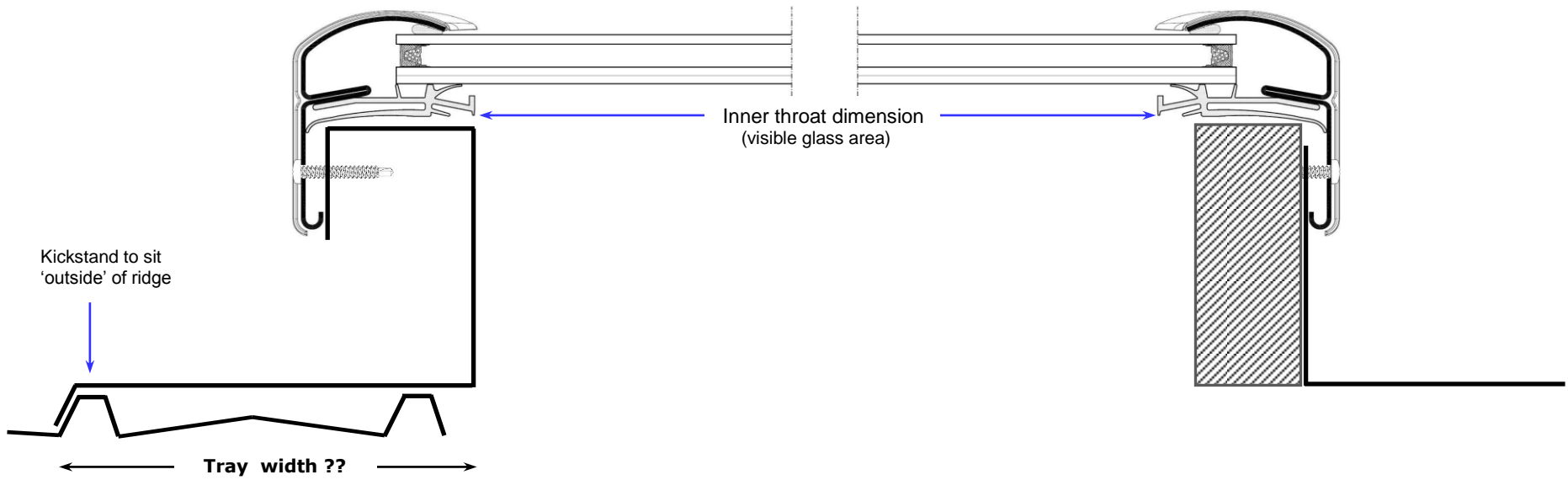


Inner throat dimension:	FCM 1430 = 368 mm x 775 mm
	FCM 2222 = 572 mm x 572 mm
	FCM 2230 = 572 mm x 775 mm
	FCM 2234 = 572 mm x 877 mm
	FCM 2246 = 572 mm x 1181 mm
	FCM 2270 = 572 mm x 1792 mm
	FCM 3030 = 775 mm x 775 mm
	FCM 3046 = 775 mm x 1181 mm
	FCM 3434 = 876 mm x 876 mm
	FCM 4646 = 1181 mm x 1181 mm

OVERALL CURB DIMENSION:

FCM 1430 = 460 mm x 870 mm
FCM 2222 = 665 mm x 665 mm
FCM 2230 = 665 mm x 870 mm
FCM 2234 = 665 mm x 970 mm
FCM 2246 = 665 mm x 1275 mm
FCM 2270 = 665 mm x 1885 mm
FCM 3030 = 870 mm x 870 mm
FCM 3046 = 870 mm x 1275 mm
FCM 3434 = 970 mm x 970 mm
FCM 4646 = 1275 mm x 1275 mm

Tray Widths.



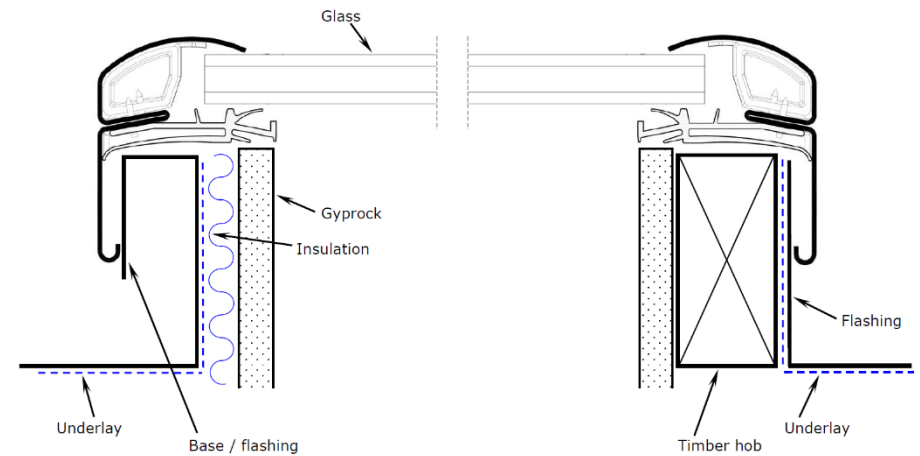
Width of tray depends on ridge span. (Should cover at least two ridges)
(Kliplok, Trimdeck, etc)

Insulation.

Whenever you install an FCM VELUX recommends you insulate the base and/or flashing to increase thermal efficiency. (VELUX does not supply insulation)
If you are using a timber hob insulation may not be necessary.

Consult with relevant authorities for thermal efficiency requirements.

VELUX always recommends using an underlay with any type of flashing.

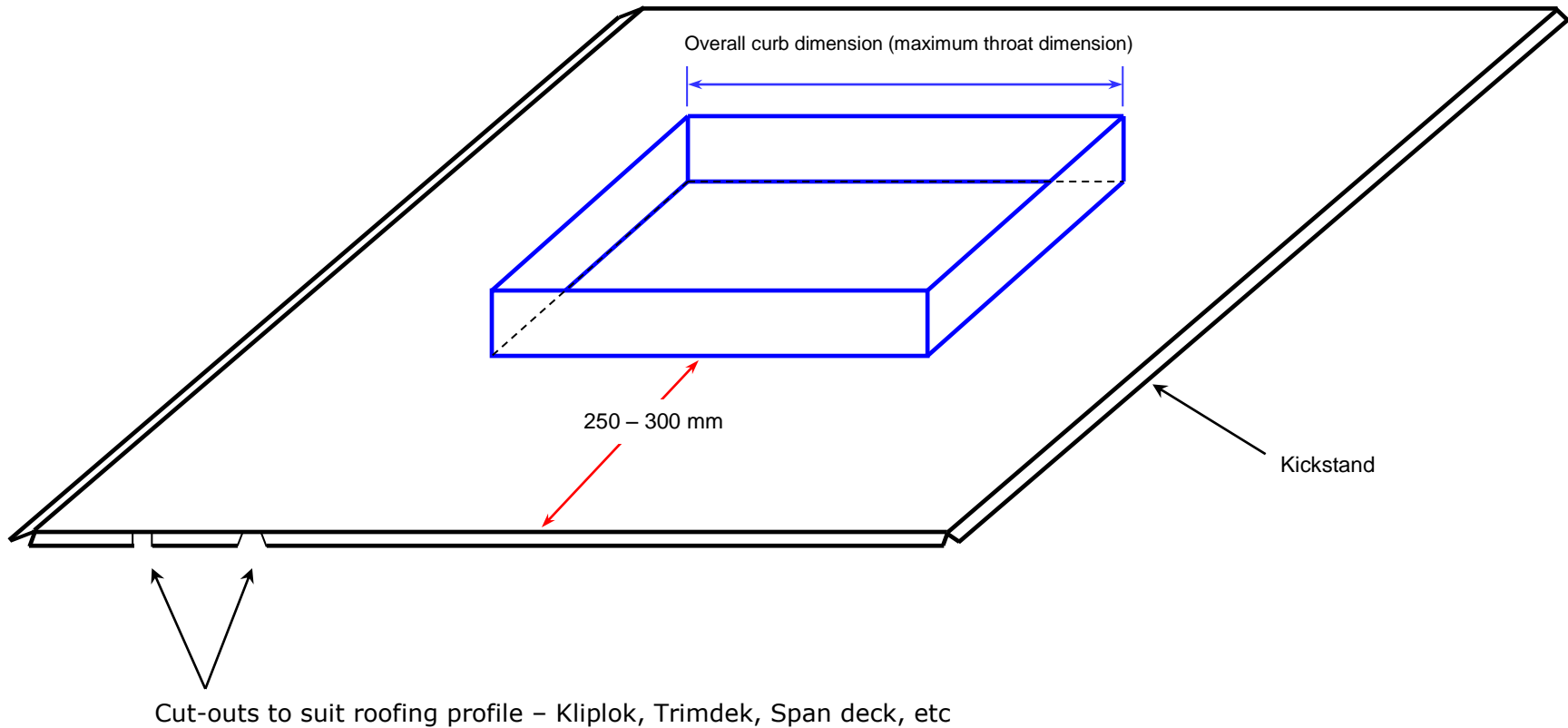


Base with Curb ***

The top tray of the base can be installed:

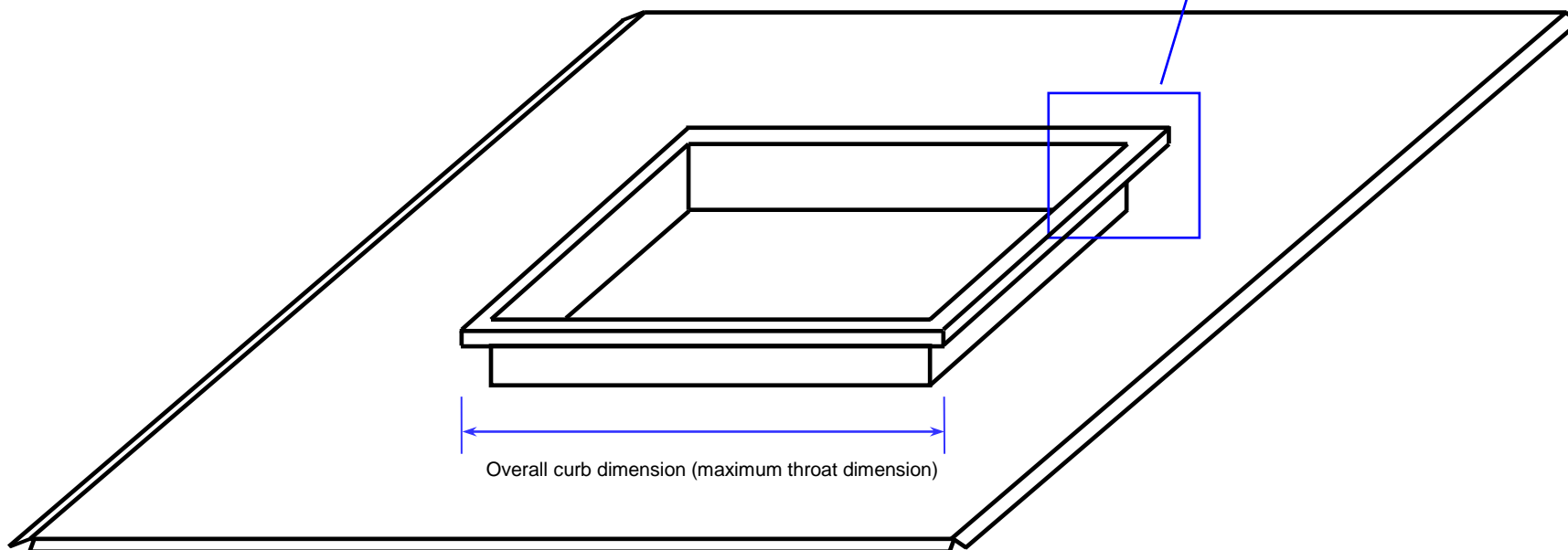
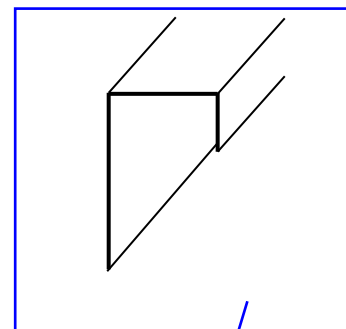
- Above the roofing - preferably all the way to the ridge capping (see diagram page 5)
- Under the roofing. The top of the base can be made as a flat panel to go under metal roofing. (see diagram page 5)

(the kickstand must suit the height of the roofing material)



Optional Base configuration ***

An alternative design of the base utilises a “turndown” to deflect water splashback.



*** Bases are for illustration purposes ONLY. The 'apron' for each base must be made to suit the relevant roofing material. (as per pictures below)
eg: for a tiled roof a flexible bottom apron is recommended. The sides and top of the base should sit under the tiles and the flexible apron should sit **above** the row of tiles immediately below the skylight.



Purpose-built flashing with top tray above roofing material



Purpose-built flashing with top tray under roofing material