

CLASS 2 VAPOUR BARRIER

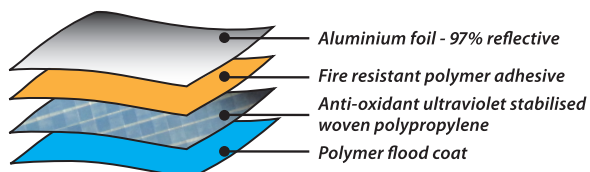
Product Code: MD | I/N: 0810104, 0810479

SILVERWRAP™ is a Medium Duty wall wrap designed for use in all wall system types, and is also suitable for use under metal roofs. The reflective foil side provides extra R-value when installed facing an air cavity, and the multi-layer structure provides superior strength, flexibility and durability. Classified as a Water Barrier, and Class 2 Vapour Barrier, SILVERWRAP™ also acts as a barrier to radiant heat, moisture ingress, draughts and dust penetration.

- ✓ Strong and light weight with high tear resistance
- ✓ Achieves Group 1 classification for wall/ ceiling lining
- ✓ Water barrier, Class 2 Vapour Barrier
- ✓ Low flammability, suitable for all BAL in bushfire-prone areas

Construction

SILVERWRAP™ is a flexible four layer product made with a combination of anti-oxidant UV-stabilised woven polypropylene, 97% reflective aluminium foil, and fire-resistant polymer adhesive, backed by a polymer flood coat. In order to minimise shrinkage after installation, our products are pre-shrunk during the manufacturing process.



Ametalin utilises Advanced Laminating Technology; the polymer adhesive remains tacky indefinitely and provides superior resistance to heat, fire and delamination.

Application

SILVERWRAP™ is designed for use as a wall wrap in residential and office buildings in all regions of Australia, and is also suitable for use under metal roofs. SILVERWRAP™ may also be used as a facing material to glasswool, rockwool and semi-rigid bulk insulation provided processing temperatures do not exceed 80°C to ensure no significant changes in the material supplied.

NOTE: Water Barrier, Class 2 Vapour Barrier wall wraps are recommended for wet tropical climate zones

Tear Resistance

SILVERWRAP™ is an extremely lightweight product with superior tear resistance. SILVERWRAP™ is guaranteed to meet or exceed the minimum performance levels for Medium Duty rating required under AS/NZS 4200.1:2017.

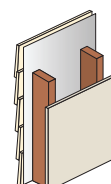
	Minimum Value*	Actual Test Value
Machine direction edge tear resistance	65 N	452 N / 25 mm
Lateral direction edge tear resistance	65 N	341 N / 25 mm

* Minimum value required to qualify as Medium Duty under AS/NZS 4200.1:2017

DECLARED TOTAL SYSTEM R-VALUES

The contribution of this product to the total R-value depends on installation and environmental conditions. The R-value will be reduced in the event of the accumulation of dust on upward facing surfaces and in those cavities that are ventilated.

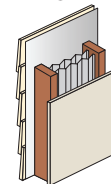
LIGHT WEIGHT CLADDING (direct to stud)
with one layer of SILVERWRAP™



CALCULATION REF: 299w3226

WINTER R_T 1.0 SUMMER R_T 0.9

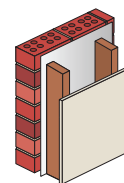
LIGHT WEIGHT CLADDING (direct to stud)
with one layer of SILVERWRAP™ + two layers of PLEATED SILVERBATTS™



CALCULATION REF: 299w39b

WINTER R_T 3.1 SUMMER R_T 2.7

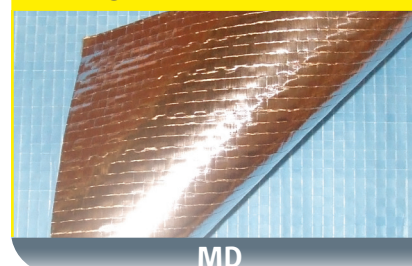
BRICK VENEER
with one layer of SILVERWRAP™



CALCULATION REF: 299w3221

WINTER R_T 1.3 SUMMER R_T 1.2

SILVERWRAP™



Material Properties and Classifications

SILVERWRAP™ classifications in accordance with AS/NZS 4200.1:2017 and AS/NZS 4859.1:2002, Amdt 1 2006

CRITERIA	REFERENCE	RESULT	REQUIREMENT
Flammability Index	AS 1530.2-1993	Low ≤ 5	High (> 5) / Low (≤ 5)
Duty	AS/NZS 4200.1:2017	Medium	Classification
Tensile Strength	AS 1301.448s-91	Machine Direction	Min 9.5 kN/m
		Lateral Direction	Min 6.0 kN/m
Edge Tear	TAPPI T 470 om-89	Machine Direction	Min 65 N
		Lateral Direction	Min 65 N
Vapour Control	ASTM E96	Class 2 Vapour Barrier	Class 1 to 4
Vapour Permeance	ASTM E96	0.0117 µg/N.s	µg/N.s
Water Control	AS/NZS 4201.4:1994	Water Barrier	Water Barrier or Non-water Barrier
Resistance to Dry Delamination	AS/NZS 4201.1:1994	Pass	Pass
Resistance to Wet Delamination	AS/NZS 4201.2:1994	Pass	Pass
Shrinkage (Repeated wetting & drying)	AS/NZS 4201.3:1994	0.0%	< 0.5%
Electrical Conductivity	AS/NZS 4200.1:2017	Electrically Conductive	Electrically Conductive or Electrically Non-conductive
Emittance Value	AS/NZS 4201.5:1994	Bright side: 0.03	Anti-glare side: 0.9
Emittance Classification	AS/NZS 4200.1:2017	IR Reflective	IR Non-reflective
Emittance Category	AS/NZS 4200.1:2017	RN	RR RS RN SS SN NN

NCC Compliant

SILVERWRAP™ complies with AS/NZS 4859.1:2002/Amdt 1:2006 and AS/NZS 4200.1:2017, and therefore meets all of the requirements of the National Construction Code of Australia for insulation and sarking-type materials.

Fire Performance

GROUP NUMBER ASSESSMENT

Group 1

Tested in accordance with AS ISO 9705-2003 – Fire tests - Full-scale room test for surface products.

FLAMMABILITY INDEX

Low (≤5)

Tested in accordance with AS 1530.2-1993 - Methods for fire tests on building materials, components and structures Part 2: Test for flammability of materials.

BUSHFIRE ATTACK LEVELS

SILVERWRAP™ complies with AS 3959-2009 Construction of buildings in bushfire-prone areas for use in wall systems BAL – LOW to BAL – FZ.

Handling & Storage

This product should be stored under cover in a clean, dry place in the pack provided.

Dimensions

SILVERWRAP™ is sold in sizes:

1350 mm x 60 m (81 m²)

1350 mm x 30 m (40.5 m²)

Bulk rolls available upon request.

Specification Notes

When specifying, state the following:

Product Name: SILVERWRAP™ Medium Duty

The insulation to be installed shall be SILVERWRAP™ Medium Duty single-sided reflective laminate, emittance bright side 0.03. Product is manufactured by Ametalin and shall be installed in accordance with AS 4200.2: 1994 Pliable Building Membranes and Underlays, Part 2: Installation.

Emittance Bright Side: 0.03

Water Vapour Transmission (WVT): 1.44 g/m²·24hr

Vapour Resistance: 85.61 MN·s/g

Vapour Control Classification: Class 2 Vapour Barrier

Water Control Classification: Water Barrier

Duty: Medium in accordance with AS/NZS 4200.1:2017

© 2019 Ametalin All Rights Reserved. Ametalin is a division of Amalgamated Metal Industries Pty. Ltd. Product information in this publication and otherwise supplied to users is based on our general experience and is given in good faith, but due to factors outside our knowledge and control which may affect the use of products, no warranty is given or implied with respect to this information or the product itself regarding the suitability of the product for any particular purpose. The usage of this and other building membranes will affect moisture migration in the building element. The purchaser should independently determine the suitability of the product for the intended purpose. For large projects with complex air-conditioning and condensation issues, designers may wish to contact our technical department. Batch number is printed on product. Product colour may vary from batch to batch. Amalgamated Metal Industries Pty. Ltd. reserves the right to amend product specifications without prior notice. Information provided is considered to be true and correct at the time of publication. DTE-43567-13

AUSTRALIAN MADE, AUSTRALIAN OWNED.

AMETALIN

9 - 11 Playford Crescent Salisbury North SA 5108

T: +61 8 8285 6955 F: +61 8 8285 5911 E: info@ametalin.com W: ametalin.com

Manufacturers of building membranes | insulation products | flexible packaging



ametalin

Insulation Systems & Building Membranes

Health and Safety Information

Ametalin has assessed SILVERWRAP™ according to the criteria outlined in the *National Occupational Health and Safety Commission (NOHSC):1008 (1998)* and *NOHSC: 1005 (1999)*. As a result of the assessment, this product is classified as non-hazardous according to the NOHSC criteria. To reduce risk of UV damage when installing this product, wear protective clothing, safety glasses and sunscreen, and work in the shade wherever practical.

Installation

ELECTRICAL SAFETY PRECAUTIONS - BEFORE YOU START:

Ametalin stresses the importance of safe installation practices for foil-based insulation as critical to installer and consumer safety. Aluminium Foil Insulation Association Inc. (AFIA) has prepared Work Method Statements and Hazard Management forms to assist contractors and installers in safe installation of reflective insulation products. These documents are available under 2009 AFIA WMS & Hazard Management, at www.afia.com.au/news/health-and-safety/.

SILVERWRAP™ should be installed in accordance with *AS 4200.2: 1994 Pliable Building Membranes and Underlays, Part 2: Installation*.

GENERAL

SILVERWRAP™ is not designed to withstand prolonged direct exposure to the elements. Accordingly, the outer construction envelope should be installed without delay. Aluminium foil should not come into contact with wet concrete or mortar, as the aluminium is susceptible to alkali corrosion. If installed within 500 metres of the sea, or in a non-residential building where foil surfaces may be exposed to a corrosive atmosphere (including agricultural sheds), foil surfaces should face an enclosed, un-vented air space. To ensure optimum thermal insulation performance, as well as satisfactory durability, an air space adjacent to the foil side of the product is recommended.

TIMBER & STEEL FRAMED CONSTRUCTION:

- ▶ **BRICK VENEER**
- ▶ **REVERSE BRICK VENEER**
- ▶ **LIGHT WEIGHT CLADDING DIRECT TO STUD**
- ▶ **LIGHT WEIGHT CLADDING ON BATTENS**

In framed walls and gables, SILVERWRAP™ should be installed horizontally as a continuous membrane by fixing to all framing members with the blue side facing out and overlapped by no less than 150 mm to facilitate drainage. SILVERWRAP™ should extend from the top plate to the bottom plate on concrete slabs or bearers in timber construction. Fixings are to be no more than 450 mm apart and should be galvanised clouts or staples for fastening to timber construction and tek screws for fastening to steel constructions. In high wind areas, it is recommended to install using flat punched multi-point fasteners or cap screws. Horizontal, vertical and end overlaps must be 150 mm if not taped or 50 mm taped with Ametalin Insulation/Ducting Tape, with all top layers overlapping the outside of lower layers to prevent water ingress. Stagger any vertical overlaps. Any damage made to SILVERWRAP™ during installation including holes and tears must be repaired.

Where SILVERWRAP™ is intended to act as a vapour barrier, tape and seal all overlapped joints, penetrations and discontinuities with Ametalin Insulation/Ducting Tape to prevent air movement. When SILVERWRAP™ is installed as a sarking membrane, all penetrations shall be sealed or turned up to facilitate drainage around penetration. Ensure window and door openings are cut neatly and carefully and are properly fitted at flashing points. SILVERWRAP™ shall be cut back from any hot flue to avoid being a fire hazard. This can be achieved by a clear space of at least 50 mm, or as recommended by the manufacturer of the flue and approved by the local authority.

AMETALIN TAPE RANGE

It is recommended to use the following when required to secure, join, seal and install SILVERWRAP™.

	Size	Product Code	Item Number
Ametalin Insulation Ducting Tape	48 mm x 50 m	IDT-5050	0810227
Ametalin Reinforced Insulation Ducting Tape:	75 mm x 50 m	IDTR-7250	0029077
Ametalin Double Sided Fixing Tape	38 mm x 50 m	DSFT-3850	0811320

© 2017 Ametalin All Rights Reserved. Ametalin is a division of Amalgamated Metal Industries Pty. Ltd. Product information in this publication and otherwise supplied to users is based on our general experience and is given in good faith, but due to factors outside our knowledge and control which may affect the use of products, no warranty is given or implied with respect to this information or the product itself regarding the suitability of the product for any particular purpose. The usage of this and other building membranes will affect moisture migration in the building element. The purchaser should independently determine the suitability of the product for the intended purpose. For large projects with complex air-conditioning and condensation issues, designers may wish to contact our technical department. Batch number is printed on product. Product colour may vary from batch to batch. Amalgamated Metal Industries Pty. Ltd. reserves the right to amend product specifications without prior notice. Information provided is considered to be true and correct at the time of publication. DTE-43567-13

AUSTRALIAN MADE, AUSTRALIAN OWNED.

AMETALIN

9-11 Playford Crescent Salisbury North SA 5108

T: +61 8 8285 6955 F: +61 8 8285 5911 E: info@ametalin.com W: ametalin.com

Manufacturers of building membranes | insulation products | flexible packaging