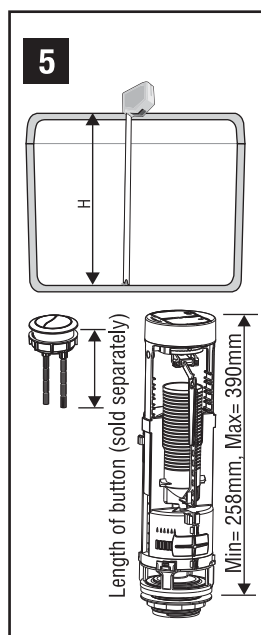
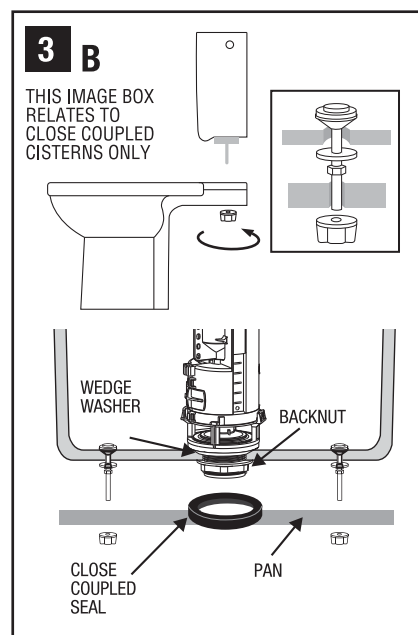


NOTE: Image number relates to relevant step in instructions. Labelled product diagram located at bottom of page 2 with terminology used.

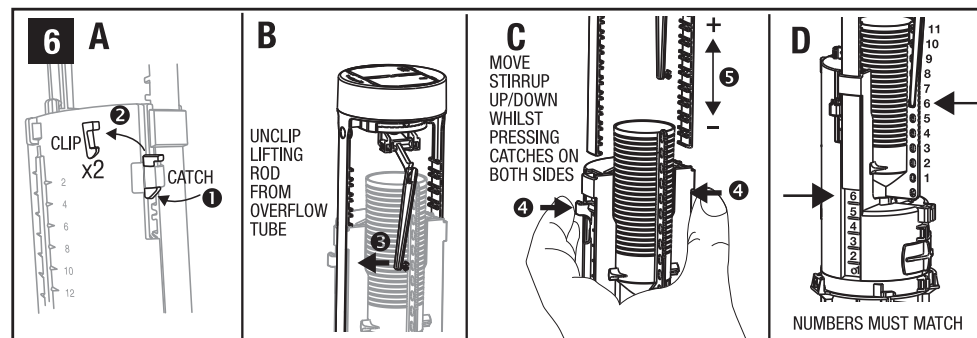
We recommend installation by a licensed plumber. Ensure that the backflow prevention complies with AS/NZS 3500.1 requirements.



1. Turn off water at cistern tap. Flush cistern until all water is removed. Place bucket underneath the outlet as some water may remain in the cistern.
2. Remove cistern lid and remove button from lid. (Consult original manufacturer if unsure how to remove).
- 3A. For a regular pan and cistern, remove the flush pipe by unscrewing the flush pipe cap nut under the cistern.
- 3B. For a close coupled pan and cistern, the cistern will have to be removed by unscrewing the nuts under the cistern and lifting the cistern off the pan.

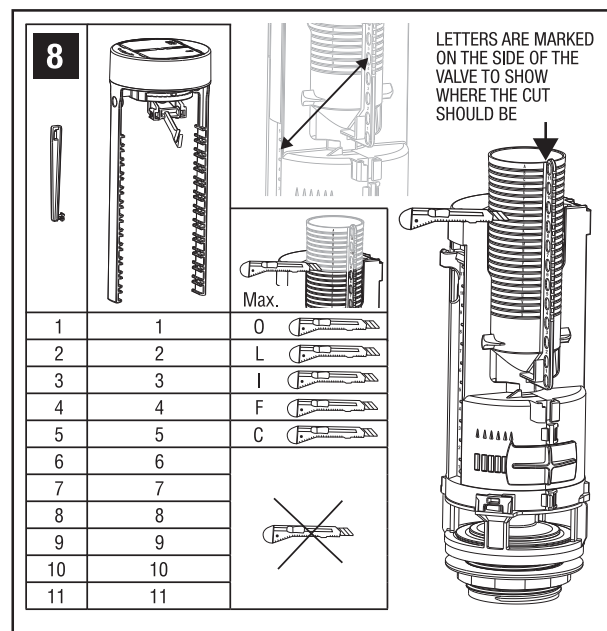


4. Remove the old valve by unscrewing the backnut at the bottom of the valve underneath the cistern.
5. Measure your cistern height to determine the correct valve height to fit inside your cistern (leaving space for the buttons and stems to fit inside the lid).
- 6A. Remove the stirrup clips by pushing in at the bottom and lifting upwards until the two stirrup clips are separate. Keep clips.
- 6B. Unclip the lifting rod from the overflow tube.
- 6C. Push the stirrup catches in on both sides whilst pulling/pushing on the stirrup until it is adjusted to the correct height to fit your cistern.
- 6D. Ensure that both sides of the stirrup remain even and that the stirrup is clipped into a height where the bottom of the stirrups line up with one of the lines marked (above each number on the side of the valve). Take note of the number at your height position.
7. If number is between 1-5 inclusive, remove the stirrup completely as the overflow tube will require cutting. If the

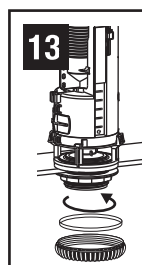
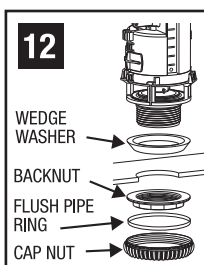


number is 6 or above, proceed to step 10.

8. With the stirrup removed, cut the outlet valve overflow tube as per the Image 8 chart (for example, if your desired height is at number 2, the overflow tube should be cut at level L - letters are marked on the overflow tube). If the desired height number is between 6-11 inclusive, there is no need to cut the overflow tube.



9. Replace the stirrup to the desired height number, again ensuring that the bottom of the stirrup is at the same height as the marked line above your height number (as per step 6D).
10. Refit the lifting rod to the hole in the overflow tube marked with the same number as your height number. The numbers must match for the valve to operate correctly (Image 6D).
11. Reinsert the stirrup clips into the side catches to firmly hold the stirrup in place. (Image 6A). Ensure that each clip is securely locked into the catch, with both the top and bottom of the clip on the outside of the valve.
12. Insert the valve into the cistern base. The wedge washer goes inside the cistern, around the base of the outlet valve, pointed end facing downwards.

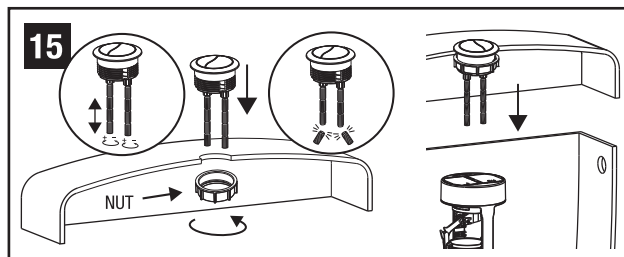


13. Screw the backnut on from below.

14. For regular cisterns, reattach the flush pipe using the flush pipe ring and the cap nut. For close coupled cisterns, attach as per image 3B, flush pipe ring & cap nut not required.

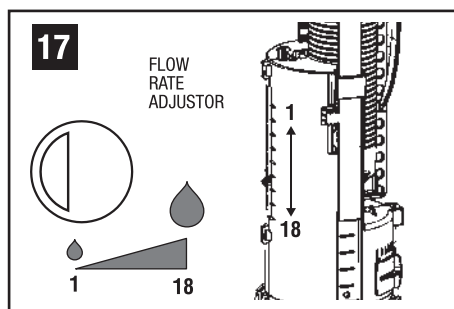
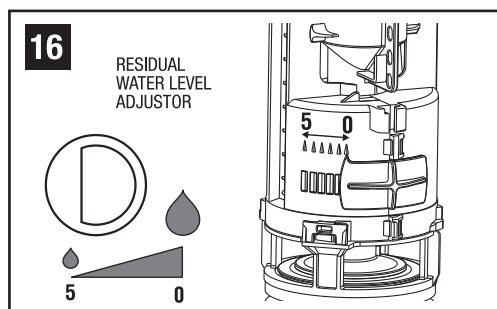
15. Attach your button (sold separately) to the lid, placing it through the cistern lid hole and ensuring that the button is straight with the stems lining up with the outlet valve flush paddles. Secure tightly. Adjust valve height, or cut button stems to fit, so that when the cistern lid is on, the stems rest on top of the flush paddles.

16. Changing the residual water level can improve the toilet flushing process or can reduce the full flush to conserve water. Slide the adjuster to the desired position. Position #0 will increase the full flush to approximately 8.5 litres. Position #5 will reduce the full flush to approximately 6.3 litres.



17. To adjust the half flush, move the flow rate adjustor to the desired height. Position #1 will achieve a minimum half flush (approximately 1.55 litres). Position #18 will achieve a higher half flush (approx. 5.8 litres).

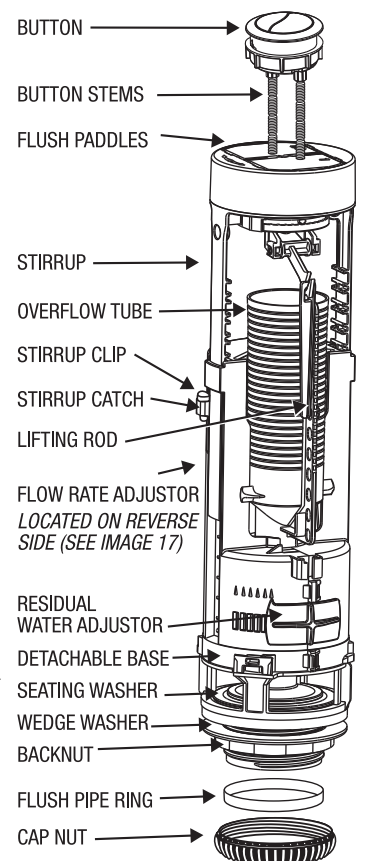
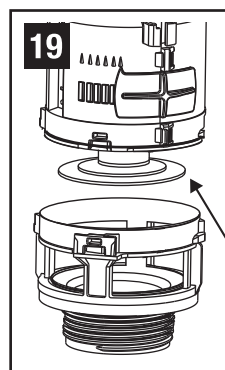
18. Refit lid, turn on water, check for leaks and ensure that the toilet flushes correctly. If the button is recessed or low, or if the toilet will not flush, the stirrup or button stems are positioned incorrectly or are at the wrong height.



MAINTENANCE

19. The wedge washer, flush pipe ring and seating washer only have a 12 month warranty and should be replaced periodically as they wear out.

To replace the Endura® Outlet Valve seating washer, turn off water, flush toilet, open the cistern, turn the outlet valve 90 degrees counter-clockwise to separate it from the base and remove the valve. The seating washer is located at the bottom as per the image shown. Replace the washer (product #235350), reinsert the valve into the base and turn 90 degrees clockwise to lock into position.



12 YEAR PRODUCT WARRANTY

This warranty runs for twelve years from the date of purchase.

Our products come with guarantees that cannot be excluded under the Australian Consumer Law. You are entitled to a replacement or refund for a major failure and for compensation for any other loss or damage. You are also entitled to have the goods repaired if the goods fail to be of acceptable quality and the failure does not amount to a major failure.

WHAT IS COVERED: This warranty covers any defects in materials or workmanship with the exception of the reasons stated below. The warranty covers the product used in normal domestic use.

WHAT IS NOT COVERED: This warranty does not cover wear and tear to working parts, misuse or abuse, or discolourations due to exposure to cleaning chemicals. The warranty does not cover the wedge washer (replacement part #206398), the flush pipe ring (#208484), or the seating washer (#235350). We recommend installation by a licensed plumber. Warranty may be void if the product is incorrectly installed.

CLAIM PROCEDURE: If you believe that you have a legitimate claim with your Endura® Outlet Valve, please contact FIX-A-TAP® Australia via our website at www.fixatap.com.au to complete the warranty claim form. Alternatively you can contact our office on (02) 9476 7400. Any written correspondence should be sent to: FIX-A-TAP® Australia Pty Ltd, Units 1-2, 41 Leighton Place, Hornsby NSW 2077. Please keep your receipt for proof of purchase.