

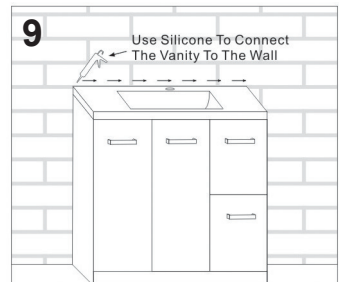
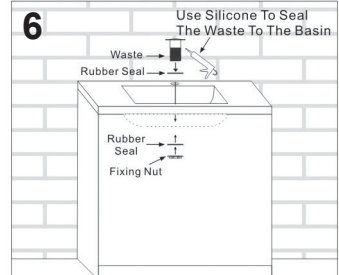
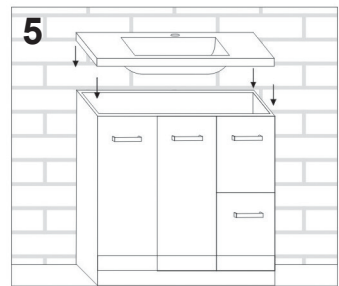
BATHROOM VANITY WITH CERAMIC BASIN INSTALLATION INSTRUCTIONS

PRE-INSTALLATION INSPECTION

Thoroughly inspect product for any defects prior to installation. Products will not be warranted for defects after they have been installed.

INSTALLATION

1. It is recommended that this vanity unit is installed by a licensed tradesperson.
2. Measure the locations that your plumbing will need to be transferred into the vanity unit.
3. Using a hole saw, drill holes to suit the size of the plumbing in the marked out locations.
4. Place the vanity into desired location.
5. Install the ceramic basin onto the cabinet. Wet area silicone is recommended to support and seal the basin to the cabinet.
6. Install a waste onto the basin. Wet area silicone is recommended to seal the top and bottom of the waste to the basin.
NOTE: basin waste sold separately.
7. Connect the plumbing (all plumbing must be installed by a licensed plumber).
8. Check all connections for leaks.
9. We recommend applying wet area silicone to seal the vanity to the wall.



CARE & MAINTENANCE

- The cabinet is moisture resistant, not waterproof. Damage may occur if the cabinet is exposed to water for extended periods of time. Excess water should be wiped dry at the earliest opportunity. Ensure the bathroom has adequate ventilation to prevent moisture build up.
- Be mindful of sharp objects that may scratch or damage the surface. Do not tap objects such as shaving razors or toothbrushes etc., against the surface.
- Clean with a soft cloth and warm water or a mild detergent. Do not use abrasive cleaners or harsh chemicals. Ensure cabinet is adequately dried after cleaning. Avoid leaving toothpaste or other bathroom products' residues on the surface for extended periods.