

ozito

IMPACT WRENCH

12V DC

INSTRUCTION MANUAL

SPECIFICATIONS

Voltage:	12V DC
Power:	80W
Max Torque:	260Nm
Drive Shaft:	1/2" (12.7mm)
Weight:	1.7kg

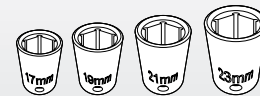
ozito.com.au



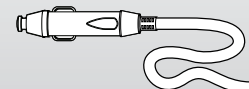
WHAT'S IN THE BOX



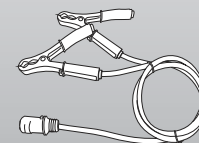
Impact Wrench



4 x Drive Sockets



12V Socket Connector



12V Battery Adaptor

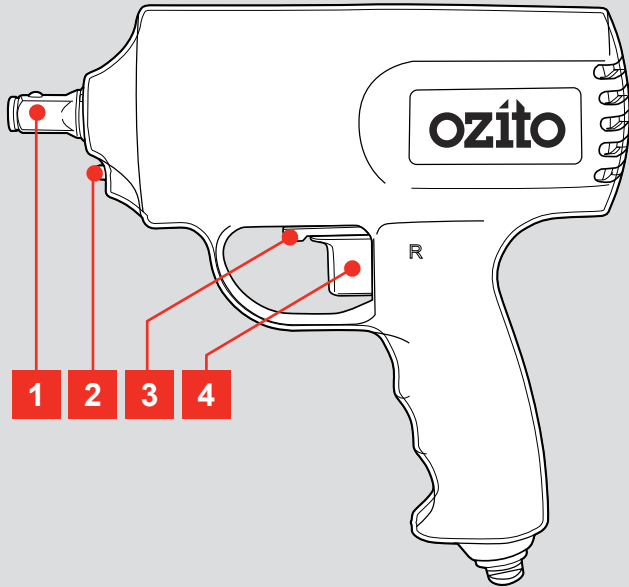
3 YEAR REPLACEMENT WARRANTY

IWA-2100

KNOW YOUR PRODUCT

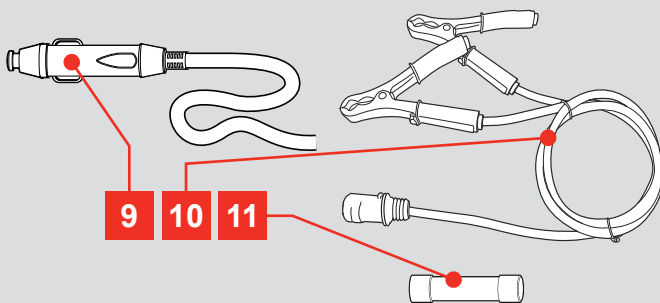
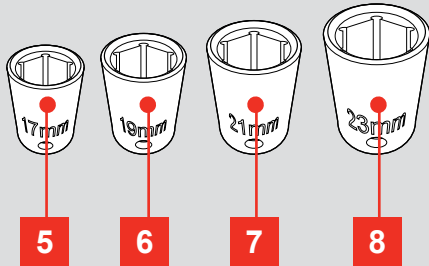
12V IMPACT WRENCH

- 1 1/2" Drive Shaft
- 2 Operating LED
- 3 Forward/Reverse Lever
- 4 On/Off Trigger



ACCESSORIES

- 5 17mm Socket
- 6 19mm Socket
- 7 21mm Socket
- 8 23mm Socket
- 9 12V Socket Connector
- 10 12V Battery Adaptor
- 11 Spare 10A Fuse



ONLINE MANUAL

Scan this QR Code with your mobile device to take you to the online manual.



SETUP & PREPARATION

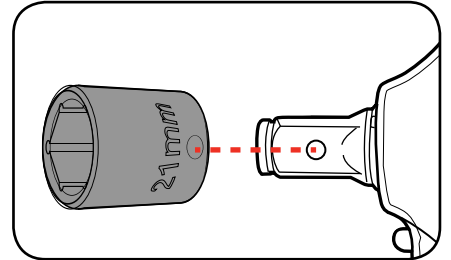
1. CHANGING ACCESSORIES



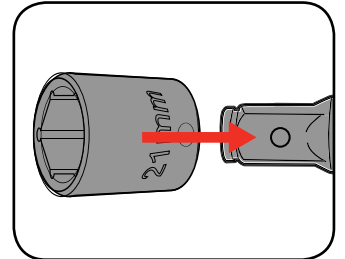
WARNING! ENSURE THE TOOL IS SWITCHED OFF AND DISCONNECTED FROM THE POWER SUPPLY BEFORE PERFORMING ANY OF THE FOLLOWING ASSEMBLY.

Attaching Accessories

- 1 Align the socket with the drive shaft making sure the ball of the shaft aligns with the hole in the socket.

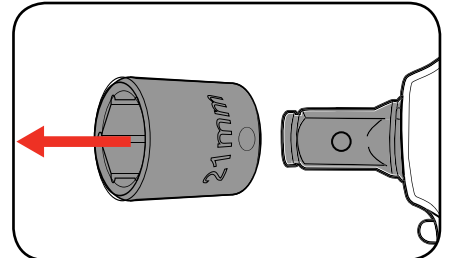


- 2 Push the socket onto the shaft until it clicks into place.



Removing Accessories

- 1 Pull the socket away from the drive shaft to remove.



3

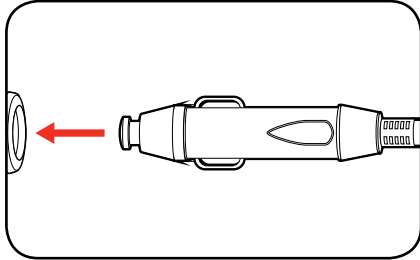
 YEAR REPLACEMENT WARRANTY

OPERATION

2. CONNECTING TO A POWER SOURCE

Connecting to a 12V outlet

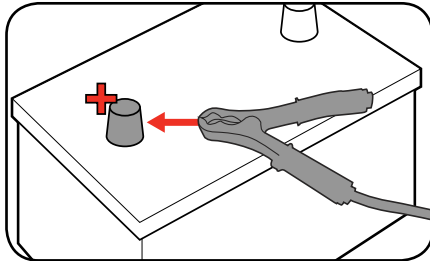
- 1 Connect the 12V socket to a 12V DC outlet which can be found in your vehicle.



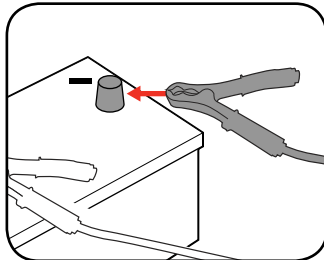
Connecting Directly to a 12V Battery

The impact wrench can be connected to a 12V battery directly using the 12V battery adaptor that is supplied.

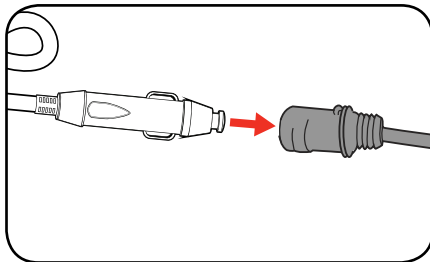
- 1 Connect the positive clamp (red) to the positive terminal of the 12V Battery.



- 2 Connect the negative clamp (black) to the negative terminal of the 12V Battery.



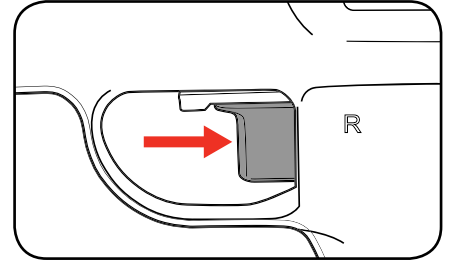
- 3 Plug the 12V socket into the 12V battery adaptor.



3. CONTROLS

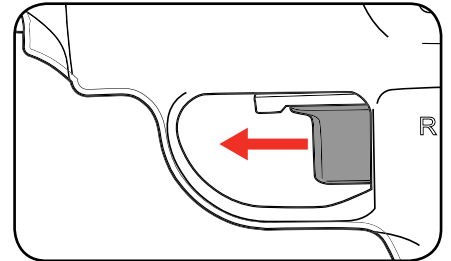
Switching On & Off

- 1 To start the impact wrench depress the on/off trigger



Note: Once the on/off trigger is pressed the operating LED will glow to help illuminate the working area.

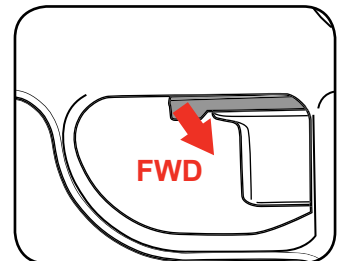
- 2 Release the on/off trigger to stop the wrench.



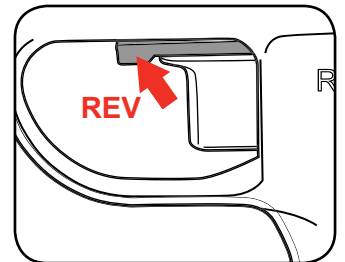
Forward/Reverse Lever

The impact wrench features a forward/reverse lever which allows for loosening and tightening bolts.

- 1 To tighten bolts push the forward/reverse lever to the left side of the wrench.

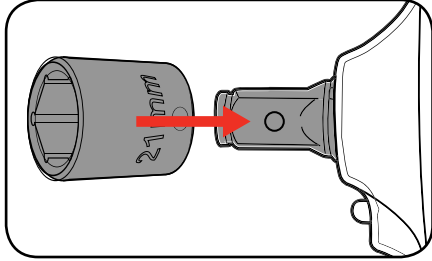


- 2 To loosen bolts push the forward/reverse lever to the right side of the wrench.

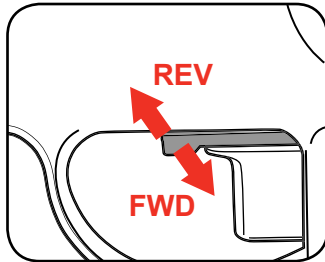


4. OPERATING THE IMPACT WRENCH

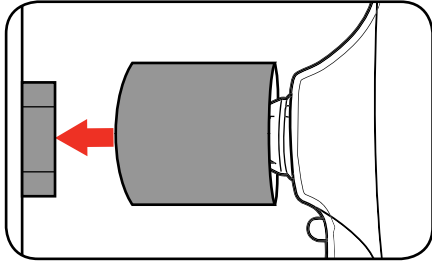
- 1 Attach the correct socket to the drive shaft.



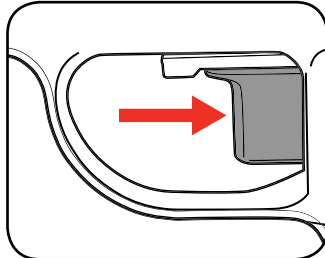
- 2 Select the desired forward/reverse setting for the job.



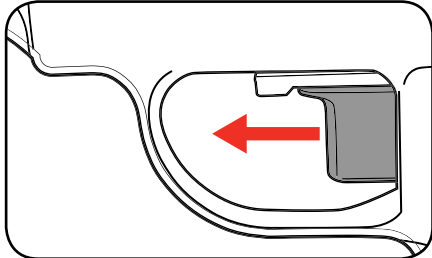
- 3 Place the socket over the bolt needing tightening or loosening.



- 4 Hold the impact wrench firmly and press the on/off trigger to start operating.



- 5 Release the on/off trigger to stop the impact wrench.

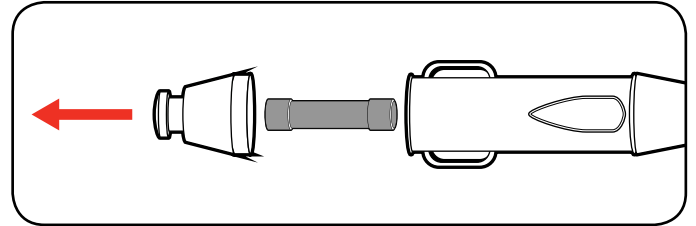


NOTE: WHEN USING THE IMPACT WRENCH FOR TIGHTENING, FIRST TIGHTEN THE BOLT OR NUT BY HAND TO PREVENT DAMAGING THE THREAD.

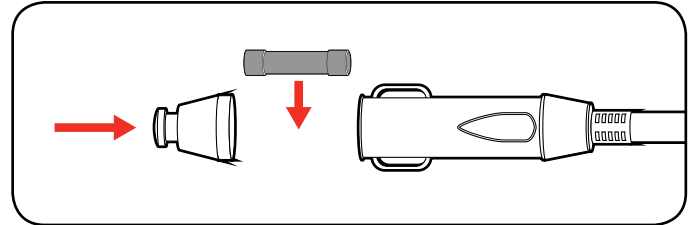
5. REPLACING THE FUSE

The 12V socket is fitted with a 10A fuse to protect the impact wrench. If the impact wrench has stopped working and the LED does not illuminate, the fuse may need to be replaced.

- 1 Unscrew the top of the 12V socket to expose the fuse.



- 2 Replace the 10A fuse and screw the top back onto the 12V socket.



MAINTENANCE

- Keep the ventilation vents of the impact wrench clean at all times, if possible, prevent foreign matter from entering the vents.
- After each use, blow air through the impact wrench housing to ensure it is free from all dust particles which may build up. Build up of dust particles may cause the impact wrench to overheat and fail.
- If the enclosure of the impact wrench requires cleaning, do not use solvents but a moist soft cloth only. Never let any liquid get inside the impact wrench; never immerse any part of the impact wrench into a liquid.
- If the replacement of the supply cord is necessary, this has to be done by the manufacturer or his agent in order to avoid a safety hazard.

DESCRIPTION OF SYMBOLS

V	Volts	Hz	Hertz
~	Alternating current	W	Watts
/min	Revolutions or reciprocation per minute	n	No load speed
∅	Diameter		Warning
	Read instruction manual		Regulator compliance mark
	Wear ear protection		Wear eye protection

CARING FOR THE ENVIRONMENT



Power tools that are no longer usable should not be disposed of with household waste but in an environmentally friendly way. Please recycle where facilities exist. Check with your local council authority for recycling advice.



Recycling packaging reduces the need for landfill and raw materials. Reuse of recycled material decreases pollution in the environment. Please recycle packaging where facilities exist. Check with your local council authority for recycling advice.

ELECTRICAL SAFETY



WARNING! When using mains-powered tools, basic safety precautions, including the following, should always be followed to reduce risk of fire, electric shock, personal injury and material damage.

Read the whole manual carefully and make sure you know how to switch the tool off in an emergency, before operating the tool.

Save these instructions and other documents supplied with this tool for future reference.

The electric motor has been designed for 12V only. Always check that the power supply corresponds to the voltage on the rating plate.

If the supply cord is damaged, it must be replaced by an electrician or a power tool repairer in order to avoid a hazard.

TROUBLESHOOTING

Problem	Cause	Solution
Sparkling visible through the housing vents	Small amounts of sparking is normal	Not a problem
The impact wrench does not start	Impact wrench not connected to the power	Connect the 12V socket to a 12V DC outlet
	Insufficient supply voltage	Try another 12V outlet
	Fuse needs replacing	Replace Fuse
The impact wrench is damaging the thread or bolt head	Nut or bolt not pre tightened	When tightening nuts or bolts, first tighten by hand
	Socket not placed over the bolt head properly	Ensure the correct size socket is being used and is placed over the bolt head
LED light won't turn on	Impact wrench not connected to the power	Plug the 12V socket into a 12V outlet
	Fuse may need replacing	Replace 10A fuse following the steps in this manual

SPARE PARTS

Spare parts can be ordered from the Special Orders Desk at your local Bunnings Warehouse.

For further information, or any parts not listed here, visit www.ozito.com.au or contact Ozito Customer Service:

Australia 1800 069 486

New Zealand 0508 069 486

E-mail: enquires@ozito.com.au



GENERAL POWER TOOL SAFETY WARNINGS - PERSONAL SAFETY



WARNING! Read all safety warnings and all instructions. Failure to follow the warnings and instructions may result in electric shock, fire and/or serious injury. Save all warnings and instructions for future reference. The term "power tool" in the warnings refers to your mains-operated (corded) power tool or battery-operated (cordless) power tool.

1. Work area safety

- a. **Keep work area clean and well lit.** Cluttered or dark areas invite accidents.
- b. **Do not operate power tools in explosive atmospheres, such as in the presence of flammable liquids, gases or dust.** Power tools create sparks which may ignite the dust or fumes.
- c. **Keep children and bystanders away while operating a power tool.** Distractions can cause you to lose control.

2. Electrical safety

- a. **Power tool plugs must match the outlet. Never modify the plug in any way. Do not use any adapter plugs with earthed (grounded) power tools.** Unmodified plugs and matching outlets will reduce risk of electric shock.
- b. **Avoid body contact with earthed or grounded surfaces, such as pipes, radiators, ranges and refrigerators.** There is an increased risk of electric shock if your body is earthed or grounded.
- c. **Do not expose power tools to rain or wet conditions.** Water entering a power tool will increase the risk of electric shock.
- d. **Do not abuse the cord. Never use the cord for carrying, pulling or unplugging the power tool. Keep cord away from heat, oil, sharp edges or moving parts.** Damaged or entangled cords increase the risk of electric shock.
- e. **When operating a power tool outdoors, use an extension cord suitable for outdoor use.** Use of a cord suitable for outdoor use reduces the risk of electric shock.

3. Personal safety

- a. **Stay alert, watch what you are doing and use common sense when operating a power tool. Do not use a power tool while you are tired or under the influence of drugs, alcohol or medication.** A moment of inattention while operating power tools may result in serious personal injury.
- b. **Use personal protective equipment. Always wear eye protection.** Protective equipment such as dust mask, non-skid safety shoes, hard hat, or hearing protection used for appropriate conditions will reduce personal injuries.
- c. **Prevent unintentional starting. Ensure the switch is in the off-position before connecting to power source and/or battery pack, picking up or carrying the tool.** Carrying power tools with your finger on the switch or energising power tools that have the switch on invites accidents.

- d. **Remove any adjusting key or wrench before turning the power tool on.** A wrench or a key left attached to a rotating part of the power tool may result in personal injury.
 - e. **Do not overreach. Keep proper footing and balance at all times.** This enables better control of the power tool in unexpected situations.
 - f. **Dress properly. Do not wear loose clothing or jewellery. Keep your hair, clothing and gloves away from moving parts.** Loose clothes, jewellery or long hair can be caught in moving parts.
 - g. **If devices are provided for the connection of dust extraction and collection facilities, ensure these are connected and properly used.** Use of dust collection can reduce dust-related hazards.
- ## 4. Power tool use and care
- a. **Do not force the power tool. Use the correct power tool for your application.** The correct power tool will do the job better and safer at the rate for which it was designed.
 - b. **Do not use the power tool if the switch does not turn it on and off.** Any power tool that cannot be controlled with the switch is dangerous and must be repaired.
 - c. **Disconnect the plug from the power source and/or the battery pack from the power tool before making any adjustments, changing accessories, or storing power tools.** Such preventive safety measures reduce the risk of starting the power tool accidentally.
 - d. **Store idle power tools out of the reach of children and do not allow persons unfamiliar with the power tool or these instructions to operate the power tool.** Power tools are dangerous in the hands of untrained users.
 - e. **Maintain power tools. Check for misalignment or binding of moving parts, breakage of parts and any other condition that may affect the power tool's operation. If damaged, have the power tool repaired before use.** Many accidents are caused by poorly maintained power tools.
 - f. **Keep cutting tools sharp and clean.** Properly maintained cutting tools with sharp cutting edges are less likely to bind and are easier to control.
 - g. **Use the power tool, accessories and tool bits etc. in accordance with these instructions, taking into account the working conditions and the work to be performed.** Use of the power tool for operations different from those intended could result in a hazardous situation.
- ## 5. Service
- a. **Have your power tool serviced by a qualified repair person using only identical replacement parts.** This will ensure that the safety of the power tool is maintained.



IMPACT WRENCH SAFETY WARNINGS

Keep the cord clear of the accessory being used, do not wrap the cord around your arm or wrist.

Hold the tool by the insulated gripping surfaces when performing an operation where the accessory may contact hidden wiring or its own cord.

Wear ear protectors with impact wrenches. Exposure to noise can cause hearing loss.

Bits, sockets and tools get hot during operation, it's recommended to wear gloves when handling them.

Do not overreach while operating the tool. Maintain a balanced working stance at all times.

Do not use this tool for prolonged periods of time. Take regular breaks. Use gloves to provide extra cushioning in order to avoid any injury from the vibrations of the tool.

Always use safety glasses. Everyday glasses are not Safety Glasses.



Warning! Some dust created by power sanding, sawing, grinding, drilling and other construction activities contain chemicals known to cause cancer, birth defects or other reproductive harm.

Some examples of these chemicals are:

- Lead from lead-based paints
- Crystalline silica from bricks and cement and other masonry products
- Arsenic and chromium from chemically treated timber

Your risk from exposure to these chemicals varies, depending on how often you do this type of work.

To reduce your exposure to these chemicals: work in a well ventilated area and work with approved safety equipment, such as dust masks that are specially designed to filter out microscopic particles.

WARRANTY

IN ORDER TO MAKE A CLAIM UNDER THIS WARRANTY YOU MUST RETURN THE PRODUCT TO YOUR NEAREST BUNNINGS WAREHOUSE WITH YOUR BUNNINGS REGISTER RECEIPT. PRIOR TO RETURNING YOUR PRODUCT FOR WARRANTY PLEASE TELEPHONE OUR CUSTOMER SERVICE HELPLINE:

Australia 1800 069 486

New Zealand 0508 069 486

TO ENSURE A SPEEDY RESPONSE PLEASE HAVE THE MODEL NUMBER AND DATE OF PURCHASE AVAILABLE. A CUSTOMER SERVICE REPRESENTATIVE WILL TAKE YOUR CALL AND ANSWER ANY QUESTIONS YOU MAY HAVE RELATING TO THE WARRANTY POLICY OR PROCEDURE.

The benefits provided under this warranty are in addition to other rights and remedies which are available to you at law.

Our goods come with guarantees that cannot be excluded at law. You are entitled to a replacement or refund for a major failure and for compensation for any other reasonably foreseeable loss or damage. You are also entitled to have the goods repaired or replaced if the goods fail to be of acceptable quality and the failure does not amount to a major failure.

Generally you will be responsible for all costs associated with a claim under this warranty, however, where you have suffered any additional direct loss as a result of a defective product you may be able to claim such expenses by contacting our customer service helpline above.

3 YEAR REPLACEMENT WARRANTY

Your product is guaranteed for a period of **36 months from the original date of purchase** and is intended for DIY (Do It Yourself) use only. If a product is defective it will be replaced in accordance with the terms of this warranty. Warranty excludes consumable parts, for example: accessories, etc.

WARNING

The following actions will result in the warranty being void.

- If the tool has been operated on a supply voltage other than that specified on the tool.
- If the tool shows signs of damage or defects caused by or resulting from abuse, accidents or alterations.
- Failure to perform maintenance as set out within the instruction manual.
- If the tool is disassembled or tampered with in any way.
- Professional, industrial or high frequency use.