

# RYOBI®

RPW3200Y

ORIGINAL INSTRUCTIONS

## Petrol High Pressure Cleaner



## **Important!**

It is essential that you read the instructions in this manual before assembling, operating, and maintaining the product.

Subject to technical modification.

Safety, performance, and dependability have been given top priority in the design of your petrol high pressure cleaner.

### INTENDED USE

The petrol high pressure cleaner is only intended for use outdoors. For safety reasons, the product must be adequately controlled by using two-handed operation.

The product is designed for home or domestic use. It is intended to clean machines, vehicles, buildings, floors, tools, facades, terraces, and concrete walkways by removal of stubborn dirt using clean water with or without cleaning detergent.

It should be used in well-illuminated conditions. Do not use the product for any other purpose.

### ⚠ WARNING

The product is designed for use with a neutral cleaning agent supplied or recommended by the manufacturer. The use of other cleaning agents or chemicals may adversely affect the safety of the product.

### GENERAL SAFETY WARNINGS

#### ⚠ CAUTION

The product must not be used on the drinking water supply without a backflow preventer being installed. Water flowing through a backflow preventer is considered non-drinkable. Always observe the regulations of your local water utility company when connecting the product to a water supply line.

### ⚠ WARNING

**Read all safety warnings and all instructions.** Failure to follow the warnings and instructions may result in electric shock, fire, and/or serious injury.

- The product is not intended for use by children or persons with reduced physical, sensory, or mental capabilities, or lack of experience and knowledge. Children should be adequately supervised to ensure they do not play with the product.
- Wear a complete personal protective

equipment when operating the product, such as boots, safety gloves, safety helmets with visor, and hearing protection. Use high-impact visors only with liquid splash protection.

### ⚠ WARNING

Do not use the product when people are within range, unless they wear protective clothing.

- To reduce the risk of injury, keep children and visitors away. All visitors should wear safety glasses and be kept at a safe distance from the work area.
- Inspect the safety devices, such as safety valves, flow switches, and pressure switches to check if they are in good working condition. Make sure all safety devices are operating properly before each use. The trigger lock out locks the trigger and prevents unintentional opening of the high-pressure jet.
- Do not use the product if the important parts are damaged, such as safety devices, high-pressure hoses, or trigger gun.
- Exercise caution when operating the trigger. Hold the trigger handle firmly with two hands to avoid injury when the trigger handle kicks back.

### ⚠ WARNING

During use of high pressure cleaners, aerosols may be formed. Inhalation of aerosols can be hazardous to health.

### ⚠ WARNING

Depending on the application, shielded nozzles can be used for high-pressure cleaning, which will reduce the emission of hydrous aerosols. However, not all applications allow the use of such a device. If shielded nozzles are not applicable for the protection against aerosols, a respiratory mask of class FFP 2 or equivalent may be needed, depending on the cleaning environment.

- Always stop the product when you leave it unattended.
- High pressure jet is dangerous if misused. Do not direct the jet to people, live electrical

equipment, or the product itself.

- To avoid a risk of explosion, do not spray flammable liquids.
- Do not direct the jet against yourself or others in order to clean clothes or footwear.
- High-pressure hoses, fittings, and couplings are important for the safety of the product. Use only hoses, fittings, and couplings recommended by the manufacturer.
- Do not use the product indoors unless adequate ventilation is assessed by the national labour authorities of your country.
- Do not start the engine in a confined space where dangerous carbon monoxide fumes can collect. Carbon monoxide is a colourless, odourless, and dangerous gas. It can cause unconsciousness or death.
- Use the product only in a well-ventilated area, and make sure exhaust gases are properly discharged. Ensure that any exhaust emissions are not in the vicinity of air intakes.
- Only use fuels specified by the manufacturer. The use of inappropriate fuels may increase the risk of explosion.

#### ADDITIONAL SAFETY WARNINGS

- Some regions have regulations that restrict the use of the product in some operations. Check with your local authority for advice.
- Before each use, check for damage. A damaged high-pressure hose must be replaced immediately. Ensure all connections, such as high-pressure hose and nozzle, are secure. Unwind the hose properly so they will not get twisted or kinked.
- Do not allow children or untrained individuals to use the product.
- Before starting any cleaning operation, close doors and windows to prevent water from entering. Clear the area to be cleaned of debris, toys, outdoor furniture, or other objects that could create a hazard.
- Never pick up or carry the product while the engine is running.
- Do not use or store the product in temperatures below 0°C.
- Do not use acids, alkalines, solvents, flammable material, bleaches, or industrial grade solutions in the product. These

products can cause physical injuries to the operator and irreversible damage to the product.

- Always operate the product on a level surface. If the engine is on an incline, it could seize due to improper lubrication, even if the lubricant is at a maximum level.

#### ⚠ WARNING

High-pressure jet can be dangerous if subject to misuse. The jet must not be directed to people, animals, electrical devices, or the product itself.

- Hold the trigger handle securely with both hands. Expect the trigger handle to move when the trigger is pulled due to reaction forces. Failure to do so could cause loss of control and injury to yourself and others.
- Make sure the air in the hose and pump is released before you turn on the product. To remove the air in the hose and pump, connect the water supply to the pump using a garden hose, connect the trigger handle to pump using the high-pressure hose, disengage the trigger handle lock, and press the trigger until there is a steady flow.
- Exercise caution to avoid slipping or falling.
- Keep firm footing and balance. Do not overreach. Overreaching can result in loss of balance.
- Only use accessories that are recommended by the manufacturer. The use of improper accessories may cause injury.
- Never leave the product running unattended. Turn the product off. Do not leave the product until it comes to a complete stop.
- Be familiar with the controls. Know how to stop the product and bleed the pressure quickly.
- Stay alert and exercise control. Watch what you are doing and use common sense.
- Do not use the product when you are tired, ill, or under the influence of drugs, alcohol, or medication. A moment of inattention while operating the product may result in serious personal injury.
- Do not use the product if the switch does not turn it on and off. Any product that cannot

be controlled with a switch is dangerous and must be repaired.

- Keep a minimum distance of 30 cm when cleaning vehicles. The high-pressure jet may damage or burst vehicle tires and/or tire valves.
- Keep cooling air intake (recoil starter area) and muffler side of the engine at least 1 m (3 ft.) away from buildings, obstructions, and other combustible objects.
- Keep the engine away from flammables and other hazardous materials.
- Keep away from hot parts. The muffler and other engine parts become very hot. Use the product with caution.
- Keep the exhaust pipe free of foreign objects.
- Do not touch the spark plug and the ignition cable when starting and operating the engine.
- Disconnect the spark plug wire and keep the wire away from the plug to prevent accidental starting. Avoid dangerous environments.

#### **⚠ CAUTION**

Water blasting any asbestos-containing material, including asbestos oil, is illegal.

### **FUEL AND REFUELLING**

- Add fuel before starting the engine. Never remove the cap of the fuel tank or add fuel while the engine is running or when the engine is hot.
- Always refuel outdoors. Never refuel indoors or in a poorly ventilated area.
- If the fuel tank has to be drained, do this outdoors.
- To reduce the risk of fire and burn injury, handle the fuel with care. It is highly flammable.
- Do not smoke while handling fuel.
- Loosen the fuel cap slowly to release pressure and to keep the fuel from escaping around the cap.
- Replace all fuel tank and container caps securely.
- Wipe spilled fuel from the product. Move 9 m (30 feet) away from refuelling site before starting engine.

- If fuel is spilled, do not attempt to start the engine. Move the product away from the area of spillage and avoid creating any source of ignition until fuel vapours have dissipated.
- Store fuel in a cool, dry, and well-ventilated area, safely away from spark and/or flame-producing equipment. Store fuel in containers specifically designed for this purpose.
- After stopping the engine, always pull the trigger on the trigger handle to relieve stored pressure in the high-pressure hose. Failure to do so could result in serious personal injury.

### **TRANSPORTATION AND STORAGE**

#### **⚠ CAUTION**

Mind the weight of the product when selecting the storage location and during transportation to prevent accidents or injuries.

- Store the engine and allow the product to cool down. Disconnect the product from the water supply before storing or transporting. Never place the product in any position other than upright.
- Drain all fuel from the tank into a container approved for petrol. Remember to properly replace and tighten the fuel cap.
- Run the engine until it stops. This will remove all fuel that could become stale and leave varnish and gum in the fuel system.
- Remove water from all hoses and the pump, and empty the detergent tank before storing the product.
- Clean all foreign materials from the product. Store it in a cool, frost-free, dry, and well-ventilated place that is inaccessible to children. Keep away from corrosive agents such as garden chemicals and de-icing salts. Do not store outdoors.
- For transportation in a vehicle, secure the product against movement or falling to prevent injury to persons or damage to the product.
- Never carry or transport the product while the engine is running.
- Abide all government and local regulations for the safe storage and handling of petrol.

## MAINTENANCE

### ⚠ WARNING

Use only original manufacturer's replacement parts, accessories, and attachments. Failure to do so can cause possible injury and poor performance, and may void your warranty.

### ⚠ WARNING

Servicing requires extreme care and knowledge and should be performed only by a qualified service technician. For service, have the product serviced by an authorised service centre. When servicing, use only original replacement parts.

- Stop the engine and allow the product to cool down. Disconnect the product from the water supply and relieve store pressure in the high-pressure hose before:
  - cleaning the product
  - changing accessories
  - maintaining the product
  - replacing spare parts
- You may make adjustments or repairs described in this manual. For other repairs, contact an authorised service centre.
- Regularly inspect and maintain the high-pressure cleaner for safe operation. RYOBI recommends inspecting the product every 3 months.
- Check all nuts, bolts, and screws at frequent intervals for proper tightness to ensure the product is in safe working condition. Any part that is damaged should be properly repaired or replaced by an authorised service centre.

## RESIDUAL RISKS

Even when the product is used as prescribed, it is still impossible to completely eliminate certain residual risk factors. The following hazards may arise in use and the operator should pay special attention to avoid the following:

- Injury caused by the high-pressure jet
  - Avoid pointing the high-pressure jet to people, animals, and to yourself.
- Injury caused by kickback

– Always hold the trigger handle or the trigger wand firmly with your two hands.

- Injury caused by inhalation of poisonous gas and aerosols.
  - Wear appropriate respiratory mask.
- Injury caused by exposure to noise
  - Wear ear protection.

## RISK REDUCTION

It has been reported that vibrations from handheld tools may contribute to a condition called Raynaud's Syndrome. Symptoms may include tingling, numbness, and blanching of the fingers, usually apparent upon exposure to cold. Hereditary factors, exposure to cold and dampness, diet, smoking, and work practices are all thought to contribute to the development of these symptoms. There are measures that can be taken by the operator to possibly reduce the effects of vibration:

- Keep your body warm in cold weather. When operating the product, wear gloves to keep the hands and wrists warm.
- After each period of operation, exercise to increase blood circulation.
- Take frequent work breaks. Limit the amount of exposure per day.

If you experience any of the symptoms of this condition, immediately discontinue use and see your physician.

### ⚠ WARNING

Injuries may be caused, or aggravated, by prolonged use of a tool. When using any tool for prolonged periods, ensure you take regular breaks.

## FEATURES

### KNOW YOUR PRESSURE WASHER

See page 15.

The safe use of this product requires an understanding of the information on the tool and in this operator's manual as well as a knowledge of the project you are attempting. Before use of this product, familiarize yourself with all operating features and safety rules.

## NOZZLE KIT

Soap nozzle, 0 DEG, 25 DEG, and 40 DEG spray nozzle.

## FUEL TANK

This fuel tank has a maximum capacity of 1.2L (0.32 US gal). Use unleaded automotive fuel in the engine.

## FUEL VALVE

The fuel valve must be open to start the engine and should always be closed before storing the machine.

## HOSE STORAGE

Once the high pressure hose is rolled, hang it on the back of the machine using the hook-and-loop strap to secure in place.

## ON/OFF SWITCH

The on/off switch is used in combination with the starter grip and rope to start the engine. It is also used to turn the engine off.

## STARTER GRIP WITH ROPE

The starter grip with rope is pulled to start the machine.

## SPARK ARRESTOR

This engine is factory equipped with a spark arrestor. In some areas it is illegal to operate an engine without a spark arrestor.

## THERMAL RELIEF VALVE

This pump feature will prevent water temperatures from reaching harmful levels by releasing a small amount of water. Once the water has drained, the thermal relief valve will reset itself.

## TRIGGER HANDLE

The trigger handle has a gripping surface that provides added control of the spray wand and helps reduce fatigue.

## TRIGGER WITH LOCK OUT

Squeezing the trigger releases a stream of water for high pressure cleaning. The lock out provides protection against unauthorised use.

## ASSEMBLY

### UNPACKING

The product requires assembly. Carefully remove the product and the accessories from the box. Make sure that all items listed in the "What's in the box" section are included.

### ⚠ WARNING

Do not use the product if any parts in the "What's in the box" section are already assembled to your product when you unpack it. The parts on the list are not assembled to the product by the manufacturer and require customer installation. Use of a product that may have been improperly assembled could result in serious personal injury.

**NOTE:** The product is heavy. To avoid back injury, lift the product with your legs, not with your back, and get help when needed.

- Inspect the product carefully to make sure no breakage or damage occurred during shipment.
- Do not discard the packing material until you have carefully inspected and satisfactorily operated the product.

### WHAT'S IN THE BOX

See page 14.

- High pressure cleaner **x 1**
- Trigger handle **x 1**
- Nozzle kit **x 1**
- Spray wand **x 1**
- Trigger handle holder **x 1**
- Spray wand holder **x 1**
- Hose storage **x 1**
- Screw (1/4-20 x 2.1 in., Phillips head) **x 1**
- Screw (1/4-20 x 1.85 in., Phillips head) **x 2**
- Hex nut (1/4-20 in.) **x 3**
- Flat washer **x 1**
- High-pressure hose 10.6 m (35 ft.) **x 1**
- Operator's manual **x 1**

### TOOLS NEEDED

The following tools are not included in the package but are needed for the assembly:

- 7/16 in. wrench
- Phillips head screwdriver

**⚠ WARNING**

If any part is damaged or missing, do not operate the product until the part is replaced. Using the product with damaged or missing parts could result in serious personal injury.

**⚠ WARNING**

Do not attempt to modify the product or create accessories not recommended for use with the product. Such alteration or modification is a misuse and could result in a hazardous condition leading to possible serious personal injury.

**⚠ WARNING**

To prevent accidental starting that could cause serious personal injury, always disconnect the engine spark plug wire from the spark plug when assembling parts.

**OPERATION**

**⚠ WARNING**

Do not allow familiarity with the product to make you careless. Remember that a careless fraction of a second is sufficient to inflict serious injury.

**⚠ WARNING**

Always wear eye protection with side shields marked to comply with EN 166. Failure to do so could result in objects being thrown into your eyes resulting in possible serious injury.

**⚠ WARNING**

Do not use any attachments or accessories not recommended by the manufacturer of the product. The use of attachments or accessories not recommended can result in serious personal injury.

**⚠ WARNING**

Never direct a water stream toward people or pets, or any electrical device. Failure to heed this warning could result in serious injury.

**ADDING LUBRICANT TO THE ENGINE**

See page 17 (step 11).

**NOTE:** You must add lubricant to the engine before starting it for the first time.

**⚠ WARNING**

Any attempt to start the engine without adding lubricant will result in engine failure.

**NOTE:** The lubricant level is checked without screwing the dipstick in. The engine has a total lubricant capacity of 0.6 L (20 oz.).

**ETHANOL-BLENDED FUELS**

Do not use E85 fuel. It will void your warranty.

**NOTE:** Fuel system damage or performance problems resulting from the use of an oxygenated or ethanol-blended fuel containing more than the percentages of oxygenates stated below are not covered under warranty.

Petrol containing up to 10% ethanol by volume (commonly referred to as E10) is acceptable. E85 is not.

**ADDING PETROL TO THE FUEL TANK**

See page 17 (step 12).

**⚠ WARNING**

Petrol and its vapours are highly flammable and explosive. To prevent serious personal injury and property damage, handle the gasoline with care. Handle the fuel outdoors, keep it away from ignition sources, do not smoke while adding fuel, and wipe up spills immediately.

**⚠ WARNING**

Always shut off the engine before refuelling. Never add fuel to a product with a running or hot engine. Move at least 9 m (30 ft.) from the refuelling site before starting the engine. Do not smoke, and stay away from open flames and sparks. Failure to follow these instructions could result in serious personal injury.

When adding petrol to the high pressure cleaner, make sure the product is sitting on a flat, level surface. If the engine is hot, let the high pressure cleaner cool before adding petrol. Always fill the fuel tank outdoors with the product turned off.



**NOTE:** Use unleaded 91 or higher petrol only. Do not mix lubricant with petrol.

**FUEL FILTER**

The fuel supplied to the engine is passed through a filter to remove any contaminants from entering the engine. Contaminants in the fuel can cause poor performance and damage to the engine.

The fuel filter is a non-serviceable item and, if needed, should be replaced by an authorised service centre.

**STARTING/STOPPING THE ENGINE**

See page 21.

**⚠ WARNING**

Do not run the high pressure cleaner pump without water supply connected and turned on, as this may damage the high pressure seals and decrease the pump life. Completely unwind the hose from its reel or coil and make sure the hose is not being restricted by tires, rocks, or any other objects that may lessen or prevent water flow to the high pressure cleaner.

**⚠ WARNING**

If the engine does not start after each pull, squeeze the trigger to relieve water pressure before attempting to start the engine again.

**⚠ WARNING**

Hold the handle and wand securely with both hands. Expect the trigger handle to move when the trigger is pulled due to reaction forces. Failure to do so could cause loss of control and injury to yourself and others.

**⚠ WARNING**

While operating and storing, keep at least 1m (3 feet) of clearance on all sides of the product, including overhead. Allow a minimum of 30 minutes of “cool down” time before storage. Heat created by muffler and exhaust gases may be hot enough to cause serious burns and/or ignite combustible objects.

**INSTALLING/REMOVING NOZZLES**

See page 23 - 30.

**⚠ WARNING**

Never change nozzles or spray patterns without locking the lock out on the trigger handle. Never point the wand to yourself or other persons. The quick-connect feature contains small springs that could eject the nozzle with some force. Failure to heed this warning could cause personal injury.

**USING THE SPRAY NOZZLE AND SOAP NOZZLE**

See pages 23 - 30.

For the most effective cleaning, the spray nozzle should be between 200 mm (8 in.) and 600 mm (24 in.) from the surface to be cleaned. If the spray is too close it can damage the cleaning surface.

**Nozzle Application**

- |     |   |
|-----|---|
| 0°  | <p>Spot cleaning of high, hard-to-reach areas</p> <ul style="list-style-type: none"> <li>■ Removing caked-on mud from heavy construction, farm, or lawn equipment</li> <li>■ Cleaning tar, glue, or stubborn stains from concrete</li> <li>■ Cleaning overhead areas</li> <li>■ Removing rust from steel and oxidation from aluminum</li> </ul>         |
| 25° | <p>For general purpose or large surfaces</p> <ul style="list-style-type: none"> <li>■ General cleaning of dirt, mud, and grime</li> <li>■ Cleaning roofs, gutters, and downspouts</li> <li>■ Removing light mildew stains</li> <li>■ Removing algae and bacteria build-up from pools</li> <li>■ Rinsing surfaces in preparation for painting</li> </ul> |
| 40° | <p>For wide-angle rinsing</p> <ul style="list-style-type: none"> <li>■ Light cleaning and washing</li> <li>■ Washing and rinsing of painted surfaces and boats</li> <li>■ Cleaning roofs, windows, patios, and driveways</li> </ul>   |

Soap  
short  
range

For short range detergent applications

- Driveways, walkways, decks and patios, vehicles, fences, paint prep, patio furniture, and lawn equipment

## USING THE HIGH-PRESSURE HOSE

The high-pressure hose features an outer covering that provides strength to the hose. If the outer covering becomes damaged, the hose must be replaced immediately. **Do not use a high-pressure hose if the outer covering is damaged.**

### To prevent damage to the outer covering:

- Inspect the hose before every use.
- Fully unwrap and straighten the hose before use.
- Do not allow the high-pressure hose to be kinked.
- Keep the hose away from hot surfaces and sharp edges.
- Do not pull the product by using the high-pressure hose.
- Do not allow the hose to be crushed or wrapped around objects.

## WASHING WITH DETERGENT

See page 31.

Use only detergents designed for high pressure cleaners. Household detergents, acids, alkalines, bleaches, solvents, flammable material, or industrial grade solutions can damage the pump. Many detergents may require mixing prior to use. Prepare the cleaning solution as instructed on the solution bottle.

**NOTE:** Spray the detergent on a dry surface using long, even, overlapping strokes. To prevent streaking, do not allow detergent to dry on the surface.

### Before shutting off the engine:

- Remove the soap nozzle, and install the 40 DEG spray nozzle. See the "Installing/removing nozzles" section.
- Flush for 1 - 2 minutes (spray clear water through the spray wand).
- Shut off the engine.

**NOTE:** Shutting off (O) the engine will not relieve pressure in the system. Squeeze the

trigger to release the water pressure.

## RINSING WITH THE HIGH PRESSURE CLEANER

- Turn off the high pressure cleaner and shut off the water supply. Squeeze the trigger to release water pressure.
- Engage the lock out on the trigger handle by pushing up on the lock out until it clicks into the slot.
- Install the spray nozzle with either the [40°], [25°], or [0°] setting depending on the job. Refer to the chart in the "Using the spray nozzle and soap nozzle" section to determine which setting is correct for your application.
- When using these settings, test a small area first to avoid surface damage.
- Start at the top of the area to be rinsed and work down, overlapping the strokes.

## MOVING THE HIGH PRESSURE CLEANER

See page 32.

**NOTE:** Never lift or carry the product using the handle and never place it in any position other than upright on its wheels.

## MAINTENANCE

### GENERAL MAINTENANCE

Avoid using solvents when cleaning plastic parts. Most plastics are susceptible to damage from various types of commercial solvents and may be damaged by their use. Use clean a cloth to remove dirt, dust, lubricant, and grease.

### ⚠ WARNING

Do not at any time let brake fluids, gasoline, petroleum-based products, and penetrating lubricants come in contact with plastic parts. Chemicals can damage, weaken or destroy plastic which may result in serious personal injury.

Only the parts shown on the parts list are intended to be repaired or replaced by the customer. All other parts should be replaced at an authorised service centre.

Before running the engine, perform the following steps:

- Check to ensure that all nuts, bolts, and other fasteners, are securely tightened.

- Make sure the air filter is clean.
- Check both the engine lubricant level and the fuel tank level. Refill as needed.
- Inspect the work area for hazards.
- If there is excessive noise or vibration, stop the product immediately.

### NOZZLE MAINTENANCE

Excessive pump pressure (a pulsing sensation felt while squeezing the trigger) may be the result of a clogged or dirty nozzle.

- Turn off the high pressure cleaner and shut off the water supply. Squeeze trigger to release water pressure.
- Remove the nozzle from the spray wand.  
**NOTE:** Never point the spray wand to yourself and others.
- Using a straightened paper clip or nozzle cleaning tool (not provided), free any foreign materials clogging or restricting the nozzle.
- Using a garden hose, flush debris out of the nozzle by back flushing (running the water through the nozzle backwards or from the outside to the inside).
- Reconnect the nozzle to the spray wand.
- Turn on the water supply and start the engine.

### CLEANING THE AIR FILTER

See pages 33-34.

A dirty air filter will cause starting difficulty, loss of performance, and shorten the life span of the engine. Check the air filter monthly. For best performance, replace the air filter at least once a year.

### REPLACING THE SPARK PLUG

See page 35.

- Clean the area around the base of the spark plug before removing to keep dirt and debris out of the engine. Remove spark plug.
- Clean the carbon deposits on the spark plug electrode using a plug cleaner or wire brush. Replace the plug if worn. To replace the spark plug, see page 34. Use spark plug model BPR7HS (NGK) or equivalent.
- Check electrode gap. The gap should be 0.7- 0.8 mm (0.03 in.). Adjust the gap, if necessary, by carefully bending the ground electrode.

- Reinstall spark plug and tighten securely.

### CHANGING THE ENGINE LUBRICANT

See page 36.

**NOTE:** Drain the lubricant while the engine is still warm but not hot. Warm lubricant will drain quickly and more completely.

**NOTE:** Consult hazardous waste management guidelines in your area for the proper way of used lubricant disposal.

### PUMP LUBRICATION

The pump used in the high pressure cleaner was lubricated with a sufficient amount of high grade lubricant for the life of the product under normal operating conditions. Therefore, no further lubrication is required.

### SYMBOLS ON THE PRODUCT



Safety alert



Read and understand all instructions before operating the product, follow all warnings and safety instructions.



Wear full eye and ear protection.



To reduce the risk of injury from kickback, hold the spray wand securely with both hands when the product is on.



Never point the spray wand to people, animals, the machine body, power supply, or any electric appliances.



The product is not suitable for connection to the drinking water mains.



Burst hazard



To reduce the risk of injury from high-pressure injection, do not direct spray at people or animals.



Failure to use in dry conditions and to observe safe practices can result in electric shock.



Petrol products emit carbon monoxide, an odourless, colourless, and poisonous gas. Breathing carbon monoxide can cause nausea, fainting, or death.



Fuel and its vapours are extremely flammable and explosive. Fire can cause severe burns or death.



To reduce the risk of injury or damage, avoid contact with any hot surface.



Do not mix lubricant with petrol.



Use only petrol with 0 to 10% ethanol.



Release the handle.



Check the engine oil level.



Never use bleach or solvent-based detergent.



Detergent dilution ratio



Do not use the product indoors



Add engine oil here.



Regulatory Compliance Mark (RCM). This product meets applicable regulatory requirements.



The guaranteed sound pressure level is 94.5 dB. The guaranteed sound power level is 111 dB.



Waste electrical products should not be disposed of with household waste. Please recycle where facilities exist. Check with your local authority or retailer for recycling advice.

## SYMBOLS IN THIS MANUAL



Parts or accessories sold separately



Note



Warning



Wear non-slip, heavy-duty gloves.

The following signal words and meanings are intended to explain the levels of risk associated with the product.

### DANGER

Indicates an imminently hazardous situation, which, if not avoided, will result in death or serious injury.

### WARNING

Indicates a potentially hazardous situation, which, if not avoided, could result in death or serious injury.

### CAUTION

Indicates a potentially hazardous situation, which, if not avoided, may result in minor or moderate injury.

### CAUTION

Without safety alert symbol

Indicates a situation that may result in property damage.



## MAINTENANCE SCHEDULE

	Before each use	After first month or 20 hours of operation	Every 3 months or 50 hours of operation	Every year or 100 hours of operation	Every 2 years
Check for leakage and loose parts	■				
Clean engine and check nuts and bolts	■				
Check and refill engine lubricant	■				
Check water inlet filter placement	■				
Change engine lubricant (initial change)		■			
Change engine lubricant			■		
Check spark plug			■		
Clean air filter		■			
Replace air filter element				■	
Clean and adjust spark plug and electrodes		■			
Replace spark plug				■	
Clean spark arrester				■	
Remove carbon from cylinder head**				■	
Check and adjust valve clearance **				■	
Clean and adjust carburetor **				■	
Check fuel lines				■	
Replace fuel lines					■
Check fuel tank cap		■			
Replace fuel tank cap					■

\*\* As for the procedures for these items, consult your nearest YAMAHA authorised service centre.

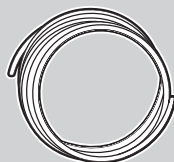
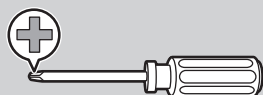
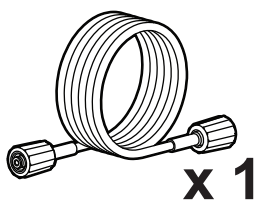
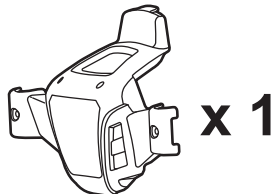
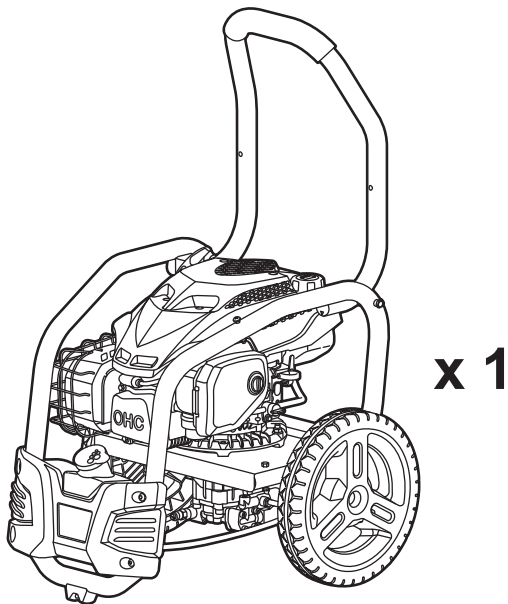
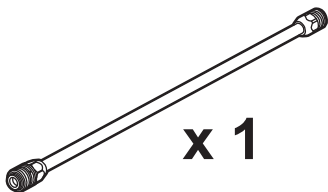
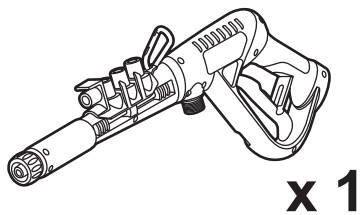
### NOTES:

- Initial lubricant change should be performed after first 20 hours of operation. Thereafter, change lubricant every 50 hours.
- If the water inlet filter is missing or damaged, it must be replaced.
- If you are not sure how to perform any of the maintenance items listed above, take the product to an authorised service centre to have the maintenance item performed.
- Maintenance should be performed more frequently when the product is used in dusty areas.

## TROUBLESHOOTING

Problem	Possible cause	Solution
Engine fails to start.	No fuel in the tank.	Fill the tank.
	The spark plug shorted or fouled.	Replace the spark plug.
	The spark plug is broken (cracked porcelain or electrodes broken).	Replace the spark plug.
	The spark plug wire is shorted, broken, or disconnected from spark plug.	Replace the spark plug wire or attach it to the spark plug.
	Ignition is inoperative.	Contact an authorised service centre.
	Wrong fuel in tank	Only use unleaded 91 or higher petrol.
	Engine flooded	Shut off fuel line, wait 15 min. for fuel to dry.
Engine is hard to start.	There is water in the gasoline.	Drain entire fuel system and refill with fresh fuel.
Engine lacks power.	Weak spark at spark plug	Contact an authorised service centre.
	Dirty air filter	Clean or replace the air filter.
Detergent fails to mix with spray	The detergent injection hose is not properly submerged.	Insert the injection hose into detergent container.
	Inadequate water supply	Provide an adequate water flow.
	The trigger handle or spray wand leaks.	Check connections and/or replace the trigger handle or spray wand.
The pump does not produce pressure.	The nozzle is clogged	Clean the nozzle.
	Pump is faulty	Contact an authorised service centre
	Air in the hose	Squeeze trigger on trigger handle to remove the air from the hose.
	Diameter of garden hose is too small	Replace the hose with a 3/4 in. garden hose.
	The product does not reach high pressure.	Water supply is restricted
Not enough inlet water		Open water source at maximum.

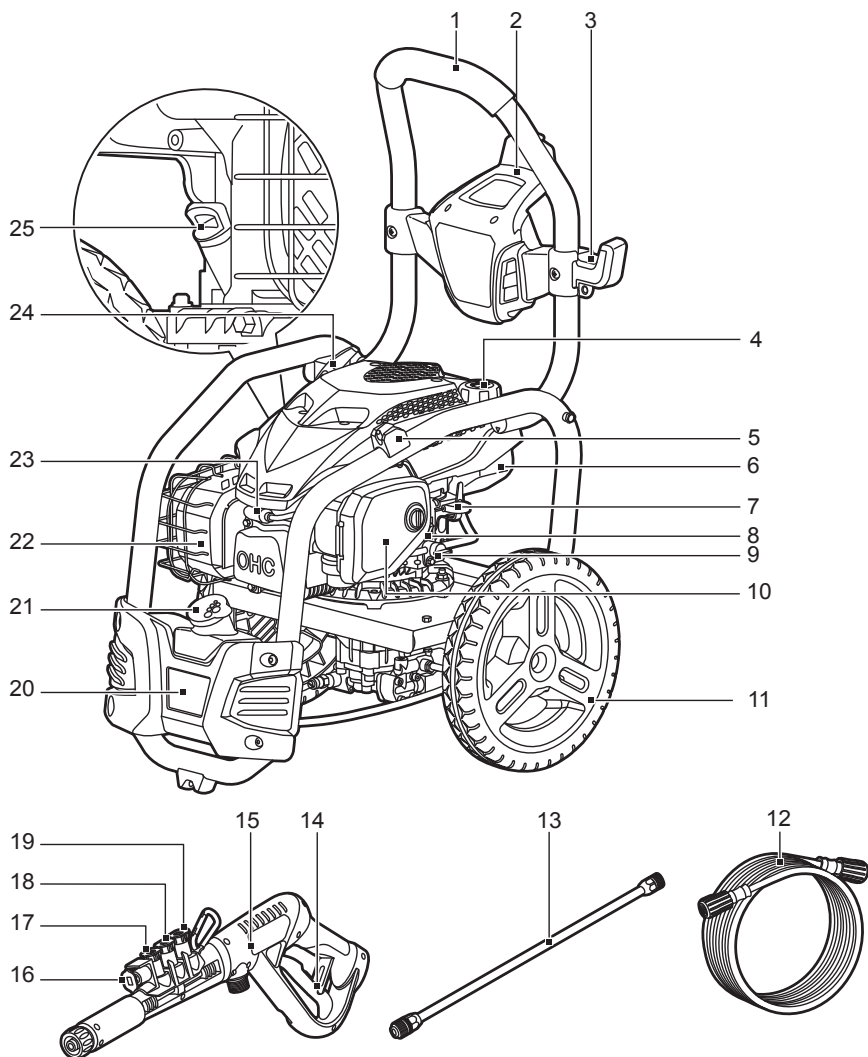
WHAT'S IN THE BOX





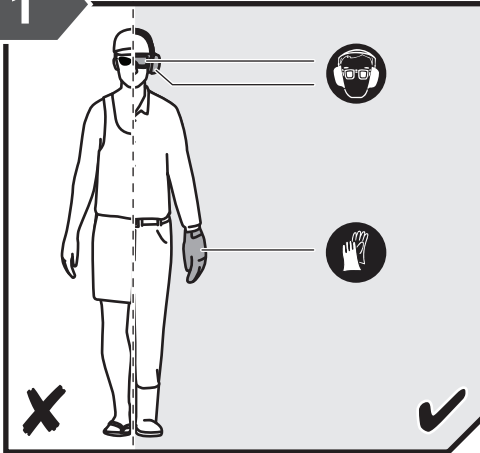
## KNOW YOUR PRODUCT

- |                               |                                 |                            |
|-------------------------------|---------------------------------|----------------------------|
| 1. Handle                     | 11. Wheel                       | 21. Detergent tank cap     |
| 2. High-pressure hose storage | 12. High-pressure hose (10.6 m) | 22. Muffler                |
| 3. Trigger handle holder      | 13. Spray wand                  | 23. Spark plug boot        |
| 4. Fuel cap                   | 14. Trigger lock out            | 24. Starter grip           |
| 5. Spray wand holder          | 15. Trigger handle              | 25. Lubricant cap/dipstick |
| 6. Fuel tank                  | 16. Plastic Soap nozzle         |                            |
| 7. Choke                      | 17. 0 DEG Spray Nozzle          |                            |
| 8. On/off switch              | 18. 25 DEG Spray Nozzle         |                            |
| 9. Fuel valve                 | 19. 40 DEG Spray Nozzle         |                            |
| 10. Air filter cover          | 20. Detergent tank              |                            |



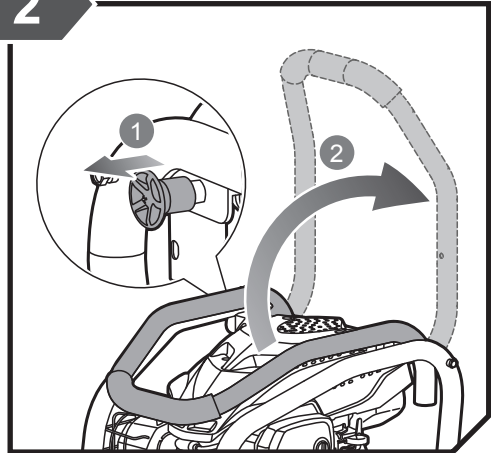
## GETTING STARTED

1



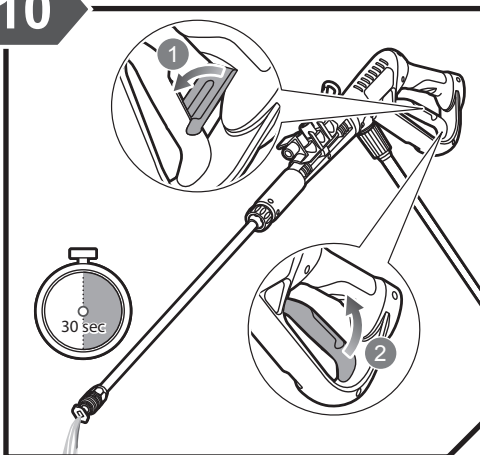
Wear full eye and ear protection, substantial footwear, and long trousers at all times while operating the product. Do not operate the product when barefoot or wearing open sandals.

2



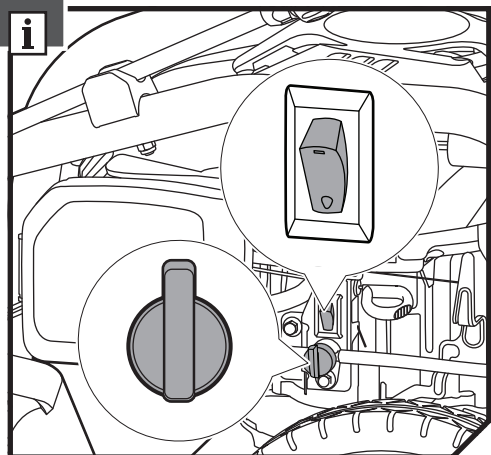
1. To raise the handle, pull the handle release knob out. 2. Pull the handle up until the handle release knob snaps into locking position.

10



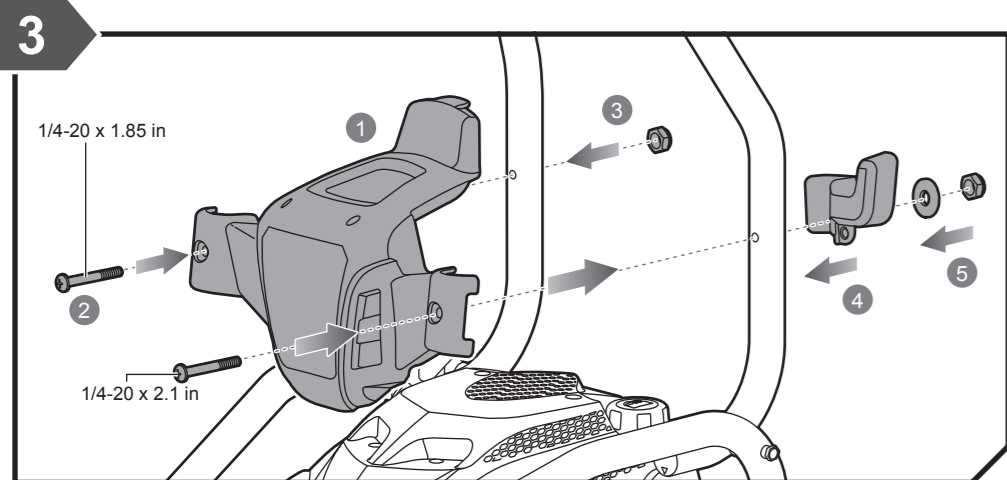
1. Push up the lock out until it clicks into the slot. 2. Squeeze the trigger to relieve air pressure; hold the trigger until a steady stream of water appears.

i



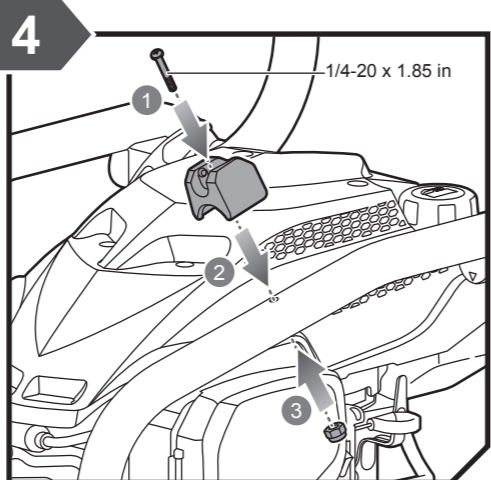
**NOTE:** Always shut off the engine before refuelling. Never add fuel to a product with a running or hot engine.

GETTING STARTED

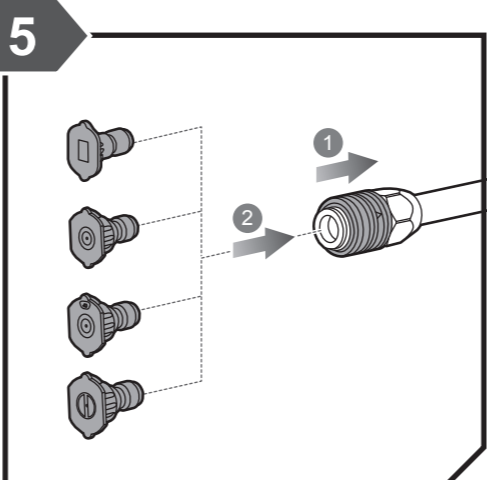


1. Place hose storage onto handle. 2. Align holes in the hose storage with holes in the handle. Insert screw (1/4-20 x 1.85 in.) through holes in the left side. Insert screw (1/4-20 x 2.1 in.) through holes in the right side. 3. Place nut onto the screw (left) and tighten. 4. Place trigger handle holder onto the screw (right). 5. Place washer and nut onto the screw and tighten.

GETTING STARTED

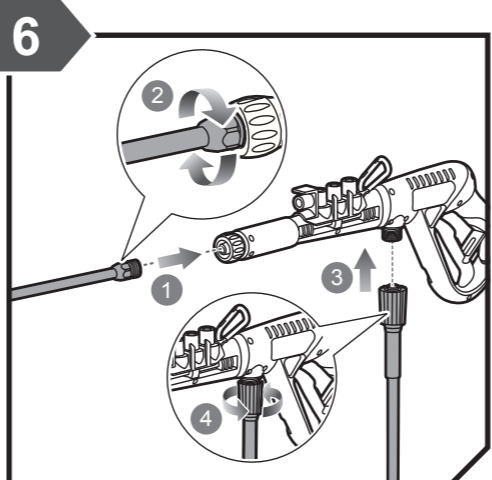


1. Place spray wand holder onto frame. 2. Align holes in both spray wand holder and frame. Insert screw (1/4-20 x 1.85 in.) through holes. 3. Place nut onto screw and tighten.

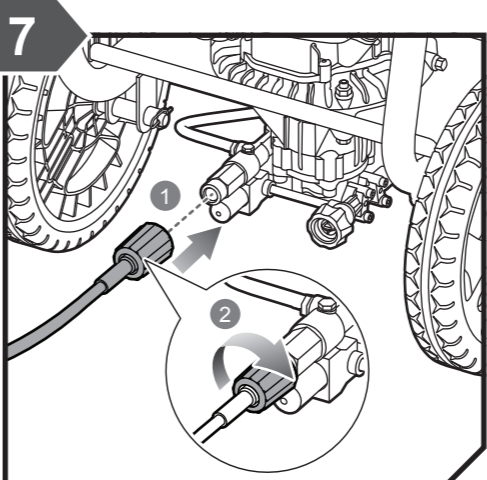


1. Pull back the quick-connect collar. 2. Push the desired nozzle into the quick-connect collar until it clicks into place and is secured properly.

GETTING STARTED

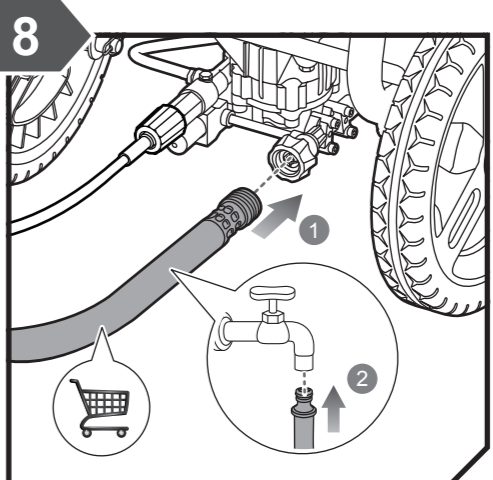


1. Connect threaded end of spray wand to the trigger handle. 2. Turn connector clockwise to secure spray wand. 3. Connect high-pressure hose to trigger handle inlet coupler. 4. Turn the hose collar counterclockwise to secure hose.

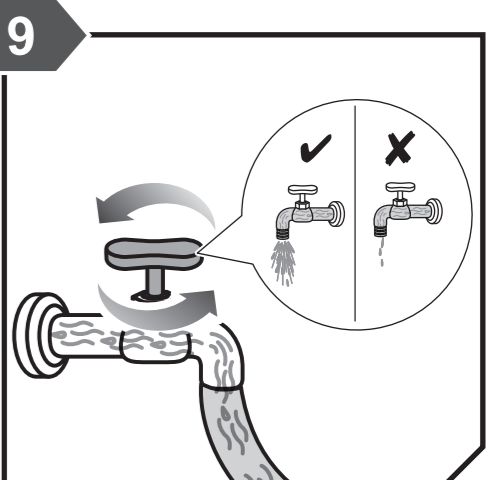


1. Connect collar of the high-pressure hose to threaded nipple on the pump. 2. Turn the collar clockwise to tighten the hose securely to the pump.

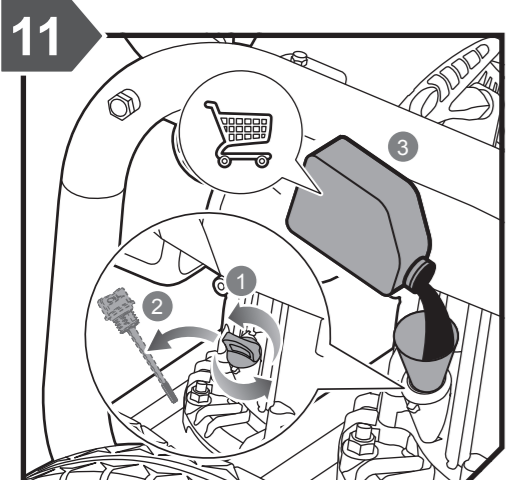
GETTING STARTED



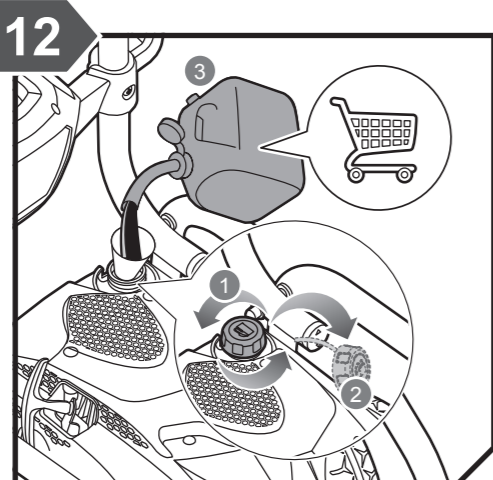
1. Connect threaded hose coupler to the high-pressure cleaner water intake and tighten. 2. With the garden tap completely off, attach the end of the garden hose adapter (not supplied) to hose coupler.



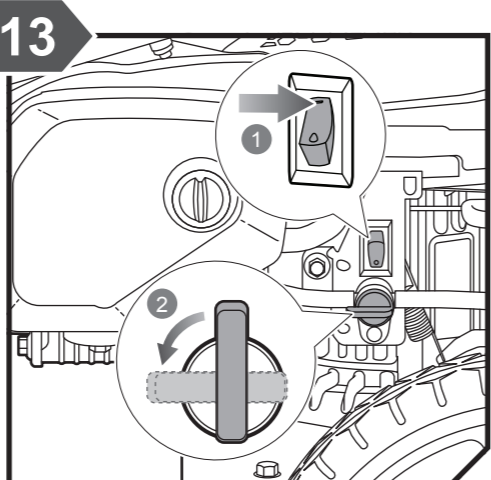
Turn on the water supply.



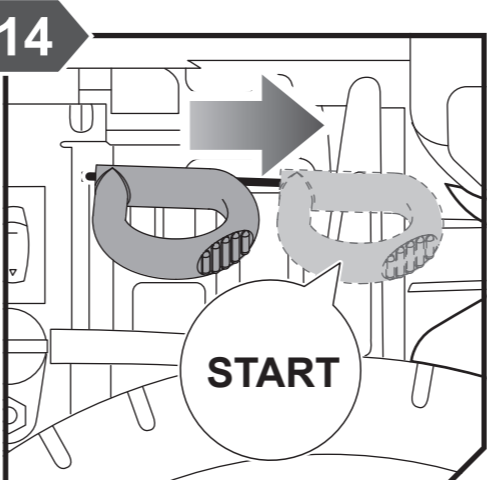
1. Turn the dipstick counterclockwise to open. 2. Remove the dipstick. 3. Fill the engine with 4-stroke engine lubricant (SAE 10W-30) until the fluid level rises to the upper portion of the hatched area on the dipstick. Replace the dipstick and tighten securely.  
**NOTE:** Check the engine oil. When the dipstick oil cap is placed inside the filler, **do not re-thread**. The oil should be visible between the minimum and maximum marks.



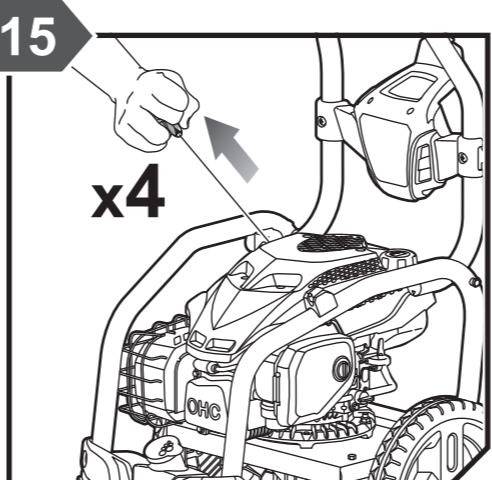
1. Turn the fuel cap counterclockwise to open. 2. Remove the fuel cap. 3. Insert a clean funnel into the fuel tank then slowly pour the fuel into the tank (1.2 L) to approximately 40 mm (1-1/2 in.) below the top of the tank neck.  
**NOTE:** Check the fuel. Always use fresh, unleaded (91 or higher) fuel. Fuel without fuel stabiliser added to it begins to turn stale from 30 days onwards.



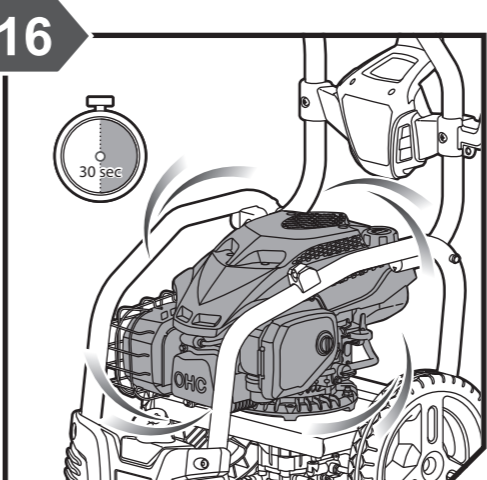
1. Turn the on/off switch to the ON position. 2. Turn the fuel valve to the ON (horizontal) position.



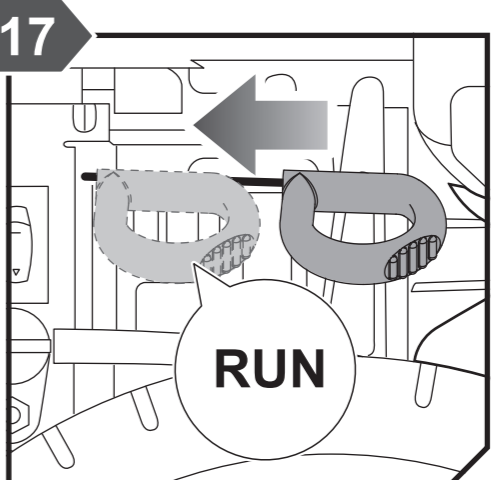
Pull choke to START position.



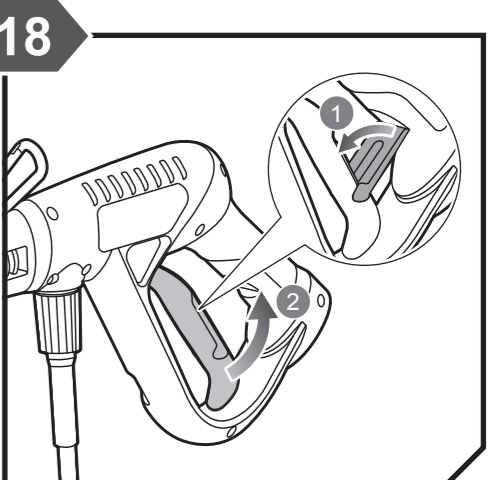
Grasp the starter grip and pull slowly until you feel the resistance. Give the starter grip a short, brisk pull to start the engine.



Let the engine run for several seconds, then gradually slide the choker lever fully toward the RUN position.



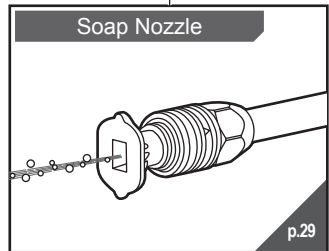
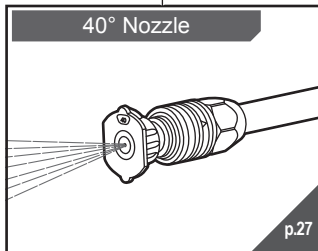
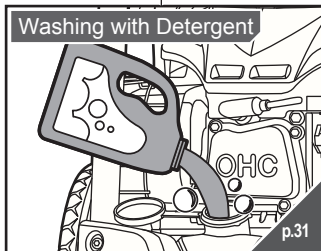
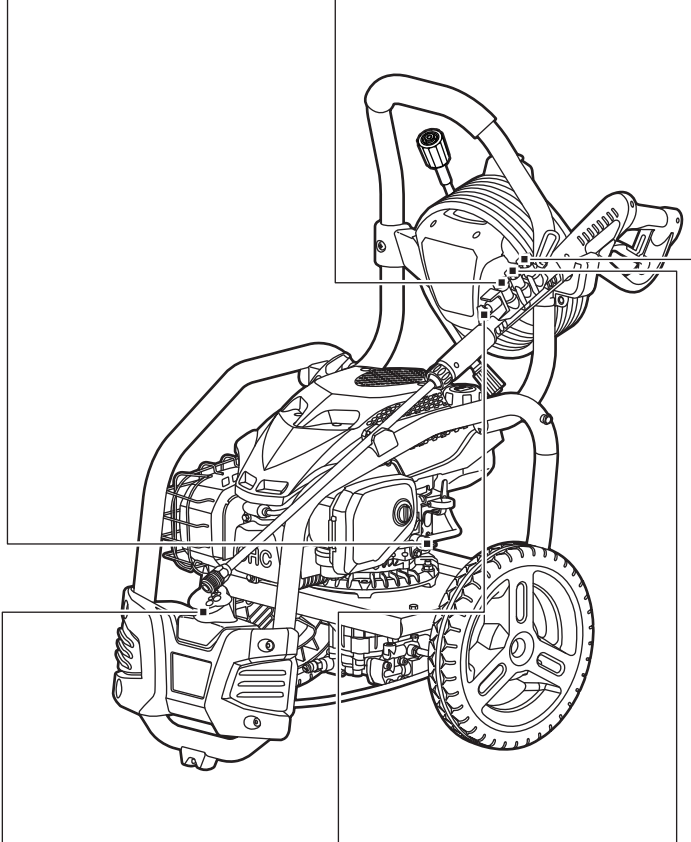
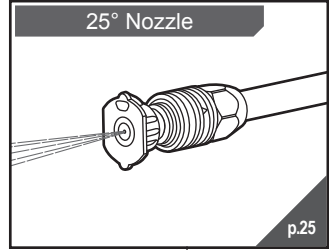
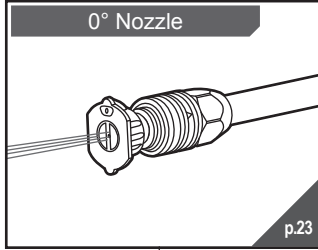
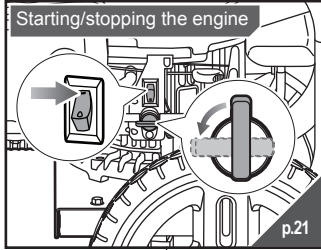
Push choke into the RUN position.



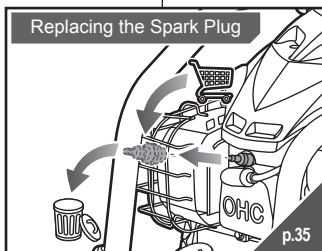
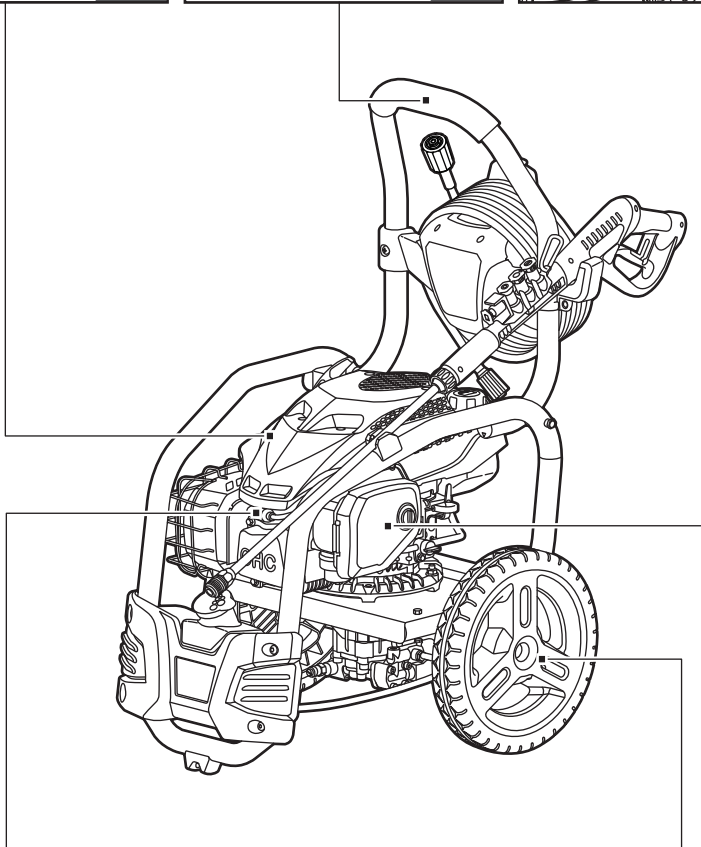
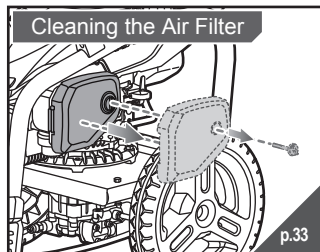
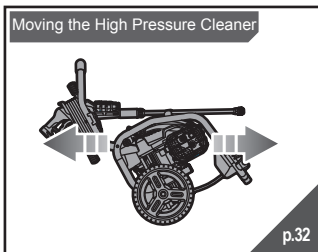
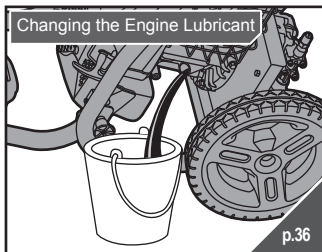
1. Push up the lock out until it clicks into the slot. 2. Squeeze the trigger to operate the high pressure cleaner.



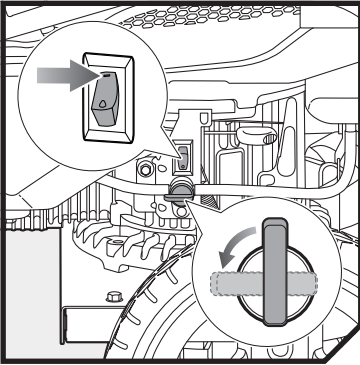
OVERVIEW



# OVERVIEW

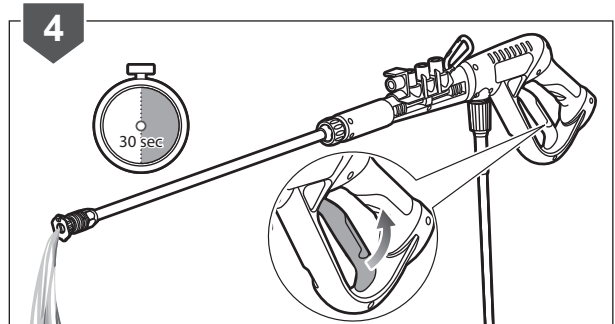
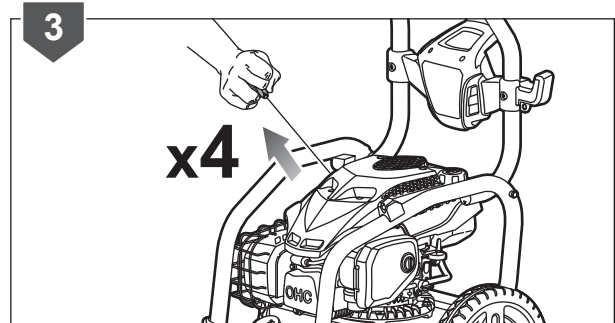
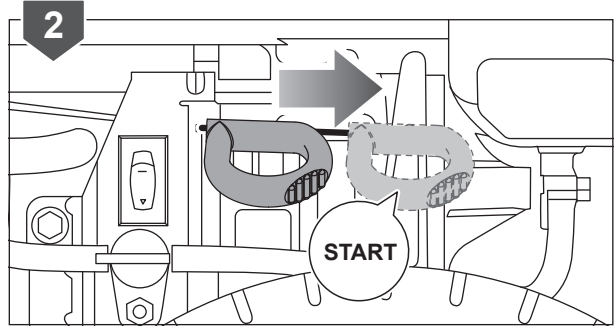
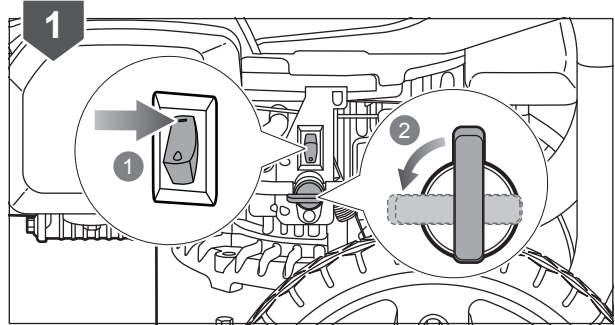


## OPERATION



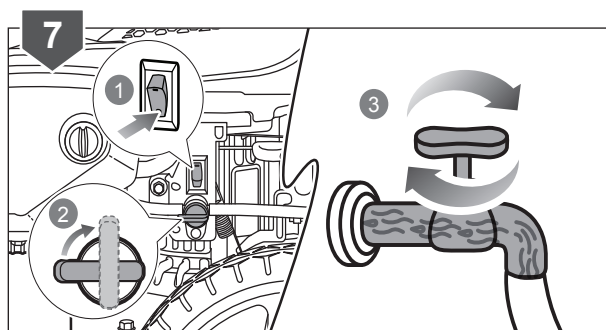
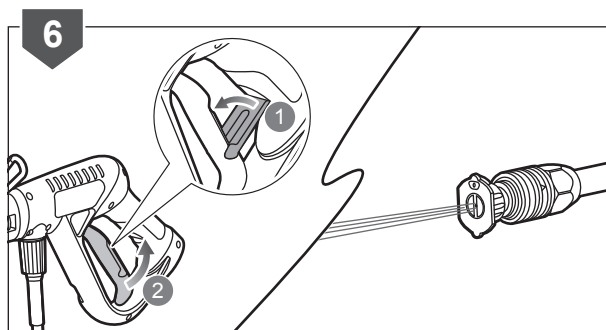
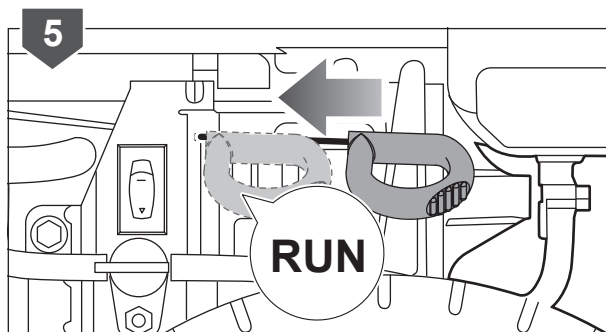
### STARTING/STOPPING THE ENGINE

1. Turn the on/off switch to the ON position. Turn the fuel valve to the ON (horizontal) position.
2. Pull choke into the START position.
3. Grasp the starter grip and pull slowly until you feel the resistance. Give the starter grip a short, brisk pull to start the engine.
4. Run water through the hose for 30 seconds to clean any debris from the hose.



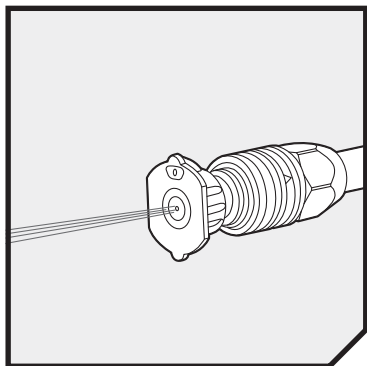
## OPERATION

5. Push choke into the RUN position.
6. Push up the lock out until it clicks into the slot. Squeeze the trigger to operate the high pressure cleaner.
7. To stop the high pressure cleaner, turn the on/off switch to the OFF (vertical) position. Turn the fuel valve to the OFF (vertical) position. Turn off the water supply.



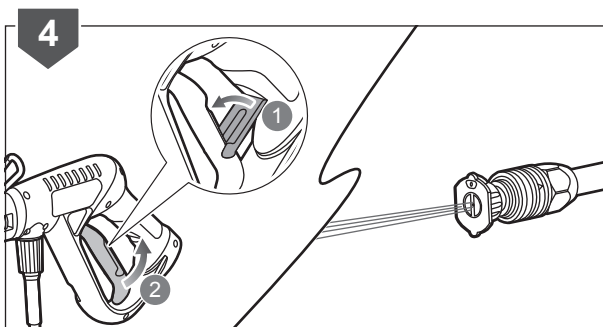
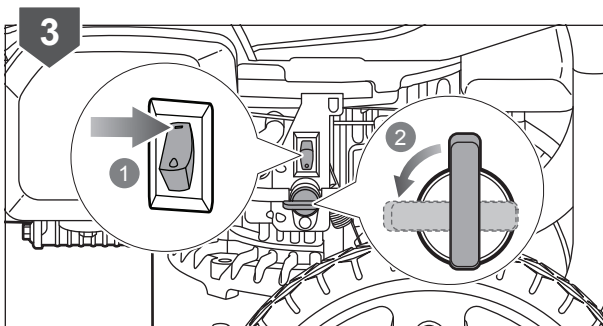
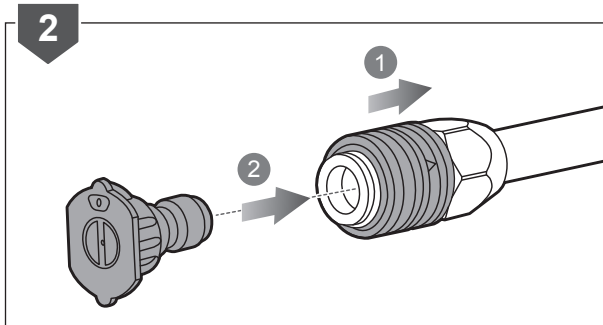
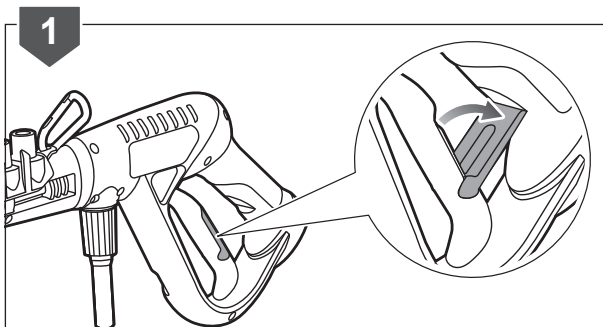


## OPERATION



### 0° NOZZLE

1. Engage the lock out on the trigger handle by pushing down on the lock out until it clicks into the slot.
2. Pull back the quick-connect collar. Push the 0° nozzle into the quick-connect collar until it clicks into place and is secured properly.
3. Start the high pressure cleaner. Refer to the "Starting/stopping the engine" section.
4. Push up the lock out until it clicks into the slot. Squeeze the trigger to operate the high pressure cleaner.

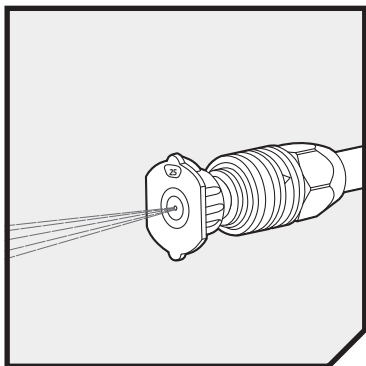


## OPERATION

5. Use the high pressure cleaner with 0° nozzle to clean high, hard-to-reach areas.

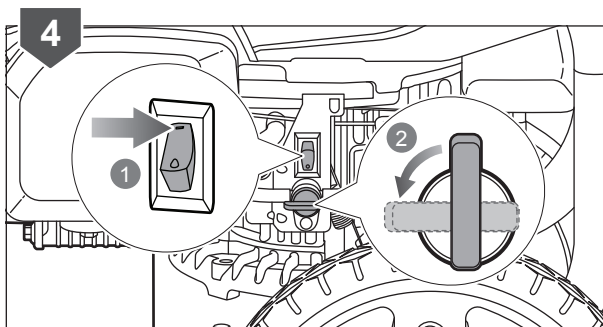
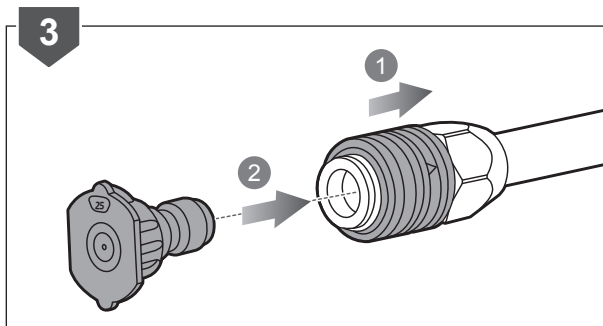
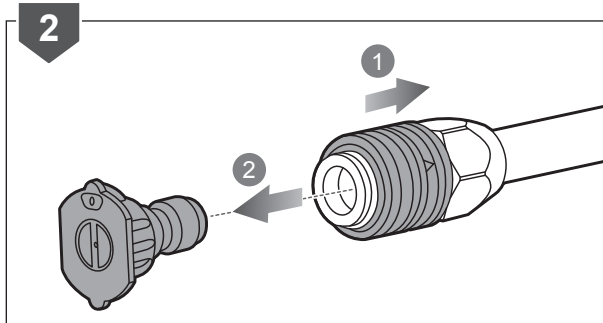
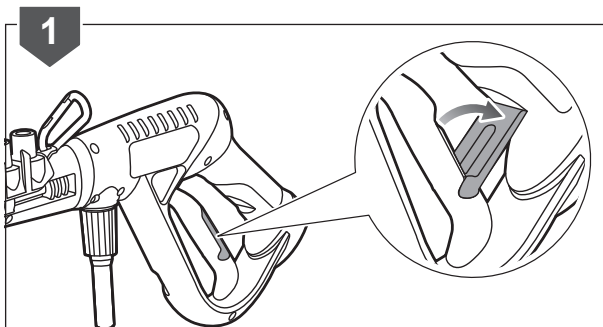


## OPERATION



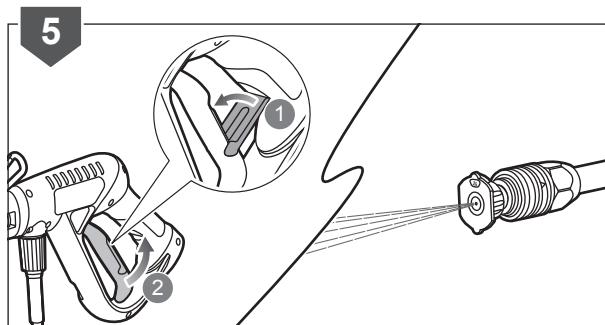
### 25° NOZZLE

1. Engage the lock out on the trigger handle by pushing down on the lock out until it clicks into the slot.
2. Pull back the quick-connect collar. Remove the nozzle from the spray wand.
3. Pull back the quick-connect collar. Push the 25° nozzle into the quick-connect collar until it clicks into place and is secured properly.
4. Start the high pressure cleaner. Refer to the "Starting/stopping the engine" section.

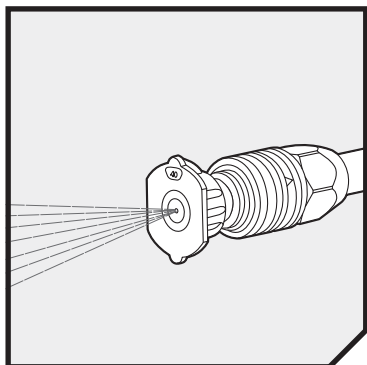


## OPERATION

5. Push up the lock out until it clicks into the slot. Squeeze the trigger to operate the high pressure cleaner.

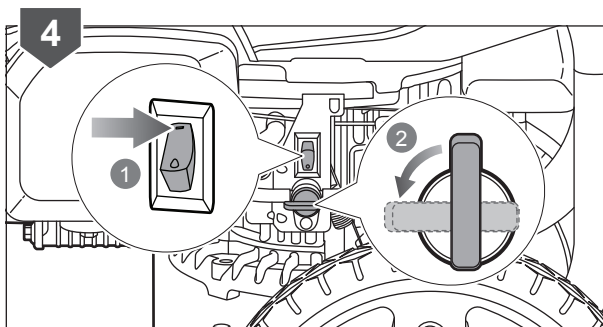
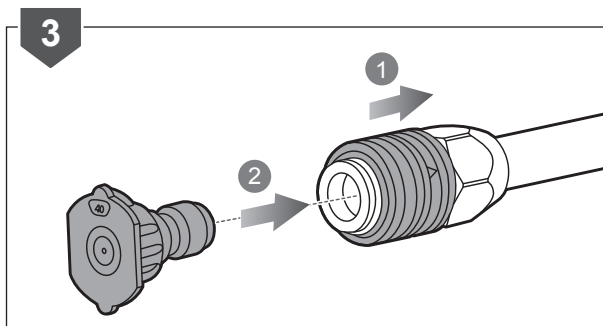
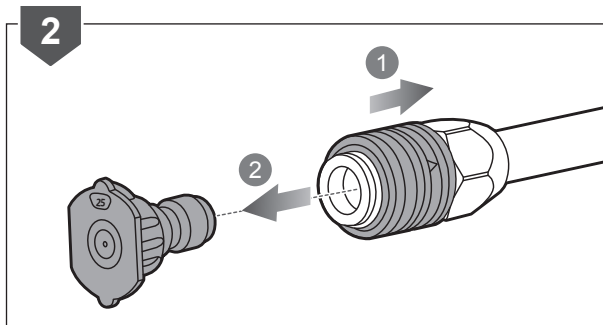
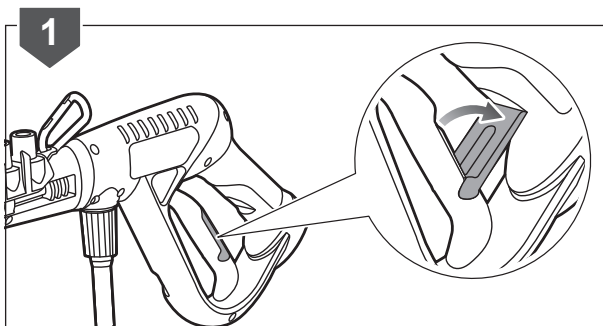


## OPERATION



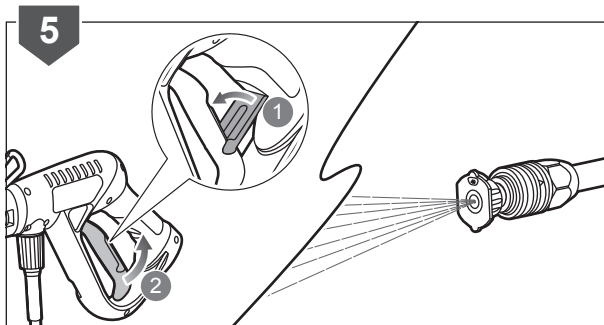
### 40° NOZZLE

1. Engage the lock out on the trigger handle by pushing down on the trigger until it clicks into the slot.
2. Pull back the quick-connect collar. Remove the nozzle from the spray wand.
3. Pull back the quick-connect collar. Push the 40° nozzle into the quick-connect collar until it clicks into place and is secured properly.
4. Start the high pressure cleaner. Refer to the "Starting/stopping the engine" section.

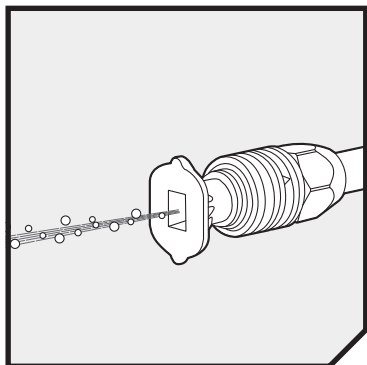


## OPERATION

5. Push up the lock out until it clicks into the slot. Squeeze the trigger to operate the high pressure cleaner.
6. Use the high pressure cleaner with 40° nozzle to clean roofs, windows, patios, and driveways.

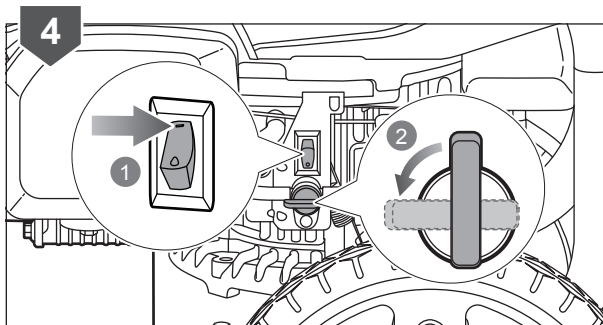
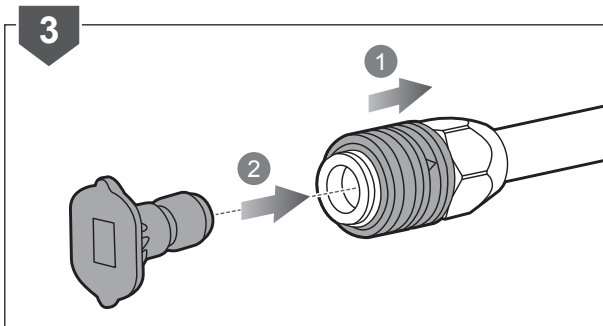
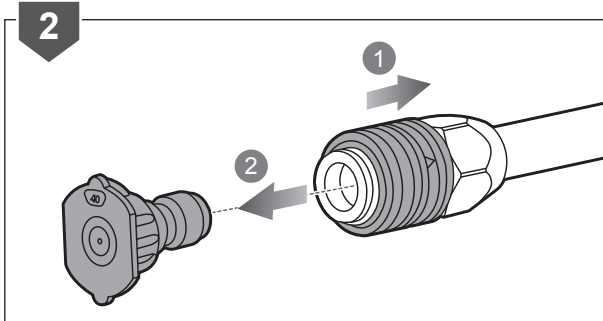
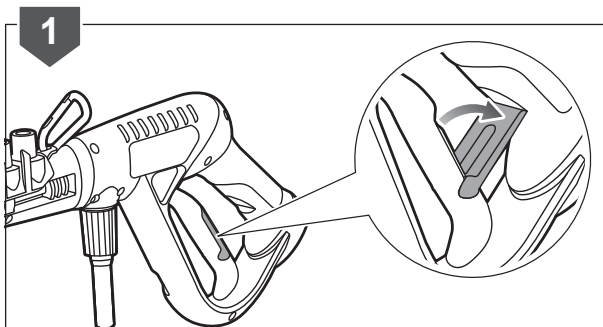


## OPERATION



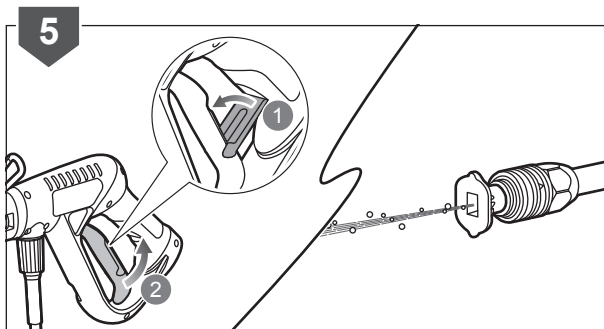
### SOAP NOZZLE

1. Engage the lock out on the trigger handle by pushing down on the lock out until it clicks into the slot.
2. Pull back the quick-connect collar. Remove the nozzle from the spray wand.
3. Pull back the quick-connect collar. Push the soap nozzle into the quick-connect collar until it clicks into place and is secured properly.
4. Start the high pressure cleaner. Refer to the "Starting/stopping the engine" section.



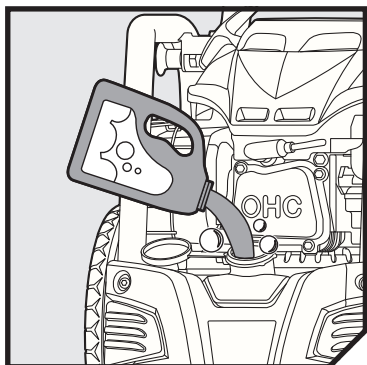
## OPERATION

5. Push up the lock out until it clicks into the slot. Squeeze the trigger to operate the high pressure cleaner.



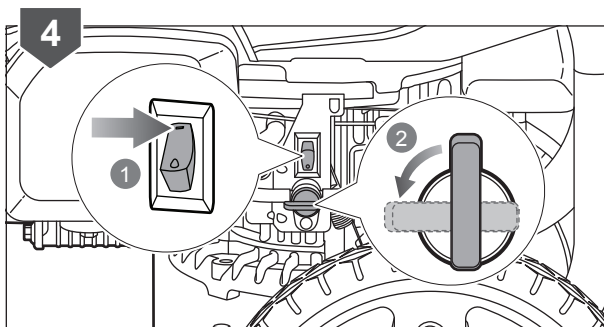
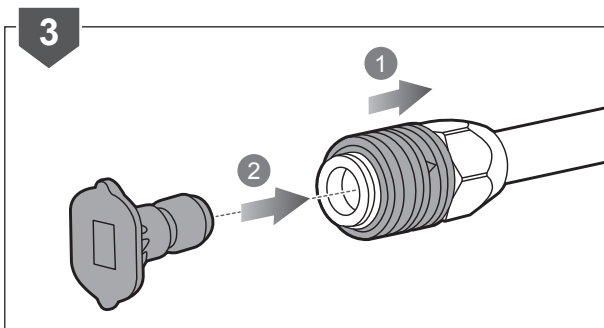
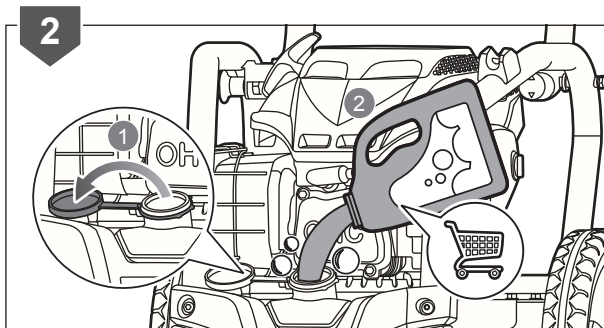
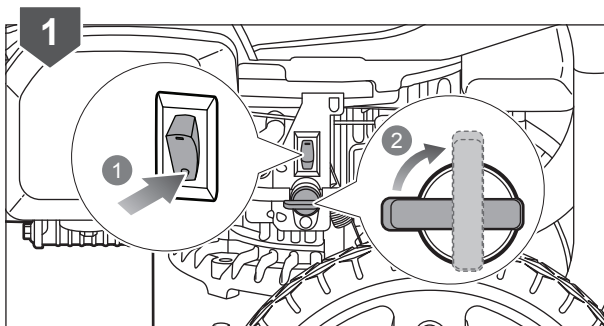


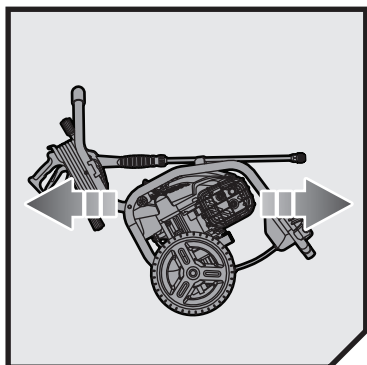
## OPERATION



### WASHING WITH DETERGENT

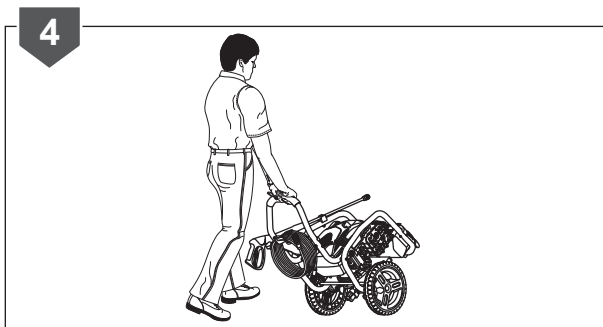
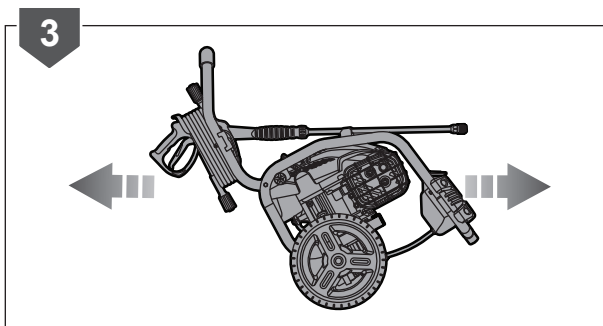
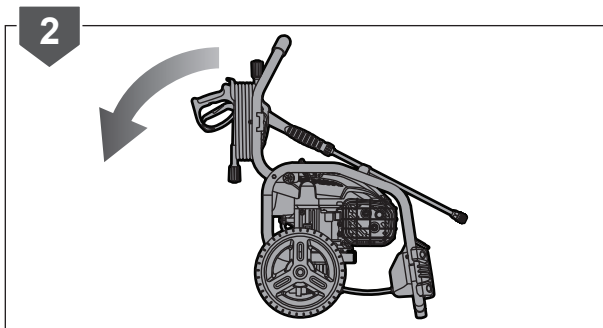
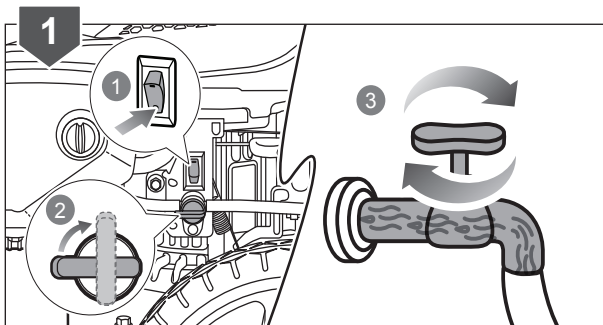
1. Stop the high pressure cleaner. Refer to the "Starting/stopping the engine" section.
2. Remove the cap from the detergent container and pour the detergent into the detergent tank. Replace the detergent cap.
3. Install the soap nozzle. Refer to the "Soap nozzle" section.
4. Start the high pressure cleaner. Refer to the "Starting/stopping the engine" section.

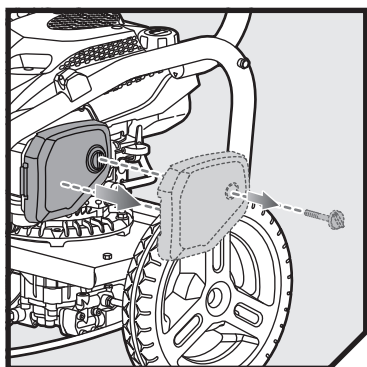




### MOVING THE HIGH PRESSURE CLEANER

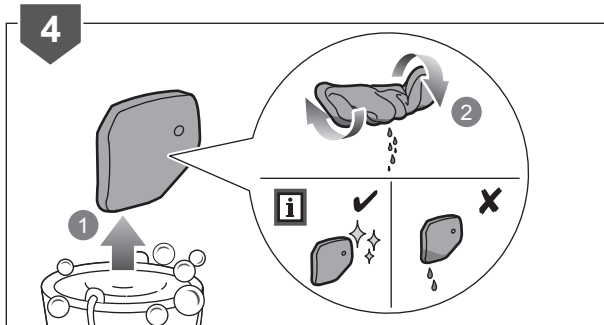
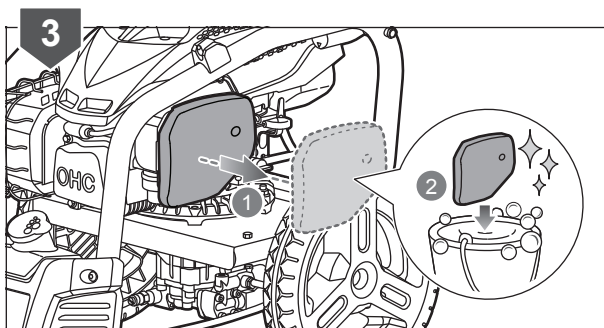
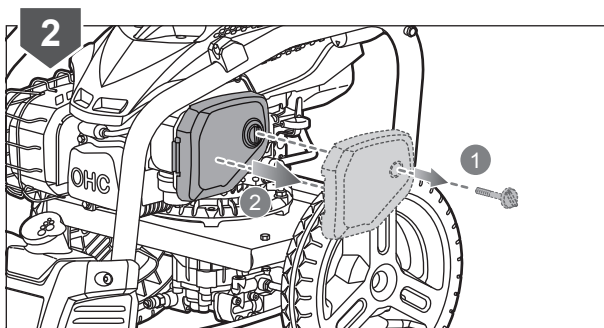
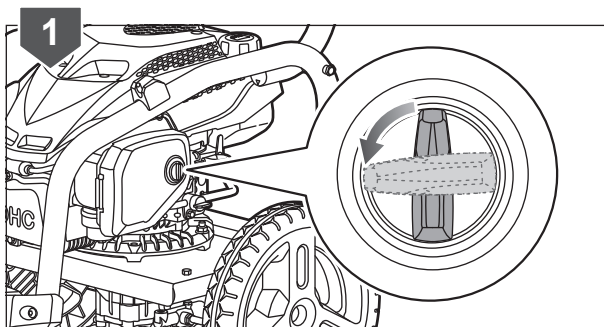
1. Turn off the high pressure cleaner and shut off the water supply.
2. Pull the handle up until the handle release knob snaps into the locking position (if not already up and locked). Ensure the lock is secured in the frame hole before moving.
3. Tilt the product towards you until it balances on the wheels.
4. Roll the product to the desired location.





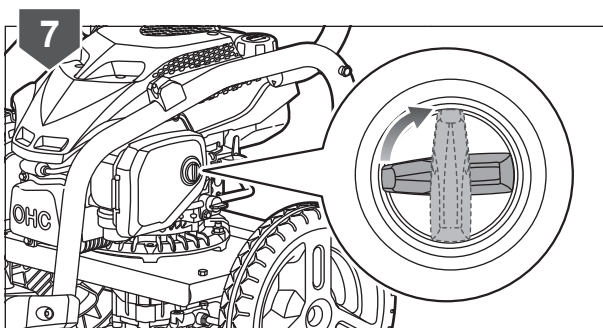
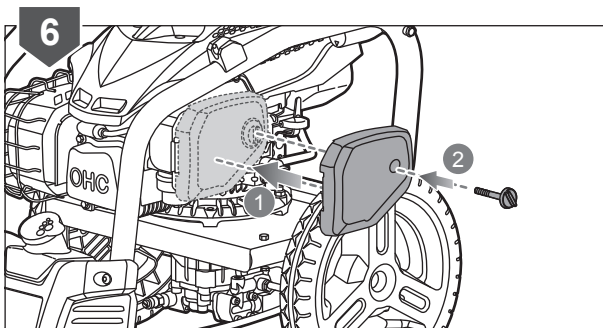
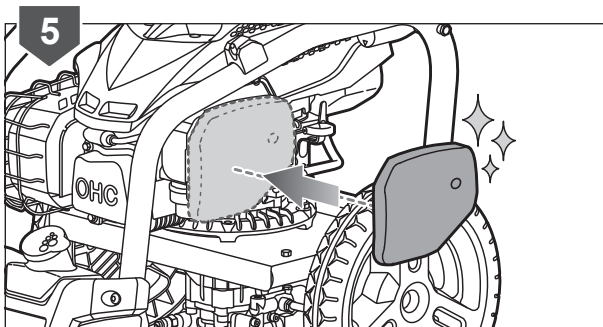
### CLEANING THE AIR FILTER

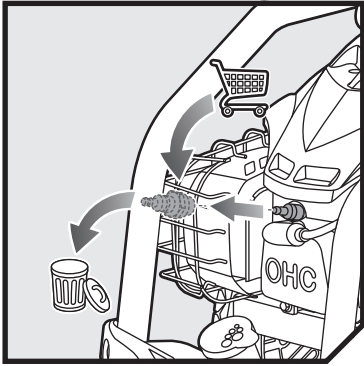
1. Loosen the air filter cover by turning the knob counterclockwise
2. Remove knob and air filter cover.
3. Lift the edge of the air filter carefully and pull it out. Wash the air filter with warm, soapy water.
4. Rinse and squeeze to dry.



## MAINTENANCE

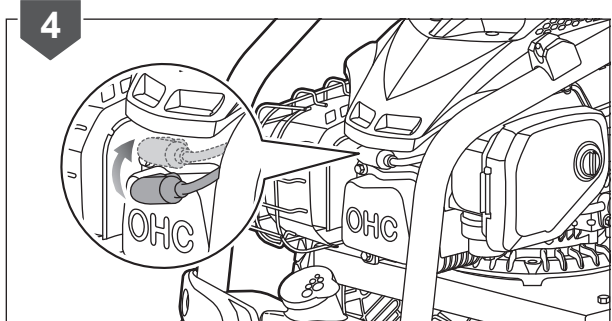
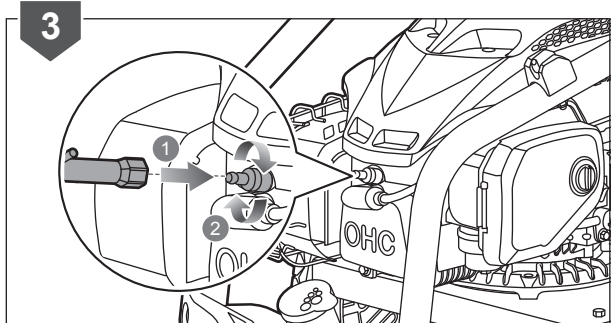
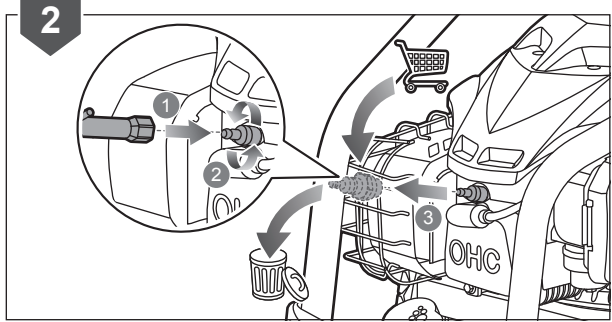
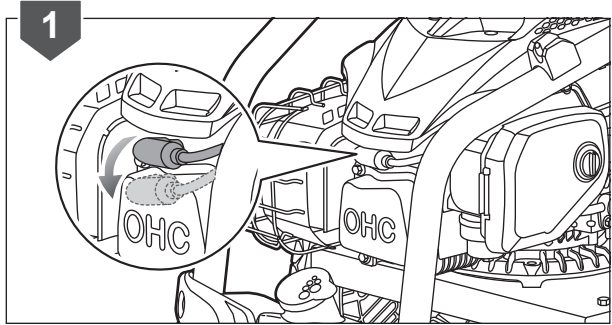
5. Reinstall the air filter.
6. Reinstall the air filter cover and knob.
7. Secure the air filter cover by turning the knob clockwise.

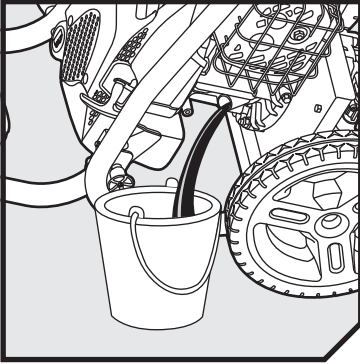




### REPLACING THE SPARK PLUG

1. Disconnect the spark plug boot.
2. Loosen the spark plug by turning it counterclockwise using a wrench. Remove the old spark plug.
3. Install the new spark plug. Use spark plug model BPR7HS (NGK) or equivalent. Tighten the spark plug securely using a wrench. Torque is  $22 \pm 2$  Nm. Do not overtighten.
4. Connect the spark plug boot.

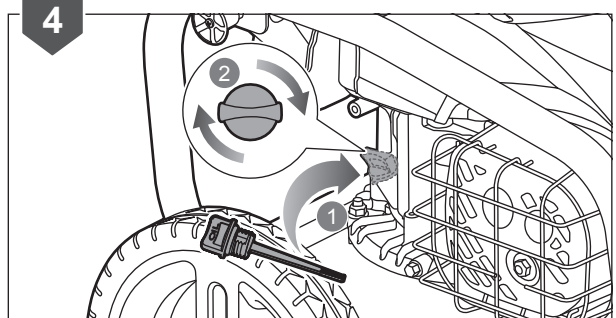
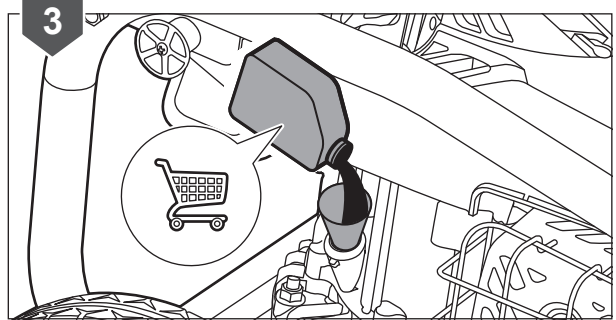
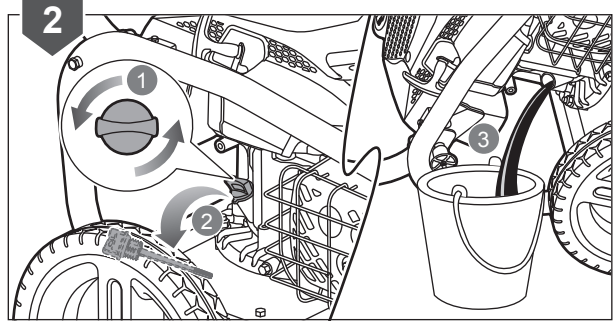
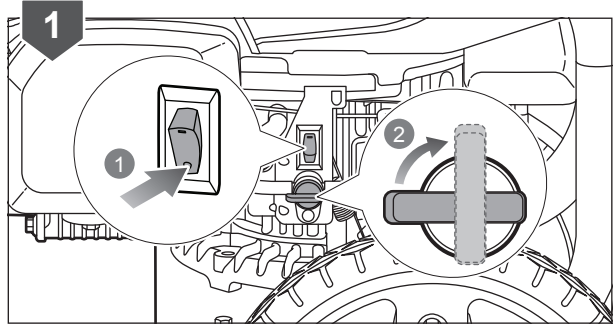




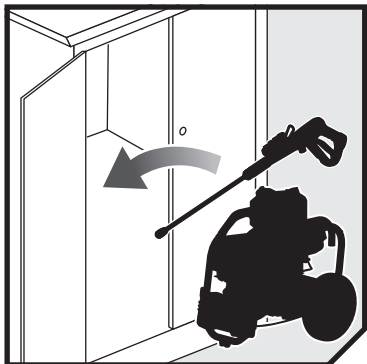
### CHANGING THE ENGINE LUBRICANT

1. Turn the on/off switch to the OFF position. Turn the fuel valve to the OFF (vertical) position.
2. Turn the lubricant cap/dipstick counterclockwise to open. Remove cap/dipstick. Tilt the high pressure cleaner on its side as shown. Drain all lubricant into an approved container. After the crankcase is completely drained, return the high pressure cleaner to an upright position.
3. Fill the engine with lubricant.
4. Replace the cap/dipstick and tighten securely.

**NOTE:** Check the engine oil. When the dipstick oil cap is placed inside the filler, do not re-thread. The oil should be visible between the minimum and maximum marks.

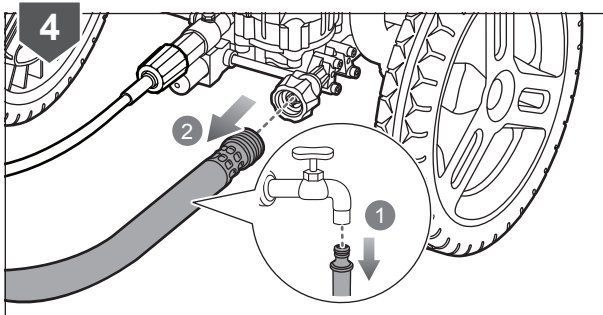
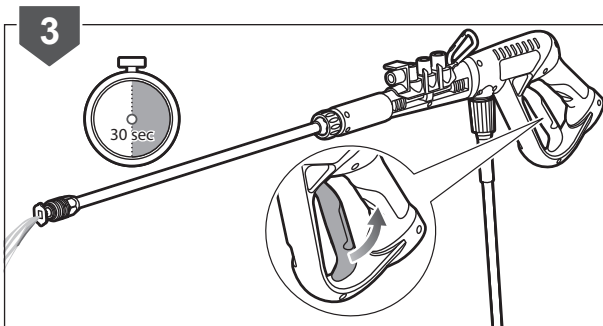
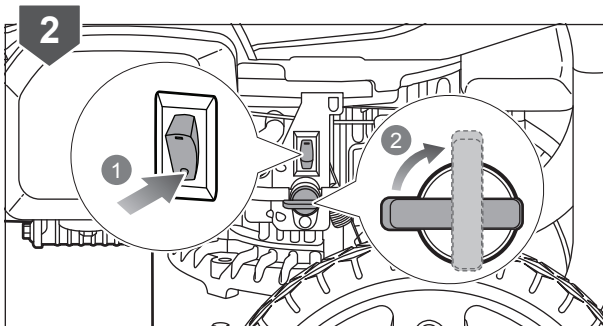
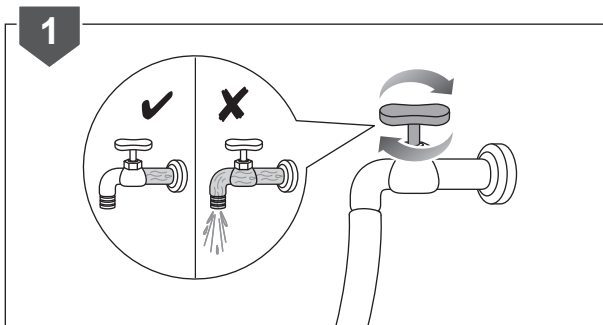


## STORAGE



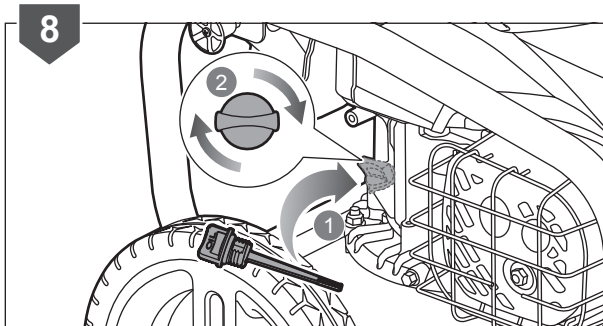
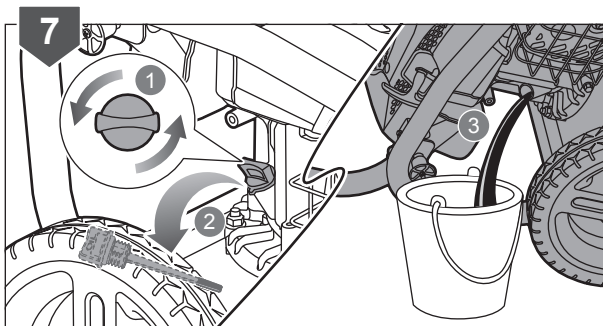
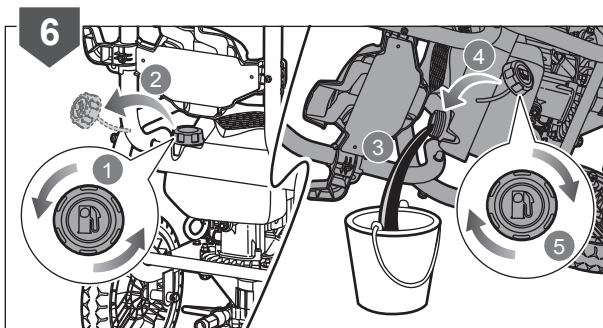
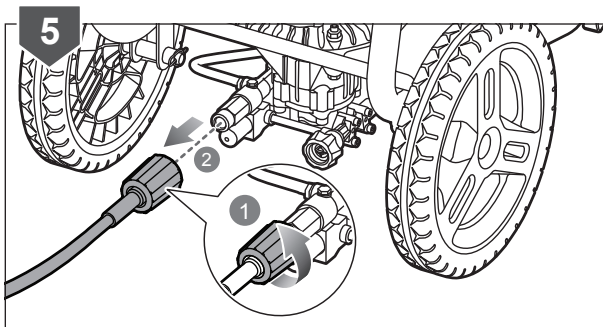
### STORING THE HIGH PRESSURE CLEANER

1. Turn off the water supply.
2. Turn the on/off switch to the OFF position. Turn the fuel valve to the OFF (vertical) position.
3. Squeeze the trigger. Run water through the hose for 30 seconds to clean any debris from the hose.
4. Detach the end of the garden hose adapter from the hose coupler. Detach the threaded hose coupler from the high-pressure cleaner water intake.



## STORAGE

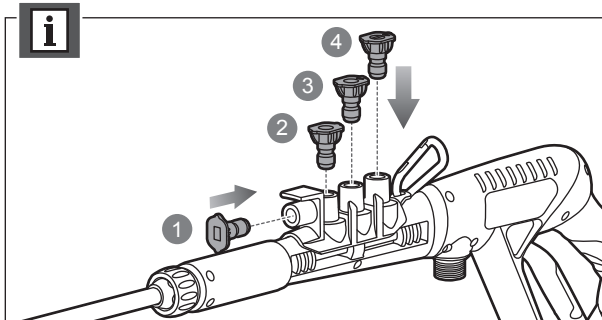
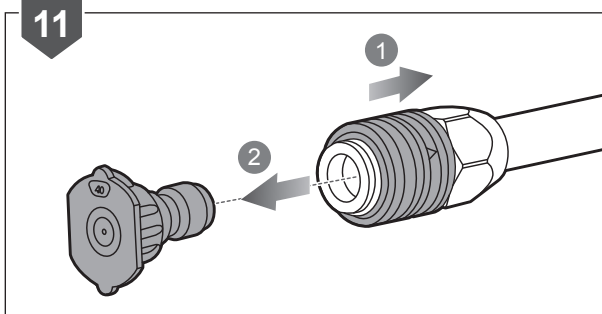
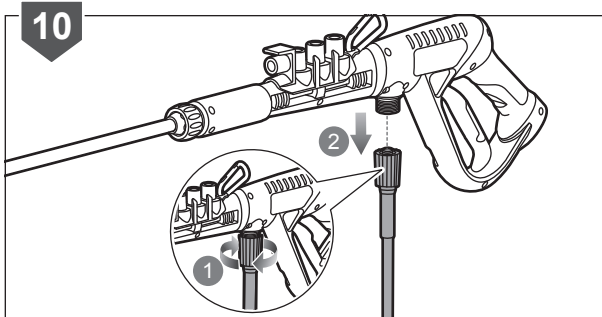
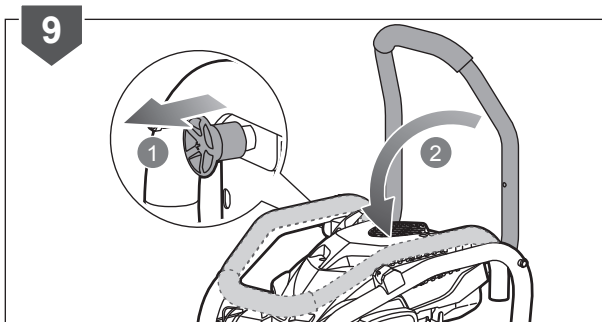
5. Turn the collar counterclockwise to loosen the hose from the pump. Detach the collar of the high-pressure hose from the threaded nipple on the pump.
6. Turn the fuel cap counterclockwise to open. Remove the fuel cap. Drain all the fuel from the tank into a container approved for fuel. Replace the fuel cap and tighten securely.
7. Turn the lubricant cap/dipstick counterclockwise to open. Remove cap/dipstick. Drain all the lubricant from the tank into a container approved for lubricant.
8. Replace the cap/dipstick and tighten securely.





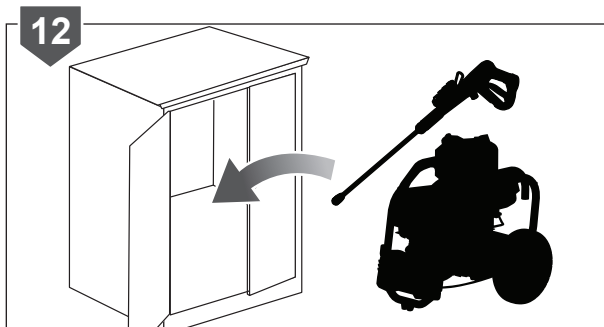
## STORAGE

9. Lower the handle by pulling the handle release knob out and then lower the handle to the down position.
  10. Turn the hose collar counterclockwise to loosen the hose. Detach the high-pressure hose from the trigger handle inlet coupler.
  11. Pull back the quick-connect collar. Remove the nozzle from the spray wand.
- NOTE:** Store the nozzles in the trigger handle.



## STORAGE

12. Store the product in a cool, dry, and well-ventilated place that is inaccessible to children.



## PRODUCT SPECIFICATIONS

Petrol high pressure cleaner

Model RPW3200Y

### Engine specifications

Engine manufacturer YAMAHA

Engine model MA19050150

Engine type 4-stroke, air-cooled, OHC

Bore and stroke 68 mm / 52 mm

Engine displacement 189 cm<sup>3</sup>

Starting system Recoil

Lubricant type 10W-30, class SE or higher

Fuel tank capacity 1.2 L

Engine oil capacity 0.6 L

Weight 29 kg

Detergent ratio 1:20

Maximum pressure 22 MPa

Rated pressure 21 MPa

Maximum flow rate 9.5 L/min

Maximum inlet pressure 0.7 MPa

High-pressure hose length (minimum) 10.6 m (35 ft)

Sound pressure level (in accordance with EN ISO 3744:2010) 94.5 dB(A)

Uncertainty 2.0 dB

Sound power level (in accordance with EN ISO 3744:2010) + Uncertainty 111 dB(A)

Vibration value (in accordance with EN 60335-2-79:2012) 3.97 m/s<sup>2</sup>

Uncertainty, *k* 0.5 m/s<sup>2</sup>

## REPLACEMENT PARTS

**Part** **Model/Part Number**

Spark plug BPR7HS (NGK)  
RAC4006

Water inlet filter 525540001

## VIBRATION LEVEL

### ⚠ WARNING

The declared vibration value has been measured with a standard test method and may be used to compare one tool with another.

The declared vibration value may be used in a preliminary assessment of exposure.

The vibration emission during actual use of power tool can differ from the declared total value depending on the ways in which the tool is used.

Identify safety measures to protect yourself based on an estimation of exposure in the actual conditions of use, taking account of all parts of the operating cycle such as the times when the tool is switched off and when it is running idle in addition to the trigger time.



Imported by:

**Techtronic Industries Australia Pty Ltd**  
31 Gilby Road, Mount Waverley, VIC 3149  
Melbourne, Australia

**Techtronic Industries N.Z. Limited**  
2 Landing Drive, Mangere  
Auckland, 2022, New Zealand