

- FEATURING -
CONNEXT
 GARDEN LIGHTING SYSTEM BY AQUAPRO

- FEATURING -
CONNEXT
 GARDEN LIGHTING SYSTEM BY AQUAPRO

elluminateTM

WHAT IS THE CONNEXT SYSTEM?

CONNEXT GARDEN LIGHTING IS A SYSTEM THAT CONNECTS TOGETHER, SIMPLY AND UNOBTRUSIVELY. FOLLOWING 3 EASY STEPS YOU CAN PLAN YOUR UNIQUE LIGHTING SYSTEM.

A great custom lighting system starts with great planning. Think about what features you'd like to highlight – pathways, greenery, BBQ areas, decking.

Discover the **elluminate Connext 'Plug n Play' Range** for a selection of lighting. Deck lights define entertaining areas, providing both atmosphere and safety. Spotlights in and around greenery and bollard lights along pathways create ambiance and show off your garden. Unleash your creativity by highlighting waterfeatures or statues.

Complete your custom garden lighting design with our easy-to-install plug n play wiring and connectors. You can place the lights anywhere and hide the cables underneath stones, dirt or whatever is in your garden. Don't know what transformer you need? No problem. Our system uses just one. It's so simple. Just plug it in and away you go.

www.elluminatelighting.com.au



- FEATURING -
CONNEXT
 GARDEN LIGHTING SYSTEM BY AQUAPRO



elluminateTM

COMPLETE YOUR GARDEN LIGHTING IN 3 EASY STEPS



'PLUG N PLAY' CONNECTIONS
 - NO FIDDLY WIRING

WATERPROOF CONNECTIONS

SAFE LOW VOLTAGE

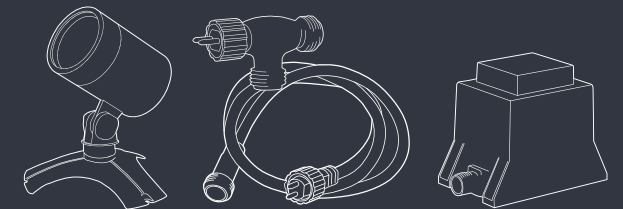
ENDLESS CONFIGURATION OPTIONS

ENERGY EFFICIENT

www.elluminatelighting.com.au

- NO TOOLS REQUIRED
- PLUG N PLAY SYSTEM

COMPLETE YOUR GARDEN LIGHTING IN 3 EASY STEPS



SELECT YOUR LIGHTS

ANY STYLE OR SIZE
 - MAX 12 PER SETUP.



CHOOSE YOUR CONNECTORS & CABLES

VARIOUS LENGTHS
 - MAX OF 50M.



GRAB A TRANSFORMER

PLUG IN AND ENJOY.
 TOO EASY.

Available at
BUNNINGS
 warehouse

www.elluminatelighting.com.au

PLAN YOUR NEXT LIGHTING PROJECT.

elluminate™

CONNEXT
GARDEN LIGHTING SYSTEM BY AQUAPRO

Walk your garden during the day and night to select key focal points and sketch a plan of the area.

Begin by drawing a perimeter, then add buildings, decks, benches, trees, shrubs, vegetation, and decorations of any significance in the garden. Don't forget to indicate where your power point is located.

Think about what type of lights you would like to have in your garden. Choose from small spotlights to light up smaller shrubs or larger spotlights to highlight a beautiful tree. Bollard lights are a great addition to a driveway or path, and deck lights create a fantastic feature along the edges of decking or stairs.

Indicate on your plan where in your garden you will place your lights.

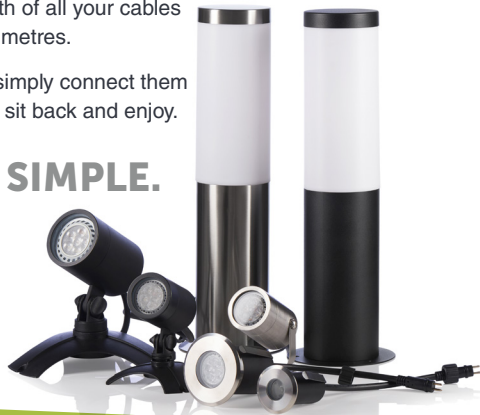
Now you have your lights placed, it's time to work out your cables. Connector cables come in 1m, 2m, 3m, 5m and 10m lengths, giving you endless configuration possibilities. Measure the distance between each light and back to your power source and write these measurements on your plan.

If you have, for example, 7m between lights, you will need one 5m and one 2m cable. You will need a T-Piece Connector for every light except the last light in your sequence. Indicate these on your plan.

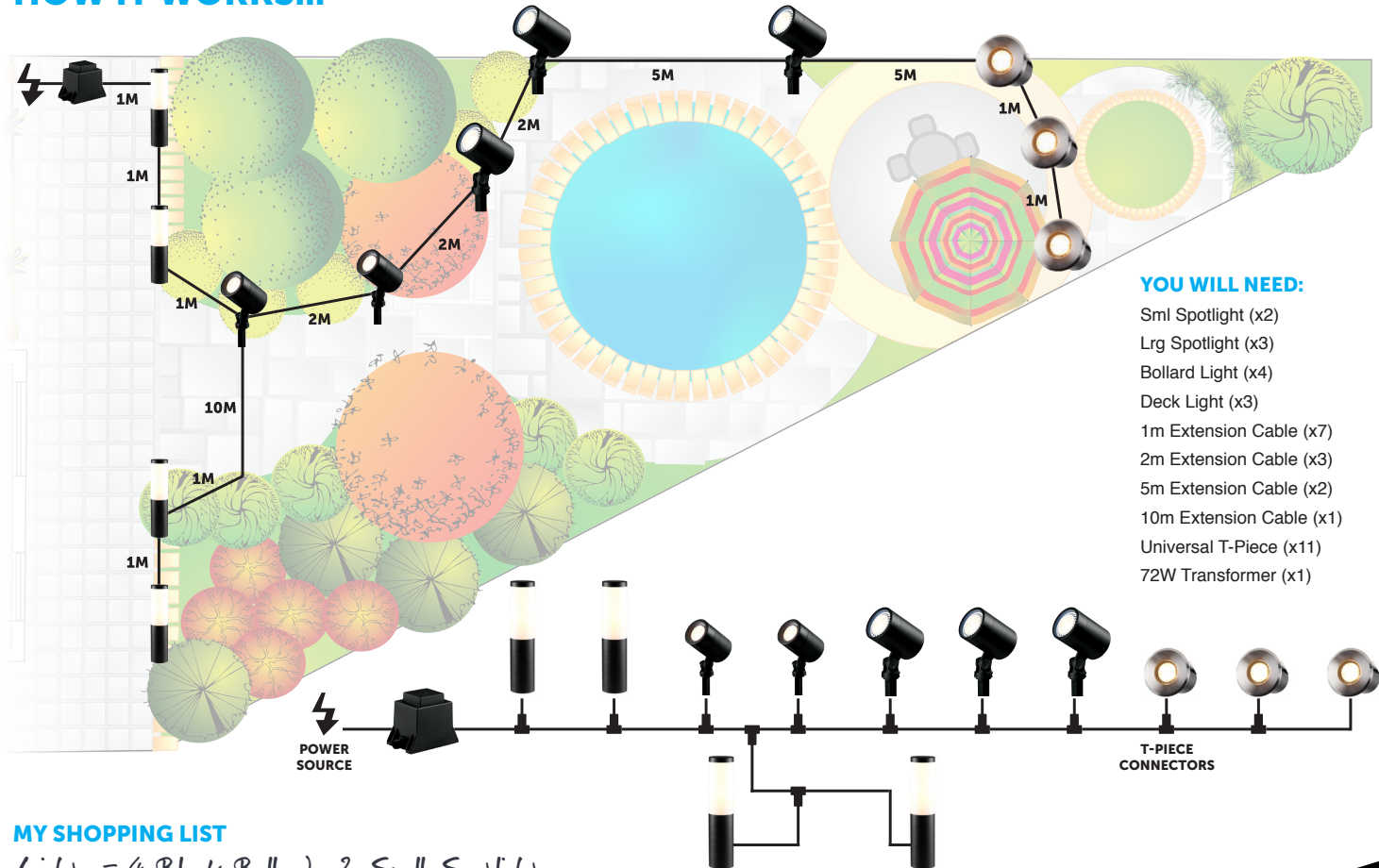
Now measure the distance from your power supply to the first light and mark this on your plan. Check the total length of all your cables does not exceed 50 metres.

Once you're home, simply connect them all up, turn them on, sit back and enjoy.

IT'S THAT SIMPLE.



HOW IT WORKS...



YOU WILL NEED:

- 5m Spotlight (x2)
- Lrg Spotlight (x3)
- Bollard Light (x4)
- Deck Light (x3)
- 1m Extension Cable (x7)
- 2m Extension Cable (x3)
- 5m Extension Cable (x2)
- 10m Extension Cable (x1)
- Universal T-Piece (x11)
- 72W Transformer (x1)

MY SHOPPING LIST

Lights = 4 Black Bollards, 2 Small Spotlights

3 Large Spotlights, 3 Deck Lights

Cables Total length = 33m

T-Piece Connectors x 11

Transformer x 1

elluminate™

OUTDOOR GARDEN LIGHTING

INSTRUCTION MANUAL

COMPLETE YOUR GARDEN LIGHTING IN 3 EASY STEPS



CONNEXT

GARDEN LIGHTING SYSTEM BY AQUAPRO

VERSION
2017 V.1.0



AQUATEC
EQUIPMENT

1300 278 283

www.elluminatelighting.com.au



BEFORE USING THIS PRODUCT, PLEASE READ THESE INSTRUCTIONS OF USE CAREFULLY AND MAKE YOURSELF FULLY FAMILIAR WITH THE SYSTEM. PLEASE KEEP THESE INSTRUCTIONS IN A SAFE PLACE FOR FUTURE REFERENCE.

TECHNICAL SPECIFICATIONS

LIGHTING RANGE

	elluminate SMALL SPOTLIGHT	elluminate LARGE SPOTLIGHT	elluminate S/STEEL BOLLARD	elluminate BLACK BOLLARD	elluminate DECK LIGHT -PACK OF 4	elluminate LARGE DECK LIGHT	elluminate 4 PIECE DECK LIGHT KIT	elluminate 4 PIECE SPOT LIGHT KIT
CODE	20EL062	20EL063	20EL081	20EL082	20EL091	20EL092	20EL200	20EL201
VOLTAGE (V)	12V	12V	12V	12V	12V	12V	12V	12V
POWER (W)	2W	3W	3W	3W	4 x 1W	2W	4 x 1W	4 x 2W
CABLE LENGTH (M)	0.5M	0.5M	0.5M	0.5M	0.2M	0.2M	0.2M	0.5M
GLOBE TYPE	LED MR11	LED MR16	LED MR16	LED MR16	LED Non replaceable	LED MR11	LED Non replaceable	LED MR11
IP RATING	IP44	IP44	IP44	IP44	IP44	IP44	IP44	IP44
LUMENS	750	810	40	40	420	840	420	750

TRANSFORMER

	elluminate 72W TRANSFORMER
CODE	22ET072
INPUT VOLTAGE	240V
OUTPUT VOLTAGE	12V
POWER	72VA
CURRENT	6000MA
IP RATING	IP65

EXTENSION CABLES

	elluminate 1M EXT. CABLE	elluminate 2M EXT. CABLE	elluminate 5M EXT. CABLE	elluminate 10M EXT. CABLE
CODE	21EC001	21EC002	21EC005	21EC010
CABLE LENGTH (M)	1M	2m	5M	10M

T-PIECE CONNECTOR

	elluminate T-PIECE CONNECTOR
CODE	21EC003

COMPLETE YOUR GARDEN LIGHTING IN 3 EASY STEPS



STEP 1

Select your lights any style or size.
(max. 12 per configuration)



STEP 2

Choose your connectors & cables.
Various lengths available (max. 50m)



STEP 3

Grab your outdoor transformer.
Plug in and enjoy.

FEATURES

Your elluminate light has been manufactured with advanced technology and quality materials to integrate into any garden scene, thanks to their compact design.

- The elluminate light has a glass lens and is suitable for outdoor garden use.
- The high-power, energy efficient LEDs emits a natural warm light providing years of maintenance free satisfaction.
- The 240V transformer converts the power supply to a safe 12V for peace of mind in your garden.

THIS SIMPLE AND EASY-TO-CONNECT SYSTEM IS BASED ON A MAXIMUM OF 12 LIGHTS AND NO MORE THAN 50M OF CABLING PER TRANSFORMER.



INSTALLATION

- If required, have a qualified electrician install a weather-proof power point near to the garden, within reach of the transformer.
- Mount the transformer in a protected location making sure that it can't be submerged or overheat.
- For garden installation, slide the garden spike into the circular recess on the underside of the light body. Holding the light body firmly, push the light with attached spike into the desired location taking care not to penetrate any hidden services. Alternatively, you can use the supplied standard base, which attaches in the same way.
- Adjust the light until facing in the general direction of the feature you wish to illuminate.
- Once in the correct position lock the light by tightening the thumb screws, taking care not to over tighten.
- We recommend final adjustments be carried out at night.
- For single light installations plug the end of the extension cable into the transformer and plug the light into the other end of the cable. Tighten all the locking collars firmly. The transformer can now be turned on.
- Multiple lights can be connected together using the 2 Pin extension cables and multiple T-Pieces.
- In the case of the small deck lights, use a 28mm diameter hole saw. For the larger model use a 44mm diameter hole saw.

MAINTENANCE

The LED MR16 globe has been uniquely designed for the elluminate system and cannot be replaced with any other MR16 globe.

- There is minimal maintenance required on the elluminate LED outdoor lights. Inspect regularly to ensure the light or cable is not damaged in any way. Clean the light lens regularly for maximum efficiency.

THE RANGE

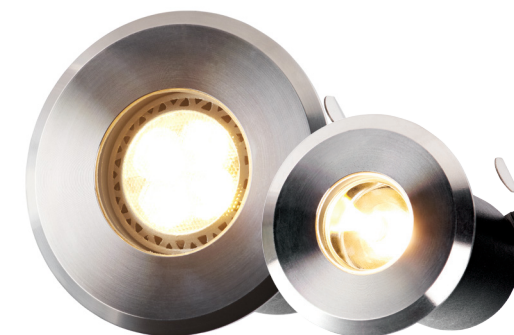


SPOTLIGHT - LARGE / SMALL



BOLLARD - BLACK / STAINLESS STEEL

COMPLETE YOUR GARDEN LIGHTING IN 3 EASY STEPS



DECK LIGHT - LARGE / SMALL



CABLES - 1M / 2M



CABLES - 5M / 10M



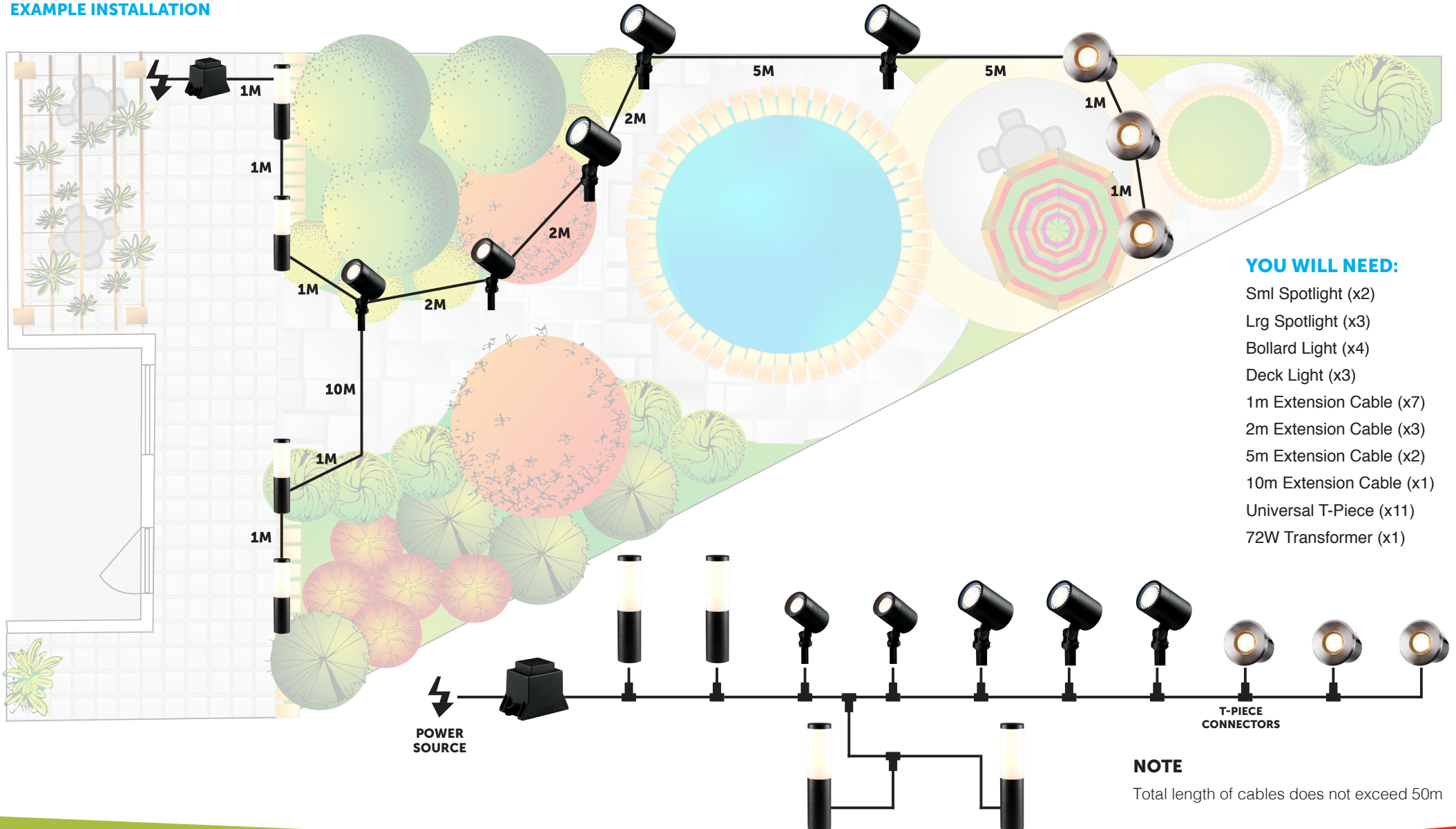
72W TRANSFORMER



T-PIECE CONNECTOR



EXAMPLE INSTALLATION

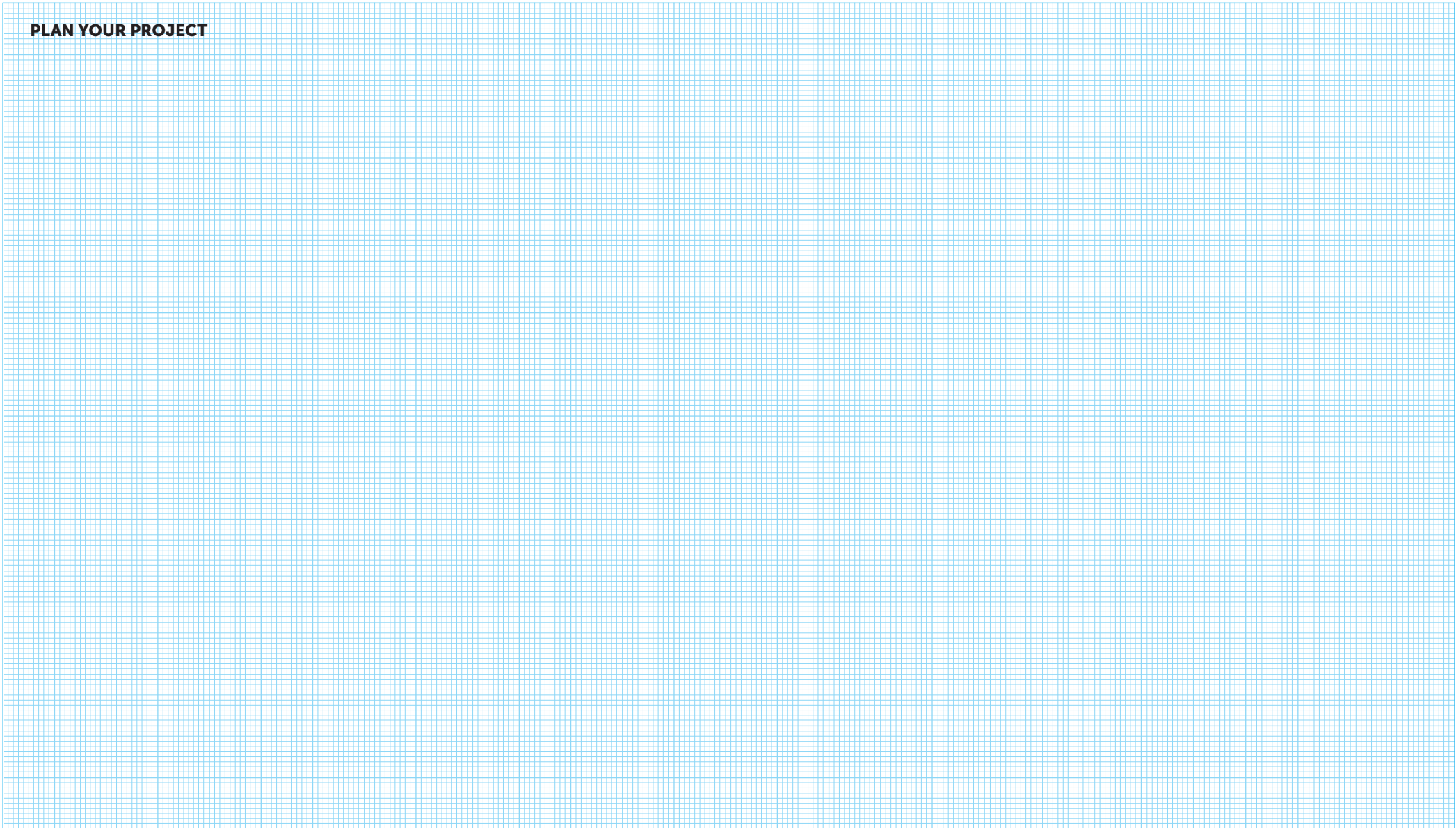




COMPLETE YOUR GARDEN LIGHTING IN 3 EASY STEPS
NO TOOLS REQUIRED | PLUG N PLAY SYSTEM



PLAN YOUR PROJECT





IMPORTANT SAFEGUARDS

To guard against injury, basic safety precautions should be observed. Precautions include, but are not limited to:

- The light should only be used in outdoor situations. Do not use the light in any solvent or flammable liquids.
- Do not operate the light if the light or any of the components of the light (such as the power cable or transformer) have been damaged.
- If the 240V plug supplying the transformer becomes submerged, **do not unplug the cord.** Disconnect the circuit breaker that supplies power to the power outlet. Then unplug and examine the plug and power outlet for presence of water. If the power outlet has become wet, you should consult an electrician before using the system.
- Always use a properly-grounded power supply that is connected to an RCD with a rated residual operating current not exceeding 30mA, as per AS/NZS 3350.2.41:1997.
- Always unplug the light from the power supply when not in use or before performing any maintenance. Never pull the transformer cord to disconnect the plug from the power supply. Grasp the plug and pull to disconnect.
- Do not install or store the light where it will be exposed to extreme hot or cold temperatures.
- Keep out of reach of children or pets. This appliance should not be used by children or infirm persons without supervision.
- Do not cut the cord as this will result in voiding your warranty.
- Care should be taken to arrange the power cord so that it cannot be accidentally tripped over or pulled.
- Do not attempt to repair the light yourself. Return to an authorised service centre or place of purchase if a fault occurs.

Only replace the Globe with elluminate MR16 or MR11 outdoor rated Globes.

LIMITED WARRANTY

This product comes with a warranty against defects (Warranty). The benefits provided in this Warranty are in addition to other rights and remedies available to you under Australian Consumer Law. The Warranty is provided to the original purchaser of the product on the following terms:

- The Warranty is given by Chemkay Pty Ltd trading as Aquatec Equipment: PO Box 2087, Seville Grove, WA 6112; contactable by phone (1300 552 202) or email (info@elluminatelighting.com.au).
- To make a claim under the Warranty you must return the faulty product to the place of purchase with a valid receipt or proof of purchase.
- A Warranty claim must be made within **1 year of the date of purchase.**
- If your claim complies with the above terms and the product is not an exhaustible item and no Voiding Events have occurred, we will (at our sole discretion):
 - repair the product, if possible; or
 - provide a replacement product; or
 - if a replacement product is not available, provide a refund for the purchase price paid.
- You will bear the cost associated with claiming under the Warranty such as the cost of transportation and delivery of the product to and from the place of purchase.
- The Warranty will be void if any of the following events occur, as determined by us, at our sole discretion (Voiding Events):
 - The wrong globe is used. The elluminate system has specially-designed globes to work with low voltage systems. The globe range is 7V to 12V.
 - any tampering/removal of warranty/identification labels or electrical components is evident;
 - the defect has arisen due to: an accident, incorrect or inadequate installation, misuse or abuse of the product (including improper maintenance and service), excessive wear and tear, not following manufacturer's guidelines/instructions, or the product has been used in a manner contrary to the purpose or suitability of the product;
 - the product has been modified without our authority;
 - the defect is caused by power surges/spikes/brownouts.
- Loss of livestock, damage to property or personal injury caused by the improper use or abuse of the product will not be covered and the manufacturer excludes all liability for such events, to the extent permitted by law.

In addition to the Warranty set out above, our goods come with guarantees that cannot be excluded under the Australian Consumer Law. You are entitled to a replacement or refund for a major failure and for compensation for any other reasonably foreseeable loss or damage. You are also entitled to have the goods repaired or replaced if the goods fail to be of acceptable quality and the failure does not amount to a major failure.

elluminate™



AQUATEC
EQUIPMENT

www.elluminatelighting.com.au

elluminate is a registered trademark of Aquatec Equipment
37 Edison Circuit, Forrestdale WA 6112

AUSTRALIAN OWNED COMPANY

Made in China exclusively for **elluminate**