



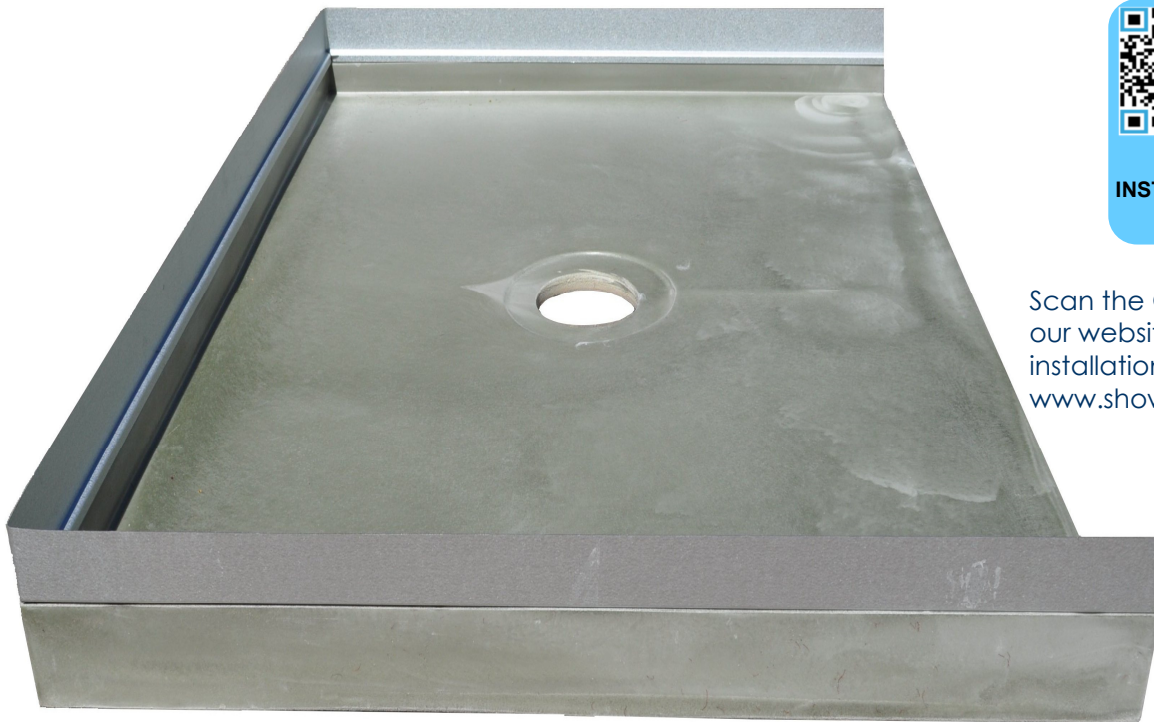
The complete shower company



# Showerline Tile-Over Tray

## 100% Leak Proof - Your Insurance

- ☑ Absolute 100% leak proof (unique 'lip/ flashing' design)
- ☑ Supplied with pre-folded flashing and puddle flange
- ☑ Extremely strong - Lightweight
- ☑ Maintenance free
- ☑ Easy to install - non check-in
- ☑ Simplified plumbing connection
- ☑ Supplied one side level entry (easily trimmed for multiple level entry)
- ☑ AS3740-2010 compliant
- ☑ Suitable for masonry, timber, cfc or steel frame
- ☑ Designed & manufactured in Australia by an Australian owned company
- ☑ 7 year manufacturing warranty



Scan the QR code or visit our website to view video installation guide  
[www.showerline.com.au](http://www.showerline.com.au)

Sizes/Item Numbers	Centre Outlet	Rear Outlet
900 X 900	I/N 4890666	I/N 4890668
1000 X 1000	I/N 4890669	I/N 4890670
1200 X 900	I/N 4890671	I/N 4890672

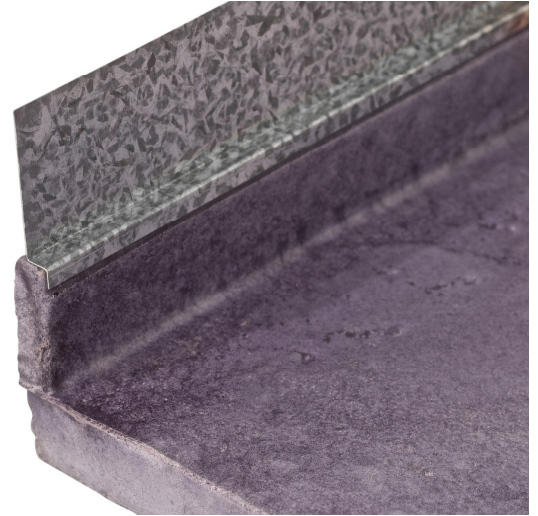


# Manufactured with 1 side level entry

## Easily trimmed for multiple level sides

### Supplied with

- Pre-folded flashing to suit 6mm wall board
- Adjustable height waste 80 x 50mm outlet kit (includes grate)



### Compatible installation products

#### For adhering tray to substrate

- Sikaflex – 11FC
- Dunlop Builders Bond
- Selleys 3 in 1 Silicon Sealant

#### For sealing flashing

- Selleys 3 in 1 Silicon Sealant

#### For expansion joints

- Polyblend S1 Sealant

#### For sealing over expansion joints

- Gripset/Betta peel & seal

#### For adhering tiles to tray

##### Step 1– Primer

- Aqua Blok Moisture Seal Primer

##### Step 2– Optional waterproofing Membrane

- Aqua Blok Rapid Waterproofing Membrane

##### Step 3– Adhesive

- Prohesive Ultrapro
- MCB A100 Tiling Adhesive
- Dunlop Tile-All



Scan the QR code or visit our website to view video installation guide  
[www.showerline.com.au](http://www.showerline.com.au)

