

MODULAR

Shower Grate & Channel



Sleek modern design with an
easy **Do-It-Yourself** system



Inside each modular kit, you'll find

Brick Pattern

GREY - G2GAM1250-SBP-G
BLACK - G2GAM1250-SBP-B



Available in Grey & Black

Composition:

Grate - 316 Grade Stainless Steel
Channel, Drain & Outlet - UPVC

Outlet Sizes:

43mm, 70mm and 83mm
(comes with holesaws to suit)

Channel Dimensions:

1250mm long x 100mm wide x 25mm high

KIT CONTENTS:

- Brick Pattern Grate
- UPVC Channel
- UPVC End Caps
- UPVC Outlets (43mm, 70mm, & 83mm)
- 3 x Holesaws
- Silicon



Flow Pattern

GREY - G2GAM1250-SFP-G
BLACK - G2GAM1250-SFP-B



Available in Grey & Black

Composition:

Grate - 316 Grade Stainless Steel
Channel, Drain & Outlet - UPVC

Outlet Sizes:

43mm, 70mm and 83mm
(comes with holesaws to suit)

Channel Dimensions:

1250mm long x 100mm wide x 25mm high

KIT CONTENTS:

- Flow Pattern Grate
- UPVC Channel
- UPVC End Caps
- UPVC Outlets (43mm, 70mm, & 83mm)
- 3 x Holesaws
- Silicon



Tile Insert

GREY - G2GAM1250-TI-G
BLACK - G2GAM1250-TI-B



Available in Grey & Black

Composition:

Insert Channel, Base Channel,
Drain & Outlet - UPVC

Outlet Sizes:

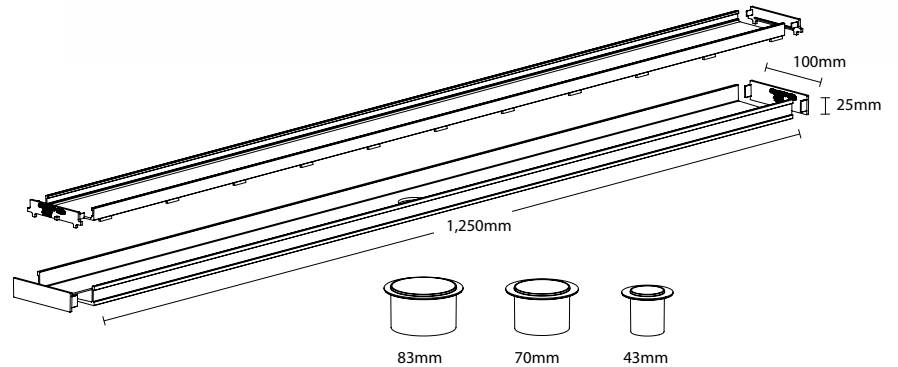
43mm, 70mm and 83mm
(comes with holesaws to suit)

Channel Dimensions:

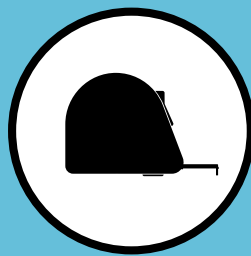
1250mm long x 100mm wide x 25mm high

KIT CONTENTS:

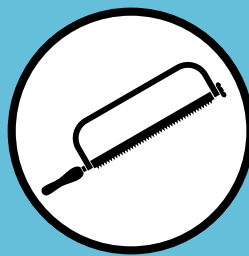
- UPVC Tile Insert Channel
- UPVC Base Channel
- UPVC Insert Channel End Caps
- UPVC Base Channel End Caps
- UPVC Outlets (43mm, 70mm, & 83mm)
- 3 x Holesaws
- Silicon



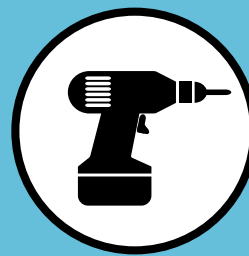
For installation you will also need:



TAPE MEASURE



HACKSAW



DRILL

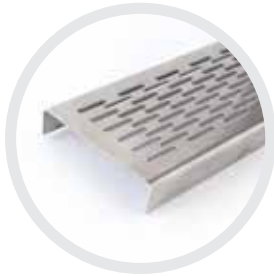
A professional look in 4 easy steps!

1. Cut 2. Glue 3. Fit 4. Install

THIS PRODUCT MUST BE INSTALLED BY A LICENCED PLUMBER

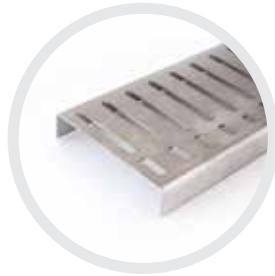
Special Order Parts

For longer and larger applications we have the following modular sections available. Using our modular joining sections you can install long runs of base channel in no time at all.



BRICK PATTERN GRATE

G2GASBPG1500 1,500mm length
G2GASBPG1250 1,250mm length
G2GASBPG1000 1,000mm length



FLOW PATTERN GRATE

G2GASFPG1500 1,500mm length
G2GASFPG1250 1,250mm length
G2GASFPG1000 1,000mm length



WEDGE WIRE PATTERN GRATE

G2GASWWG1500 1,500mm length
G2GASWWG1250 1,250mm length
G2GASWWG1000 1,000mm length



TILE INSERT CHANNEL

G2GAIC1500B 1,500mm length (Black)
G2GAIC1500G 1,500mm length (Grey)
G2GAIC1250B 1,250mm length (Black)
G2GAIC1250G 1,250mm length (Grey)
G2GAIC1000B 1,000mm length (Black)
G2GAIC1000G 1,000mm length (Grey)



BASE CHANNEL

G2GABC3000B 3,000mm length (Black)
G2GABC3000G 3,000mm length (Grey)
G2GABC2000B 2,000mm length (Black)
G2GABC2000G 2,000mm length (Grey)
G2GABC1500B 1,500mm length (Black)
G2GABC1500G 1,500mm length (Grey)
G2GABC1250B 1,250mm length (Black)
G2GABC1250G 1,250mm length (Grey)
G2GABC1000B 1,000mm length (Black)
G2GABC1000G 1,000mm length (Grey)



JOINING SECTION

G2GAJSB Black
G2GAJSG Grey

Please Note - silicon & hole saws are not supplied with special order parts.

Special Order Parts

For longer and larger applications we have the following modular sections available. Using our modular joining sections you can install long runs of base channel in no time at all.



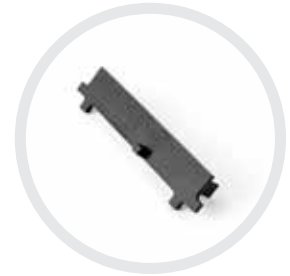
90° CORNER

G2GA90CB Black
G2GA90CG Grey



BASE CHANNEL END CAP

G2GABCECB Black
G2GABCECG Grey



INSERT CHANNEL END CAP

G2GATIECB Black
G2GATIECG Grey



43MM SPIGOT

G2GA43SB Black
G2GA43SG Grey



70MM SPIGOT

G2GA70SB Black
G2GA70SG Grey



83MM SPIGOT

G2GA83SB Black
G2GA83SG Grey

Please Note - silicon & hole saws are not supplied with special order parts.



Grates 2 Go
Unit B, 60 Bells Line of Road
NORTH RICHMOND NSW 2754
Phone: (02) 4571 1530 Fax: (02) 4571 1534
Email: admin@grates2go.com.au