



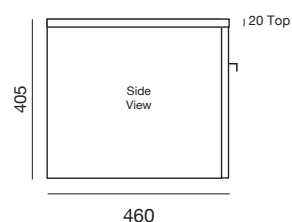
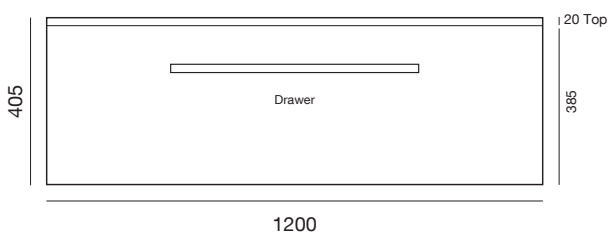
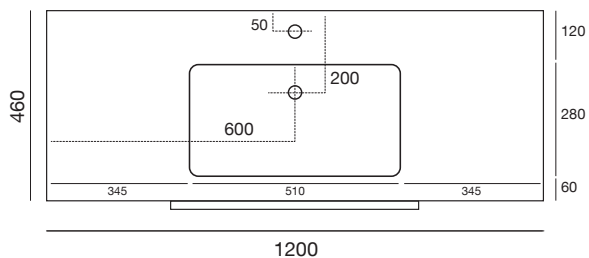
Oslo Vanity 1200

Wall Hung



Clean, uncluttered lines and fresh, neutral tones are the hallmarks of Scandinavian style and the reason this enduring style is so well-matched to the Australian lifestyle. A great example of 'Scandi' style is the Oslo Wall Hung Vanity in a choice of classic gloss white polyurethane or light timber 'Coast' veneer with a sleek matte black finger-pull bar handle. The Oslo is finished with a 20mm ceramic top and integrated basin, making it a durable, low-maintenance choice for the bathroom as well as a stylish centrepiece.

SET-OUT FOR LICENSED PLUMBER:



CABINET FINISH

VERSION 1:

Exterior: White gloss polyurethane
Interior: White moisture resistant melamine

VERSION 2:

Exterior: Coast veneer
Interior: Coast Veneer (moisture resistant)

TOP/BASIN

20mm ceramic top with integrated basin
Tap hole options: 1 only
Includes 32mm overflow plug and waste
Tapware sold separately

MECHANISMS

Black powder coated right-angle, finger grip handle
Soft-close drawer runner

DIMENSIONS:

W 1200 x D 460 x H 405mm

PACKED DIMENSIONS

W 1300 x D 600 x H 600mm

Weight: 1200mm 55kg

WARRANTY

Three (3) years (see warranty information over page).

INSTALLATION TIPS

- * Must be installed by a Licensed Plumber
- * 120mm allowance behind drawer for hot/cold pipework
- * Screw fix through the rear of the cabinet, washers must be used to avoid the screw pulling through the carcass
- * Ensure top and sides of unit are silicon sealed
- * Detailed installation instructions over page



Veneer: Coast

CIBO DESIGN – WHO ARE WE?

Established in 1994 on Sydney's northern beaches, CIBO Design has built a solid reputation for its collection of high quality Australian-designed bathroomware. Specialising in producing innovative bathroom storage solutions, CIBO's products combine contemporary design and quality craftsmanship with practicality.

Oslo Vanity

Delivery/Pick-up & Installation

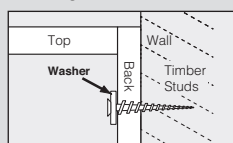
If an item is damaged or imperfect when opened, do not proceed with installation. If a defective item is installed, CIBO is not liable for removal of the item, nor will CIBO accept responsibility to repair or replace the product. CIBO bathroomware should only be installed by a licensed plumber.

Returns & Exchanges

Please retain your receipt and contact the 'Returns and Exchanges' Desk at the Bunnings store where you purchased the item.

IMPORTANT NOTES:

1. Use washers with Wall Hung Vanities:



When fixing vanity unit to wall, use washers around the top fixing positions. This will decrease pressure applied to the screw head.

In situations where a wall is out of square, the installer may be required to use packers behind the vanity to ensure the unit does not become twisted during installation.

IT IS THE RESPONSIBILITY OF THE INSTALLER TO ADJUST THE DOOR(S) AND/OR DRAWER(S) AFTER INSTALLATION.

2. Under no circumstances should vanities and/or tops be tiled into the wall. CIBO vanities and basin/tops must be fitted to finished/completed wall coverings e.g., tile, masonry or other cladding method deemed acceptable, as per the building code (of Australia) 2013. The CIBO Warranty does not cover any vanity and/or top and/or basin that has been tiled 'into' a wall i.e., fitting or fixing a vanity to a wall and tiling around it, and/or tiling down and/or around the vanity and top/basin.

Vanity Unit Installation

- Carefully remove drawer(s) (see **Drawer Removal** instructions) and cover runners before installation, to avoid damage. If top has not been fixed to vanity, remove it from vanity.
- Using a hole saw, drill holes for water supply pipes, wastes etc.
- Carefully move cabinet into place. Pack vanity to required height ensuring vanity top is level from side to side and front to back. Packers may be required behind the unit to ensure top is level and to prevent unit from twisting.
- Once vanity is level, fasten it to the wall using washers around the appropriate fixings i.e. screws, bolts (not supplied). It is the installers responsibility to determine what fixing materials are needed. Fixings should be made as high as possible on unit.

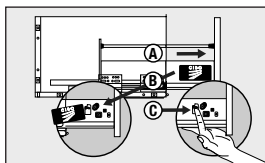
(see 'IMPORTANT NOTES' re Wall Hung Vanities)

- Sweep debris from interior of unit.
- Now replace top ensuring front and ends of top line up with front and ends of unit. This may leave gaps between top and wall. Fix top to vanity with silicone. Seal around the cabinet with silicone.
- The unit must be sealed (along the back edge of top and down the sides) against the wall with bathroom quality silicone. The best method of applying silicone is to cut the appropriate sized tip at a 65° angle and to evenly run a bead around the unit ensuring all gaps are filled.
- Spray soapy water on the silicone joint (between the wall and top) to stop silicone sticking to wall, then wipe off excess silicone and soapy water.
- Pipes can now be connected.

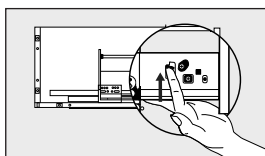
DAMAGE MAY OCCUR IF THE PRODUCTS ARE CONSTANTLY EXPOSED TO WATER. SILICONE MUST BE USED TO SEAL ALL JOINS – TOPS, CABINET SIDES AND KICKBOARDS MUST BE SEALED TO PREVENT WATER PENETRATION.

Drawer Removal

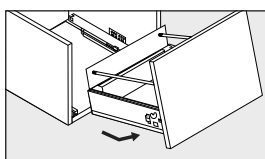
(before vanity installation)



- A** Pull out the drawer. **B** Take the CIBO caps off both sides. **C** Locate release levers on both sides.

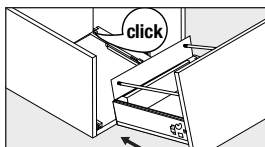


- With tip of your finger lift the release levers on both sides at the same time.

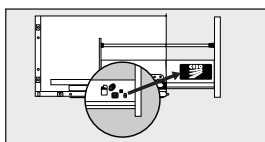


- Lift and slide out the whole drawer.

Drawer Replacement



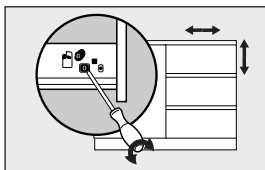
- Insert the drawer back on the runner – when you hear a "click" it has been connected.



- Replace the CIBO caps.

Drawer Front Alignment

(after vanity installation)



Adjustment point for drawer front alignment if required.

Product Care & Maintenance

We advise that it is the responsibility of the purchaser to ensure the product is installed and maintained appropriately. All materials used are of high quality and care must be taken when cleaning.

Glass

Best practice is to clean glass with a small amount of warm water and a 'Micro' cloth. When finished, wipe dry with 'Micro' cloth. Never use caustic chemicals, razor blades, putty knives or abrasive pads as they may damage the surface.

Cabinets

The most effective cleaning method is to use a damp cotton cloth and a mild detergent. Never use an ammonia-based product or any kind of abrasive cleaning product.

Warranty

This product is covered by a three (3) year replacement product warranty. Products which are within 3 years from the date of purchase, found upon inspection by an authorised representative to be defective will be repaired or exchanged with an equivalent product free of charge. Replaced items become CIBO Design's property. All replacement products will be available for collection without charge to the customer at the nearest Bunnings store to the customer's location, or elsewhere as agreed with the customer.

Warranty for Labour and Spare Parts – One (1) Year

The labour for the replacement of products and spare parts to which this warranty applies will be supplied by CIBO Design if the warranty claim is made within one (1) year from the date of purchase.

Spare parts which are within one (1) year from the date of purchase and found upon inspection by an authorised CIBO Design representative to be defective in construction, material or assembly, will be replaced free of charge. Products found to be faulty more than one (1) year from the date of purchase will be replaced free of charge by CIBO Design. After one (1) year from date of purchase, labour and spare parts costs are the responsibility of the customer.

Warranty Conditions

This warranty will apply only under all of the following conditions:

- The item has been installed by a licensed plumber;
- This item has been installed for and subjected to domestic residential use only;
- Failure is due to the manufacture of the product;
- Proof of purchase (including date

of purchase) is provided;

- The installation of the product is in accordance with the instructions provided. This warranty does not include faults caused by:
 - Unsuitable or improper use;
 - Incorrect installation or installation not in accordance with the instructions provided;
 - Installation or part installation by the purchaser or any person other than a Licensed Plumber;
 - Normal wear and tear including water* and natural causes such as sunlight, humidity and other environmental conditions or factors;
 - Inadequate or complete lack of maintenance;
 - Chemical, electrochemical or electrical influences;
 - Harsh detergents or abrasive cleaners used on product finishes

*Important note: CIBO Design vanity cabinets are manufactured from Moisture Resistant (MR) materials but are not waterproof. Care must be

taken to dry spillages or leakage of water that may gain access to cabinetry. Accurate sealing of the vanity cabinet and kickboard (where applicable) is vital for proper maintenance of the product and ensuring longevity.

Exclusions - To the fullest extent permitted by law, CIBO Design excludes all liability for damage or injury to any person, damage to any property, and any indirect consequential or other loss or damage.

Warranty Claim Procedure - Please retain your receipt and contact the 'Returns and Exchanges' Desk at the Bunnings store where you purchased the product. Warranty claims can also be sent to: CIBO Design, After Sales Service PO Box 7461, Warringah Mall, Brookvale NSW 2100. Our goods come with guarantees that cannot be excluded under the Australian Consumer Law. You are entitled to a replacement or refund for a major failure and compensation

for any other reasonably foreseeable loss or damage. You are also entitled to have the goods repaired or replaced if the goods fail to be of acceptable quality and the failure does not amount to a major failure. The benefits to the customer given by this CIBO Design warranty are in addition to any other rights and remedies available to the customer as a consumer under any laws that relate to the goods covered by this CIBO Design warranty. CIBO Design Pty Ltd
1/130 Old Pittwater Road
Brookvale NSW Australia
Postal: PO Box 7461, Warringah Mall, Brookvale NSW 2100
Tel: (02) 9939 4434
Email: aftersales@cibodesign.com.au