

ozito

UNI-JAWS

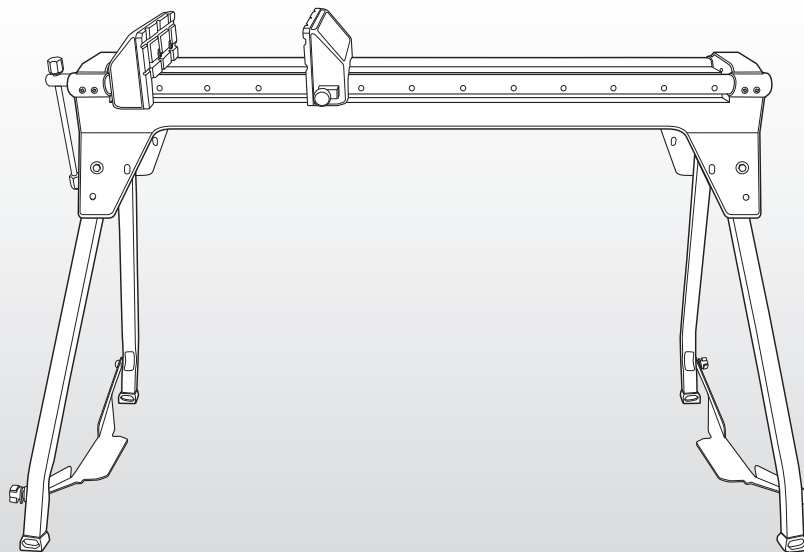
860mm

INSTRUCTION MANUAL

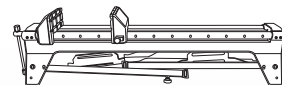
SPECIFICATIONS

Jaw Size:	180mm x 75mm
Clamping Capacity:	860mm
Clamping Force:	1000kg
Rail Diameter:	32mm
Rail Detents:	12 x 75mm

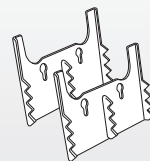
ozito.com.au



WHAT'S IN THE BOX



1 x Uni-Jaws
2 x Urethane jaws (fitted)



2 x Log Jaws



1 x 6mm Hex Key

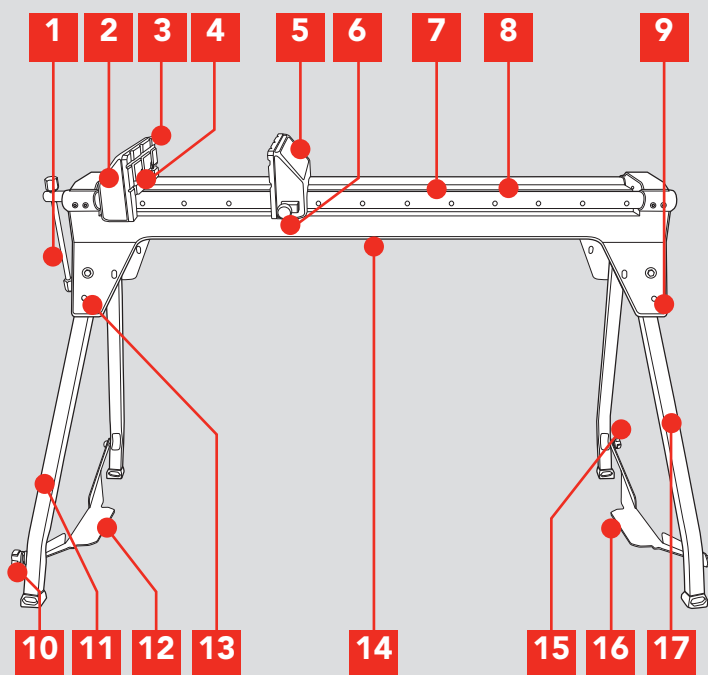
3 YEAR REPLACEMENT WARRANTY

UJC-860

KNOW YOUR PRODUCT

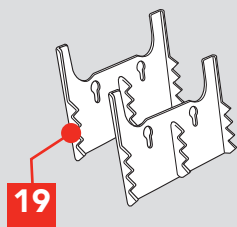
UNI-JAWS

- | | |
|-------------------------------------|--------------------------------------|
| 1. Front vice jaw clamping handle | 10. Front support brace locking knob |
| 2. Front vice jaw | 11. Front legs (x 2) |
| 3. Urethane jaw facings (x 2) | 12. Front leg support brace |
| 4. Hex screws (x 4) | 13. Front leg locking pin (x 2) |
| 5. Rear vice jaw | 14. Uni-Jaws bed |
| 6. Rear vice jaw locking pins (x 2) | 15. Rear support brace locking knob |
| 7. Vice rails | 16. Rear leg support brace |
| 8. Vice rail detents (x 12) | 17. Rear legs (x 2) |
| 9. Rear leg locking pin (x 2) | |



ACCESSORIES

- 18.6mm Hex Key
- 19. Log jaws (x 2)



ONLINE MANUAL

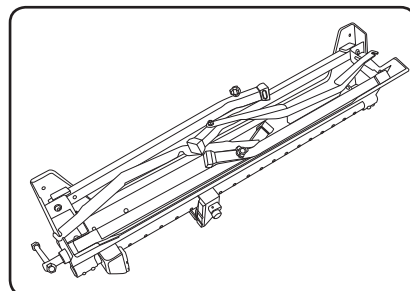
Scan this QR Code with your mobile device to take you to the online manual.



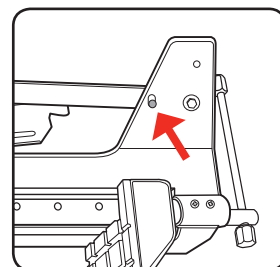
SETUP & PREPARATION

1. SETTING UP

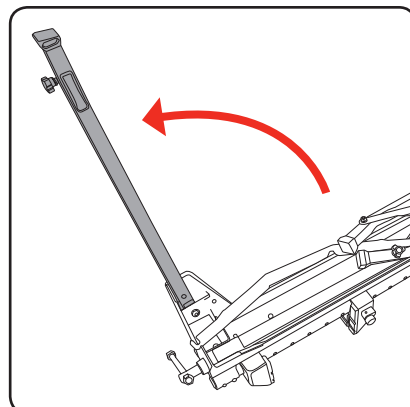
1. The Uni-Jaws comes fully assembled. To operate the Uni-Jaws follow the simple set-up instructions.
2. Remove the Uni-Jaws from the carton and carefully place it upside down on a flat surface.



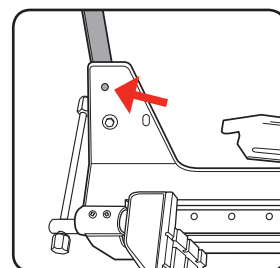
3. Start by unfolding the front legs. Press the front leg locking pin.



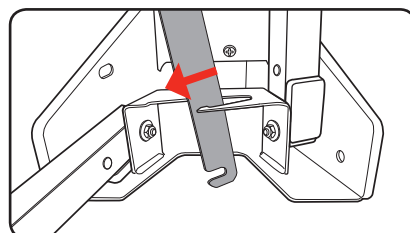
4. Unfold the front leg to the fully upright position



5. Ensure that the locking pin clicks into the opposite pin hole.



6. To raise the opposite front leg, first remove the front leg support brace from the holding bracket.



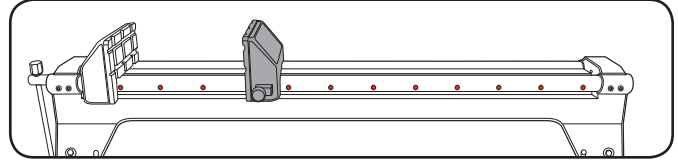
3

YEAR REPLACEMENT WARRANTY

OPERATION

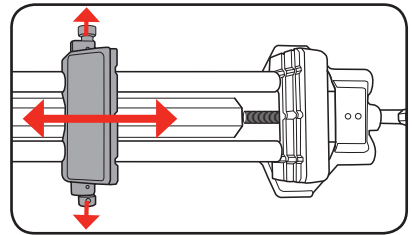
2. ADJUSTMENTS

Adjusting the rear vice jaw



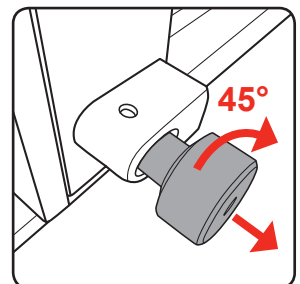
1. The rear vice jaw is adjustable to 12 detent positions located at 75mm intervals.

2. To adjust the rear vice jaw pull back on the 2 rear vice jaw locking pins and move the rear vice jaw backwards and forwards along the vice rails to the desired detent position.



3. Letting go of the rear vice jaw locking pins will allow the rear vice jaw to stop at the next available vice rail detent.

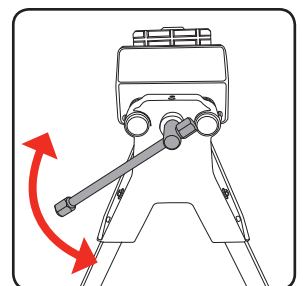
4. By pulling back on the 2 rear vice jaw locking pins and rotating 45° the rear vice jaw can be freely moved backwards and forwards along the vice rails without locking into position.



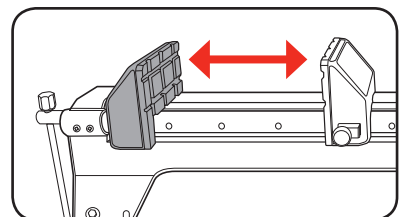
5. When the rear jaw needs to be locked into position simply rotate the rear vice jaw locking pins 45° one more time, they will now click into the next available detent when moved backwards or forwards on the vice rails.

Adjusting the front vice jaw

1. Rotating the front vice jaw clamping handle will move the front vice jaw backwards and forwards.

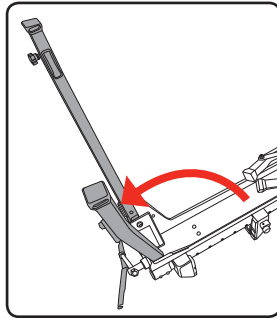
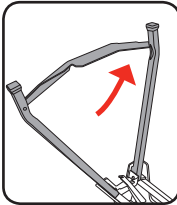


2. Rotating in a clockwise direction moves the front vice jaw forward towards the rear jaw, rotating in an anti-clockwise direction moves the front vice jaw backwards towards the front of the Uni-Jaws.

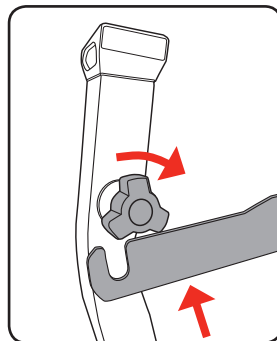


7. Fully raise the opposite front leg ensuring the locking pin clicks into the opposite pin hole.

8. Swing the support brace to the opposite front leg and place it into position between the front support brace locking knob and front leg.

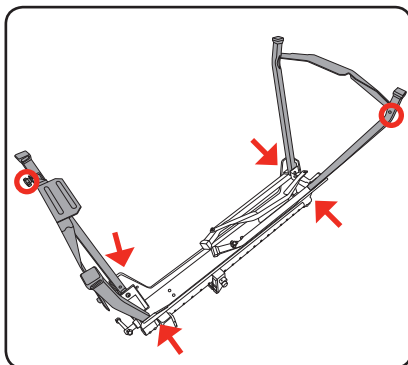


9. Ensure the brace is positioned between the washer and front leg.

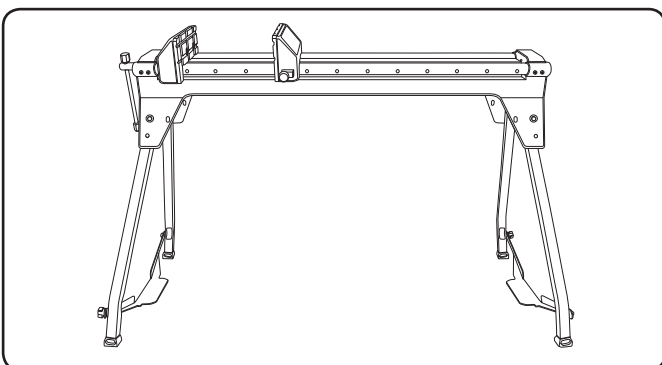


10. Tighten the support brace locking knob to secure the support brace into position.

11. Repeat steps 3 to 10 for the rear legs until all 4 legs are in the upright position and secured with the support braces.



12. Prior to turning over the Uni-Jaws ensure that all 4 locking pins have clicked into the correct holes and the support braces are locked in with the support brace locking knobs.

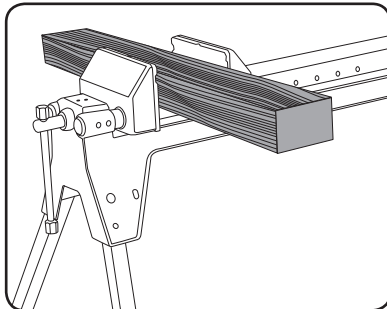


13. Carefully turn over the Uni-Jaws and place it into the upright position.

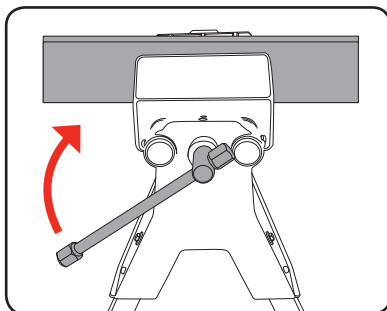
3. CLAMPING

Clamping material

1. Ensure the front vice jaw is located towards the front of the Uni-Jaws.
2. Place the workpiece onto the vice rails in between the front vice jaw and rear vice jaw.



3. Position the rear vice jaw as close as possible to the front vice jaw and ensure it is locked into one of the 12 detents on the vice rails.



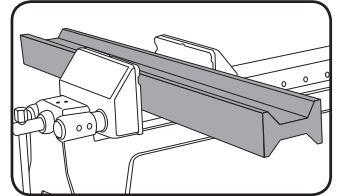
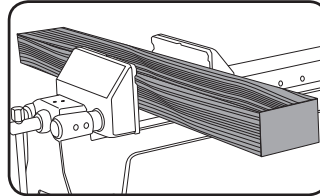
4. Rotate the clamping handle in a clockwise direction to move the front vice jaw towards the rear vice jaw and clamp the workpiece.

5. Rotate the clamping handle until the vice jaws are securely clamping the workpiece.

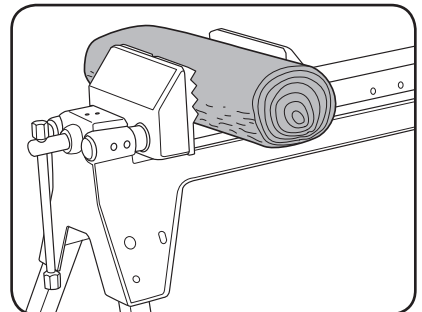
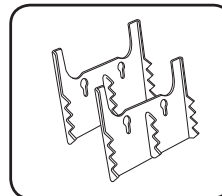
4. LOG JAWS

Fitting the log jaws

1. The Uni-Jaws comes fitted with Urethane jaw facings which can be used for both wood and metal workpieces.

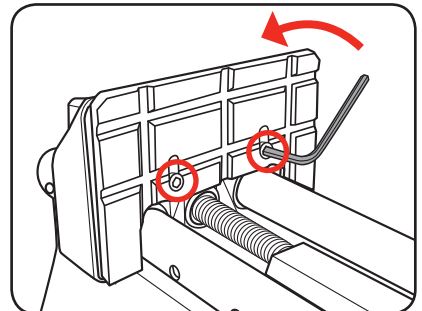


2. When clamping round logs the Uni-Jaws must be fitted with the log jaws.



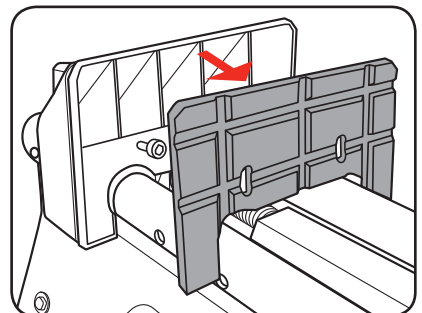
3. To replace the jaws first loosen the 2 hex screws on the front jaw by rotating in an anti-clockwise direction using the 6mm hex key.

4. The hex screws do not need to be completely removed, simply loosen until the jaw facing can be raised.



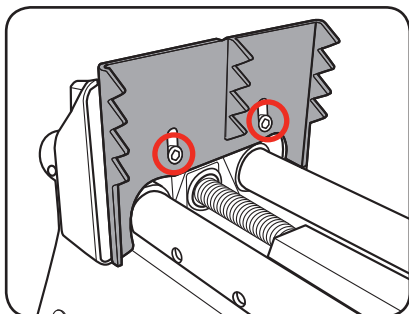
5. Slightly raise the jaw facing and remove from the front vice jaw.

6. Repeat steps 3 to 5 for the rear vice jaw.

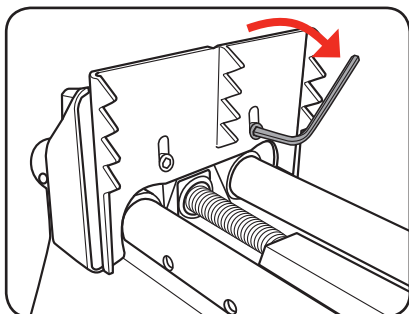


OPERATION cont.

7. Attach the log jaw facing onto the front vice jaw ensuring the 2 hex screws are protruding through the 2 slots in the log jaw.



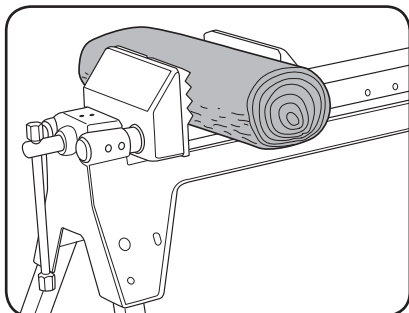
8. Tighten the 2 hex screws by rotating in a clockwise direction using the 6mm hex key.



9. Tighten both hex screws until the log jaw is secure on the vice jaw.

10. Repeat steps 7 to 9 for the rear vice jaw.

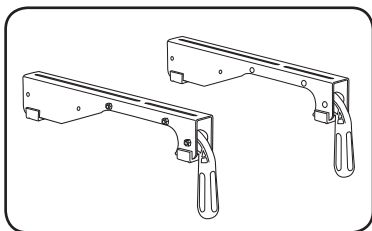
11. The Uni-Jaws can now be used to clamp logs, this is especially useful in chainsaw applications.



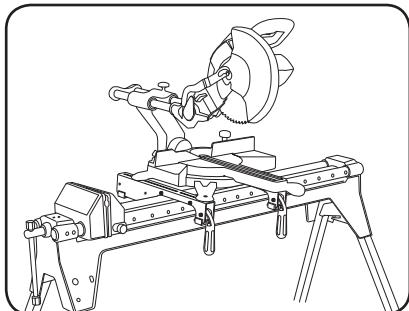
Mitre saw mounts (optional accessory)

Note: The mitre saw mounts (set of 2) are an optional accessory and not supplied with the Uni-Jaws.

1. Mitre saw mounts help extend the capability of the Uni-Jaws.



2. Simply attach the mitre saw mounts to the Uni-Jaws vice rails and turn it into a handy mitre saw stand.



Please contact your local Bunnings Special Orders Desk to order the mitre saw mounts.

Spare Part

Mitre Saw Mounts (Pair)

Part Number

SPUJC860-41

MAINTENANCE

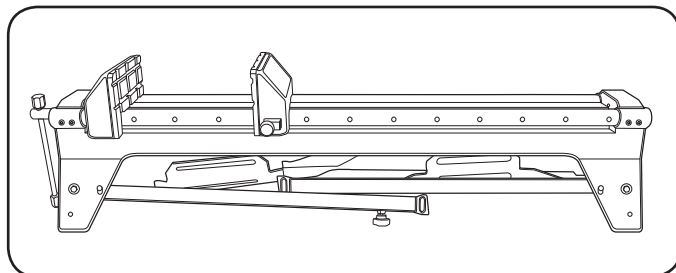
5. GENERAL MAINTENANCE

Cleaning

Wipe away dirt and dust from the stand on a regular basis.

Storage and transport

1. The Uni-Jaws can be easily folded for convenient storage and transportation.



2. Simply follow the "Setting Up" instructions in reverse to fold-up the Uni-Jaws.

Note: When transporting Uni-Jaws in a vehicle always tie it down to prevent movement and possible damage.

Note: Ozito Industries will not be responsible for any damage or injuries caused by the repair of the tool by an unauthorised person or by mishandling of the tool.



GENERAL SAFETY WARNINGS

1. **Keep work areas clean.** Cluttered work areas can cause accidents.
2. **Consider work area environment.** Keep the work area well lit.
3. **Keep children away.** Do not allow children, visitors or animals to come near the work area.
4. **Do not overreach.** Keep proper footing and balance at all times.
5. **Stay alert.** Watch what you are doing. Use common sense. Do not operate a saw mounted to the stand when you are tired.
6. **Users.** This appliance is not intended for use by young children or infirmed persons without supervision. Young children should be supervised to ensure that they do not play with this appliance.



ADDITIONAL SAFETY INSTRUCTIONS FOR UNI JAWS



WARNING! Read and understand all instructions. Failure to follow all instructions listed below may result in personal injury.

- Make sure all moving parts are free from interference.
- Keep hands clear of all moving parts.
- Ensure Uni-Jaws is set-up on firm ground in a stable manner.
- Use Uni-Jaws in a dry place protected from rain.
- Keep work area well-lit.
- Never stand or sit on the Uni-Jaws.
- Be aware of overbalancing. When a large piece is cut from one end of a job, the remaining piece may be heavy enough to over-balance the Uni-Jaws.

- Always ensure the workpiece is well supported.
- When transporting Uni-Jaws in a vehicle always tie it down to prevent movement and possible damage.
- Check to make sure that all fixing screws and knobs are tight and all legs are locked into position before operating the Uni-Jaws.
- The tool must be used only for its prescribed purpose. Any use other than those mentioned in these instructions will be considered a case of misuse. The manufacturer shall not be liable for any damage or injury resulting from such cases of misuse.
- The manufacturer shall not be liable for any changes made to the tool nor for any damage resulting from such changes.

CARING FOR THE ENVIRONMENT



Tools that are no longer usable should not be disposed of with household waste but in an environmentally friendly way. Please recycle where facilities exist. Check with your local council authority for recycling advice.



Recycling packaging reduces the need for landfill and raw materials. Reuse of recycled material decreases pollution in the environment. Please recycle packaging where facilities exist. Check with your local council authority for recycling advice.

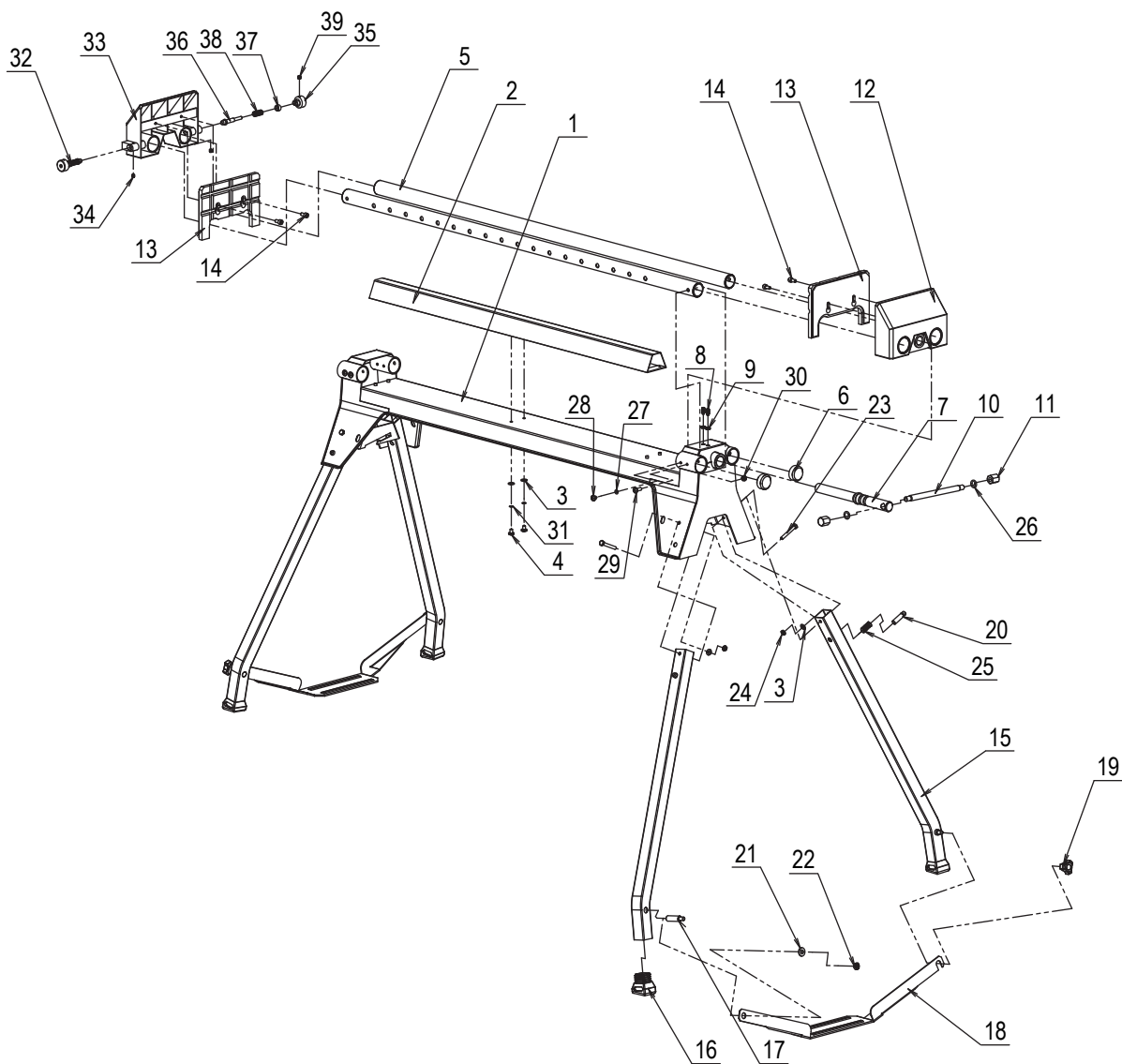
SPARE PARTS

Limited spare parts are available subject to availability. Please contact your local Bunnings Special Orders Desk to order the required spare parts.

Most common spare parts listed below

Spare Part
Mitre Saw Mounts (Pair)

Part Number
SPUJC860-41



The following is a list of spare parts carried by Ozito.
Please contact Customer Service for any parts not listed.

Item No.	Description	Part No.	Item No.	Description	Part No.
41	Mitre Saw Mounts (Pair)	SPUJC860-41			

How To Order

Available spare parts can be ordered through the Special Orders Desk at any Bunnings Warehouse. If you have any further questions, please contact Ozito Customer Service on:
Australia: 1800 069 486
New Zealand: 0508 069 486
enquiries@ozito.com.au

WARRANTY

IN ORDER TO MAKE A CLAIM UNDER THIS WARRANTY YOU MUST RETURN THE PRODUCT TO YOUR NEAREST BUNNINGS WAREHOUSE WITH YOUR BUNNINGS REGISTER RECEIPT. PRIOR TO RETURNING YOUR PRODUCT FOR WARRANTY PLEASE TELEPHONE OUR CUSTOMER SERVICE HELPLINE:

Australia 1800 069 486

New Zealand 0508 069 486

TO ENSURE A SPEEDY RESPONSE PLEASE HAVE THE MODEL NUMBER AND DATE OF PURCHASE AVAILABLE. A CUSTOMER SERVICE REPRESENTATIVE WILL TAKE YOUR CALL AND ANSWER ANY QUESTIONS YOU MAY HAVE RELATING TO THE WARRANTY POLICY OR PROCEDURE.

The benefits provided under this warranty are in addition to other rights and remedies which are available to you at law.

Our goods come with guarantees that cannot be excluded at law. You are entitled to a replacement or refund for a major failure and for compensation for any other reasonably foreseeable loss or damage. You are also entitled to have the goods repaired or replaced if the goods fail to be of acceptable quality and the failure does not amount to a major failure.

Generally you will be responsible for all costs associated with a claim under this warranty, however, where you have suffered any additional direct loss as a result of a defective product you may be able to claim such expenses by contacting our customer service helpline above.

3 YEAR REPLACEMENT WARRANTY

Your product is guaranteed for a period of **36 months from the original date of purchase**. If a product is defective it will be replaced in accordance with the terms of this warranty. Warranty excludes consumable parts, for example: rollers, extension bars, legs and accessories.

The following actions will result in the warranty being void.

- If the tool shows signs of damage or defects caused by or resulting from abuse, accidents or alterations.
- If the tool is disassembled or tampered with in any way.
- Professional, industrial or high frequency use.
- Failure to perform maintenance as set out within the instruction manual.