

**NEPEAN**  
Building &  
Infrastructure

TM

## Weldlok® Stair Stringers



Weldlok® stair stringers are available configured for 2 to 17 treads. Tread mounting brackets can be purchased separately. Galvanised steel stair treads are also available upon request.

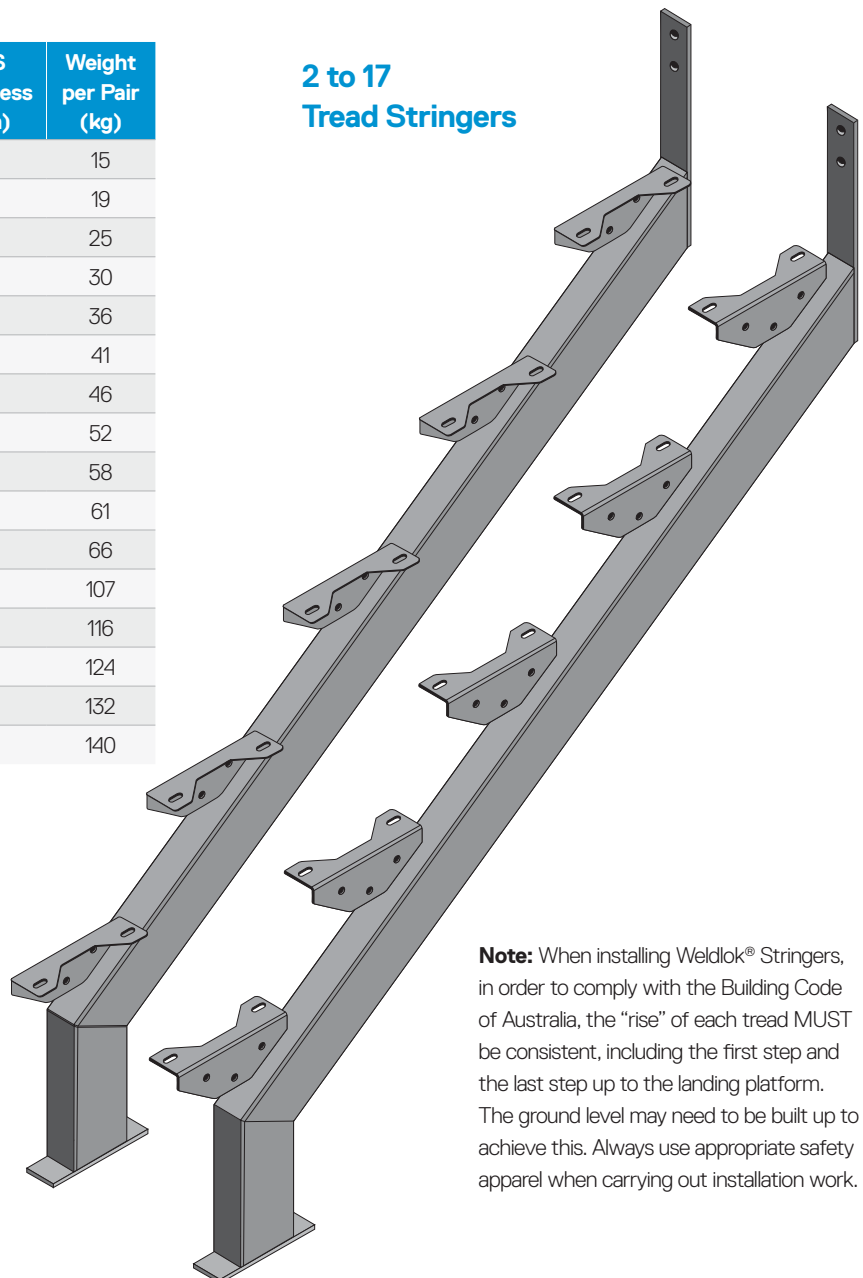
- > Convenient and easy to install.
- > Available off-the-shelf in 2 to 17 tread stringer pairs.
- > Hot-dip galvanised to Australian Standard AS/NZS 4680:2006.
- > Standard with 175mm rise and 250mm going at an angle of 35 degrees.
- > Designed to take a maximum tread width of 1000mm.
- > **In order to comply with BCA a tread depth of 50mm minimum is required.**

### How to calculate the number of treads required

1. Measure the vertical height from the ground to the finished floor level of the landing.
  2. Divide the height by the rise (175mm).
  3. Round the result to the nearest whole number, then reduce by one for top landing.
- Example: Height= 1000 divided by 175 = 5.71 rounded to 6 and reduced by 1 = 5 step stringers required.

Weldlok Product Code	Number of Steps	Vertical Height (mm)	RHS Thickness (mm)	Weight per Pair (kg)
G2TS	2	525	3.0	15
G3TS	3	700	3.0	19
G4TS	4	875	3.0	25
G5TS	5	1050	3.0	30
G6TS	6	1225	4.0	36
G7TS	7	1400	4.0	41
G8TS	8	1575	4.0	46
G9TS	9	1750	4.0	52
G10TS	10	1925	4.0	58
G11TS	11	2100	4.0	61
G12TS	12	2275	4.0	66
G13TS	13	2450	5.0	107
G14TS	14	2625	5.0	116
G15TS	15	2800	5.0	124
G16TS	16	2975	5.0	132
G17TS	17	3150	5.0	140

### 2 to 17 Tread Stringers

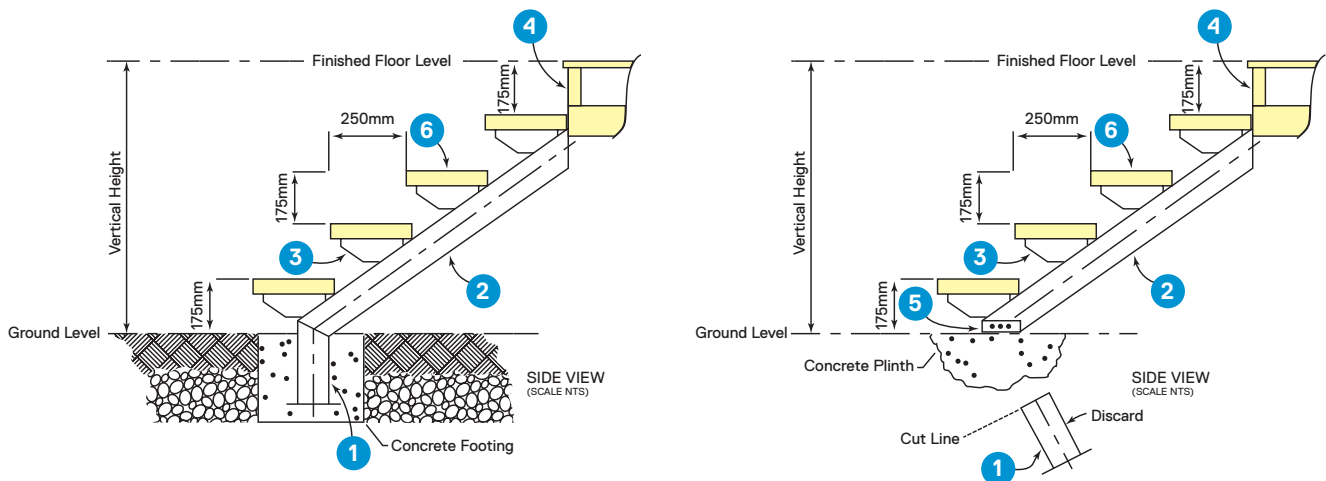


**Weldlok® will not be liable to repair, replace or make good any defect or for any claim, loss, damage or expense arising as a result of a consumer failing to use treads of at least 50mm thick, or treads greater than 1000mm wide as per installation recommendations.**

**Note:** When installing Weldlok® Stringers, in order to comply with the Building Code of Australia, the “rise” of each tread MUST be consistent, including the first step and the last step up to the landing platform. The ground level may need to be built up to achieve this. Always use appropriate safety apparel when carrying out installation work.

# Typical Installation Guidelines

Weldlok® stair stringers are supplied in pairs with tread mounting brackets welded in place, ready for installation. They are hot-dip galvanised for long life and are ready to cast-in or with the addition of the optional bolt-down bracket they can be bolted in position.



## Cast-In

- Measure vertical height and ensure risers are consistent. Ground level may need to be built up to suit.
- Excavate suitable footing.
- Bolt stringer mounting bracket (item 4) to vertical face.
- Concrete the stringer cast-in leg (item 1) into place.
- Fix treads using suitable and appropriate fixings.

## Item No. Description

- Stringer cast-in leg
- Stringer
- Tread mounting bracket
- Stringer vertical mounting bracket
- Optional bolt-down bracket
- Stair tread

**NOTE:** When installing Weldlok® stair stringers, always take note of the installation recommendations affixed to each stringer pair.

## Bolt Down

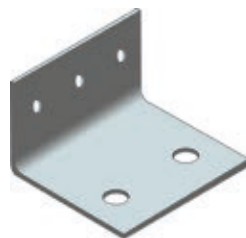
- Measure vertical height and ensure risers are consistent. Ground level may need to be built up to suit.
- Cut off cast-in leg (item 1) to suit.
- Bolt stringer mounting bracket (item 4) to vertical face.
- Tek screw bolt-down bracket (item 5) to each leg.
- Anchor bolt-down bracket to suitable concrete plinth.
- Fix treads using suitable and appropriate fixings.



## Tread Mount Bracket

Product Code TMB

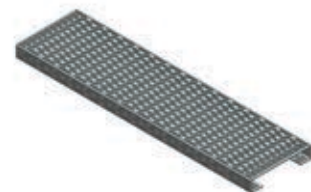
Hot-dip galvanised tread mount brackets are available separately (fixings not included).



## Bolt-Down Bracket (Optional)

Product Code BDB

Hot-dip galvanised brackets are available separately (fixings not included).



## Steel Stair Treads

Hot-dip galvanised stair treads are available on request (fixings not included).

# NEPEAN™



For more information contact us at your nearest location.

## NEPEAN Building & Infrastructure

### National Sales Branches

#### New South Wales

117-153 Rookwood Road  
PO Box 57  
Yagoona NSW 2199  
P: + 61 2 9707 5088  
F: + 61 2 9790 1013  
E: nsw.bi@nepean.com

#### Victoria

171 Derrimut Drive  
Derrimut VIC 3030  
P: + 61 3 9394 1001  
F: + 61 3 9394 1441  
E: vic.bi@nepean.com

#### Western Australia

98 Campbell Street  
Belmont WA 6104  
P: + 61 8 9478 1266  
F: + 61 8 9277 7742  
E: wa.bi@nepean.com

#### Queensland

967 Nudgee Road  
PO Box 283  
Banyo QLD 4014  
P: + 61 7 3633 1333  
F: + 61 7 3633 1313  
E: qld.bi@nepean.com

### Head Office

117-153 Rookwood Road  
PO Box 57  
Yagoona NSW 2199  
P: + 61 2 9707 5000  
F: + 61 2 9790 6145  
E: bi@nepean.com

### NEPEAN Building and Infrastructure

Originally founded as Graham Group is one of Australia's largest fully-integrated manufacturers of large steel structures and associated metal products.

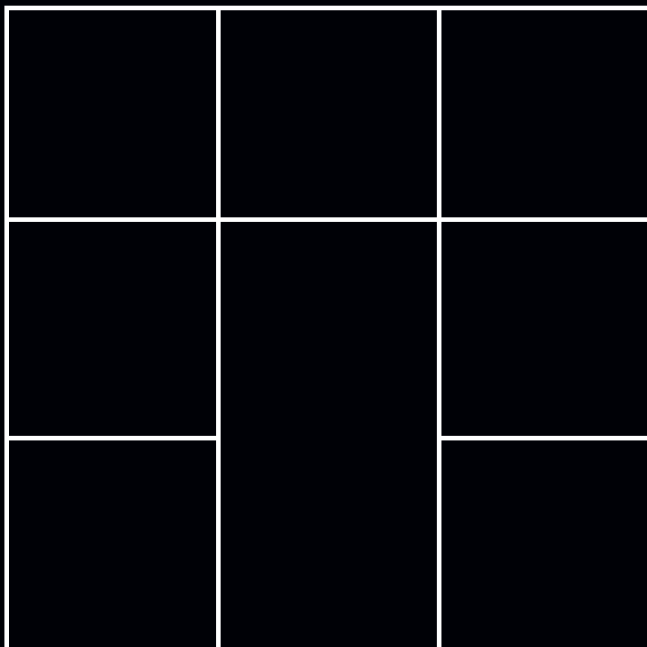
- **Galintel®**  
Galvanised steel lintel bars
- **Weldlok®**  
Grating, handrail and drainage products
- **Mastermesh®**  
Expanded and perforated metals
- **Galserv®**  
Hot-dip galvanising

Weldlok® will not be liable to repair, replace or make good any defect or for any claim, loss, damage or expense arising as a result of a consumer failing to use treads of at least 50mm thick, or treads greater than 1000mm wide as per installation instructions.

Information contained in this brochure is supplied in good faith and with a view to help the user in the correct installation of this product. While every care is taken to ensure the information is correct, no warranty is made nor is any condition expressed or implied. The information contained herein does not constitute an offer nor do we guarantee its accuracy or completeness and assume no responsibility for errors or omissions or for any consequences of reliance on this publication.

© NEPEAN, December 2014

[www.nepean.com](http://www.nepean.com)



TM

**Innovation . Dedication . Specialisation**