

# ozito

## 12V CONSTANT PRESSURE PUMP

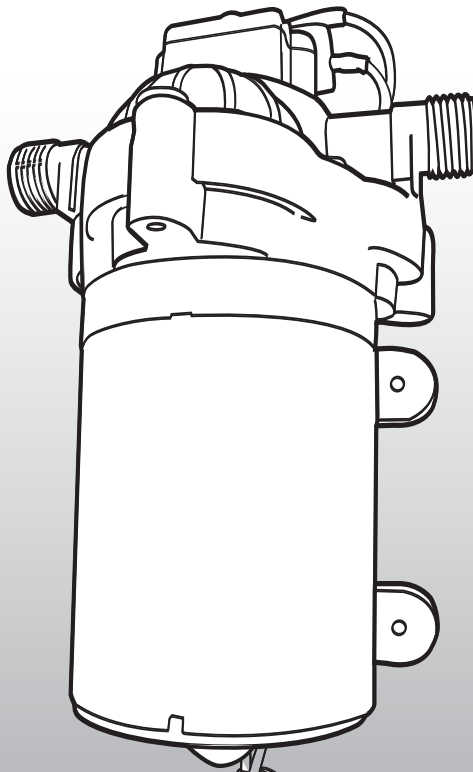
**700 L/H FLOW**

### INSTRUCTION MANUAL

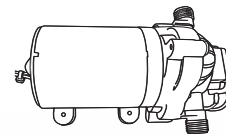
### SPECIFICATIONS

Voltage:	12V DC
Max. Current:	6Amp
Max. Pressure:	70psi (4.8bar)
Max. Flow Rate:	700 litres/hour
Max. Lift:	1.8m
Max. Head:	30m approx.
Inlet/Outlet Size:	12.7mm (1/2") fittings
Water Temp:	5°C - 45°C
Weight:	1.8kg

[ozito.com.au](http://ozito.com.au)



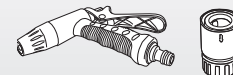
### WHAT'S IN THE BOX



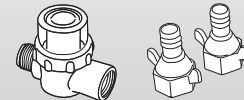
12V Pressure Pump



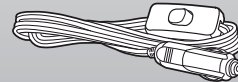
6m Coiled Hose



Trigger Nozzle & Connector



SS Prefilter & 2 x Female  
Hose Connectors



2.1m Cord with On/Off  
Switch & 12V DC Plug

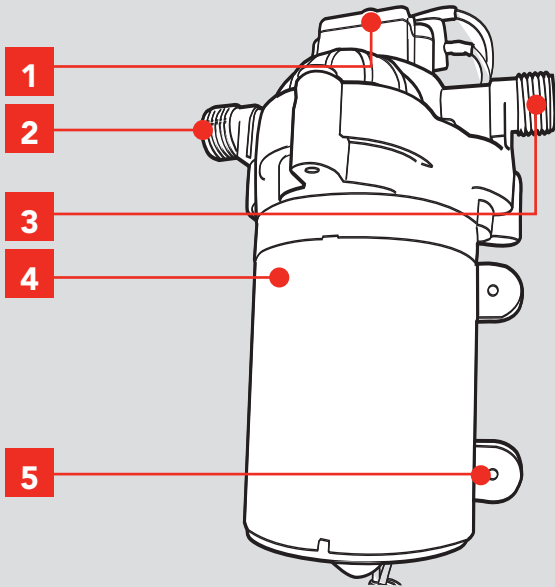
**3** YEAR REPLACEMENT WARRANTY

**CPPK-012**

# KNOW YOUR PRODUCT

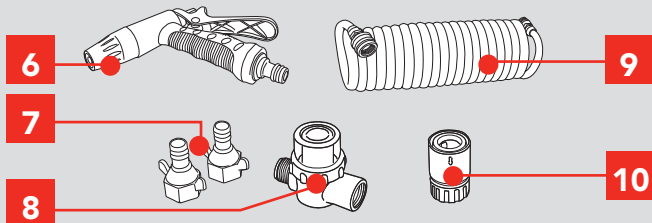
## PRESSURE PUMP

- 1 Pressure Cut-Out Switch
- 2 Discharge Outlet
- 3 Suction Inlet
- 4 Motor Body
- 5 Mounting Feet

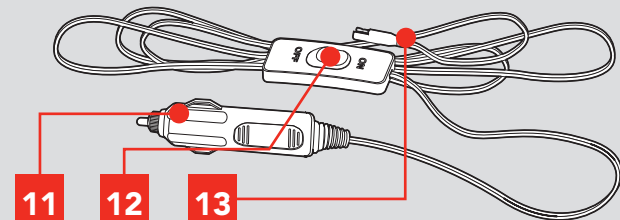


## ACCESSORIES

- 6 Trigger Nozzle
- 7 Female Hose Connectors x 2
- 8 Stainless Steel Prefilter
- 9 6m UV Protected Coiled Hose
- 10 Quick Connector



- 11 12V DC Plug
- 12 On/Off Switch
- 13 Power Cord Connector



## ONLINE MANUAL

Scan this QR Code with your mobile device to take you to the online manual.



# SETUP & PREPARATION

## 1. SUCTION INLET

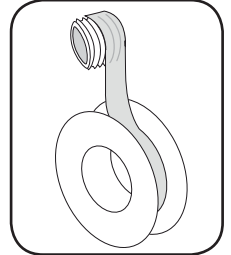


**WARNING: ENSURE THE TOOL IS SWITCHED OFF AND DISCONNECTED FROM THE POWER SUPPLY BEFORE PERFORMING ANY OF THE FOLLOWING STEPS.**

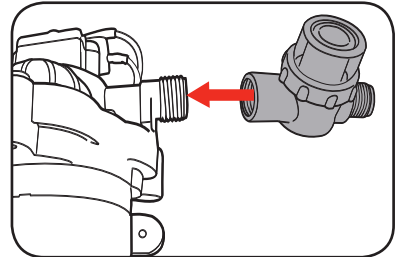
The pump can be used with or without the prefilter. The filter should be used when the water being pumped contains contaminants.

### Connect Prefilter to the Suction Inlet

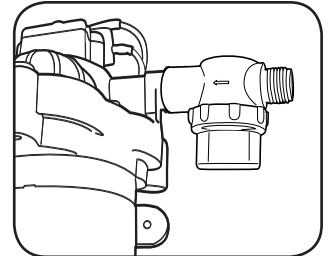
- 1 Teflon tape (not included) is required on threads to ensure a water tight seal and prevent any leakage. Wind Teflon Tape clockwise on threads.



- 2 Wind the prefilter onto the suction inlet of the pump.

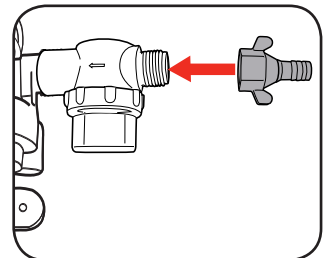


- 3 Depending on the pumps final position the prefilter should be facing towards the ground to work effectively. Tighten firmly by hand.

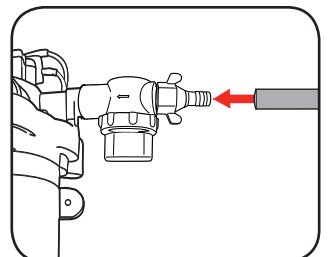
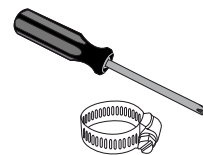


### Connect Hose to the Prefilter

- 1 Wind Teflon Tape clockwise on thread. Attached Female Hose Connector onto Prefilter.



- 2 Attach a suitable hose to the end of the Hose Connector, fit hose clamps (not included) and tighten.

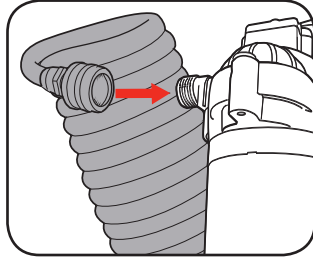


**3** YEAR REPLACEMENT WARRANTY

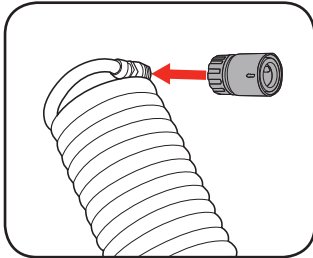
## 2. DISCHARGE OUTLET

### Attaching Coiled Hose and Trigger Nozzle to the Outlet

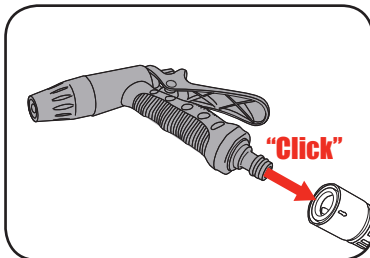
- 1 Wind Teflon Tape clockwise on Discharge Outlet thread. Attach female end of Coiled Hose onto pump Discharge Outlet



- 2 Wind Teflon Tape clockwise on male end of Coiled Hose. Place the Quick Connector to the Coiled Hose .



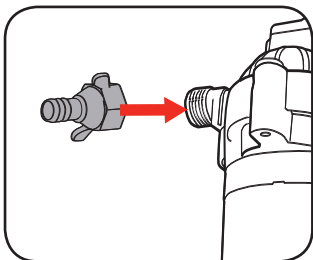
- 3 Attach the Trigger Nozzle to the Quick Connector .



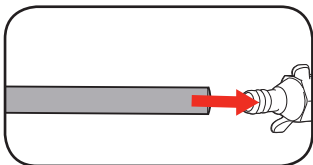
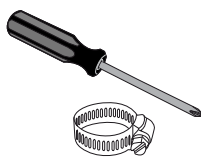
### Attaching Hose to the Outlet

When pump is required for permanent applications and a longer hose is required.

- 1 Wind Teflon Tape clockwise on Discharge Outlet thread. Attach Female Hose Connector onto pump Discharge Outlet

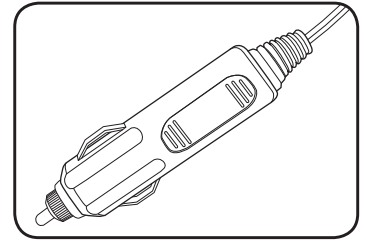


- 1 Attach a suitable hose to the Hose Connector, fit hose clamps (not included) and tighten.

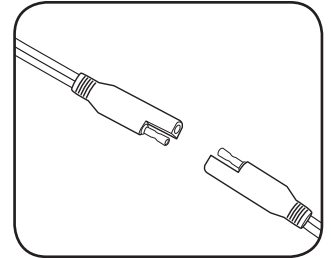


## 3. TURNING ON & OFF

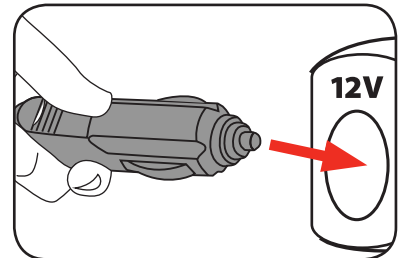
The pump comes supplied with an auxiliary cable. The 12V DC plug on the auxiliary cable enables the pump to be powered from a standard 12V power outlet found in cars, boats and some generators.



- 1 Attach the 12V power cable adaptor to the pump.

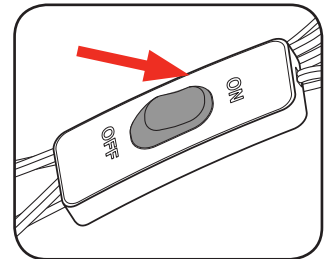


- 2 Plug the 12V adaptor into a suitable power source.

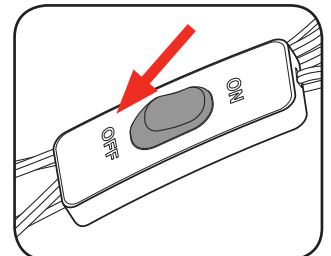


**IMPORTANT!** ENSURE THAT ALL ELECTRICAL WIRING IS SECURED IN PLACE WITH THE CONNECTIONS WELL AWAY FROM THE WATER.

- 3 Switch the on/off switch into the on position.

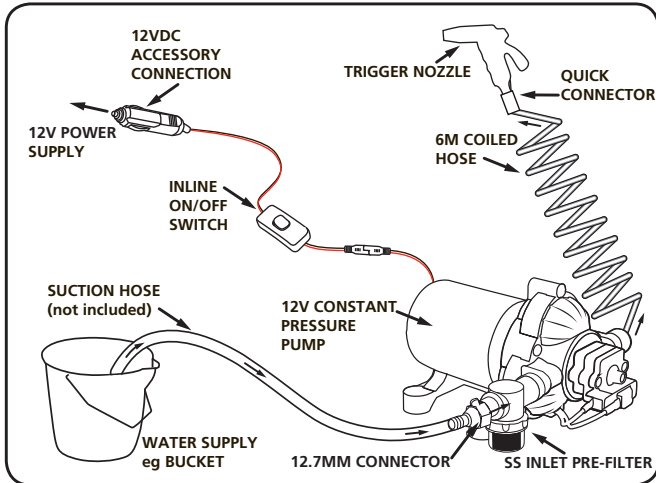


- 3 To turn the pump off switch the on/off switch into the off position.

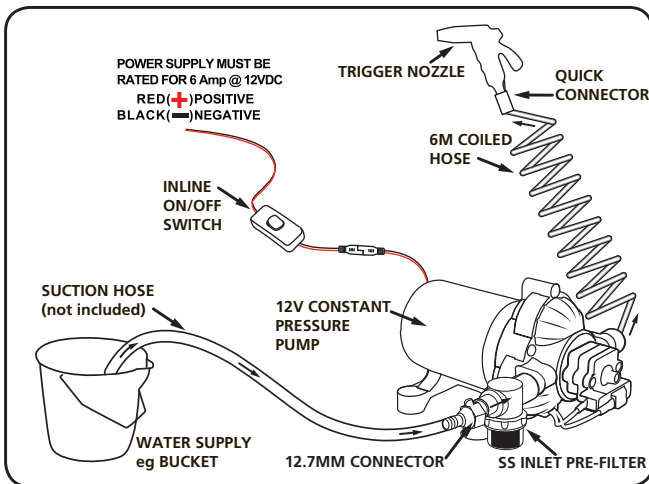


## 4. INSTALLATION

### Installation Guide for Portable Applications



### Installation Guide for Permanent Applications



**WARNING:** THE INPUT HOSE SHOULD BE LOW ENOUGH IN THE WATER TO ENSURE THAT IF THE WATER FALLS, THE PUMP WILL CONTINUE TO OPERATE CORRECTLY. ENSURE THAT THIS IS CHECKED WHEN IN OPERATION.

**NOTE:** A leaking hose or pipe will draw in air and therefore not draw in any water.

**Note:** When not using the supplied auxiliary cable (ie. when setting up a fixed installation), it is recommended that you use a 10 Amp fuse and a 12V/10 Amp power supply.

### Mounting

The following should be considered to achieve optimum pump operation.

- The pump can be mounted at the same level or below the water supply. It may be positioned above the water supply if need, as it is capable of a 1.8m vertical prime. Horizontal inlet will allow priming to 9m.
- The pump can be mounted in any position. If mounting the pump vertically, the pump head should be in the down position for optimum performance.
- The Mounting Feet are intended to isolate the pump from mounting surface; over tightening, flattening, or use of oversized screws will reduce the ability to isolate vibration and noise.

### Positioning the Hose

Position the input hose so that it rises from the water drawing source to the pump. Avoid positioning the input hose higher than the pump, as this would delay the escape of air bubbles from the input hose and impede the priming process.

We recommended at least 0.3m of 12.7mm I/D flexible hose to the inlet and outlet connections. Use hose clamps on hose connections to prevent water leaks.

**Note:** If the water supply is below the level of the pump, fitting a Non Return Valve is recommended to prevent water running back to the water supply.

# MAINTENANCE

# TROUBLESHOOTING

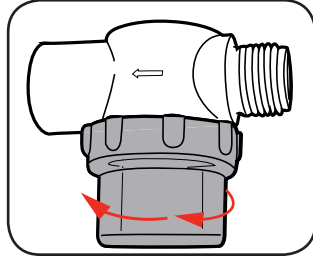
## 5. MAINTENANCE & STORAGE

### Cleaning the Prefilter Unit



**WARNING:** ENSURE THE TOOL IS SWITCHED OFF AND DISCONNECTED FROM THE POWER SUPPLY BEFORE PERFORMING ANY OF THE FOLLOWING STEPS.

- 1 Remove the filter cap and clean debris from filter using a light brush and warm soapy water.



### Storage

The pump itself is not affected by freezing temperatures . However, if the pump is embedded in ice or surrounded by ice, it cannot be used. Never turn the pump on if it is embedded in or surrounded by ice.

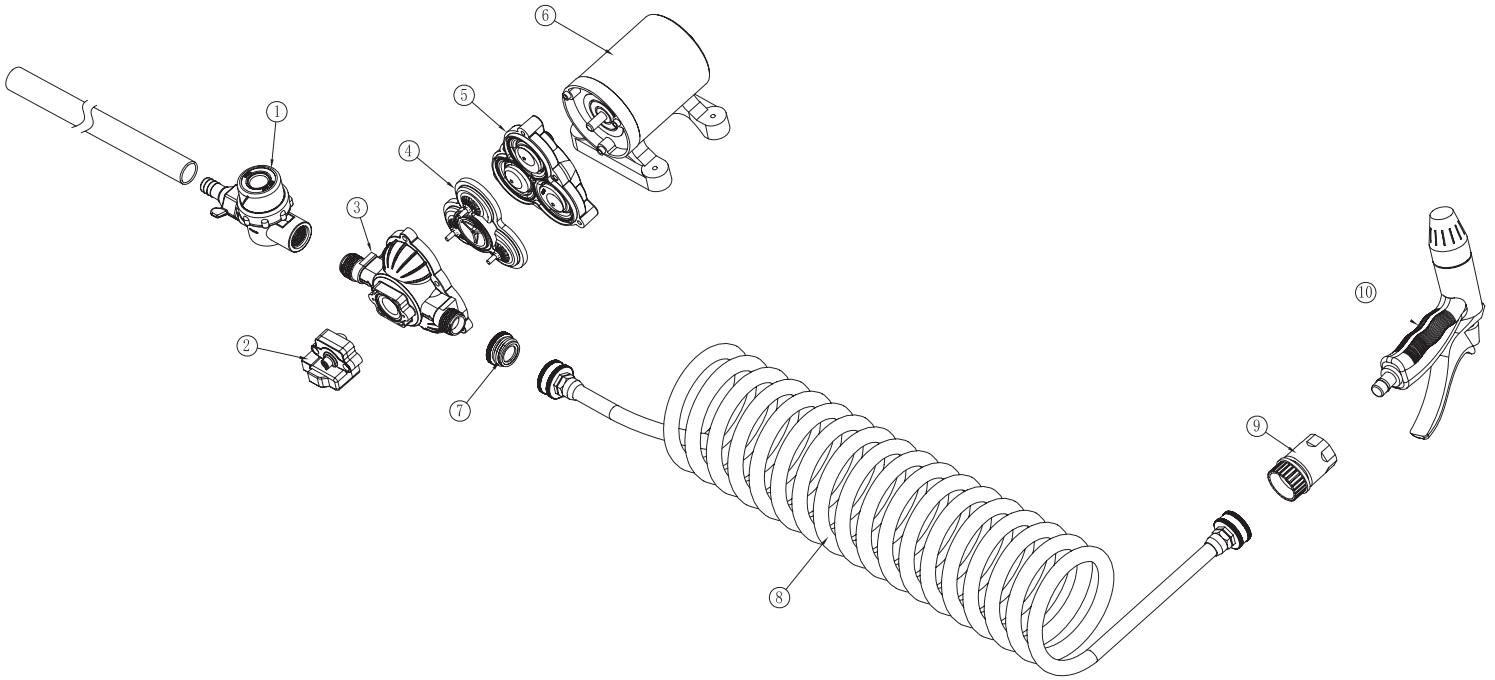
Symptom	Possible Cause	Cure
Pump not working	Blown fuse	Replace fuse in 12V DC Plug
	Thermal overload may have triggered	It will reset when cool
Reduced Flow	Blockage	Clean debris from the prefilter.
	Water line clogged	Clean out hose by back flushing.
	Low battery voltage	Check battery condition and charge if necessary.
	Kinked water hose	Change to a hose that does not kink at the bends.
No water pumped	Wire connections	Make sure wire connections are not corroded. Check to be sure no wire joins are hanging down into the water.
	The pump is sucking air	Ensure all connections and fittings are secured tightly
	The suction height is too high	Ensure the suction height is no higher than 1.8m

## DESCRIPTION OF SYMBOLS

<b>V</b>	Volts	<b>W</b>	Watts
<b>DC</b>	Direct current	<b>mA</b>	Milliamperes
<b>L/H</b>	Litres per hour	<b>IP</b>	Ingress protection from water
	Electrical Emissions Comfomity (EMC)	<b>PVC</b>	Polyvinyl chloride
	Warning		Read instruction manual
	Hot surface. This part gets hot from operation and remains hot a short time after the unit is turned off.		

# SPARE PARTS

Tool: 12V Constant Pressure Pump  
Model No. CPPK-012



The following is a list of spare parts carried by Ozito.  
Please contact Customer Service for any parts not listed.

Item No.	Description	Part No.
01	Filter Assembly	SPCPPK012-01
02	Pressure Switch	SPCPPK012-01
07	Copper Connector	SPCPPK012-07
08	6m Coiled Hose	SPCPPK012-08
9-10	Water Gun Assy.	SPCPPK012-10A

Item No.	Description	Part No.
----------	-------------	----------

## How To Order


Available spare parts can be ordered through the Special Orders Desk at any Bunnings Warehouse. If you have any further questions, please contact Ozito Customer Service on:

Australia: 1800 069 486

New Zealand: 0508 069 486

enquiries@ozito.com.au

# GENERAL PUMP SAFETY WARNINGS

 **WARNING!** Read all safety warnings and all instructions. Failure to follow the warnings and instructions may result in electric shock, fire and/or serious injury.

Save these instructions

## 1. Work area

- Keep work area clean and well lit. Cluttered or dark areas invite accidents.
- Do not operate pumps in explosive atmospheres, such as in the presence of flammable liquids, gases or dust. Pumps create sparks which may ignite the dust or fumes.
- Keep children and bystanders away while operating a pump. Distractions can cause you to lose control.

## 2. Electrical safety

When using 12 Volt equipment, basic safety precautions, including the following, should always be followed to reduce risk of fire, electric shock, personal injury and material damage.

- Do not abuse the cord. Never use the cord for carrying, pulling or unplugging the pump. Keep cord away from heat, oil, sharp edges or moving parts. Damaged or entangled cords increase the risk of electric shock.
- The electric motor has been designed for 12V only. Always check that the power supply corresponds to the voltage on the rating plate.

## 3. Personal safety

- Stay alert, watch what you are doing and use common sense when operating a pump. Do not use a pump while you are tired or under the influence of drugs, alcohol or medication. A moment of inattention while operating pumps may result in serious personal injury.
- Avoid accidental starting. Ensure the switch is in the off position before plugging in.

- Remove any adjusting key or wrench before turning the pump on. A wrench or a key left attached to a rotating part of the pump may result in personal injury.
- Dress properly. Do not wear loose clothing or jewellery. Keep your hair, clothing and gloves away from moving parts. Loose clothes, jewellery or long hair can be caught in moving parts.


## 4. Pump use and care


- Disconnect the plug from the power source before making any adjustments, changing accessories, or storing pumps. Such preventive safety measures reduce the risk of starting the pump accidentally.
- Maintain pumps. Check for misalignment or binding of moving parts, breakage of parts and any other condition that may affect the pumps operation. If damaged, have the pump repaired before use. Many accidents are caused by poorly maintained pumps.
- Use the pump, accessories, in accordance with these instructions and in the manner intended for the particular type of pump, taking into account the working conditions and the work to be performed. Use of the pump for operations different from intended could result in a hazardous situation.

## 5. Service


- Have your pump serviced by a qualified repair person using only identical replacement parts. This will ensure that the safety of the pump is maintained.

# PORTABLE PRESSURE PUMP SAFETY WARNINGS

 **CAUTION:** Not intended for cleaning and other maintenance of swimming pools.

 **WARNING!** This product is intended for pumping water in a home domestic application.


Do not use it for corrosive, abrasive, explosive or dangerous liquids. Fluids other than water will damage the water pump and/or create a fire hazard.

 **WARNING!** This product is not suitable for use with drinking (potable) water.

This appliance is not intended for use by persons (including children) with reduced physical, sensory or mental capabilities, or lack of experience and knowledge, unless they have been given supervision or instruction concerning use of the appliance by a person responsible for their safety.

Children should be supervised to ensure that they don't play with the appliance.

- Ensure the pressure pump is disconnected from mains power when installing
- Do not install or operate the water pump in an explosive environment or near flammable material.
- Do not operate the water pump without liquid.
- Do not run the water pump dry.


 **WARNING!** The water pump together with associated pipework operate under pressure.

Do not disconnect water pump or pipework until internal pressure has been released. Failure to do this could result in personal injury and damage to property.

- Avoid inserting hands into the inlets/outlets of the water pump while it is connected to mains power.
- Before using the water pump, always inspect it visually. Do not use the pump if it is cracked and/or damaged. If the water pump is damaged, contact customer service.

Never work or perform maintenance on the pump without first making sure it has been disconnected from the mains power.

Pollution of the liquid could occur due to leakage of lubricants.

 **IMPORTANT!** The electrical connections must always be made in a dry area. Make sure that electrical connections are protected from inundations. Protect the plug and the power cable from heat, oil or sharp edges. If damaged, the power cable must be replaced by a qualified electrician.

## CARING FOR THE ENVIRONMENT



Pumps that are no longer usable should not be disposed of with household waste but in an environmentally friendly way. Please recycle where facilities exist. Check with your local council authority for recycling advice.



Recycling packaging reduces the need for landfill and raw materials. Reuse of recycled material decreases pollution in the environment. Please recycle packaging where facilities exist. Check with your local council authority for recycling advice.

## SPARE PARTS

Spare parts can be ordered from the Special Orders Desk at your local Bunnings Warehouse.

For further information, or any parts not listed here, visit [www.ozito.com.au](http://www.ozito.com.au) or contact Ozito Customer Service:

Australia 1800 069 486

New Zealand 0508 069 486

E-mail: [enquires@ozito.com.au](mailto:enquires@ozito.com.au)

# WARRANTY

IN ORDER TO MAKE A CLAIM UNDER THIS WARRANTY YOU MUST RETURN THE PRODUCT TO YOUR NEAREST BUNNINGS WAREHOUSE WITH YOUR BUNNINGS REGISTER RECEIPT. PRIOR TO RETURNING YOUR PRODUCT FOR WARRANTY PLEASE TELEPHONE OUR CUSTOMER SERVICE HELPLINE:

**Australia 1800 069 486**

**New Zealand 0508 069 486**

TO ENSURE A SPEEDY RESPONSE PLEASE HAVE THE MODEL NUMBER AND DATE OF PURCHASE AVAILABLE. A CUSTOMER SERVICE REPRESENTATIVE WILL TAKE YOUR CALL AND ANSWER ANY QUESTIONS YOU MAY HAVE RELATING TO THE WARRANTY POLICY OR PROCEDURE.

The benefits provided under this warranty are in addition to other rights and remedies which are available to you at law.

Our goods come with guarantees that cannot be excluded at law. You are entitled to a replacement or refund for a major failure and for compensation for any other reasonably foreseeable loss or damage. You are also entitled to have the goods repaired or replaced if the goods fail to be of acceptable quality and the failure does not amount to a major failure.

Generally you will be responsible for all costs associated with a claim under this warranty, however, where you have suffered any additional direct loss as a result of a defective product you may be able to claim such expenses by contacting our customer service helpline above.

## 3 YEAR REPLACEMENT WARRANTY

Your product is guaranteed for a period of **36 months from the original date of purchase**. If a product is defective it will be replaced in accordance with the terms of this warranty. Warranty excludes consumable parts, for example: o-rings, bearings, seals, gaskets, drain caps, and all accessories.

## WARNING

**The following actions will result in the warranty being void.**

- If the pump has been operated on a supply voltage other than that specified on the tool.
- If the pump shows signs of damage or defects caused by or resulting from abuse, accidents or alterations.
- Failure to perform maintenance as set out within the instruction manual.
- If the pump is disassembled or tampered with in any way.
- Professional, industrial or high frequency use.