

2 PCS

HÄFELE

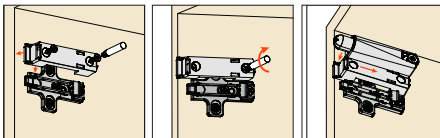
SALICE SOFT CLOSE DOOR DEVICE

For All Non Soft-Close Hinges





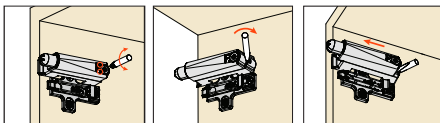
HÄFELE



1. Place the adaptor over one "wing" of the mounting plate. Use the front stop for the correct depth positioning.

2. Fix the adaptor in position using woodscrews.

3. Insert the Smove piston assembly, sliding it in the direction indicated by the arrow.



4. It is possible to reduce or increase the decelerating effect by turning the screw as indicated.

5. To remove the piston assembly, insert a screwdriver in the indicated slot and prise it off.

MADE IN ITALY



HÄFELE AUSTRALIA PTY. LTD 8 MONTEREY RD DANDENONG VIC 3175
ARTICLE # 483.01.699 730.83.617