

EcoFan®

Powered sub floor ventilator



Edmonds® is a proud partner with Sensitive Choice®



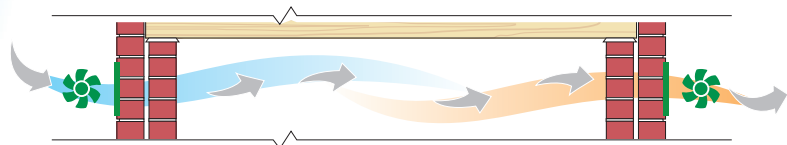
EcoFan® is our powered sub floor ventilator with a powerful air flow to get rid of damp, stale air and odours from, or bring fresh air into under floor areas. Improving the air quality reduces damaging under floor condensation, unwanted pests and vermin and creates a healthier environment.



Condensation Management

Three preset fixed speed settings can be used for the continuous and reliable reduction of damaging condensation and stale, damp air throughout the year.

TWIN PACK NOW AVAILABLE



With a twin pack, create a continuous flow of fresh sub floor air with two EcoFans - one creates an inflow of fresh air, the other extracts the damp, stale air.

Features:

- Made from tough, high quality UV stable polymer
- Maximum flow rate of 734 m³/hr[^]
- Preset automatic temperature controlled variable speed setting or three preset fixed speed settings*
- Available in a twin pack for effective cross ventilation
- Inflow and extraction settings
- High efficiency 24VDC motor
- Two year warranty†

Benefits:

- Effective removal of sub floor damp, stale air and odours
- Helps reduce household allergies and respiratory problems
- Speed controller can be preset to ensure correct air flow to match conditions. Automatic setting useful when temperature exceeds 30°C
- The fan can be configured to power fresh air in or extract damaging and unhealthy air
- Quiet operation, low running costs and reduced energy usage
- Reduces causes of mould, fungi growth and termite attraction

[^]Single unit

*Operating mode needs to be preset during installation. Changes to operating mode may require access to under floor areas.

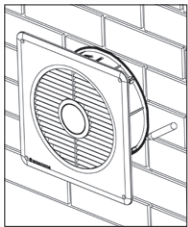
†One year warranty on power pack.

Specifications

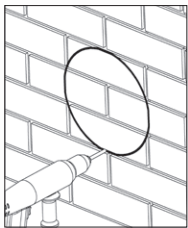
EcoFan		Colours	Material Code		Carton Size (L x W x H)
Flow rate	Up to 734 m ³ /hr	White	Single	112158	355 x 130 x 360
Speeds*	Preset automatic variable speed. Preset fixed speeds: low, medium and high		Twin	134204	355 x 260 x 360
Power supply output and fan motor	24VDC	Brown	Single	112157	355 x 130 x 360
Dome and housing	UV stable polymer		Twin	134203	355 x 260 x 360

*Operating mode needs to be preset during installation. Changes to operating mode require access under floor area.

Installation guidelines

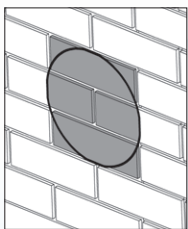


Select appropriate position. Using the fan housing as a guide, mark out a circle/location on the wall.

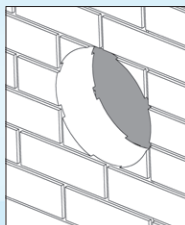
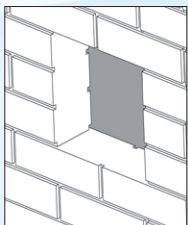


Using an impact drill and 6mm drill bit. Drill holes spaced 3-4 cm around the marked perimeter. Using a hammer carefully knock out the bricks to form a circular hole in the wall.

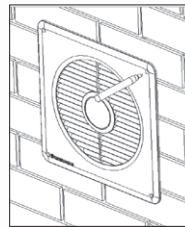
OR



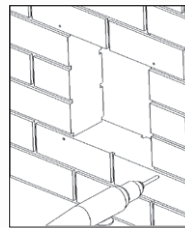
Remove the complete top and bottom shaded bricks. Cut and remove the middle shaded bricks.



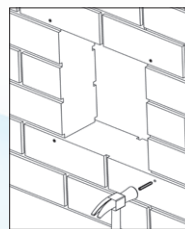
Clear the hole of debris.



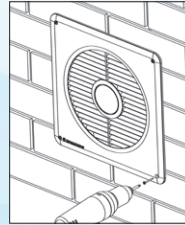
Insert the EcoFan® into the hole. Make sure it is level and the correct way up. Mark the positions of the mounting holes.



Remove the unit and using a 6mm masonry bit, drill mounting holes as marked previously.



Insert supplied wall plugs into the 6mm drilled mounting holes. Tap into hole with hammer until flush.



Using the supplied screws, screw the EcoFan® into the wall plugs.

Detailed warranties, technical data sheets and installation instructions available at edmonds.com.au

For more information call **1300 858 674**

CSR Edmonds
Locked Bag 1345 North Ryde BC NSW 1670

Edmonds® is a registered trademark of CSR Building Products Limited ABN 55 008 631 356.

The COLORBOND® steel colour swatches and images shown in this brochure have been reproduced to represent actual product colours as accurately as possible. However, we recommend checking your chosen colour against an actual sample of the product before purchasing as varying light conditions and limitations of the printing process may affect colour tones. COLORBOND®, BlueScope,™ and © Colour names are registered trademarks of BlueScope Steel Limited.