

Septic Tank

Fully pre-assembled sewerage system complete with baffle

These all new, ultra-strong, low profile septic tanks have passed the stringent test of AS/NZS 1546.1 certification with flying colours.

Outstanding features and benefits are:

- 10 minute hook-up
 - fittings and baffle are pre-installed
- Light weight
 - crane not required
- Australian manufactured
 - offering you maximum support and service
- One-piece tank with lifting lugs
 - easy to handle
- Self-anchoring
 - does not require concrete
- Low profile design
 - minimal excavation depth
- Tested and certified to AS/NZS 1546.1:2008
 - assurance of maximum performance



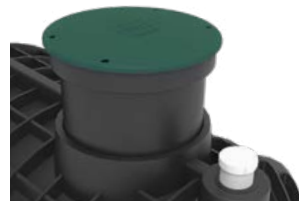
2 sizes available

NO. OF PERSONS*	CAPACITY	DIMENSIONS (mm)	CODE
1-5 people	3,100 Ltr	1665H x 2450L x 1640W	ST3100
6-10 people	4,550 Ltr	1665H x 3520L x 1640W	ST4550

*Number of persons is approximate, please check with your local council.



Inlet and outlet fittings come pre-assembled for a 10 minute hook-up



600mm extension available



Lid suitable for vehicle traffic, tested to 500kg loading



BSI Certified Product

AS/NZS 1546.1:2008

BMP 650823

Australian/New Zealand Standards