

FIRE SENTRY®

PRODUCT MANUAL FSPDC

PHOTOELECTRIC SMOKE ALARM WITH 9 VOLT BATTERY & TEST BUTTON



AS3786:2014
Lic SMK25550
SAI Global

SPECIFICATIONS:

Detection Type	Photoelectric
Power Source	9V DC Battery
Standby Current	<10uA
Alarm Current	<30mA
Alarm Sound Level	>85dB at 3 metres
Alarm Sensitivity	0.1- 0.15dB/m
Operation Temperature	5°C to 45°C
Ambient Humidity	up to 85%
Sound Pattern	
ISO8201(B10.5s - pause 0.5s - BI 0.5s - pause 0.5s - BI 0.5s - pause 1.5s, with the red LED flash, repeat this alarm pattern).	
Compliance Standard	AS3786:2014

The unit is a photoelectric 9V DC smoke alarm. Photoelectric technology is more sensitive to detecting slow smouldering fires which are generally thick with black smoke, little heat and may smoulder for hours before bursting into flames. This smoke alarm does not contain radioactive material.

IMPORTANT: This manual contains important information about the installation and operation of your smoke alarm. Please read carefully before installation and keep for future reference. Please ensure that this leaflet remains in the house where the alarm is installed.

WARNING: This smoke alarm is designed to alert you to the presence of smoke. It cannot prevent a fire. There are hazards against which smoke alarms may not be effective such as smoking in bed, explosions, etc. The ultimate responsibility for fire protection rests with you. This responsibility includes escape planning, safety checks and an effective warning system. In case of fire, a well placed, properly looked after smoke alarm may provide a few seconds so that you can escape and call the fire brigade.

IMPORTANT SAFETY INFORMATION

1. This smoke alarm requires a constant working 9V DC battery to operate properly. This smoke alarm will NOT work if DC power is not connected, has failed or has been interrupted for any reason, the battery is removed, drained or improperly connected. **DO NOT** use any other kind of battery except as specified.

2. The Test button accurately tests all smoke alarm functions. **DO NOT** use any other test method. Test smoke alarm weekly to ensure proper operation.

3. **DO NOT** remove or disconnect battery to silence unwanted alarms. This will remove your protection. Open windows or ventilate the smoke alarm to silence it.

4. This smoke alarm may be installed by a licensed, qualified electrician or by a competent individual. Observe and follow all local and national electrical and building codes for installation.

5. This smoke alarm is designed to be used inside a single unit dwelling only. In buildings with several dwellings, each individual living unit should have its own smoke alarms. **DO NOT** install in non-residential buildings. This smoke alarm is not a substitute for a complete alarm system.

6. Install a smoke alarm in every room and on every level of the home. Smoke may not reach the smoke alarm for many reasons. For example, if a fire starts in a remote part of the home, on another level, in a chimney, wall, roof or on the other side of a closed door, smoke may not reach the smoke alarm in time to alert household members. A smoke alarm will not promptly detect a fire except in the area or room in which it is installed.

7. Smoke alarms may not alert every household member every time. The alarm sound is loud in order to alert individuals to a potential danger. However, there may be limiting circumstances where a household member may not hear the alarm (i.e. outdoor or indoor noise, sound sleepers, drug or alcohol usage, hard of hearing, etc.). If you suspect that this smoke alarm may not alert household members, install and maintain specialty alarms. Household members must hear the alarm's warning sound and respond, to quickly reduce the risk of damage, injury or death that may result from fire. If a household member is hearing impaired, install special smoke alarms with lights or vibrating devices to alert occupants.

8. Smoke alarms can only sound their alarms when they detect smoke. Smoke alarms detect combustion particles in the air. They do not sense heat, flame or gas. This smoke alarm is designed to give an audible warning of a developing fire. However, many fires are fast burning, explosive or intentional. Others are caused by carelessness or safety hazards. Smoke may not reach the smoke alarm quickly enough to ensure safe escape.

9. Smoke alarms have limitations. This smoke alarm is not foolproof and is not warranted to protect lives or property from fire. Smoke alarms are not a substitute for insurance. Homeowners and renters should insure their lives and property. In addition, it is possible for the smoke alarm to fail at any time. For this reason, you must test the smoke alarm weekly and replace every 10 years.

NOTE: For best protection, we recommend that you install a smoke alarm in every room.

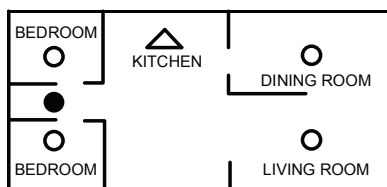
WHERE TO INSTALL YOUR ALARM

For best safety, install smoke alarms in every room: Including hallways, bedrooms, living rooms, attics & basement. At the very least, one smoke alarm on every floor.

SMOKE ALARM PLACEMENT

Typical single-storey home

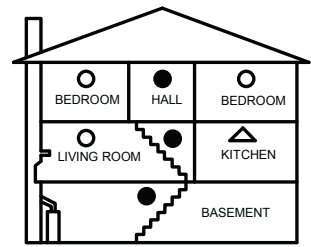
Install a smoke alarm on the ceiling or wall inside each bedroom and in the hallway outside each separate sleeping area. If a bedroom area or hallway is more than 9 metres (30 feet) long, install a smoke alarm at each end. If there is a basement, install a smoke alarm on the basement ceiling at the bottom of the stairwell.



SINGLE-STOREY RESIDENCE, APARTMENT, MOBILE HOME

Typical Multi-storey or split level home

Install a smoke alarm on the ceiling or wall inside each bedroom and in the hallway outside each separate sleeping area. If a bedroom area or hallway is more than 9 metres (30ft) long, install a smoke alarm at each end. Please install a smoke alarm on the top of a first-to-second floor stairwell.



MULTI-STOREY RESIDENCE

KEY:

- Minimum required smoke alarm locations
- Recommended additional smoke alarm locations
- △ Smoke alarms with hush features recommended for additional protection

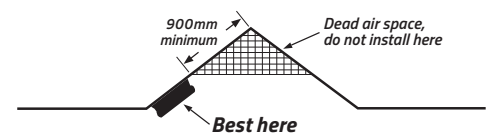
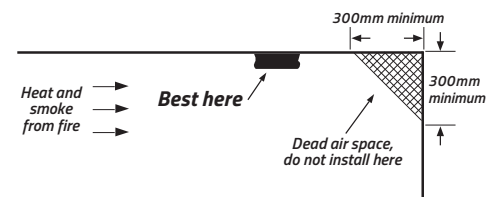
RECOMMENDED PLACEMENT OF SMOKE ALARMS

Locate a smoke alarm in any area where a smoker sleeps or where electrical appliances are operated in sleeping areas.

Smoke, heat and other combustion products rise to the ceiling and spread horizontally. Mounting the smoke alarm on the ceiling in the centre of the room places it closest to all the points in the room. Ceiling mounting is preferred in ordinary residential construction. However, in mobile homes, wall mounting on an inside partition is preferred to avoid the thermal barrier that may form in the ceiling.

IMPORTANT SMOKE ALARM PLACEMENT INFORMATION

1. Place as close as possible to the centre of the ceiling and no closer than 300mm to any wall or corner.
2. Install a smoke alarm in each room that is divided by a partial wall.
3. Install a smoke alarm in lived-in attics or attics which house electrical equipment like furnaces, air conditioners, or heaters.



WHERE NOT TO INSTALL SMOKE ALARMS

1. Areas near appliances or where normal combustion regularly occurs (near furnaces, hot water heaters).
2. In areas with high humidity, like bathrooms, near dishwashers or washing machines. Install at least 3 metres away from these areas.
3. Air returns or heating and cooling supply vents. Install at least 900mm away from these areas. The air could blow smoke away from the detector, interrupting its alarm.
4. In rooms where temperatures may fall below 5°C or rise above 45°C, or in rooms where the humidity rises above 85%.
5. In extremely dusty, dirty, or insect-infested areas where loose particles interfere with smoke alarm operation.

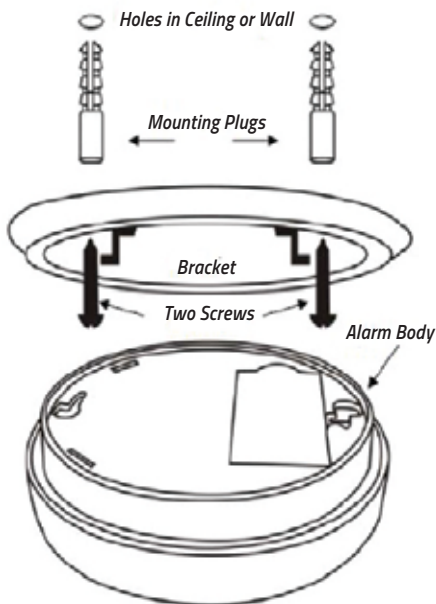
WARNING: Incorrect orientation will result in a decrease in operational effectiveness.

INSTALLATION AND MOUNTING INFORMATION

WARNING: Smoke alarm installation must be in accordance with the requirements of the national electrical code and any local codes that may apply and by a competent person.

IMPORTANT: Before installing this smoke alarm ensure that no electrical cabling and or plumbing will interfere with the installation of this smoke alarm. **Use an appropriate fastening system to secure the mounting bracket to the substrate.**

1. Turn the alarm body counter-clockwise to remove from bracket.
2. Place the mounting bracket on the ceiling surface or wall and use a pencil to mark the position of the mounting holes. Move the mounting bracket and drill the two small holes.



5. Connect the 9V DC battery to the power input connector and place the battery into the battery box. Remember to remove plastic wrapping from battery before installing.
6. Fit the alarm to the bracket and turn the body clockwise until secured in place.
7. Press the Test button to test the smoke alarm (refer to Operation, Testing and Maintenance). If the smoke alarm fails to test correctly refer to the Troubleshooting Section.

WARNING: To prevent injury this unit must be securely attached to the wall or ceiling in accordance to the installation instructions.

OPERATION, TESTING AND MAINTENANCE

Operation

Normal Operation When no smoke is present, a RED LED Indicator will flash once every 32 seconds and is an indication that the unit is operating properly. **Alarm Condition**

When the unit detects smoke, the **RED LED Indicator** will flash rapidly and alarm will sound loudly until the air is clear.

Testing

Test the smoke alarm weekly to ensure correct installation and proper operation by pressing and holding the Test button for at least 5 seconds, this will sound the alarm showing that the electronic circuitry, horn and battery are working. If no alarm sounds, the unit may have a defective battery or fault (refer to Troubleshooting section for further information).

Testing the smoke alarm is ONLY to be performed by pressing the Test button.

DO NOT use an open flame to test this smoke alarm. You may ignite and damage the smoke alarm and property.

Stand at arm's length from the smoke alarm when testing.

Smoke Alarm Indicators

This alarm is equipped with a **RED LED Indicator** with different modes of operation:

NORMAL OPERATION: A **RED flash once every 32 seconds** indicates that the smoke alarm is operating properly.

ALARM: A **RED flash once every second** when the Test button is pressed or when the smoke alarm senses particles of combustion and enters alarm mode (with a constant pulsating sound).

LOW BATTERY INDICATOR: Occurs when the smoke alarm sounds a chirp and flashes the RED LED Indicator once every 32 seconds for a minimum of 7 days. This indicates the battery is low refer to Battery Replacement. Ensure the battery is replaced as soon as possible.

FAULT: Occurs when the unit generates a 'chirp' **between two RED flashes once every 32 seconds**. This indicates that the smoke alarm has a fault (refer to Troubleshooting Section for further information).

WARNING: If the alarm sounds and the smoke alarm is not being tested, the smoke alarm is sensing particles of combustion. The sound of the alarm requires your immediate attention and action.

WARNING: DO NOT disconnect battery to silence an unwanted alarm. This will remove your protection. Ventilate the unit or open a window to remove smoke or dust.

MAINTENANCE

The smoke alarm is virtually maintenance free. However, under dusty conditions, a vacuum hose may be used to clear dust through the side opening. It is recommended to clean the alarm monthly to keep best performance. Normally, the alarm can be operated up to 10 years without replacement. See the replacement date on the back of the alarm unit. **DO NOT** attempt to remove the cover to clean inside the smoke alarm. This will void your warranty.

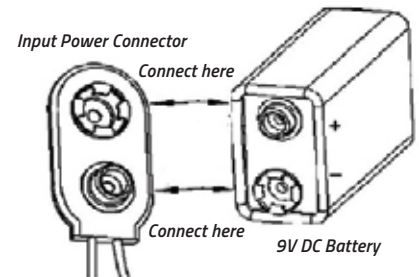
NOTE: If a nuisance alarm occurs and if there is no sign of smoke, heat or noise to suggest a fire you should get your family to a safe place before investigating. Check the household carefully in case there is a small fire smouldering out of sight, or if there is another source of smoke or fumes such as cooking fumes being drawn past a smoke alarm by an extractor.

WARNING: If there are frequent nuisance alarms it may be necessary to re-locate the device away from the source of the fumes. If the alarm continues sounding nuisance alarms without smoke or heat being present it may require some maintenance or cleaning.

Should maintenance and cleaning fail to stop the alarm sounding refer to the Troubleshooting section.

BATTERY CONNECTIONS

The power of this smoke alarm is provided by one 9V DC battery. The battery should last for at least 1 year under normal operating conditions. The smoke alarm has a low battery indicator, an audible 'chirp'. It will operate at 32 second intervals for a minimum of 7 days. Replace the battery when this indication occurs. Only the following 9V DC batteries (which are available at hardware or electronic parts stores) may be used for replacement.



BATTERY SPECIFICATIONS

Rating voltage: DC 9V (Carbon Zinc, Alkaline, Lithium Battery)

Carbon Zinc Battery:

Gold Peak: GP1604S by GPI International (Shenzhen) Ltd.

Alkaline Battery:

Raymax: 6LR61 by Zhejiang Mustang Battery Co., Ltd.

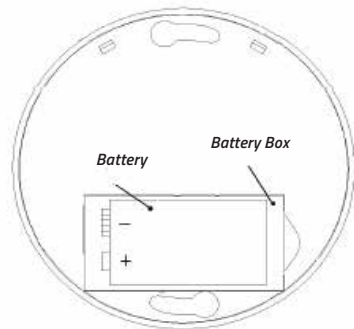
Duracell: 6LR61 or MN1604 by Duracell/P&G company;

Gold Peak: GP1604A by GPI International (Shenzhen). Ltd.

Lithium Battery: EVE:CR9V/P by EVE Energy Co., Ltd.

BATTERY REPLACEMENT

1. Turn the alarm counter clockwise to remove alarm from the bracket.
2. Open battery box to remove existing battery from input power connector and place new battery in battery box.
3. The **RED LED Indicator** will flash once every 32 seconds.
4. Fit the alarm back to bracket and turn alarm clockwise until alarm is secured to bracket. Remember smoke alarm will not fit to bracket if there is no battery in the battery box.



5. Test the smoke alarm using the Test button (refer to Operation, Testing and Maintenance).

WARNING: DO NOT use any other type of battery, other than as specified in this manual. DO NOT use rechargeable batteries.

CAUTION: If the battery is incorrectly replaced, the smoke alarm will not operate and may cause damage.

TROUBLESHOOTING

Problem 1

The smoke alarm does not sound when the Test button is pushed. (Remember to hold the Test button for at least 5 seconds)

Remedy 1

Clean the smoke alarm according to instructions in the Maintenance and Cleaning section. Press the Test button. If the smoke alarm fails to test correctly replace the 9V DC battery. If after replacing the 9V DC battery, the smoke alarm does not sound replace the smoke alarm (only during 2-year warranty period) or purchase another smoke alarm.

Problem 2

The smoke alarm shows the RED LED Indicator and chirps once every 32 seconds.

Remedy 2

The smoke alarm is indicating that the 9V DC battery is low and requires replacement. It should be replaced immediately.

Problem 3

The smoke alarm 'chirps' between two RED flashes once every 32 seconds

Remedy 3

Clean the smoke alarm according to instructions in Maintenance section. If after cleaning the smoke alarm continues to 'chirp,' replace the smoke alarm (only during 2-year warranty period) or purchase another smoke alarm.

Problem 4

The smoke alarm sounds unwanted or nuisance alarm intermittently or when cooking or showering.

Remedy 4

Clean the smoke alarm according to instructions in Maintenance section. If after cleaning the smoke alarm continues to sound unwanted alarms it should be moved further away from the trigger (e.g. stove or shower). If the smoke alarm continues to sound unwanted or nuisance alarm intermittently and has been moved further away from the trigger replace the smoke alarm (only during 2-year warranty period) or purchase another smoke alarm.

Problem 5

The smoke alarm sounds different from the usual sound pattern.

Remedy 5

Clean the smoke alarm according to instructions in Maintenance section. If after cleaning the smoke alarm continues to sound incorrectly (either in normal operation, testing or alarm mode) return the smoke alarm to the store for replacement (only during 2-year warranty period) or purchase another smoke alarm.

NOTE: If the smoke alarm fails to operate correctly the advice of the supplier should be sought.

WHAT TO DO IN CASE OF A FIRE

- If there is a fire in your home, the precautions described will increase your chance of escaping safely. The following rules should always be highlighted during fire drills so that they are remembered in the case of a real emergency.

- Stay calm and think clearly about the pre-arranged escape plan.

- Leaving the house as soon as possible following the planned escape route. Do not stop to collect personal belongings.

- Check doors to see if they are hot. If the door is hot, do not open it - use another escape route.

- Keep all doors and windows shut, only open as a means of escaping.

- Smoke rises, so keep close to the floor - if necessary crawl.

- Take short breaths and if possible, cover your mouth and nose with a wet cloth.

- Make your way to the pre-arranged meeting point and call the fire brigade. Give your full name and address.

- Never re-enter a burning house. For further information on fire safety and prevention, contact your local fire prevention officer.

WARNING: DO NOT try to disassemble this smoke alarm, as it may damage or impede the operation. No user serviceable parts inside. The warranty will become void if misuse or abuse is apparent. This 10 year warranty is also conditional on this unit being installed by a licensed electrical contractor in accordance with local building codes.

2 YEAR WARRANTY

The smoke alarm is warranted to be free from defects in materials and workmanship for two (2) years from the date of purchase and is not transferable under normal use. The warranty does not cover natural disasters such as fire, flood, hurricanes and tornados. Warranty is conditional on the smoke alarm being used in the normal way and not being modified or subject to attempted repairs or contamination. The warranty excludes the battery, incidental and consequential damages. Your statutory rights as a consumer are in no way compromised by this warranty. Master Distributors Pty Ltd agrees to repair or replace, at its option, any defective smoke alarm provided it is returned personally or by prepaid delivery with a copy of proof of purchase. This warranty does not cover damages resulting from lack of reasonable care of the product.

Our goods come with guarantees that cannot be excluded under the Australian Consumer Law. You are entitled to a replacement or refund for a major failure and for compensation for any other reasonably foreseeable loss or damage. You are also entitled to have the goods repaired or replaced if the goods fail to be of acceptable quality and the failure does not amount to a major failure.

Subject to those non-excluded rights and provisions and the above warranty, Master Distributors Pty Ltd will not be liable for injury to persons, damage to property, or for any direct or indirect or consequential damage as a result of negligence or fault on the part of Master Distributors Pty Ltd or its servants, agents, suppliers and contractors or otherwise arising out of or resulting from, whether directly or indirectly, the use, installation or maintenance of the smoke alarm and any warranties or representations are excluded unless given by Master Distributors Pty Ltd in writing. Please leave this document, or a copy, for the end user.

In an
emergency dial:

Australia

000

New Zealand

111

Please dispose of product packaging thoughtfully.



31 Dunlop Road Mulgrave Victoria 3170
Ph 03 9538 9200 Fax 03 9538 9299
sales@masterdistributors.com.au
www.masterdistributors.com.au