



MAKE IT EASY
Protector^{AI}

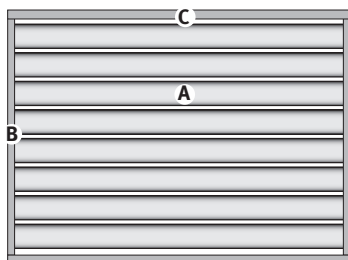
Josh and Jenna show you how
at www.protectoraluminium.com.au



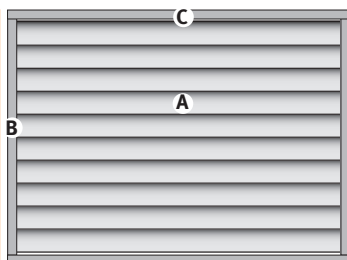
EASY SCREEN

INSTALLATION GUIDE

EASY SCREEN SPECIFICATIONS



Max width 2000mm



Max height 2000mm

Max width 2000mm

SLAT

(PART A) Blades 76x16x1994mm

(PART B) Slat End Rails
20x20x2000mm

(PART C) Slat Top/Bottom Rails
25x25x2000mm

(Rails and Blades can be cut to fit the size you require)

Fixing Brackets – 25x20 angle x 80mm – packs of 4

Screws – Wafer Head 16mm long – packs of 50

(4 screws required per blade and 8 screws per Top/Bottom Rail)

LOUVER

(PART A) Blades 76x16x1994mm

(PART B) Louver End Rails
L & R required 50x25x2000mm

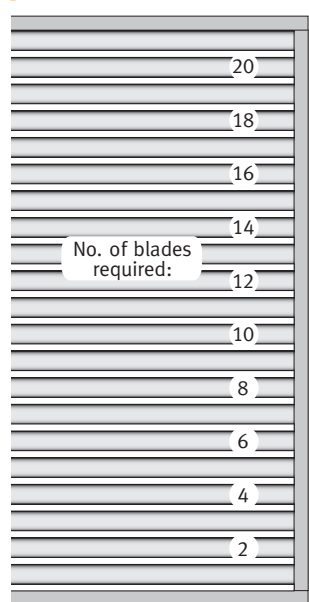
(PART C) Louver Top/Bottom Rails
55x25x2000mm

BLADE CALCULATOR

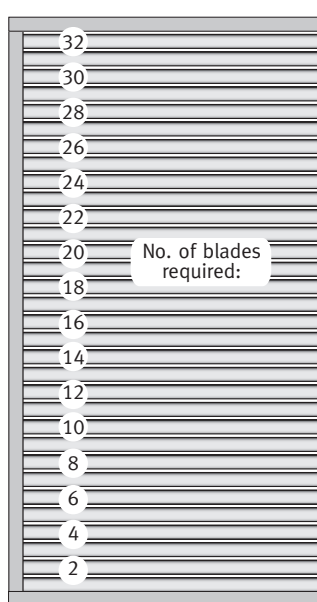
The calculator shows at a glance the number of blades (PART A) required to fit maximum height 2000mm.

SLAT

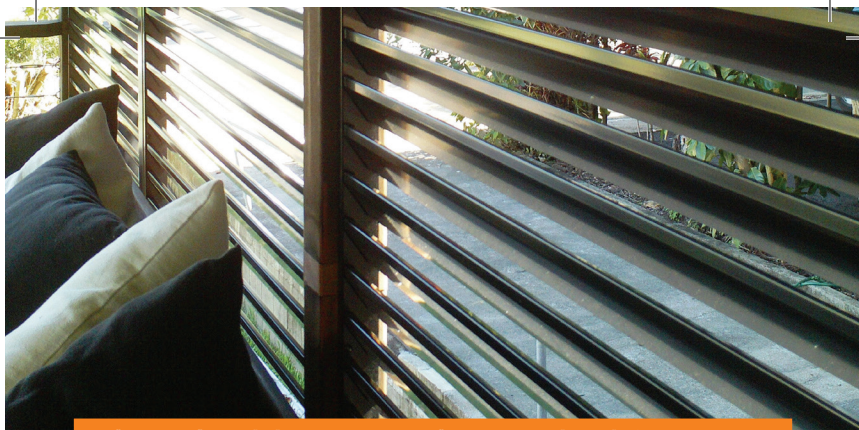
Height in mm



LOUVER



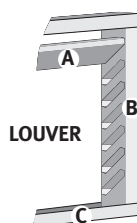
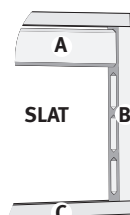
bunnings.com.au



HOW TO ASSEMBLE YOUR EASY SCREEN

Tools Required: Pencil, String-line, Tape Measure, Spirit Level, Drill, Tek Gun/Drill, Angle Grinder/Hacksaw

1. Cut Blades (A) 5mm shorter than total width of Screen.
2. Cut Side Rails (B) 4mm shorter than total height of Screen.
3. Cut Top/Bottom Capping (C) to total width of Screen.
4. Insert Blades into side Rails (B).
Fit top/bottom capping (C).
5. Screw Top/Bottom Capping to side Rails.
Screw side Rails to Blades through holes provided.

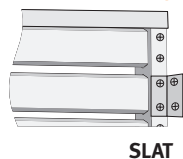


HOW TO INSTALL YOUR EASY SCREEN

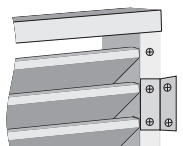
If using the Easy Screen Fixing Brackets:

1. Remove the two screws from each side of the screen as shown.
2. Fit bracket in position so the holes line up and re-fit the screws. Repeat for the other brackets as required.
3. Hold the Easy Screen in place and mark hole position.
4. Position screen and screw in place through the Fixing Brackets

Bracket Positioning



SLAT

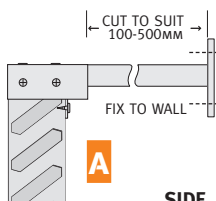


LOUVER

If using Easy Screen Mounting Brackets:

1. Mark and cut bracket (A) to required length
2. Fix bracket in position with suitable fixing screws.
3. Position and fix the Mounting Brackets (B) to the back of the Screen using self-drilling screws or rivets.
4. Position and mark the hole to the wall.
5. Fix the Screen to the wall with suitable fixing screws.

Awning Bracket Fixing



SIDE



FRONT

CUSTOM SERVICE AVAILABLE



If you can dream it, we can make it! Any size, any colour. Visit Bunnings Warehouse Special Orders for details.



9 338797 020828