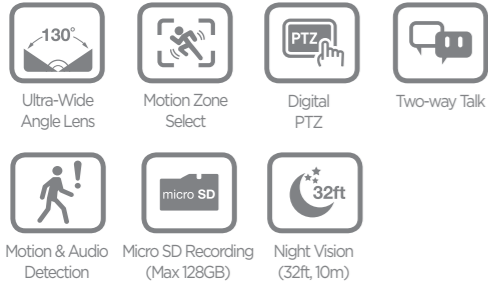
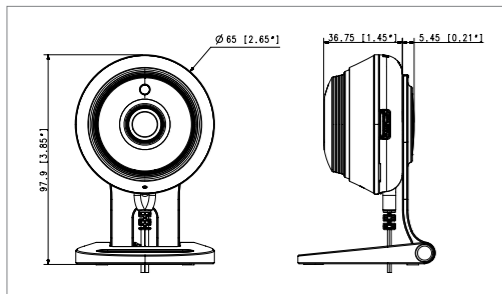


# 1080p Full HD Wi-Fi Camera SNH-C6417BN



## Dimensions

Unit : mm (inch)



## Contents

- Quick Guide
- Power Adapter
- Screw and Anchor(2set)
- Warranty Card

## Specifications

SNH-C6417BN	
<b>Video</b>	
Imaging Device	1/3" CMOS
Effective Pixels	1944(H) x 1092(V)
Scanning System	Progressive
Min. Illumination	0.3Lux(Color), 0Lux(Black / White)
<b>Lens</b>	
Focal Length (Zoom Ratio)	2.8mm
Angular Field of View	D : 130° / H : 113° / V : 63°
Focus Control	Fixed Lens
<b>Operational</b>	
IR LED	850nm
Viewable Length	10m
On Screen Display	Time Display Only(on/off)
Day & Night	True D/N
Wide Dynamic Range	HDR
Lens Distortion Correction	Off / On
Contrast Enhancement	Auto
Digital Noise Reduction	Support (2D+3D Noise Filter)
Digital Image Stabilization	N/A
Motion Detection	Off / On
Audio Detection	Off / On
White Balance	Auto
Digital Zoom	4x(Viewer)
Flip / Mirror	Off / On
Intelligent Video Analytics	Motion Zone Selection(3 Motion Zone)
Memory Slot	SDXC Memory Slot (Max 128GB)
<b>Network</b>	
Ethernet	N/A
Wireless	Wi-Fi 802.11b/g/n (Single Band)
Video Compression Format	H.264
Resolution	1920x1080 / 1280x720 / 640x360
Max. Framerate	H.264, 1920x1080 30FPS
Streaming Capability	Multiple Streaming (Up to 4 Profiles)
Audio I/O	Built-in Mic and Speaker
Audio Compression Format	G.711 u-law
Audio Communication	2-way audio / Half duplex
IP	IPv4
Protocol	TCP/IP, UDP/IP, RTP(UDP), RTP(TCP), RTSP, NTP, HTTP, HTTPS, SSL, DHCP, SMTP, ICMP, ARP, DNS, UPnP
Security	HTTPS(SSL) Login Authentication / Digest Login Authentication
Streaming Method	Unicast
Max. User Access	up to 5 users at unicast mode
<b>Environmental</b>	
Operating Temperature / Humidity	0°C - + 40°C(+32°F - +104°F) / 20% - 80% RH
Ingress Protection	Indoor
<b>Electrical</b>	
Input Voltage / Current	5V/2A
Power Consumption	micro-USB Type
<b>Mechanical</b>	
Color / Material	White / Plastic
Dimension (WxHxD)	Ø65mm x 36.5mm(without bracket)
Weight	137g

# SAMSUNG



# Watch What Matters Most



## Simple. Smart. Secure.



Home Care Baby Care Senior Care Business Pet Care

## SmartCam<sup>HD PLUS</sup> Samsung Home Monitoring Camera

- Small and simple design
- 1080p Full HD streaming and recording
- High capacity of storage(Max 128GB)
- 130° Ultra-Wide View Angle
- Wide Dynamic Range
- Improved Night Vision
- Lens Distortion Correction



reddot design award  
winner 2016

The Red Dot Design Award is recognized as one of the most known design competitors by the media and consumers alike.

**Always stay connected to your home and business**  
SmartCam cares for your loved ones while you are away.



**Night vision with IR LED**

Infrared LED allows you to monitor your home or business at night.  
- Identifies in low light conditions of 0Lux (IR LED)  
- Day & Night function available in pitch-black darkness  
- Switches automatically into B/W mode when it darkens less than 5Lux



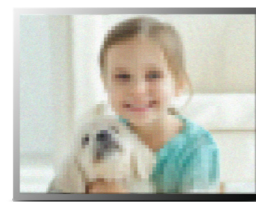
**Simple Wi-Fi Setup**

Setting up your home network takes only a matter of minutes - simply download the free SmartCam app for iOS or Android, available on your mobile device and follow the intuitive setup wizard guide.

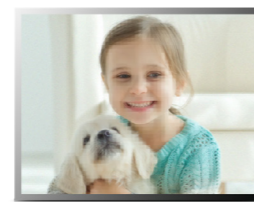


**1080p Full HD resolution**

There's no need to squint your eyes or lean in close with the SmartCam's 1080p Full HD Video. Whether you are checking if your children are playing nice in the playroom, SmartCam delivers a powerful viewing experience.



VGA (640 x 480)



720p (1280 x 720)



Full HD (1920x1080)

**130° Ultra Wide Angle of View**

While other cameras have constricted angles that limit your view, SmartCam allows you to see more than ever before. The 130° ultra-wide angle lens gives you a wider view to maximize your recording coverage without compromising quality.



**Motion zone select**

The Motion Detection feature is activated when you select an area, such as an entrance or a window.  
(A maximum of three areas can be selected)



**Event notification(MD/AD)**

Whenever motion and/or sound is detected, an alert message is sent to the mobile or web device

**Memory card storage(Max.128GB)**

**Continuous recording** : Record and save all video on a memory card.  
**Event recording** : Automatically records whenever event detection occurs.



**SDXC memory card**  
• Latest SDXC storage standard  
• Up to 128GB storage support

**Two-way talk**

The Two-way talk function allows you to stay connected with your child or pet at home.

