

## How It Works

---

It's as easy as 1,2,3! Follow the steps shown to purchase or order your product. If you need further advice speak to a Team Member at the Special Order Desk in-store.

---

### 1. Select The Product You Want

View the extensive range available in this brochure or online.

---

### 2. Order at the Special Orders Desk

After you have selected the product you want, take this brochure to the Special Orders Desk.

---

### 3. Collect your order

Upon placing your order, your product will arrive in 7-14 working days.

---

# Masterworks Gates



MASTERWORKS  
G A T E S

Available at  
**BUNNINGS**  
warehouse



9 347624 004191 >

**Take This Brochure** to the Special Orders Desk to place an order



MASTERWORKS  
G A T E S

Hand shaped  
by masters in  
steelworks

Inspired by  
traditional iron  
architecture

Delivered to you  
at non-traditional  
prices

A gate to last a  
lifetime



THE  
MASTERWORKS  
LIFETIME  
WARRANTY

Each of our gates is made from high quality black steel, shaped and welded by hand then hot dip galvanised in molten zinc to seal the entire structure and protect from corrosion.

The quality of this process allows us to offer a **lifetime warranty** on our gates.

*For further information on our Masterworks Lifetime Warranty visit [masterworksgates.com.au](http://masterworksgates.com.au)*

HIGH-END

WITHOUT

THE

PRICE TAG

Masterworks gates are designed to be **tough and secure** but **aesthetically pleasing** at the same time.

We pride ourselves on offering our customers a **quality**, hand-welded product at a **fraction of the price** of other high end gate brands.



MASTERWORKS  
G A T E S



EASY D.I.Y.

You don't need to be an expert to fit a Masterworks gate

Our gates are specifically designed to be easily installed by anyone

Your new Masterworks gate can be easily installed with only a few hours work

# KENSINGTON

---



MASTERWORKS  
G A T E S

## CLASSICAL STATELY DISTINCT

Inspired by the timeless designs from the revolutionary era of cast iron architecture, the Kensington gate features a classic spear-topped design with a modest ornate finish.

**LIFETIME WARRANTY**  
**DIY INSTALLATION**



# KENSINGTON

## BI PARTING DRIVEWAY GATE

**Colour:** Black

**Material:** Steel

**Finish:** Hot dip galvanised after welding with black powder coated finish

**Included:** 4 x Driveway Gate Hinge

**Recommended (sold separately):** 2 x Hinge Post #3 or #4, 2 x Drop Bolt, 1 x Gate Latch



Gate	Width	Height	Code
Kensington Bi Parting #1	3050 mm	1975 mm	0018832
Kensington Bi Parting #2	3650 mm	1975 mm	0018833
Kensington Bi Parting #3	4270 mm	1975 mm	0018834
Kensington Bi Parting #4	4885 mm	1975 mm	0018835
Kensington Bi Parting #5	5485 mm	1975 mm	0018836

## GARDEN GATE



**Colour:** Black

**Material:** Steel

**Finish:** Hot dip galvanised after welding with black powder coated finish

**Included:** 2 x Garden Gate Hinge, 1 x Gate Latch

**Recommended (sold separately):** 1 x Hinge Post #1 (Garden Gate #1) or #2 (Garden Gate #2)

Gate	Width	Height	Code
Kensington Garden Gate #1	915 mm	1290 mm	0018838
Kensington Garden Gate #2	1220 mm	1745 mm	0018837

# KENSINGTON

## FENCE & INFILL PANELS



**Colour:** Black

**Material:** Steel

**Finish:** Hot dip galvanised after welding with black powder coated finish

**Included:** 6 x Fence Bracket #1

**Recommended (sold separately):** 2 x Fence Post

Gate	Width	Height	Code
Kensington Infill Panel	600 mm	1670 mm	0018839
Kensington Full Panel	2300 mm	1670 mm	0018840

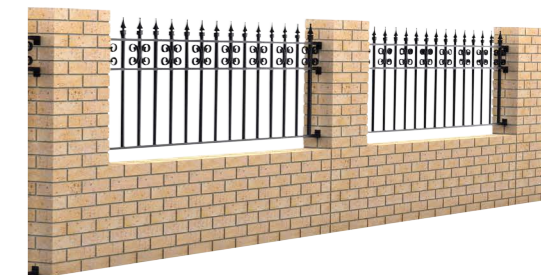
## HALF FENCE PANEL

**Colour:** Black

**Material:** Steel

**Finish:** Hot dip galvanised after welding with black powder coated finish

**Included:** 6 x Fence Bracket #1



Gate	Width	Height	Code
Kensington Half Panel	2300 mm	900 mm	0018841

# CAMDEN

---



MASTERWORKS  
G A T E S

## MODERN STRONG REFINED

Crafted using modern geometric forms, the Camden gate features an understated, contemporary design.

LIFETIME WARRANTY  
DIY INSTALLATION



# CAMDEN

## BI PARTING DRIVEWAY GATE

**Colour:** Black

**Material:** Steel

**Finish:** Hot dip galvanised after welding with black powder coated finish

**Included:** 4 x Driveway Gate Hinge

**Recommended (sold separately):** 2 x Hinge Post #3 or #4, 2 x Drop Bolt, 1 x Gate Latch



Gate	Width	Height	Code
Camden Bi Parting #1	3050 mm	1575 mm	0018852
Camden Bi Parting #2	3650 mm	1575 mm	0018853
Camden Bi Parting #3	4270 mm	1575 mm	0018854
Camden Bi Parting #4	4885 mm	1575 mm	0018855
Camden Bi Parting #5	5485 mm	1575 mm	0018856

## GARDEN GATE



**Colour:** Black

**Material:** Steel

**Finish:** Hot dip galvanised after welding with black powder coated finish

**Included:** 2 x Garden Gate Hinge, 1 x Gate Latch

**Recommended (sold separately):** 1 x Hinge Post #1 (Garden Gate #1) or #2 (Garden Gate #2)

Gate	Width	Height	Code
Camden Garden Gate #1	915 mm	1195 mm	0018858
Camden Garden Gate #2	1220 mm	1575 mm	0018857

# CAMDEN

## FENCE & INFILL PANELS



**Colour:** Black

**Material:** Steel

**Finish:** Hot dip galvanised after welding with black powder coated finish

**Included:** 6 x Fence Bracket #1

**Recommended (sold separately):** 2 x Fence Post

Gate	Width	Height	Code
Camden Infill Panel	600 mm	1575 mm	0018859
Camden Full Panel	2300 mm	1575 mm	0018860

## HALF FENCE PANEL

**Colour:** Black

**Material:** Steel

**Finish:** Hot dip galvanised after welding with black powder coated finish

**Included:** 6 x Fence Bracket #1



Gate	Width	Height	Code
Camden Half Panel	2300 mm	900 mm	0018861

# HADLEY

---



MASTERWORKS  
G A T E S

## GRACEFUL ROYAL DISTINCT

Created in the likeness of traditional wrought iron gates of the Victorian-era, the Hadley gate features a grand, imperial design with hand-shaped decorative scrollwork.

**LIFETIME WARRANTY**  
**DIY INSTALLATION**





## BI PARTING DRIVEWAY GATE

**Colour:** Black

**Material:** Steel

**Finish:** Hot dip galvanised after welding with black powder coated finish

**Included:** 4 x Driveway Gate Hinge

**Recommended (sold separately):** 2 x Hinge Post #3 or #4, 2 x Drop Bolt, 1 x Gate Latch



Gate	Width	Height	Code
Hadley Bi Parting #1	3050 mm	1975 mm	0018842
Hadley Bi Parting #2	3650 mm	1975 mm	0018843
Hadley Bi Parting #3	4270 mm	1975 mm	0018844
Hadley Bi Parting #4	4885 mm	1975 mm	0018845
Hadley Bi Parting #5	5485 mm	1975 mm	0018846

## GARDEN GATE



**Colour:** Black

**Material:** Steel

**Finish:** Hot dip galvanised after welding with black powder coated finish

**Included:** 2 x Garden Gate Hinge, 1 x Gate Latch

**Recommended (sold separately):** 1 x Hinge Post #1 (Garden Gate #1) or #2 (Garden Gate #2)

Gate	Width	Height	Code
Hadley Garden Gate #1	915 mm	1195 mm	0018848
Hadley Garden Gate #2	1220 mm	1745 mm	0018847

## FENCE & INFILL PANELS



**Colour:** Black

**Material:** Steel

**Finish:** Hot dip galvanised after welding with black powder coated finish

**Included:** 6 x Fence Bracket #1

**Recommended (sold separately):** 2 x Fence Post

Gate	Width	Height	Code
Hadley Infill Panel	600 mm	1575 mm	0018849
Hadley Full Panel	2300 mm	1575 mm	0018851

## HALF FENCE PANEL

**Colour:** Black

**Material:** Steel

**Finish:** Hot dip galvanised after welding with black powder coated finish

**Included:** 6 x Fence Bracket #1



Gate	Width	Height	Code
Hadley Half Panel	2300 mm	900 mm	0018850

# ACCESSORIES

## MANUAL OPERATOR KIT (COMPONENTS ALSO SOLD INDIVIDUALLY)

**Colour:** Black  
**Material:** Steel  
**Finish:** Powder coated



Accessory	Code
Manual Operator Kit	0018885
Gate Drop Bolt	0018878
Multi Purpose Gate Latch	0018886

## DRIVEWAY GATE HINGE

**Colour:** Black  
**Material:** Steel  
**Finish:** Powder coated



Accessory	Code
2 x Driveway Gate Bolt-on Hinge	0018876

## GARDEN GATE HINGE

**Colour:** Black  
**Material:** Steel  
**Finish:** Powder coated



Accessory	Code
2 x Garden Gate Bolt-on Hinge	0018877

## SPEAR TOP

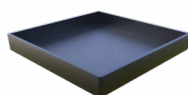
**Colour:** Black  
**Material:** Cast Aluminium  
**Finish:** Powder coated



Accessory	Post Size	Code
Spear Top	20 mm x 20 mm	0018870

## FLAT TOP

**Colour:** Black  
**Material:** Steel  
**Finish:** Powder coated



Accessory	Post Size	Code
Flat Top #1	60 mm x 60 mm	0018883
Flat Top #2	90 mm x 90 mm	0018882
Flat Top #3	125 mm x 125 mm	0018881

# ACCESSORIES

## BALL TOP

**Colour:** Black  
**Material:** Cast Aluminium  
**Finish:** Powder coated



Accessory	Post Size	Code
Ball Top #1	40 mm x 40 mm	0018872
Ball Top #2	60 mm x 60 mm	0018873
Ball Top #3	90 mm x 90 mm	0018874
Ball Top #4	125 mm x 125 mm	0018875

## HINGE POST

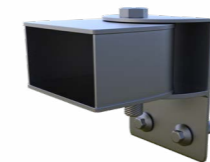
**Colour:** Black  
**Material:** Steel  
**Finish:** Hot dip galvanised after welding with black powder coated finish



Gate	Width	Depth	Height	Code
Hinge Post #1	60 mm	60 mm	1850 mm	0018869
Hinge Post #2	60 mm	60 mm	2300 mm	0018868
Hinge Post #3	90 mm	90 mm	2300 mm	0018867
Hinge Post #4	125 mm	125 mm	2300 mm	0018866

## FENCE BRACKET

**Colour:** Black  
**Material:** Steel  
**Finish:** Powder coated



Accessory	Rail Size	Code
Fence Bracket #1	40 mm x 20 mm	0018879
Fence Bracket #2	40 mm x 20 mm	0018880

## FENCE POST

**Colour:** Black  
**Material:** Steel  
**Finish:** Hot dip galvanised after welding with black powder coated finish



Gate	Width	Depth	Height	Code
Fence Post #1	60 mm	60 mm	1850 mm	0018865
Fence Post #2	60 mm	60 mm	2300 mm	0018864
Fence Post #3	90 mm	90 mm	2300 mm	0018863
Fence Post #4	125 mm	125 mm	2300 mm	0018862

# MEASURE & INSTALL

## HOW TO MEASURE YOUR MASTERWORKS GATE



## RECORD KEY MEASUREMENTS

Record your measurements below

## HOW TO MEASURE

It is important that you ensure that you have the correct measurements to help you select the right size gate for the installation area.

### Step 1 – Driveway Width Measurements

At the point where you will be installing your driveway gate, measure the total gap that you want your gate and posts (if required) to fill.

### Step 2 – Driveway Height Measurements

Measure the total height allowance of the area to ensure your gate will fit within the available space. If you are planning on hanging the gates from existing brickwork, post or walls measure the height of the brickwork to ensure there is enough room for your gate to hang at the correct height.

### Step 3 – Project Area

If you plan on installing more than just a driveway gate, e.g. infill panels and fencing, ensure you measure the width and maximum height of the total project area you wish to fill.

### Step 4 – Selecting a Gate

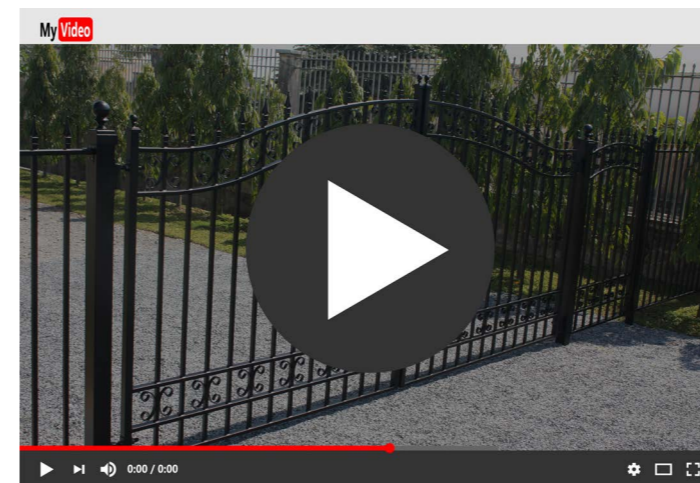
When selecting a gate or fence size, it is important to remember that we use a Gap Width measurement, which is the space BETWEEN the two hinge posts. For example, the Gap Width of Kensington #1 is 3050mm, however if you include 125mm hinge posts x 2, the total width of the gate and posts will be 3300mm and if you include 90mm posts x 2 the total width of the gate and posts will be 3230mm.

Our gap width measurement of 3050mm allows for the hinges and approx. 20mm gap between the two gate leaves.

## HOW TO INSTALL YOUR MASTERWORKS GATE

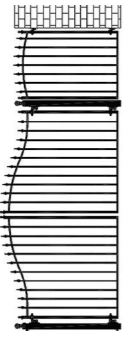


Visit the Masterworks Gates website to view our detailed installation videos.

[www.masterworksgates.com.au](http://www.masterworksgates.com.au)





# SPECIAL ORDERS FORM

**Step 1.** Please fill out and submit the below order form at a Bunnings Special Orders Desk.  
**Step 2.** A Masterworks Gates representative will contact you to confirm your measurements and order.

 <b>KENSINGTON</b>	 <b>HADLEY</b>	 <b>CAMDEN</b>
<b>Driveway Gate</b> <b>1#</b> QTY <input type="text"/> <b>2#</b> QTY <input type="text"/> <b>3#</b> QTY <input type="text"/> <b>4#</b> QTY <input type="text"/> <b>5#</b> QTY <input type="text"/>	<b>Driveway Gate</b> <b>1#</b> QTY <input type="text"/> <b>2#</b> QTY <input type="text"/> <b>3#</b> QTY <input type="text"/> <b>4#</b> QTY <input type="text"/> <b>5#</b> QTY <input type="text"/>	<b>Driveway Gate</b> <b>1#</b> QTY <input type="text"/> <b>2#</b> QTY <input type="text"/> <b>3#</b> QTY <input type="text"/> <b>4#</b> QTY <input type="text"/> <b>5#</b> QTY <input type="text"/>
<b>Garden Gate</b> <b>1#</b> QTY <input type="text"/> <b>2#</b> QTY <input type="text"/> <b>Infill</b> QTY <input type="text"/> <b>5#</b> QTY <input type="text"/>	<b>Garden Gate</b> <b>1#</b> QTY <input type="text"/> <b>2#</b> QTY <input type="text"/> <b>Infill</b> QTY <input type="text"/> <b>5#</b> QTY <input type="text"/>	<b>Garden Gate</b> <b>1#</b> QTY <input type="text"/> <b>2#</b> QTY <input type="text"/> <b>Infill</b> QTY <input type="text"/> <b>5#</b> QTY <input type="text"/>
<b>Fence Panels</b> <b>Full</b> QTY <input type="text"/> <b>Half</b> QTY <input type="text"/>	<b>Fence Panels</b> <b>Full</b> QTY <input type="text"/> <b>Half</b> QTY <input type="text"/>	<b>Fence Panels</b> <b>Full</b> QTY <input type="text"/> <b>Half</b> QTY <input type="text"/>

## POSTS & ACCESSORIES

<b>Fence Post</b> <b>1#</b> QTY <input type="text"/> <b>2#</b> QTY <input type="text"/> <b>3#</b> QTY <input type="text"/> <b>4#</b> QTY <input type="text"/> <b>5#</b> QTY <input type="text"/>	<b>Hinge Post</b> <b>1#</b> QTY <input type="text"/> <b>2#</b> QTY <input type="text"/> <b>3#</b> QTY <input type="text"/> <b>4#</b> QTY <input type="text"/> <b>5#</b> QTY <input type="text"/>	<b>Ball Top</b> <b>1#</b> QTY <input type="text"/> <b>2#</b> QTY <input type="text"/> <b>3#</b> QTY <input type="text"/> <b>4#</b> QTY <input type="text"/> <b>5#</b> QTY <input type="text"/>	<b>Flat Top</b> <b>1#</b> QTY <input type="text"/> <b>2#</b> QTY <input type="text"/> <b>3#</b> QTY <input type="text"/> <b>5#</b> QTY <input type="text"/>	<b>Spear Top</b> <b>1#</b> QTY <input type="text"/> <b>2#</b> QTY <input type="text"/> <b>3#</b> QTY <input type="text"/> <b>5#</b> QTY <input type="text"/>	<b>2x Garden Hinges</b> <b>1#</b> QTY <input type="text"/> <b>2#</b> QTY <input type="text"/> <b>5#</b> QTY <input type="text"/>	<b>2x Driveway Hinges</b> <b>1#</b> QTY <input type="text"/> <b>2#</b> QTY <input type="text"/> <b>5#</b> QTY <input type="text"/>	<b>Fence Bracket</b> <b>1#</b> QTY <input type="text"/> <b>2#</b> QTY <input type="text"/> <b>5#</b> QTY <input type="text"/>	<b>Manual Operator Kit</b> <b>Full Kit</b> QTY <input type="text"/> <b>Drop Bolt</b> QTY <input type="text"/> <b>Gate Latch</b> QTY <input type="text"/>
--	--	--	---	--	--	--	---	---

**CONTACT**  
 masterworksgates.com.au  
 1300 911 914  
 info@masterworksgates.com.au

# NOTES