

EUROMATIC

KITCHEN AND HOUSEHOLD



360° Micathermic Heater INSTRUCTION MANUAL

MODEL: CH-2000E-1

AFTER SALES SUPPORT
(AU) 1300 886 649 (NZ) 0800 836 761



Contents

General Safety Instructions	3
Product Overview	6
Getting Started	7
Operating Instructions	8
Other Useful Information	10

General Safety Instructions

Read this manual thoroughly before first use, even if you are familiar with this type of product. The safety precautions enclosed herein reduce the risk of fire, electric shock and injury when correctly adhered to. Make sure you understand all instructions and warnings. **Keep the manual in a safe place for future reference**, along with any warranty information, your purchase receipt and the original carton. If you sell or transfer ownership of this product, pass on these instructions to the new owner.

Always follow basic safety precautions and accident prevention measures when using an electrical appliance, including the following:

Electrical Safety and Cord Handling

- **Voltage:** Before plugging in the heater, make sure your outlet voltage and frequency correspond to the voltage stated on the appliance rating label.
- **Electrical circuit:** To prevent overloading a circuit, do not plug the heater into a circuit that already has other appliances working.
- **No adaptor, no extension cord:** Do not use the heater with a power board or double adaptor as this may overheat and create a fire risk. Do not use it with an extension cord because the cord may overheat and cause a risk of fire.
- **WARNING: To reduce the risk of fire, electric shock or injury:**
 - Never touch the heater with wet or damp hands or feet.
 - Do not use the heater if any part of it has become wet. Immediately call a qualified service technician to inspect the heater and replace any part of the electrical system that has been wet.
 - Never spill liquid into the heater; never immerse the cord, plug or any part of the appliance in water or any other liquid. Do not reach for an appliance that has fallen into water. Switch off and unplug immediately.
- **Damage:** Do not operate the heater with a damaged cord or plug, or after the heater malfunctions or has been dropped or damaged. If the supply cord is damaged, it must be replaced by the manufacturer or an authorised service agent in order to avoid a hazard. Contact our after sales support line to arrange an examination and/or repair.
- **Plug:** It is normal for the plug to feel warm to the touch; however, a loose fit between the AC outlet and plug may cause overheating and distortion of the plug. Contact a qualified electrician to replace a loose or worn outlet.
- **Protect the power cord:**
 - Do not twist or kink the cord or let it touch heated surfaces.
 - Do not put any stress on the cord where it connects to the product.
 - Arrange the cord away from any traffic area so no one will trip over it.
 - Do not run the cord under carpeting; do not cover it with rugs, runners etc.
 - Only operate the heater with the power cord fully unwound. Using it with the cord coiled up could cause overheating and present a hazard.

General Safety Instructions (Cont.)

- **Disconnect:** Always disconnect power when the heater is not in use and before cleaning, servicing or moving the heater. To disconnect it, switch it off and unplug it. When disconnecting, grip the plug, do not pull on the cord.
- **Safety switch:** Unless your home is already fitted with a residual current device (safety switch), we recommend installing an RCD with a rated residual operating current not exceeding 30mA to provide additional safety protection when using electrical appliances. See your electrician for professional advice.

Usage Conditions and Restrictions

- **Indoor domestic use only:** This appliance is intended for light domestic use only. It is not suitable for heavy duty commercial or trade use. Do not use it outdoors, on wet surfaces or near a swimming pool. Do not use it at altitudes exceeding 2000m.
- **WARNING: Space heating only!** Do not use this appliance for anything other than its intended purpose, and only use it as described in this manual. Any other use is not recommended and may cause fire, electric shock or injury.
- **No clothes drying:** Do not use this appliance as a drying rack for clothing.
- **Accessories:** The use of accessory attachments not recommended by the appliance distributor may result in fire, electric shock or personal injury.
- **Ventilation:** Only use this heater in a well ventilated area.
- **Keep openings clear:** To prevent a possible fire, do not insert or allow objects to enter any ventilation or exhaust openings. Keep airflow grilles free of dust and hair build-up, especially if you have indoor pets. Do not block air intakes or exhaust openings in any manner.
- **WARNING: No external timer!** Never operate the heater on a program switch, separate timer switch or any other appliance for automatic operation, as there is a risk of fire if the heater is covered or positioned incorrectly. In order to avoid a hazard due to inadvertent resetting of the thermal cut-out, do not connect it to a circuit that is regularly switched on and off by the utility.
- **WARNING: Protect from water:** Do not use this heater in the immediate surroundings of a bath, shower or swimming pool. Never locate this appliance where it may fall into a bathtub or otherwise become immersed in water. Never place containers filled with liquid, such as drink glasses or vases, on top of the heater.
- **Unattended:** Do not leave the appliance unattended while it is in use. The presence of odour is almost always an indication of damage. If you notice any such odour, unplug the mains plug immediately and have the heater inspected.

General Safety Instructions (Cont.)

- **Usage restriction:** This appliance is not intended for use by persons (including children) with reduced physical, sensory or mental capabilities, or lack of experience and knowledge, unless they have been given supervision or instruction concerning use of the appliance by a person responsible for their safety.
- **Children:** Supervise children to ensure they do not play with the heater. Close supervision is necessary when any appliance is used by or near children.
- **CAUTION: Hot!** Some parts of this heater can become very hot during use and remain hot for some time afterwards. To avoid burns, do not let bare skin touch hot surfaces. Be particularly careful when children and vulnerable persons are present. Always let the heater cool down before touching it, even if it is unplugged from the power supply.
- **To ensure personal safety, do NOT install or use this heater:**
 - In front of or immediately below a power point, as the heat it generates could damage the electrical installation.
 - Close to a radiant heat source.
 - Behind a door.
 - On long pile carpet or a flokati rug.
 - Near a window where it may get splashed with rain.
 - Near flammable materials or surfaces (such as furniture, curtains, pillows, bedding, papers, clothes), or near open flames. Keep flammable materials at least 1m away from the front, sides and rear of the heater.
 - In an area where petrol, paint or other flammable liquids are stored, e.g. a garage or workshop, as the heater has hot and arcing parts inside which may spark.
- **Service:** This heater contains no user-serviceable parts inside. Do not attempt to open and repair the heater yourself. Other components should only be serviced by a qualified technician. All covers are intended to prevent direct access to the heating elements and must be in place when the appliance is in use.
- **Malfunction:** In case of malfunction, disconnect the plug immediately and contact our after sales support line for advice.
- **Storage:** To avoid damaging the heater during storage or transport, keep the heater in a dry place, free from excessive vibration.
- **Improper use:** Improper use or installation may result in the risk of fire, electric shock and/or injury. We assume no liability for any eventual damages caused by improper use or incorrect handling.



DANGER: Do not cover! This symbol warns you never to cover the heater in any manner as it may overheat and become a fire risk.

Product Overview



Parts of the Heater

- 1 Carry Handle
- 2 Safety Grille (covering the heating element)
- 3 Control Panel
- 4 ON/OFF Switch [I / O]
- 5 Non-Slip Feet (5)

Remote and Control Panel Buttons and Indicators

- 6 Digital LC Display
- 7 UP [+] Button
- 8 MODE Button
- 9 POWER [⏻] Button
- 10 DOWN [-] Button
- 11 TIMER Button
- 12 IR Sensor

NOTE:

Due to continued product improvement, images and illustrations in this manual may vary slightly from the product purchased. All images in this manual are for reference purposes only. Parts are not necessarily pictured to scale.

Getting Started

Unpacking

- **Carton:** This product has been packaged to protect it against transportation damage. Unpack the appliance and keep the original packaging carton and materials in a safe place. It will help prevent any damage if the product needs to be transported in the future, and you can use it to store the appliance when it is not in use. In the event the carton is to be disposed of, please recycle all packaging materials where possible.
- **Plastic wrapping** can be a suffocation hazard for babies and young children, so ensure all packaging materials are out of their reach and disposed of safely.
- **Cord:** Inspect the power supply cord and plug, and all other parts of the appliance, for visual damage. Do not use the appliance if anything appears to be damaged or not working properly. **In case of damage, contact our after sales support centre using the details at the bottom of the page.**
- **Documentation:** Make sure you have read and understood all instructions and warnings in this manual. Refer to the Product Overview, opposite, to familiarise yourself with the product and identify all parts. Pay particular attention to the safety instructions on the previous pages.
- **Assembly:** Your new 360° Micathermic Heater comes fully assembled. It must be used freestanding, in the upright position.
- **Remote control:** The heater comes with a remote control powered by a 3V lithium button cell (CR2032), which is contained inside the remote control. See page 12 for how to replace the battery when it needs replacing.



DANGER if swallowed

WARNING!

Keep batteries out of reach of children. Swallowing may lead to serious injury or death in as little as 2 hours due to internal burns.

If swallowed, go straight to a hospital emergency room.

Dispose of used batteries immediately.

After Sales Support

☎ (AU) 1300 886 649 (NZ) 0800 836 761 | ✉ info@tempo.org

Operating Instructions

Using the Heater


- Your new 360° Micathermic Heater can be operated using the control panel at the front of the unit, or via the supplied remote control. Just point the remote at the IR sensor on the control panel and press the relevant button.

Location






- Place the heater in an upright position on a firm, level, dry, non-flammable and heat-resistant floor surface, taking into considering all relevant safety information on the previous pages.
- The appliance is for floor-standing use only. Ensure that there is sufficient distance from any walls, fixtures and other appliances. The distance around the appliance must be at least 50cm at all sides to exclude the risk of fire.




When turning your heater on for the first time it is normal for the heater to emit a 'new heater' smell, which will quickly pass. This is no cause for concern. Ensure good ventilation.

Connection and Switching On

- Make sure the ON/OFF switch at the front of the appliance is in the OFF [O] position, then plug the heater into an appropriate, properly earthed wall socket and switch on power to the outlet.
- Always use a separate socket that has no other high wattage appliances connected at the same time – do not plug it into a power board or socket adaptor; do not use an extension cord. Also ensure that the socket is easily accessible so that the cord can readily be disconnected in an emergency.
- Once the plug is securely inserted, set the ON/OFF switch at the front of the appliance to the ON [I] position. The switch will illuminate and the heater will enter standby mode.
- Upon connection, all indicators on the LC display will light briefly and then extinguish. The current equipment temperature will remain displayed and the timer [00:00] display will be flashing.
- Press the POWER  button to switch on the heater.

Mode Selection

The heater can be run in four modes: Low  heat output, High  heat output and fan , Frost protection mode, Low  heat output and fan .

- Upon pressing the POWER  button, the heater will start with low heat output and fan operation. The LCD will display the current equipment temperature and the fan  and low  heat output icons will be lit.

After Sales Support

 (AU) 1300 886 649 (NZ) 0800 836 761 |  info@tempo.org

Operating Instructions (Cont.)

- Press the MODE button, repeatedly, to select the desired heating function in the following sequence: Low (☀️) heat output --> High (☀️) heat output and fan --> Frost protection mode --> Low (☀️) heat output and fan --> Low heat output, etc.

Temperature Selection

The appliance can be set to heat the room to a certain temperature within the 5°C–38°C range.

- Press the UP [+] or DOWN [-] buttons to set the desired temperature in one degree steps. The temperature on the display will go to the maximum temperature that can be set (38°C), then use the DOWN [-] button to set the desired temperature.
NOTE: For the appliance to heat, the set temperature must be set higher than the indicated equipment temperature.
- When the room temperature rises to more than 2°C above the set temperature, the heater will switch off. It will come on again when the temperature has dropped.
- In Frost protection mode the temperature is set to a default setting of 7°C and cannot be adjusted.

Timer Setting

The heater is equipped with a 24-hour timer which you can set to switch the heater on or off at a set time. The time that can be set ranges from 1 min. to 23h 59min. You should set the timer after you have set the desired heating mode and temperature. It is also possible to set both the switch-on and switch-off time.

- Press the TIMER button and select the timer function in the following sequence: Switch-on time hour --> Switch-on time minute --> Switch-off time hour --> Switch-off time minute --> Continuous operation
- While the Switch-On / Switch-Off time is flashing on the display, set the hours / minutes by pressing the UP / DOWN [+ / -] buttons.
- When the Switch-Off time has elapsed, END is shown on the display and the heater switches off.

Turning Off

- Press the POWER ⏻ button to turn off the heater.
- Press the ON/OFF [I / O] button to disconnect it from the power supply.
- When the heater is not going to be used for a while, unplug it from the mains.

Other Useful Information

Overheat Protection and Prevention

This heater is equipped with an automatic thermal cut-off (overheat protection), which switches the heater off automatically in the event of abnormal overheating. While this feature provides additional safety in case of overheating, first and foremost you should make sure to eliminate all potential reasons that can lead to overheating and create a fire risk.

IMPORTANT!

- A common cause of overheating is deposits of dust and fluff entering the heater. Ensure these deposits are removed regularly by unplugging the heater, allowing it to cool and cleaning it as described on the next page.
- Also make sure that the appliance can sufficiently dissipate the heat generated. This is particularly important in case the overheat protection has been triggered. Ensure there is sufficient room all around the heater, and nothing is covering or obstructing the air outlet or intake.

If the overheat protection has been triggered, switch off the heater, unplug it from the electrical socket and let the appliance cool for about 30 minutes. Eliminate the cause of the overheating (for example, excessive dust in the appliance, or the air outlet is covered) and start it up again. If after eliminating the cause you still cannot switch the heater back on, or if the overheating protection circuit switches on without an apparent reason, contact our after sales support centre for advice.

Tilt Protection (Tip-Over Safety Switch)

This heater is equipped with a tip-over safety switch, which switches off the heater in the event that it is knocked over or tilted to a position where safe operation is in jeopardy. Once the heater is restored an upright position, the heater will reset.

Other Useful Information (Cont.)

CAUTION!

- Always switch off and disconnect the appliance from the power supply before attempting any maintenance or cleaning the heater.
- Do not attempt to open the heater and repair it yourself. Any repairs must be carried out by a qualified technician.

Troubleshooting

If your heater fails to operate, or you experience any other problem with the appliance, contact our after sales line for advice or to arrange a service. But before phoning for a service, please ensure that the heater is properly plugged in and the outlet and circuit breaker or fuse are working properly.

Cleaning and Maintenance

- Before cleaning your heater, switch it off and allow it to cool. Disconnect the electricity supply to the appliance.
- If the outside of the heater needs cleaning, wipe it with a soft, damp cloth and then wipe it dry with a dry cloth. Allow some time for the heater to dry thoroughly before reconnecting it to the power supply.
- **Do not use abrasive cleaning powders or furniture polish, as this can damage the surface finish.**
- **CAUTION: Never immerse the cord, plug or heater in water or other liquid for cleaning. Do not allow water to enter the interior of the heater.**
- Dust from around the grilles can often be removed by using a vacuum cleaner with a soft brush attachment.

Storage

- If you are not going to use the heater for an extended period of time, please unplug it at the power point.
- Clean the appliance as described above, then store it in its original carton to protect it from dust. Store it in a cool and dry place, out of children's reach.

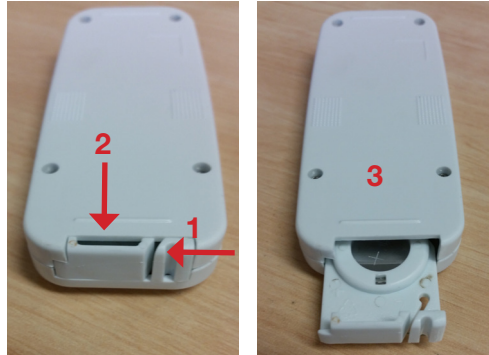
Other Useful Information (Cont.)

Battery Replacement

If the battery in the remote control is flat, insert a new 3V CR2032 size button cell following the instructions below.

Push the locking tab to one side (1) and pull out the battery compartment (2) at the back side of remote control.

Remove the old battery from the remote control and insert a new one of the same type, observing the polarity (3). Insert the battery compartment cover back into the remote control.



Battery Precautions

- Do not open the batteries or short-circuit them.
- Do not mix different types of batteries. Due to increased risk of leakage, empty batteries should be removed. The batteries should also be removed from the remote control if it is not being used for long periods.
- Only dispose of batteries when they are fully discharged.
- **WARNING: Danger of explosion!** To prevent a risk of explosion, batteries must not be charged, heated or disposed of by burning. Never throw batteries into a fire or subject batteries to high temperatures.
- Used batteries should not be disposed of in household waste. Dispose of them in accordance with statutory regulations.



DANGER if swallowed

WARNING!

Keep batteries out of reach of children. Swallowing may lead to serious injury or death in as little as 2 hours due to internal burns. If swallowed, go straight to a hospital emergency room. Dispose of used batteries immediately.

Other Useful Information (Cont.)

Servicing

- If your heater requires servicing, please contact our after sales support centre using the details at the bottom of the page.
- If the power cord is damaged and needs replacing, it must be replaced by a service agent or equivalent qualified person in order to prevent a hazard.

CAUTION!

Do not attempt to open the heater and repair it yourself. Any repairs must be carried out by a qualified technician.

Technical Specifications

Model No	CH-2000E-1
Rated Power	2000W
Rated Voltage	230-240V ~ 50Hz
Ingress Protection	IP21 -- protected against ingress of solid objects up to 12mm (e.g., fingers), and against vertically falling drops of water, e.g. condensation
Dimensions (approx.)	565 (H) x 280 (W) x 290 (D) mm
Weight (approx.)	approx. 3.9kg



CLASS II - DOUBLE INSULATED APPLIANCE

This symbol indicates that the appliance has been designed in such a way that it does not require a safety connection to electrical earth (ground).

Compliance

This appliance has been fully tested and meets all requirements as set out by standards AS/NZS 60335.1 and AS/NZS 60335.2.30.

Other Useful Information (Cont.)

Responsible Disposal

At the end of its working life, do not throw this appliance out with your household rubbish. Electrical and electronic products contain substances that can have a detrimental effect on the environment and human health if disposed of inappropriately. Observe any local regulations regarding the disposal of electrical consumer goods and dispose of it appropriately for recycling. Contact your local authorities for advice on recycling facilities in your area.

This page has been left blank intentionally.

Warranty returns

Should you for any reason need to return this product for a warranty claim, make sure to include all accessories with the product.

Product does not work?

If you encounter problems with this product, or if it fails to perform to your expectations, make sure to contact our After Sales Support Centre on (AU) 1300 886 649 or (NZ) 0800 836 761 before returning it to the store for a refund.

Distributed by Tempo (Aust) Pty Ltd ABN 70 106 100 252

PO BOX 6056 Frenchs Forest, Australia NSW 2086

Customer Helpline:

(AU) 1300 886 649 (NZ) 0800 836 761

Email: info@tempo.org

V1.0

After Sales Support

☎ (AU) 1300 886 649 (NZ) 0800 836 761 | ✉ info@tempo.org