

RYOBI®

RC2540

ORIGINAL INSTRUCTIONS

Petrol Cultivator



Important!

It is essential that you read the instructions in this manual before assembling, operating, and maintaining the product.

Subject to technical modification.

Safety, performance, and dependability have been given top priority in the design of your petrol cultivator

INTENDED USE

The product is only intended for use outdoors by a standing operator walking with the product. For safety reasons, the product must be adequately controlled by using two-handed operation at all times.

The product is designed for cultivating or loosening soil in an open domestic garden area. The maximum working depth of the product is 19.68 cm.

The product should never be operated with the wheels off the ground. It should not be ridden on. The product should only be used as described in this manual and should not be used for any other purpose.

WARNING

When using the product, the safety rules must be followed. For your own safety and that of bystanders, please read these instructions before operating the product. Please keep the instructions safe for later use.

GENERAL SAFETY WARNINGS

WARNING

Read all safety warnings and all instructions. Failure to follow the warnings and instructions may result in electric shock, fire and/or serious injury.

Save all warnings and instructions for future reference.

TRAINING

- Read, understand, and follow all instructions on the machine and in the manual(s) before starting. Be thoroughly familiar with the controls and the proper use of the equipment. Know how to stop the machine and disengage the controls quickly.
- Never allow children to operate the equipment. Never allow adults to operate the equipment without proper instruction.
- Keep the area of operation clear of all persons, particularly small children, and pets.

PREPARATION

- Thoroughly inspect the area where the equipment is to be used and remove all foreign objects.
- Disengage all clutches and shift into neutral before starting the engine (motor).
- Do not operate in shorts or open toed shoes. Wear proper Personal Protective Equipment (PPE) at all times, such as gloves, proper footwear, and eye protection.
- Safe handling of gasoline:
 - Extinguish all cigarettes, cigars, pipes, and other sources of ignition.
 - Use only an approved gasoline container.
 - Never remove gas cap or add fuel with the engine running.
 - Allow engine to cool before refueling.
 - Never refuel the machine indoors.
 - Never store the machine or fuel container where there is an open flame, spark, or pilot light such as

on a water heater or on other appliances.

- Never fill containers inside a vehicle or on a truck or trailer bed with a plastic liner. Always place containers on the ground away from your vehicle before filling.
- Remove gas powered equipment from the truck or trailer and refuel it on the ground. If this is not possible, then refuel such equipment with a portable container, rather than from a gasoline dispenser nozzle.
- Keep the nozzle in contact with the rim of the fuel tank or container opening at all times until fueling is complete. Do not use a nozzle lock open device.
- If fuel is spilled on clothing, change clothing immediately.
- Never overfill fuel tank. Replace gas cap and tighten securely.
- If fuel is spilled, do not attempt to start the engine but move the machine away from the area of spillage and avoid creating any source of ignition until fuel vapors have dissipated.
- Use extension cords and receptacles as specified by the manufacturer for all machines with electric drive motors or electric starting motors.
- Never attempt to make any adjustments while the engine (motor) is running (except where specifically recommended by the manufacturer).

OPERATION

- Do not allow hands, feet, or other body parts or clothing near the rotating tines or any other moving part. The tines begin to rotate once the engine/motor is started and the activating device is engaged. The tines may momentarily rotate after the activating device is released.
- Exercise extreme caution when crossing gravel surfaces. Stay alert for hidden hazards or traffic.
- After striking a foreign object, stop the engine (motor), remove the wire from the spark plug (or disconnect the cord for electric products), thoroughly inspect the machine for any damage, and repair the damage before restarting and operating the machine.
- Exercise caution to avoid slipping or falling.
- If the machine should start to vibrate abnormally, stop the engine (motor) and check immediately for the cause. Vibration is generally a warning sign of trouble.
- Stop the engine (motor) when leaving the operating position, before unclogging the tines, and when making any repairs, adjustments, and inspections.
- Stop the engine (motor) when leaving the machine unattended.
- Before cleaning, repairing, or inspecting, shut off the engine and make certain all moving parts have stopped. Disconnect the spark plug wire, and keep the wire away from the plug to prevent accidental starting. Disconnect the cord on electric motors.
- Do not operate the engine in a confined space where dangerous carbon monoxide fumes can collect.
- Never operate the machine without proper shields and guards or other safety protective devices in place.
- Do not overload the machine capacity by attempting to till or cultivate too deep at too fast a rate.
- Never operate the machine at high transport speeds on hard or slippery surfaces.
- Never allow bystanders near the machine, especially small children.



- Use only attachments and accessories approved by the manufacturer of the machine (such as wheel weights, counterweights, and the like).
- Never operate the tiller without good visibility or light.
- Be careful when tilling in hard ground. The tines may catch in the ground and propel the tiller forward. If this occurs, let go of the handlebars and do not restrain the machine.
- Use extreme caution when reversing or pulling the machine towards you. To avoid getting pinned against a structure, ensure adequate distance before reversing near a wall or fence. For machines with powered reverse drive capability, familiarize yourself with the operation of the Emergency Stop Control. It provides a secondary means of stopping power to the tines and wheel drive in an emergency.
- Do not change the engine governor settings or over speed the engine.
- Start the engine or switch on the motor carefully according to instructions and with feet away from the tines.
- Never pick up or carry a machine while the engine (motor) is running.
- Do not operate the tiller while under the influence of alcohol or drugs.
- Powered walk-behind tiller work is strenuous. You must be in good physical condition and mentally alert. If you have any condition that might be aggravated by strenuous work, check with your doctor before operating a powered walk-behind tiller.

MAINTENANCE AND STORAGE

- Keep machine, attachments, and accessories in safe working condition.
- Check shear bolts, engine mounting bolts, and other bolts at frequent intervals for proper tightness to be sure the equipment is in safe working condition.
- Never store the machine with fuel in the fuel tank inside a building where ignition sources are present, such as hot water and space heaters, clothes dryers, and the like. Allow the engine to cool before storing in any enclosure.
- Always refer to the operator's manual for important details if the tiller is to be stored for an extended period.
- If the fuel tank has to be drained, do this outdoors.
- Follow manufacturer's recommendations for safe loading, unloading, transport, and storage of machine.

CULTIVATOR SAFETY WARNINGS

- Wear a face filter in dusty conditions to reduce the risk of injury associated with the inhalation of dust.
- Never pick up or carry the product while the motor is running.
- Do not operate the product near underground electric cables, telephone lines, pipes, or hoses.
- Use the product only in daylight or good artificial light.
- Do not walk backwards when using the product.
- Do not use the product near drop-offs, ditches, excessively steep slopes, or embankments. Poor footing could cause a slip-and-fall accident.
- Exercise extreme caution when working on difficult soil. If the soil is very hard, water a few days before cultivation.
- Avoid working the soil when soggy or wet. Wait a day or two after heavy rain for the ground to dry.

- Keep hands and feet away from the rotating tines at all times and especially when switching on the motor.
- Beware of objects thrown by the rotating tines. Clear debris like small stones, gravel, and other foreign objects from the work area before starting operation. Wires or string may become entangled with the rotating tines.
- Beware, the tines continue to rotate after the motor is switched off.
- Always ensure that ventilation openings are kept clear of debris.
- Make sure that all the protective devices are fitted and in good condition.
- Do not modify the product in any way as this may increase the risk of injury to yourself or others.

CAUTION

The product may bounce upward and/or jump forward if the tines strike extremely hard packed soil, frozen ground, or buried obstacles such as large stones, roots, and stumps.

CAUTION

Before moving the product from one area to another, switch off the motor, and wait for the tines to come to a complete stop. Be careful not to let the tines touch the ground while moving the product. The tines, as well as the product itself, may be damaged even if the motor is switched off.

OPERATING TIPS

- To reduce the risk of injury from contact with the moving parts or from thrown objects, the operator must stand behind the handlebar. Never stand to the side or forward of the handlebars while the product is in operation.
- Always wear eye protection. Always wear non-slip safety footwear when operating the product.
- While the product will cut and help clear underground vegetation and roots, the tines could become tangled in heavy vegetation or stubble above ground. Clear the area to be cultivated with a brushcutter or other similar means and prepare the ground by removing any large debris, such as stones, bricks, and metal poles from the surface.
- Keeping hands and feet away from the tines, start the motor with the tines slightly above the ground surface by pressing the switch lock followed by the on/off switch. While securely holding the handlebars, lower the tines onto the ground. The product may try to pull itself forward at this point depending upon the hardness of the ground. Resist the pull of the product to go forward, and the tines should start to bury themselves into the ground. If they do not, use a reverse-and-forward (about 20 cm is sufficient) or a slight rocking-up-and-down motion of the handlebar to assist the tines to get to their working depth.
- You may alter the depth in the ground of the tines by moving the wheels closer to or further from the tines. Once the tines are in the ground to the depth required, slowly move the product forward, letting the motor do the work. If the tines strike some object too hard to move or cut, the product may raise its height as the tines try to pass over the obstruction. Stop the product and allow



the tines to cease all movement before attempting to investigate or remove the obstruction.

- If the ground to be cultivated is hard or dry, it is better to water the ground, but do not soak it completely and allow time for the water to penetrate the ground and for the excess to drain away before attempting to cultivate.

TRANSPORTATION AND STORAGE

- Stop the product and make sure that all moving parts have come to a complete stop. Allow the product to cool down before storing or transporting.
- Clean all foreign materials from the product. Store the product in a cool, dry, and well-ventilated place that is inaccessible to children. Keep away from corrosive agents such as garden chemicals and de-icing salts. Do not store outdoors.
- Wipe the tines with oil or spray them with silicone lubricant to prevent rusting. Beware of sharp or damaged edges on tines.
- Oil all visible moving parts. Do not remove the motor cover.
- For transportation in a vehicle, secure the product against movement or falling to prevent injury to persons or damage to the product.

MAINTENANCE

WARNING

Use only original manufacturer's replacement parts, accessories and attachments. Failure to do so can cause possible injury, poor performance, and may void your warranty.

WARNING

Servicing requires extreme care and knowledge and should be performed only by a qualified service technician. For service, we suggest you take the product to the nearest authorised service centre. When servicing, use only identical replacement parts.

WARNING

Do not at any time let brake fluids, gasoline, petroleum-based products, or penetrating oils come in contact with plastic parts. They contain chemicals that can damage, weaken, or destroy plastic.

WARNING

The tines are sharp. Use caution and wear heavy-duty gloves when fitting, replacing, cleaning, or checking bolt security.

- Switch off and make sure all moving parts have come to a complete stop before conducting any maintenance or cleaning work.
- Check all nuts, bolts, and screws at frequent intervals for proper tightness to ensure the product is in safe working condition.
- Never store the product with petrol in the tank inside a building where fumes may reach an open flame or spark.

- Allow engine to cool before storing in any enclosure.
- To reduce the fire hazard, keep the engine, silencer, battery compartment or petrol storage area free of grass, leaves or excessive grease.
- Replace worn or damaged parts for safety.
- You may only make adjustments or repairs described in this manual. For other repairs, contact the authorised service centre.
- If the fuel tank has to be drained, do this outdoors.
- Avoid using solvents when cleaning plastic parts. Most plastics are susceptible to damage from various types of commercial solvents and may be damaged by their use. Use clean cloths to remove dirt, dust, oil, or grease.
- After each use, clean the body and handles of the product with a soft, dry cloth, and clean the debris from the tines with a stiff brush.
- Only the parts shown on the replacement part list are intended to be repaired or replaced by the customer.

RESIDUAL RISKS

Even when the product is used as prescribed, it is still impossible to completely eliminate certain residual risk factors. The following hazards may arise in use and the operator should pay special attention to avoid the following:

- Injury caused by vibration
 - Always use the right tool for the job. Use designated handles and restrict working time and exposure.
- Injury caused by noise
 - Exposure to noise can cause hearing injury. Wear ear protection and limit exposure.
- Injury from contact with the tines
- Injury caused by thrown objects.

RISK REDUCTION

It has been reported that vibrations from handheld tools may contribute to a condition called Raynaud's Syndrome. Symptoms may include tingling, numbness and blanching of the fingers, usually apparent upon exposure to cold. Hereditary factors, exposure to cold and dampness, diet, smoking, and work practices are all thought to contribute to the development of these symptoms. There are measures that can be taken by the operator to possibly reduce the effects of vibration:

- Keep your body warm in cold weather. When operating the unit, wear gloves to keep the hands and wrists warm. It is reported that cold weather is a major factor contributing to Raynaud's Syndrome.
- After each period of operation, exercise to increase blood circulation.
- Take frequent work breaks. Limit the amount of exposure per day.

If you experience any of the symptoms of this condition, immediately discontinue use and see your physician.

WARNING

Injuries may be caused, or aggravated, by prolonged use of a tool. When using any tool for prolonged periods, take regular breaks.

WHAT'S IN THE BOX

- Cultivator attachment x1
- Petrol powerhead x1
- Handle x1

- Lubricant x1
- Wrench x2
- Felt washer x2
- Hitch pin x2
- Tiller shield guard x1
- Bolt x4
- Nut x4
- Outer tine A x1
- Inner tine B x1
- Inner tine C x1
- Outer tine D x1
- Harness x1
- Operator's manual x1

SYMBOLS ON THE PRODUCT



Safety alert



Read and understand all instructions before operating the product, follow all warnings and safety instructions.



Beware of thrown or flying objects. Keep all bystanders, especially children and pets, at least 15 m away from the operating area.



Keep feet and hands away from rotating tines.



Wear ear protection.



Wear eye protection.



Do not expose to rain or damp condition.



The product is not intended for use with a toothed saw type blade.



Warning! Hot surface.



Primer bulb.



"FULL" choke position.



"HALF" choke position.



"RUN" position.



Allow the engine to run for 10 seconds.



Pull the starter grip until the engine starts.



Squeeze trigger.



Press the primer bulb 10 times.



Guaranteed sound pressure level.



Waste electrical products should not be disposed of with household waste. Please recycle where facilities exist. Check with your local authority or retailer for recycling advice.



Regulatory Compliance Mark (RCM). Product meets applicable regulatory requirements.

SYMBOLS IN THIS MANUAL



Parts or accessories sold separately



Note



Warning

The following signal words and meanings are intended to explain the levels of risk associated with this product.

⚠ DANGER

Indicates an imminently hazardous situation, which, if not avoided, will result in death or serious injury.

⚠ WARNING

Indicates a potentially hazardous situation, which, if not avoided, could result in death or serious injury.

⚠ CAUTION

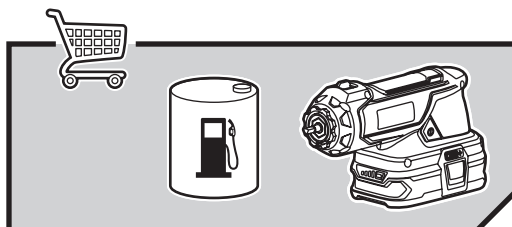
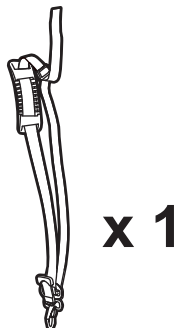
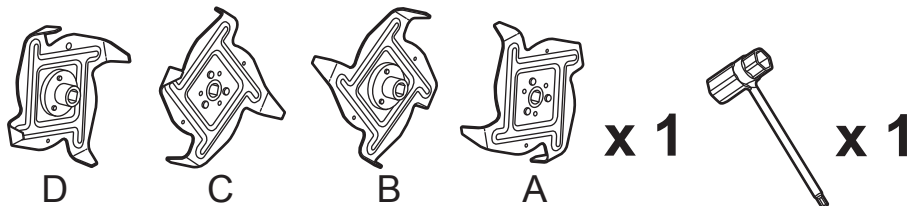
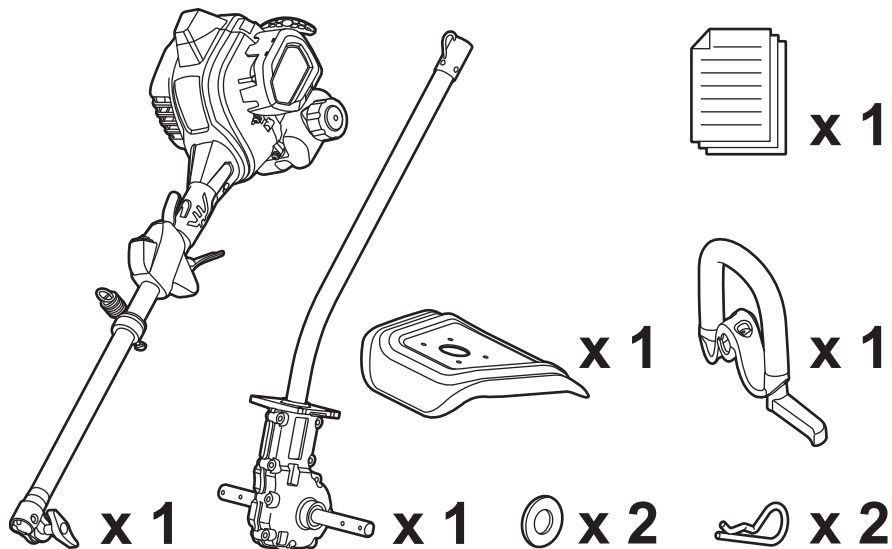
Indicates a potentially hazardous situation, which, if not avoided, may result in minor or moderate injury.

CAUTION

Without safety alert symbol

Indicates a situation that may result in property damage.

WHAT'S IN THE BOX

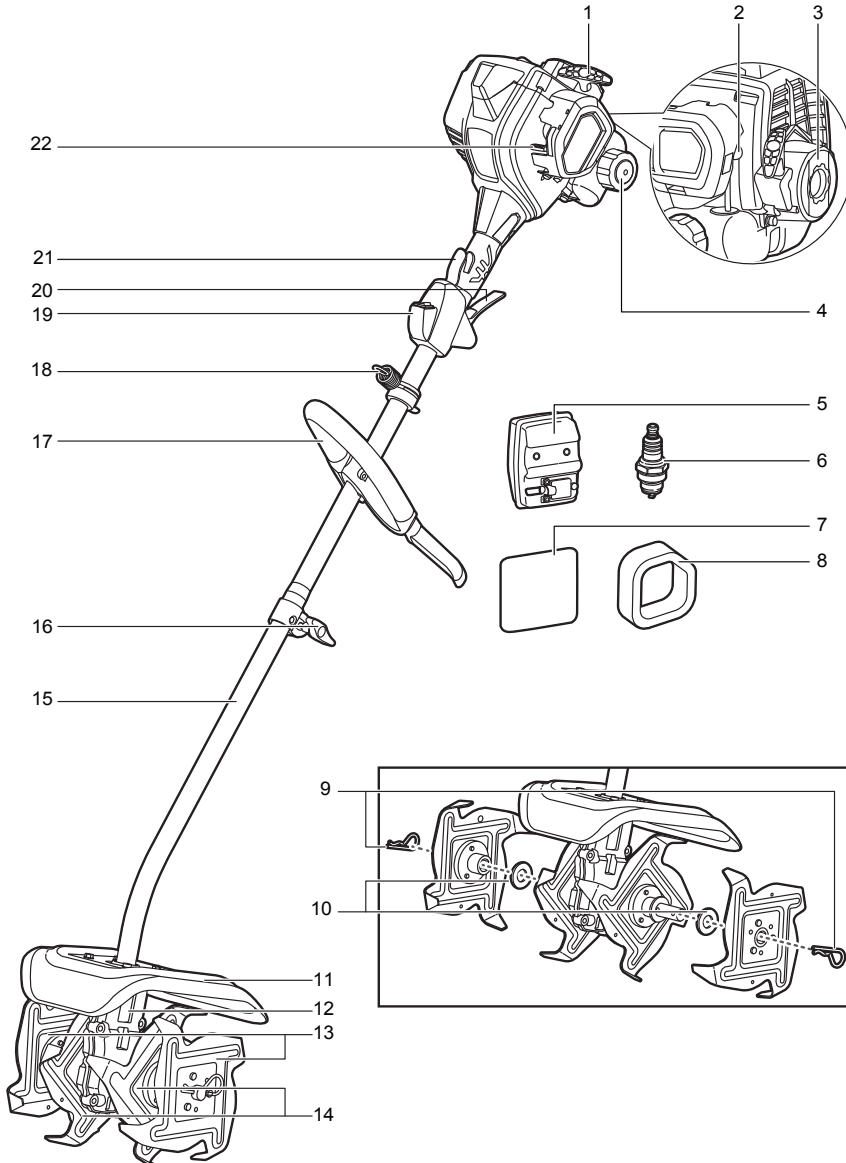


KNOW YOUR PRODUCT

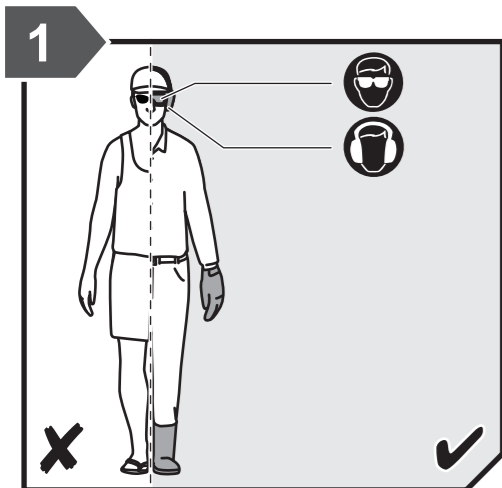
1. Starter grip
2. Primer bulb
3. E-starter housing
4. Fuel cap
5. Muffler
6. Spark plug
7. Spark arrestor
8. Air filter

9. Hitch pin
10. Felt washer
11. Shield
12. Gear box
13. Outer tine
14. Inner tine
15. Lower shaft
16. Handle knob

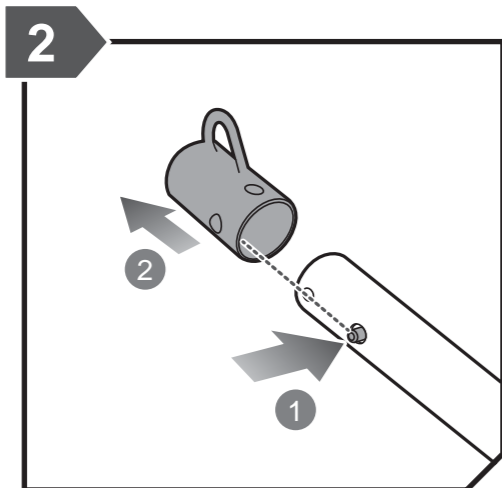
17. Handle
18. Hanger cap
19. Switch button
20. Throttle trigger
21. Trigger lock
22. Choke lever



GETTING STARTED

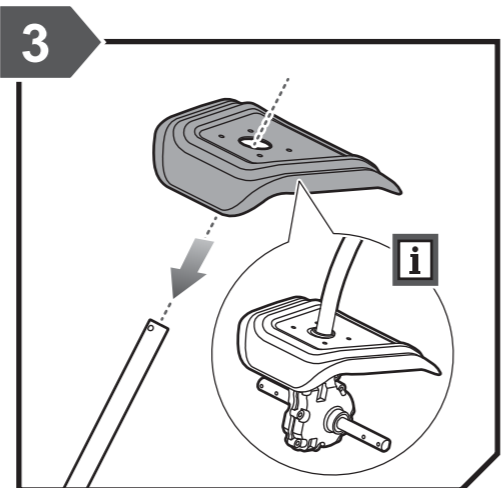


Always wear safety goggles or safety glasses with side shields when operating the product. Failure to do so could result in objects being thrown into your eyes resulting in possible serious injury.

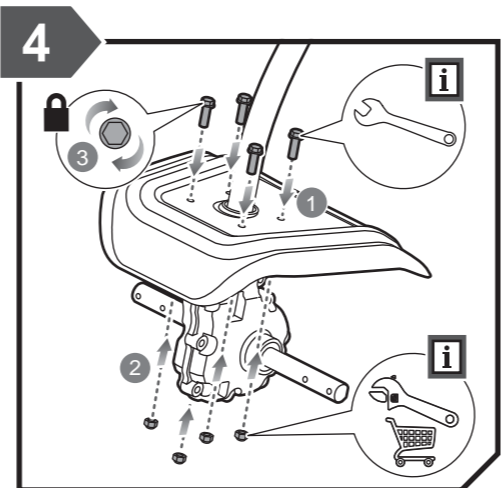


Release the hook.

GETTING STARTED

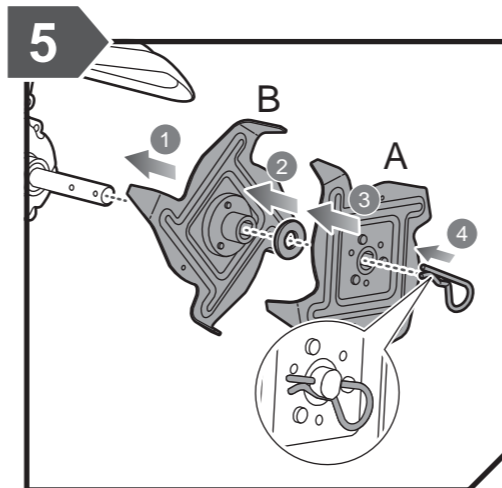


Install the metal cover.

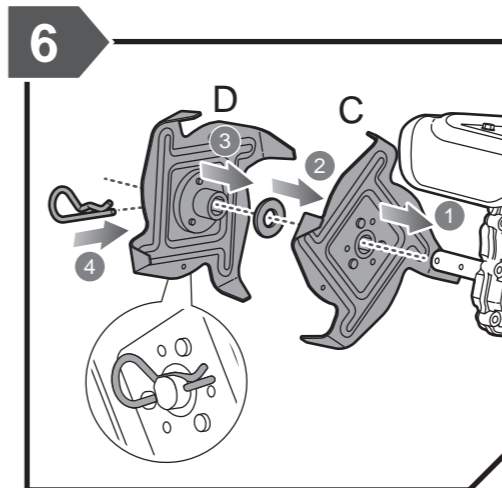


Install and tighten the screw onto the metal cover.

GETTING STARTED

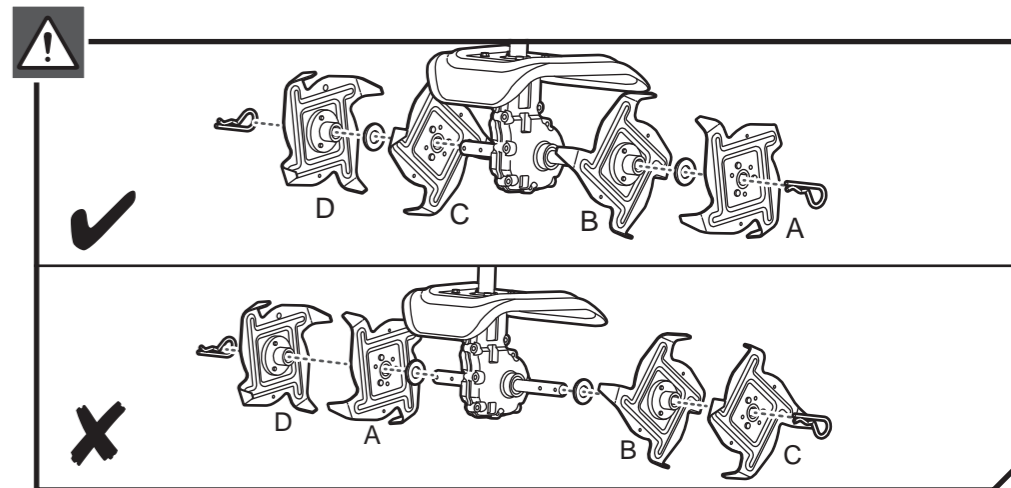


Place tine B on the tine shaft to the right of the gear box. The stamped side of the tine should face away from the gear box. Place a felt washer on the tine shaft. Place the outer tine labeled A on the right side of the tine shaft. The stamped side should face in toward tine B. To secure the tines to the tine shaft, insert the hitch pin into the holes located on the side of the tine shaft.

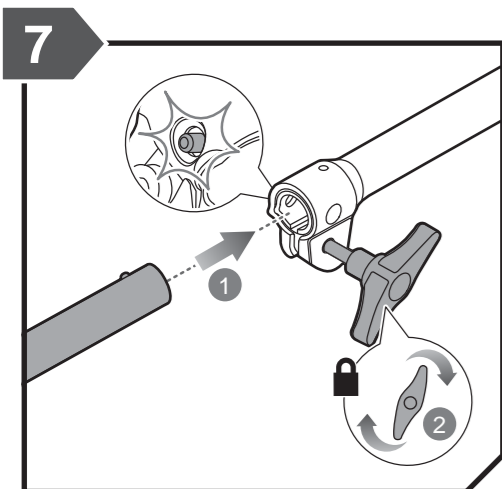


Place tine C on the tine shaft to the left of the gear box. The stamped side of the tine should face away from the gear box. Place a felt washer on the tine shaft. Place the outer tine labeled D on the left side of the tine shaft. The stamped side should face in toward tine C. To secure the tines to the tine shaft, insert the hitch pin into the holes located on the side of the tine shaft.

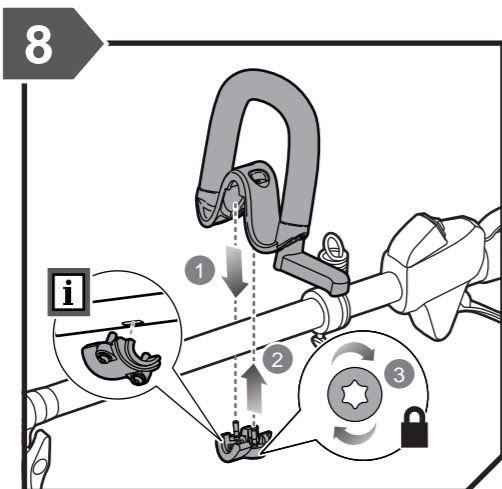
GETTING STARTED



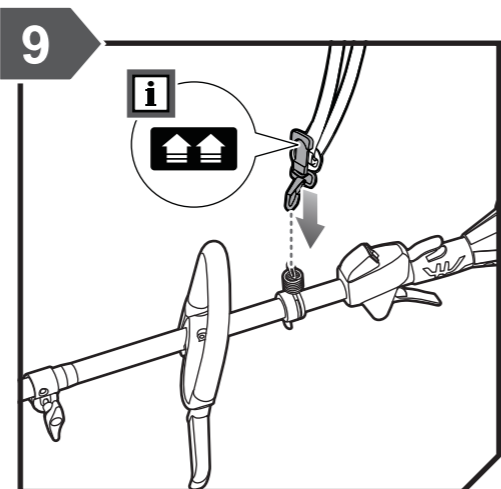
NOTE: The unit will not operate properly if the tines are installed incorrectly.



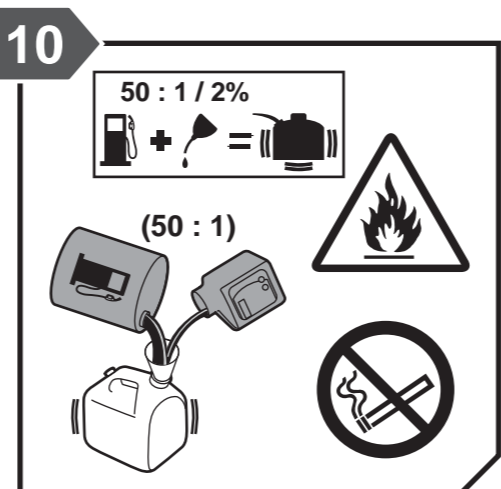
Attach the lower shaft. Tighten the knob securely.



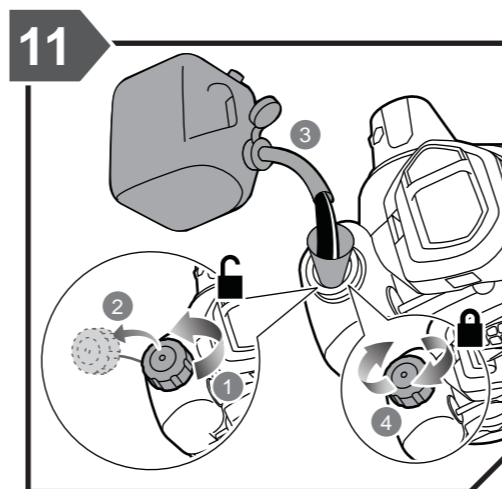
Install the D-handle.



Attach the shoulder strap.



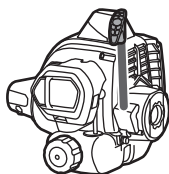
Use synthetic 2-stroke lubricant only. Do not use automotive lubricant or 2-stroke outboard lubricant. Mix 2% synthetic 2-stroke lubricant into the petrol. This is a 50:1 ratio.



Loosen the fuel cap. Remove the fuel cap. Carefully pour fuel mixture into the tank. Avoid spillage. Immediately replace fuel cap and hand tighten.

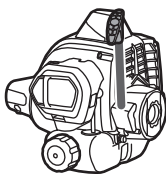
OVERVIEW

Starting a cold engine



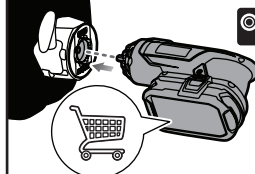
p.11

Starting a warm engine

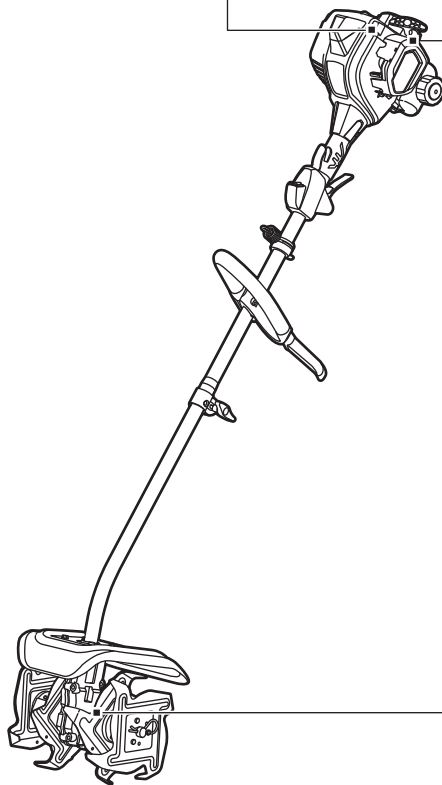


p.12

Starting a cold engine by e-starter



p.13

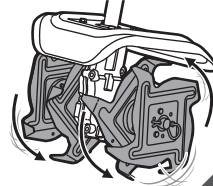


Starting a warm engine by e-starter



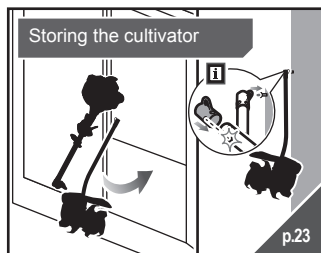
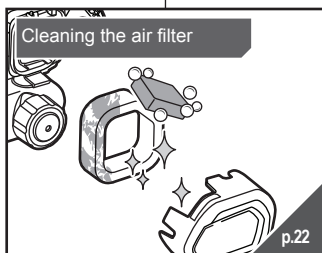
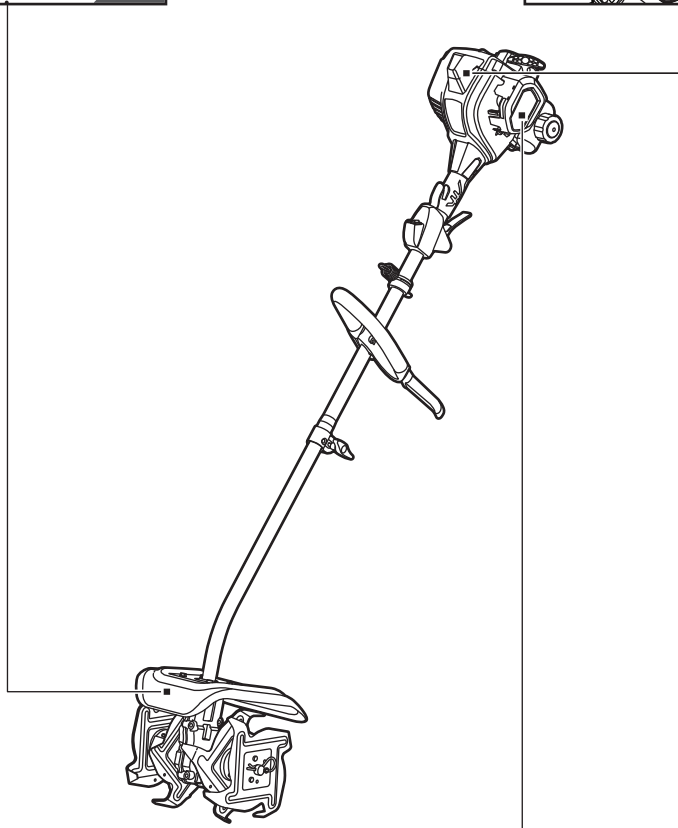
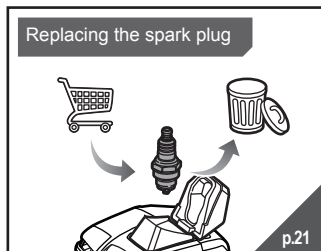
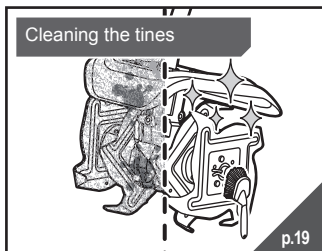
p.15

Four-tine operation

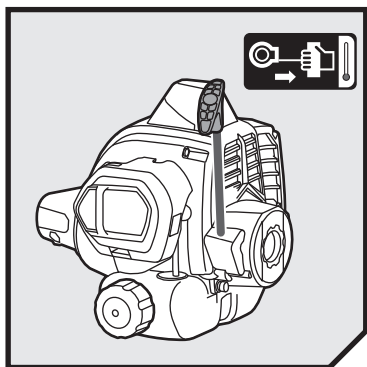


p.17

OVERVIEW




STARTING PROCEDURE





STARTING A COLD ENGINE


1. Lay the product on the ground. Ensure that the cutting means will not contact anything when it starts to rotate. Press the primer bulb 10 times.

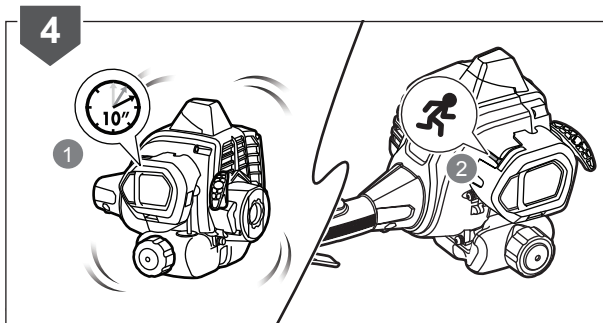
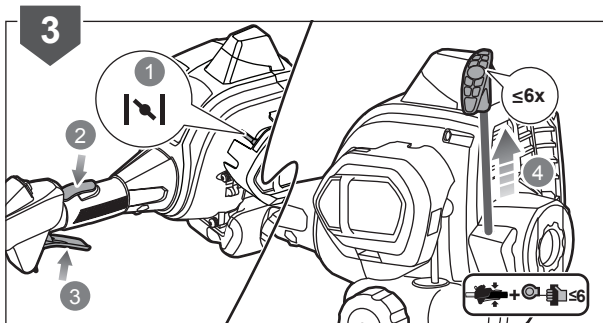
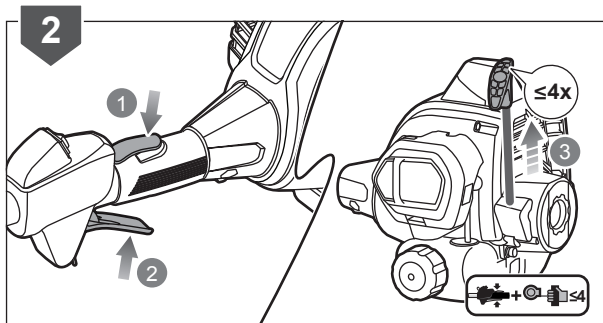
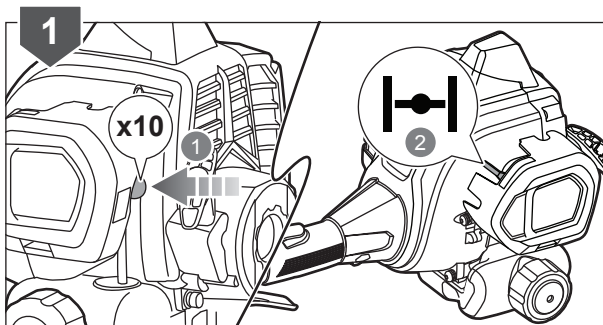
NOTE: After the 7th press, the fuel should be visible in the primer bulb. If not, continue pressing until the fuel is visible.

Set the choke lever to  choke position.

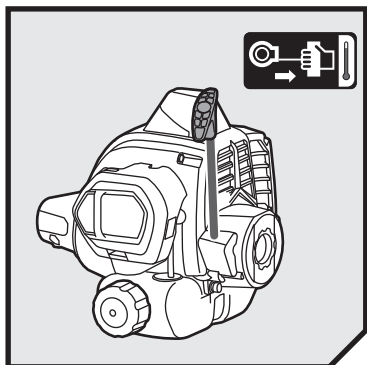
2. Hold down the throttle lock and then squeeze the throttle trigger completely and pull the starter grip until the engine attempts to start. Do not pull the starter grip more than 4 times. Keep the throttle trigger squeezed completely through step 4.
3. Set the choke lever to  choke position. Pull the starter grip until the engine starts. Do not pull the starter grip more than 6 times.

NOTE: If the engine does not start, repeat the procedure from setting the choke lever to  choke position.


4. Allow the engine to run for 10 seconds, then set the choke lever to  position.



STARTING PROCEDURE

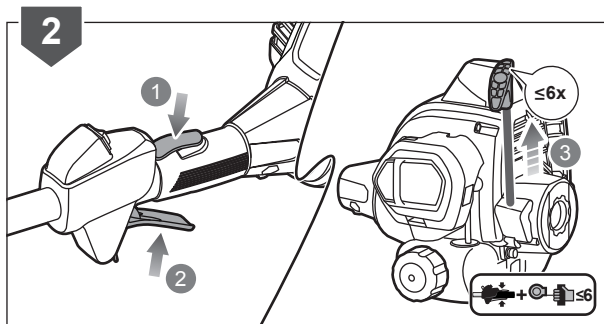
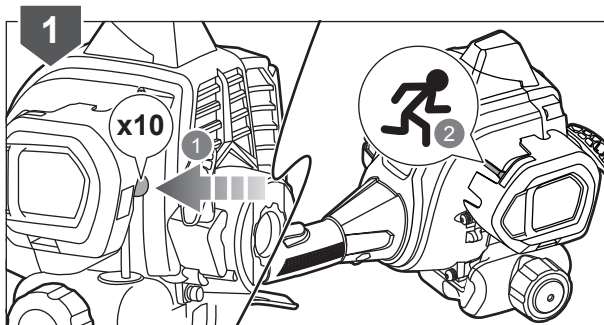


STARTING A WARM ENGINE

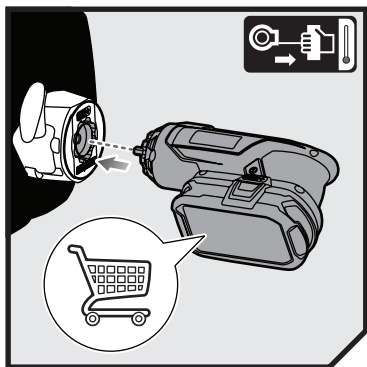
1. Lay the product on the ground. Ensure the cutting means will not contact anything when it starts to rotate. Press the primer bulb 10 times. Set the choke lever to  position.
2. Hold down the throttle lock and then squeeze the throttle trigger completely and pull the starter grip until the engine starts. Do not pull the starter grip more than 6 times.

NOTE: If the engine does not start by following this procedure, follow the Starting a Cold Engine procedure section in this manual.

If the engine still fails to start, see the solution instruction for the "Flooded engine" in the "Troubleshooting" section of this manual.



STARTING PROCEDURE



STARTING A COLD ENGINE BY ELECTRICAL STARTER


1. Install the starter bit into the electrical starter with the pentagon bit facing outside. Push the F/R button to the left until the pentagon symbol shows on the F/R button.

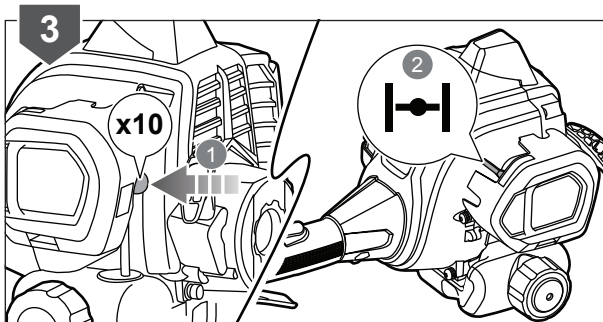
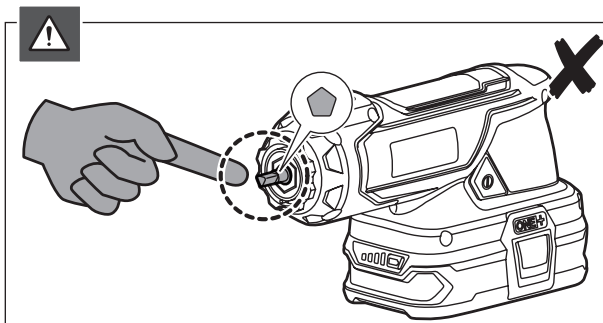
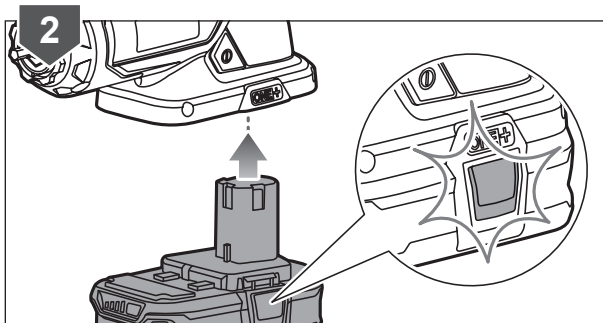
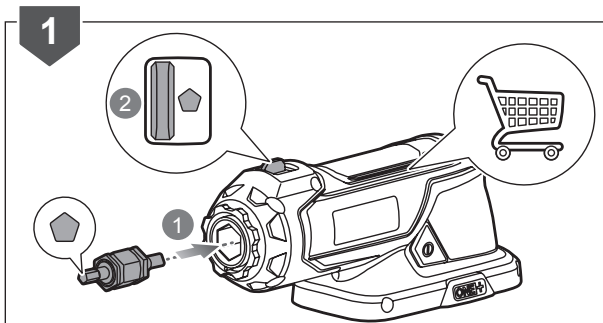
2. Insert the battery pack into the electrical starter until it clicks into place.

WARNING: Keep your hands away from the starter bit to avoid injury.

3. Lay the product on the ground. Ensure that the cutting means does not come in contact with anything. Press the primer bulb 10 times.

NOTE: After the 7th press, the fuel should be visible in the primer bulb. If not, continue pressing until the fuel is visible.

Set the choke lever to  choke position.




STARTING PROCEDURE

4. Hold down the throttle lock and then squeeze the throttle trigger completely with your left hand and keep the throttle trigger squeezed completely through steps 6.


Hold the product with one hand and use your other hand to insert the starter drive shaft into the engine starter housing. Make sure the starter bit is properly engaged.

Press and hold the electrical starter switch button until the engine attempts to start. Do not press the electrical starter for more than 4 seconds.


5. Set the choke lever to  choke position.

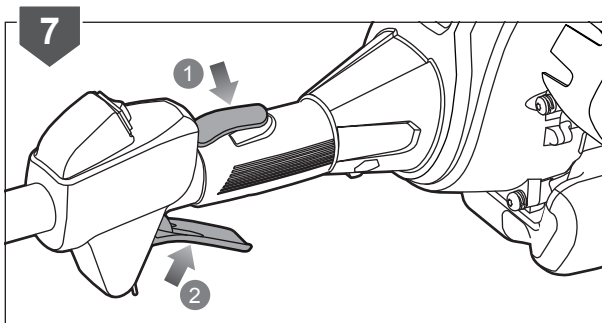
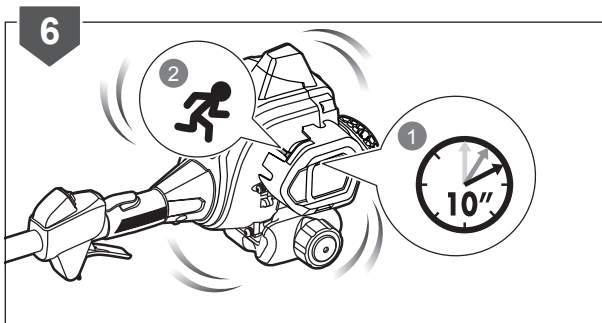
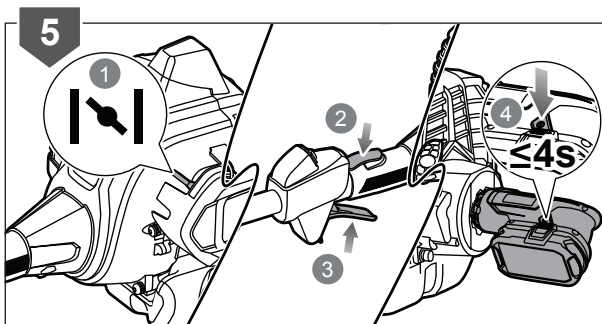
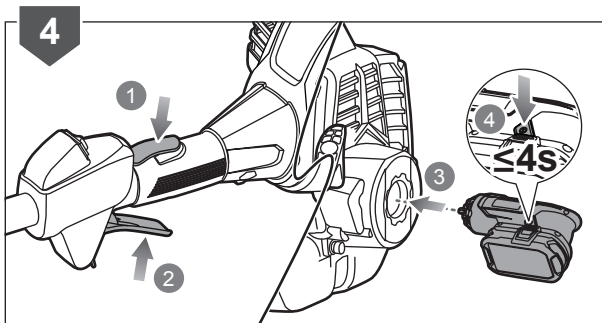
Hold down the throttle lock and then squeeze the throttle trigger.

Press and hold the electrical starter switch button until the engine starts. Do not press the electrical starter for more than 4 seconds.

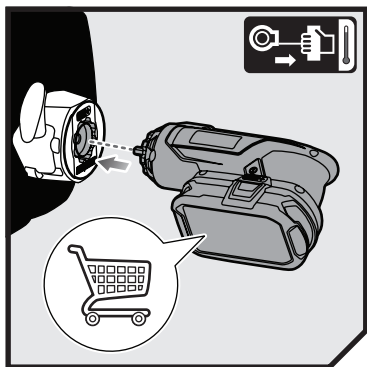
NOTE: If the engine does not start, repeat the procedure from setting the choke lever to  choke position. Do not repeat the procedure more than 1 time.

If the engine still fails to start, see the solution instruction for the "Flooded engine" in the "Troubleshooting" section of this manual.

6. Allow the engine to run for 10 seconds, and then set the lever to  position.
7. Hold down the throttle lock and then squeeze the throttle trigger to start using the product.



STARTING PROCEDURE



STARTING A WARM ENGINE BY ELECTRICAL STARTER

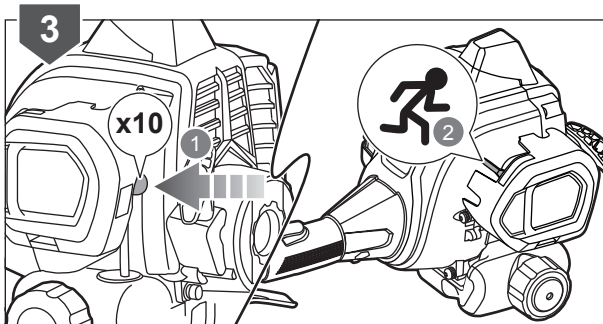
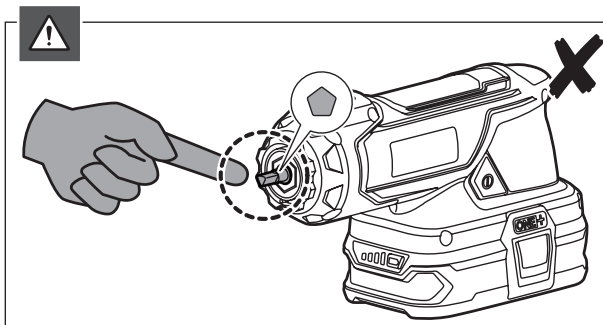
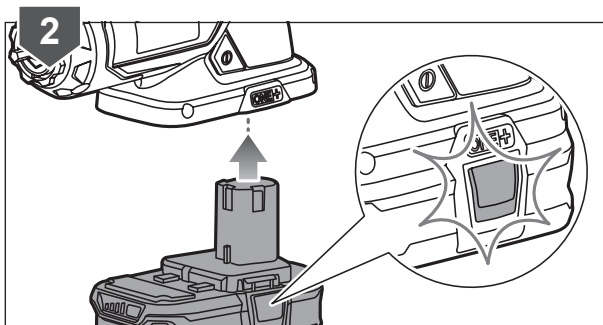
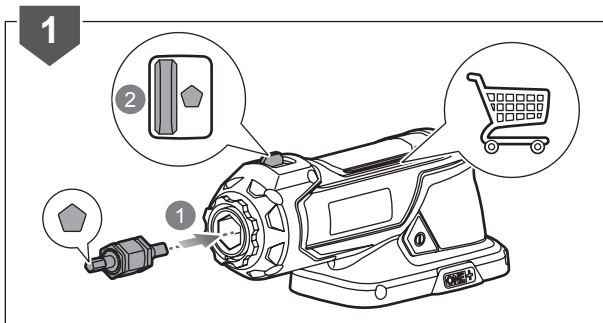
1. Install the starter bit into the electrical starter with the pentagon bit facing outside. Push the F/R button to the left until the pentagon symbol shows on the F/R button.

2. Insert the battery pack into the electrical starter until it clicks into place.

WARNING: Keep your hands away from the starter bit to avoid injury.


3. Lay the product on the ground and make sure that the cutting means does not come in contact with anything. Press the primer bulb 10 times.

Set the choke lever to  position.



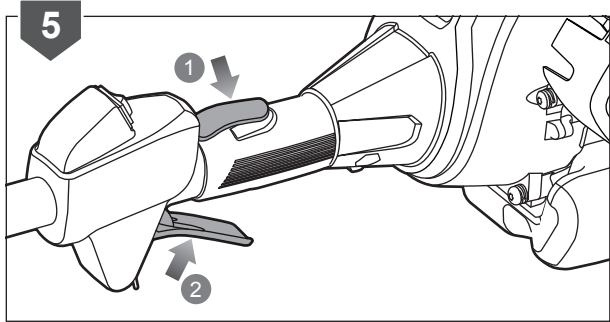
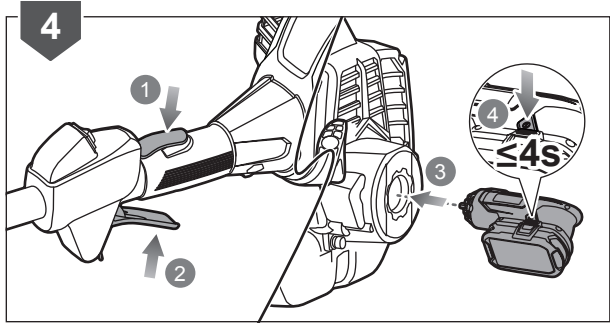
STARTING PROCEDURE

4. Hold down the throttle lock and then squeeze the throttle trigger completely with your left hand and keep the throttle trigger squeezed completely. Hold the product with one hand and use your other hand to insert the starter drive shaft into the engine starter housing. Make sure the starter bit is properly engaged.

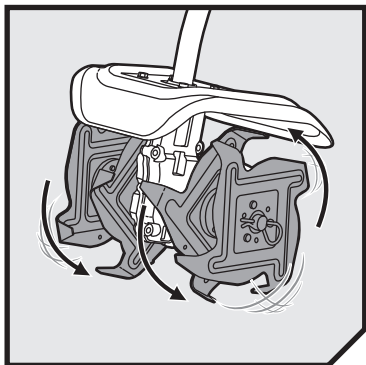
NOTE: If the engine does not start, repeat the procedure from setting the choke lever to  choke position. Do not repeat the procedure more than 1 time. If the engine still fails to start, follow the Starting a Cold Engine procedure section in this manual.

If the engine does not start after following the Starting a Cold Engine procedure, see the solution instruction for the "Flooded engine" in the "Troubleshooting" section in this manual.

5. Hold down the throttle lock and then squeeze the throttle trigger to start using the product.



OPERATION

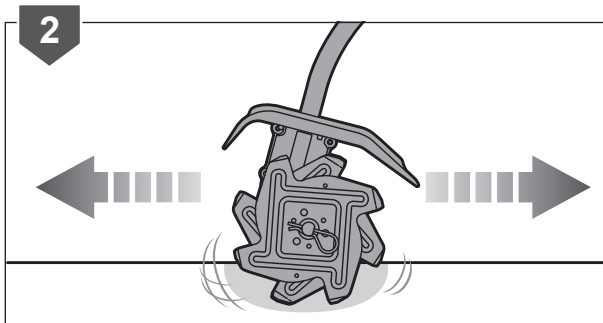
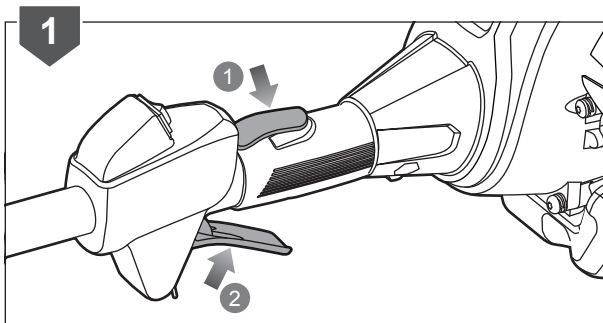
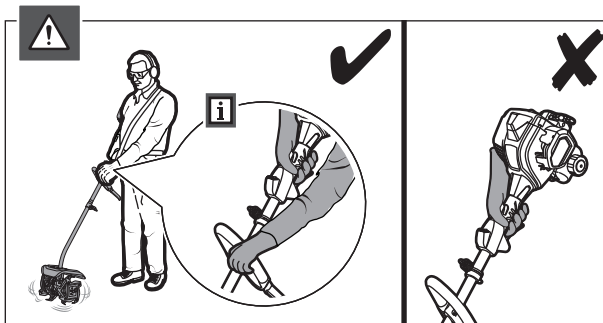
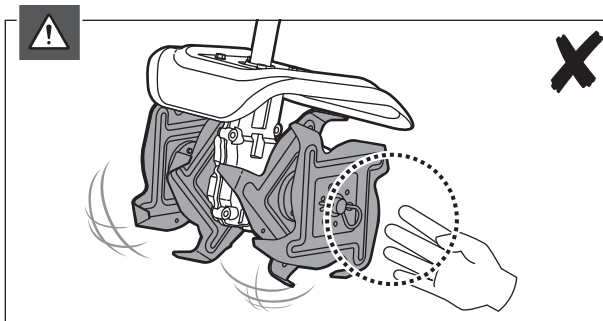


FOUR-TINE OPERATION

WARNING: Keep hands and feet away from the rotating tines at all times.

CAUTION: The product must be adequately controlled by using two-handed operation at all times.

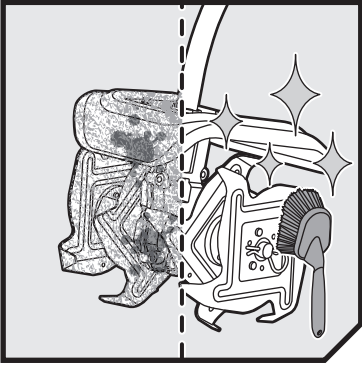
1. Hold down the throttle lock and then squeeze the throttle trigger to start using the product.
2. Pull and/or push the cultivator while it is digging in the soil's surface.



OPERATION

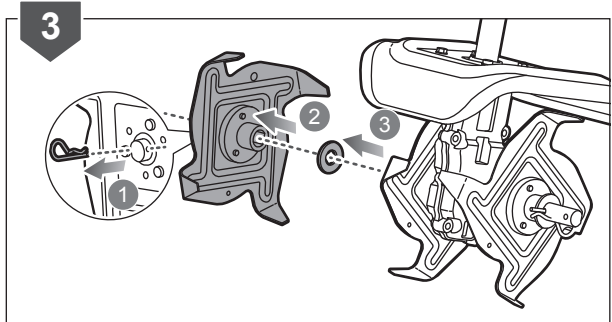
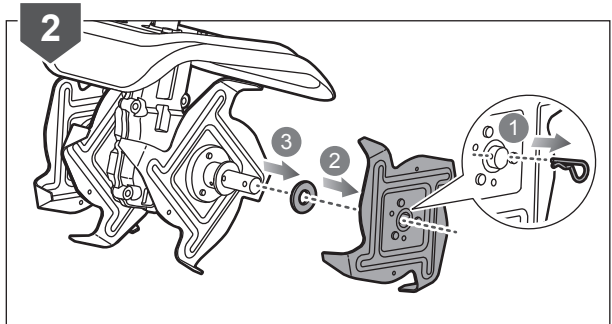
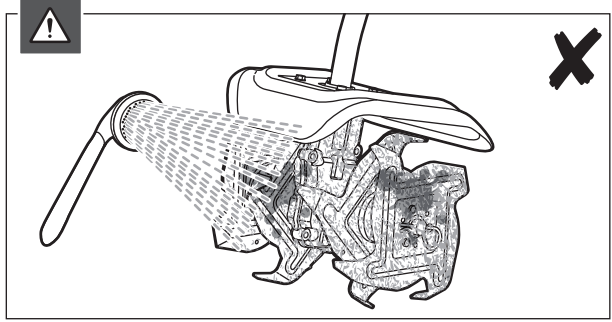
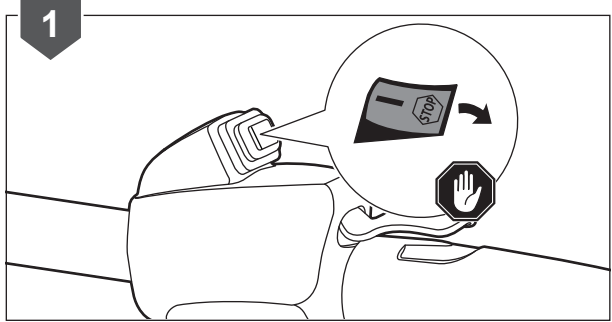
NOTE: For cultivating ease and safety, use a forward and backward motion when using the product.





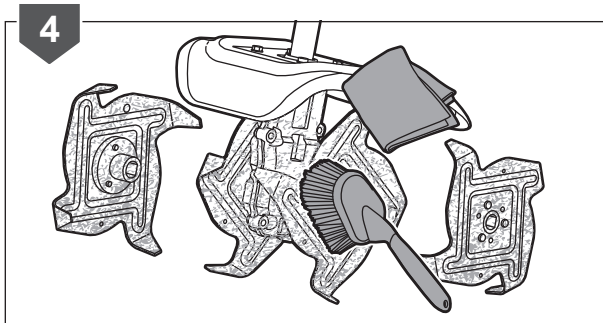
CLEANING THE TINES

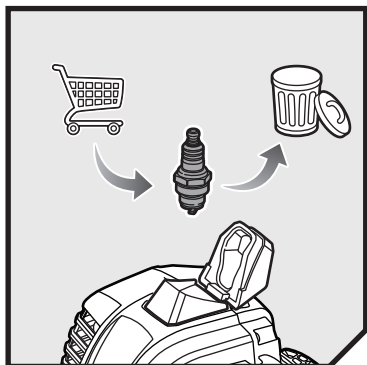
1. Press the switch to the STOP position to stop the engine.
- WARNING:** Do not use water to clean the tines.
2. Remove the hitch pin, tine A and felt washer.
 3. Remove the hitch pin, tine D and felt washer.



MAINTENANCE

4. Clean the product with a soft, dry cloth, and clean the debris from the tines with a stiff brush.





REPLACING THE SPARK PLUG

1. Press the switch to the STOP position to stop the engine.

2. Hold the front portion of the rubber protect boot and pull it away from the housing.

Pull the rubber protect boot upward to release the hook.

Twist the metal spark plug boot and pull it away from the spark plug.

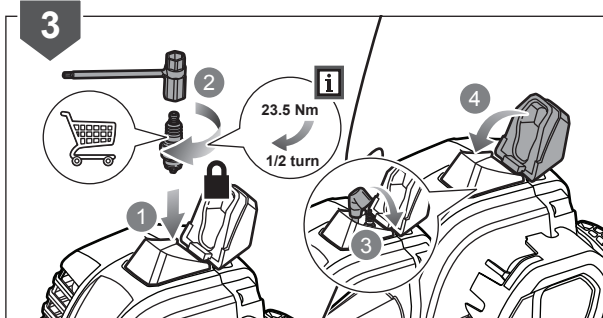
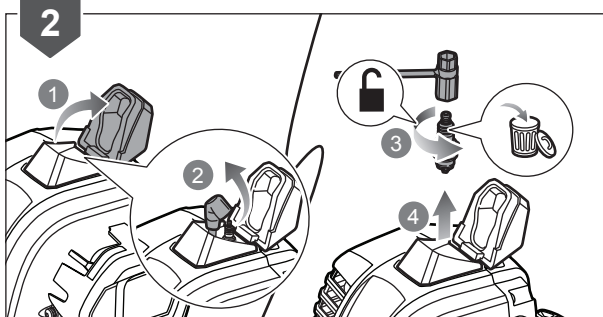
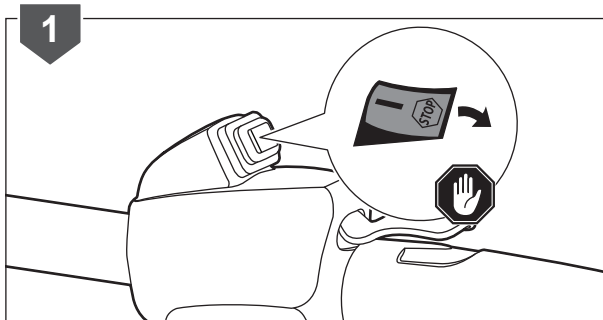
Loosen the spark plug by turning it in a counterclockwise direction using a combination wrench.

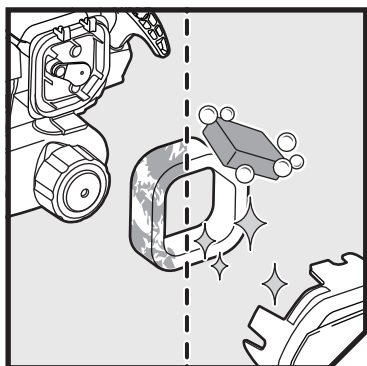
Remove the old spark plug and replace with a new one.

3. Hand thread the new spark plug by turning it clockwise for about 4 1/2 turns. Tighten securely with a combination wrench at 23.5 Nm (turn a new spark plug 1/2 flat past finger tight). Do not overtighten.

Assemble back the metal spark plug boot and the rubber protect boot.

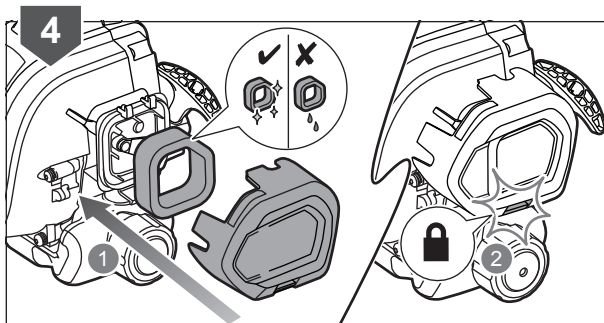
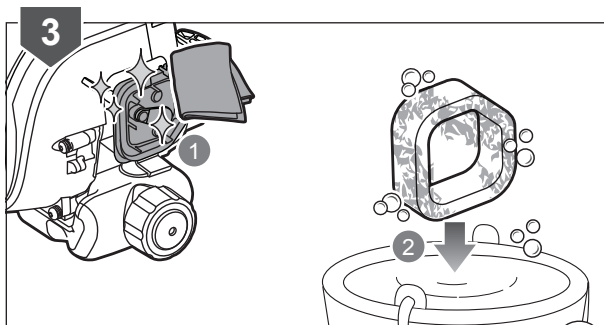
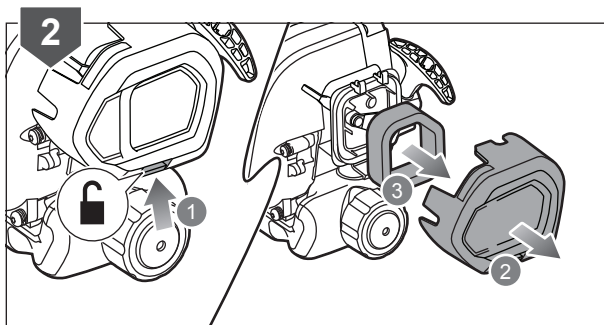
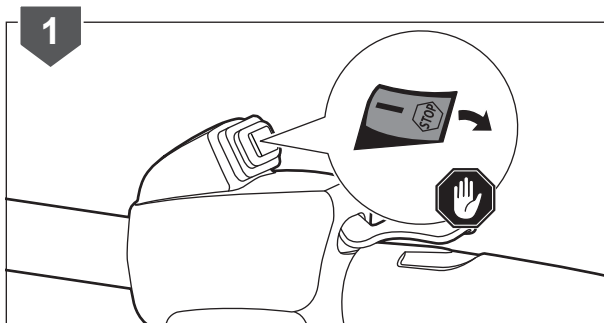
NOTE: Recommended spark plug is RCJ6Y (Champion).



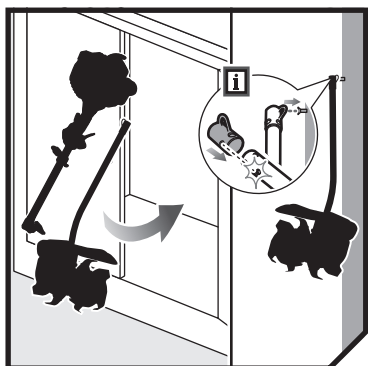


CLEANING THE FILTER

1. Press the switch to the STOP position to stop the engine.
2. Remove the air filter cover and the air filter.
3. Clean the air filter with warm, soapy water.
4. Rinse and dry the air filter completely.



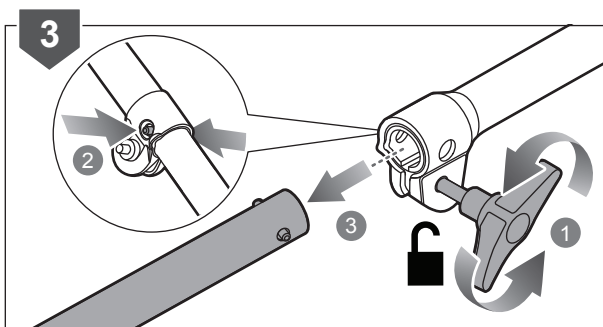
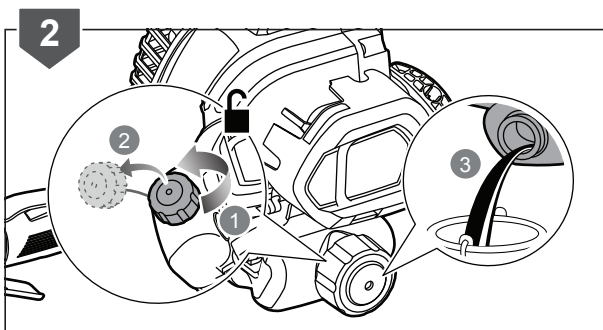
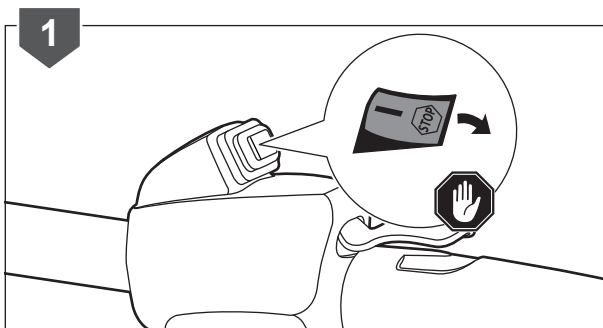
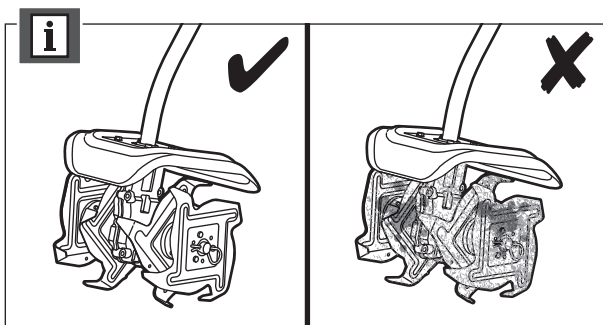
STORAGE



STORING THE CULTIVATOR

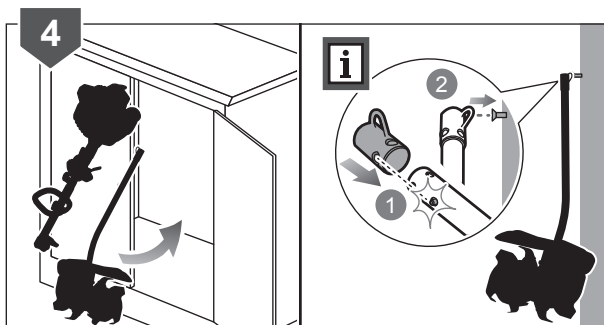
NOTE: Clean all foreign materials from the product.

1. Press the switch to the STOP position to stop the engine.
2. Loosen and remove the fuel cap. Drain all the fuel from the tank into a container approved for petrol. Run the engine to remove all fuel. Place and tighten the fuel cap.
3. Remove the lower shaft.



STORAGE

4. Store the product in a cool, dry, and well-ventilated place that is inaccessible to children and well away from sources of ignition.



PRODUCT SPECIFICATIONS

Petrol cultivator

Model RC2540

For assembling with petrol-driven power head (below values measured with xxxxxx power head)

Engine displacement 25.4 cc

Maximum engine performance 0.75 kW

Engine speed (rotational frequency) at maximum 12000/min

Engine speed (rotational frequency) at idle 2600-3500/min

Operator Sound Pressure Level determined according to EN 709 (ISO 22868) 83.7 dB(A)

Uncertainty 3.0 dB

Noise emission values determined according to (NSW) Protection of the Environment Operations (Noise Control) Regulation 2017 79.6 dB(A)

Uncertainty 3.0 dB

Vibration total values determined according to EN 709

Front handle 3.4 m/s²

Rear handle 7.8 m/s²

Uncertainty 1.5 m/s²

REPLACEMENT PARTS

Spark plug RCJ6Y (Champion)

Imported by:

Techtronic Industries Australia Pty Ltd
31 Gilby Road, Mount Waverley, VIC 3149
Melbourne, Australia

Techtronic Industries N.Z. Limited
2 Landing Drive, Mangere
Auckland, 2022, New Zealand