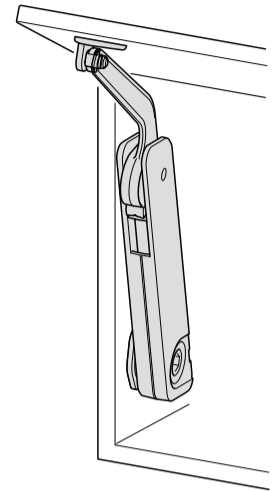


## FREE FLAP H1.5

### Side Mounted Flap Stay



- > Material: Housing, mounting bracket, screw-on  
Bracket and hex key: Plastic  
Support arm: Plastic
- > Finish/colour: Housing and surface mounted parts: White  
Support arm: White
- > Installation: Lid stay: Without tools,  
Mounting bracket and screw-on bracket:  
for screw fixing
- > Adjustment facility: Holding power adjustment

Cabinet height (mm)	Flap weight (kg)
275	2.8–3.8
300	2.2–3.4
350	2.1–2.9
400	1.6–2.3
450	1.3–2.2
500	1.2–2.0
550	1.2–1.9
600	0.9–1.6

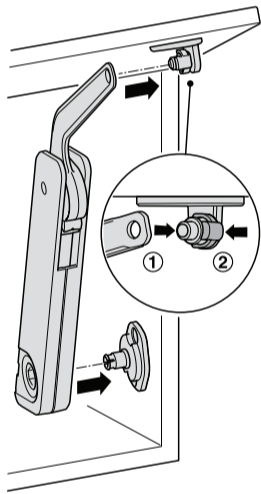


**Note:**

- > The following mounting dimensions and sample measurements tables for this kind of application must be adhered to
- > The weight specification applies to one Free Flap H 1.5 fitting.
- > For use in combination with standard 110° concealed hinges with or without integrated soft closing mechanism
- > For door height and width of up to 600 mm

#### QUICK FIXING SYSTEM

Fitting is simply clipped onto the pre-mounted fixing plates



#### HOLDING POWER ADJUSTMENT

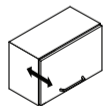
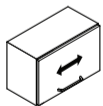
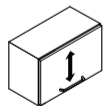
Holding power adjustment with SW10 Allen key



**Note:**

- Use position 1–8 for adjusting the holding power
- Use position 9–12 to re-adjust flap (if necessary)

#### ADJUSTMENT FACILITY FOR FRONT PANEL



Height adjustment\*    Side adjustment\*    Tilt adjustment\*

\*Dependent on the concealed hinges that are used

MADE IN HUNGARY



## INSTALLATION INSTRUCTIONS

