

# Euro Frameless



## Hinged Shower Screen

### Installation Instructions

Frameless  
Reversible  
Chrome Fittings  
8mm Clear Safety Glass  
Hinged Door  
Magnetic Door Seals  
Easy Clean Glass



#### Available sizes:

To suit 900 x 900mm Base  
Front width adjusts: 850 – 870mm  
Return width adjusts: 850 – 870mm  
Screen height: 2000mm  
I/N: 4890311

To suit 1200 x 900mm Base  
Front width adjusts: 1150 – 1170mm  
Return width adjusts: 850 – 870mm  
Screen height: 2000mm  
I/N: 4890312

To suit 1500 x 900mm Base  
Front width adjusts: 1450 – 1470mm  
Return width adjusts: 850 – 870mm  
Screen height: 2000mm  
I/N: 4890584

#### **IMPORTANT TO READ BEFORE INSTALLING**

Please inspect this product for damage, manufacturing fault or missing parts prior to commencing the process of installation, no warranty will be applied after installation has begun.

Prior to installation, please ensure there are no pipes or cables hidden in the wall where you intend to drill.

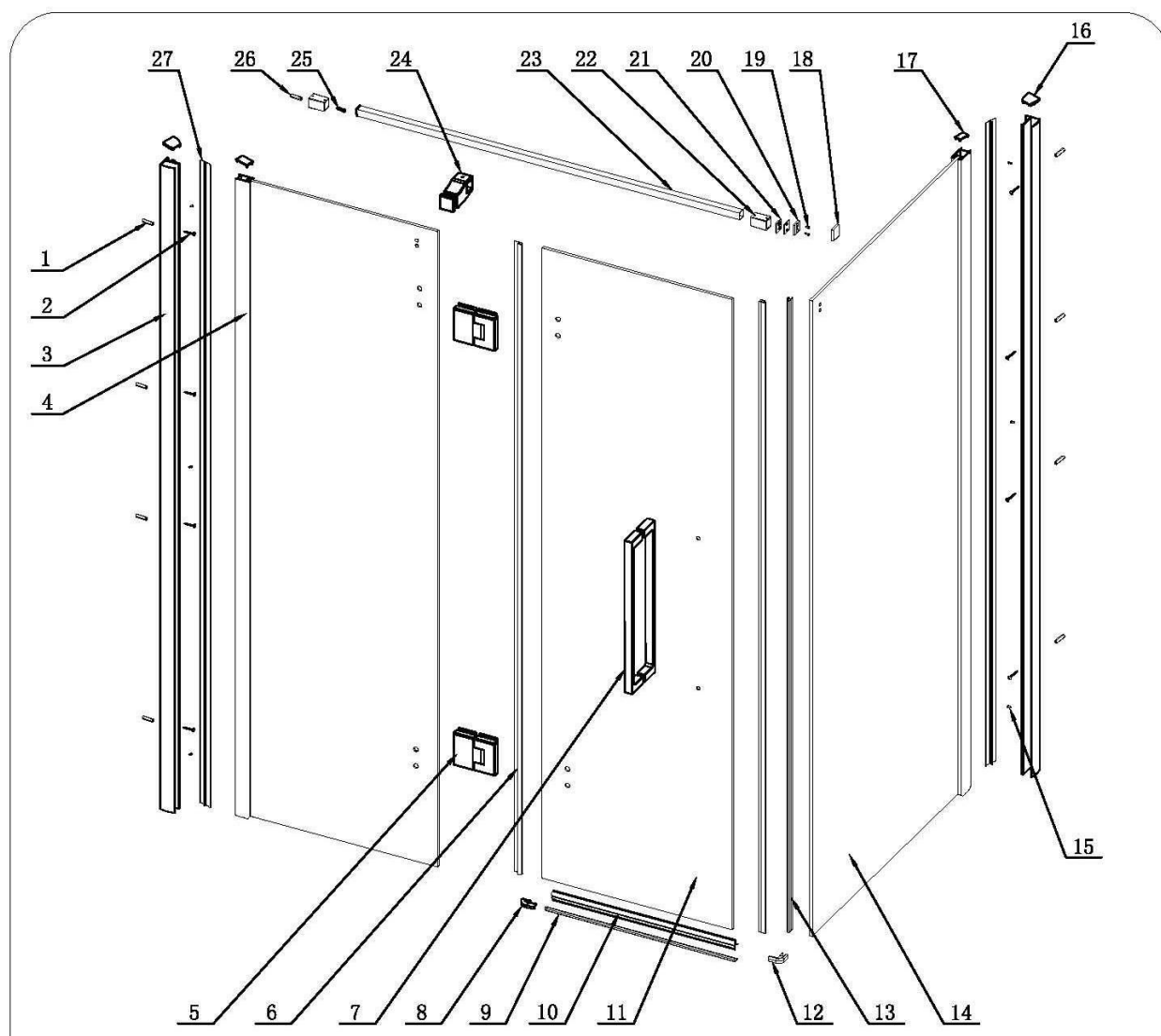
All of our Shower Screens must be handled with extreme care as glass is fragile and can shatter if handled incorrectly. Glass is not covered by warranty. You will notice through-out the installation process that the corners of any glass that is frameless or semi frameless have a protective cover. Please try to leave these protective covers on any panels that have them until after you have moved panels into position. Throughout the entire installation process please ensure that the washers and grommets supplied are inserted correctly so that metal and glass do not make contact. Failure to do so will void warranty and may cause glass to break.

Flat packed DIY shower screens are heavy and may require two people to install.

Please refer to the supplied installation instructions to guide you through the installation process. Before you commence installation, refer to the Components List within the instructions along with the list of tools required to execute the installation.

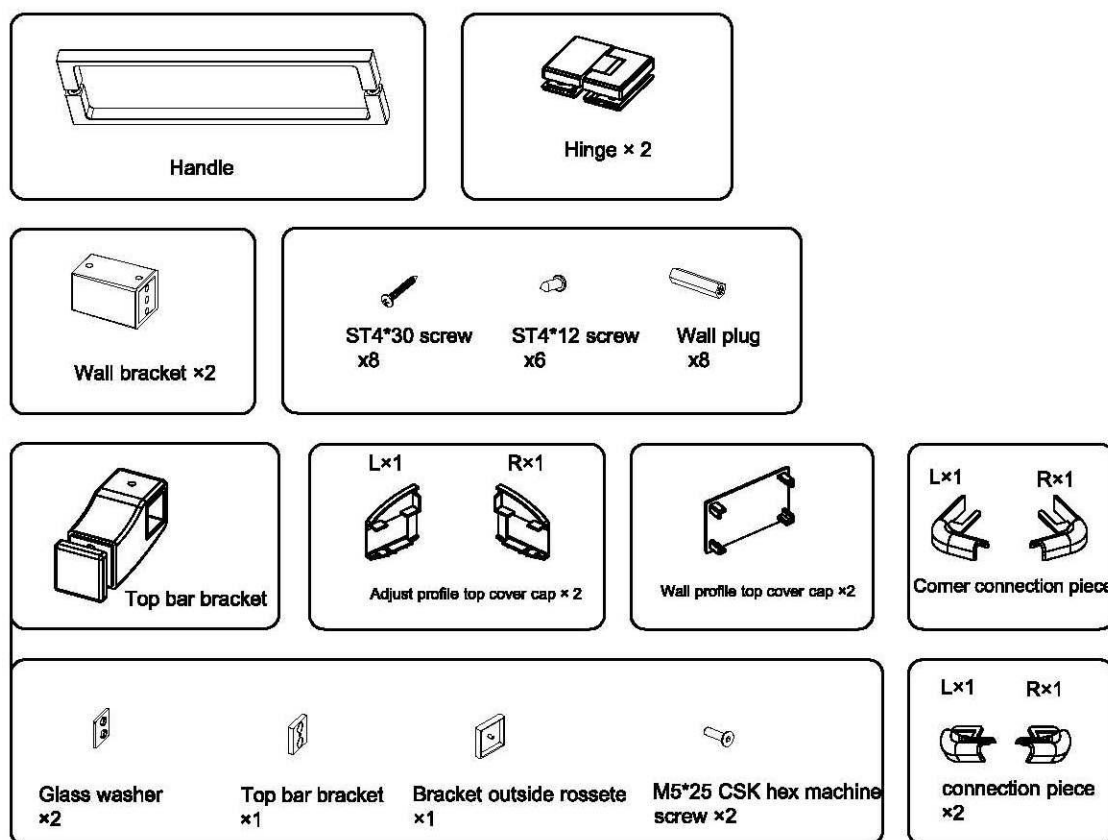
We highly recommend that you cover the shower base area with a protective cloth through-out the installation process to avoid damage to your shower base.

## Components List



No.	Description	QTY	No.	Description	QTY
1	Wall Plug	8	16	Wall Profile	2 (Left & Right)
2	ST5*30 Tapping Screw	8	17	Adjust profile top cover cap	2
3	Wall Profile	2	18	Bracket Outside Rossete	1
4	Fixed Panel	1	19	M5*25 CSK Hex Machine Screw	2
5	Hinge	2	20	Top Bracket	1
6	Moving Door Water Seal	1	21	Glass Washer	2
7	Handle	1	22	Wall Bracket	2
8	Connection Piece	2 Left / Right	23	Top Bar	1
9	Bottom Metal Water Strip	1	24	Top Bar Bracket	1
10	Bottom Plastic Water Seal	1	25	ST4*40 Tapping Screw	1
11	Moving Door	1	26	Wall Plug	1
12	Corner Connection Piece	2 Left / Right	27	Cover Strip	2
13	Magnetic Seal	2			
14	Side Panel	1			
15	ST4*12 Tapping Screw	6			

## Components List and Tools Required



## Tools Required

- Level
- Drill
- Mallet
- Silicone
- Silicone gun
- Pencil
- Screw driver
- Tape measure
- Chisel
- Stanley Knife
- Drill bit 3.2mm & 6mm

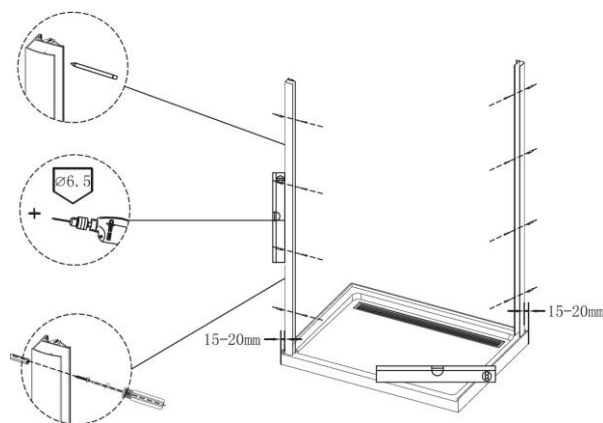
**STEP 1: LEVEL & MEASURE**

- a. Place cloth down to protect base
- b. Ensure that installation occurs with a level base or shower area and pack where necessary.
- c. Mark & measure area by referring to your minimum & Maximum , the minimum and maximum measurements for this shower screen is as follows, depending upon the size of screen you are installing:
  - a. For the 900 x 900 unit the front adjusts from 850 – 870mm, and the return width adjusts from 850 – 870mm
  - b. For the 1200 x 900 unit the front adjusts from 1150-1170mm, and the return width adjusts from 850 – 870mm
  - c. For the 1500 x 900 unit the front adjusts from 1450 – 1470mm, and the return width adjusts from 850 – 870mm
- d. **NOTE:** When using minimum measurement, make sure you allow for walls that are out of level. If your walls are leaning forward by 10mm, you must reduce your screen size area by this amount.

**STEP 2: MARK, DRILL & FIX WALL PROFILE**

- a. Move wall profile (Part3) into position
- b. With a level, position wall profile (Part 3) against wall at desired measurement, within min and max measured area.
- c. With a pencil, mark the pre drilled holes inside of wall jamb. Remove wall jamb and drill 6mm hole. (When drilling into tiles use a masonry drill bit). Insert Wall plugs provided
- d. With Screws provided fix wall profile (part3) to wall ensuring wall profile is level and fixed tightly.
- e. Repeat process of step 2a to 2d with the adjacent wall profile (Part 3)

**Note:** Wall profile must be level and set in side of tile flange of base within min and max measurements.

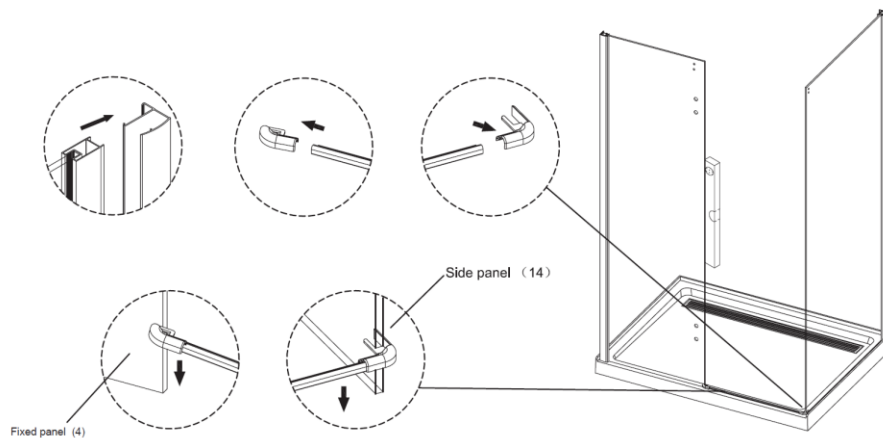


**STEP 3: POSITIONING PANELS**

- a. Slide the **side panel (part 14)** into **wall profile (part 3)**. Do not fix yet, you may need to adjust panels in or out. Ensure **side panel (part 14)** is level, pack if necessary.
- b. Insert **front fixed Panel (part 4)** into **wall profile (part 3)**. Do not fix yet, you may need to adjust panels in or out. Ensure front fixed panel is level, pack if necessary.

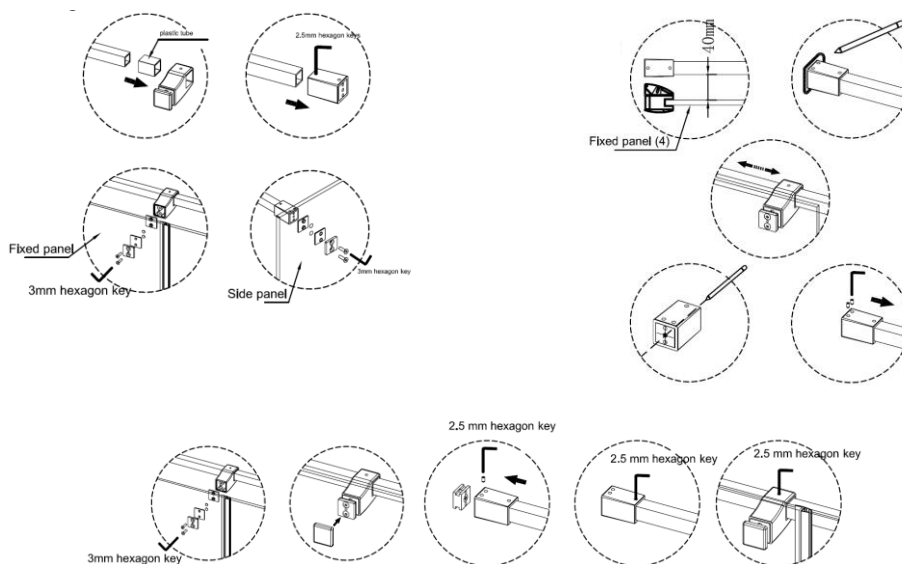
**STEP 4: ATTACHING BOTTOM METAL STRIP**

- a. Insert bottom **metal water strip (part 9)** & attach **connection piece (part 8)** and **corner connection piece (part 12)** to both ends of the **bottom metal water strip (part 9)**
- b. Insert **corner connection piece (part 12)** to the bottom of side panel (part 14)
- c. Insert **connection piece (part 8)** to the bottom of **front fixed panel (part 4)**



## STEP 5: CONNECTING TOP BAR &amp; BRACKETS

- Connect **top bar bracket (part 24)** to the middle of **top bar (part 23)** and connect **wall bracket (part 22)** to both ends of **top bar (part 23)**
- Connect **top bar wall mounting plate (part 20)** to the mounting hole in the return panel, using screws supplied, ensuring **glass washer (part 21)** is on both sides of the glass to avoid metal contacting glass.
- Connect **top bar bracket (part 24)** which you have already connected to **Top bar (part 23)** to the front fixed panel mounting hole, using screws supplied, ensuring **glass washer (part 21)** is on both sides of the glass to avoid metal contacting glass. (Do not fix tightly, the bar will be removed at step 5g.
- Position **wall bracket (part 22)** on side panel top bar **glass mounting plate (part 20)**
- Measure & mark with a pencil on the internal wall at 40mm horizontally from front fixed panel. Place the **top bar (part 23)** over the area you have and now marked and levelled the **top bar (part 23)**
- Mark with a pencil around where the wall mounting bracket now meets the wall.
- Disconnect the **top bar bracket (part 24)** from front fixed panel in order to remove bar, set bar aside.
- Drill 6mm hole in marked position on the wall, insert wall plug and screw wall bracket to wall using **st4\*30 screw**.
- Replace **top bar (part 23)** and **top bar bracket (part 24)** and using grub screws tighten.
- Connect **wall brackets (part 22 a & b)** to top bar **wall / glass mounting plates parts (part 20)** & tighten grub screws using supplied hexagon (allan) key.
- Check levels; top bar, side panel and front panel.
- Place **bracket outside rosette** on face of **top bar bracket (part 24)** and face of side panel **wall bracket (part 22)**

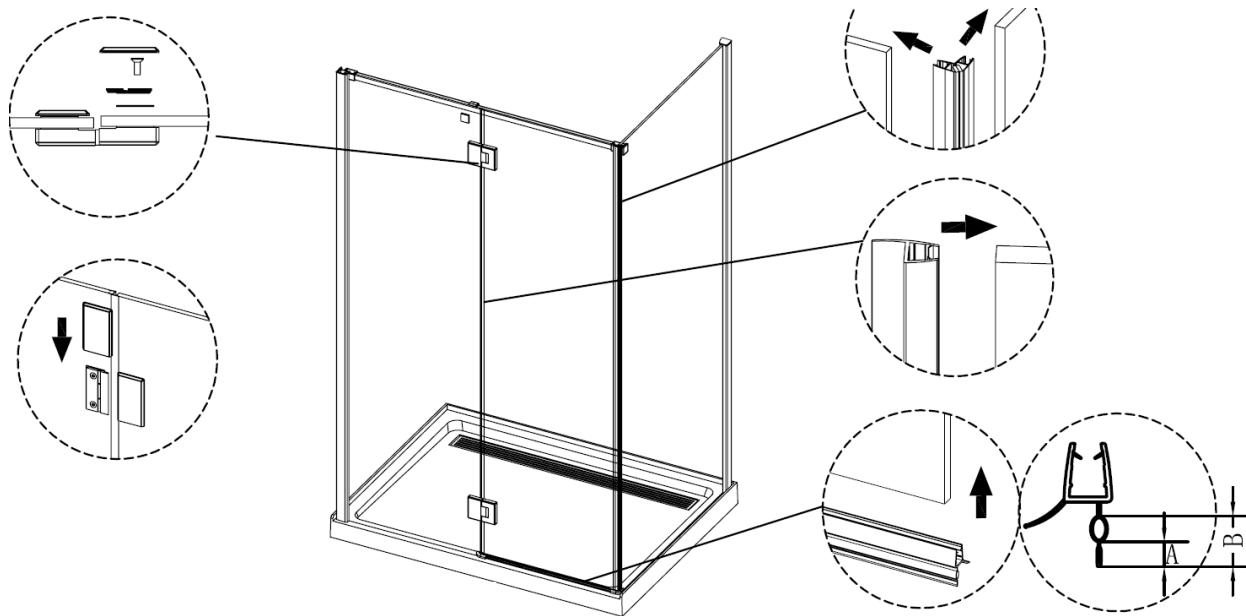


## STEP 6: FITTING HINGES, DOOR &amp; HANDLE

- a. Fit fixed side of **hinges (part 5)** to **fixed panel (part 4)** Ensure that the washers and grommets are inserted correctly so that metal and glass do not make contact. Failure to do so will void warranty and may cause glass to break.
- b. Use the assistance of a second person to fit door to moving side of **hinges (part 5)**. Ensure that the washers and grommets are inserted correctly so that metal and glass do not make contact. Failure to do so will void warranty and may cause glass to break.
  - a. **NOTE: door must open outward for safety purposes; failure to abide by this will void the warranty.**
- c. Attach **handle (Part 7)** to the door. Ensure that the washers and grommets are inserted correctly so that metal and glass do not make contact. Failure to do so will void warranty and may cause glass to break.
- d. Adjust door and ensure it is level and pivots correctly
- e. Place cover plates on hinges on internal side of door

## STEP 7: WATER SEALS

- a. Insert vertical **moving door water seal (part6)** to rear of door
- b. Insert horizontal bottom plastic water seal (part10) on bottom of door
- c. Install vertical **magnetic seals (part 13)** to front of door and leading edge of side panel



**STEP 8: ADJUSTMENT**

- a. Re-check levels and adjust screen accordingly and ensure that door meets the side panel and lines up correctly

**STEP 9: FIXING OFF & APPLYING SILICONE**

- a. Fix the extrusions of side panel and front panel to their wall profile by drilling 4 equally spaced 3.3mm holes on inside of screen and secure with **st4\*12 screws** and **cover plates**.
- b. Apply silicone to outside perimeter of screen, verticals and horizontals, preventing water from leaking out of screen and allowing water to effectively drain back toward outlet. Do not use shower for 24 hours to allow silicone to dry.

**DO NOT USE SILICONE INSIDE OF SCREEN. DOING SO WILL VOID WARRANTY.**

Rick McLean's Designer Shower Screens (Aust) Pty Ltd

Trading as Rick McLean's Designer Bathware

**WARRANTY****- Measured & Installed Products**

Rick McLean's Designer Bathware will provide a 2 year Service Warranty on installation and componentry of measured & fitted Shower Screens, Mirrors & Sliding Robe Doors. Cracked, smashed or broken Glass, Splashbacks and Mirrors are NOT included. Warranty does not cover glass. Replacement glass is covered by the customer's house & contents insurance policy (if applicable) or at the customer's own expense. All glass complies with Australian Standards.

**- Supply Only Products**

Rick McLean's Designer Bathware will provide a 2 year Warranty on our supply only products. Warranty does not cover glass. Replacement glass is covered by the customer's house & contents insurance policy (if applicable) or at the customer's own expense.

Rick McLean's Designer Bathware will supply a replacement product where faulty manufacture or faulty materials exists, only in accordance with correct installation procedure.

This warranty DOES NOT apply to other defects which may have arisen as a result of; accidental damage, misuse, abuse, maltreatment, wear & tear, incomplete return, abnormal stress or neglect of any kind.

This warranty DOES NOT include REMOVAL AND/OR INSTALLATION COSTS and any other associated expenses incurred, including those costs incurred from third party.

It is the responsibility of the recipient to inspect the product/s once received to ensure no transit damage has occurred, and/or missing parts or manufacturing faults are applicable.

Plumbing and Bathware products must be installed by a licensed plumber. Failure to do so will immediately void warranty.

Failure due to other causes, including the use of other than recommended installation procedures, may also void warranty.

Please ensure that plumbing and bathware products are installed in accordance with local by-laws.

Please ensure glass and fragile products are handled with care. Avoid knocks & shock to all sides of packaging when transporting. Warranty does not cover glass.

Freestanding Baths are not designed to be installed hard up against bathroom walls. The sides of the baths taper, even if they appear to be straight edged. Installing freestanding baths up against tiled walls or recessing baths into walls and tiling down onto them is at the client's own discretion. This is not in accordance with correct installation procedure and will void warranty.

Sizes, Prices and Stock Availability of products are subject to change without notice.



Broken Glass or missing parts will not be replaced under warranty if the Shower Screen is in the process of being installed.

The safety glass featured in all Shower Screens cannot be cut, trimmed or altered in any way.

Manufactured sizes of Shower Screens, Shower Bases & Baths are nominal. Actual sizes may vary during manufacturing.

- How to make a claim for Credit or Exchange of Goods for Supply Only Products

Rick McLean's Designer Bathware will credit or exchange goods within 14 working days from time of purchase.

The customer will be deemed to have accepted the goods as being in accordance with its order unless it notifies Rick McLean's Designer Bathware of its claim within 14 days of receipt of the goods.

All returned goods will incur a 25% restocking fee on the total cost of goods.

The following conditions must be met however in order to accept returned goods:

- We have received prior notification by advising our office on 03 9331 6660 or in person
- Original tax invoice must be supplied
- Goods must still be in original condition
- Goods must still be in original packaging
- Customer is responsible for arranging return of goods and all transportation costs involved
- In the circumstance that a credit is issued, we will hold a credit for 30 days

Any goods authorised for return shall be returned at the customer's expense