

EasyLap™ panel



What is it?

A strong fibre cement base sheet with a shiplap vertical joint, it's finished with a site-applied roll-on textured acrylic paint** to create a rendered look with a subtle vertical joint. Lightweight but durable, EasyLap™ panel is the most easily installed and cost-effective broadwall, textured-cladding solution. Pre-primed sheet with a shiplap edge joint along the two long edges.

Where do you use it?

As an external wall cladding in residential single and medium-density homes, including alterations and additions, where a uniform broadwall cladding is required. Ideal for full wrap or composite construction designs on either timber or light gauge steel framed homes.

What are the key benefits?

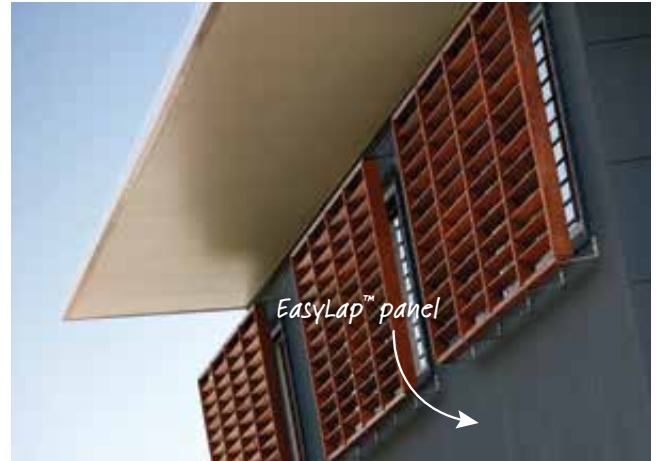
AFFORDABILITY. The roller-applied acrylic texture paint finish** eliminates the need for specialised applicators – only two trades (your carpenter and painter) are needed for the complete installation and there's a clean, dry worksite to boot. Lightweight construction means scaffolds are typically up for less time when compared to masonry construction.

DESIGN FLEXIBILITY. The joint design gives a subtle vertical shadow line while allowing you to create large painted expanses.

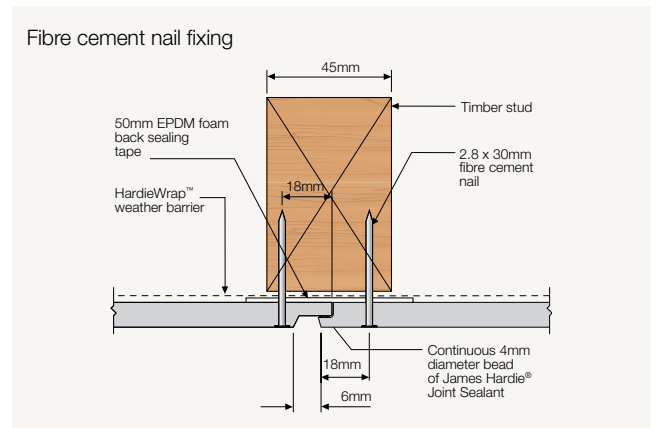
FAST INSTALLATION. The exposed vertical shiplap joint enables fast installation because it eliminates the need for a vertical set joint and control joint. Added to this, the large sheets with off-the-shelf corner finishing details give fast broadwall coverage.

SUSTAINABILITY. When EasyLap panel is used in conjunction with cavity construction and the right insulation (in accordance with James Hardie's Wall System Thermal Performance Total R-Values Technical Supplement), an R-value of up to 3.44 can be achieved for the wall.

SECURITY. Made from thick and solid 8.5mm fibre cement, EasyLap panel is resistant to damage from termites, rot and fire.*



Cutaway showing joint detail



What are the accessories?

Accessory	Code	Page
HardieBlade™ Saw Blade 185mm	300660	51
HardieBlade™ Saw Blade 254mm	303375	51
HardieDrive™ Screws 32mm long	305532	51
HardieDrive™ Screws 40mm long	305533	51
James Hardie™ 9mm Aluminium External Corner	305521	52
James Hardie™ 9mm Aluminium Horizontal h Flashing, 3,000mm long	305613	52
James Hardie™ 9mm Aluminium Horizontal h Jointer	305614	52
James Hardie™ 9mm Aluminium Internal Corner	305520	53
James Hardie™ 75x75mm Colorbond® Corner Flashing	305564	53
James Hardie™ 50mm wide Foam Back Sealing Tape	304560	54
James Hardie™ Joint Sealant^ 300ml cartridge	305534	54
James Hardie™ Joint Sealant^ 600ml sausage	305672	54

What are the sizes?

Product code	Length (mm)	Width (mm)	Thickness (mm)	Mass (kg/m ²)
404186	3,000	900	8.5	12.46
404184	2,440	1,200	8.5	12.46
404185	3,000	1,200	8.5	12.46

Selling units per pack: 40 sheets

Note All dimensions and masses provided are approximate only and subject to manufacturing tolerances. Masses are based on equilibrium moisture content of product.
 * When installed and maintained correctly and to the extent set out in James Hardie's published literature current at the time of installation. ^ Not to be used in fire applications.
 ** James Hardie recommends the following product for use in conjunction with the EasyLap™ panels. James Hardie® does not supply these products. Please contact the components manufacturer for information on their warranties and further information on their products.