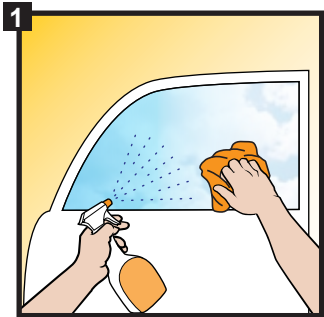


Installation Instructions

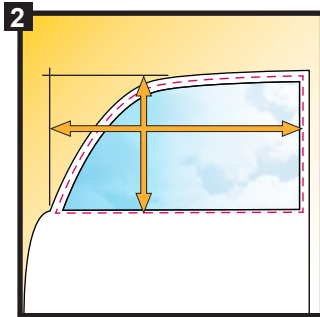


Tools Required

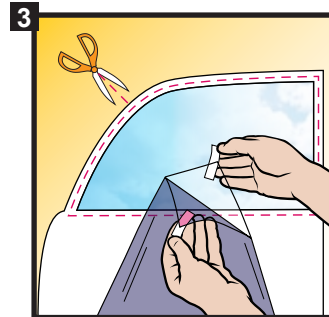
- Spray Bottle
- Application Solution
(2% baby shampoo in filtered water)
- Squeegee/Applicator
- Craft Knife
- Lint-free Cloth
- Straight Edge
- Measuring Tape



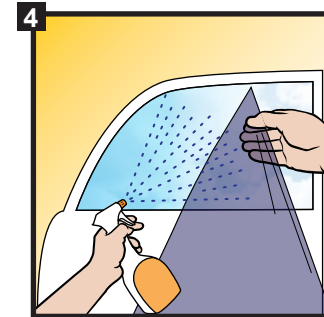
1 Thoroughly clean glass to remove all dirt and debris using an ammonia-free cleaner & lint-free cloth.



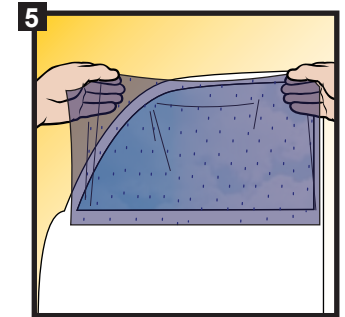
2 Measure the glass area to cover and trace stencil on paper for accuracy when cutting window tint.



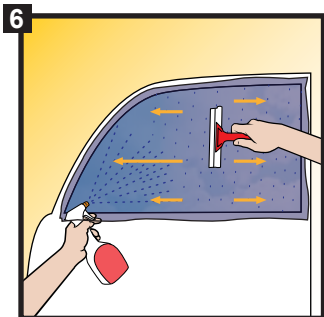
3 On a clean flat surface, cut film 20mm wider than stencil along all sides. For large curved windows, cut film into strips to avoid wrinkles. Slowly peel away tint backing.



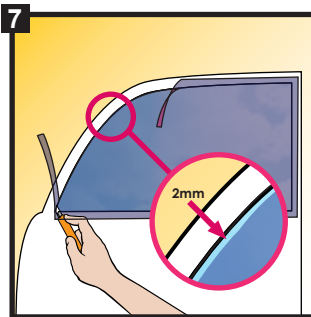
4 Apply a generous amount of Spray Solution to glass and **both** sides of film to allow for easy installation.



5 Place adhesive side of film on glass and gently manoeuvre into position. Smooth out using hands.



6 Apply more Solution Spray for lubrication and starting from centre, use Applicator to work out bubbles to edges.



7 Trim excess tint leaving a 2mm gap for any water residue to escape. Re-spray and work out any remaining bubbles.

DO NOT OPERATE WINDOWS FOR AT LEAST 48 HOURS

**DO NOT OPERATE
WINDOWS FOR AT
LEAST 48 HOURS**

Do not apply where prohibited by law, check State Laws for the legality of this product in your area.

Only apply to inside of windows (between 15-25°C).

Do not apply to front windscreens or over wire defrosters.

Apply in a shaded area free from wind and dust.