

RYOBI[®]

RBC254SSEON

ORIGINAL INSTRUCTIONS

Petrol Brushcutter



Important!

It is essential that you read the instructions in this manual before assembling, operating, and maintaining the product.

Subject to technical modification.

Safety, performance, and dependability have been given top priority in the design of your brushcutter.

INTENDED USE

The brushcutter is intended to be used only by adults who have read and understood the instructions and warnings in this manual and can be considered responsible for their actions. The product is only intended for use outdoors in a well-ventilated area. For safety reasons, the product must be adequately controlled by a two-handed operation.

The product fitted with the TRI-ARC blade (and appropriate guard), can cut bushes. The product is not designed to be fitted with a saw blade.

The cutting plane should be approximately parallel to the ground surface. The product should not be used to cut or trim hedges, bushes, or other vegetation where the cutting plane is not parallel to the ground surface.

Do not use the product for any other purpose.

WARNING

To reduce the risk of injury, the user must read and understand the operator's manual.

WARNING

Do not attempt to operate the product until you have read thoroughly and understood completely all instructions and safety rules contained in this manual. Failure to comply may result in accidents involving fire, electric shock, or serious personal injury. Save the operator's manual and review frequently for continuing safe operation, and instructing others who may use the product.

WARNING

The product is not intended to be used by children or persons with reduced physical, mental, or sensory capabilities. Children should be adequately supervised to ensure they do not play with the product.

GENERAL SAFETY WARNINGS

- For safe operation, read and understand all instructions before using the product. Follow all safety instructions. Failure to follow all safety instructions listed below, can result in serious personal injury.
- Some regions have regulations that restrict the use of the product. Check with your local authority for advice.
- Do not allow children or untrained individuals to use the product.
- Do not start or run the engine in a closed or poorly ventilated area; breathing exhaust fumes can kill.
- Clear the work area before each use. Remove all objects such as rocks, broken glass, nails, wire, or string, which can be thrown or become entangled in the blade.
- Wear full eye and hearing protection while using the product. If working in an area where there is a risk of falling objects, head protection must be worn.

- Hearing protection may restrict the operator's ability to hear warning sounds. Pay particular attention to potential hazards around and inside the working area.
- Wear heavy, long trousers, non-slip protective footwear and gloves. Do not wear loose fitting clothing, short trousers, jewellery of any kind, or use with bare feet.
- Secure long hair so it is above shoulder level to prevent entanglement in any moving parts.
- Keep all bystanders, children, and pets at least 15 m away. Stop the product if anyone enters the area.
- Do not use the product when you are tired, ill, or under the influence of alcohol, drugs, or medication.
- Do not use in poor lighting. The operator needs clear unrestricted vision to identify potential hazards.
- Keep firm footing and balance at all times. Do not overreach. Overreaching can result in loss of balance or exposure to hot surfaces.
- Keep all parts of your body away from any moving part.
- Do not touch area around the silencer or cylinder of the product, these parts get hot from operation.
- Always stop the engine and allow it to cool down before making any adjustments.
- Do not smoke when mixing fuel or filling fuel tank.
- Mix and store fuel in a container approved for fuel.
- Mix fuel outdoors where there are no sparks or flames. Wipe up any fuel spillage. Move 9 m away from refueling site before starting engine.
- Stop the engine and allow to cool down before refueling or storing the product.
- Allow the engine to cool down; empty the fuel tank and secure the product from moving before transporting in a vehicle.
- Always stop the engine. Make sure all moving parts have come to a complete stop:
 - before servicing
 - before leaving the product unattended
 - before clearing a blockage
 - before checking, cleaning, and working on the product
 - before changing accessories
 - before removing the blade
 - before installing the blade
 - after striking a foreign object
 - whenever performing maintenance
 - whenever the product starts to vibrate abnormally

WARNING

Do not use cutting means or attachments, which are not specified by RYOBI in this manual. This includes the use of metal multi-piece pivoting chains and flail-blades. These items are known to break up during use and present a high risk of serious injury to the operator or bystanders.

WARNING

Inspection after dropping or other impacts: Thoroughly inspect the product and identify any problems or damage to it. Any part that is damaged should be properly repaired or replaced by an authorised service centre.

BRUSHCUTTER SAFETY WARNINGS

- Be sure the blade is properly installed and securely fastened. Failure to do so can cause serious injury.
- Do not walk backwards when using the product.
- Walk, never run.
- Always ensure that ventilation openings are kept clear of debris.
- Before each use and after any impact, check that there are no damaged parts. Examine the cutting means for signs of cracking or other damage. A defective switch or any part that is damaged should be properly repaired or replaced by an authorised service centre.
- Do not modify the product in any way. This may increase the risk of injury to yourself or others.
- Never operate the product without the cutting attachment guard in place and in good condition.
- Use heavy-duty gloves while installing or removing the blades, they have sharp edges.
- Do not attempt to touch or stop the blade when it is rotating.
- A moving blade can cause severe injury. Maintain proper control of the product with both hands until the blade has completely stopped rotating.
- Replace any blade that has been damaged. Always make sure the blade is installed correctly and securely fastened before each use.
- Use only the manufacturer's replacement TRI-ARC blade. Do not use any other cutting attachment.
- Never cut any material over 13 mm diameter.
- Your brushcutter is fitted with a harness. Carefully adjust the harness to fit comfortably and help to support the weight of the product at your right side.
- Identify the quick release mechanism and practice using it before you start using the product. Its correct use may prevent serious injury in case of an emergency. Never wear additional clothing over the harness or otherwise restrict access to the quick release mechanism.
- Cover the blade with the blade protector before storing the product, or during transportation. Always remove the blade protector before using the product. If not removed, the blade protector could become a thrown object as the blade begins to turn.
- Exercise extreme caution when using the blade with the product. Blade thrust is the reaction that may occur when the spinning blade contacts anything it cannot cut. This contact may cause the blade to stop for an instant, and suddenly "thrust" the product away from the object that was hit. This reaction can be violent enough to cause the operator to lose control of the product. Blade thrust may occur without warning if the blade snags, stalls, or binds. This is more likely to occur in

areas where it is difficult to see the material being cut.

- For cutting ease and safety, approach the weeds being cut from the right to the left. In the event an unexpected object or woody stock is encountered, this practice could minimise the blade thrust reaction. Both hands must be used at all times to control the product.

TRANSPORTATION AND STORAGE

- Stop the engine and allow it to cool down before storing or transporting.
- Clean all foreign materials from the product.
- Cover the blade with the blade protector.
- Drain all fuel from tank into a container approved for petrol. Remember to properly replace and tighten the fuel cap.
- Run the engine until it stops, this will remove all fuel that could become stale and leave varnish and gum in the fuel system.
- Store the product in a cool, dry, and well-ventilated place that is inaccessible to children. Keep away from corrosive agents, such as garden chemicals and de-icing salts. Do not store outdoors.
- When transporting the product in a vehicle, secure it against movement or falling to prevent injury to persons or damage to the product.
- Never carry or transport the product while the engine is running.
- Abide all government and local regulations for the safety storage and handling of petrol. Excess fuel should be used in other 2-cycle engine powered equipment.

SHORT TERM

- Stop the engine, and allow it to cool down before storing.
- Clean all foreign material from the product.
- Store the product in a cool, dry, and well-ventilated place that is inaccessible to children.
- Keep away from corrosive agents such as garden chemicals and de-icing salts.
- Do not store outdoors.

MAINTENANCE

WARNING

Use only original manufacturer's replacement parts, accessories, and attachments. Failure to do so can cause possible injury, poor performance, and may void your warranty.

WARNING

The cutting attachment must not rotate in idle mode. If this requirement is not satisfied, the clutch has to be adjusted or the product needs an urgent maintenance by a qualified technician.

WARNING

A leaking fuel cap is a fire hazard and must be replaced immediately.

WARNING

Note that the blade nut is a NYLOC nut, which is to be used for one time assembly only. Do not reuse the NYLOC nut. When installing/reinstalling, use a new NYLOC nut. Failure to follow this procedure can result in serious injury.

WARNING

Make sure that the nut torque is ≥ 25 Nm when assembling the blade. Failure to follow this procedure can result in serious injury.

- Always stop the engine and allow it to cool down before making any maintenance.
- You may make adjustments and repairs described in this manual. For other repairs, have the product serviced by an authorised service centre.
- Consequences of improper maintenance may include excess carbon deposits resulting in loss of performance and discharge of black lubricant residue dripping from the muffler.
- Make sure all guards, straps, deflectors and handles are properly and securely attached to avoid the risk of personal injury.

RESIDUAL RISKS

Even when the product is used as prescribed, it is still impossible to completely eliminate certain residual risk factors. The following hazards may arise in use and the operator should pay special attention to avoid the following:

- Contact with cutting means
 - Ensure that the blade protectors are fitted when the product is not in use. Keep hands and feet away from the blades at all times.
- Injury caused by vibration
 - Always use the right tool for the job, use designated handles, and restrict working time and exposure.
- Hearing injury caused by exposure to noise
 - Wear hearing protection and limit exposure.
- Eye injury caused by flying debris
 - Wear eye protection at all times.
- Risk of falling objects
 - Wear head protection if there is any risk of falling objects.

Kickback can occur when using the brushcutter. Ensure proper control by using both hands on the designated handles. Read and follow the directions elsewhere in this manual to help reduce the risk of kickback.

RISK REDUCTION

It has been reported that vibrations from handheld tools may contribute to a condition called Raynaud's Syndrome.

Symptoms may include tingling, numbness and blanching of the fingers, usually apparent upon exposure to cold. Hereditary factors, exposure to cold and dampness, diet, smoking and work practices are all thought to contribute to the development of these symptoms. There are measures that can be taken by the operator to possibly reduce the effects of vibration:

- Keep your body warm in cold weather. When operating the product, wear gloves to keep the hands and wrists warm. It is reported that cold weather is a major factor contributing to Reynaud's Syndrome.
- After each period of operation, exercise to increase blood circulation.
- Ensure that the product is correctly located in a designated working position before operating the product.
- Limit the amount of exposure per day. Take frequent work breaks.

If you experience any of the symptoms of this condition, immediately discontinue use and see your physician.

WARNING

Injuries may be caused, or aggravated, by prolonged use of a tool. When using any tool for prolonged periods, ensure you take regular breaks.

SYMBOLS ON THE PRODUCT



Safety alert



Read and understand all instructions before operating the product, follow all warnings and safety instructions.



Wear eye, ear, and head protection.



Wear non-slip safety footwear when using the product.



Wear non-slip, heavy-duty gloves.



Beware of thrown or flying objects. Keep all bystanders, especially children and pets, at least 15 m away from the operating area.



The product is not intended for use with a toothed saw type blade.



To reduce the risk of injury or damage, avoid contact with any hot surface.



Guaranteed sound power level



Sound pressure level at idle



Run position



Set the choke lever to "Full" position.



Set the choke lever to "Half" position.



Waiting time: 10 seconds



PRIME - press the primer bulb 10 times slowly.



Pull the starter rope



Squeeze throttle trigger to start / run.



Use unleaded petrol intended for motor vehicle use with an octane rating of 91((R+M)/2) or higher.



Use 2-stroke lubricant for air cooled engines.



Mix the fuel mix thoroughly and also each time before refueling.



Starting a cold engine by hand



Starting a warm engine by hand



Starting a cold engine by electrical starter



Starting a warm engine by electrical starter



TRI-ARC blade is appropriate for the product and is suited for cutting pulpy weeds and vines.



Beware of blade thrust



Rotational direction and maximum speed of the shaft for the cutting attachment.



Pull: Quick release tab



Regulatory Compliance Mark (RCM). Product meets applicable regulatory requirements.

The following signal words and meanings are intended to explain the levels of risk associated with this product.

⚠ DANGER

Indicates an imminently hazardous situation, which, if not avoided, will result in death or serious injury.

⚠ WARNING

Indicates a potentially hazardous situation, which, if not avoided, could result in death or serious injury.

⚠ CAUTION

Indicates a potentially hazardous situation, which, if not avoided, may result in minor or moderate injury.

CAUTION

Without safety alert symbol

Indicates a situation that may result in property damage.

SYMBOLS IN THIS MANUAL

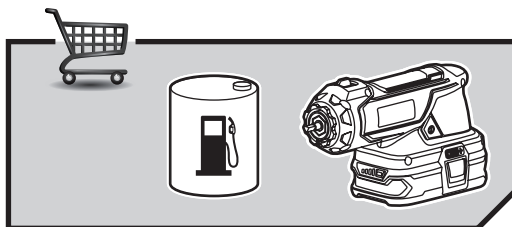
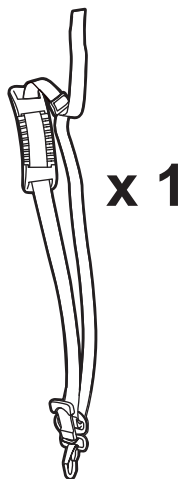
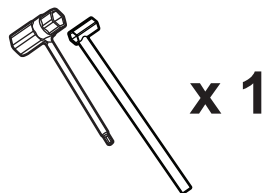
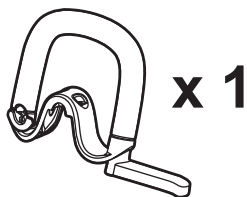
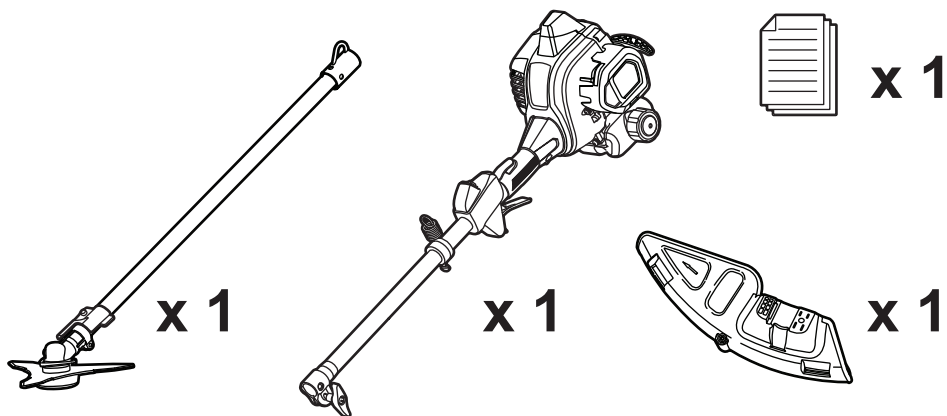


Note



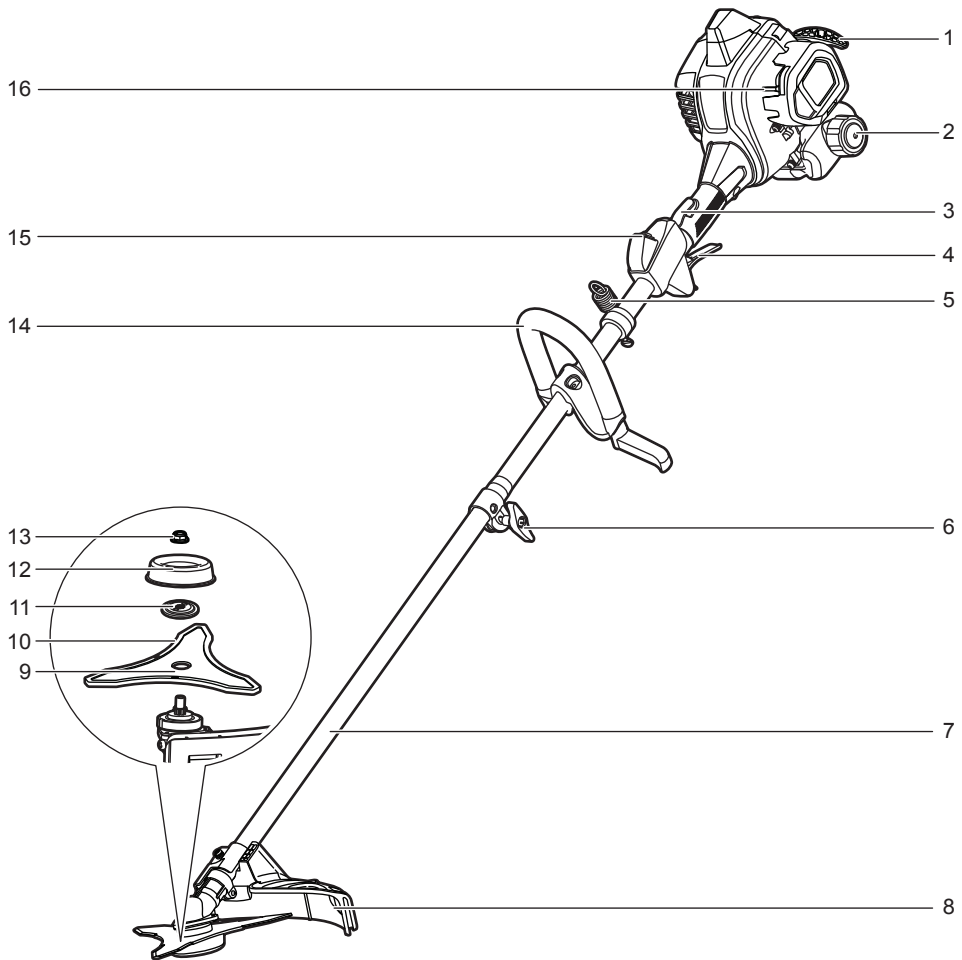
Warning

UNPACKING

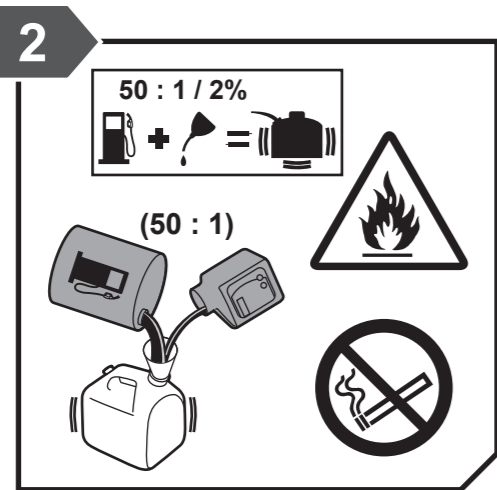
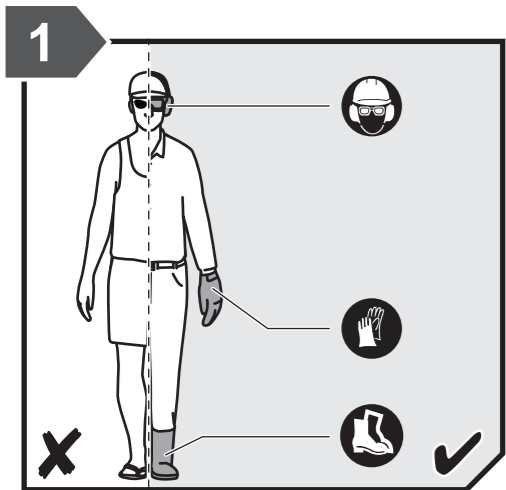


KNOW YOUR PRODUCT

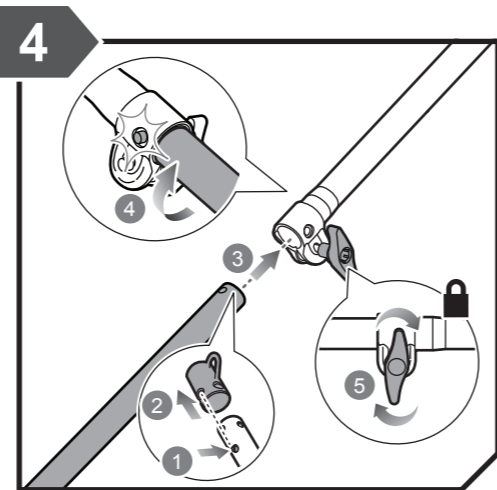
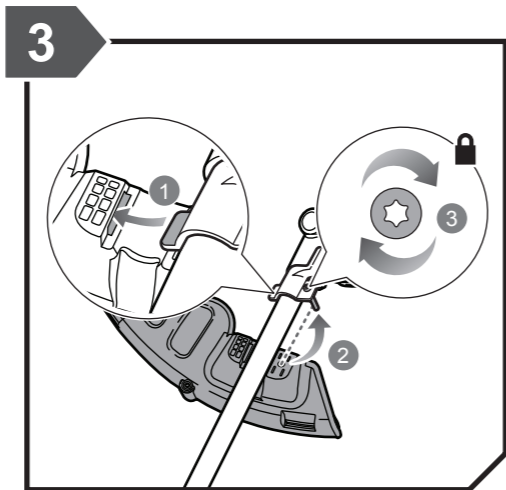
1. Starter grip
2. Fuel cap
3. Trigger lock
4. Throttle trigger
5. Strap hanger
6. Shaft coupling
7. Lower shaft
8. Blade guard
9. TRI-ARC blade
10. Blade protector
11. Blade washer
12. Cupped washer
13. NYLOC nut
14. Front handle
15. Switch button
16. Choke lever



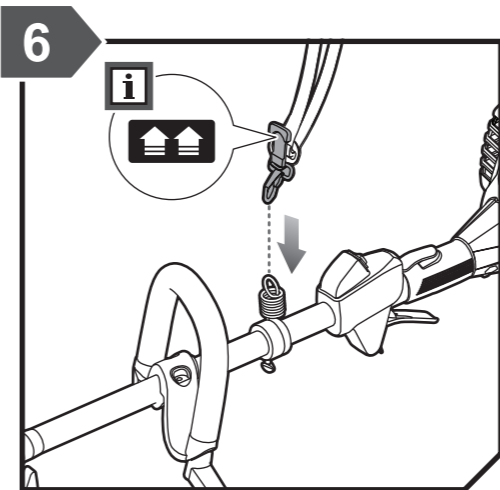
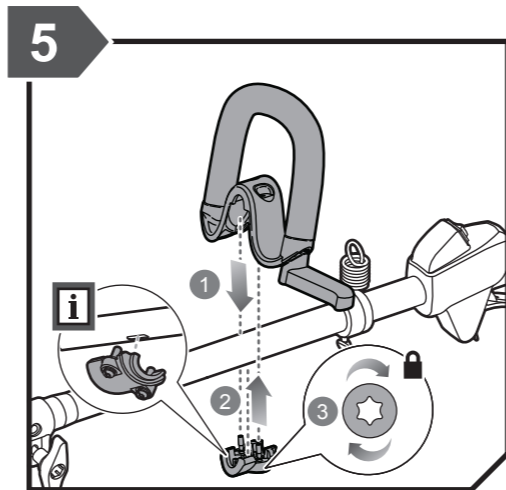
GETTING STARTED



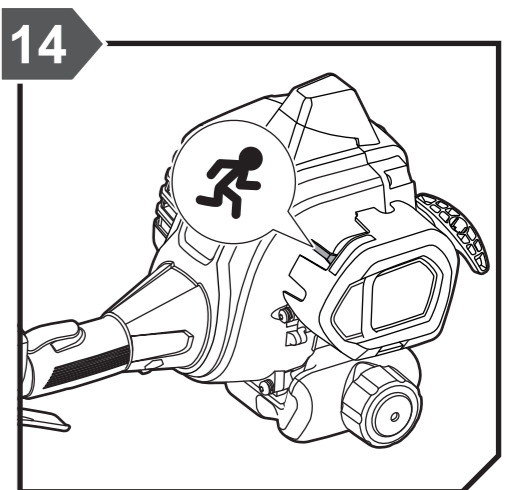
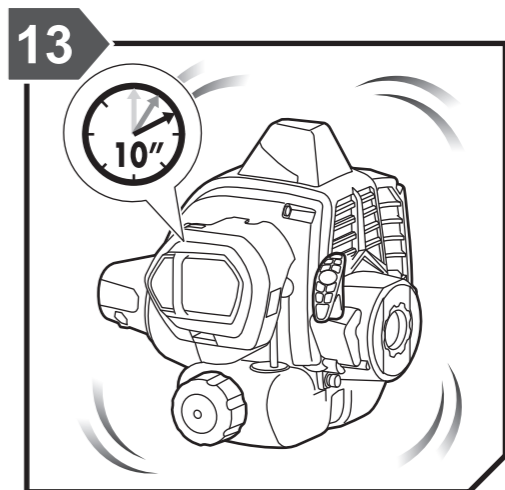
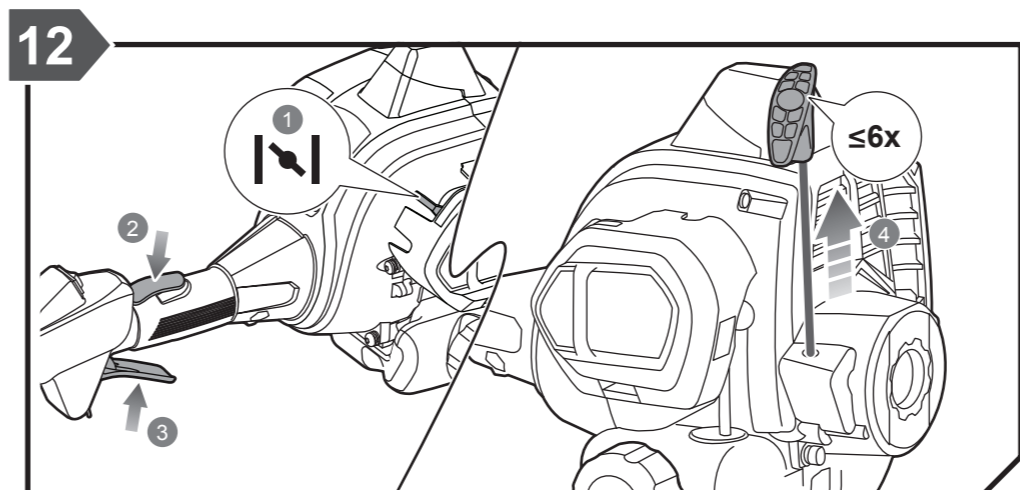
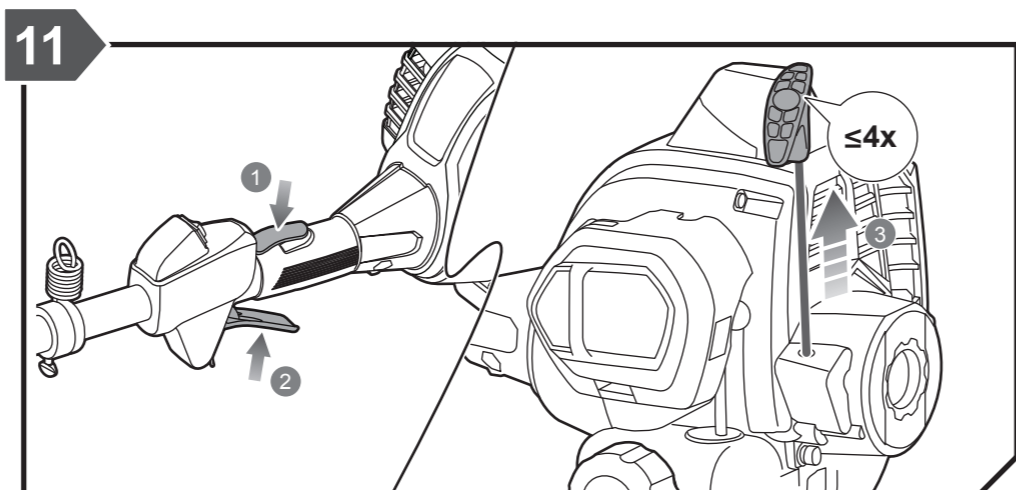
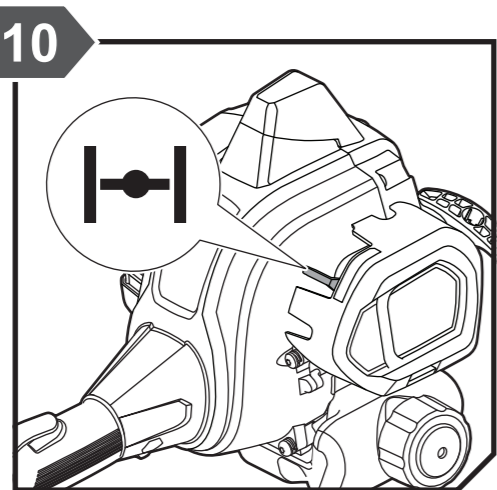
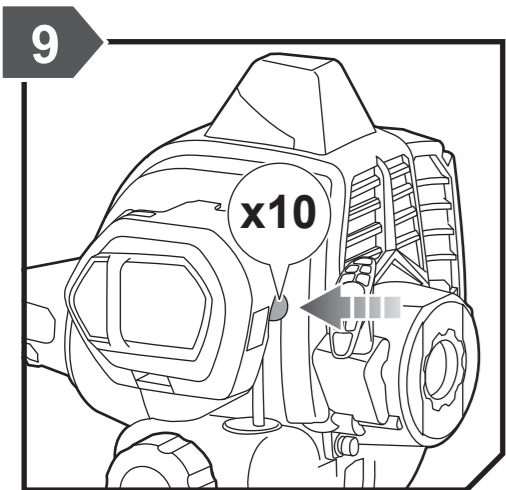
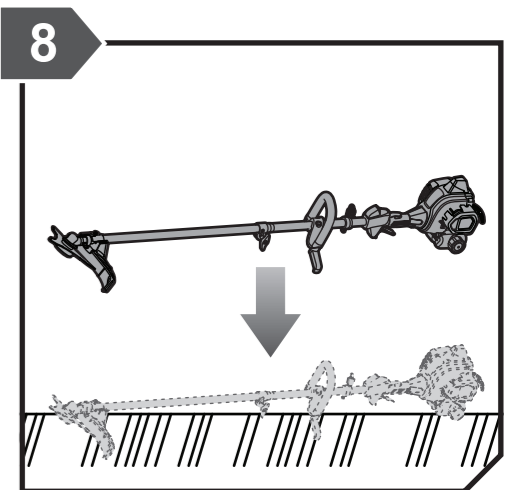
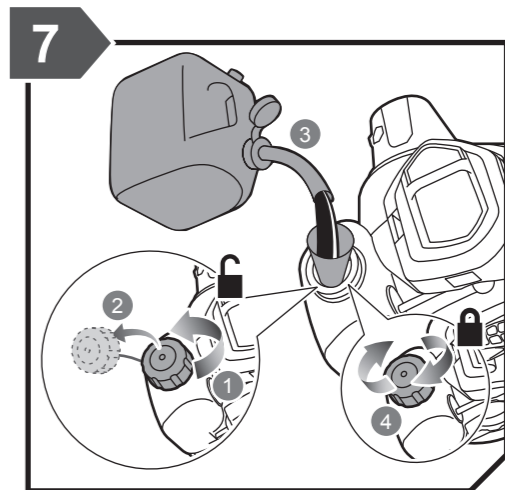
GETTING STARTED



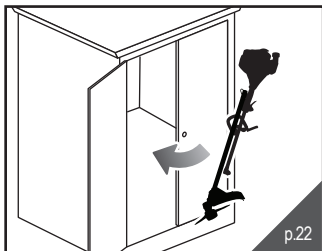
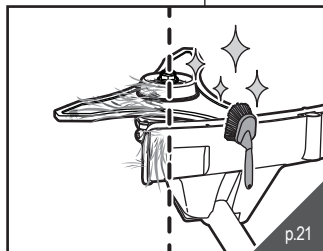
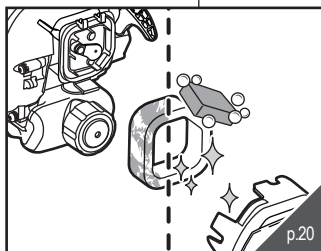
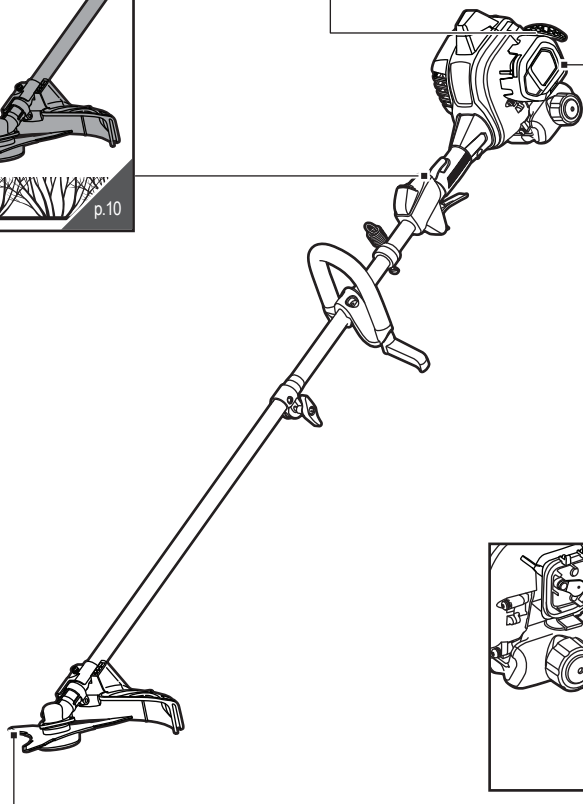
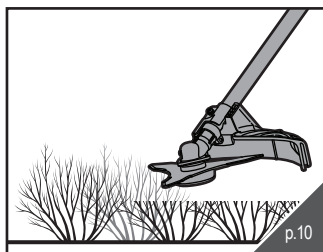
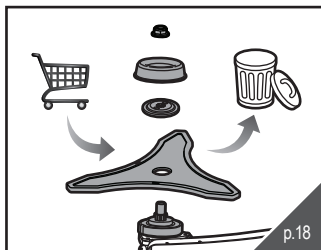
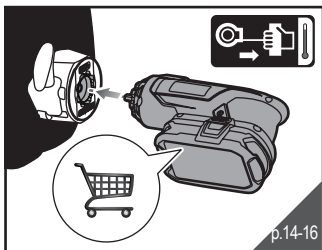
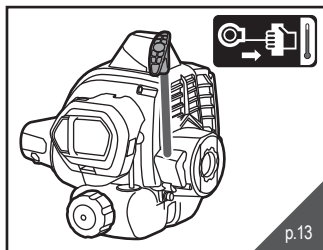
GETTING STARTED



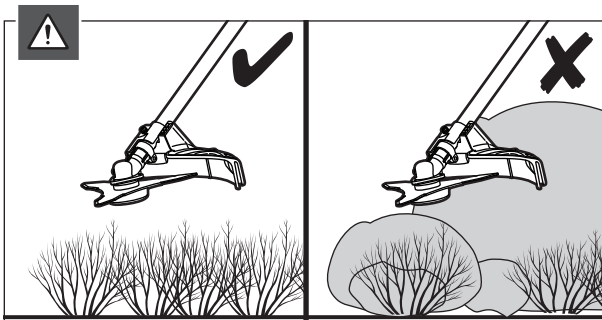
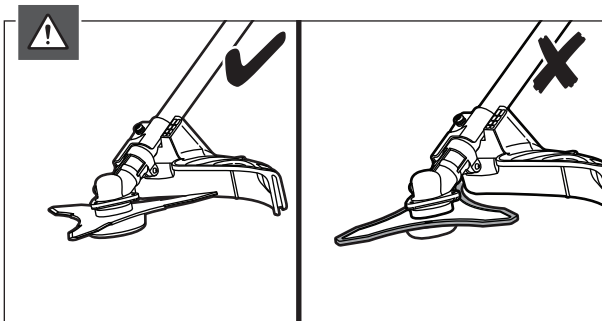
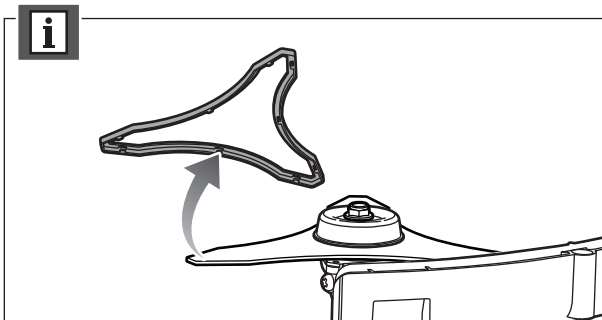
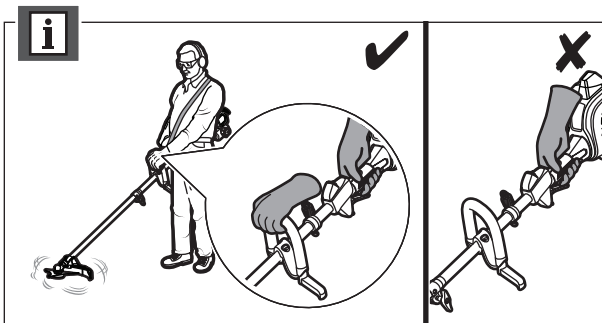
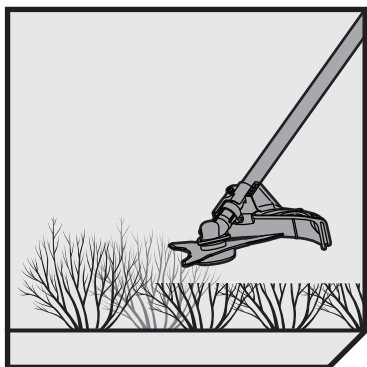
GETTING STARTED



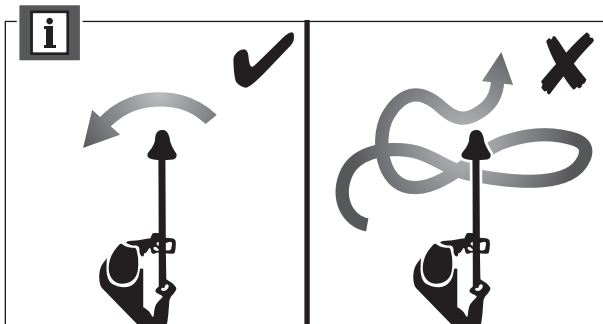
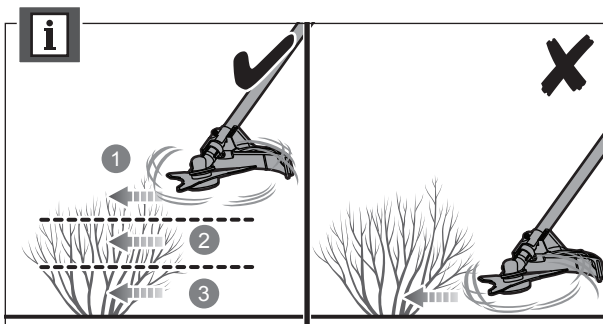
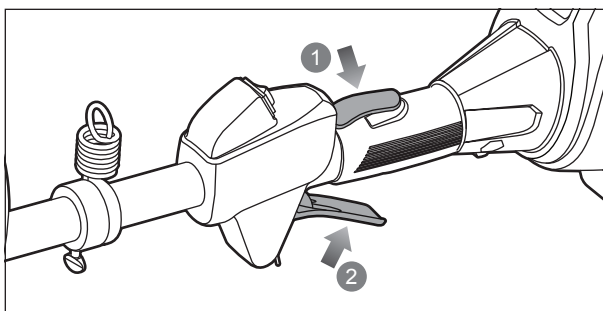
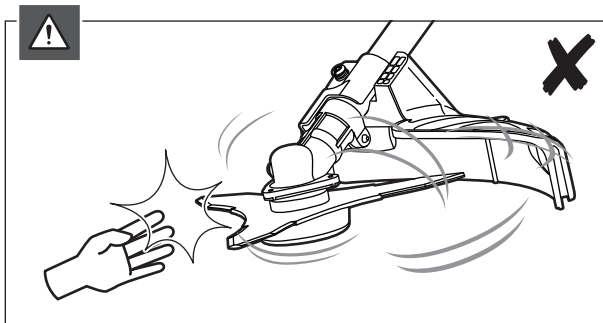
OVERVIEW



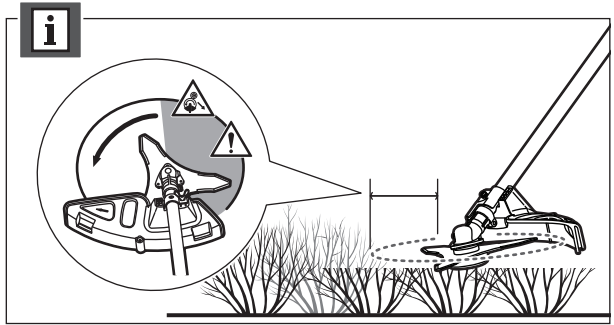
OPERATION



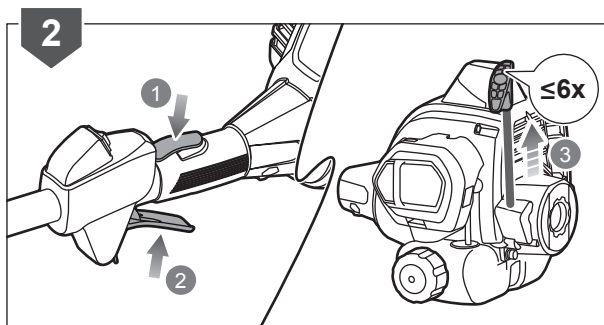
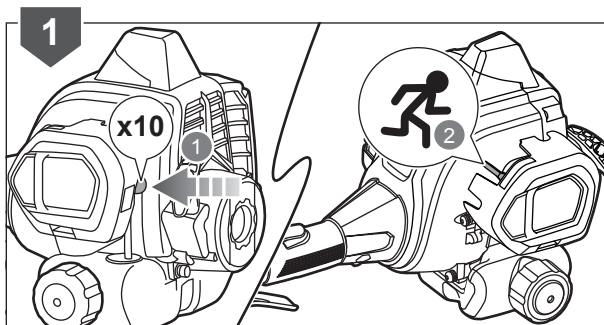
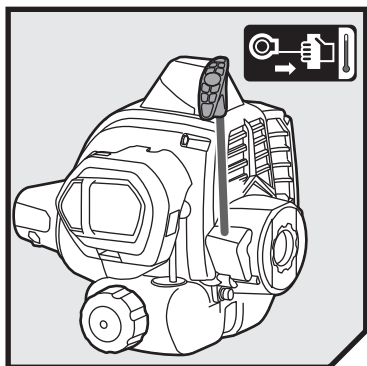
OPERATION



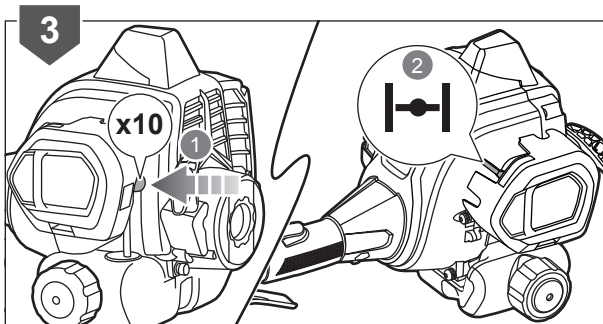
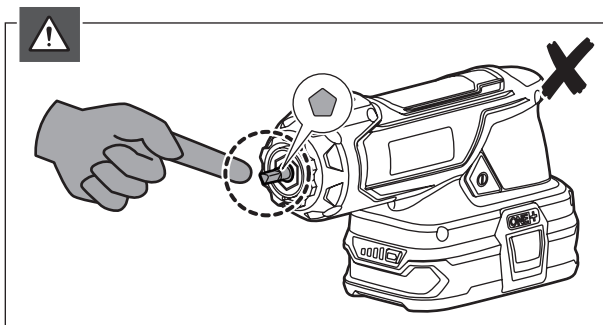
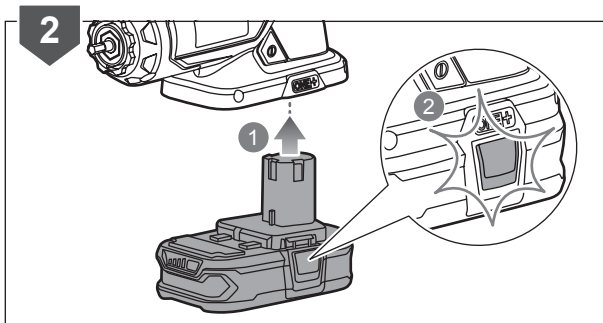
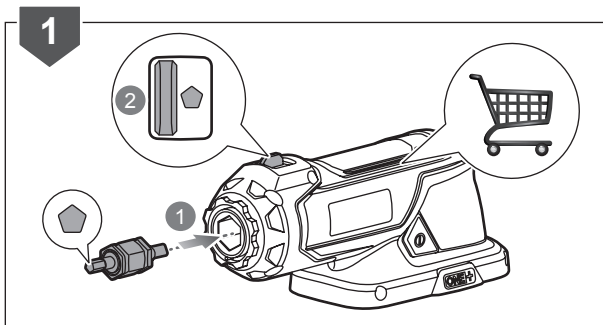
OPERATION



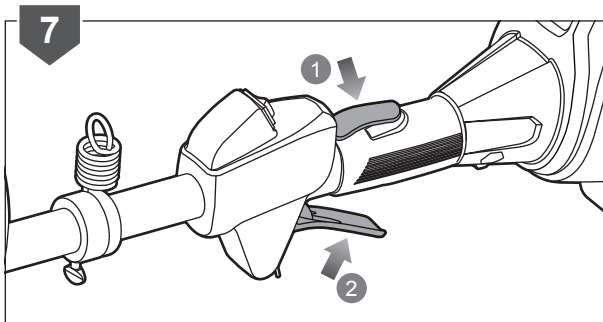
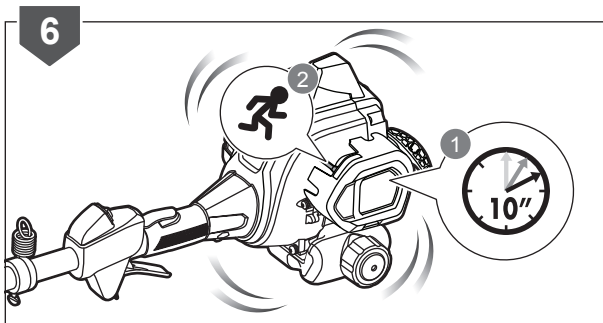
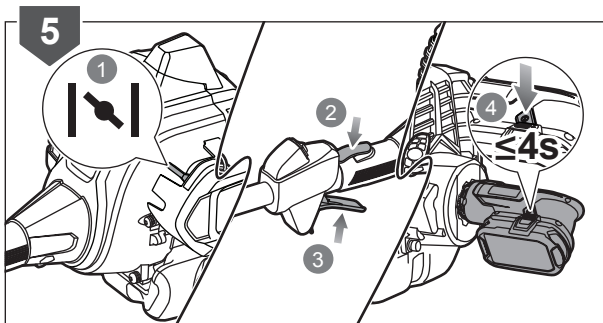
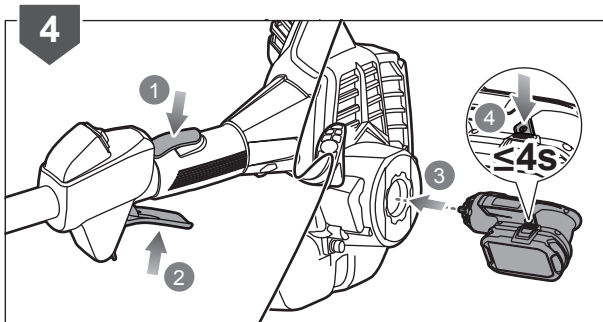
OPERATION



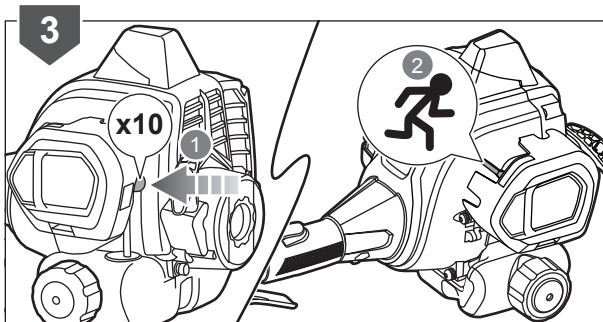
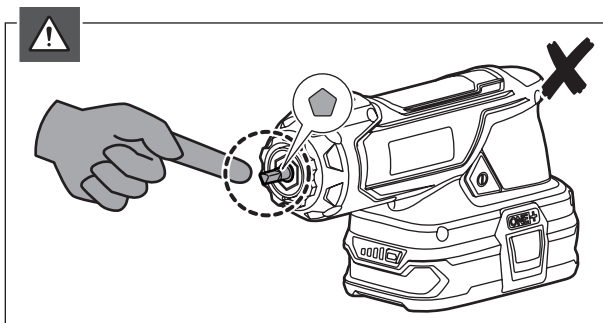
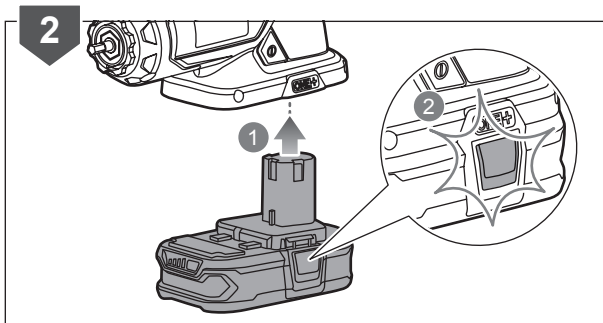
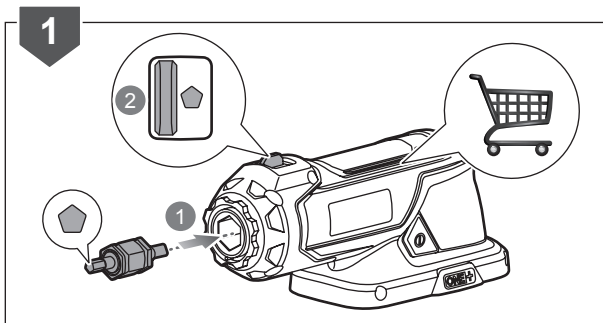
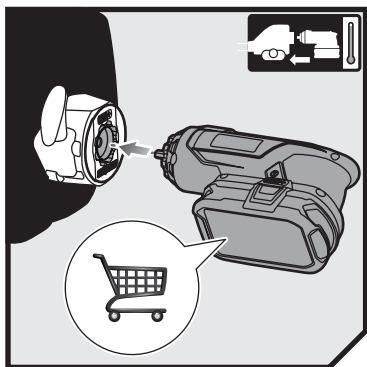
OPERATION



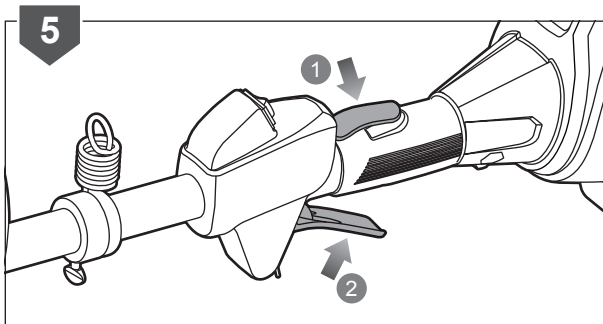
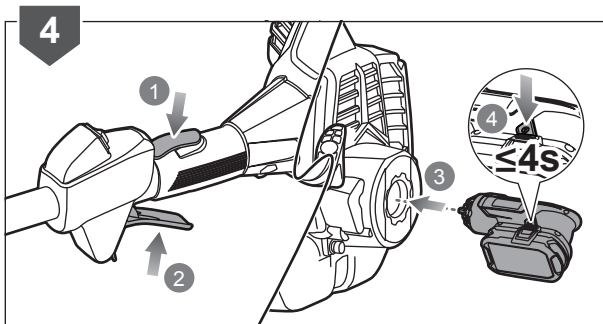
OPERATION



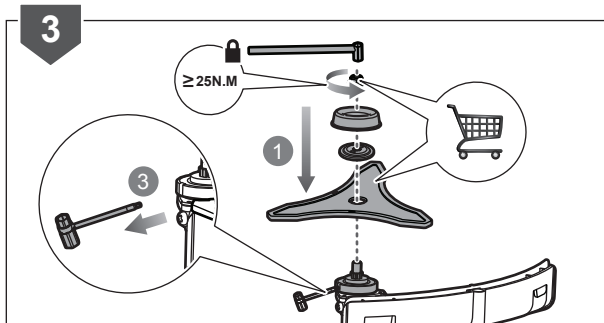
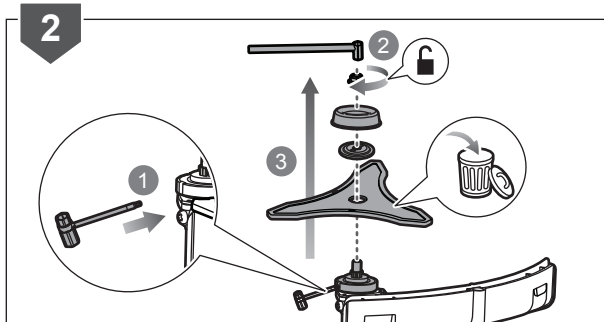
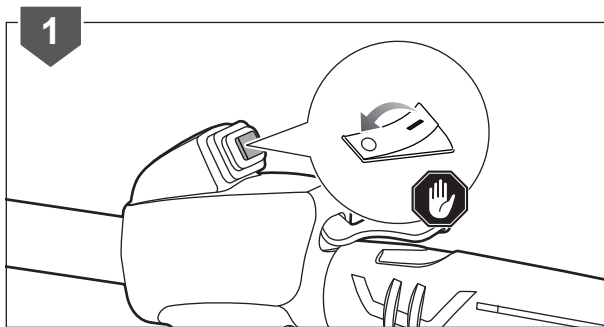
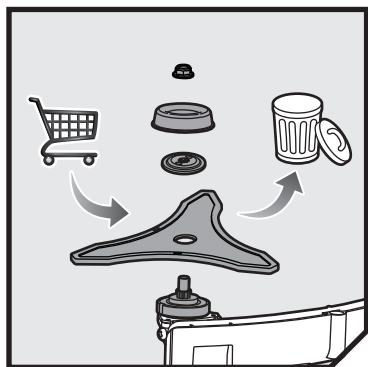
OPERATION



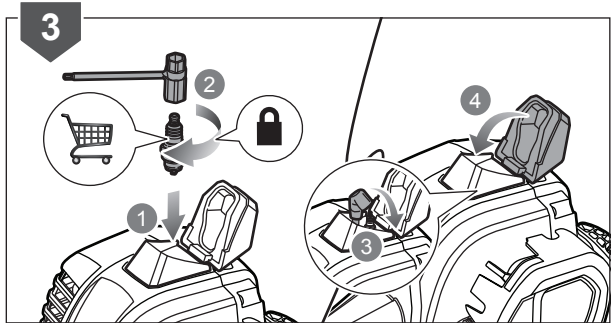
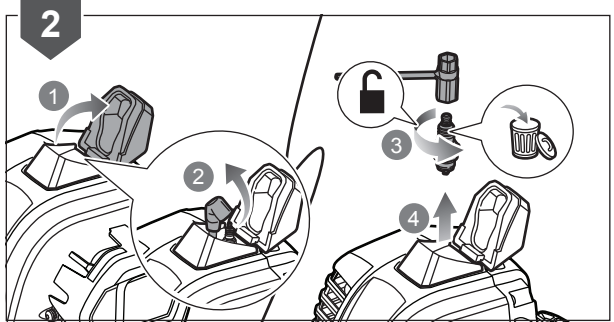
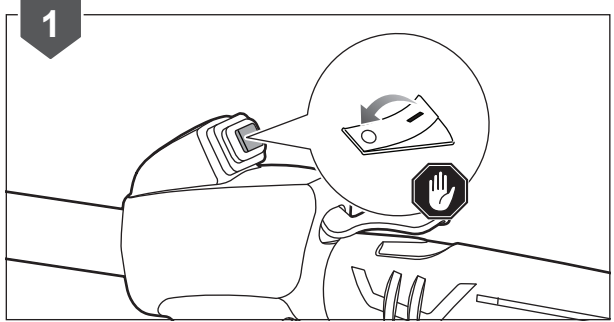
OPERATION



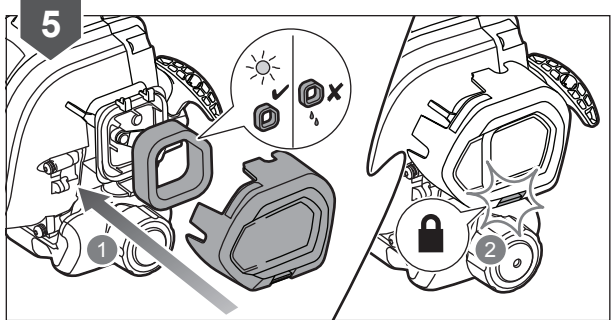
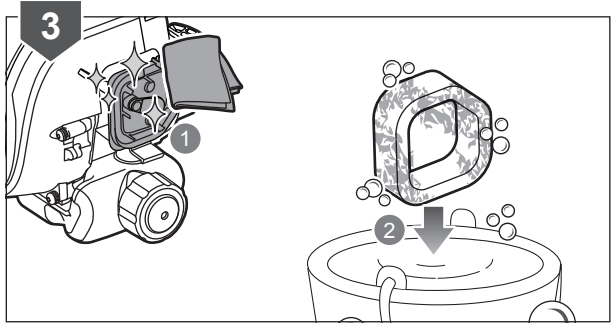
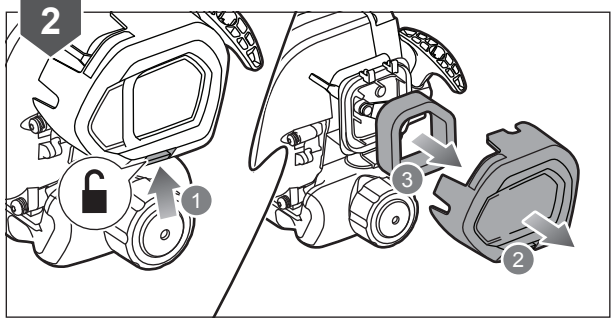
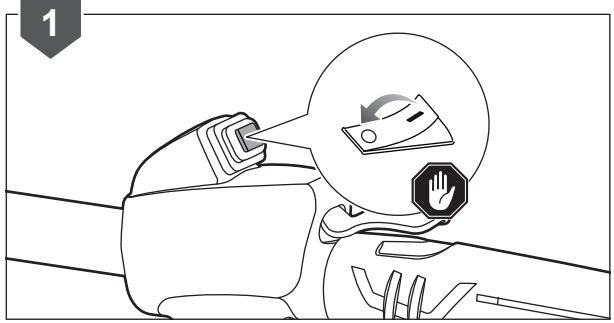
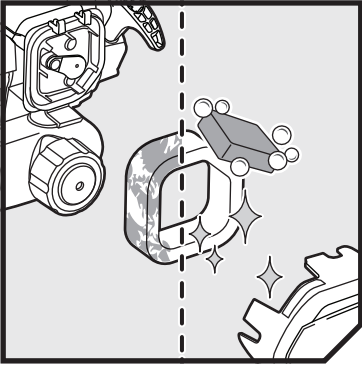
MAINTENANCE



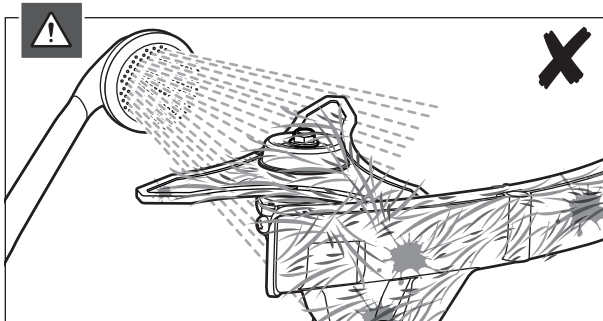
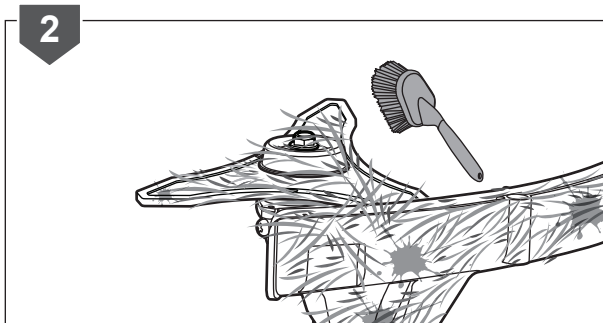
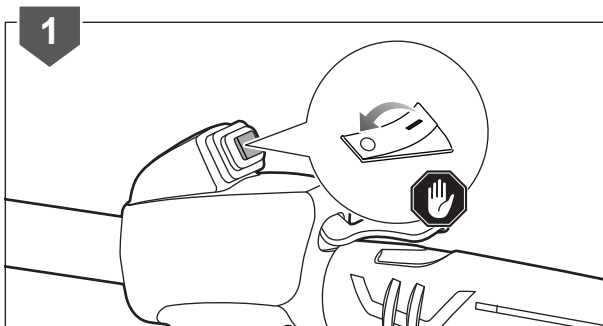
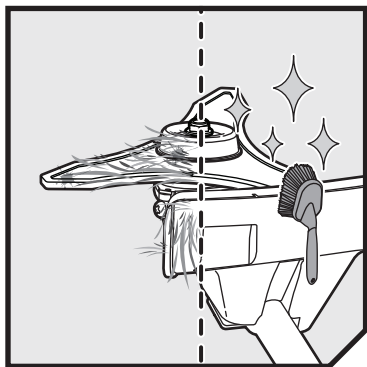
MAINTENANCE



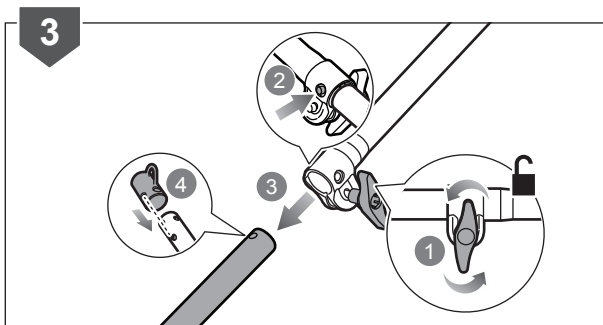
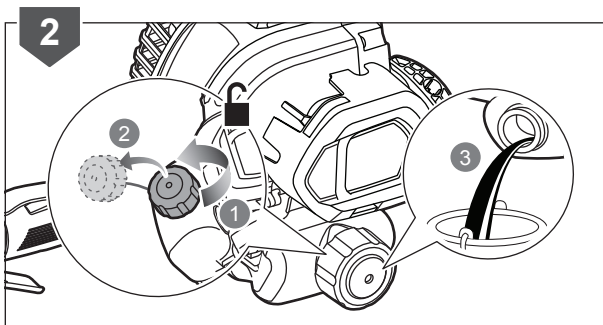
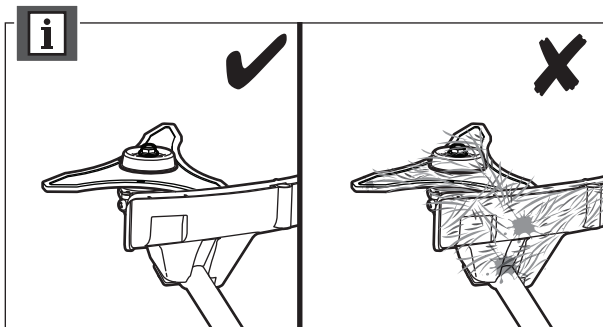
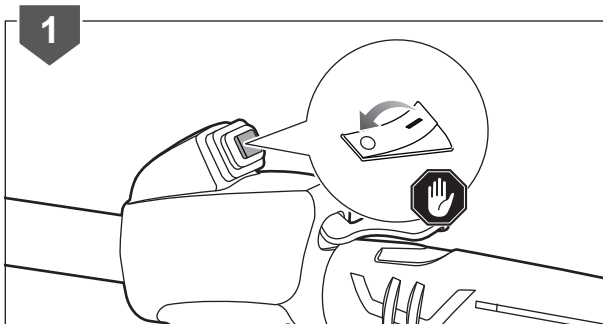
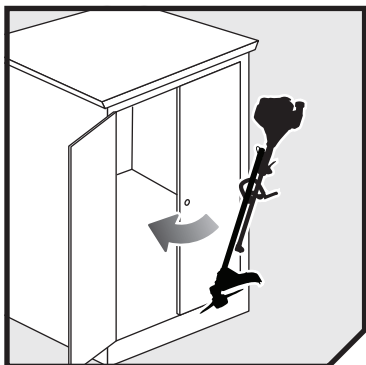
MAINTENANCE



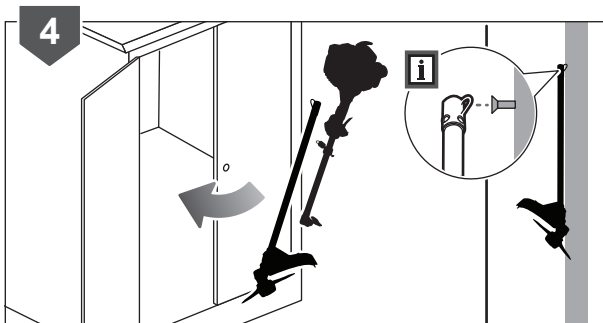
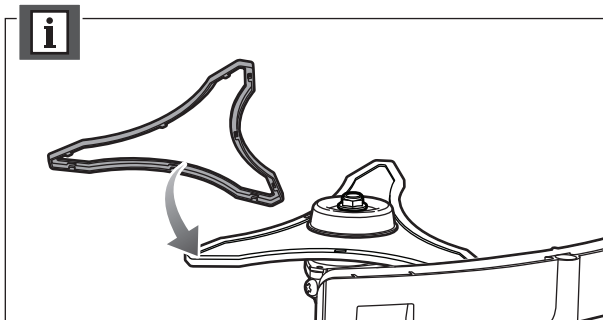
MAINTENANCE



STORAGE


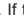



STORAGE



TROUBLESHOOTING

IF THESE SOLUTIONS DO NOT SOLVE THE PROBLEM, CONTACT AN AUTHORISED SERVICE CENTRE.

PROBLEM	POSSIBLE CAUSE	SOLUTION
Engine will not start	No spark	The spark plug may be damaged. Remove it and check for dirt and cracks. Replace with a new spark plug.
	No fuel	Push the primer bulb until the bulb is full of fuel. If bulb does not fill, the primary fuel delivery system is blocked. Contact an authorised service centre. If the primer bulb fills, the engine may be flooded. Proceed to the next item.
	Engine is flooded	Remove the spark plug. Turn the product so the spark plug hole is aimed at the ground. Rotate the choke dial to "  " position and then pull the starter cord 10 to 15 times. This will clear the excess fuel from the engine. Remove any fuel splashed on the product. Clean and reinstall the spark plug. Clean any spilled fuel and move at least 9 m away before restarting. Pull the starter three times with choke dial at "  ". If the engine does not start, rotate the choke dial to "  " position and then repeat the normal starting procedure. If the engine still fails to start, repeat the procedure with a new spark plug.
	Starter rope is harder to pull	Contact an authorised service centre.
	Old fuel	Only use fresh fuel mixed with recommended oil. Fuel over 30 days old may prevent the product from starting.
Engine starts but will not accelerate	Engine requires approximately three minutes to warm up	Allow the engine to completely warm up. If engine does not accelerate after three minutes, contact an authorised service centre.
Engine starts but will only run at high speed at half choke	Carburetor requires adjustment	Contact an authorised service centre.
Engine does not reach full speed and emits excessive smoke	Check the lubricant fuel mixture	Use fresh fuel and the correct 2-stroke lubricant mix.
	Air filter is dirty	Clean air filter.
	Spark arrestor screen is dirty	Contact an authorised service centre.
Engine starts, runs, and accelerates but will not idle	Idle speed screw on carburetor requires adjustment	Contact an authorised service centre.
Lubricant drips from muffler	Operating the product at part throttle	Operate the product at full throttle.
	Lubricant/fuel mixture is dirty	Use fresh fuel and correct synthetic 2-stroke lubricant mix.
	Air filter is dirty	Clean the air filter

PRODUCT SPECIFICATIONS

Brushcutter

Model RBC254SSEON

Weight

Without fuel, cutting attachment and harness 5.27 kg

Without fuel, with blade and harness 5.95 kg

Fuel tank volume 580 cm³

Cutting swath

Blade 256 mm

Recommended torque for blade ≥ 25 N.m

Engine displacement 25.4 cm³

Maximum engine performance (in accordance with ISO 8893) 0.85 kW

Maximum rotational frequency of the spindle 10,000 min⁻¹

Engine speed (rotational frequency) at idle 2,600 - 3,400 min⁻¹

Fuel consumption (in accordance with ISO 8893) at max. engine performance 0.46 kg/h

Specific fuel consumption (in accordance with ISO 8893) at max. engine performance 0.54 kg/kw.h

Vibration level (in accordance with ISO 22867)

Front handle

Idling 5.7 m/s²

Racing 8.0 m/s²

Equivalent vibration total value 7.0 m/s²

Rear handle

Idling 5.3 m/s²

Racing 12.7 m/s²

Equivalent vibration total value 9.8 m/s²

Uncertainty 1.5 m/s²

Noise emission level (in accordance with ISO 22868)

A-weighted emission sound pressure level at the operator's position

Idling 73.6 dB(A)²

Racing 92.4 dB(A)

Equivalent 89.5 dB(A)

A-weighted emission sound power level

Idling 82.1 dB(A)

Racing 101.8 dB(A)

Equivalent 101.8 dB(A)

Uncertainty 2.5 dB

Spark plug Champion RCJ6Y

REPLACEMENT PART

Part	Accessory number	Part number
2 mm TRI-ARC blade	PWFBB01	638006011
M8 nut	-	662450001
Cutting attachment guards	-	532523001

⚠ WARNING

The declared vibration value has been measured with a standard test method and may be used to compare one tool with another.

The declared vibration value may be used in a preliminary assessment of exposure.

The vibration emission during actual use of power tool can differ from the declared total value depending on the ways in which the tool is used.

Identify safety measures to protect yourself based on an estimation of exposure in the actual conditions of use, taking account of all parts of the operating cycle such as the times when the tool is switched off and when it is running idle in addition to the trigger time.

MAINTENANCE SCHEDULE

	Every 25 hours	Before each use	After first month or 20 hours of operation	Every 3 months or 50 hours of operation	Every 6 months or 100 hours of operation	Every year or after 300 hours or operation
Check if fastener is fully tightened		■				
Check: Cutting attachment must not rotate in die mode ²		■				
Clean spark arrestor	■					
Replace spark arrestor						■
Clean air filter	■					
Change air filter						■
Check or adjust spark plug					■	
Replace spark plug						■
Clean fuel tank and filter ¹				■		
Check fuel hose		■				
Replace fuel filter ¹						■
Check all hose connections		■				
Inspect fuel tank vapor vent (if equipped)		■				
Clean the exhaust port and silencer	■					

¹ These items should only be carried out by an authorised service centre.

² If this requirement is not met, contact an authorised service centre for repair or adjustment.

NOTES:

- Maintenance should be performed more frequently when product is used in dusty areas.
- When product has exceeded the maximum figures specified in the table, maintenance should still be cycled according to the intervals of time or hours stated herein.





Imported by:

Techtronic Industries Australia Pty. Ltd.
31 Gilby Road, Mount Waverley, VIC 3149
Melbourne, Australia

Techtronic Industries N.Z. Limited
2 Landing Drive, Mangere,
Auckland, 2022, New Zealand

960405047-01