

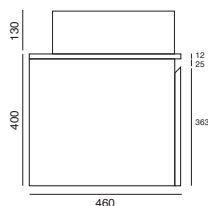
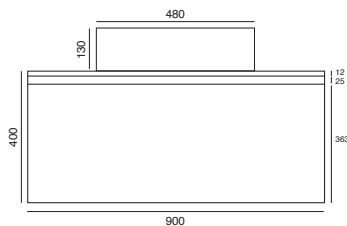
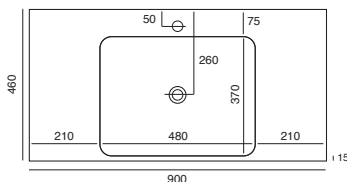
# Glee Vanity 900

Wall Hung



Striking good looks combined with practicality aren't the only standout features of the Glee vanity. There's also the option of tailoring the design with either a white or Café Oak veneer drawer front and a choice of white or black/white basins – in any combination. Practical storage is contained in a single large storage drawer that runs the full length of the cabinet. This is topped with a 12mm solid surface top and finished with a Vivid rectangular, countertop basin. The option of changing both the drawer front and the basin colour assures design flexibility, enabling the look to be matched to your chosen bathroom style.

#### SET-OUT FOR LICENSED PLUMBER:



#### CABINET FINISH

White gloss polyurethane exterior.  
Interior: White moisture resistant melamine

Drawer front can be customised with Café Oak veneer

#### TOP/BASIN

Solid surface top with Vivid rectangular ceramic counter top basin in white or black

Tap hole options: 1 only  
Includes 32mm plug & waste (no overflow)

Tapware sold separately

#### MECHANISMS

Finger pull handles.

Soft-close drawer runner

#### DIMENSIONS

W 900 x D 460 x H 400mm

#### PACKED DIMENSIONS & WEIGHT

W 1000 x D 500 x H 500mm, 50kg



Veneer 1: Café Oak

#### WARRANTY

Three (3) years (see warranty information over page).

#### INSTALLATION TIPS

- \* Must be installed by a Licensed Plumber
- \* 80mm allowance behind drawer for hot/cold pipework
- \* Screw fix through the rear of the cabinet, washers must be used to avoid the screw pulling on the carcass
- \* Ensure tops and sides are silicone sealed
- \* Detailed installation instructions over page

GLEVAN9WB  
(white drawer front, black basin)  
I/N: 4844358

GLEVAN9WW  
(white drawer front, white basin)  
I/N: 4844359

GLEVAN9CB  
(Café Oak drawer front, black basin)  
I/N: 4844360

GLEVAN9CW  
(Café Oak drawer front, white basin)  
I/N: 4844361

#### CIBO DESIGN – WHO ARE WE?

Established in 1994 on Sydney's northern beaches, CIBO Design has built a solid reputation for its collection of high quality Australian-designed bathroomware. Specialising in producing innovative bathroom storage solutions, CIBO's products combine contemporary design and quality craftsmanship with practicality.

# Glee Vanity

## Delivery/Pick-up & Installation

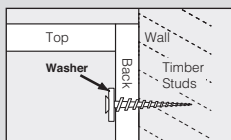
If an item is damaged or imperfect when opened, do not proceed with installation. If a defective item is installed, CIBO is not liable for removal of the item, nor will CIBO accept responsibility to repair or replace the product. CIBO bathroomware should only be installed by a licensed plumber.

## Returns & Exchanges

Please retain your receipt and contact the 'Returns and Exchanges' Desk at the Bunnings store where you purchased the item.

## IMPORTANT NOTES:

### 1. Use washers with Wall Hung Vanities:



When fixing vanity unit to wall, use washers around the top fixing positions. This will decrease pressure applied to the screw head.

In situations where a wall is out of square, the installer may be required to use packers behind the vanity to ensure the unit does not become twisted during installation.

**IT IS THE RESPONSIBILITY OF THE INSTALLER TO ADJUST THE DOOR(S) AND/OR DRAWER(S) AFTER INSTALLATION.**

**2. Under no circumstances should vanities and/or tops be tiled into the wall.** CIBO vanities and basin/tops must be fitted to finished/completed wall coverings e.g., tile, masonry or other cladding method deemed acceptable, as per the building code (of Australia) 2013. The CIBO Warranty does not cover any vanity and/or top and/or basin that has been tiled 'into' a wall i.e., fitting or fixing a vanity to a wall and tiling around it, and/or tiling down and/or around the vanity and top/basin.

## Vanity Unit Installation

- Carefully remove drawer(s) (see **Drawer Removal** instructions) and cover runners before installation, to avoid damage. If top has not been fixed to vanity, remove it from vanity.
- Using a hole saw, drill holes for water supply pipes, wastes etc.
- Carefully move cabinet into place. Pack vanity to required height ensuring vanity top is level from side to side and front to back. Packers may be required behind the unit to ensure top is level and to prevent unit from twisting.
- Once vanity is level, fasten it to the wall using washers around the appropriate fixings i.e. screws, bolts (not supplied). It is the installers responsibility to determine what fixing materials are needed. Fixings should be made as high as possible on unit.

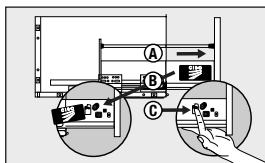
### (see 'IMPORTANT NOTES' re Wall Hung Vanities)

- Sweep debris from interior of unit.
- Now replace top ensuring front and ends of top line up with front and ends of unit. This may leave gaps between top and wall. Fix top to vanity with silicone.
- The unit must be sealed (along the back edge of top and down the sides) against the wall with bathroom quality silicone. The best method of applying silicone is to cut the appropriate sized tip at a 65° angle and to evenly run a bead around the unit ensuring all gaps are filled. Seal around the cabinet with silicone.
- Spray soapy water on the silicone joint (between the wall and top) to stop silicone sticking to wall, then wipe off excess silicone and soapy water.
- Pipes can now be connected.

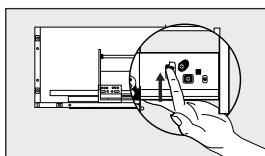
**DAMAGE MAY OCCUR IF THE PRODUCTS ARE CONSTANTLY EXPOSED TO WATER. SILICONE MUST BE USED TO SEAL ALL JOINS – TOPS, CABINET SIDES AND KICKBOARDS MUST BE SEALED TO PREVENT WATER PENETRATION.**

## Drawer Removal

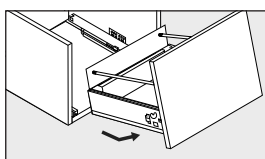
(before vanity installation)



- A** Pull out the drawer. **B** Take the CIBO caps off both sides. **C** Locate release levers on both sides.

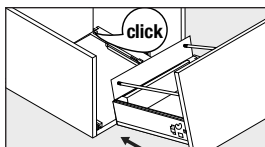


- With tip of your finger lift the release levers on both sides at the same time.

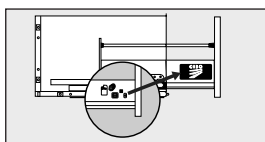


- Lift and slide out the whole drawer.

## Drawer Replacement



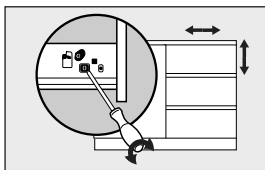
- Insert the drawer back on the runner – when you hear a "click" it has been connected.



- Replace the CIBO caps.

## Drawer Front Alignment

(after vanity installation)



Adjustment point for drawer front alignment if required.

## Product Care & Maintenance

We advise that it is the responsibility of the purchaser to ensure the product is installed and maintained appropriately. All materials used are of high quality and care must be taken when cleaning.

### Ceramic

We recommend regular cleaning with a damp cloth. For stubborn marks or stains use a small amount of mild abrasive cleanser such as Jif® cream with a damp cloth.

### Solid Surface material

CIBO recommends wiping with a soapy sponge, followed by rinsing. Most light marks and scuffs can be removed by wiping firmly with a damp sponge or cloth and a mild abrasive cleanser.

Please note, using abrasive cleansers on your Solid Surface material may change your sheen level. By routinely cleaning the entire surface consistency in sheen will be maintained.

For more stubborn stains you will need to occasionally give your Solid Surface material a more thorough clean and refresh using a mild abrasive cleanser like Gumption® paste cleanser, Jif® cream cleanser or Ajax® cream or cleanser.

Firmly wipe the surface with a damp sponge or cloth and the mild abrasive cleanser using a wide circular motion. Always finish by rinsing and wiping your surface with a damp cloth or sponge. The Vileda® range of cloths and non-scratch scourers are recommended.

### Cabinets

The most effective cleaning method is to use a damp cotton cloth and a mild detergent. Never use an ammonia-based product or any kind of abrasive cleaning product.

## Warranty

This product is covered by a three (3) year replacement product warranty. Products which are within 3 years from the date of purchase, found upon inspection by an authorised representative to be defective will be repaired or exchanged with an equivalent product free of charge. Replaced items become CIBO Design's property. All replacement products will be available for collection without charge to the customer at the nearest Bunnings store to the customer's location, or elsewhere as agreed with the customer.

### Warranty for Labour and Spare Parts – One (1) Year

The labour for the replacement of products and spare parts to which this warranty applies will be supplied by CIBO Design if the warranty claim is made within one (1) year from the date of purchase.

Spare parts which are within one (1) year from the date of purchase and found upon inspection by an authorised CIBO Design representative to be defective in construction, material or assembly, will be replaced free of charge. Products found to be faulty more than one (1) year from the date of purchase will be replaced free of charge by CIBO Design. After one (1) year from date of purchase, labour and spare parts costs are the responsibility of the customer.

### Warranty Conditions

This warranty will apply only under all of the following conditions:

- The item has been installed by a licensed plumber;
- This item has been installed for and subjected to domestic residential use only;
- Failure is due to the manufacture of the product;
- Proof of purchase (including date

- of purchase) is provided;
- The installation of the product is in accordance with the instructions provided. This warranty does not include faults caused by:
  - Unsuitable or improper use;
  - Incorrect installation or installation not in accordance with the instructions provided;
  - Installation or part installation by the purchaser or any person other than a Licensed Plumber;
  - Normal wear and tear including water\* and natural causes such as sunlight, humidity and other environmental conditions or factors;
  - Inadequate or complete lack of maintenance;
  - Chemical, electrochemical or electrical influences;
  - Harsh detergents or abrasive cleaners used on product finishes

\*Important note: CIBO Design vanity cabinets are manufactured from Moisture Resistant (MR) materials but are not waterproof. Care must be

taken to dry spillages or leakage of water that may gain access to cabinetry. Accurate sealing of the vanity cabinet and kickboard (where applicable) is vital for proper maintenance of the product and ensuring longevity.

**Exclusions** - To the fullest extent permitted by law, CIBO Design excludes all liability for damage or injury to any person, damage to any property, and any indirect consequential or other loss or damage.

**Warranty Claim Procedure** - Please retain your receipt and contact the 'Returns and Exchanges' Desk at the Bunnings store where you purchased the product. Warranty claims can also be sent to: CIBO Design, After Sales Service PO Box 7461, Warringah Mall, Brookvale NSW 2100. Our goods come with guarantees that cannot be excluded under the Australian Consumer Law. You are entitled to a replacement or refund for a major failure and compensation

for any other reasonably foreseeable loss or damage. You are also entitled to have the goods repaired or replaced if the goods fail to be of acceptable quality and the failure does not amount to a major failure. The benefits to the customer given by this CIBO Design warranty are in addition to any other rights and remedies available to the customer as a consumer under any laws that relate to the goods covered by this CIBO Design warranty. CIBO Design Pty Ltd  
1/130 Old Pittwater Road  
Brookvale NSW Australia  
Postal: PO Box 7461, Warringah Mall, Brookvale NSW 2100  
Tel: (02) 9939 4464  
Email: aftersales@cibodesign.com.au