

3. Insert the plug of the charging cable **11** into the battery **10**. Charging control lamp **12** is lit red: Battery is charged. Charging control lamp **12** is lit green: Battery is fully charged.
4. Disconnect the plug of the charging cable and then disconnect the battery charger from the mains socket.
5. Slide the battery **10** into the hose housing until it snaps in.

#### Operation [FIG. F]

**Unwinding:** Pull out hose to desired length.

**Rolling up:** Holding the end of the hose, walk back to the hose housing and hold the RUN button down **15** until the hose has been rolled up to the desired length. Hold the hose while it rolls up.

**Protective function:** If the hose is blocked or completely rolled up, the motor automatically switches off.

#### LED display of battery-charging status [FIG. F]

The charging level of the battery is displayed briefly every time the RUN button **15** is pressed. When the battery is fully charged, the hose can be rolled up to 35 times.

LED 3 shines green: Battery is fully charged.

LED 2 shines yellow: Battery is half-charged.

LED 1 shines red: Battery is nearly empty and must be charged.

LED 1 flashes red: Battery is completely empty and must be charged.

#### Cleaning

The hose housing is maintenance-free and does not need to be cleaned with water or solvents. If necessary, clean the contacts of the battery with a dry cloth.

#### Technical Details

Battery: 3 Li-Ion batteries

Battery capacity: 2.0Ah with 11V

Battery charging: approx. 4-5 hours

Battery charger: mains voltage 100–240 V/ 50–60 Hz, rated output current 700 mA

# HOLMAN

For the #SMARTGARDENER   

#### Head Office / Service

11 Walters Drive, Osborne Park WA 6017  
 Ph: +61 8 9416 9999 Fax: +61 8 9416 9920  
[service@holmanindustries.com.au](mailto:service@holmanindustries.com.au)  
[www.holmanindustries.com.au](http://www.holmanindustries.com.au)

Copyright 2018 Holman Industries

# HOLMAN



Li-Ion  
 BATTERY POWERED

## Retractable Hose Reel Instruction Manual

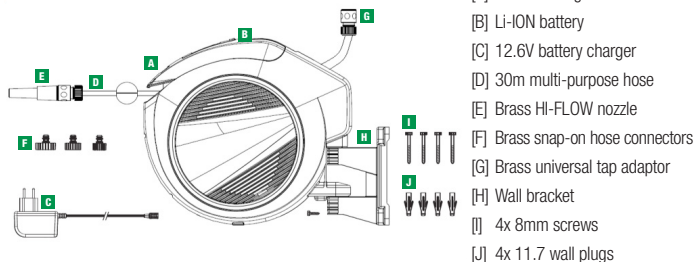
Please read these operating instructions carefully prior to first use.

For safety reasons children should not use this product.

The Li-Ion Retractable Hose Reel is intended for residential use only and is not suitable for commercial uses. This hose is only suitable for outdoor use.

## Contents

A



[A] Hose housing

[B] Li-Ion battery

[C] 12.6V battery charger

[D] 30m multi-purpose hose

[E] Brass HI-FLOW nozzle

[F] Brass snap-on hose connectors

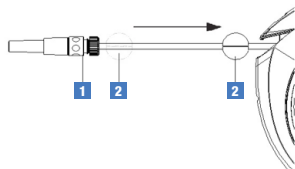
[G] Brass universal tap adaptor

[H] Wall bracket

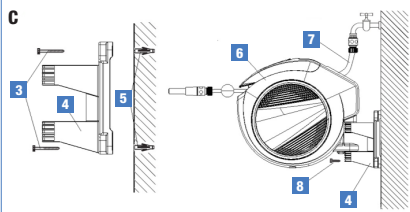
[J] 4x 8mm screws

[J] 4x 11.7 wall plugs

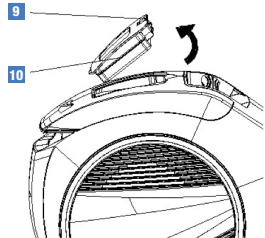
B



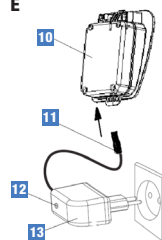
C



D



E



F



## Safety warnings

- The battery charger may not be used to charge any other batteries, other than the supplied battery.
- Never expose the battery charger to moisture or wetness.
- Only use the supplied battery in the hose reel. Unauthorised batteries risk exploding.
- The lithium-ion battery can be charged at every charging level and charging can be interrupted at any time without damaging the battery.
- Over voltage can destroy the battery and the charger. Observe correct mains voltage.
- Do not bridge contacts of the battery charger or the battery, with metal parts.
- After intensive use, let the battery cool before charging.
- Disconnect the charging plug before storing the battery charger.
- Due to the danger of physical injury, the battery may not be used as an energy source for other appliances.
- Never charge batteries near acids and highly flammable materials.
- Protect the battery against heat and fire. Do not place on radiators or expose to intense sunlight for long periods. Only use and charge the battery in ambient temperature between 5°C and 45°C.
- The mains charging cable must be inspected regularly for signs of damage and aging (brittleness) and may only be used in perfect condition.
- Do not open the hose reel housing or the battery.

## Disposal of the battery

The battery 10 is composed of lithium-ion which must not be disposed with normal household waste at the end of its life.

Please check with your local council to see where you can dispose of the battery properly.

Cont. over page

## Storage

In regions prone to frost, stow the hose housing and the battery in a frost-proof place in an upright position.

Do not store the battery in conditions over 45°C or under direct sunlight. Remove the battery from the hose housing and charge it before storing it separately.

Do not store the battery in places with static electricity.

## Moving the hose stopper [FIG. B]

If required, the stopper can be moved along the length of the hose.

1. Remove the battery before moving the stopper.
2. Loosen the two screws on the stopper 2 with a screwdriver.
3. Holding the hose, shift the stopper 2 and re-tighten with the two screws.

## Mounting the wall bracket [FIG. C]

1. Remove the wall bracket from the housing unit by unscrewing the safety screw 8.
2. The supplied wall plugs are suitable for cement walls (plaster up to 1cm). For other wall types, specific wall plugs for that type of wall must be used (not supplied).
3. Mark holes using the wall bracket 4, drill into the wall with a 10mm drill and push in the wall plugs 5.
4. Screw in the wall bracket 4 with the four screws 3.
5. Stick the hose housing 6 onto the wall bracket 4.
6. Re-secure the hose housing 6 with the supplied safety screw 8.
7. Connect the connecting hose 7 to the tap.

## Charging the battery [FIG. E]

The battery must be fully charged prior to first use.

1. Press the release button 9 and remove the battery 10.
2. Insert the battery charger 13 into a mains socket.